

# IODP EXP 358 Daily Geomechanics Report

Report #081 20190129

## RTG Team

RTG Supervisor(s)	David Castillo / Thomas Finkbeiner / Demian Saffer
RTG Watch Lead (00:00-12:00)	Kan Aoike
RTG Watch Lead (12:00-24:00)	Adam Wspanialy

## Well Status

Site Name:	C0002	Hole Name:	R/S
Water Depth:	1,939.0 m	RT-MSL:	28.5 m
0600h Hole Depth:	5,052.0 mBRT (5049.0) (mTVD)	Section TD:	6,000.0 mBRT (6,003.0) (mTVD)
Section #:	1	CSG Depth/Size:	4,818.0 mBRT 11-3/4" ESET inches
Static MW:	1.39 sg	Current ECD:	- sg
FIT/LOT/ XLOT:	N/A Note: 1.46sg FIT @ 4,757mBRT		
Current formation/ lithology:	Shale		
Sensor Offsets from the Bit:	N/A		
Other BHA Offsets from the Bit:	N/A		
Current Operations:	Continued POOH the fishing BHA and retrieved the severed 8-1/2" DC on deck. Carried out rig services. Rigged up WL equipment and performed logging with Junk Basket, 9.437" Gauge Ring and CCL. Confirmed ESET hanger top at 4602 mBRT. Tagged top of fish at 4779 mBRT, 3 m shallower than expected. POOH WL tools and rigged down. Carried out rig services.		

## Geomechanics Alert

<b>GREEN</b>	<p><b>Green</b> = Projected model remains accurate                  White = Unanticipated deviation from model which <i>should not</i> affect drilling                  Yellow = Unanticipated deviation from model which <i>may</i> affect drilling                  Red = Imminent requirement to stop drilling</p>
<b>Basis for Alert Level + Recommendations</b>	<p>1.39 sg remains recommended MW for Section 1.                  No further change in wellbore condition has been observed.</p>

## Principal Findings

N/A

# IODP EXP 358 Daily Geomechanics Report

Report #081 20190129

## Observations Summary

Fracture Gradient	N/A
Pore Pressure	N/A
Wellbore Breakout	N/A
Tensile Failure	N/A
Drilling Parameters	N/A
Other	N/A

## Analysis

### Drilling Experience Analysis

N/A

### Cuttings and Cavings Analysis

N/A – Only circulating the riser.

### LWD Data Analysis

N/A

### SFIB Analysis

No further updates.

# IODP EXP 358 Daily Geomechanics Report

## Report #081 20190129

### Geomechanical Model Review

No change in the current stress model.

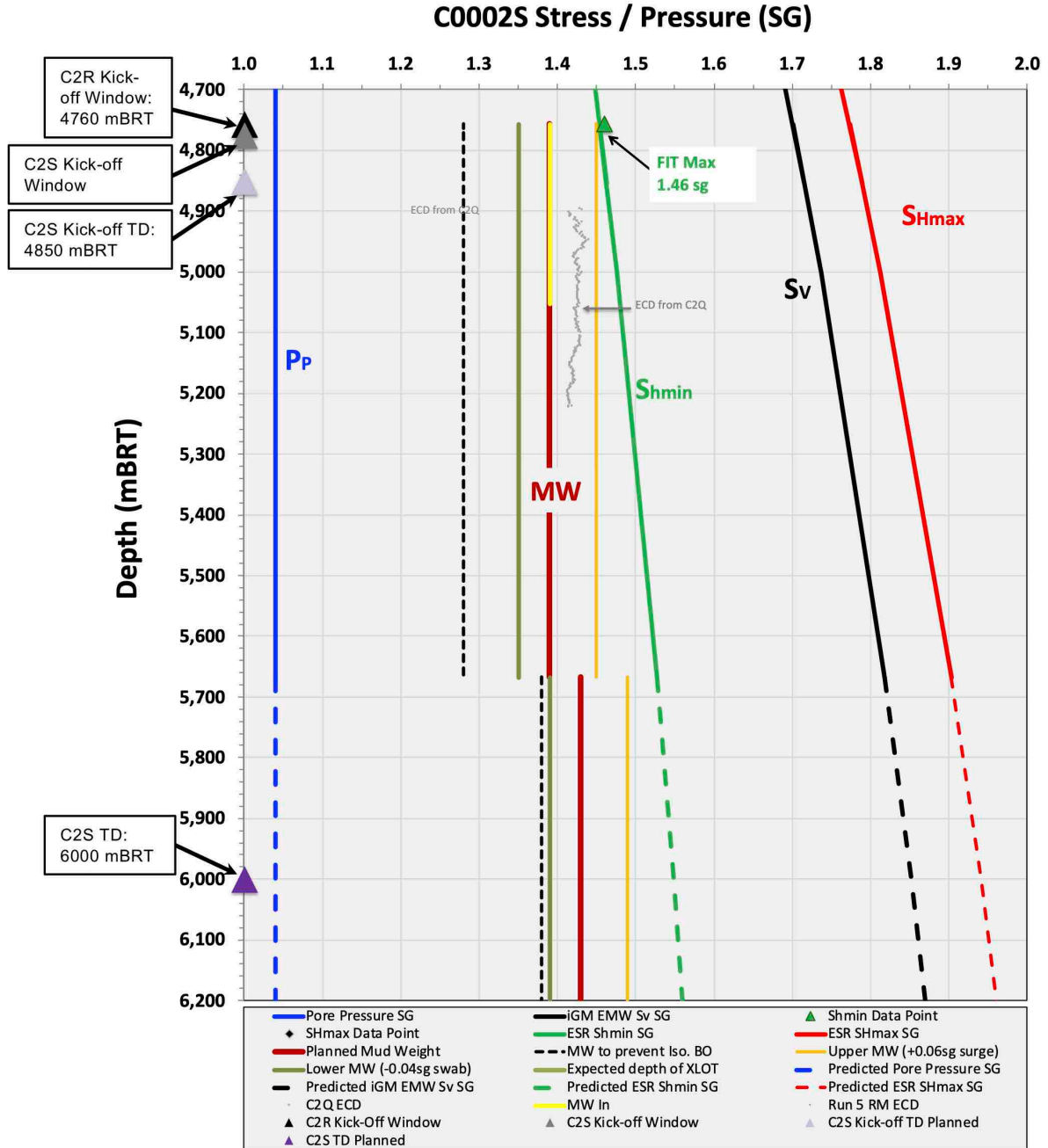


Figure 1 Current stress model for C2S