

# IODP EXP 358 Daily Geomechanics Report

Report #082 20190130

## RTG Team

RTG Supervisor(s)	David Castillo / Thomas Finkbeiner / Demian Saffer
RTG Watch Lead (00:00-12:00)	Kan Aoike
RTG Watch Lead (12:00-24:00)	

## Well Status

Site Name:	C0002	Hole Name:	R/S
Water Depth:	1,939.0 m	RT-MSL:	28.5 m
0600h Hole Depth:	5,052.0 mBRT (5049.0) (mTVD)	Section TD:	6,000.0 mBRT (6,003.0) (mTVD)
Section #:	1	CSG Depth/Size:	4,818.0 mBRT 11-3/4" ESET inches
Static MW:	1.39 sg	Current ECD:	- sg
FIT/LOT/ XLOT:	N/A Note: 1.46sg FIT @ 4,757mBRT		
Current formation/lithology:	Shale		
Sensor Offsets from the Bit:	N/A		
Other BHA Offsets from the Bit:	N/A		
Current Operations:	Continued rig services. Rigged up for WL CBL-CCL tool and RIH. Logged between 4384 and 4786 mBRT. Tagged top of fish at 4779 mBRT. Obtained indication of potential some cement behind ESET. Wound up WL tool and rigged down. Made up Whipstock assembly and RIH.		

## Geomechanics Alert

<b>GREEN</b>	<p><b>Green</b> = Projected model remains accurate  <b>White</b> = Unanticipated deviation from model which <i>should not</i> affect drilling  <b>Yellow</b> = Unanticipated deviation from model which <i>may</i> affect drilling  <b>Red</b> = Imminent requirement to stop drilling</p>
<b>Basis for Alert Level + Recommendations</b>	<p><b>1.39 sg</b> remains recommended MW for Section 1.</p> <p>However, the kick-off borehole for the planned C2S side-track will occur within several metres of the C2P hole. This is because region around the C2P hole has been severely damaged and could induce significant wellbore instabilities at the window junction and beyond due to the current fragile nature of the rock/structure. If hole collapse were to occur in C2S, it is more likely to occur within a short distance from the C2S window. To help minimize this wellbore instability risk, the continued application of FracSeal in the same amounts as previously used (preferably more FracSeal) could help avoid or minimize drilling fluid invasion into the cracks/fractures. The aperture of these cracks and fractures is not known, which is why additional FracSeal material might help seal these fragile cracks (if not mixed with other mud sealant additives). To further reduce the risk of drilling fluid invasion, the mud weight can be reduced back to <b>1.37 sg</b>.</p>

## Principal Findings

N/A

# IODP EXP 358 Daily Geomechanics Report

Report #082 20190130

## Observations Summary

Fracture Gradient	N/A
Pore Pressure	N/A
Wellbore Breakout	N/A
Tensile Failure	N/A
Drilling Parameters	N/A
Other	N/A

## Analysis

### Drilling Experience Analysis

N/A

### Cuttings and Cavings Analysis

N/A – Only circulating the riser.

### LWD Data Analysis

N/A

### SFIB Analysis

No further updates.

# IODP EXP 358 Daily Geomechanics Report

## Report #082 20190130

### Geomechanical Model Review

No change in the current stress model.

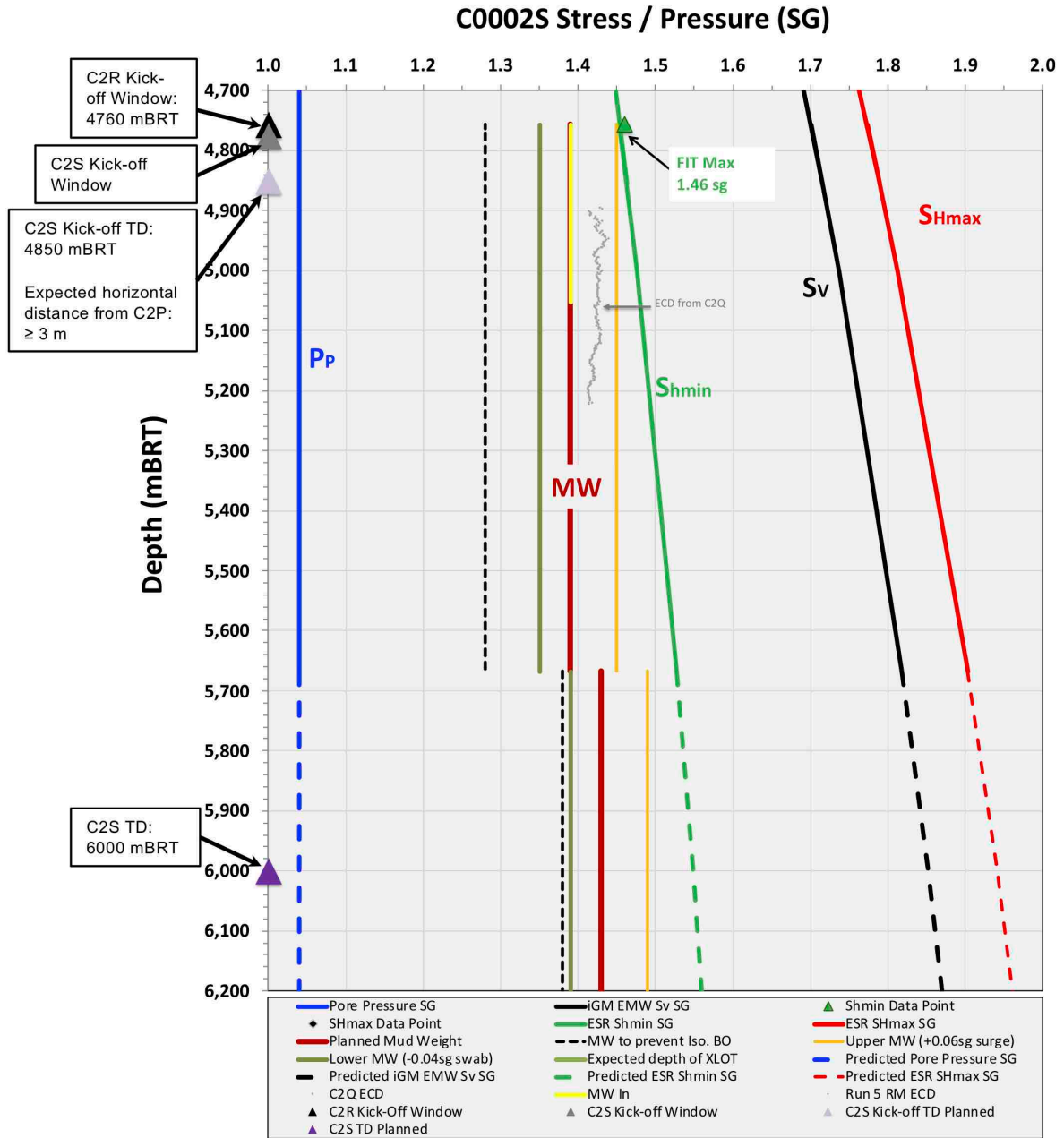


Figure 1 Current stress model for C2S