

IODP EXP 358 Daily Geomechanics Report

Report #086 20190203

RTG Team

RTG Supervisor(s)	David Castillo / Thomas Finkbeiner / Demian Saffer
RTG Watch Lead (00:00-12:00)	Kan Aoike
RTG Watch Lead (12:00-24:00)	Emily Wisbey

Well Status

Site Name:	C0002	Hole Name:	S
Water Depth:	1,939.0 m	RT-MSL:	28.5 m
0600h Hole Depth:	4,779.0 mBRT (4,777.0) (mTVD)	Section TD:	6,000.0 mBRT (5,998.0) (mTVD)
Section #:	0	CSG Depth/Size:	4,773.0 mBRT 11-3/4" ESET inches
Static MW:	1.39 sg	Current ECD:	- sg
FIT/LOT/ XLOT:	N/A Note: 1.46sg FIT @ 4,757mBRT		
Current formation/ lithology:	Shale		
Sensor Offsets from the Bit:	TeleScope 675 (IWOB: 15.016 m, GR: 17.735 m, D+I: 18.381 m)		
Other BHA Offsets from the Bit:	8-1/2" Insert Bit: 0~0.25 m Motor w/ 1.15° bend: 0.25~8.432 m 8.125" Stabilizer: 8.432~10.095 m TeleScope 675: 14.236~22.561 m UBHO: 32.527~33.487 m 6.75" Collar x 3 + XO x 1: 34.487~119.154 m Jar: 119.154~129.075 m 6.75" Collar x 2: 129.075~147.731 m		
Current Operations:	RIH 8-1/2" Kick-off LWD BHA to 4,779m. Commenced drilling kick off section. Took weight at 4779 mBRT and 4786 mBRT. Drilled down to 4788.5 mBRT then went into WOW due to rough sea condition. Pulled out BHA above the top of ESET.		

Geomechanics Alert

GREEN	<p>Green = Projected model remains accurate White = Unanticipated deviation from model which <i>should not</i> affect drilling Yellow = Unanticipated deviation from model which <i>may</i> affect drilling Red = Imminent requirement to stop drillin80</p>
Basis for Alert Level + Recommendations	<p>C2S can initially be drilled with a 1.35 SG MW using only FracSeal as the mud additive.</p> <p>While C2S is within 2-4 m horizontally from the C2P hole, an extra amount of FracSeal should be blended with the mud to seal the existing open cracks/beds/fractures as quickly and efficiently as possible. The extra FracSeal would help maximise stability in the fragile hole section near the C2S window and keep it stable during drilling, POOH with LWD BHA, and RIH/POOH with coring BHA operations.</p> <p>If we find earth stress gradients increases with depth (and UCS does not increase as quickly), RTG may recommend increasing the MW slightly (e.g., +0.01 SG increments) with Watch Leaders and Supervisors closely monitoring. This process could be repeated based on real-time learnings. Any subsequent increase in MW in C2S would not pose a serious risk of drilling fluid invasion in the shallower sections if FracSeal was applied generously.</p> <p>1.35 SG MW would increase ROP and perhaps deepen section TD if needed.</p>

IODP EXP 358 Daily Geomechanics Report
Report #086 20190203

Principal Findings

N/A

IODP EXP 358 Daily Geomechanics Report

Report #086 20190203

Observations Summary

Fracture Gradient	N/A
Pore Pressure	N/A
Wellbore Breakout	N/A
Tensile Failure	N/A
Drilling Parameters	N/A
Other	N/A

Analysis

Drilling Experience Analysis

Tagged the bottom at 4779 mBRT as expected and took weight at 4786 mBRT twice (Fig.1). No formation is expected between 4779.5 and 4786 mBRT, consistent with the C2R log (Fig.2). A relatively firm formation (or cement) is expected below 4788 mBRT where high GR was observed in C2R (Fig.2).

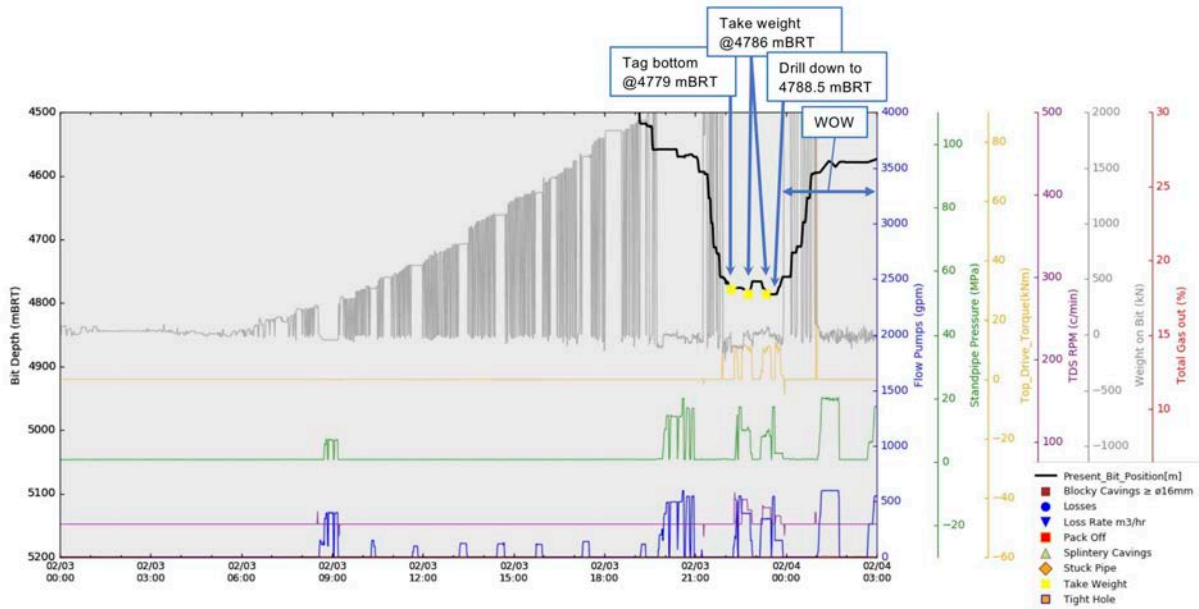


Figure 1 Drilling Experiences over last 27hrs

IODP EXP 358 Daily Geomechanics Report

Report #086 20190203

C0002R eCaliper, Gamma-ray and Resistivities

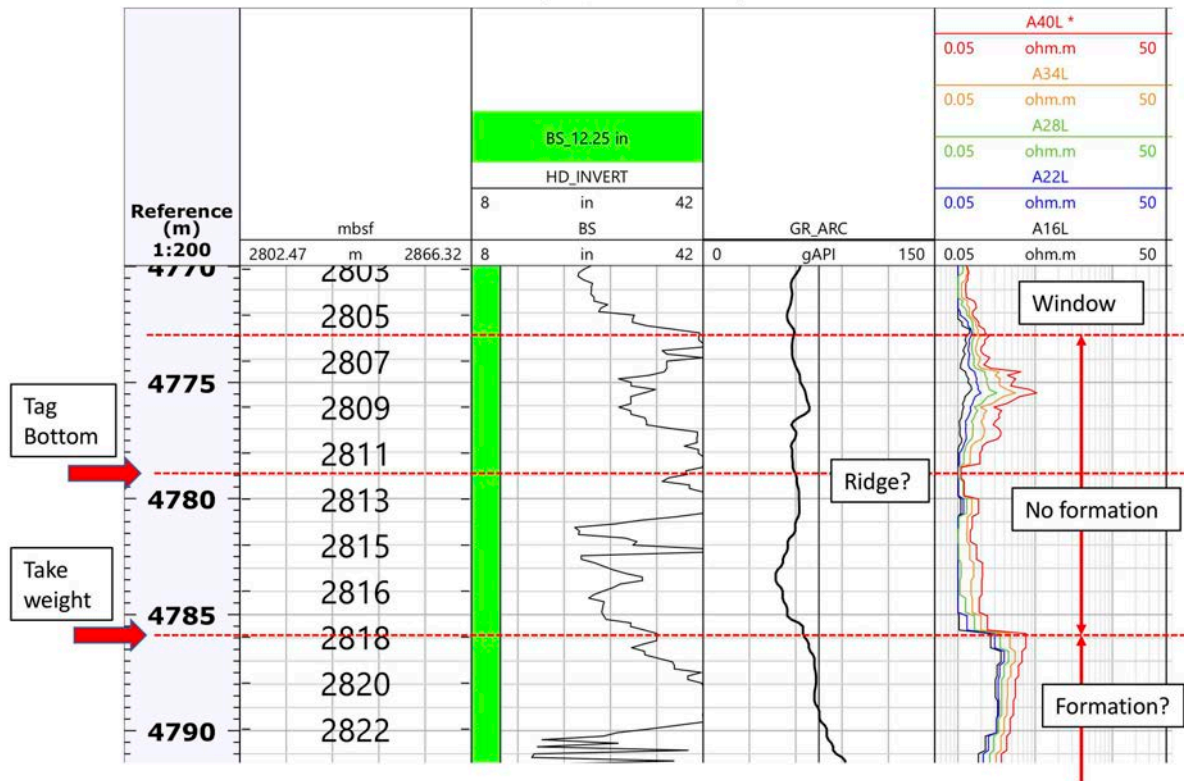


Figure 2 Correlation between C2R LWD logs and indications of C2S kick-off drilling.

Cuttings and Cavings Analysis

Small amounts of Barolift fibers, fine cuttings, subangular cement fragments $\leq \phi 17$ mm and junk of severing came up to the shakers while WOW (Fig.3).



Figure 3 Cuttings/cavings sample while WOW (circulation) (from OPG sample).

IODP EXP 358 Daily Geomechanics Report
Report #086 20190203

LWD Data Analysis

N/A

SFIB Analysis

No further updates.

IODP EXP 358 Daily Geomechanics Report

Report #086 20190203

Geomechanical Model Review

There is no change in the current stress model, but planned MW profile is updated.

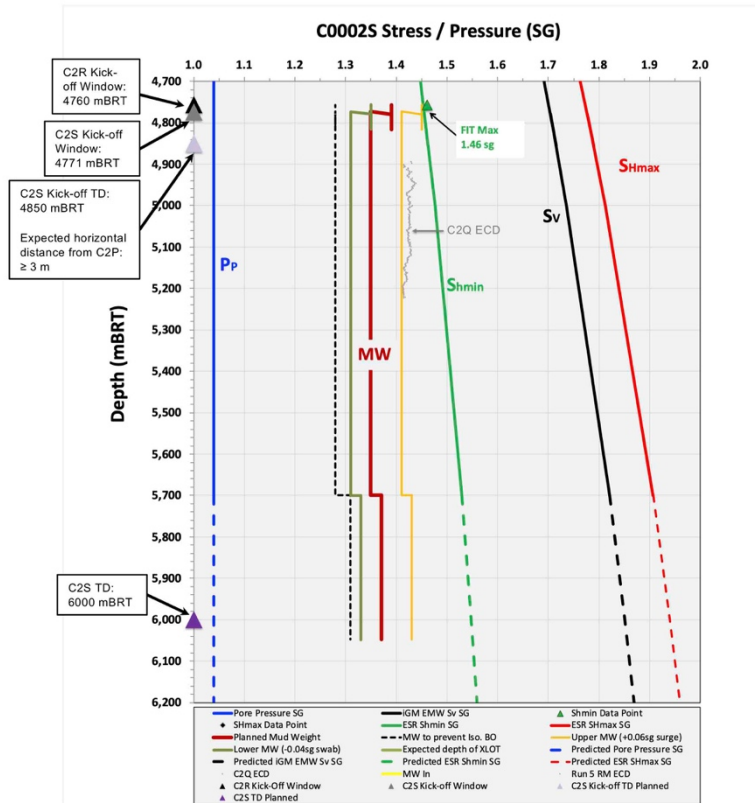


Figure 4 Current stress model for C2S