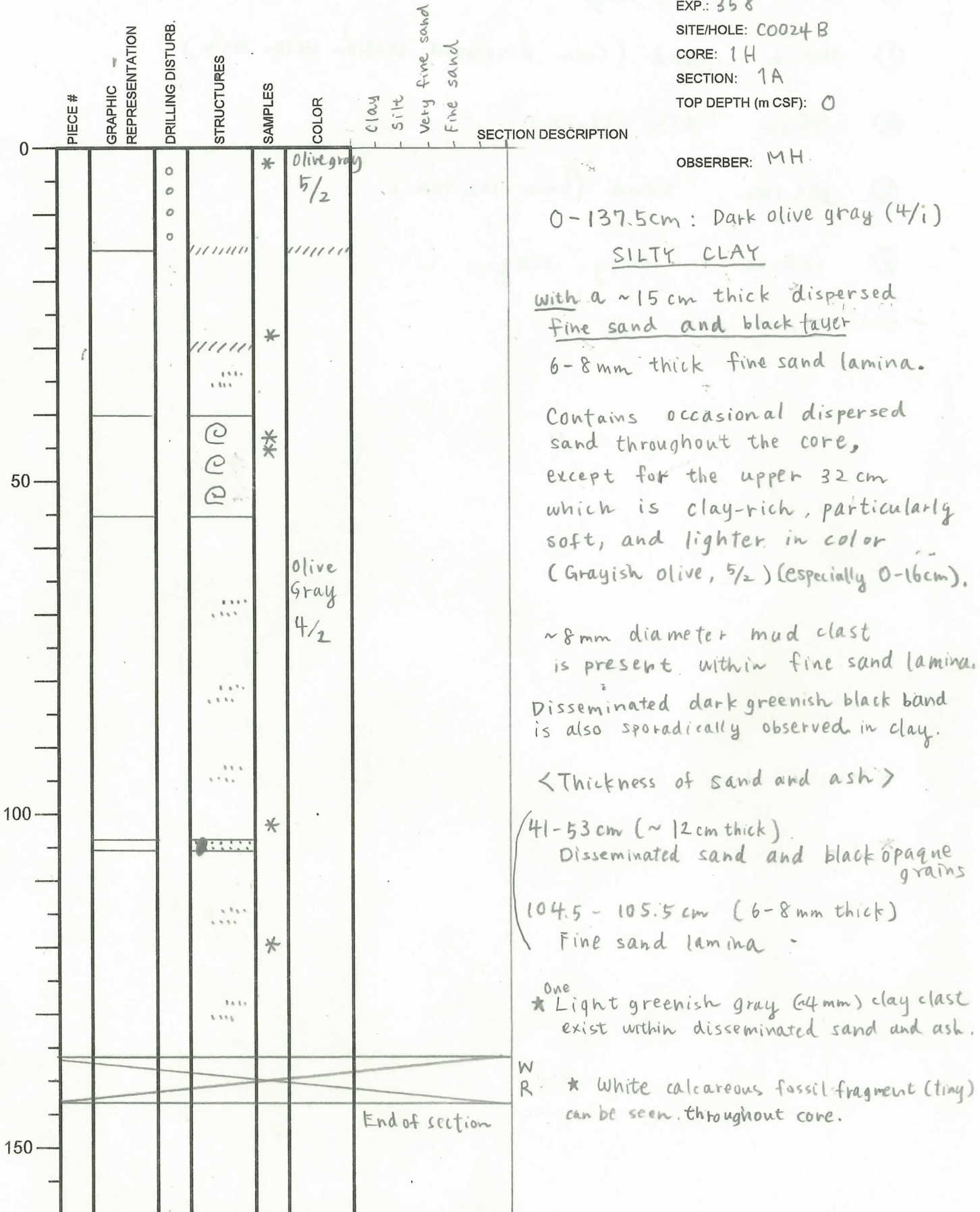


# International Ocean Discovery Program

## Visual Core Description

NO. 1  
 DATE: 1/20/19  
 EXP.: 358  
 SITE/HOLE: C0024 B  
 CORE: 1H  
 SECTION: 1A  
 TOP DEPTH (m CSF): 0

OBSERVER: MH



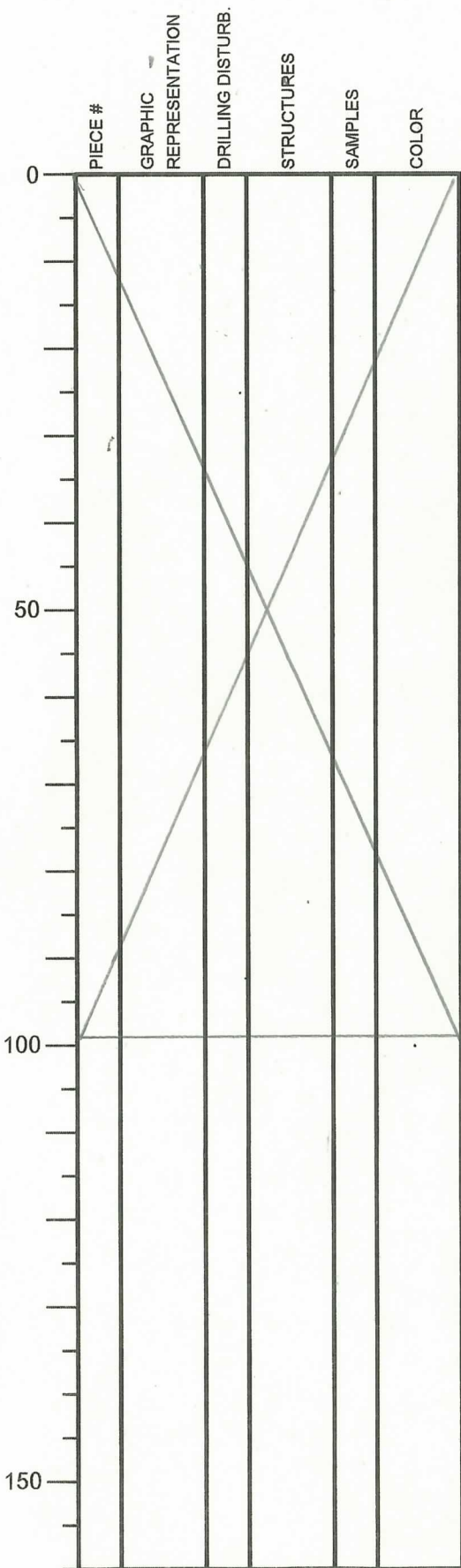
Generally, it is well-recovery core.

\* SS

# International Ocean Discovery Program Visual Core Description

NO. 2  
 DATE: 1/20/19  
 EXP.: 358  
 SITE/HOLE: C0024B  
 CORE: 1H  
 SECTION: 2A  
 TOP DEPTH (m CSF):

OBSERVER: MH



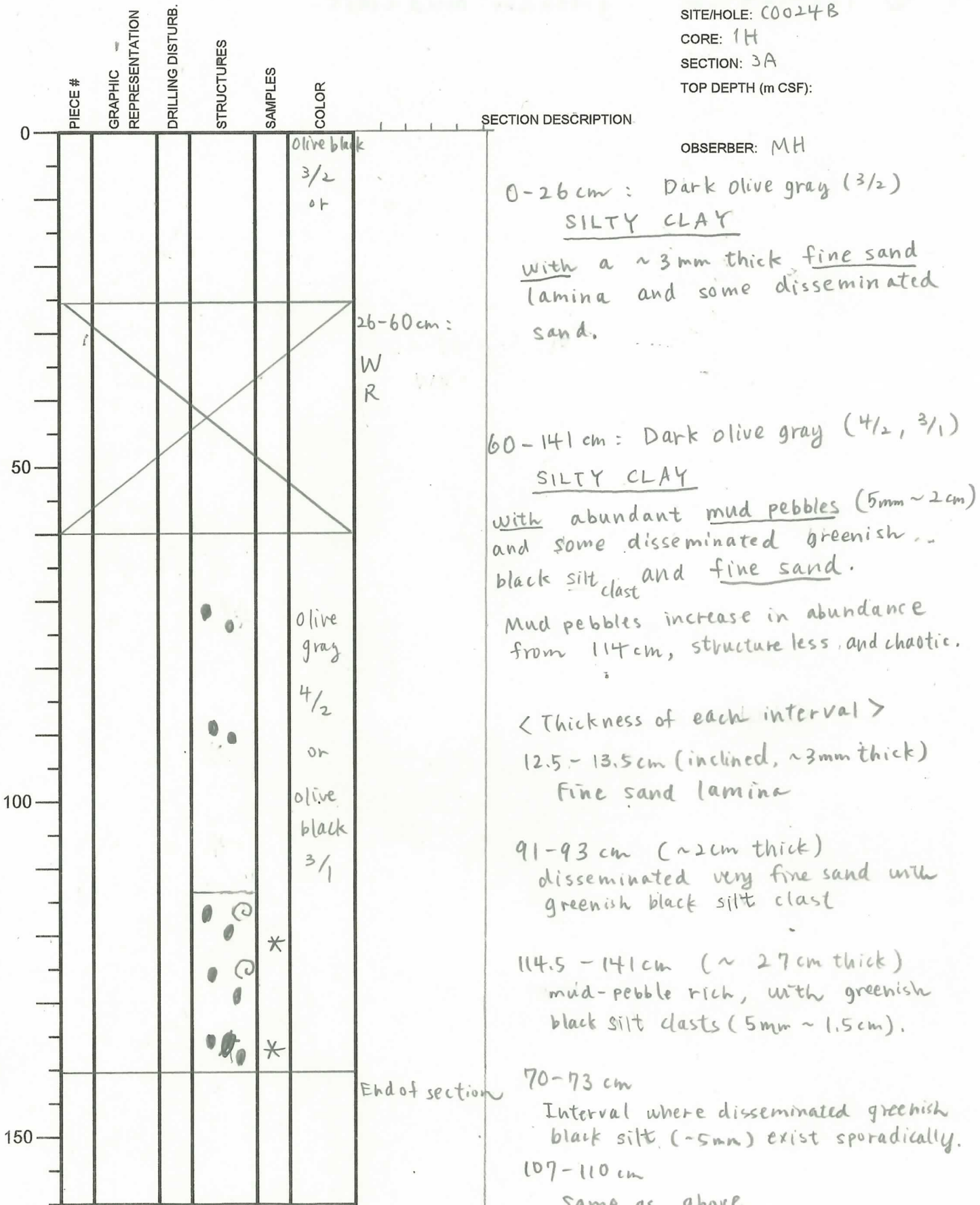
SECTION DESCRIPTION

0-99 cm :  
 IW

# International Ocean Discovery Program

## Visual Core Description

NO. 3  
 DATE: 1/20/19  
 EXP.: 358  
 SITE/HOLE: C0024B  
 CORE: 1H  
 SECTION: 3A  
 TOP DEPTH (m CSF):



Generally, well-recovery core.

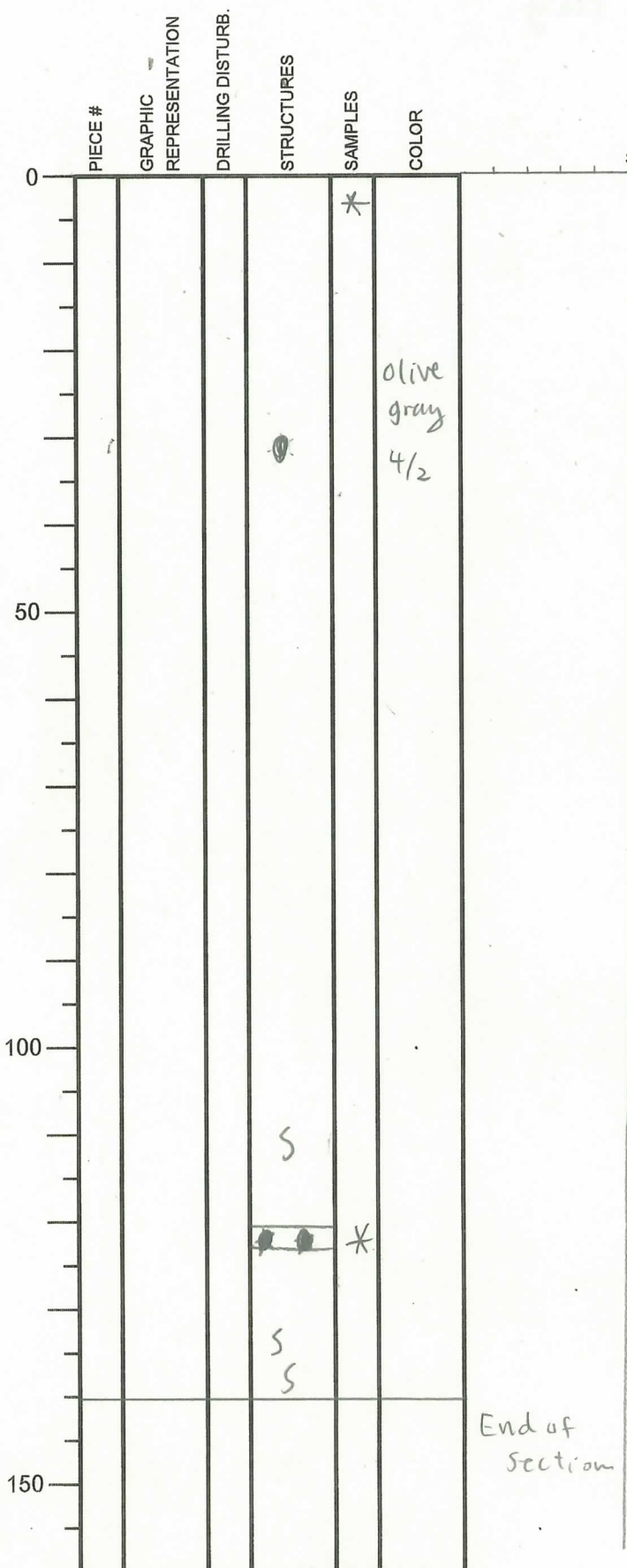
\* SS

# International Ocean Discovery Program

## Visual Core Description

NO. 4  
 DATE: 1 / 20 19  
 EXP.: 358  
 SITE/HOLE: C0624B  
 CORE: 1H  
 SECTION: 4A  
 TOP DEPTH (m CSF):

OBSERVER: MH



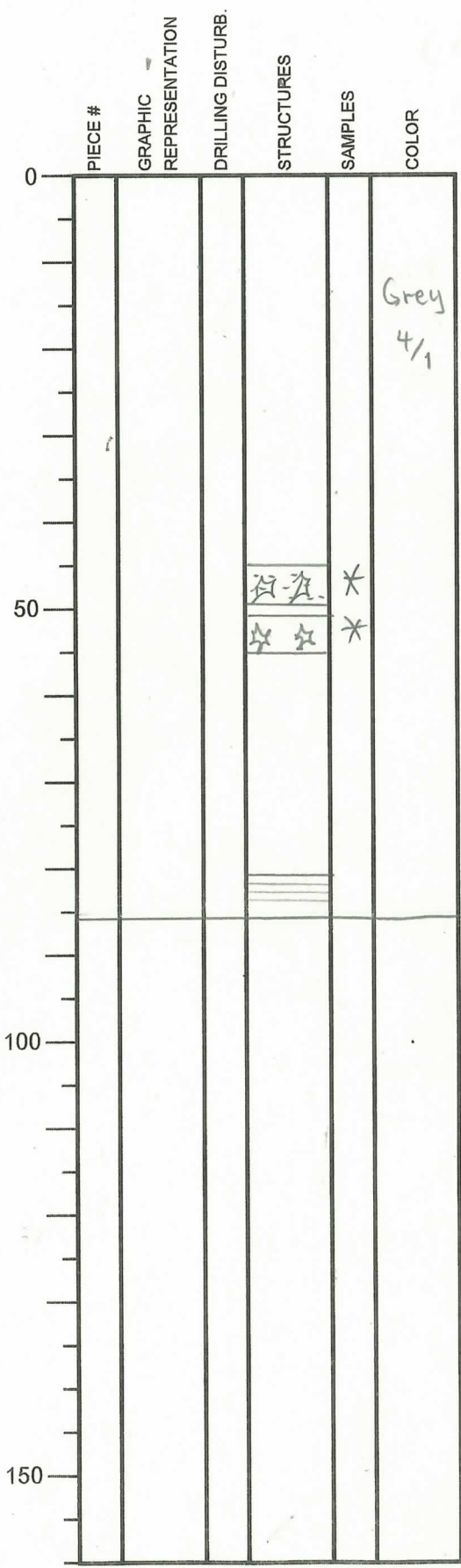
Generally good recovery core

\* SS

# International Ocean Discovery Program

## Visual Core Description

NO. 5  
 DATE: 1/20/19  
 EXP.: 358  
 SITE/HOLE: C0024B  
 CORE: 1H  
 SECTION: 5A  
 TOP DEPTH (m CSF):



SECTION DESCRIPTION

OBSERVER: MH

0 - 86.5 cm : Dark olive gray (4/2)  
SILTY CLAY

with ~3.6 cm thick pink grayish brown ash layer and medium sand.

Thin (~1-2mm) lamina of fine sand is also sporadically observed, especially at 81-85cm.

Black portion and clast also observed at 0-3cm, and 84-85cm, 16-17cm.

< Thickness of ash and sand >

51-55 cm (~3.6cm thick) pink, grayish brown ash

44-49cm Interval of disseminated medium sand (beige color) (similar to adjacent ash),  
 vitric-rich

End of section

Generally good recovery core

\* SS

# International Ocean Discovery Program Visual Core Description

NO.  
 DATE: 1 / 20 19  
 EXP.: 358  
 SITE/HOLE: C0024B  
 CORE: 1H  
 SECTION: 6A  
 TOP DEPTH (m CSF):

OBSERVER: MH

	PIECE #	GRAPHIC REPRESENTATION	DRILLING DISTURB.	STRUCTURES	SAMPLES	COLOR
0						
50						
100						
150						

SECTION DESCRIPTION

0-98.5 cm =

IW

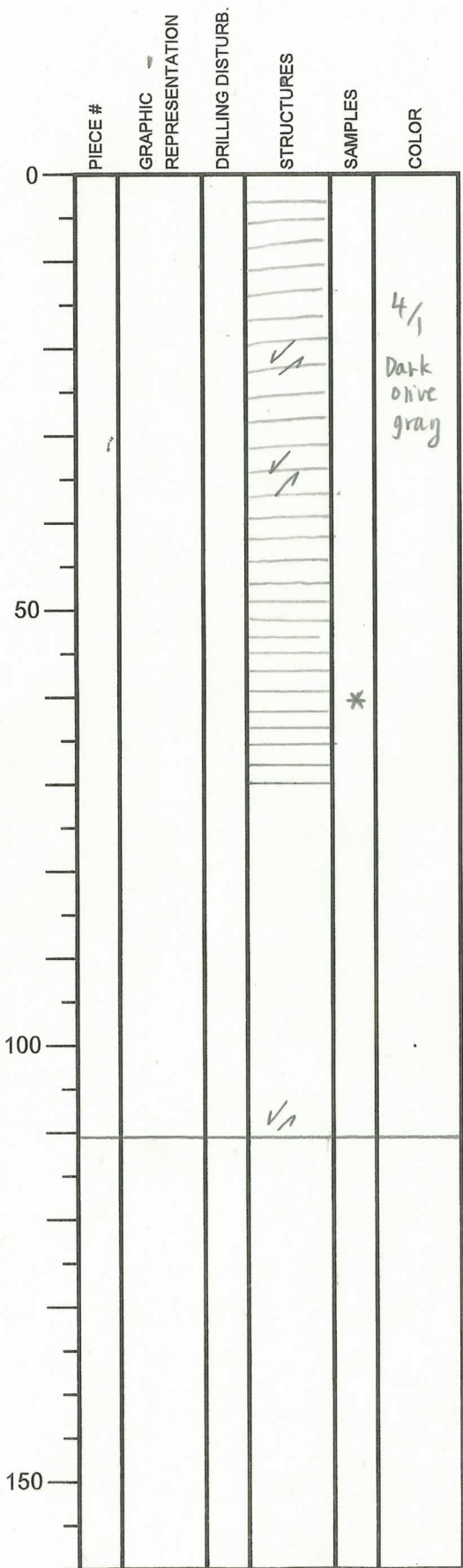
# International Ocean Discovery Program

## Visual Core Description

NO. 6  
 DATE: 13/3/20 19  
 EXP.: 358  
 SITE/HOLE: C0024B  
 CORE: 1H  
 SECTION: 7A  
 TOP DEPTH (m CSF):

OBSERVER: MH

SECTION DESCRIPTION



0-111.5 cm: Dark olive gray (4/1)

SILTY CLAY

with interbedded 5mm-1.5cm thick fine sand\* (mica-rich).

Layers are occasionally displaced by small normal faults (20-40cm, 104-111cm).

Sand is generally darker (black) in color compared to clay.

\* Also silt. Normal grading in sand.

<Thickness of sand interbedding>

10-12 cm (2cm thick) sand

13-14 cm (1cm thick)

21.5-23 cm (1.5 cm thick)

24-24.3 cm (0.3 cm thick)

25-25.5 cm (0.5 cm thick)

34-34.4 cm (0.4 cm thick)

35-35.4 cm (0.4 cm thick)

41-43 cm (2 cm thick)

44.5-45 cm                      55.5-57 cm

45.5-46.5                      61-63 cm

47-48                              70-71 cm

49-51                              105-111.5 cm

\*SS

# International Ocean Discovery Program

## Visual Core Description

NO. 7  
 DATE: 3/3/2019  
 EXP.: 358  
 SITE/HOLE: C0024B  
 CORE: 14  
 SECTION: CC  
 TOP DEPTH (m CSF):

OBSERVER: MT

### SECTION DESCRIPTION

	PIECE #	GRAPHIC REPRESENTATION	DRILLING DISTURB.	STRUCTURES	SAMPLES	COLOR
0						
50				⊙ ⊙	* * *	
100						
150						

44.5-50 cm:  
PAL

0-44.5 cm:

Dark greenish gray (4/1)  
and Grayish brown (4/2)

SILTY CLAY and FINE SAND  
tuffaceous

Fine sand is abundant, and disseminated throughout.

From 18 cm, fine sand is reddish brown in color, ash-rich, patchy, interbedding (disseminate) with greenish gray silty clay. (sand is micaceous)

14.5-18 cm: gray yellowish brown fine sand (tuffaceous?) (3.5 cm thick)

Similar fine sand (but more reddish in color?) is found patchy and disseminated at:

25-28 cm

29-35 cm

36-37.5 cm

38-40 cm