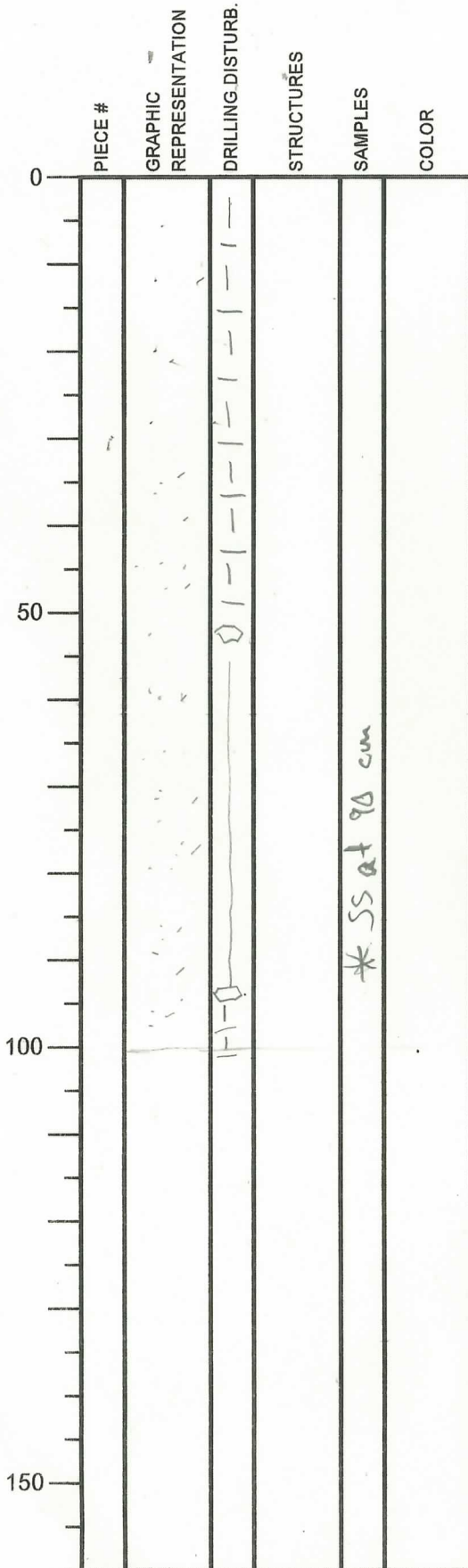


International Ocean Discovery Program

Visual Core Description

NO. 1
 DATE: 16/02/2019
 EXP.: 358
 SITE/HOLE: C0024E
 CORE: 1R
 SECTION: 1
 TOP DEPTH (m CSF):



SECTION DESCRIPTION

OBSERVER: PC

0-100, S => Silty sand
 Dark grey structureless
 muddy sand.
 Biscuit { Drilling disturbed
 between 0-50 cm
 and 96 to 100 cm

International Ocean Discovery Program

Visual Core Description

NO. 2
 DATE: 16/03/2019
 EXP.: 358
 SITE/HOLE: 6024E
 CORE: 1R
 SECTION: 2
 TOP DEPTH (m CSF):

	PIECE #	GRAPHIC REPRESENTATION	DRILLING DISTURB.	STRUCTURES	SAMPLES	COLOR
0			↑			
50		•••••	↓			
100						
150						

SECTION DESCRIPTION

OBSERVER: PC

0-48 cm => silty sand.
 Dark grey structures
 silty sand. highly drilling
 disturbed.
 All of biscuits.

International Ocean Discovery Program Visual Core Description

NO. 3
 DATE: 6/03/2019
 EXP.: 358
 SITE/HOLE: C0024E
 CORE: 1R
 SECTION: 3
 TOP DEPTH (m CSF):

OBSERVER: PC

	PIECE #	GRAPHIC REPRESENTATION	DRILLING DISTURB.	STRUCTURES	SAMPLES	COLOR
0						
50						
100						
150						

SECTION DESCRIPTION

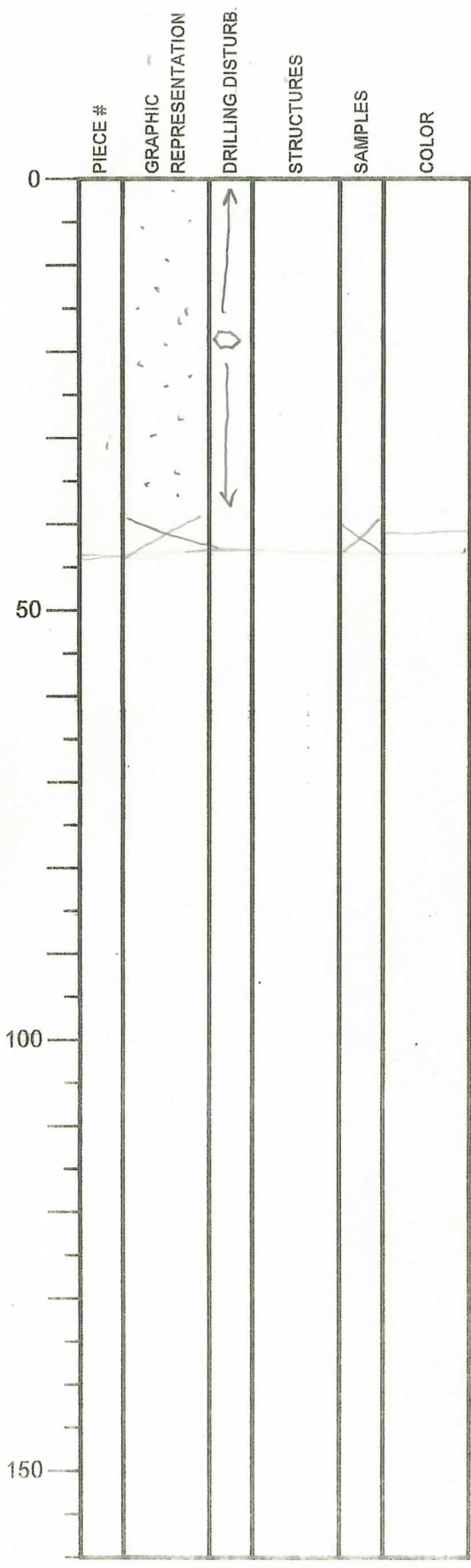
0 - 31 cm :
 1W sample

International Ocean Discovery Program

Visual Core Description

NO. 4
 DATE: 16/03/2019
 EXP.: 358
 SITE/HOLE: C0024
 CORE: C0024E
 SECTION: 4
 TOP DEPTH (m CSF):

OBSERVER: PL



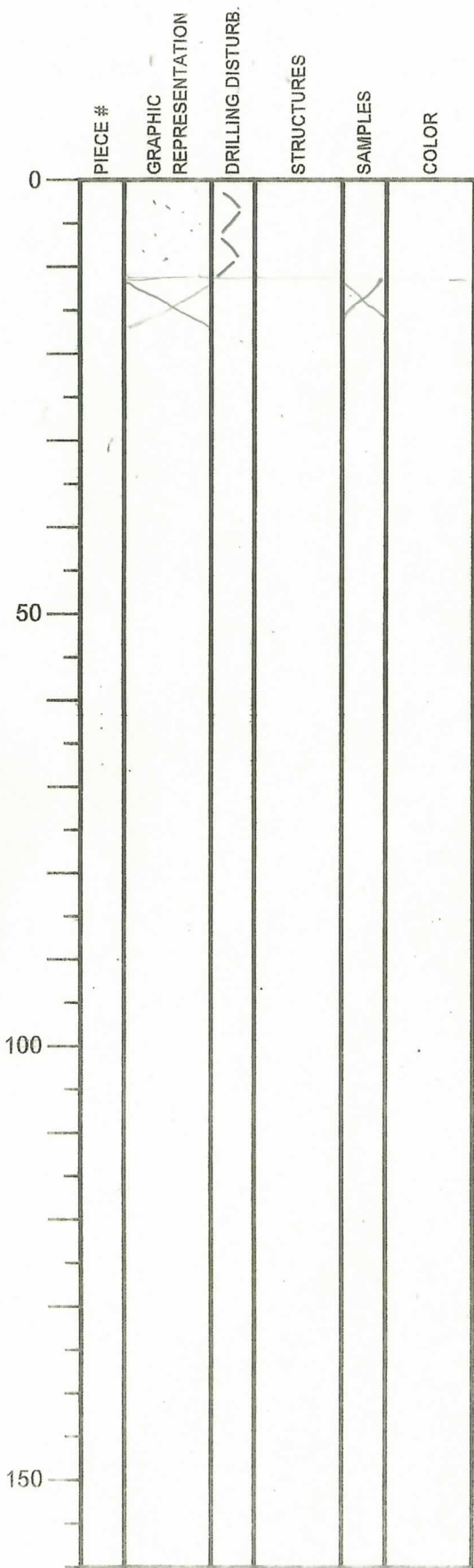
SECTION DESCRIPTION

0-39 cm = silty sand
 Dark grey structureless
 silty sand.
 Drilling disturbed => biscuit.
 WR - sample -> 39-44 cm.

International Ocean Discovery Program Visual Core Description

NO. 5
 DATE: 16/03/2019
 EXP.: 358
 SITE/HOLE: C0024E
 CORE: 1R
 SECTION: CC
 TOP DEPTH (m CSF):

OBSERVER: PC



SECTION DESCRIPTION

0 - 125cm: silty sand.
 Dark grey structureless
 silty sand.
 Heavily drilling disturbed.
 12,5 - 17,5 => WR sample.

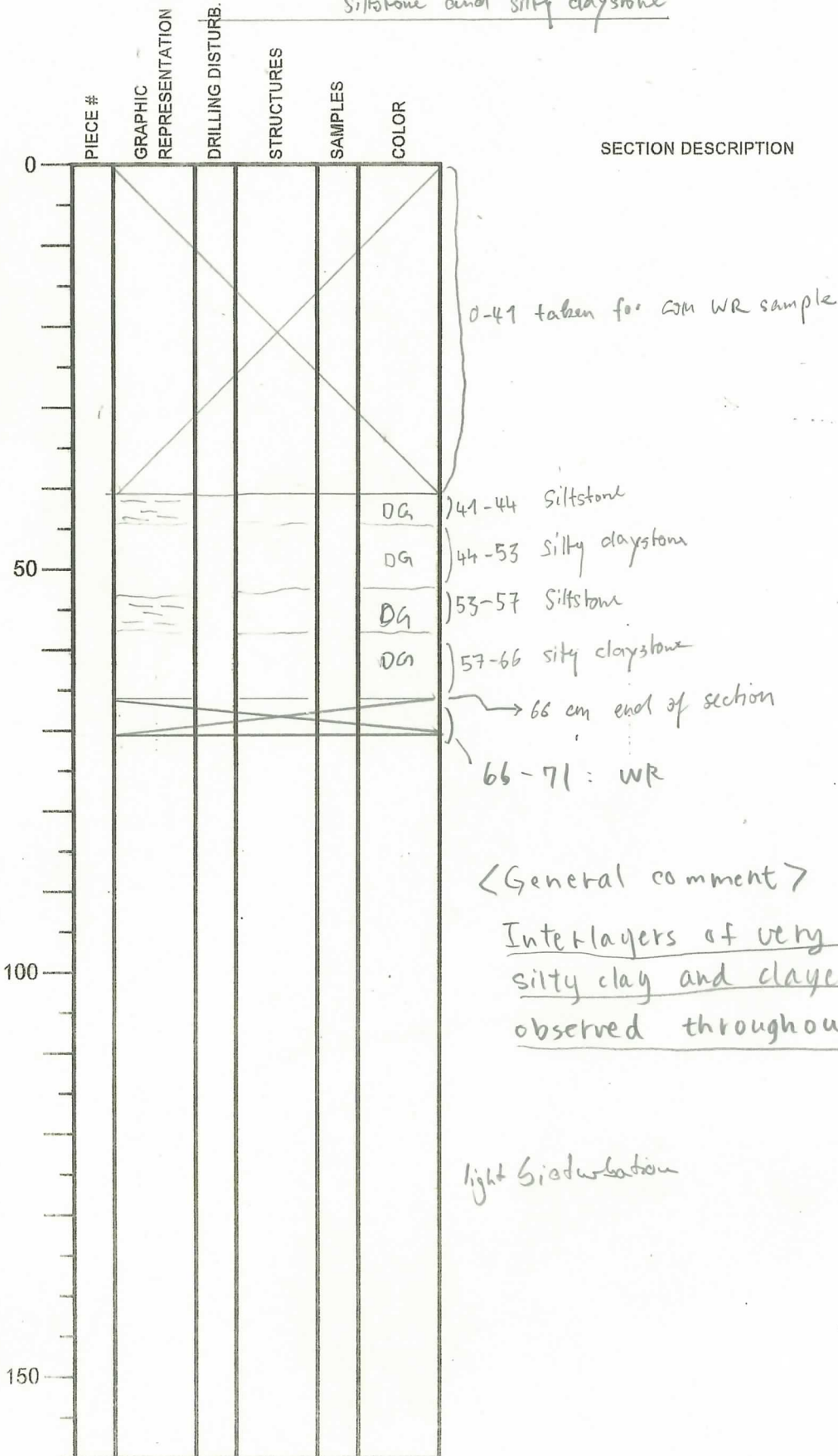
International Ocean Discovery Program

Visual Core Description

41-66 cm: Interbedding of dark grey
Siltstone and silty claystone

NO.
DATE: 17/03/2019
EXP.: 358
SITE/HOLE: C0024 E
CORE: 2R
SECTION: 1
TOP DEPTH (m CSF):

OBSERVER: AD



International Ocean Discovery Program

Visual Core Description

0-80cm: Dark olive gray
SILTY CLAYSTONE

NO.

DATE: 17/03/2019

EXP.: 358

SITE/HOLE: C0024E

CORE: 2R

SECTION: 2

TOP DEPTH (m CSF):

OBSERVER: M4

PIECE #	GRAPHIC REPRESENTATION	DRILLING DISTURB.	STRUCTURES	SAMPLES	COLOR
0		T	DB		Gray
		✓			4/1
		✓			to
		T	DB		Olive
		T	DB		black
		T	DB		3/1
50		T	S		
		T	S		
		T	S		
					END OF SECTION
100					
150					

SECTION DESCRIPTION

0-80 cm =

Silty claystone with occasional very subtle transitions to clayey silt, contain 1-3 mm inclined deformation bands and slight bioturbation (5mm-1.5cm burrows).

Core is severely fractured at 9-22cm. (drilling-induced)

DB = Deformation Band

International Ocean Discovery Program Visual Core Description

NO.
 DATE: 17/03/20 19
 EXP.: 358
 SITE/HOLE: C0024E
 CORE: 2R
 SECTION: 3A
 TOP DEPTH (m CSF):

OBSERVER: MH

	PIECE #	GRAPHIC REPRESENTATION	DRILLING DISTURB.	STRUCTURES	SAMPLES	COLOR	SECTION DESCRIPTION
0							0 - 20 cm : IW
50							
100							
150							

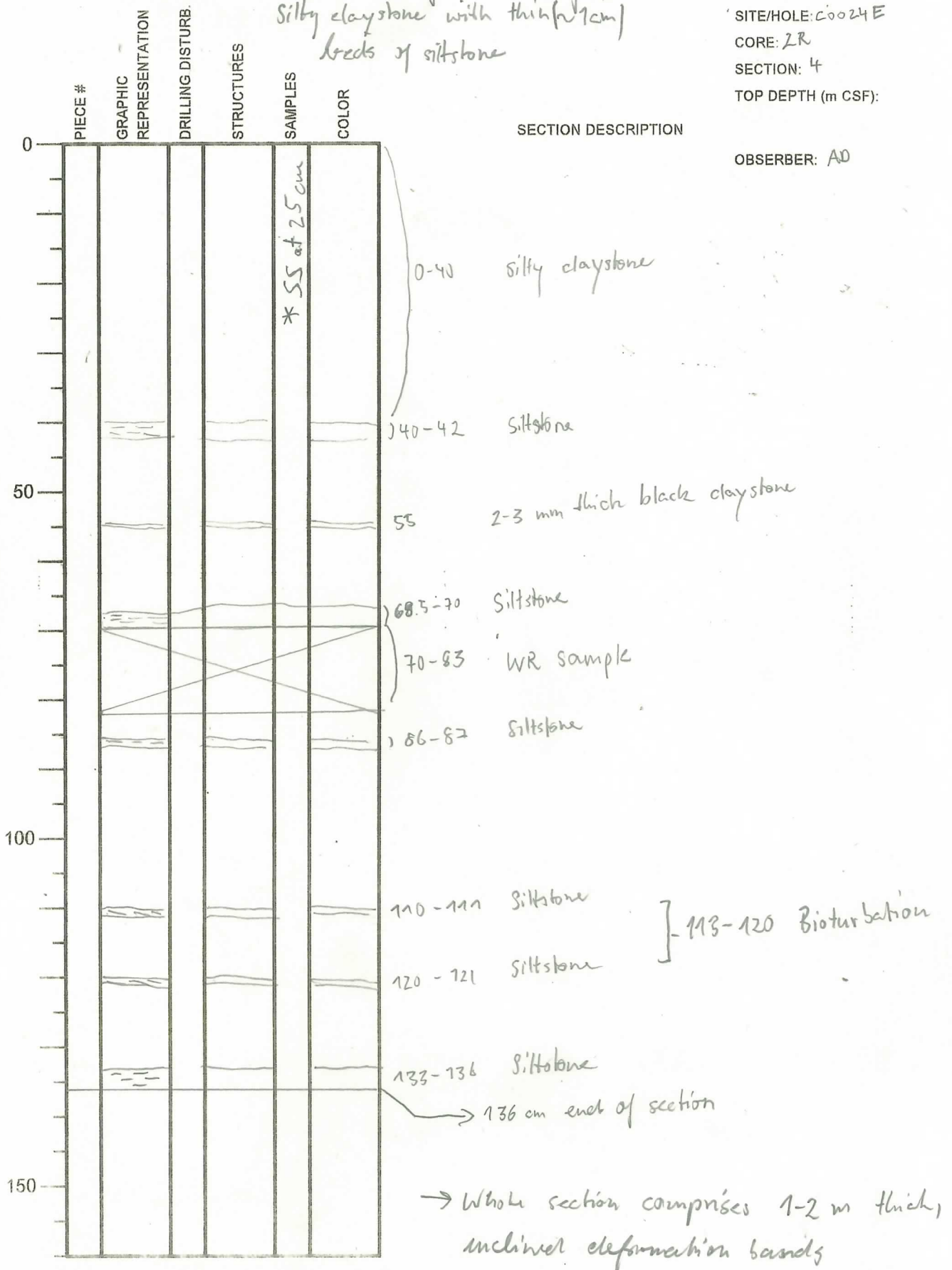
International Ocean Discovery Program

Visual Core Description

0-70 & 83-136 cm: dark gray (or olive gray)
 Silty claystone with thin (1 cm)
 beds of siltstone

NO.
 DATE: 17/03/2019
 EXP.: 358
 SITE/HOLE: C0024E
 CORE: 2R
 SECTION: 4
 TOP DEPTH (m CSF):

OBSERVER: AD



* SS (25 cm)

light Bioturbation VCD sheet 160629.xlsx

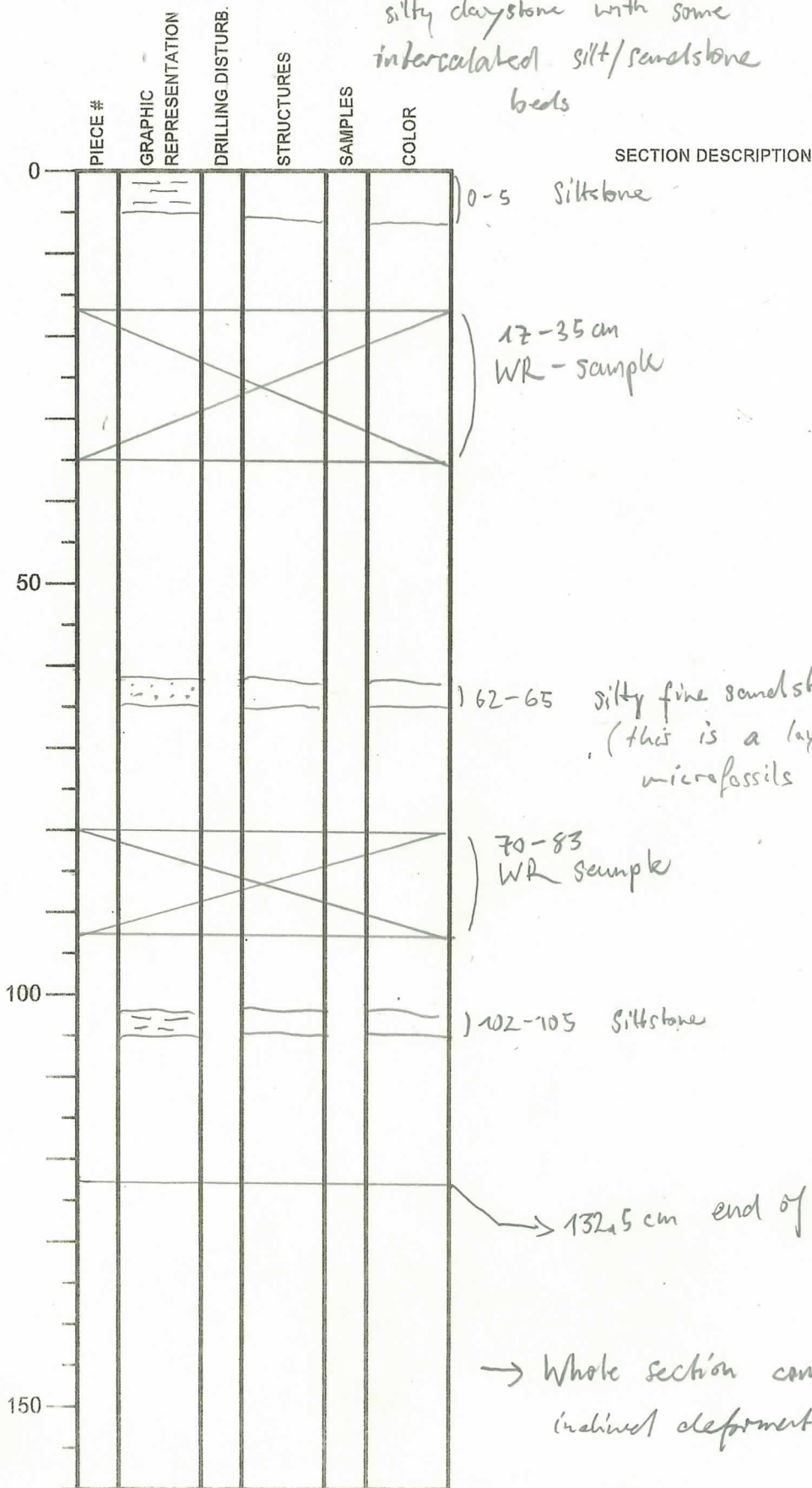
International Ocean Discovery Program

Visual Core Description

0-17, 35-70, 83-132.5 cm: dark gray
silty claystone with some
intercalated silt/sandstone
beds

NO.
DATE: 17/03/2019
EXP.: 358
SITE/HOLE: C0024E
CORE: 2R
SECTION: 5
TOP DEPTH (m CSF):

OBSERVER: AD



→ Whole section comprises 1-2 mm thick
inclined deformation bands

light bioturbation

International Ocean Discovery Program

Visual Core Description

0-17.5cm: Dark olive gray

SILTY CLAYSTONE

NO

DATE 17/03/2019

EXP: 358

SITE/HOLE C0024E

CORE 2R

SECTION: CC

TOP DEPTH (m CSF):

OBSERVER: MH

PIECE #	GRAPHIC REPRESENTATION	DRILLING DISTURB	STRUCTURES	SAMPLES	COLOR
0		/ /	S		
17.5					
23					
50					
100					
150					

SECTION DESCRIPTION

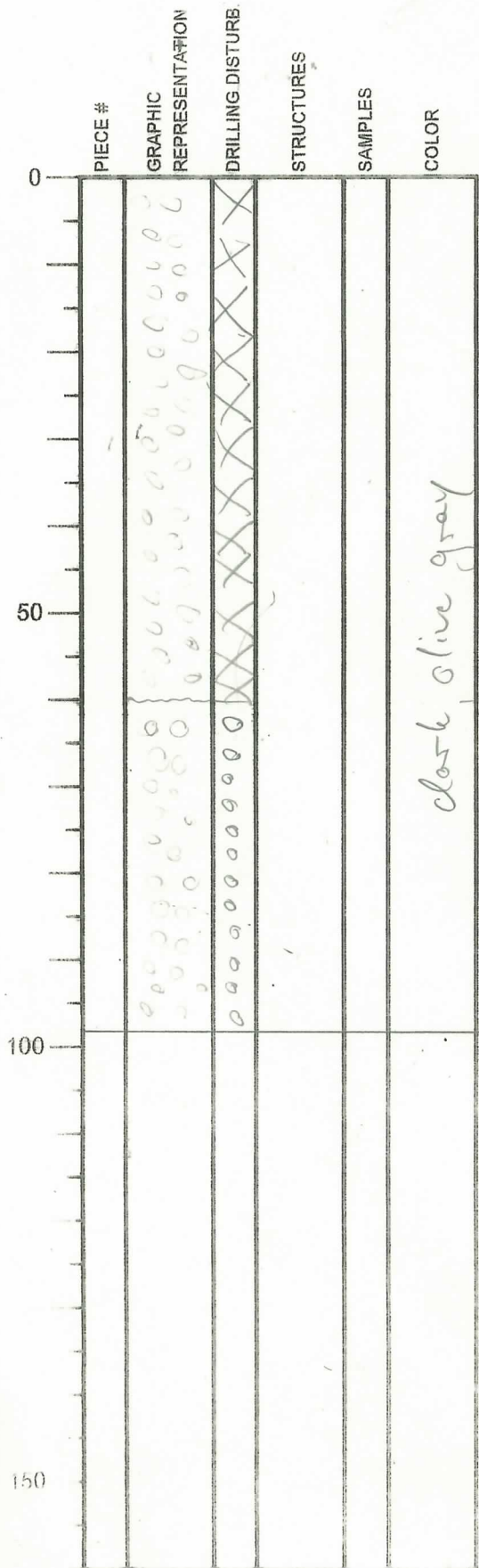
0-17.5cm
 Silty claystone, structureless,
 except for minor bioturbation

17.5-23 PAL (~5mm burrow)

END OF SECTION

International Ocean Discovery Program
Visual Core Description

NO
DATE: 12019-03-17
EXP: 358
SITE/HOLE: C0024 E
CORE: 3R
SECTION: 1
TOP DEPTH (m CSF):



SECTION DESCRIPTION

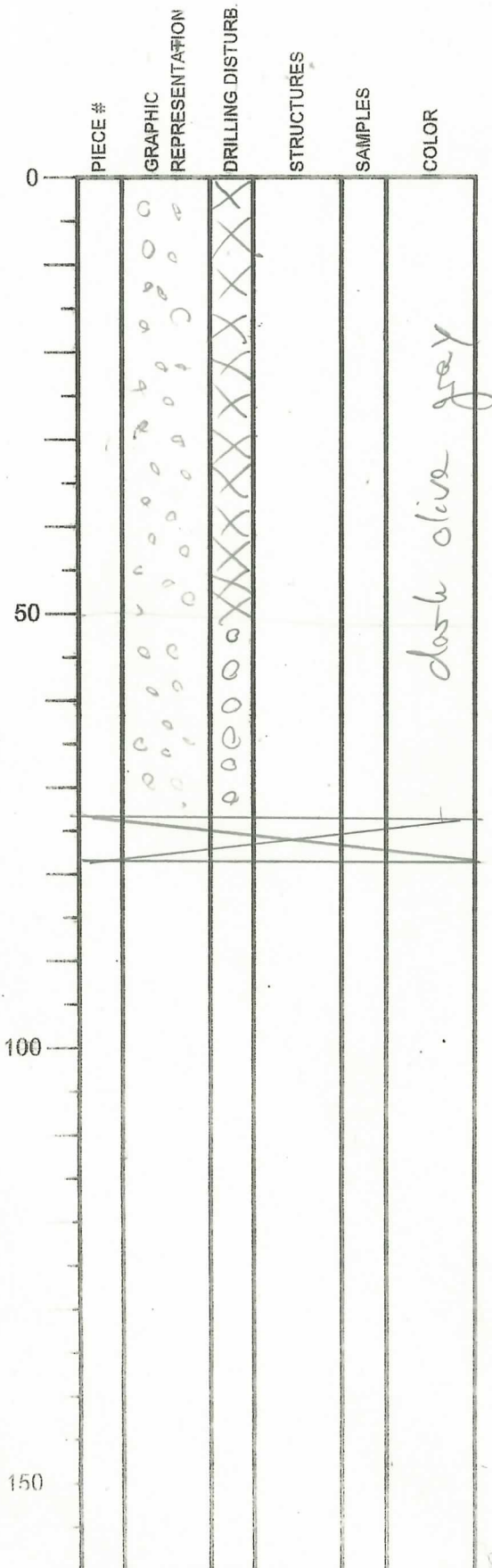
OBSERVER: DJ
0-60: cuttings (1-15 mm, mostly ~5-10 mm)
of mudstone (silty clay to clayey silt)
in mud (same grain size/composition); extreme drilling
disturbance

60-98.5: like above, but
soupy

98.5

International Ocean Discovery Program
Visual Core Description

NO
DATE: 12019-03-17
EXP: 358
SITE/HOLE: C0024E
CORE: 3R
SECTION: 2
TOP DEPTH (m CSF):



SECTION DESCRIPTION

OBSERVER: DJ

0-50: cuttings (1-15 mm, mostly ~5-10 mm)

of dark olive mudstone (silty claystone to clayey silt) in dark olive mudstone (same grain size/composition as cuttings)

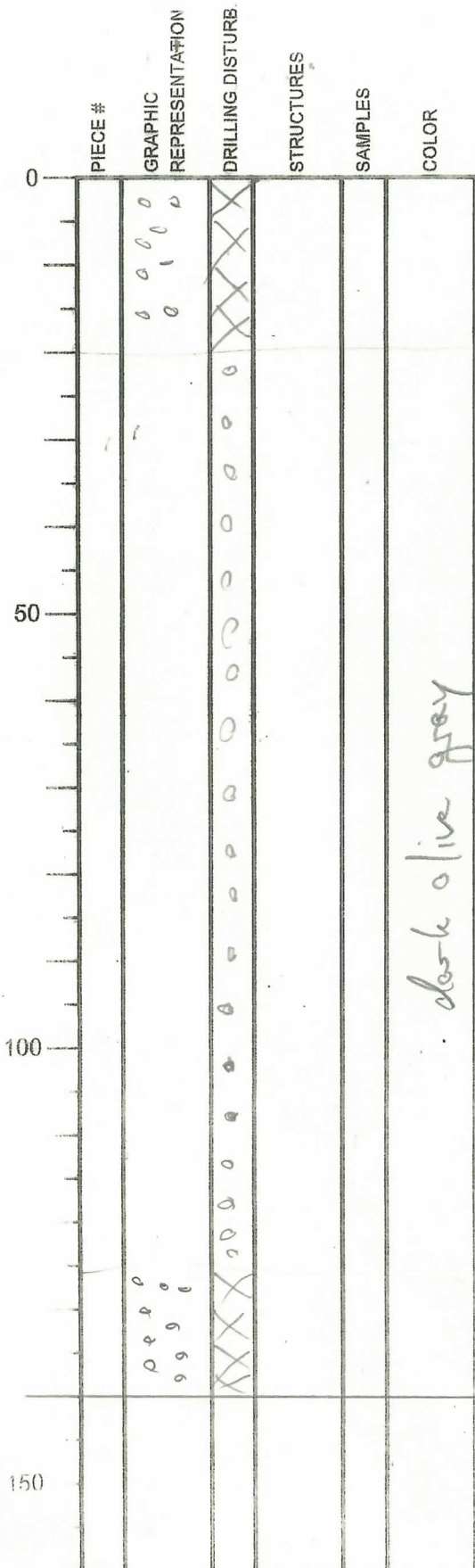
50-74: like above, but soupy

74-79: WR sample

extreme drilling disturbance throughout

International Ocean Discovery Program
 Visual Core Description

NO
 DATE: 12019-03-17
 EXP: 358
 SITE/HOLE C0024 E
 CORE: 3R
 SECTION: 3
 TOP DEPTH (m CSF):



SECTION DESCRIPTION

OBSERVER: DJ

0-20: cuttings (1-15 mm, mostly 5-10 mm) of dark olive gray mudstone (silty clay to clayey silt), in mudstone (same grain size, color, composition as cuttings)

20-126: very soupy dark olive gray mud; cuttings pooled on bottom of lines (see also CT)

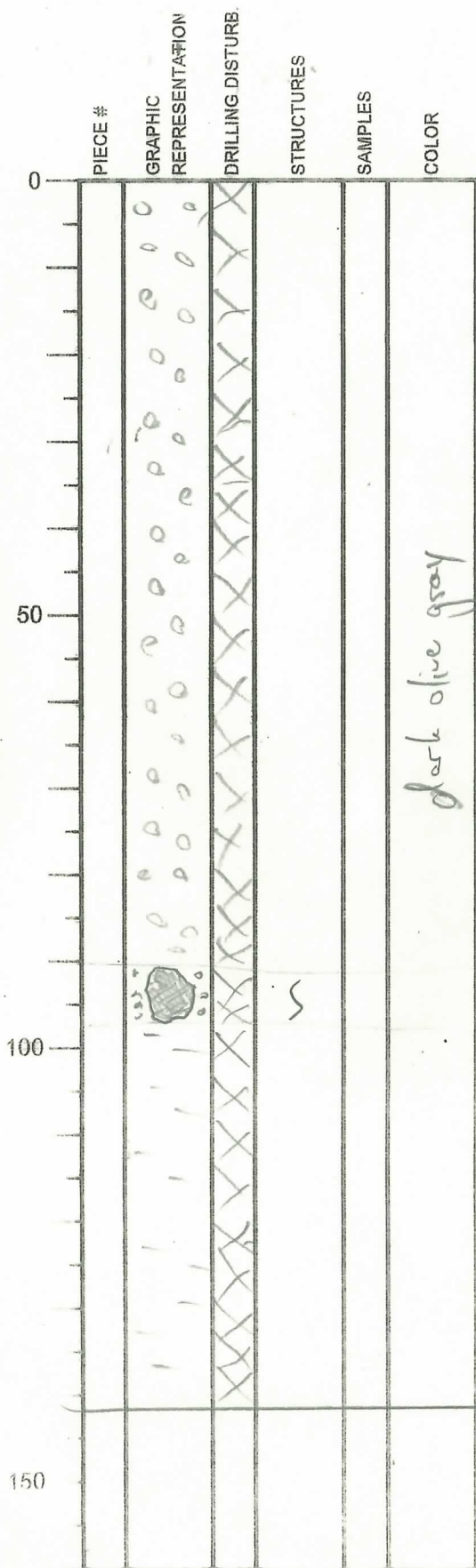
126-140: like above, slightly less soupy

dark olive gray

140

International Ocean Discovery Program
Visual Core Description

NO
DATE: 7/20/19-03-17
EXP: 358
SITE/HOLE: C0024E
CORE: 3R
SECTION: 4
TOP DEPTH (m CSF):



SECTION DESCRIPTION

OBSERVER: [Signature]

0-90: cuttings (1-20 mm, mostly 5-10 mm; more coarse grains than sections 1-3) of dark olive gray mudstone in mud of same composition

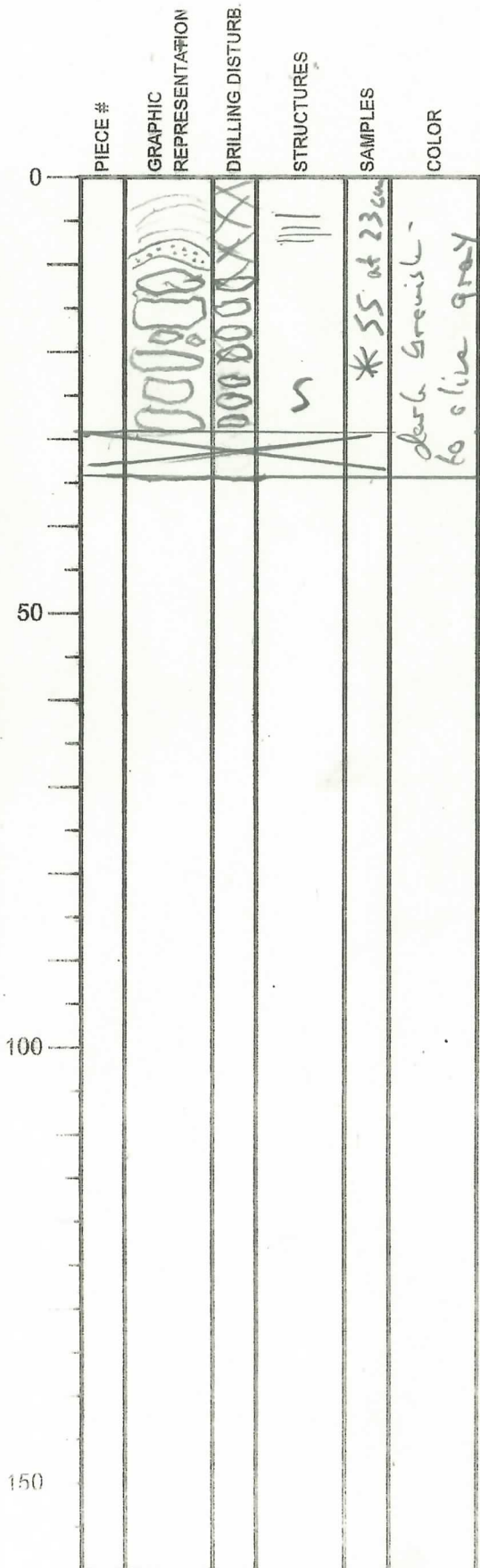
90-97: single intact piece of slightly bioturbated mudstone (~70x50 mm)

97-142: dark olive gray mud somewhat consolidated (most likely from drilling)

142

International Ocean Discovery Program
Visual Core Description

NO
DATE: 19-03-17
EXP: 358
SITE/HOLE: C0024E
CORE: 3R
SECTION: CC
TOP DEPTH (m CSF):



SECTION DESCRIPTION

OBSERVER:

0-34.5: dark brownish-gray to dark olive gray mudstone; heavily fractured/bisquits from cuttings some sedimentary features (lamination, slight disturbance) preserved

29.5-34.5: LR sample

International Ocean Discovery Program

Visual Core Description

NO.
 DATE: 3/17/2019
 EXP.: 358
 SITE/HOLE: C0024E
 CORE: 4R
 SECTION: 1
 TOP DEPTH (m CSF):

	PIECE #	GRAPHIC REPRESENTATION	DRILLING DISTURB.	STRUCTURES	SAMPLES	COLOR
0			L	SS		
10			L	SS		
20			L	SS		
30			L	SS		
40			L	SS		
50					* SS at 54 cm	
60			L	SS ≡		
77		X		AI	-	WR
83						
100						
150						

SECTION DESCRIPTION

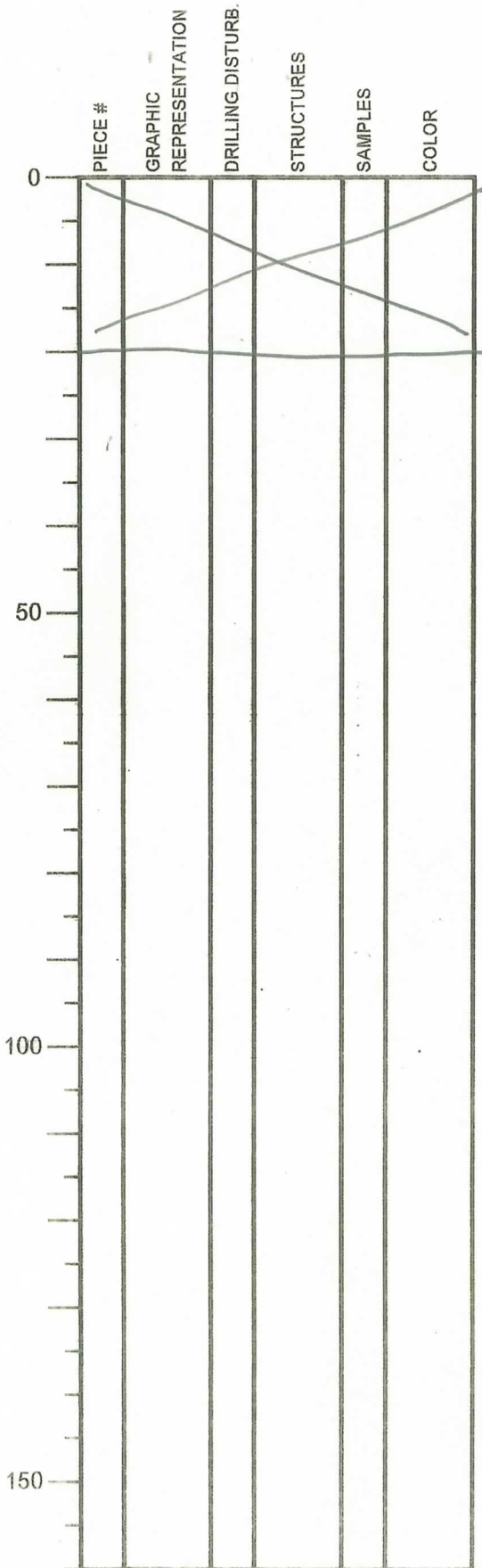
OBSERVER: MBU

0-77 cm
 gray silty claystone to clayey
 siltstone, mottled
 faint laminae in areas with
 less bioturbation
 moderately fractured

International Ocean Discovery Program Visual Core Description

NO.
DATE: 3/17/2019
EXP.: 358
SITE/HOLE: C0024E
CORE: 4R
SECTION: 2
TOP DEPTH (m CSF):

OBSERVER: MB4



SECTION DESCRIPTION

IW - WR

International Ocean Discovery Program

Visual Core Description

NO.
 DATE: 3/17/2019
 EXP.: 358
 SITE/HOLE: C0024E
 CORE: 4R
 SECTION: 3
 TOP DEPTH (m CSF):

	PIECE #	GRAPHIC REPRESENTATION	DRILLING DISTURB.	STRUCTURES	SAMPLES	COLOR
0						
50			+	S ₄		
			+			
			+			
			+	S ₄		
			+	≡		
			+	S ₄		
100						
						110
						115
			+	S ₄		
						130
150						

SECTION DESCRIPTION

OBSERVER: MRU

gray silty claystone to clayey
 siltstone
 mottled by bioturbation
 scattered laminae
 moderately fractured

International Ocean Discovery Program
Visual Core Description

NO.
DATE: 120/19-03-17
EXP.: 358
SITE/HOLE: C0024E
CORE: 4R
SECTION: 4
TOP DEPTH (m CSF):

OBSERVER: DJ

PIECE #	GRAPHIC REPRESENTATION	DRILLING DISTURB.	STRUCTURES	SAMPLES	COLOR
0			S		
			S	*	most light gray
			S		
			S		
			S		
			S		
50			S		
			S		
			S		
			S		
100			≡		dark gray
			≡ S		
			≡ S		
150					

SECTION DESCRIPTION



0-146:
6-13: dark gray clayey, siltstone slightly bioturbated some slight lamination overall moderately fractured, locally more drilling disturbance

6-13: light to medium gray tuff, bioturbated

*: SS at 9 cm

International Ocean Discovery Program Visual Core Description

NO.
 DATE: 1/20/19-03-17
 EXP.: 358
 SITE/HOLE: C0024E
 CORE: 4R
 SECTION: CC
 TOP DEPTH (m CSF):

	PIECE #	GRAPHIC REPRESENTATION	DRILLING DISTURB.	STRUCTURES	SAMPLES	COLOR
0						<p>dark gray</p>
50						
100						
150						

SECTION DESCRIPTION

OBSERVER: DJ

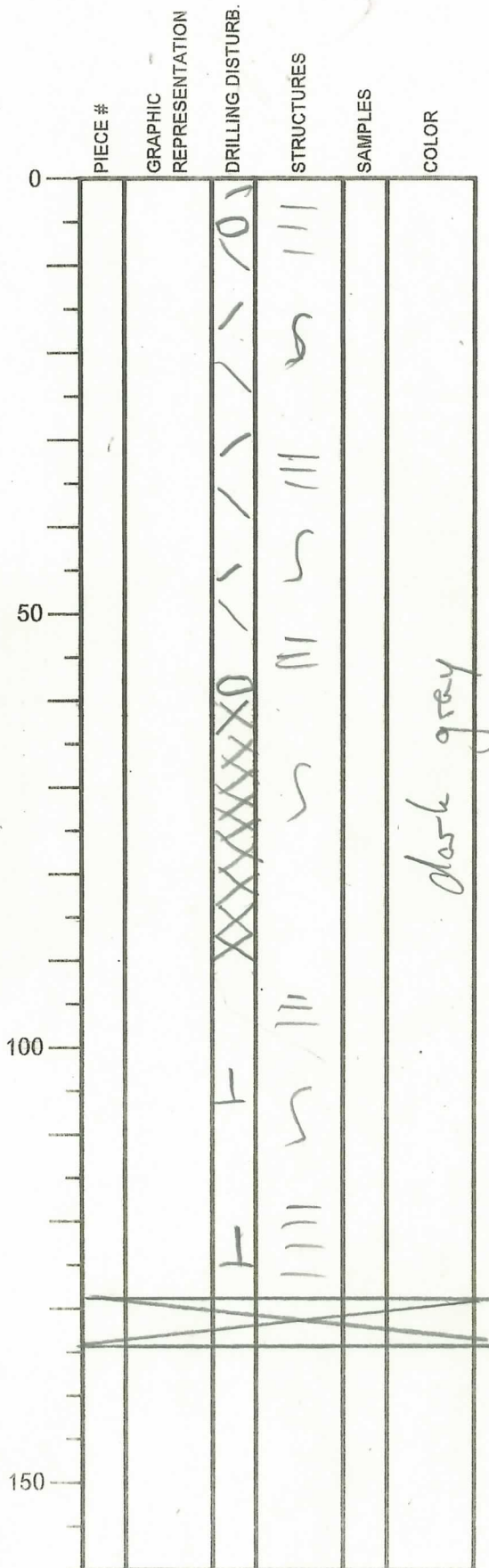
dark gray clayey siltstone.
 moderately to heavily fractured; some
 lamination

25-30 : PAL WR

International Ocean Discovery Program
Visual Core Description

NO.
DATE: 1 / 20 19-03-17
EXP.: 358
SITE/HOLE: C0024 E
CORE: 5R
SECTION: 1
TOP DEPTH (m CSF):

OBSERVER: DJ



SECTION DESCRIPTION

0-129:

dark gray silty claystone
to clayey siltstone
mottled, diffuse
lamination

moderate to heavy drilling
disturbance (~5-50 mm
large pieces), few
biscuits

slightly coarser (siltstone)
intervals at: 15-16 cm
32-34 cm

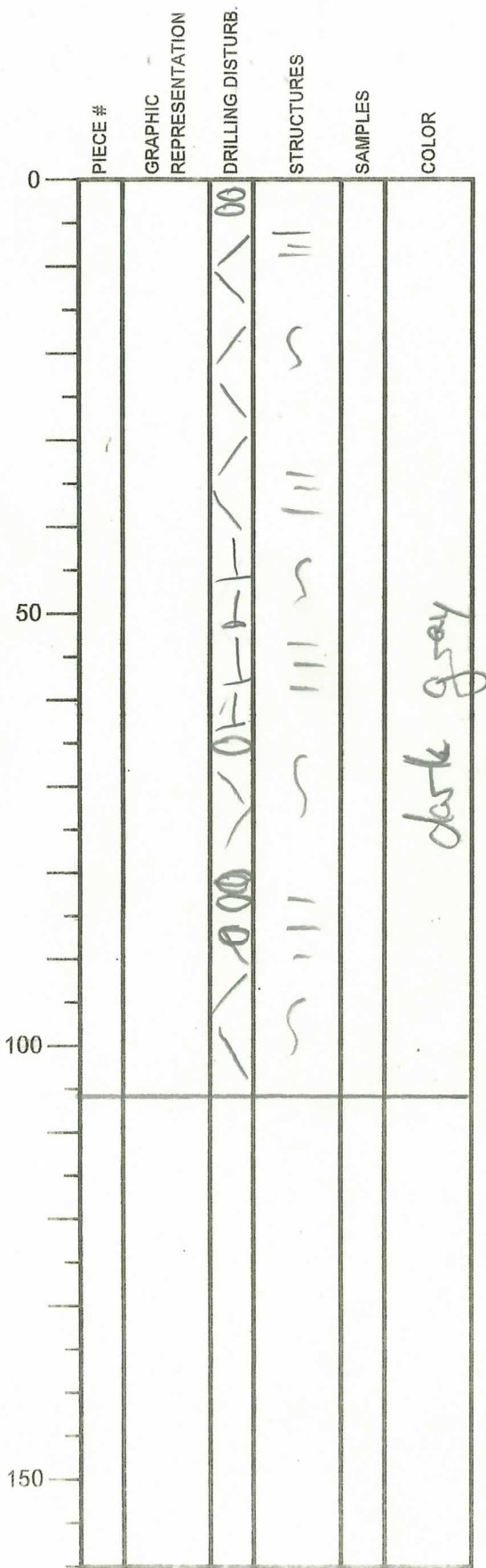
90 cm
92-93 cm
102-103 cm
107-110 cm

129 WR sample
134 PAL

International Ocean Discovery Program
Visual Core Description

NO.
DATE: -- / -- / 20
EXP.: 358
SITE/HOLE: C0024E
CORE: 5R
SECTION: 2
TOP DEPTH (m CSF):

OBSERVER: DJ



SECTION DESCRIPTION

0-106:

dark gray silty claystone
to clayey siltstone
mottled, diffusely laminated
largely fractured by
drilling (max. piece
size ~50 mm)
some biscuiting

slightly coarser layers
(clayey siltstone) at:

106

5-6 cm	59-66
14-15 cm	74-87
19-20 cm	90-93
23-26 cm	97-98
28-29	102-106
30-33	
36-37	
40-41	
47	

silty layers often coincide with biscuit boundaries

International Ocean Discovery Program Visual Core Description

NO.
 DATE: 1/20 19-03-17
 EXP.: 358
 SITE/HOLE: C0024E
 CORE: 5R
 SECTION: 3
 TOP DEPTH (m CSF):

OBSERVER: DJ

	PIECE #	GRAPHIC REPRESENTATION	DRILLING DISTURB.	STRUCTURES	SAMPLES	COLOR
0						
50						
100						
150						

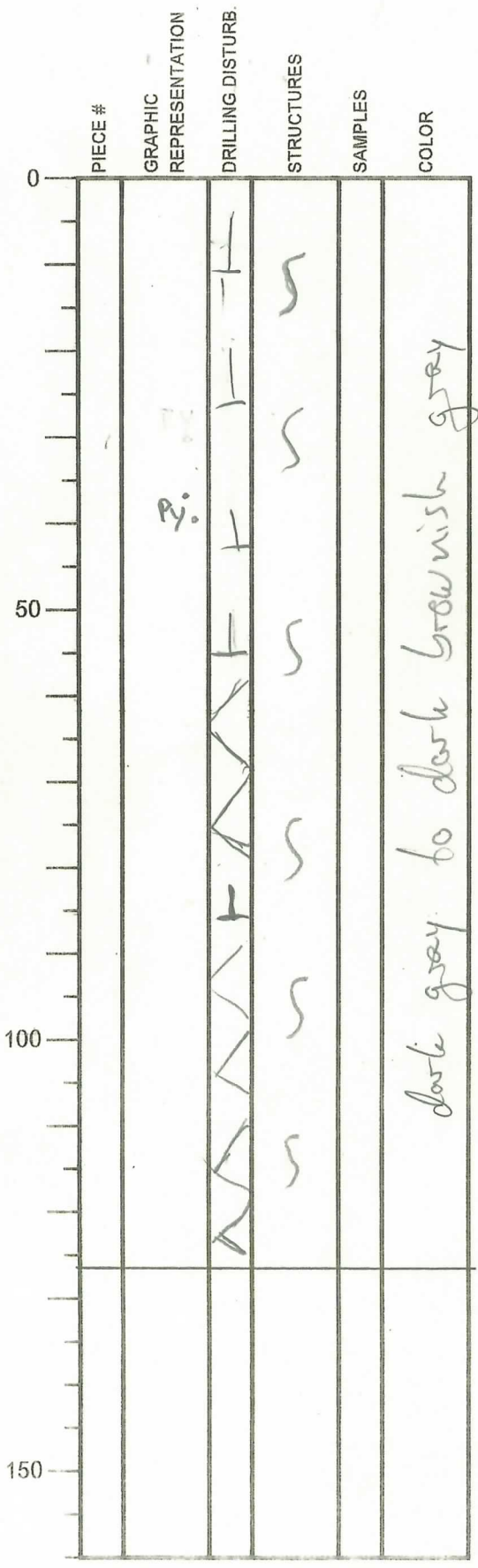
SECTION DESCRIPTION

0-20
 IW WR

International Ocean Discovery Program
Visual Core Description

NO.
DATE: 19-03-17
EXP.: 358
SITE/HOLE: C0024E
CORE: 5R
SECTION: 4
TOP DEPTH (m CSF):

OBSERVER: DJ



SECTION DESCRIPTION

0-126
dark gray to dark brownish gray clayey siltstone
mottled, microfossils
disseminated, macroscopic pyrite
mostly moderate, some heavy fracturing due to drilling
sandy silt / silty (fine) sand
at:
11-12 cm 101-105
17-23 109-114
32 120-122
39-40 124-126
48-50
56-60
62-68
76-79
82-86
88-94

International Ocean Discovery Program Visual Core Description

NO. _____
 DATE: 1 / 20 19-03-17
 EXP.: 358
 SITE/HOLE: C0024E
 CORE: 5R
 SECTION: 5
 TOP DEPTH (m CSF): _____

PIECE #	GRAPHIC REPRESENTATION	DRILLING DISTURB.	STRUCTURES	SAMPLES	COLOR
0			S	31 cm	
			S	* SS out	
			S		
			S		
50			S		
			S		
			S		
			S		
			S		
			S		
			S		
100			S		
			S		
			S		
			S		
			S		
			S		
			S		
			S		
150			S		

SECTION DESCRIPTION

0-20: dark gray silty claystone / clayey siltstone
 OBSERVER: DJ

20-66 cm: dark gray clayey siltstone & fine sandstone
 graded siltstone / fine sandstone
 at: 20-31 cm
 31-44
 44-49
 49-55
 55-64 ←

moderate drilling deformation

Note: smear slide shows coarser beds are silt-size, convincing terrigenous turbidites, with graded beds.

Deepest
silt turbidite.

549.52
 .64

 550.26

International Ocean Discovery Program Visual Core Description

NO.
DATE: 1 / 20 19 - 03 - 18
EXP.: 358
SITE/HOLE: C0024E
CORE: 5R
SECTION: CC
TOP DEPTH (m CSF):

OBSERVER: *[Signature]*

PIECE #	GRAPHIC REPRESENTATION	DRILLING DISTURB.	STRUCTURES	SAMPLES	COLOR
0					
	(((
22					
27					
50					
100					
150					

SECTION DESCRIPTION

0-27
dark to medium
gray clayey siltstone
drilling induced
compaction
features

22-27 PAL WR

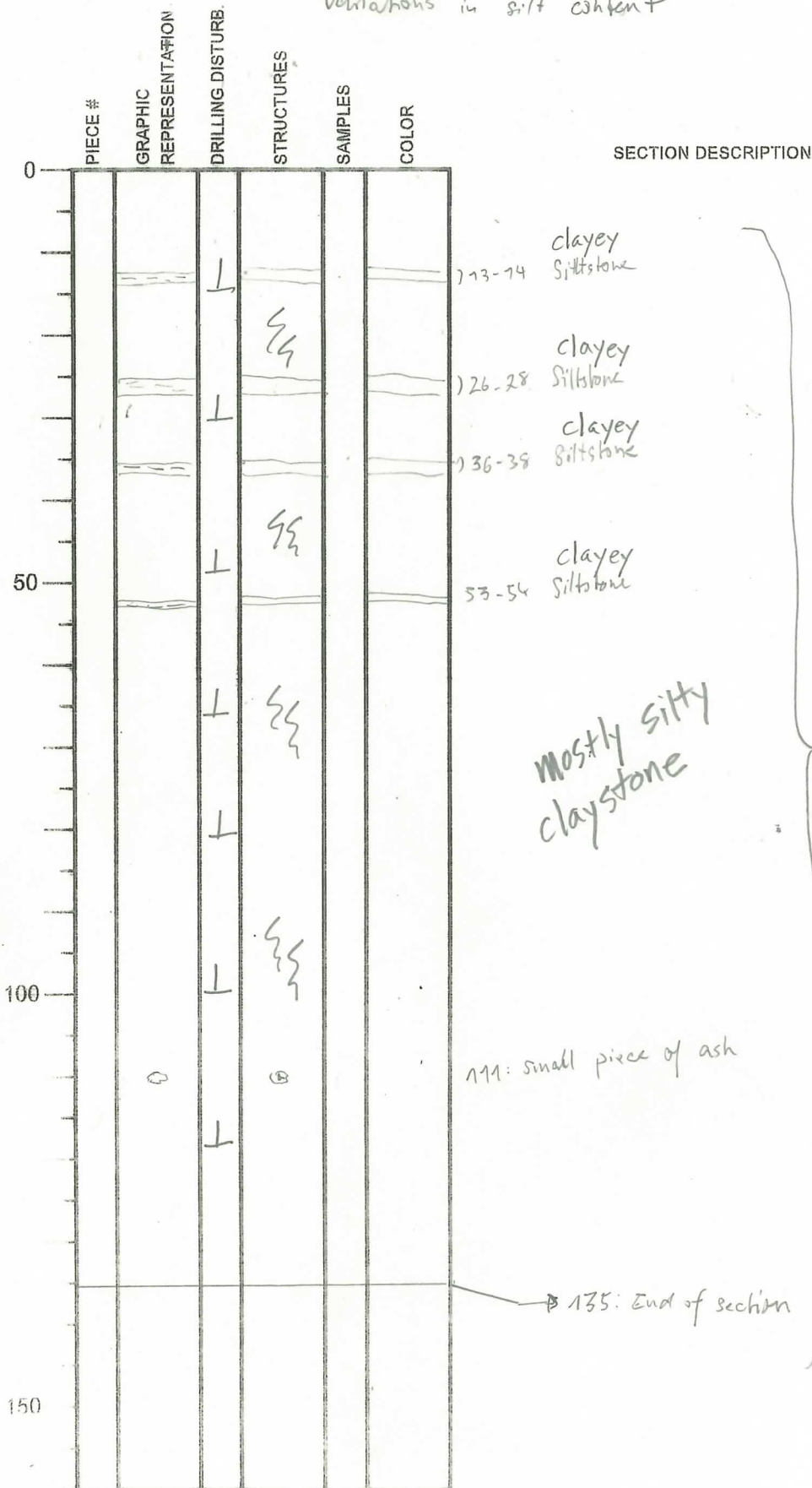
International Ocean Discovery Program

Visual Core Description

0-135 cm: silty claystone with subtle variations in silt content

NO
 DATE: 18/03/2019
 EXP: 358
 SITE/HOLE: C0024E
 CORE: 6R
 SECTION: 1
 TOP DEPTH (m CSF):

OBSERVER: AD



Mostly silty claystone

111: small piece of ash

All earth grey

grain size variations are subtle

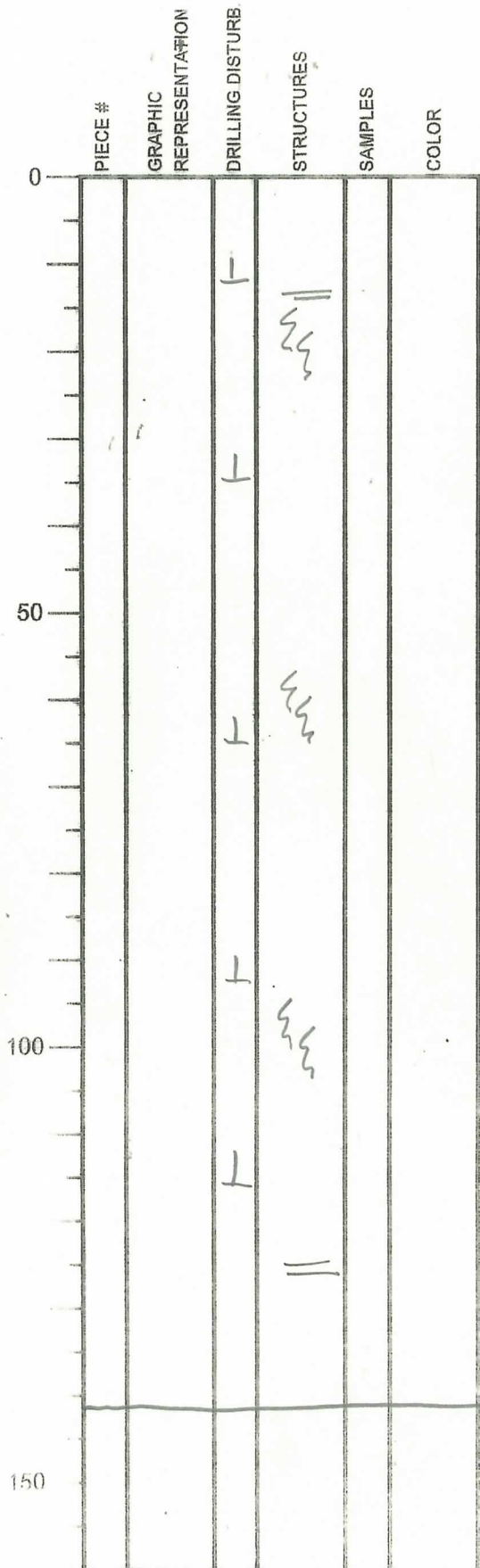
Within range of silty clay to clayey silt

mottled by bioturbation

Moderately fractured

International Ocean Discovery Program
 Visual Core Description

NO
 DATE: 3/18/2019
 EXP: 358
 SITE/HOLE: C0024E
 CORE: 6R
 SECTION: 2
 TOP DEPTH (m CSF):



SECTION DESCRIPTION

OBSERVER: MRU

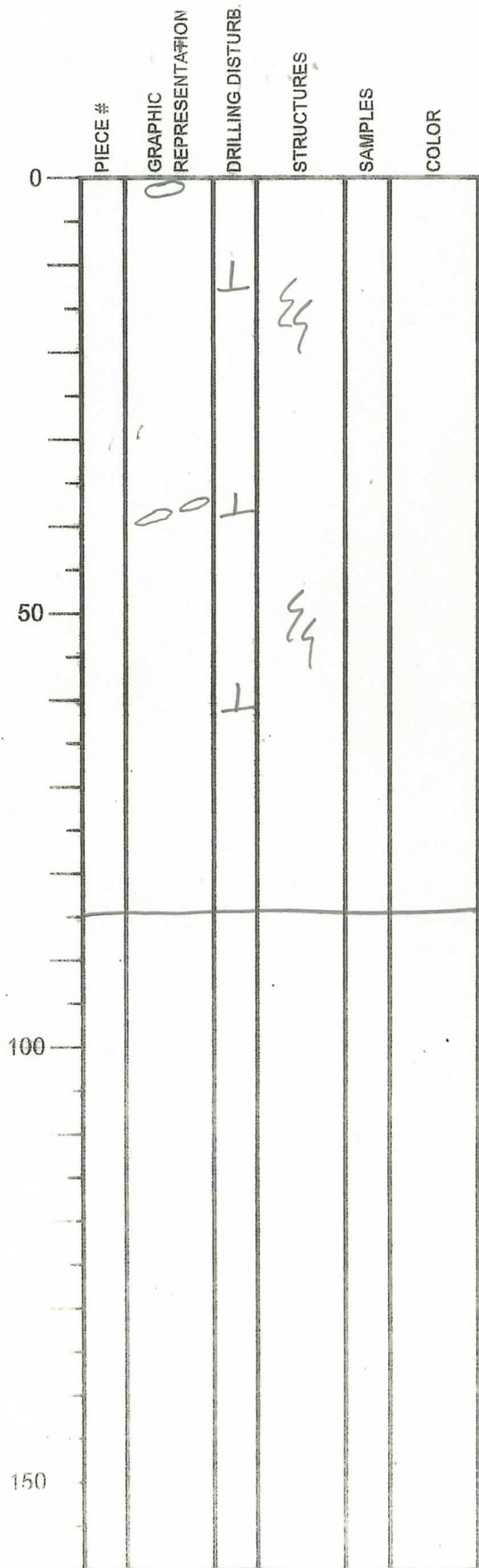
0-141 cm
 gray silty claystone to
 clayey siltstone
 mottled by bioturbation
 Moderately fractured
 scattered laminae, ash pods

141 cm

International Ocean Discovery Program
 Visual Core Description

NO
 DATE 3-18/2019
 EXP: 358
 SITE/HOLE C0024E
 CORE: 6R
 SECTION: 3
 TOP DEPTH (m CSF):

OBSERVER: MBU



SECTION DESCRIPTION

0-85 cm
 gray silty claystone to clayey
 siltstone
 scattered ash pods
 moderately fractured
 mottled by bioturbation

47-49 cm
 Ash layer
 (intensively fractured in vicinity)

85 cm

International Ocean Discovery Program
Visual Core Description

NO
DATE: 3/18/2019
EXP: 358
SITE/HOLE: C0024E
CORE: 6R
SECTION: 4
TOP DEPTH (m CSF):

OBSERVER: MBU

PIECE #	GRAPHIC REPRESENTATION	DRILLING DISTURB	STRUCTURES	SAMPLES	COLOR
0					
	(PY)	L	SS	* SS	
	(PY)	L	SS	* SS	
50		L			
100					
150					

SECTION DESCRIPTION

0-70 cm

gray silty claystone to clayey siltstone

scattered ash pods, pyrite

moderately fractured

mottled by bioturbation

tiny white specs - forams

70 cm

International Ocean Discovery Program
Visual Core Description

NO
DATE: 3/18/2019
EXP: 358
SITE/HOLE: C0024E
CORE: 6R
SECTION: CC
TOP DEPTH (m CSF):

OBSERVER: MBU

PIECE #	GRAPHIC REPRESENTATION	DRILLING DISTURB	STRUCTURES	SAMPLES	COLOR
0					
50					
100					
150					

SECTION DESCRIPTION

0-25 cm
silty claystone to clayey
siltstone
PAL-WR