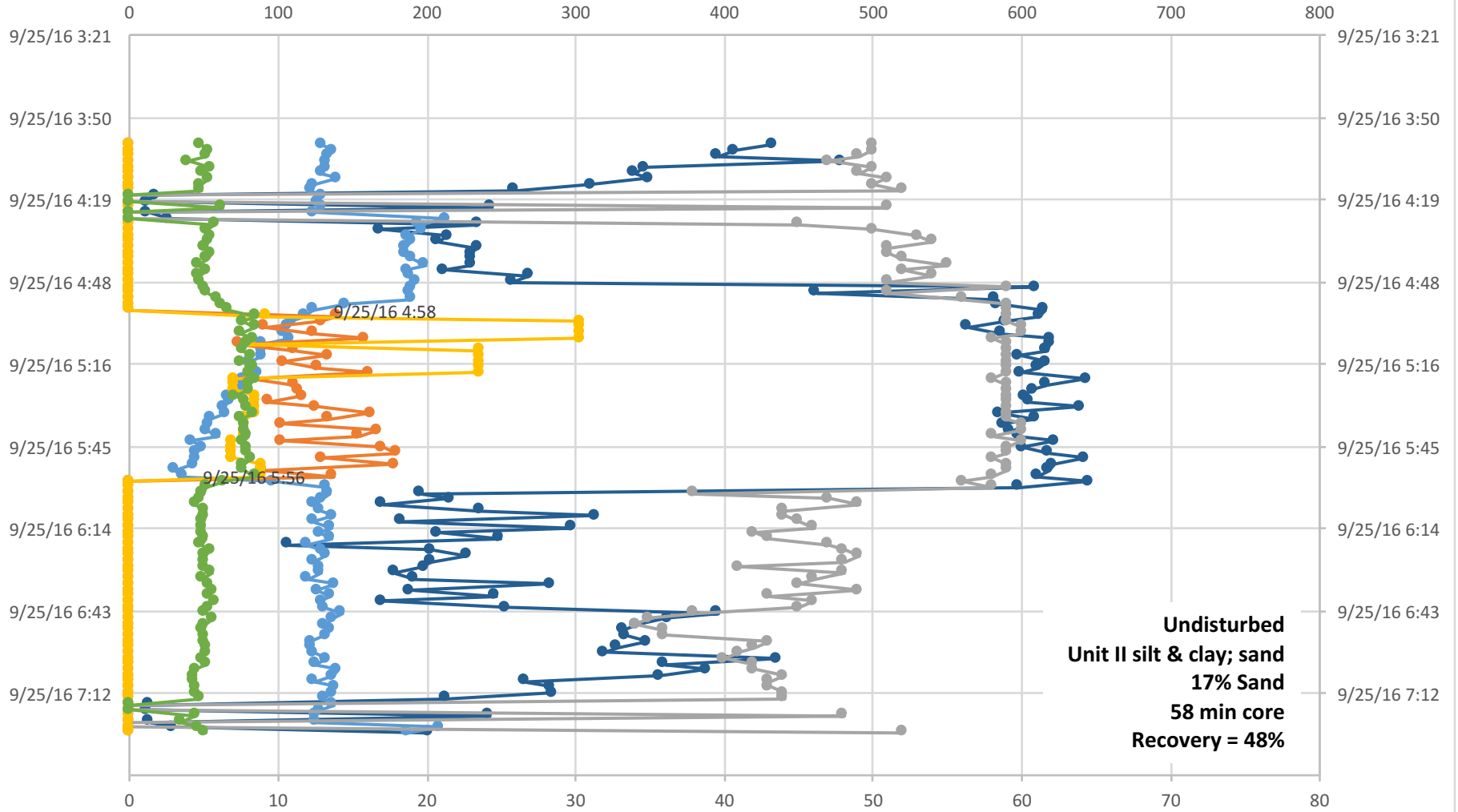


U1481A-2R

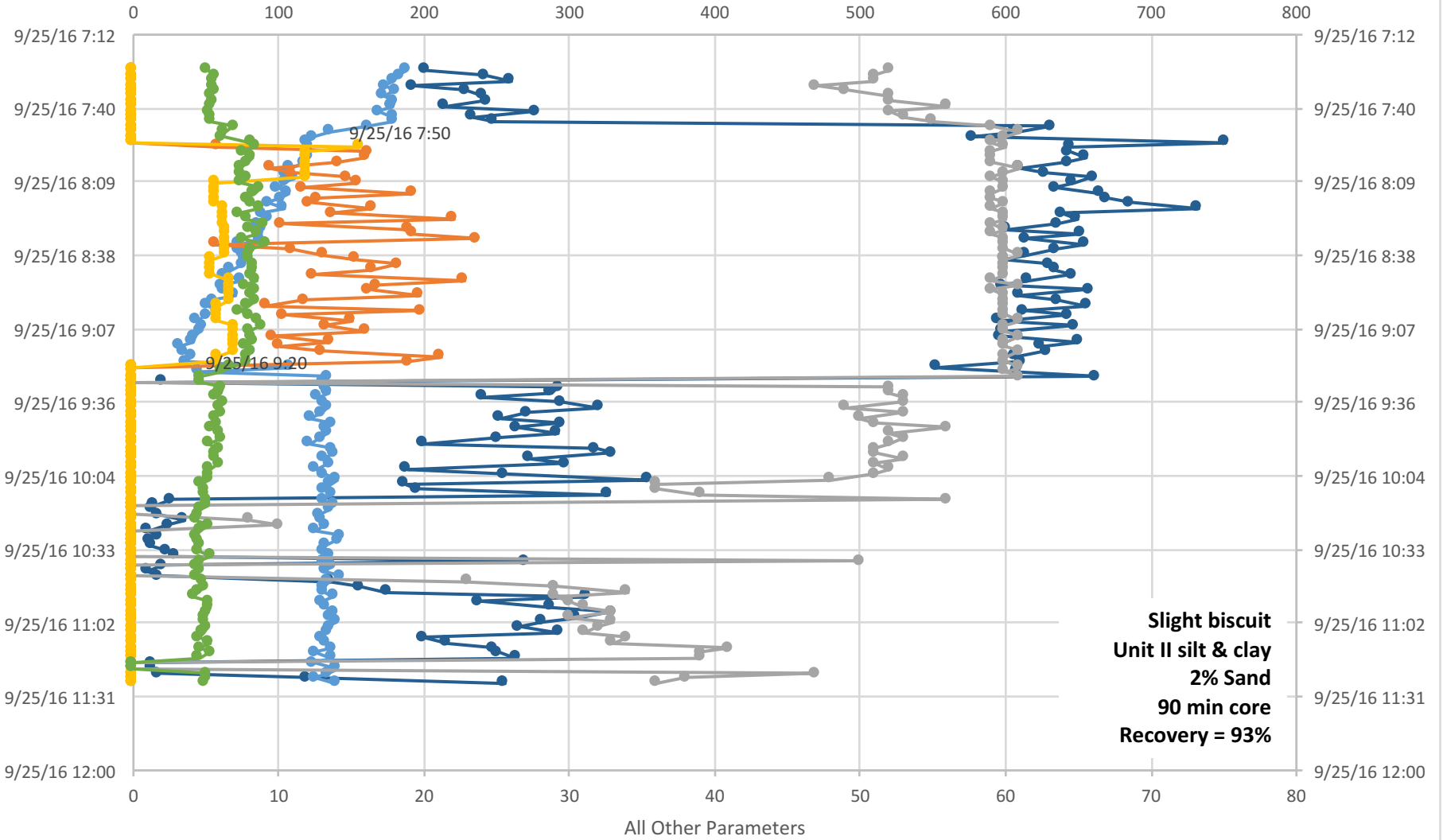
Standpipe Pressure (psi)



● Stand Pipe Pressure (psi) ● Block Position ● WOB klb (AD Hook Load) ● MUD Pmps TOT (SPM) ● ROP (m/hr) ● TD Torque (k ft-lb)

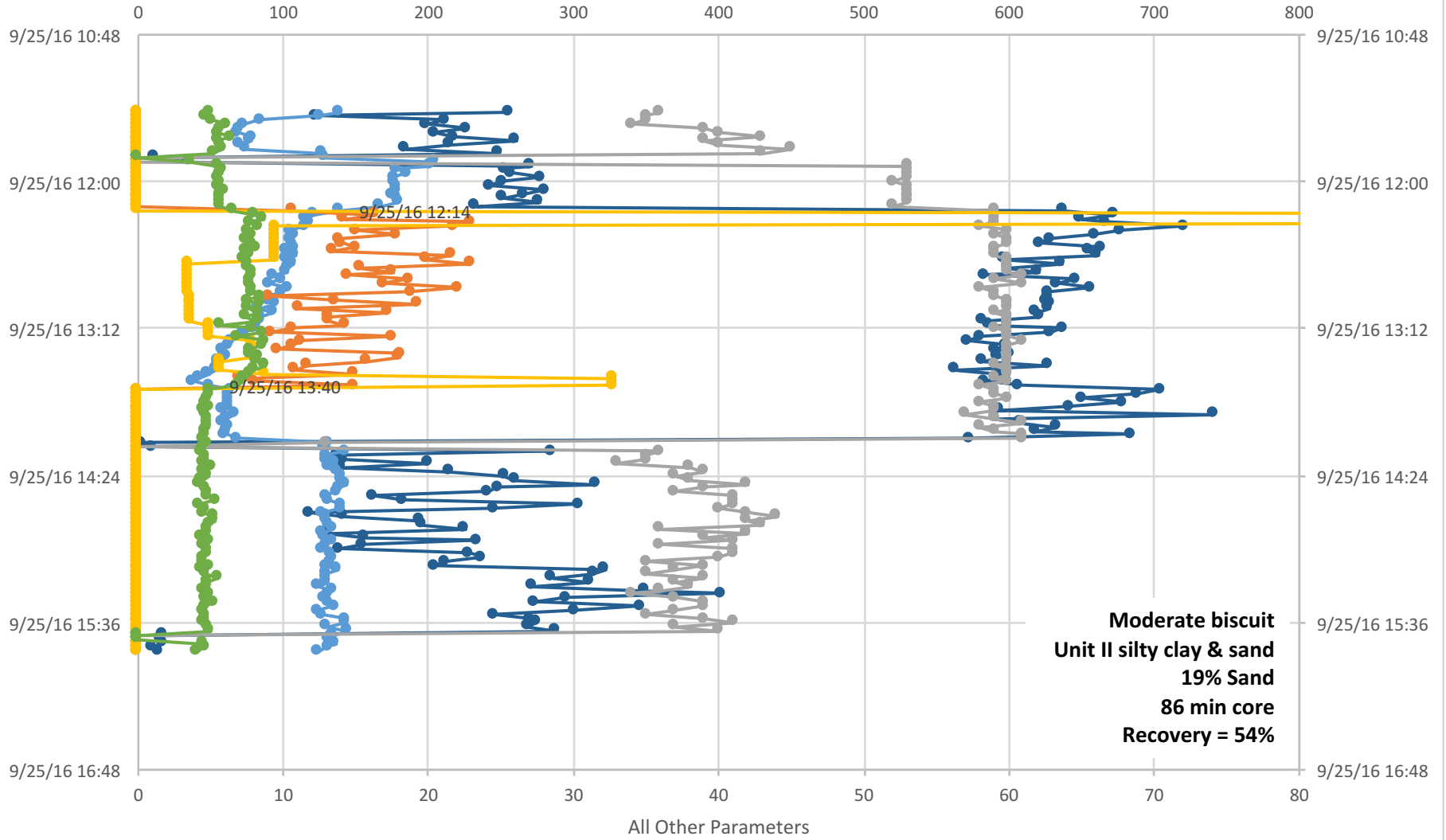
U1481A-3R

Standpipe Pressure (psi)



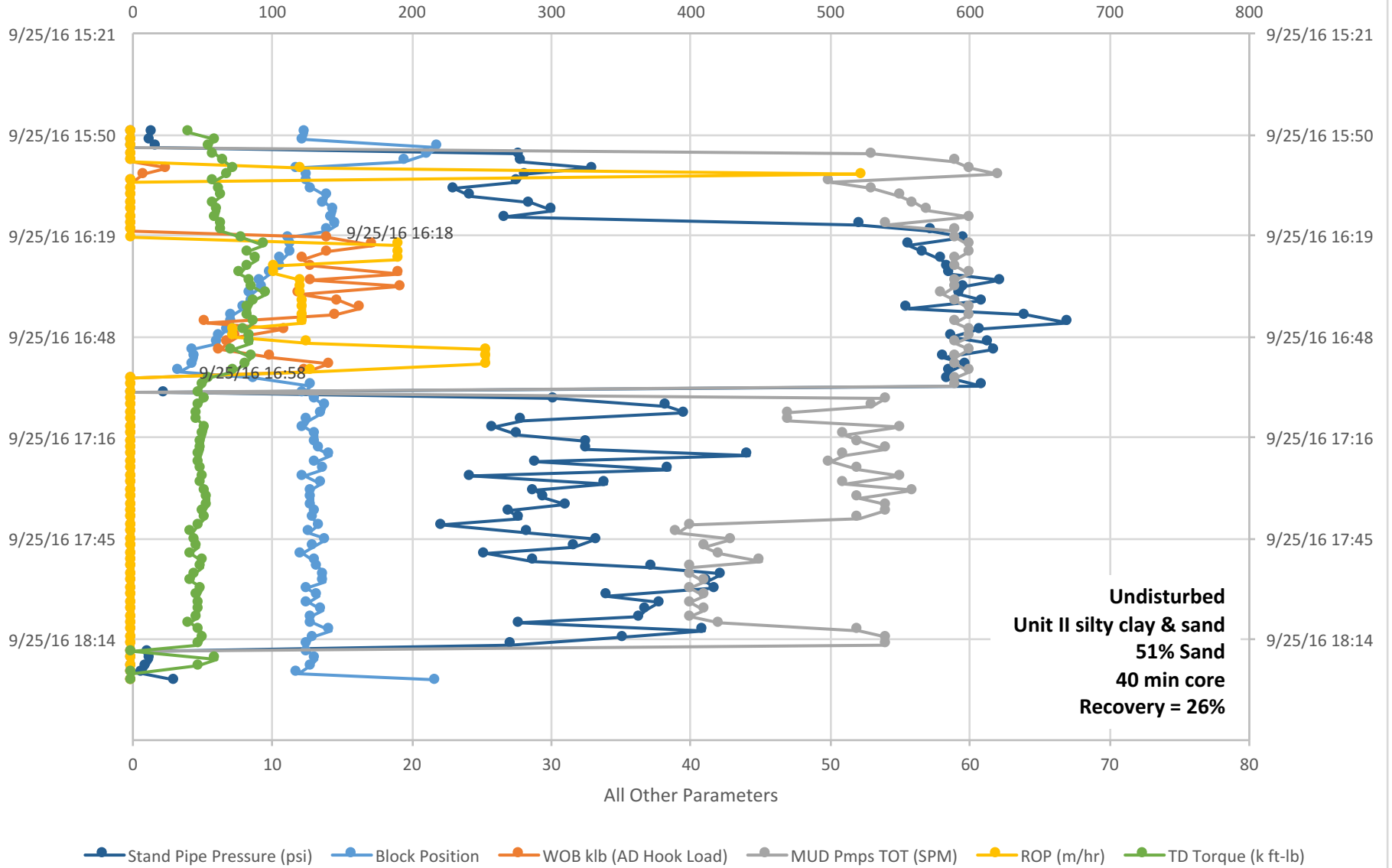
U1481A-4R

Standpipe Pressure (psi)



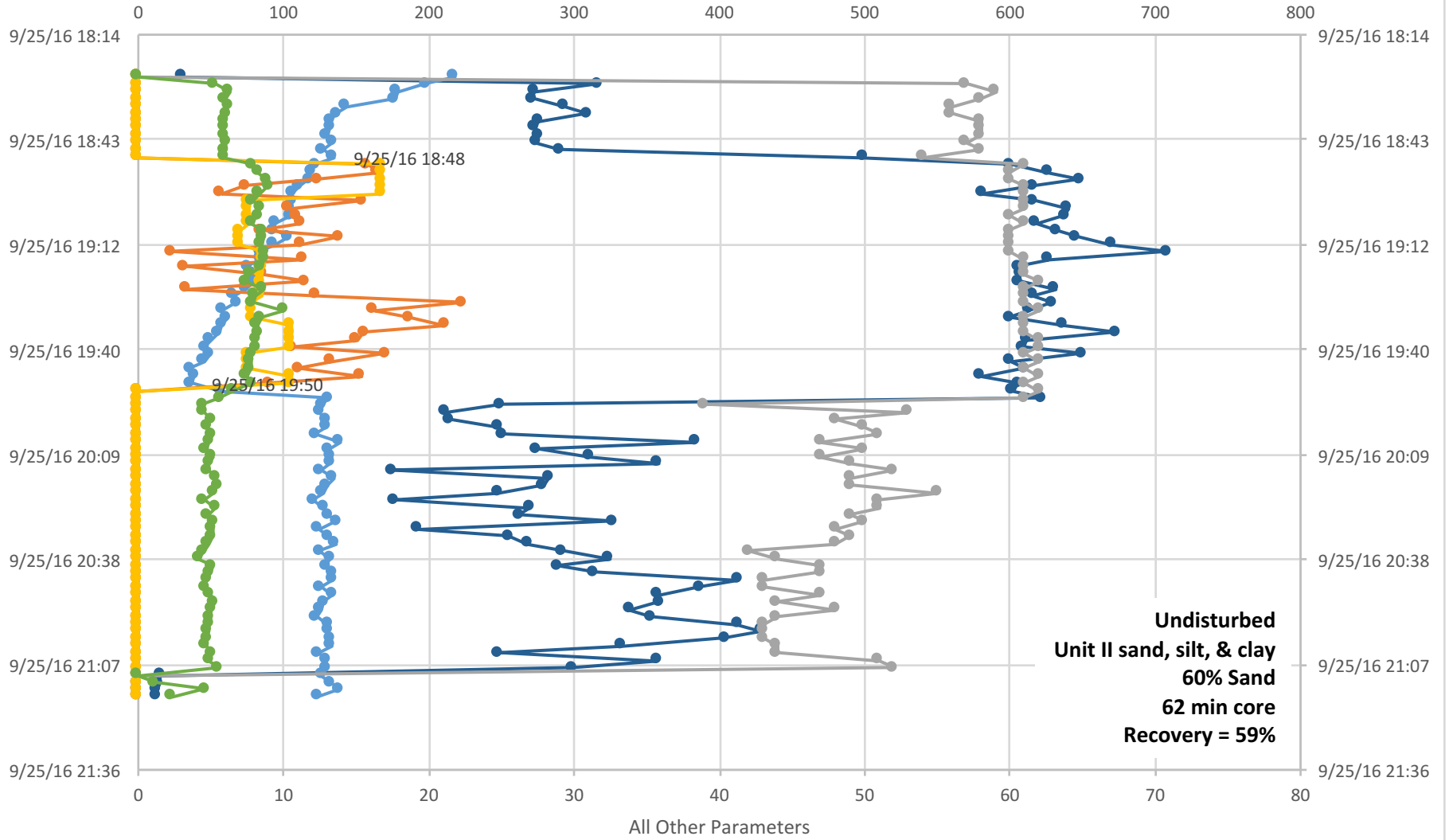
U1481A-5R

Standpipe Pressure (psi)



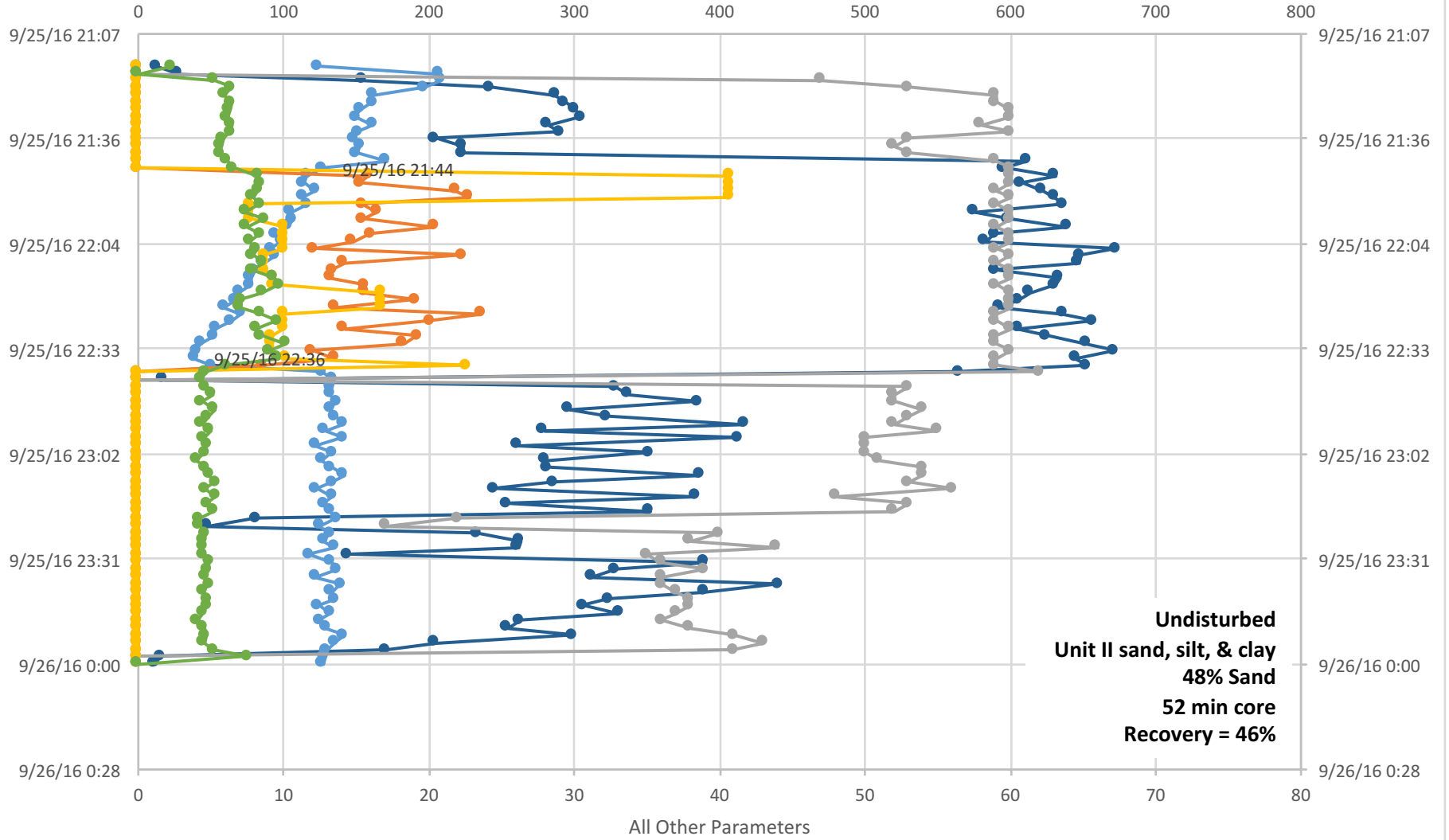
U1481A-6R

Standpipe Pressure (psi)



U1481A-7R

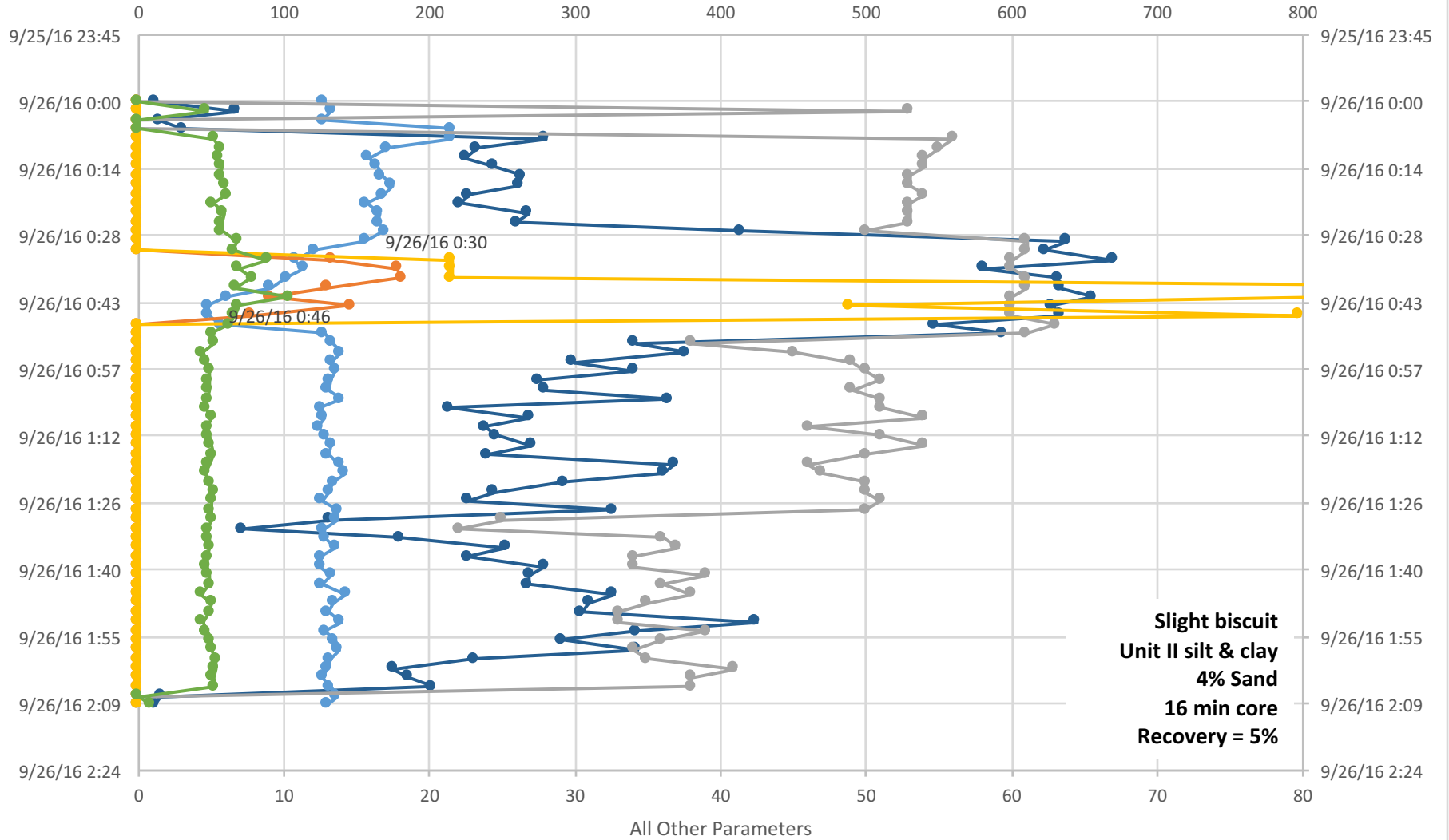
Standpipe Pressure (psi)



—●— Stand Pipe Pressure (psi) —●— Block Position —●— WOB klb (AD Hook Load) —●— MUD Pmps TOT (SPM) —●— ROP (m/hr) —●— TD Torque (k ft-lb)

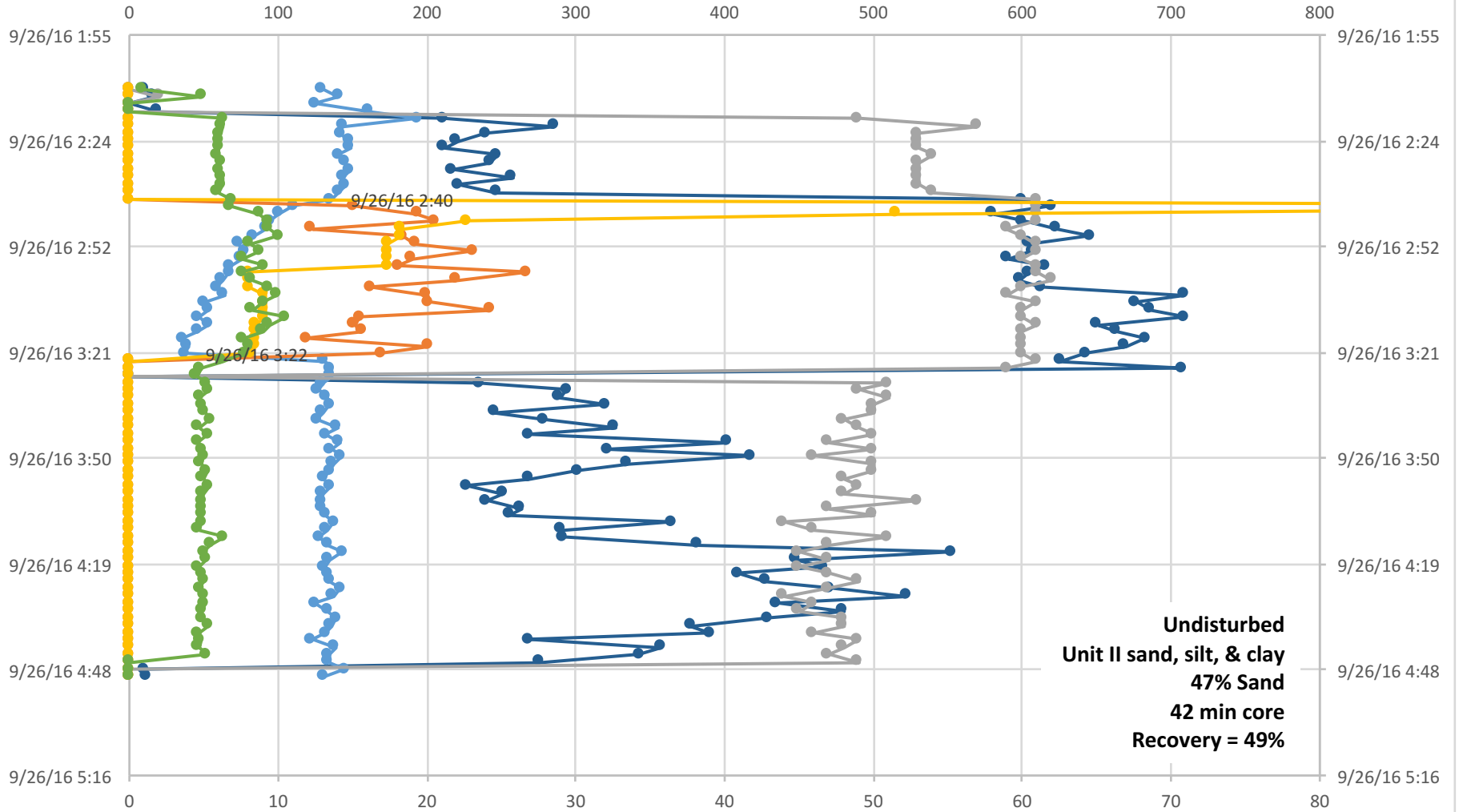
U1481A-8R

Standpipe Pressure (psi)



U1481A-9R

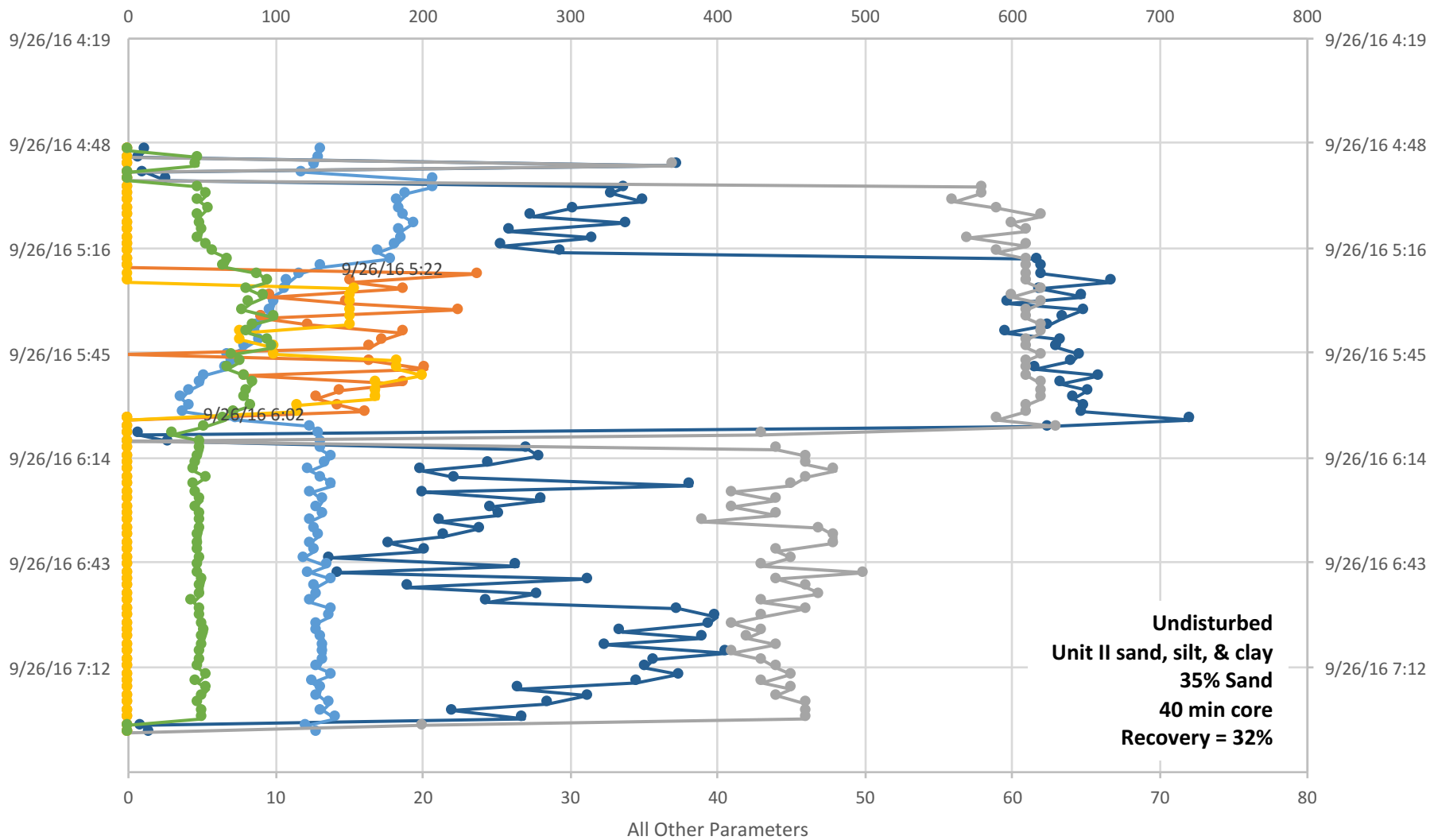
Standpipe Pressure (psi)



● Stand Pipe Pressure (psi) ● Block Position ● WOB klb (AD Hook Load) ● MUD Pmps TOT (SPM) ● ROP (m/hr) ● TD Torque (k ft-lb)

U1481A-10R

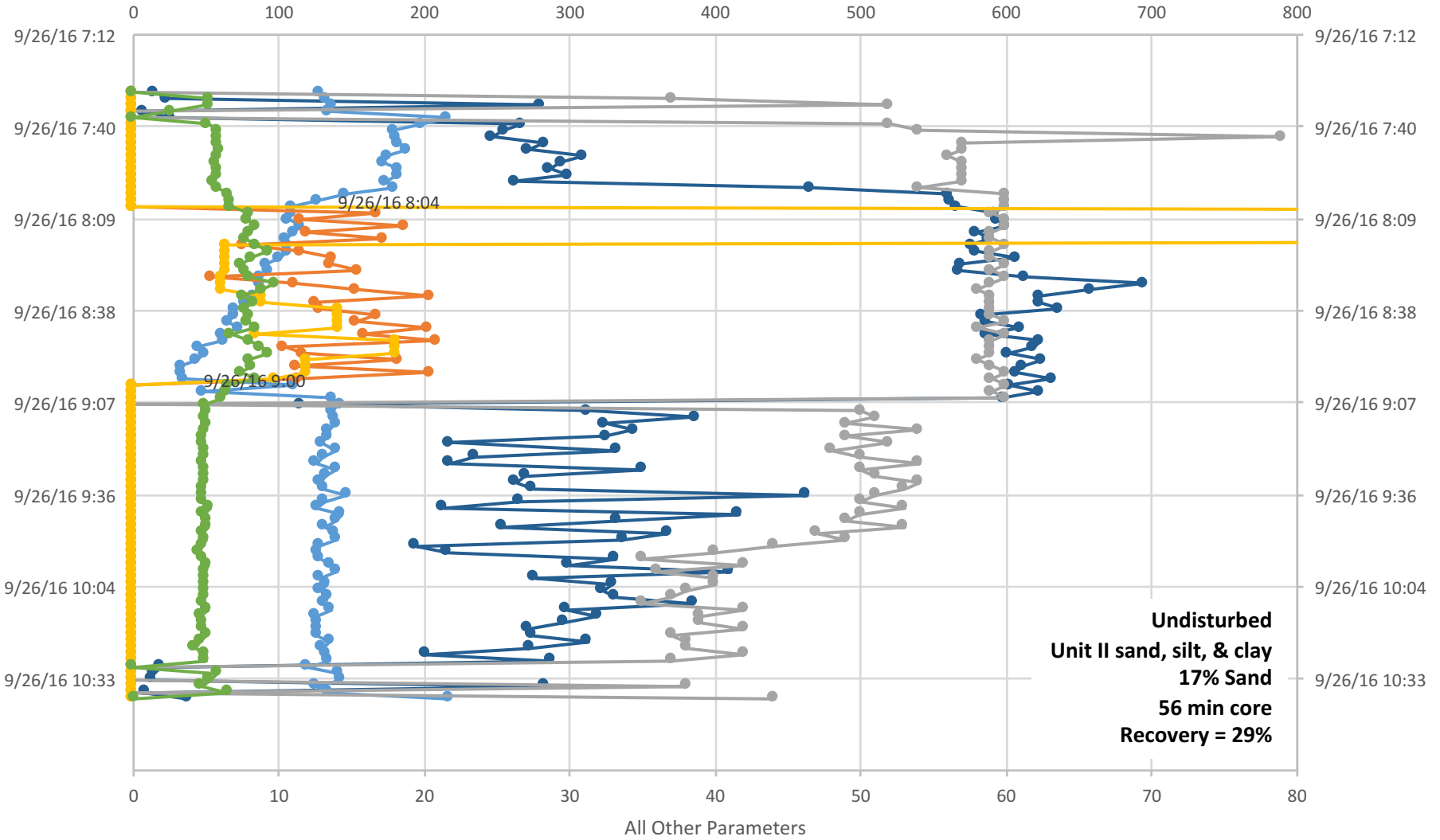
Standpipe Pressure (psi)



—●— Stand Pipe Pressure (psi) —●— Block Position —●— WOB klb (AD Hook Load) —●— MUD Pmps TOT (SPM) —●— ROP (m/hr) —●— TD Torque (k ft-lb)

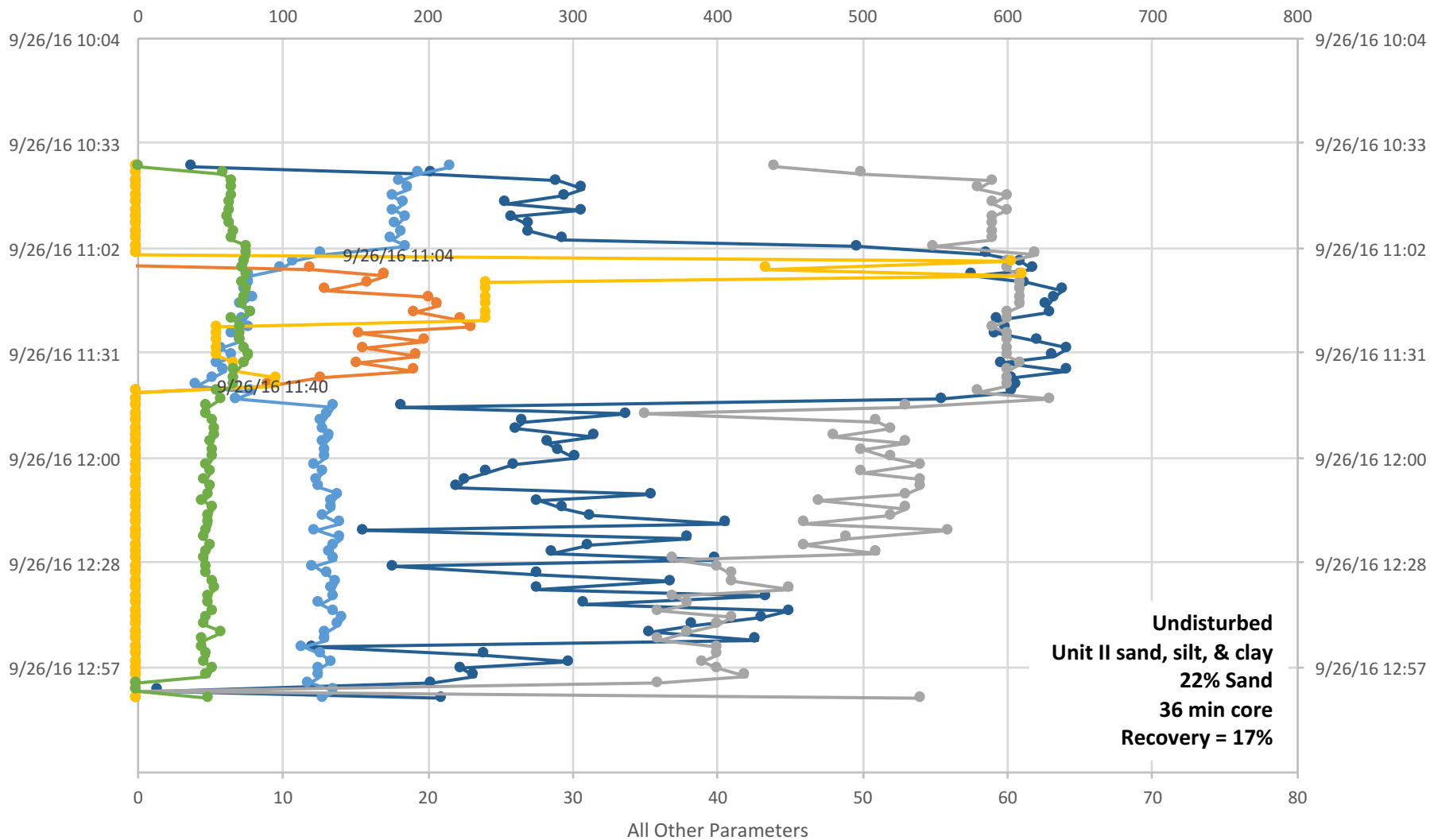
U1481A-11R

Standpipe Pressure (psi)



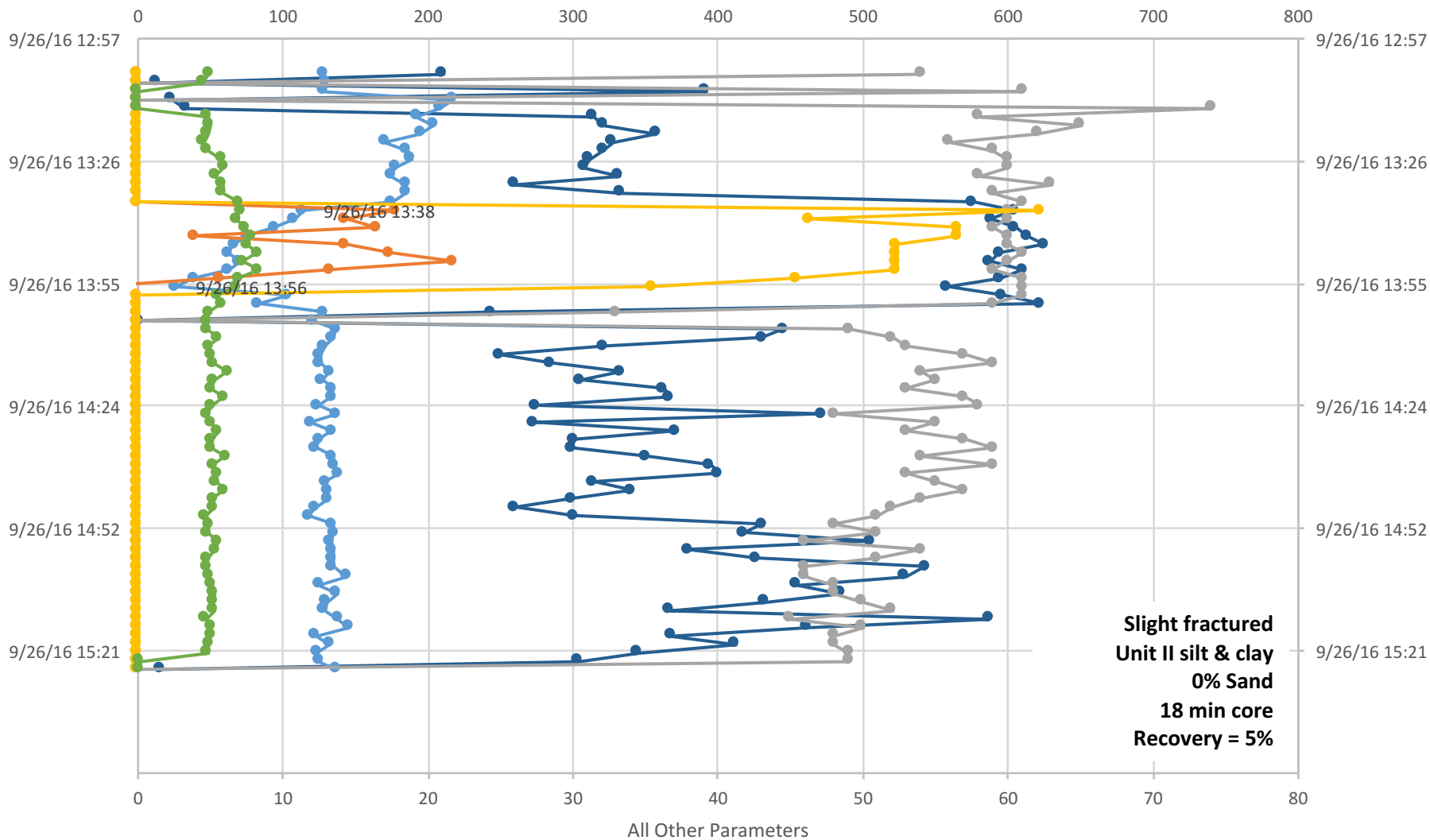
U1481A-12R

Standpipe Pressure (psi)



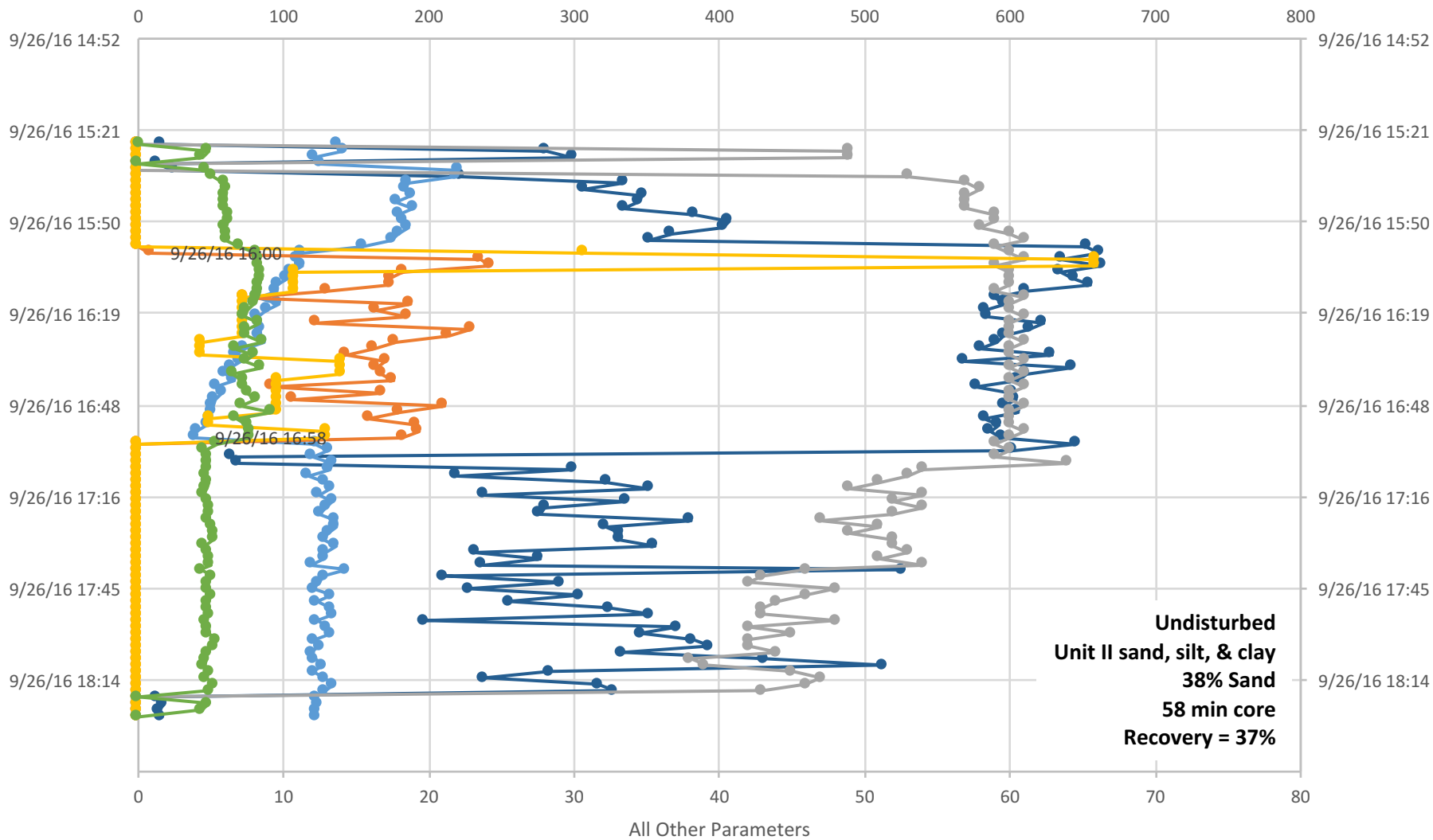
U1481A-13R

Standpipe Pressure (psi)



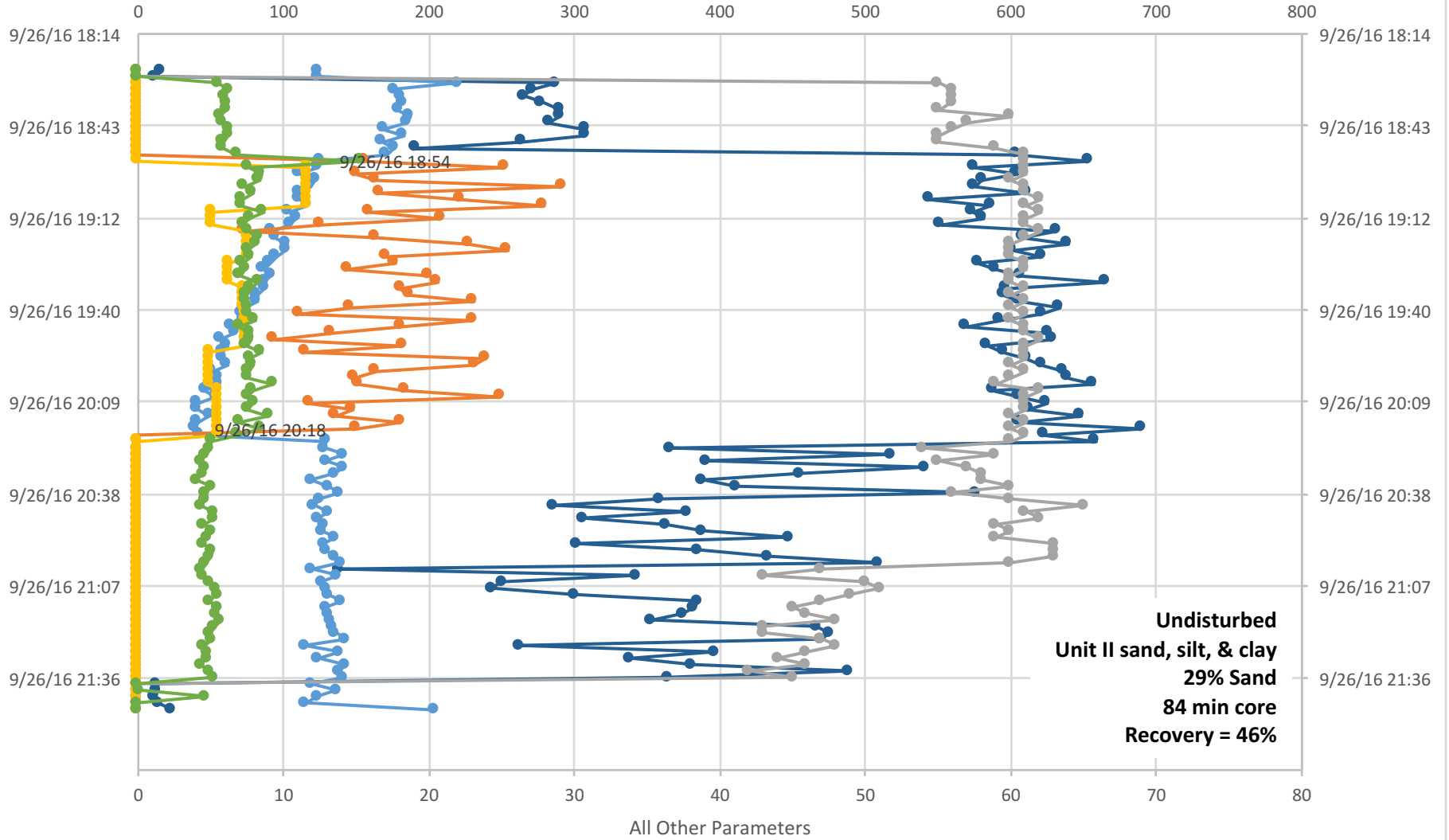
U1481A-14R

Standpipe Pressure (psi)



U1481A-15R

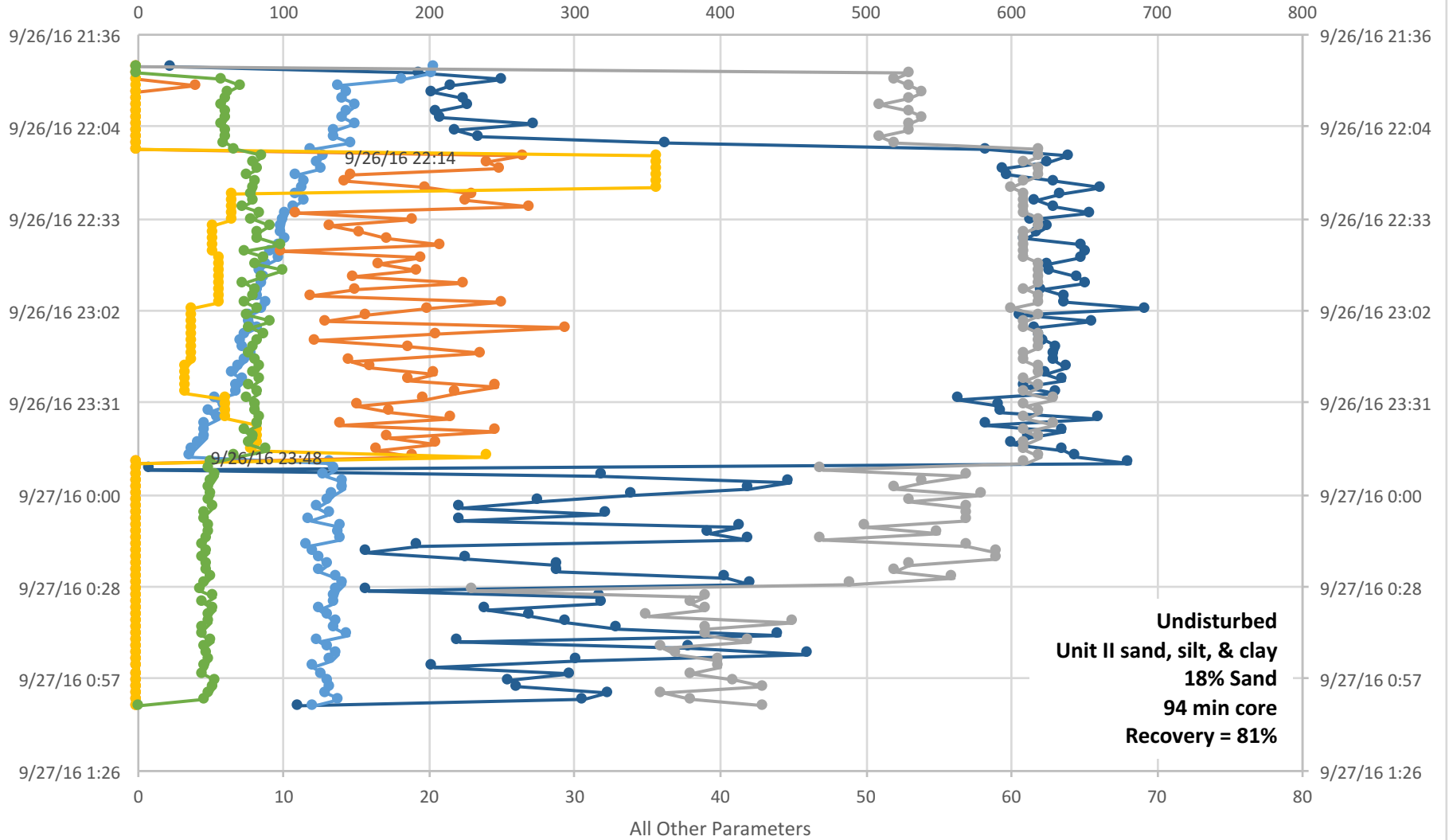
Standpipe Pressure (psi)



● Stand Pipe Pressure (psi) ● Block Position ● WOB klb (AD Hook Load) ● MUD Pmps TOT (SPM) ● ROP (m/hr) ● TD Torque (k ft-lb)

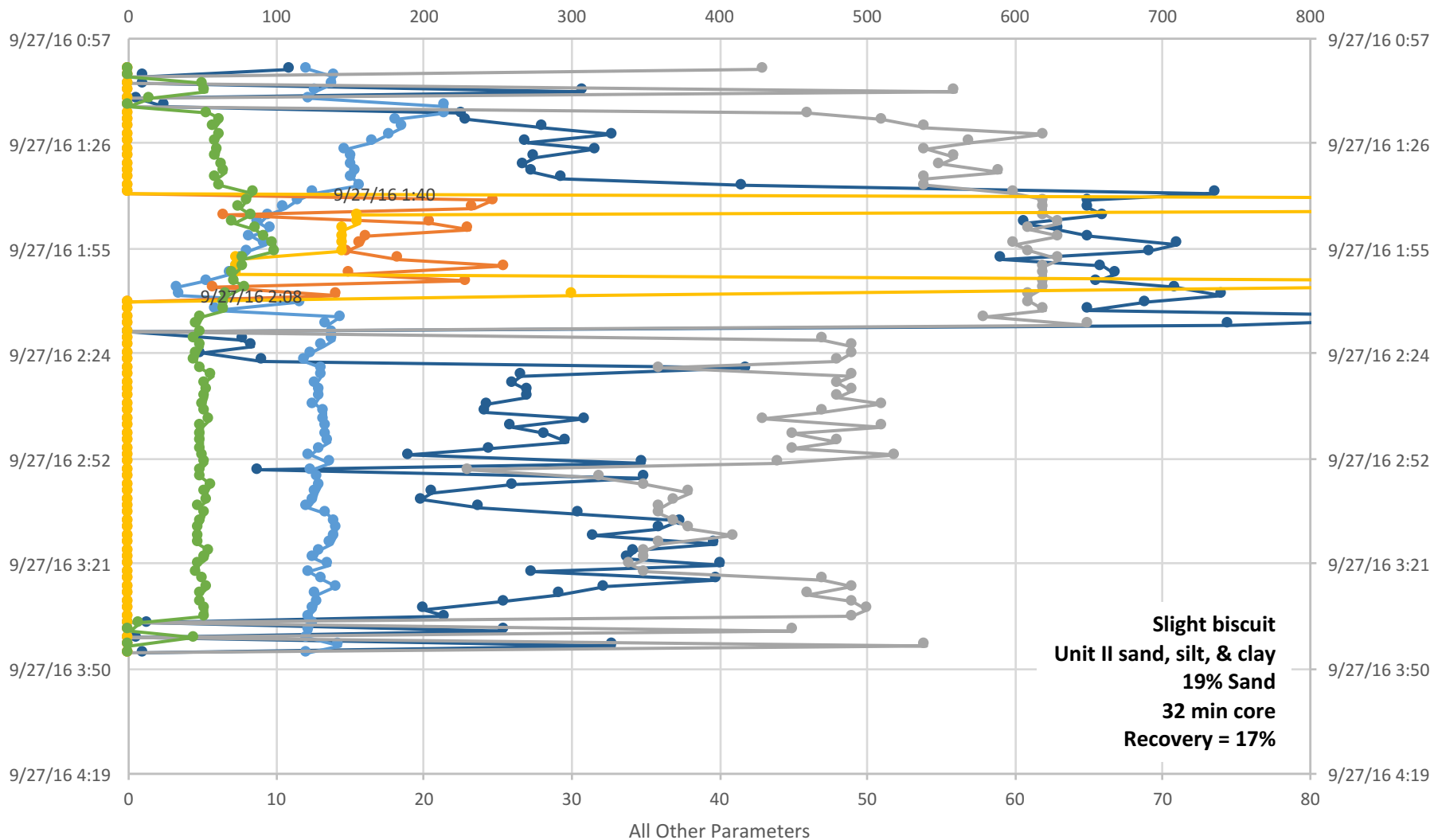
U1481A-16R

Standpipe Pressure (psi)



U1481A-17R

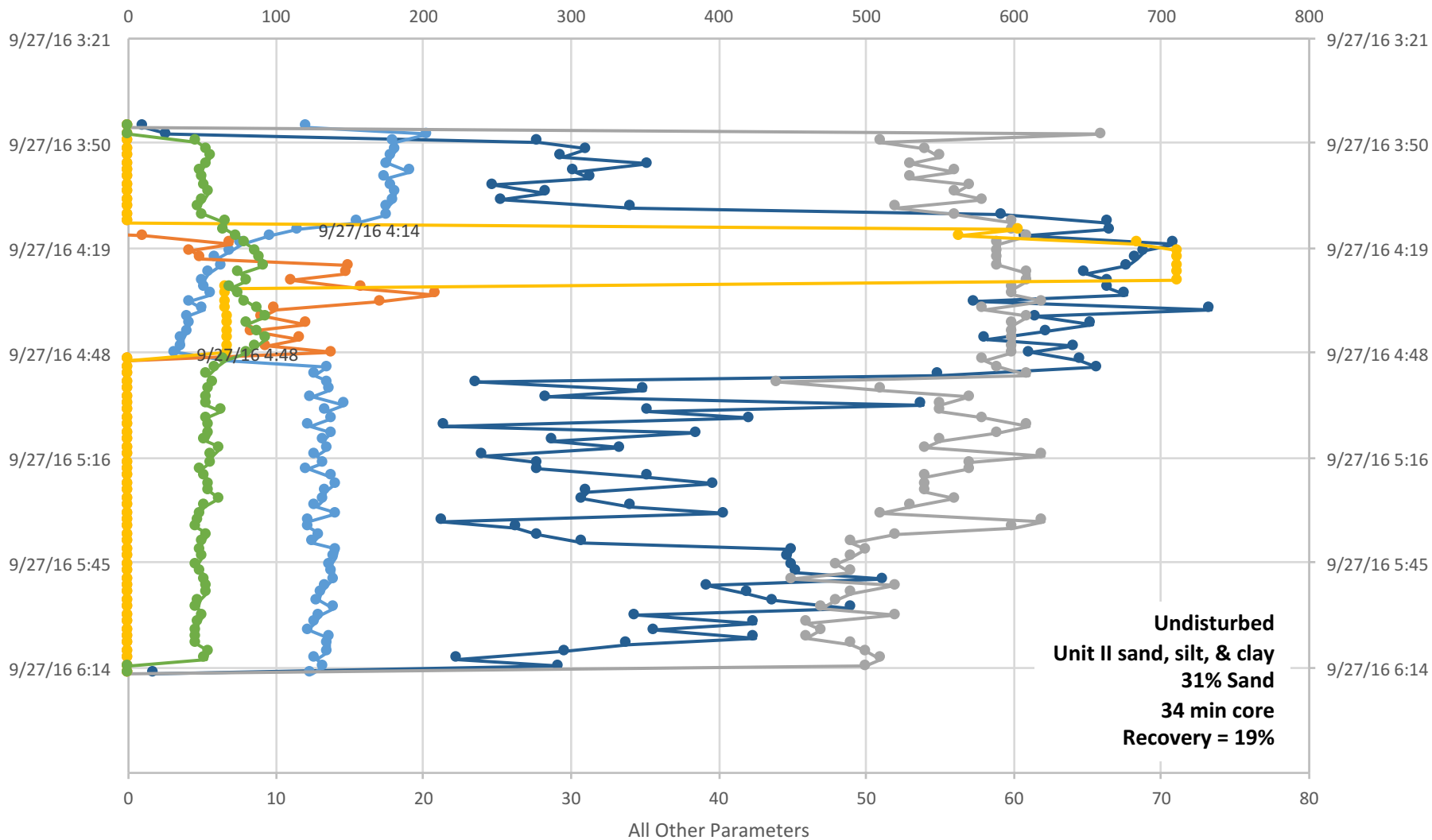
Standpipe Pressure (psi)



● Stand Pipe Pressure (psi) ● Block Position ● WOB klb (AD Hook Load) ● MUD Pmps TOT (SPM) ● ROP (m/hr) ● TD Torque (k ft-lb)

U1481A-18R

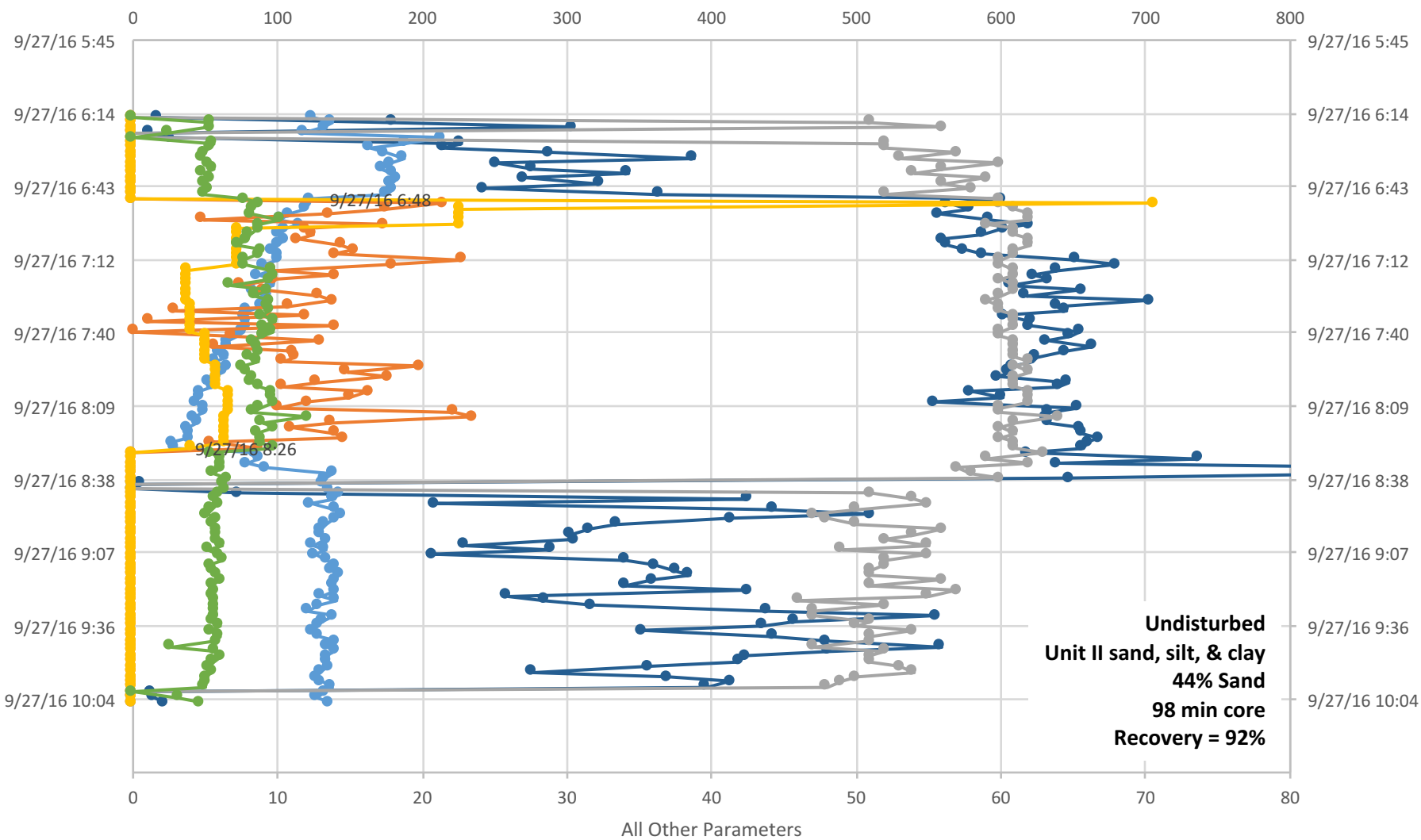
Standpipe Pressure (psi)



● Stand Pipe Pressure (psi) ● Block Position ● WOB klb (AD Hook Load) ● MUD Pmps TOT (SPM) ● ROP (m/hr) ● TD Torque (k ft-lb)

U1481A-19R

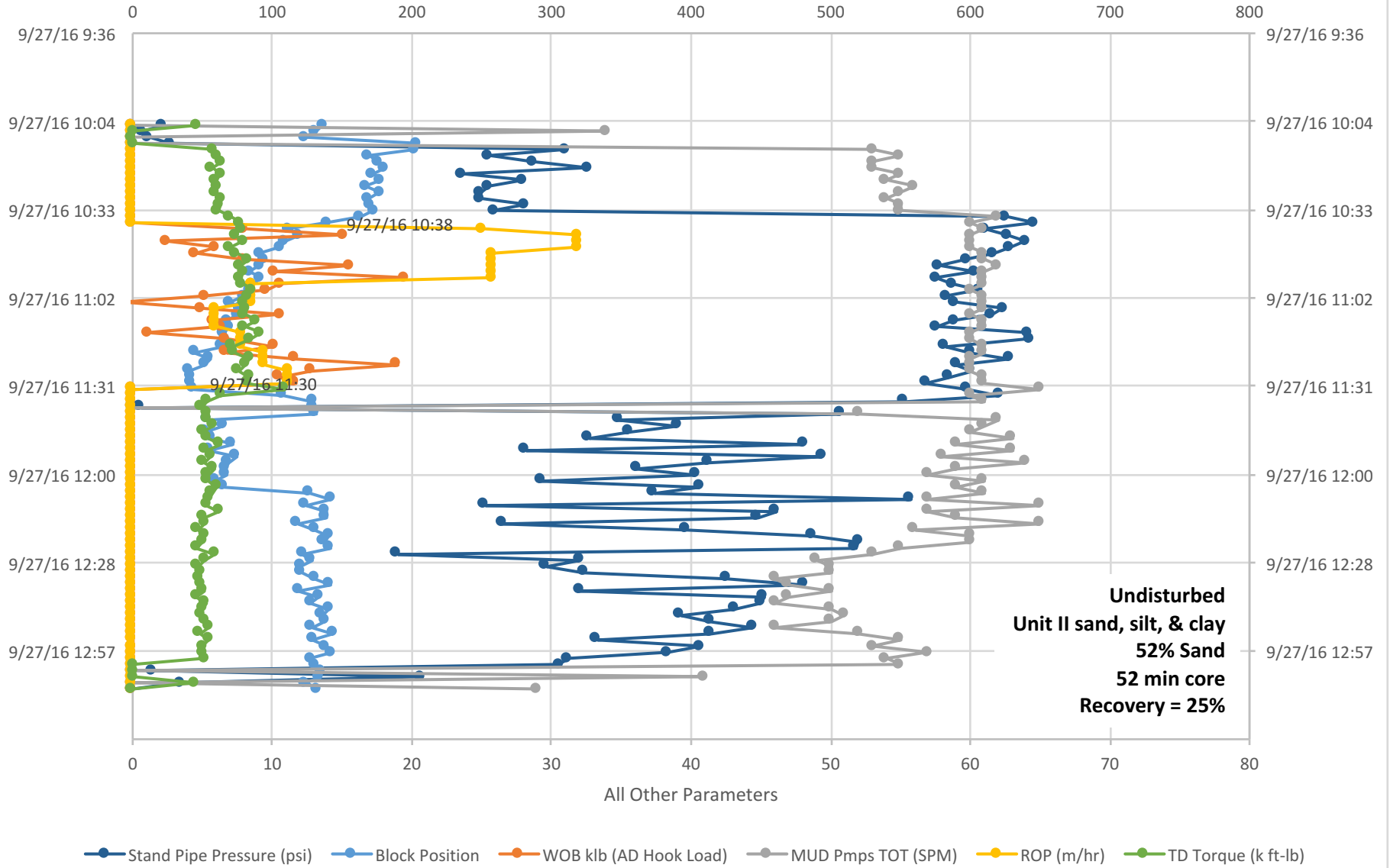
Standpipe Pressure (psi)



—●— Stand Pipe Pressure (psi) —●— Block Position —●— WOB klb (AD Hook Load) —●— MUD Pmps TOT (SPM) —●— ROP (m/hr) —●— TD Torque (k ft-lb)

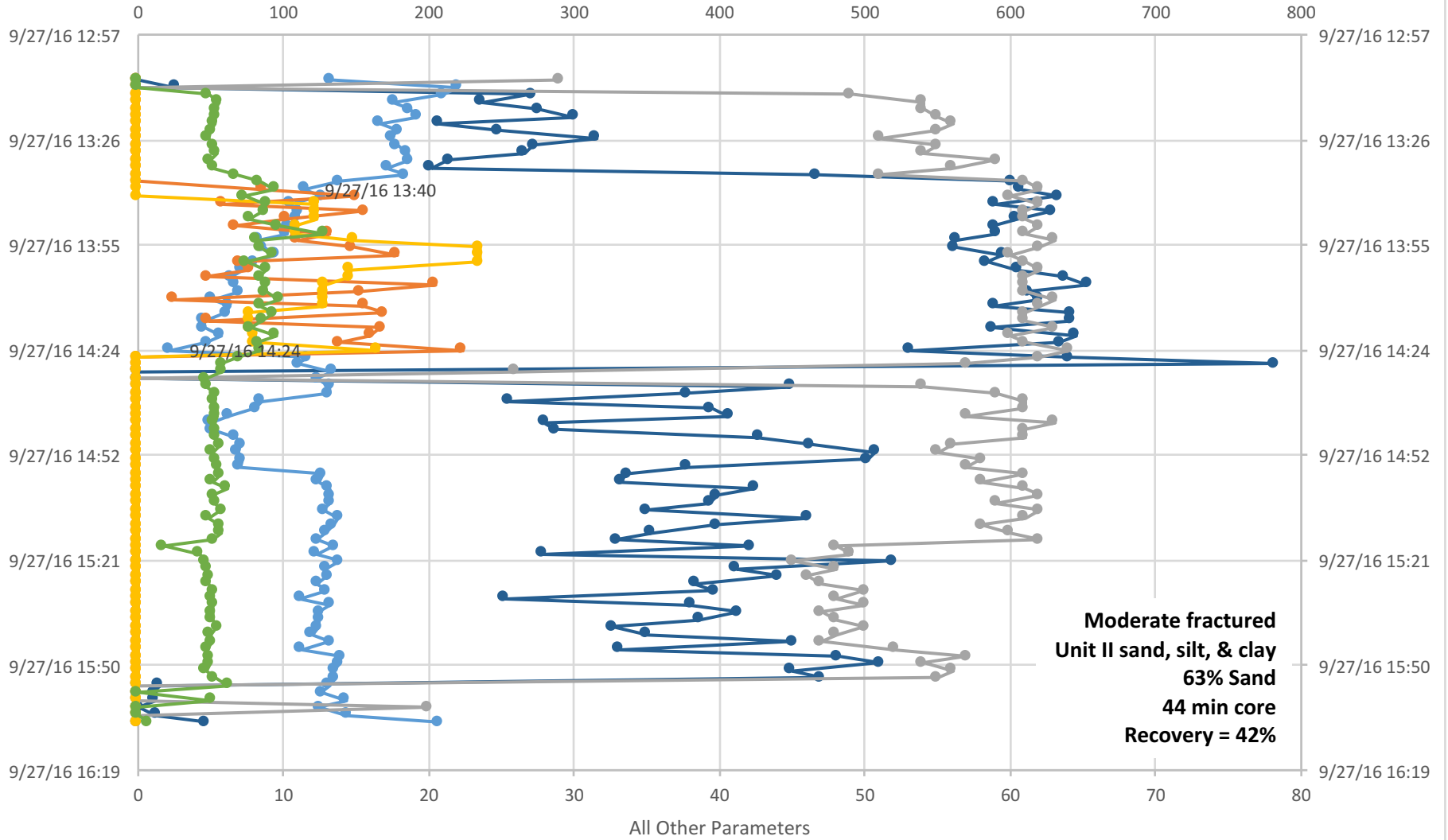
U1481A-20R

Standpipe Pressure (psi)



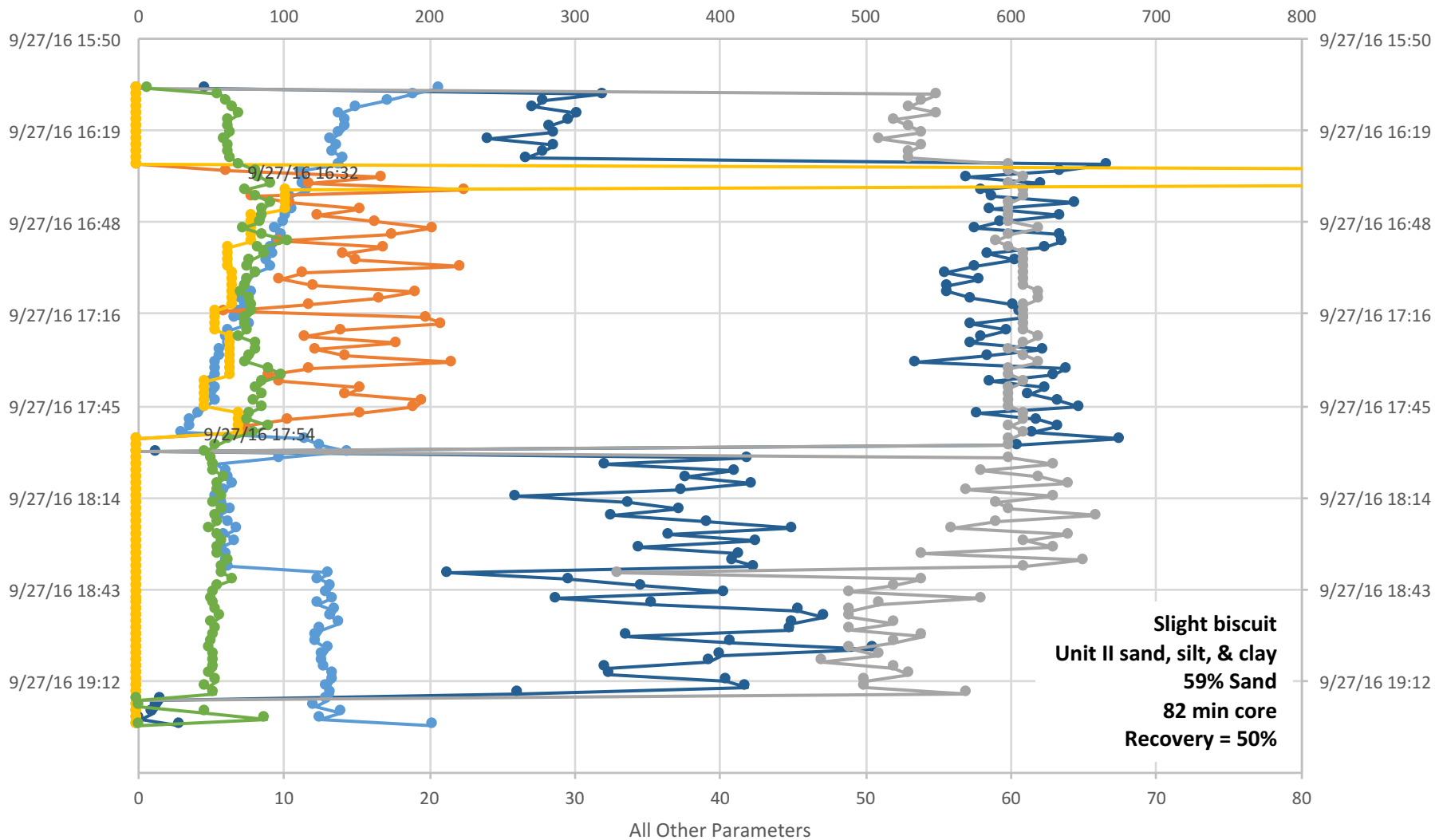
U1481A-21R

Standpipe Pressure (psi)



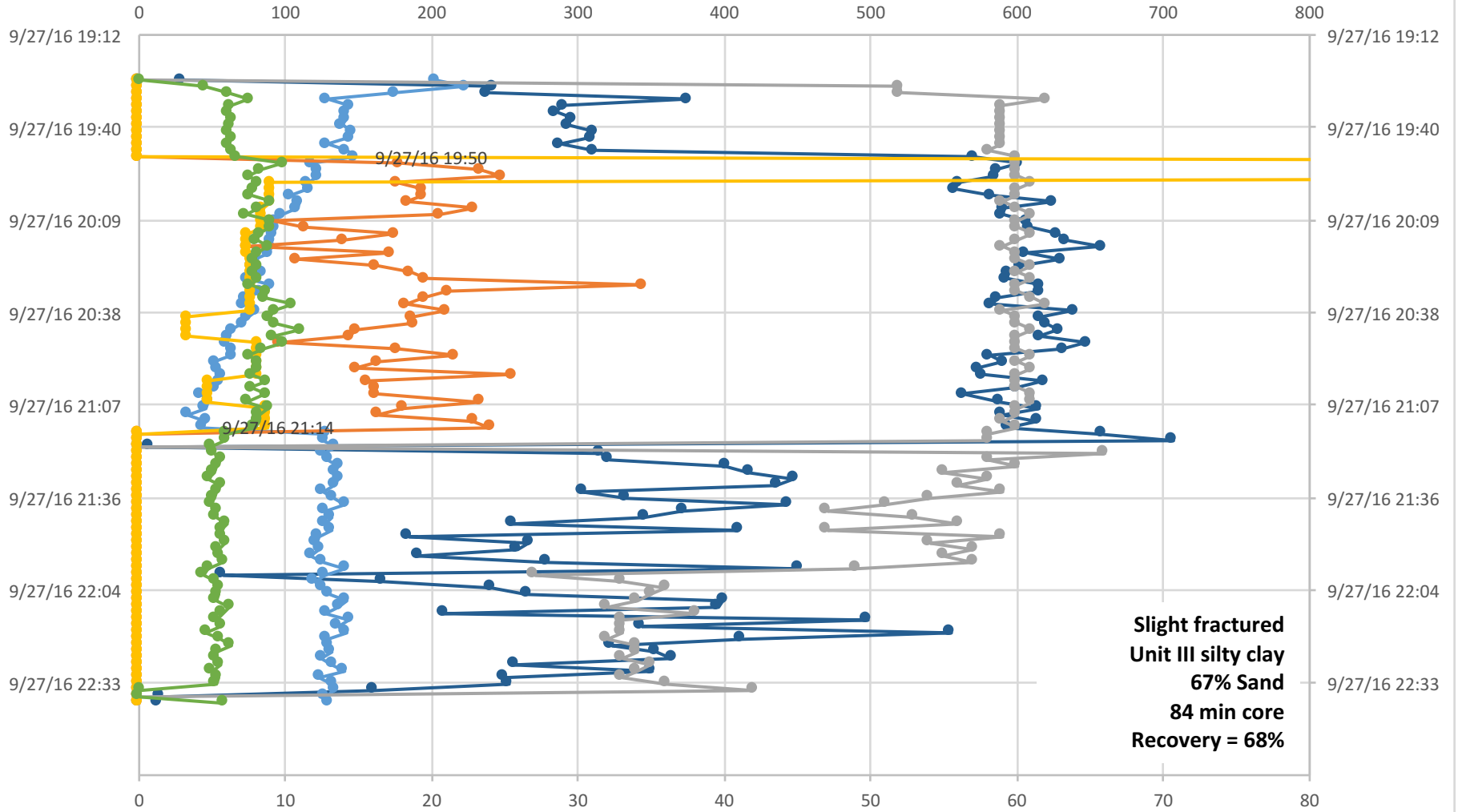
U1481A-22R

Standpipe Pressure (psi)



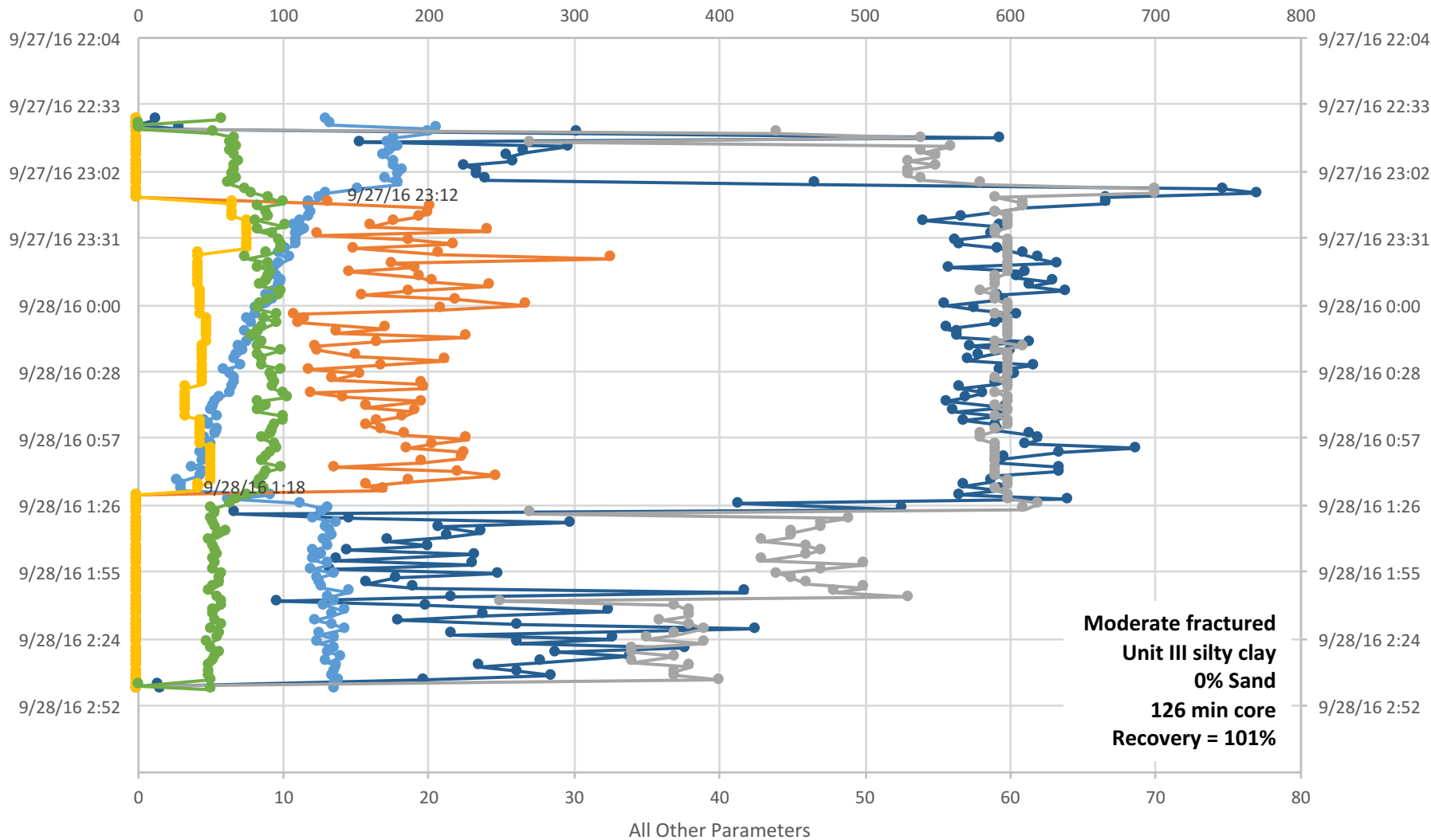
U1481A-23R

Standpipe Pressure (psi)



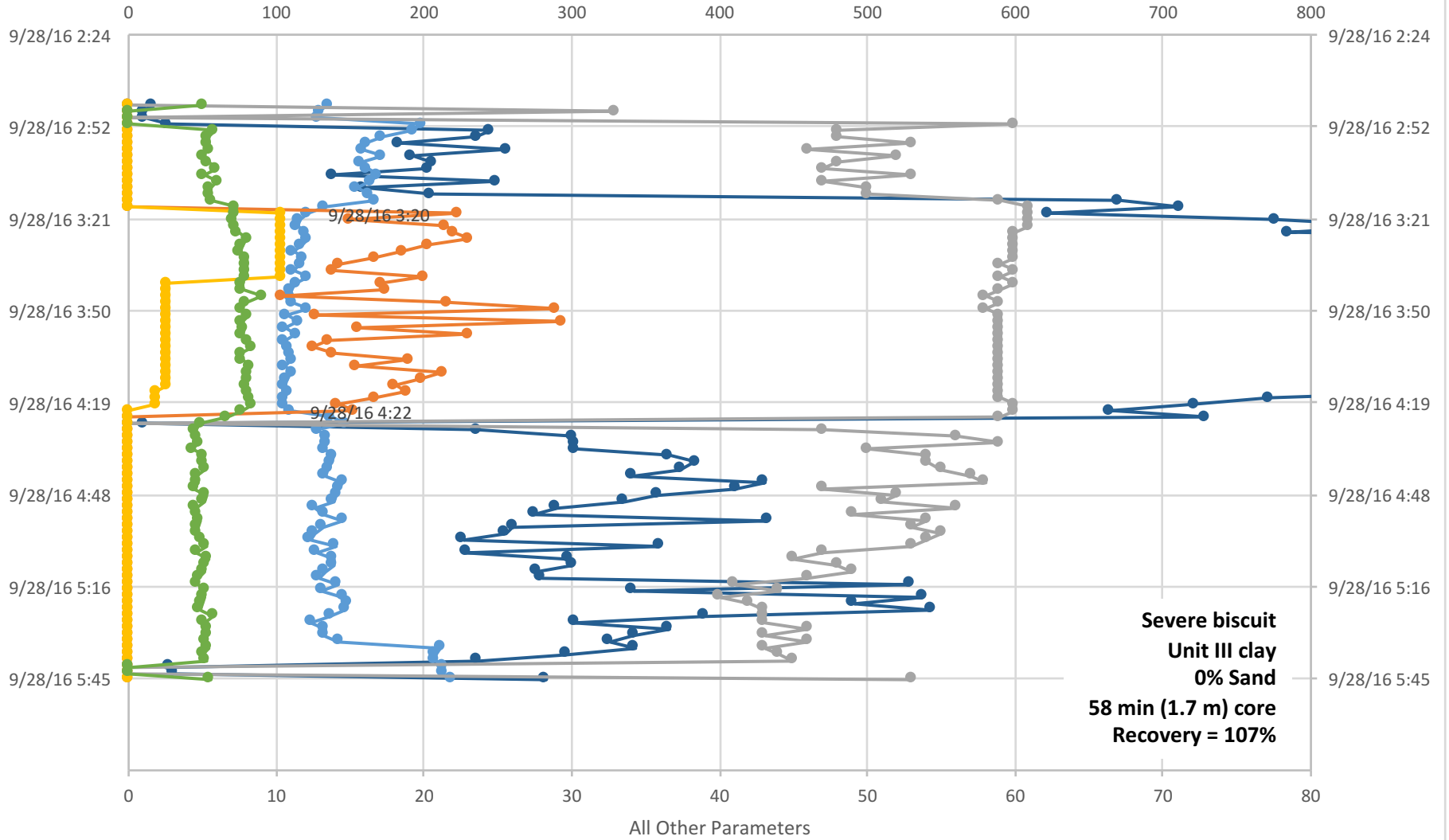
U1481A-24R

Standpipe Pressure (psi)



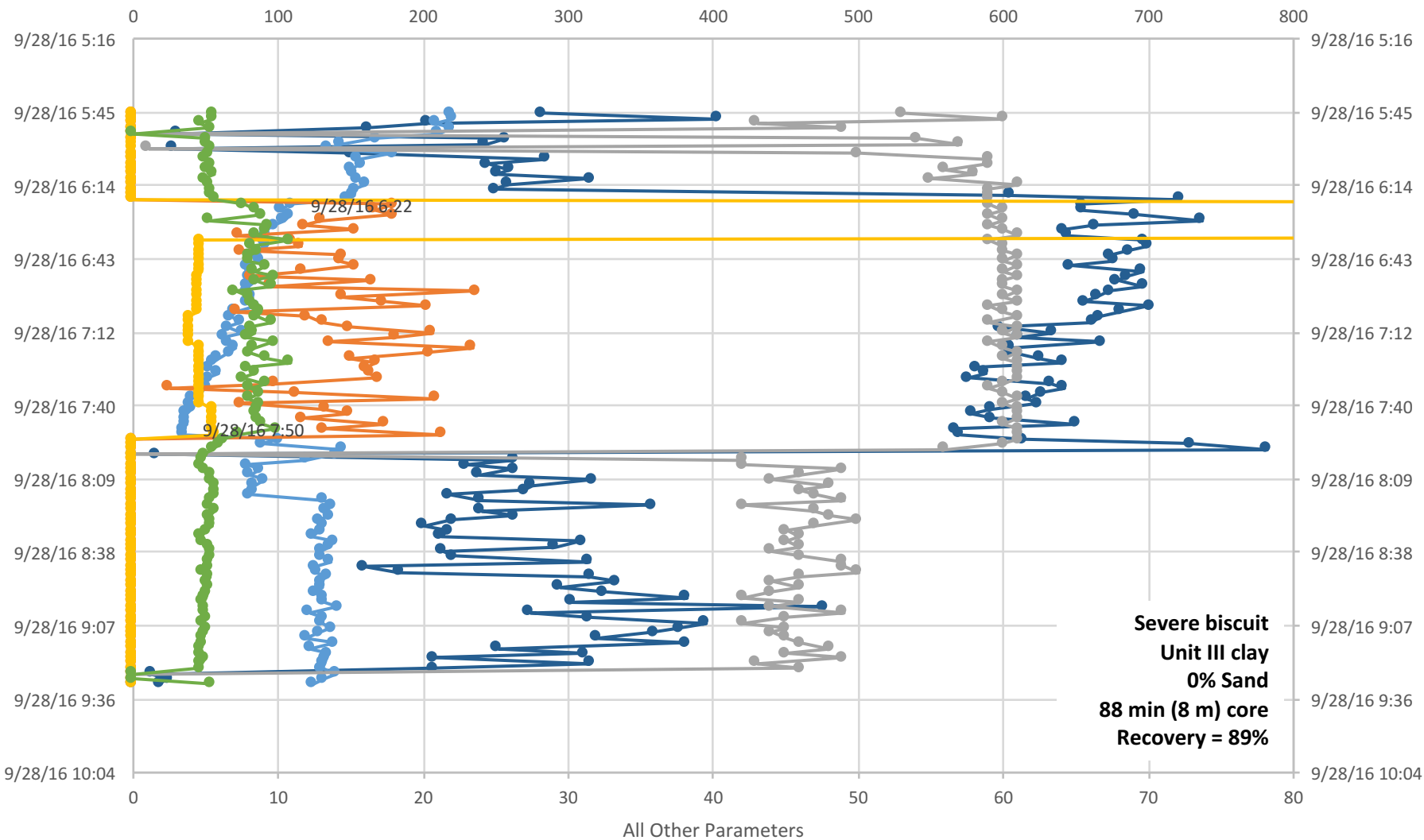
U1481A-25R

Standpipe Pressure (psi)



U1481A-26R

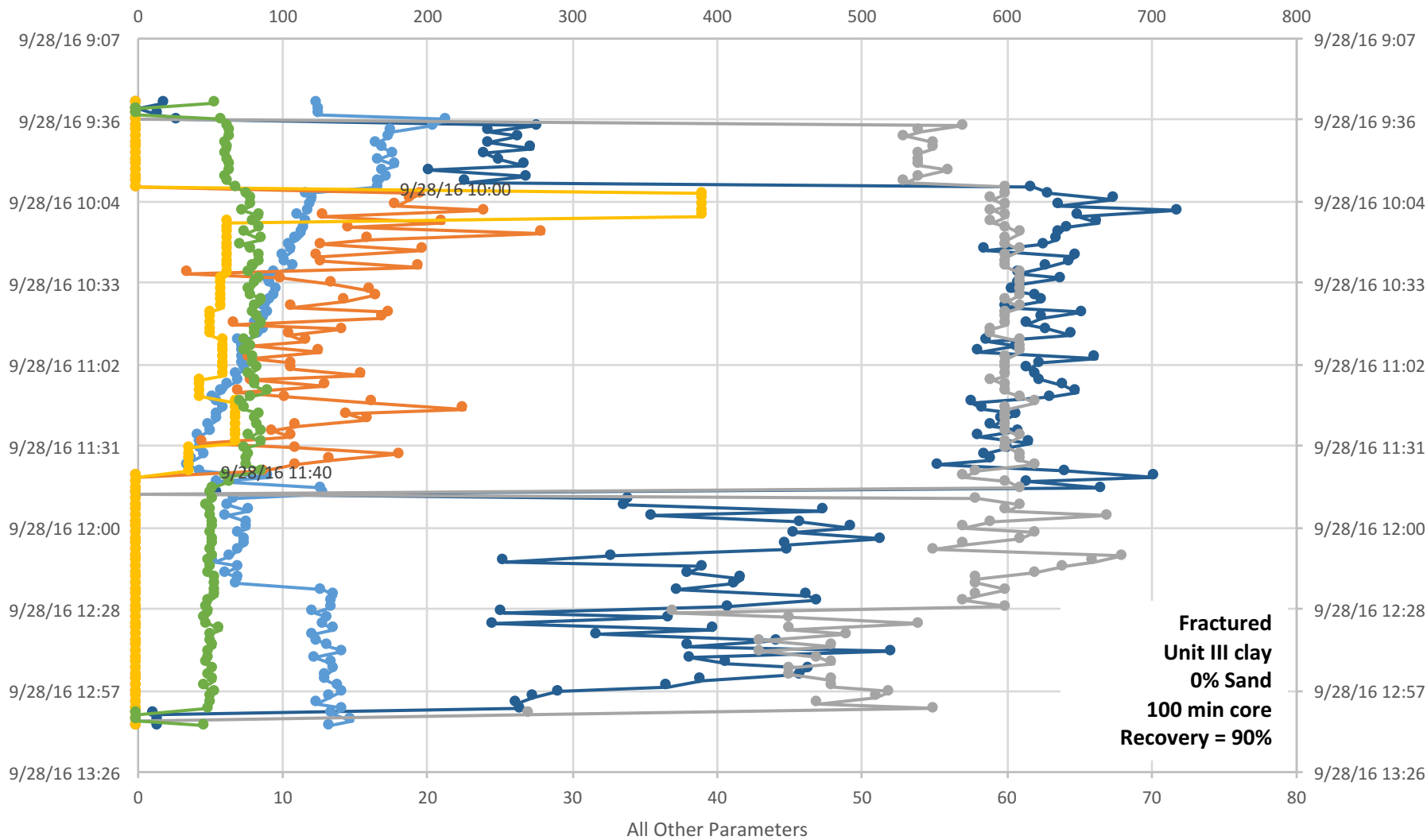
Standpipe Pressure (psi)



● Stand Pipe Pressure (psi) ● Block Position ● WOB klb (AD Hook Load) ● MUD Pmps TOT (SPM) ● ROP (m/hr) ● TD Torque (k ft-lb)

U1481A-27R

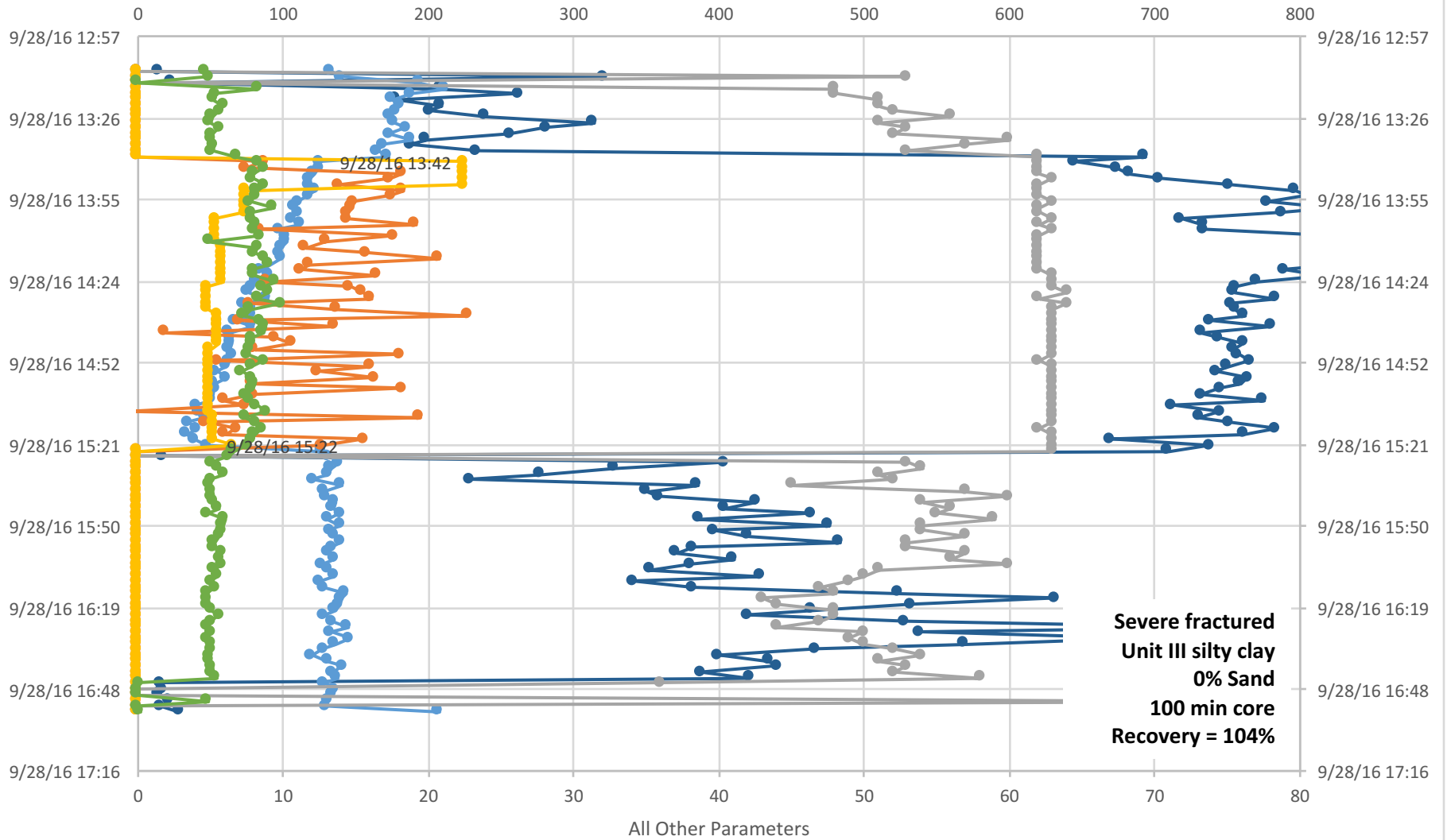
Standpipe Pressure (psi)



● Stand Pipe Pressure (psi) ● Block Position ● WOB klb (AD Hook Load) ● MUD Pmps TOT (SPM) ● ROP (m/hr) ● TD Torque (k ft-lb)

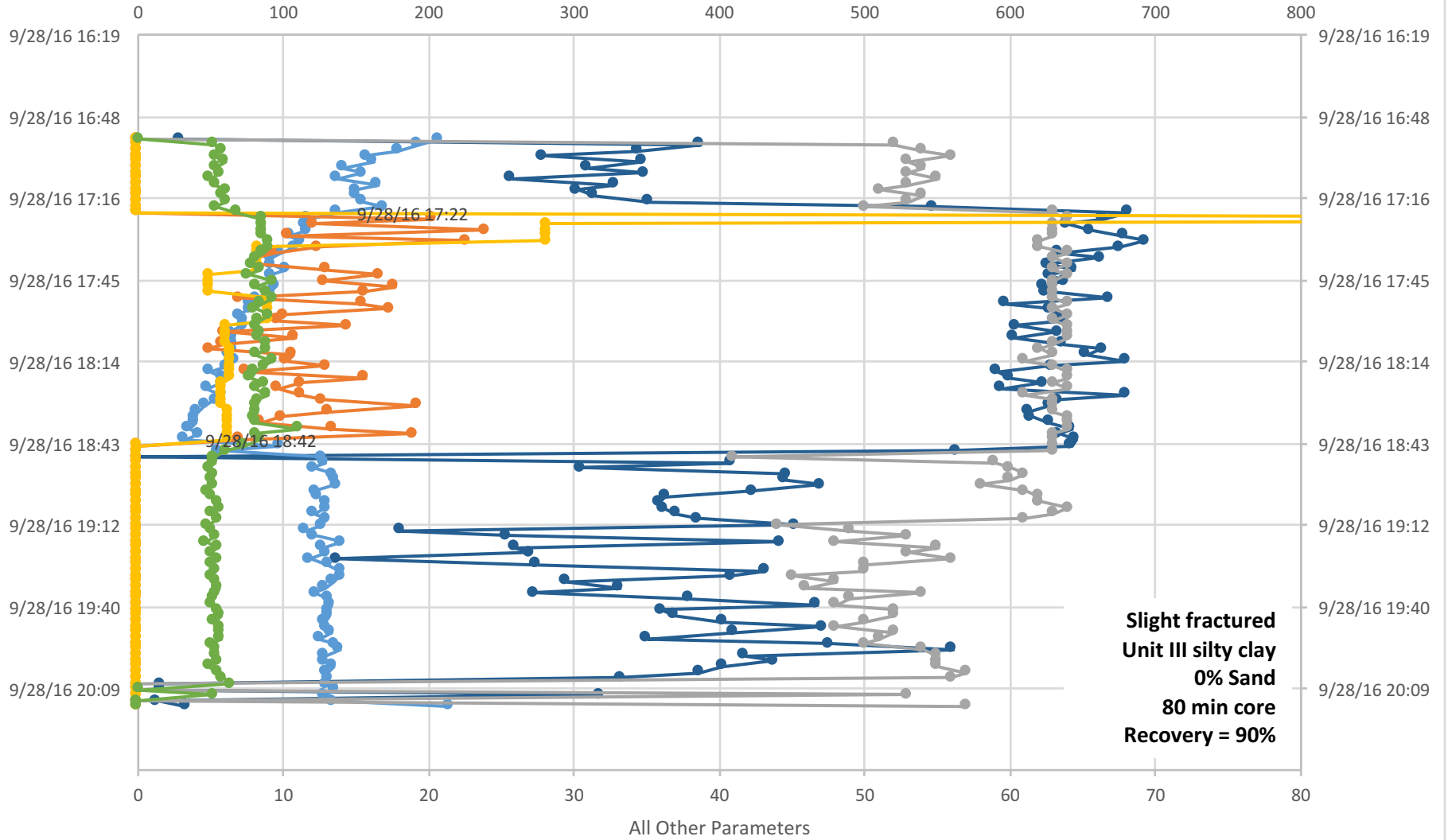
U1481A-28R

Standpipe Pressure (psi)



U1481A-29R

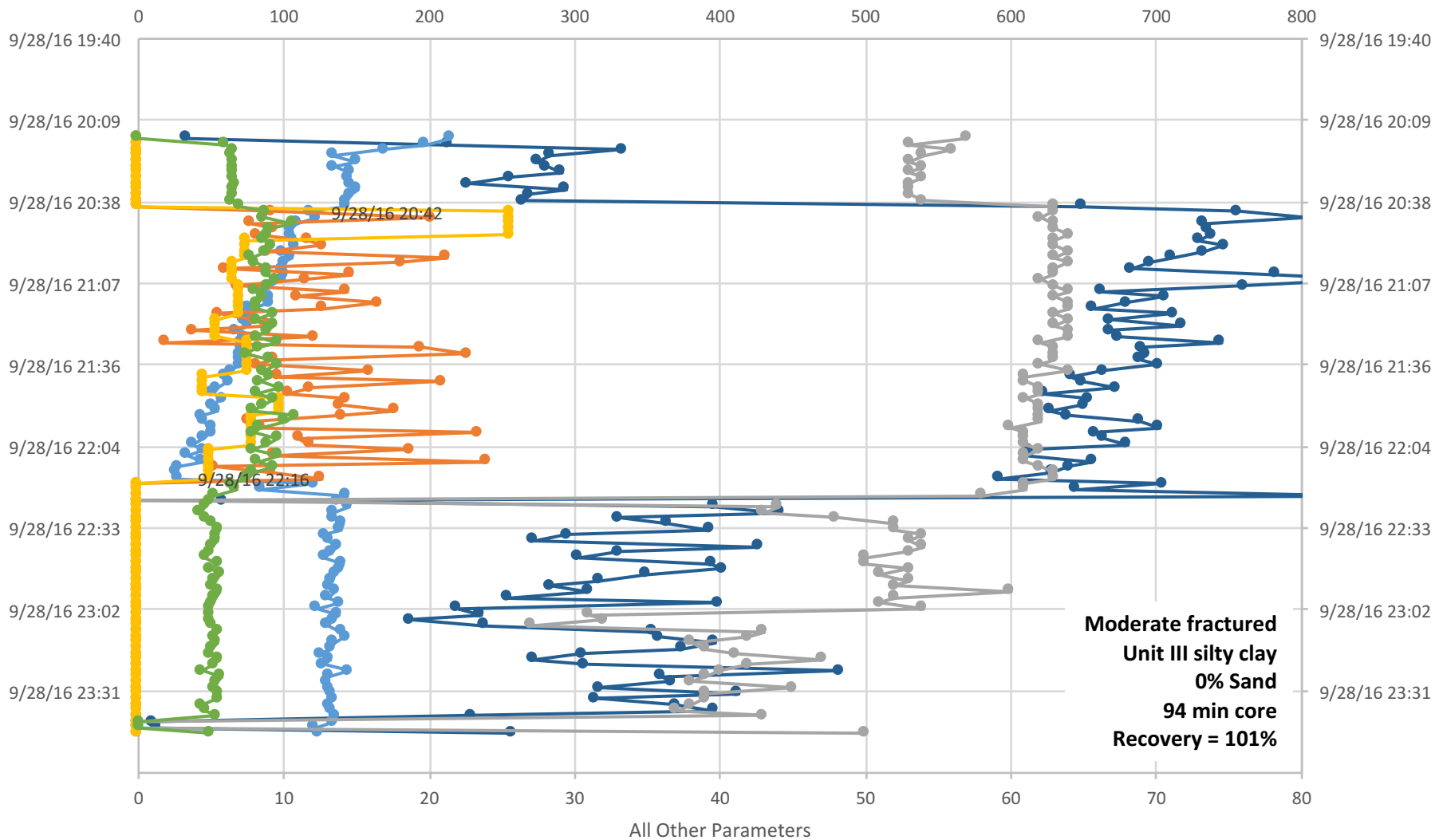
Standpipe Pressure (psi)



● Stand Pipe Pressure (psi) ● Block Position ● WOB klb (AD Hook Load) ● MUD Pmps TOT (SPM) ● ROP (m/hr) ● TD Torque (k ft-lb)

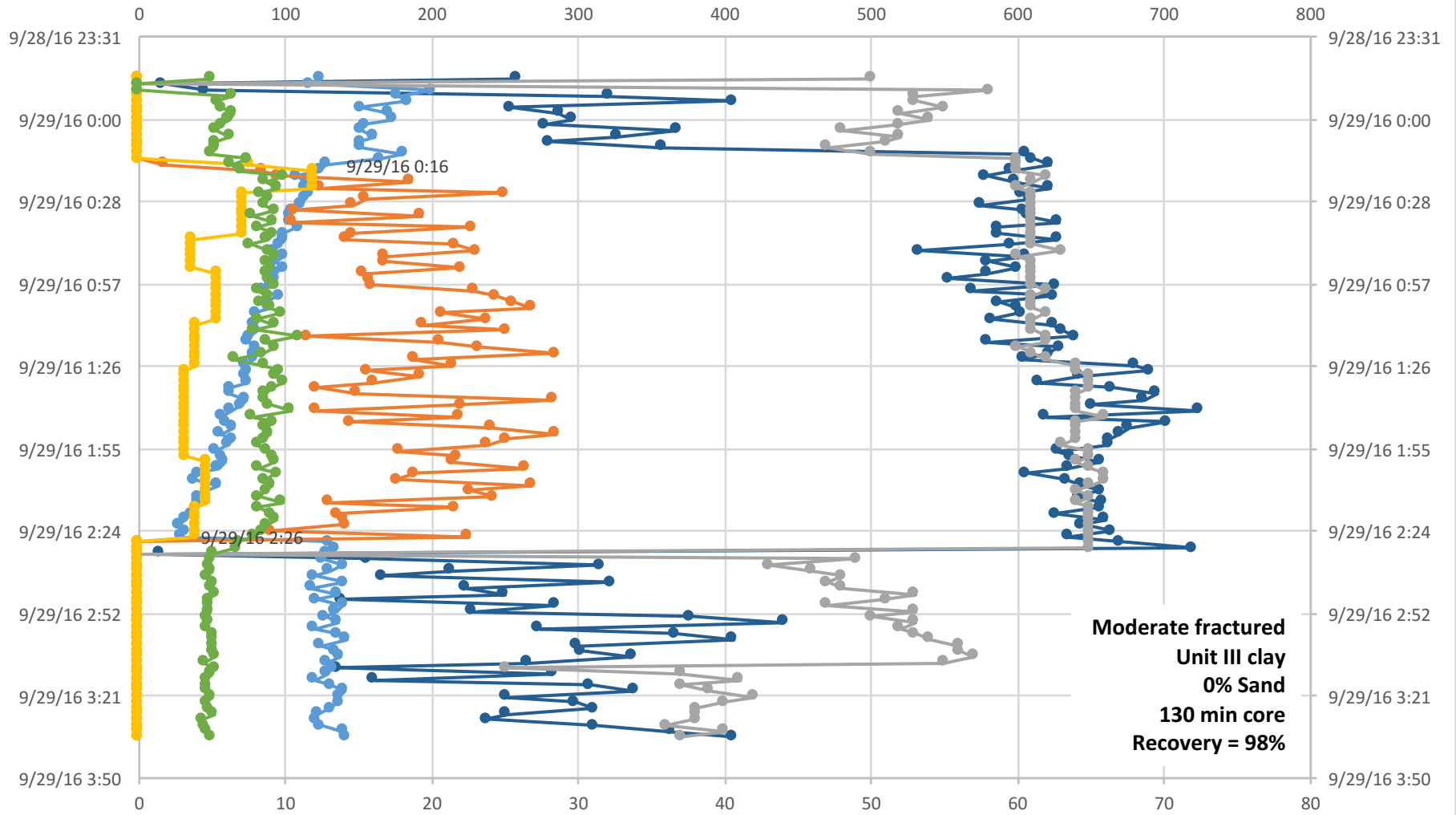
U1481A-30R

Standpipe Pressure (psi)



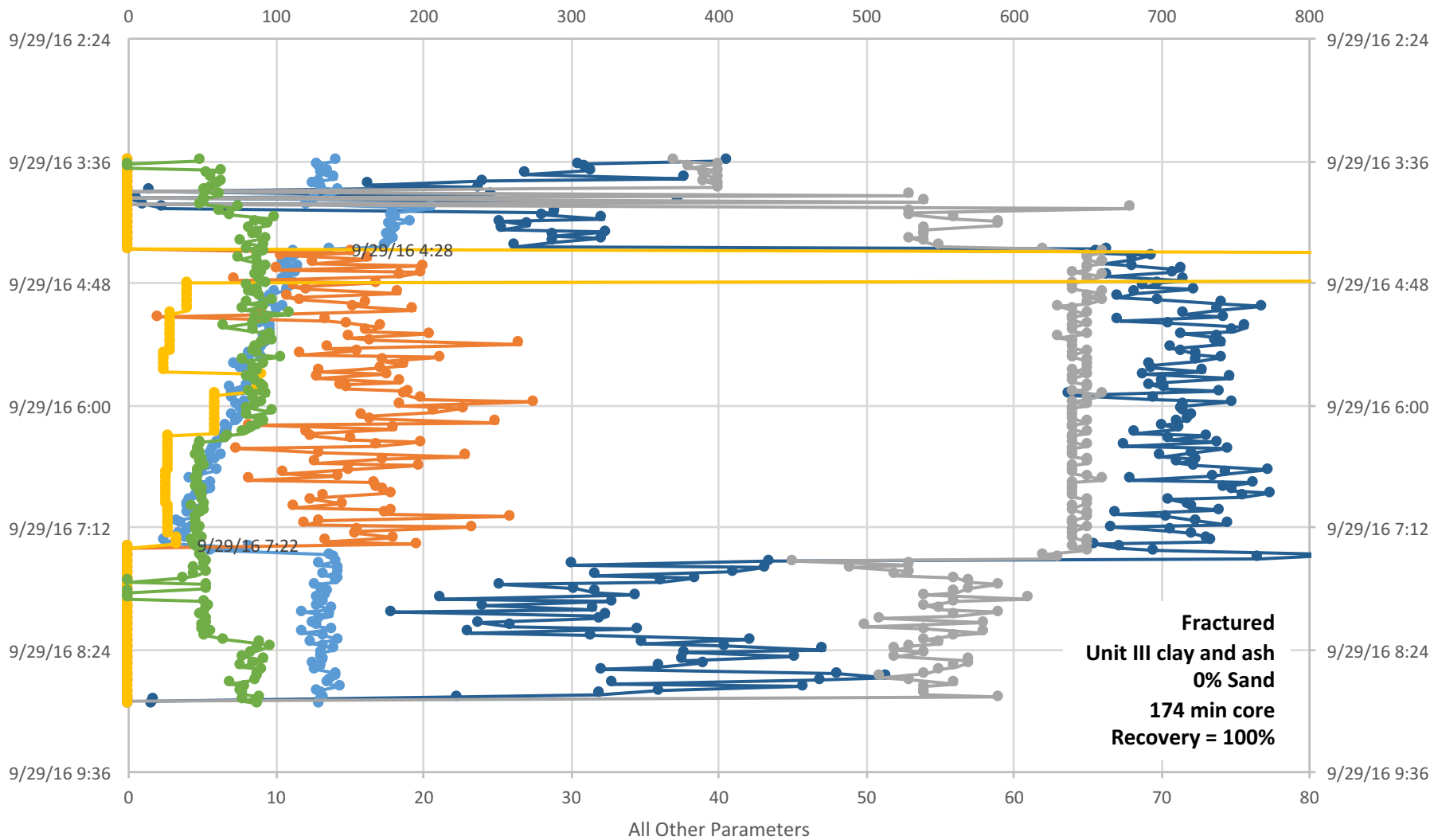
U1481A-31R

Standpipe Pressure (psi)



U1481A-32R

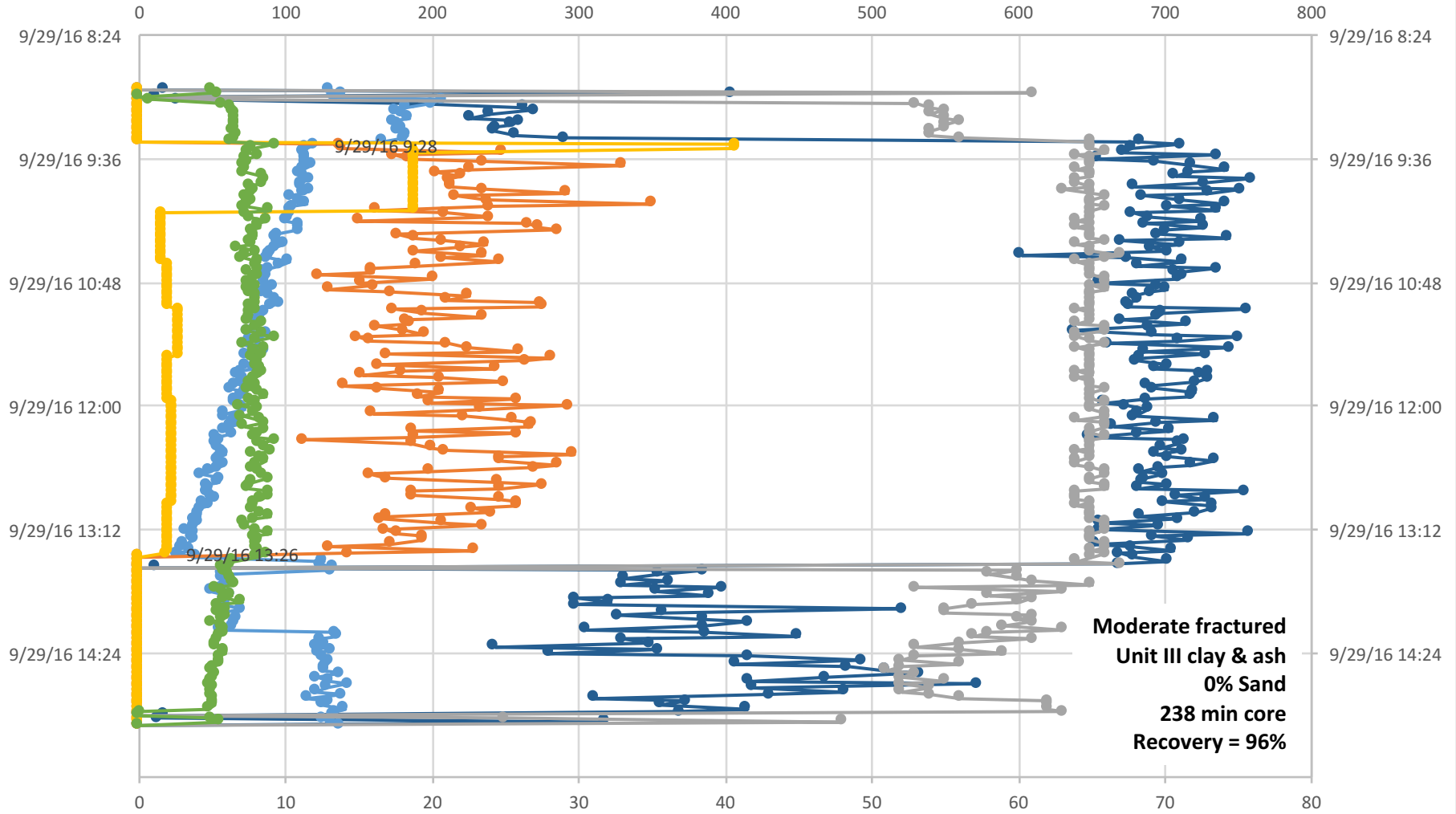
Standpipe Pressure (psi)



● Stand Pipe Pressure (psi) ● Block Position ● WOB klb (AD Hook Load) ● MUD Pmps TOT (SPM) ● ROP (m/hr) ● TD Torque (k ft-lb)

U1481A-33R

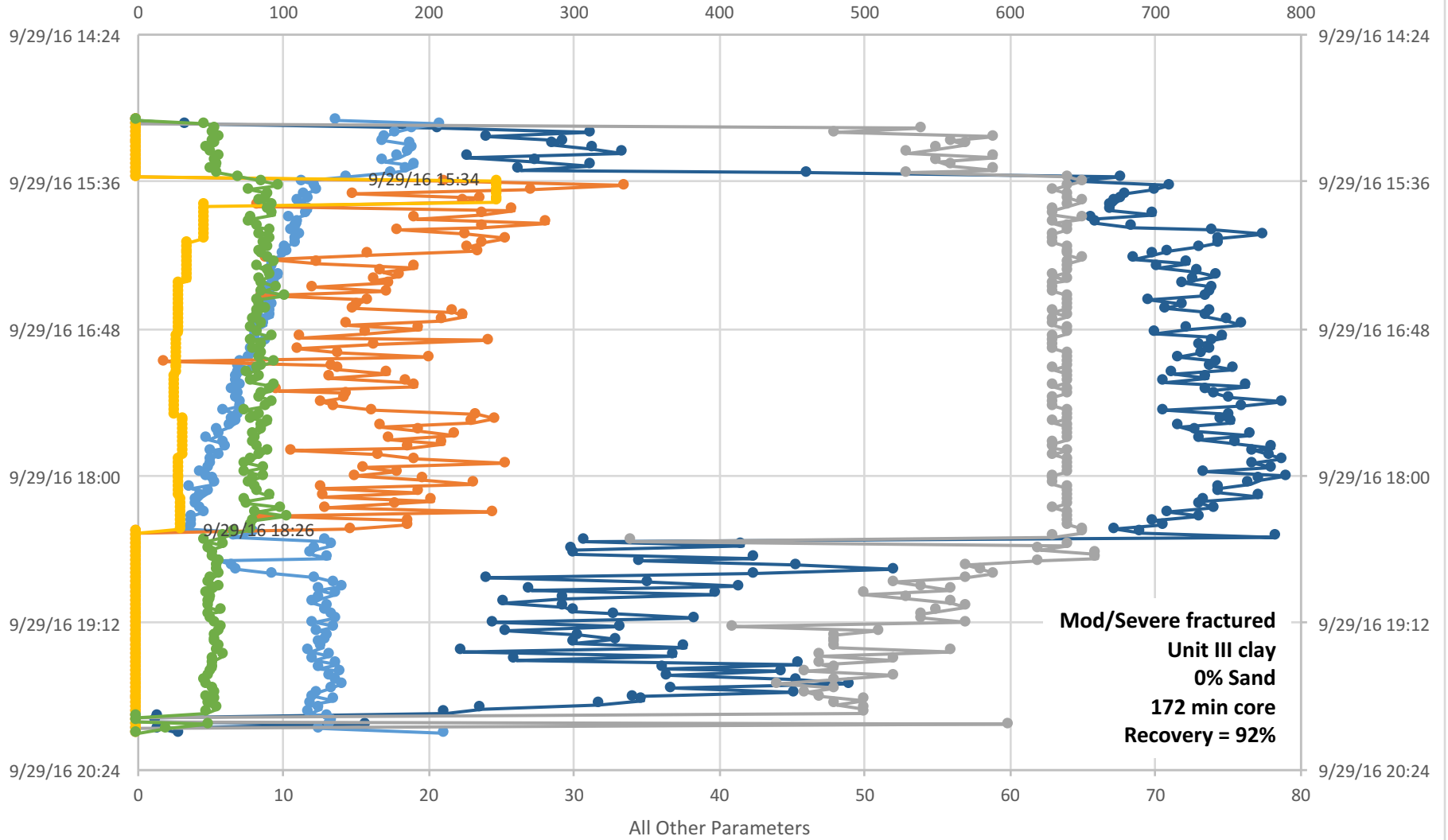
Standpipe Pressure (psi)



—●— Stand Pipe Pressure (psi) —●— Block Position —●— WOB klb (AD Hook Load) —●— MUD Pmps TOT (SPM) —●— ROP (m/hr) —●— TD Torque (k ft-lb)

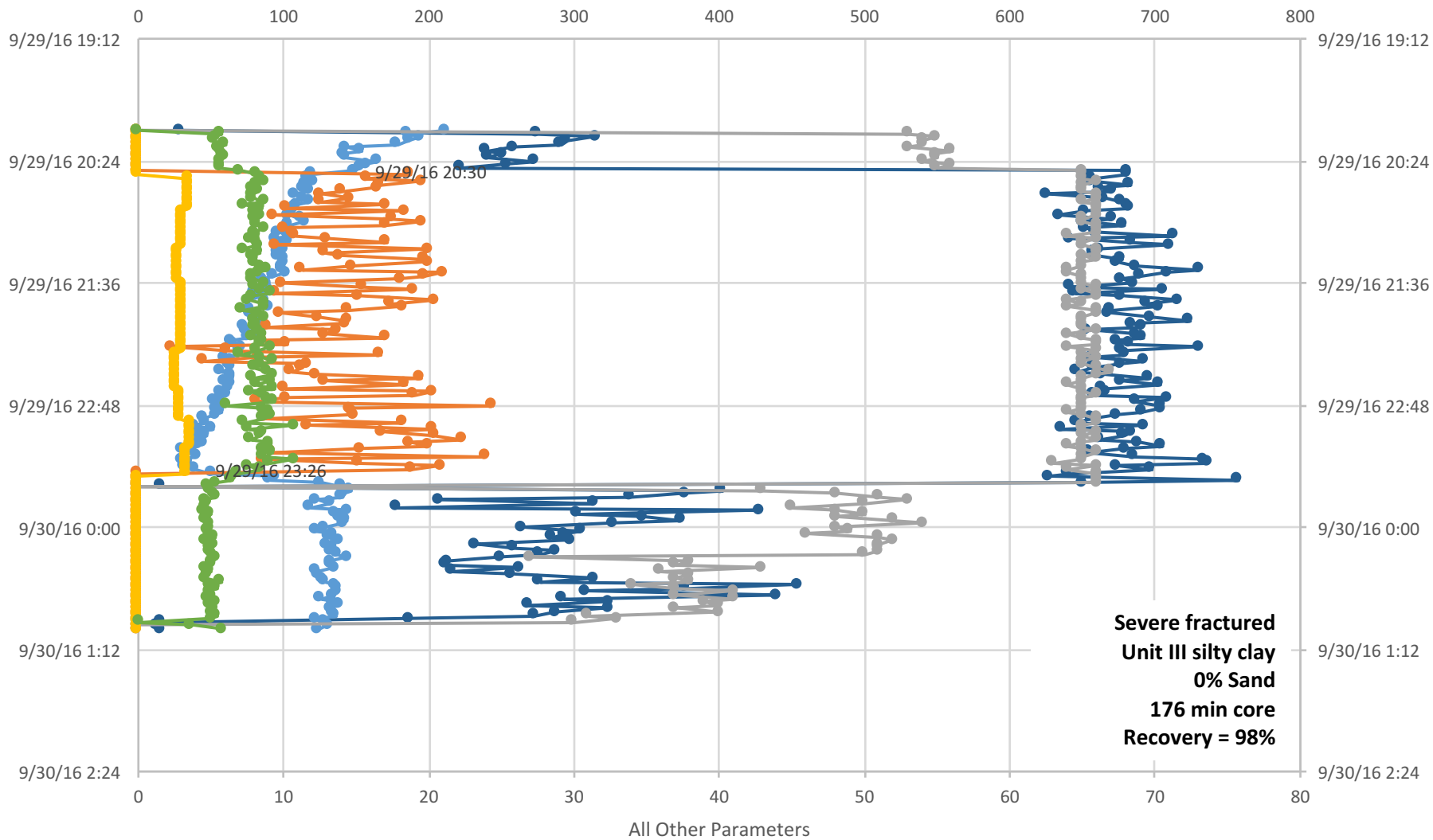
U1481A-34R

Standpipe Pressure (psi)



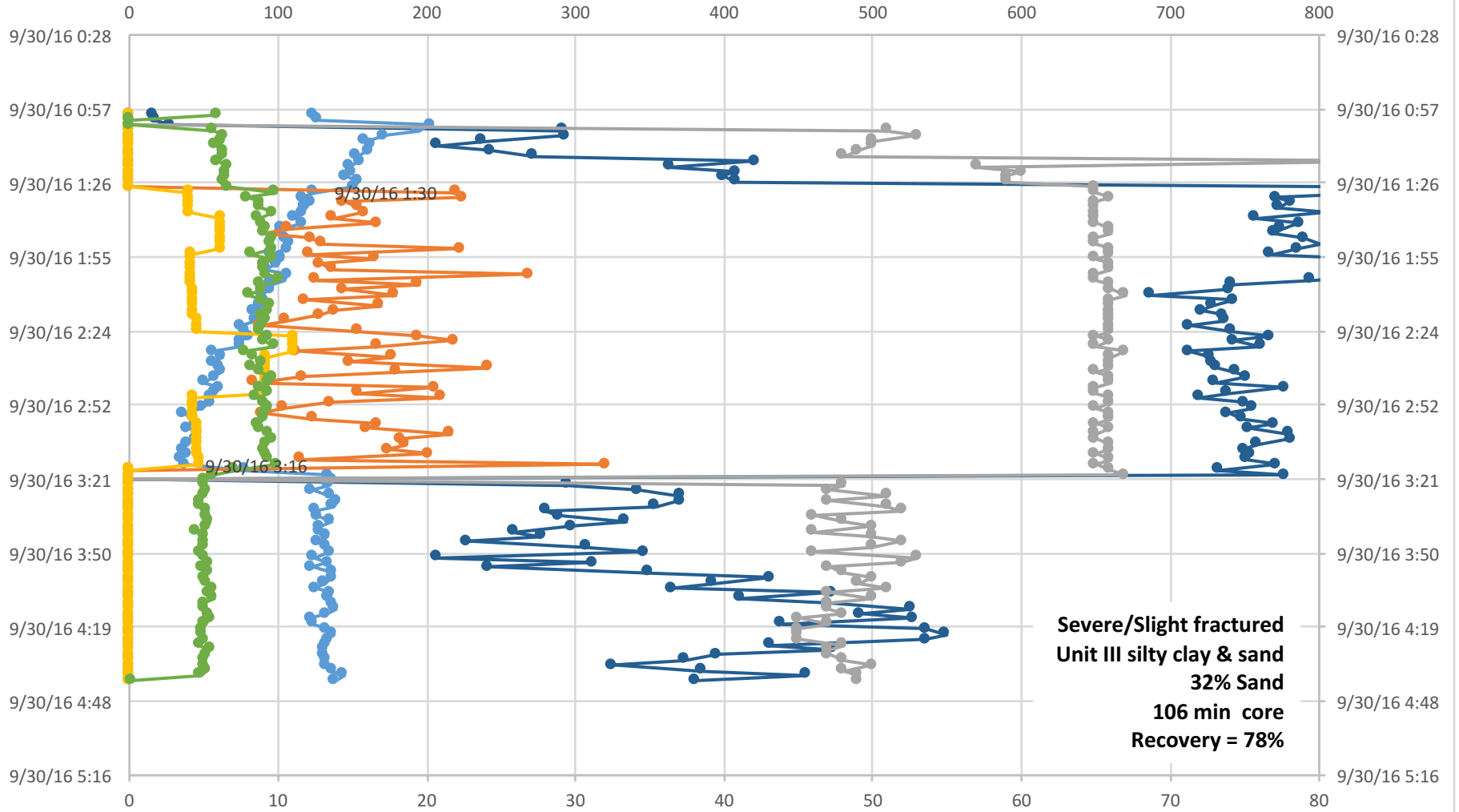
U1481A-35R

Standpipe Pressure (psi)



U1481A-36R

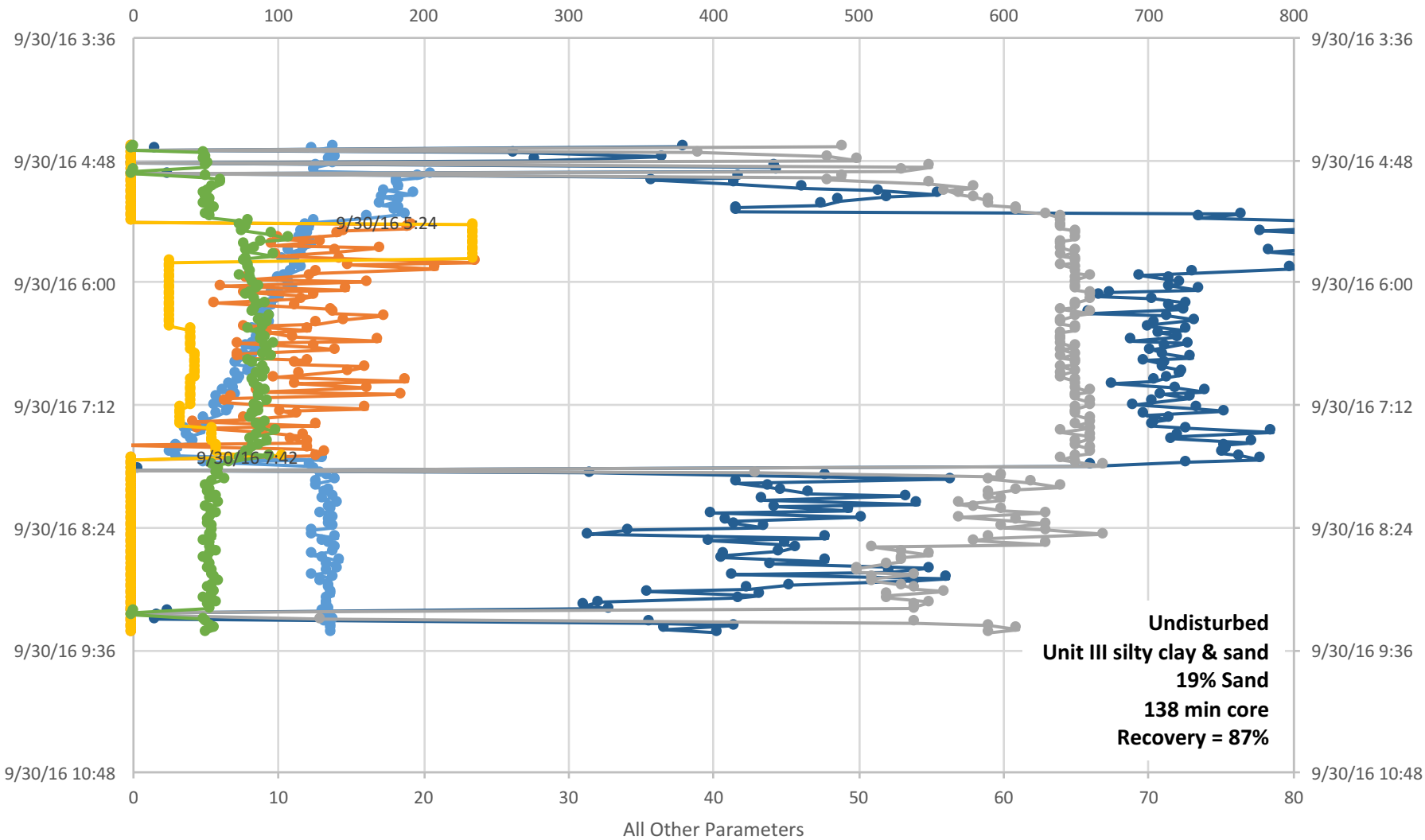
Standpipe Pressure (psi)



● Stand Pipe Pressure (psi) ● Block Position ● WOB klb (AD Hook Load) ● MUD Pmps TOT (SPM) ● ROP (m/hr) ● TD Torque (k ft-lb)

U1481A-37R

Standpipe Pressure (psi)



U1481A-38R

Standpipe Pressure (psi)

