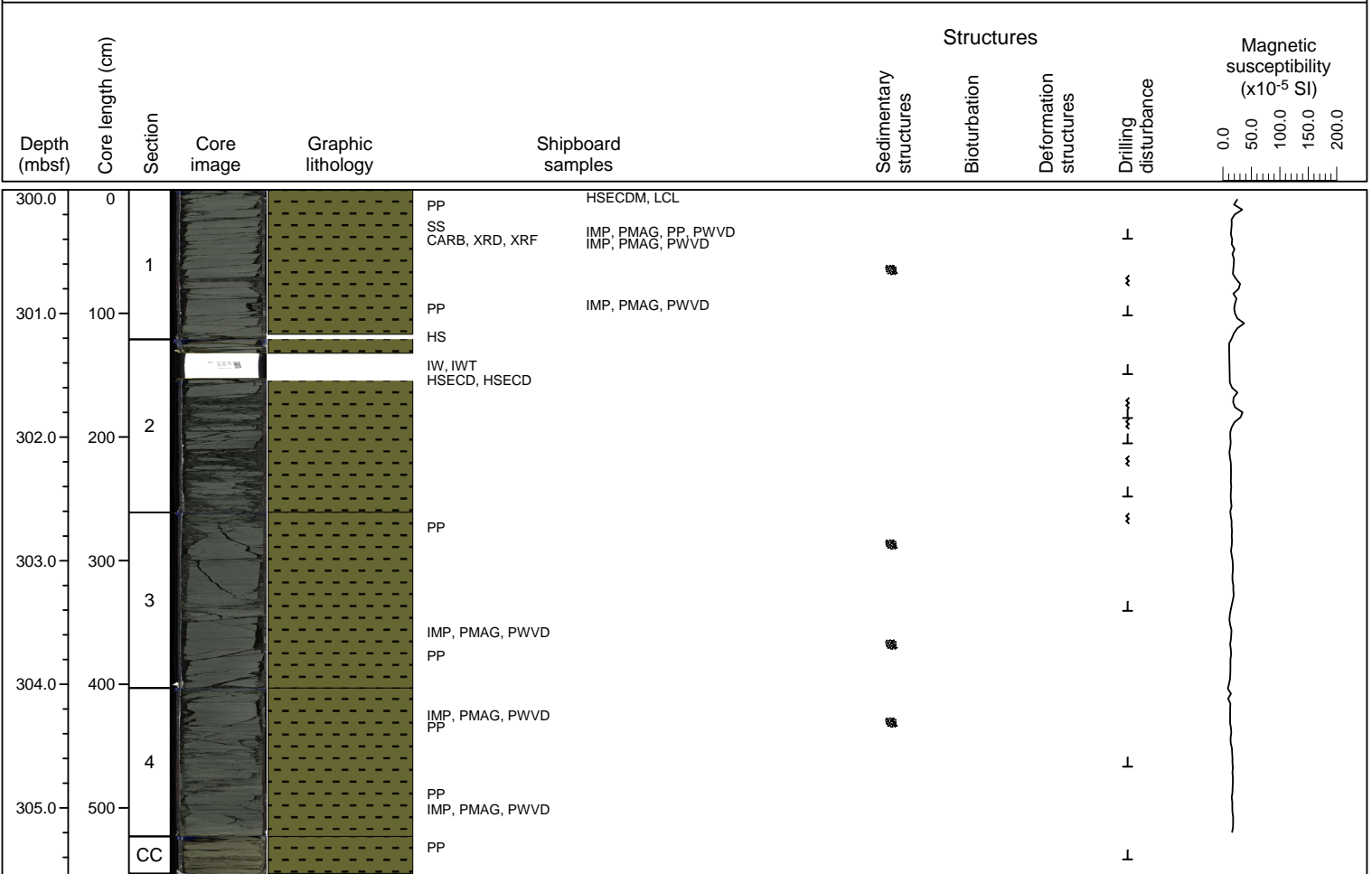


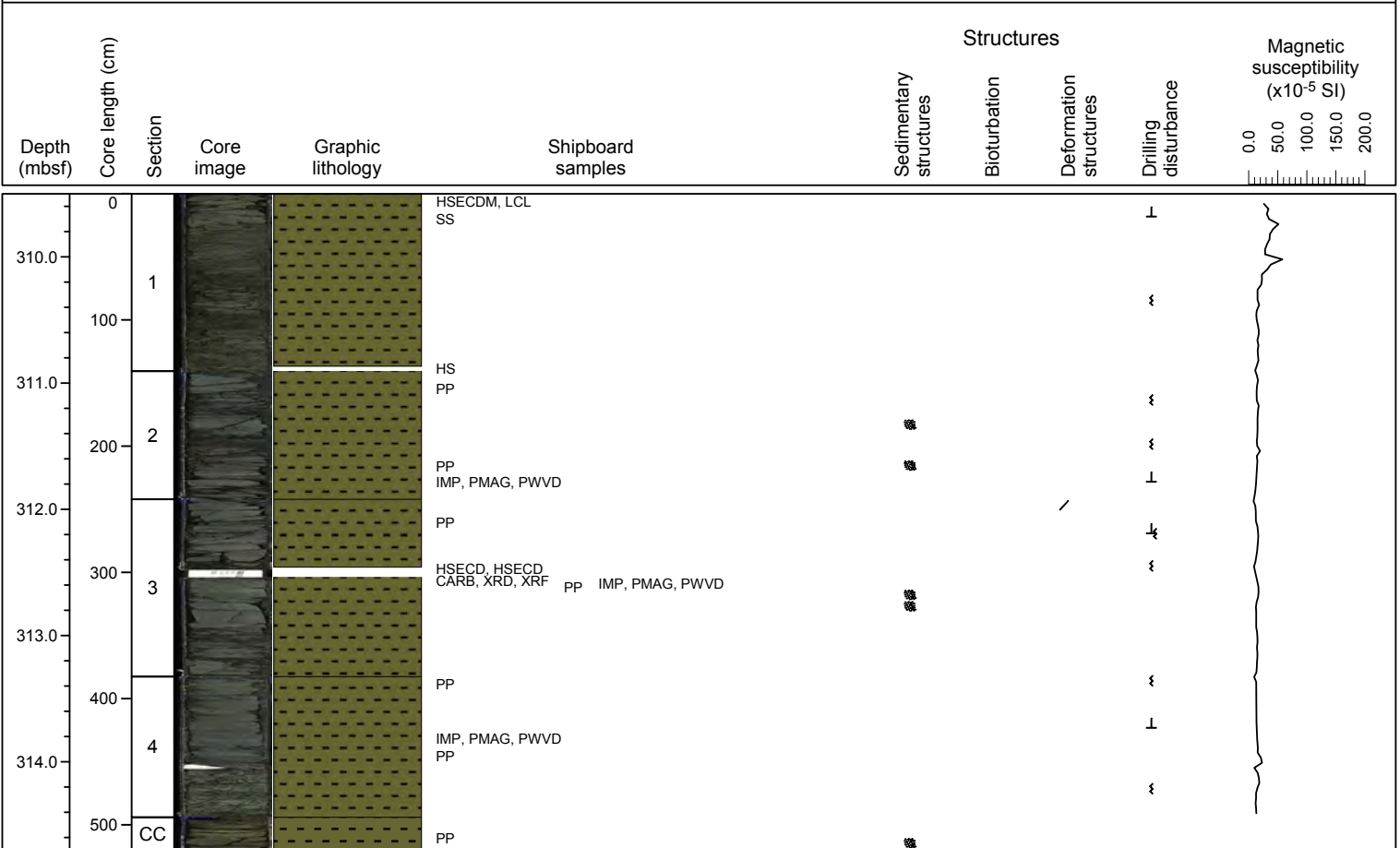
Hole C0010C Core 1R, interval 300-305.53 m (core depth below seafloor)

Major lithology: Greenish gray silty claystone. Slightly mottled by bioturbation with local faint color bands.



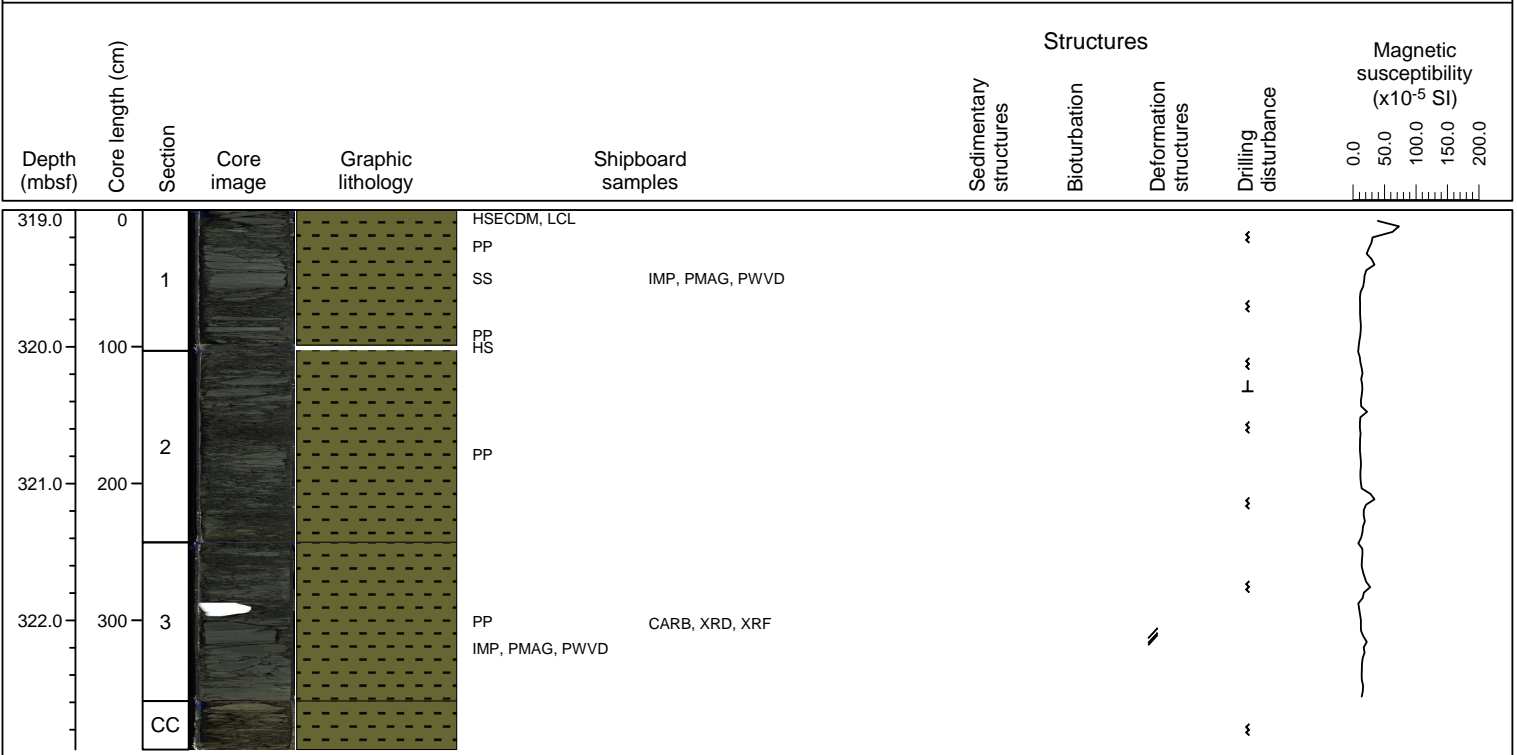
Hole C0010C Core 2R, interval 309.5-314.715 m (core depth below seafloor)

Dominant lithology: Greenish gray silty claystone. Intact pieces how faint laminae and mottled bioturbation.



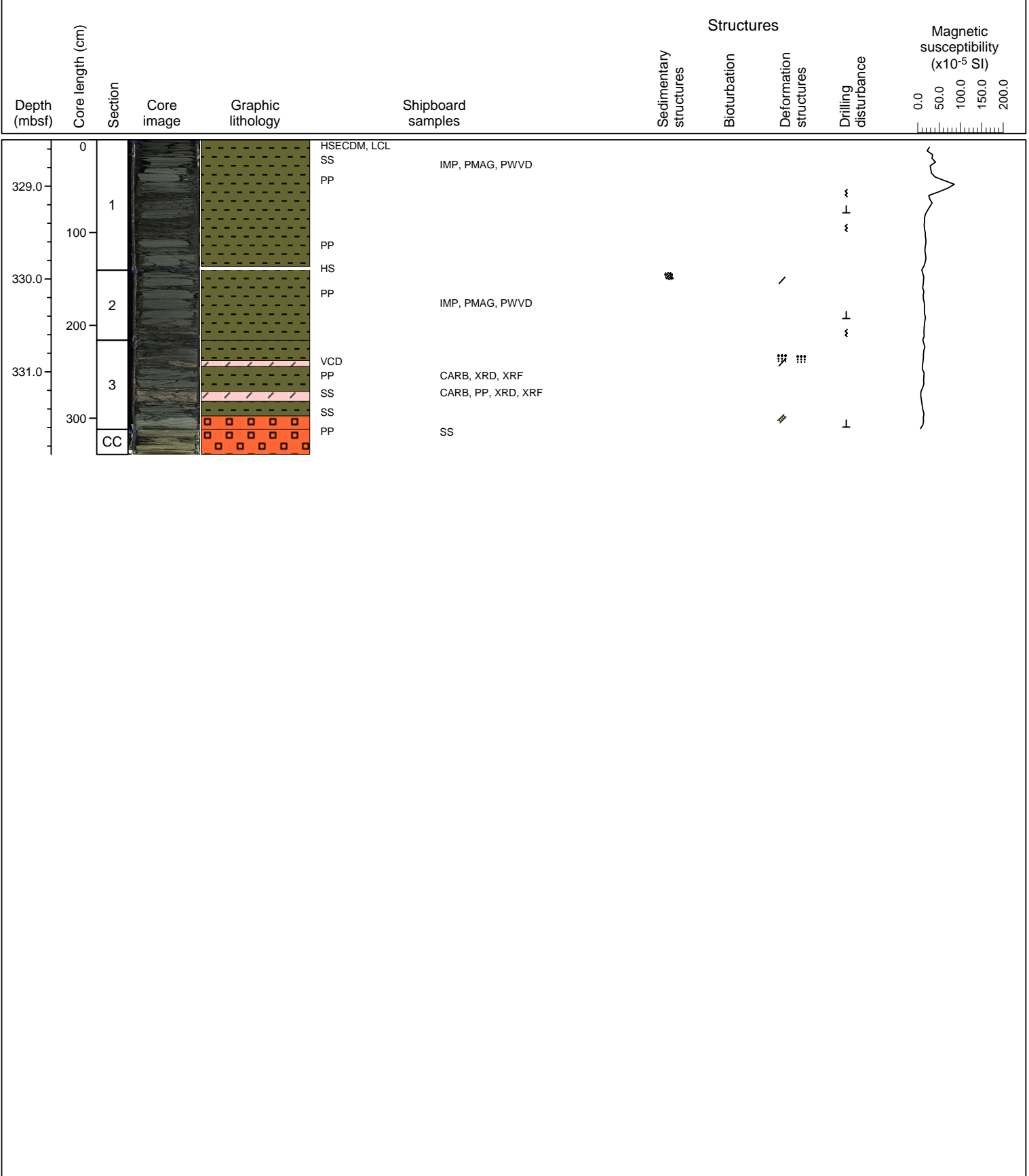
Hole C0010C Core 3R, interval 319-322.945 m (core depth below seafloor)

Dominant lithology: Greenish gray silty claystone. Intact pieces display faint laminae.



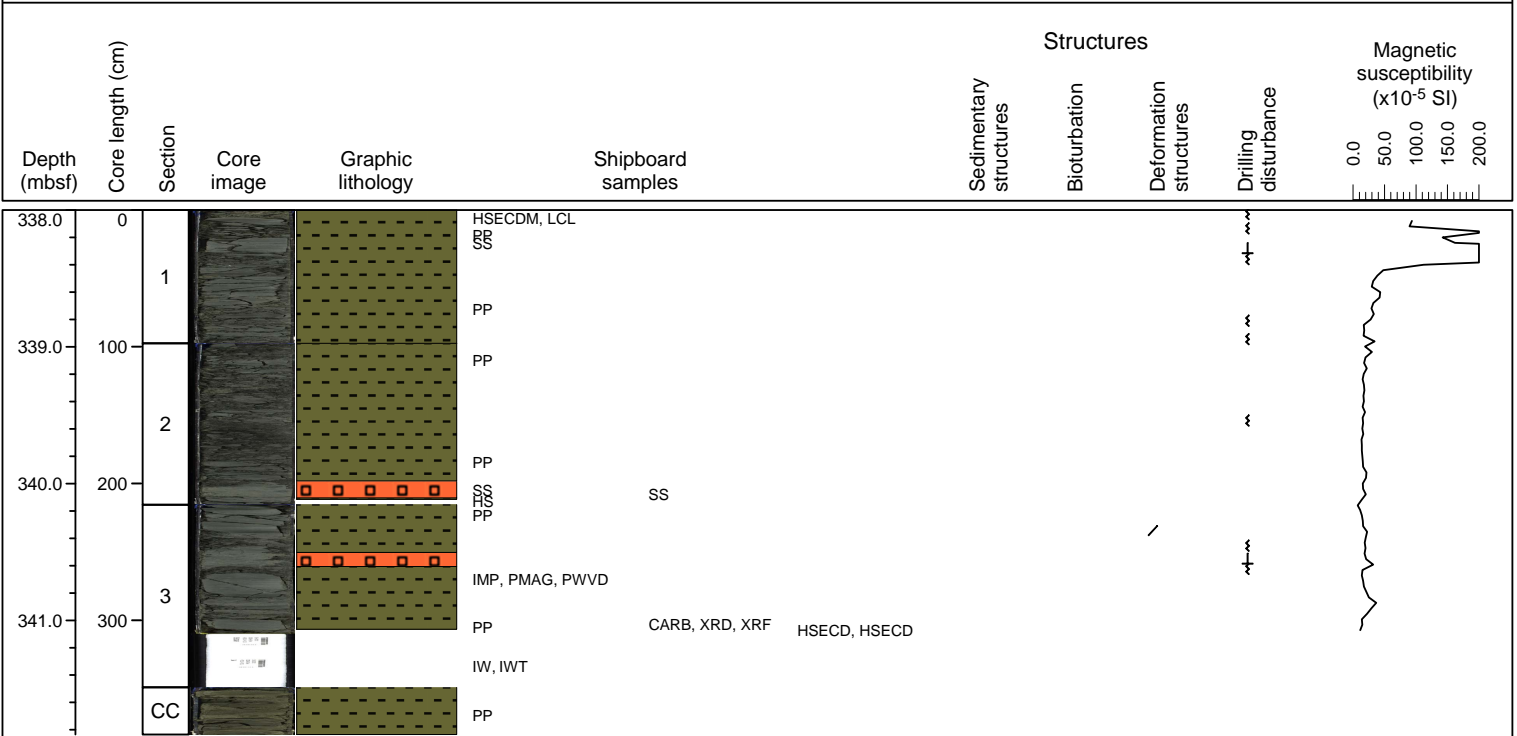
Hole C0010C Core 4R, interval 328.5-331.89 m (core depth below seafloor)

Dominant lithology: Greenish gray silty claystone. Intact pieces mottled by bioturbation.
 Minor lithologies: Medium gray volcanic ash.
 Medium gray sedimentary breccia with subangular clasts of mudstone in mudstone matrix. Variable amounts of biogenic carbonate.



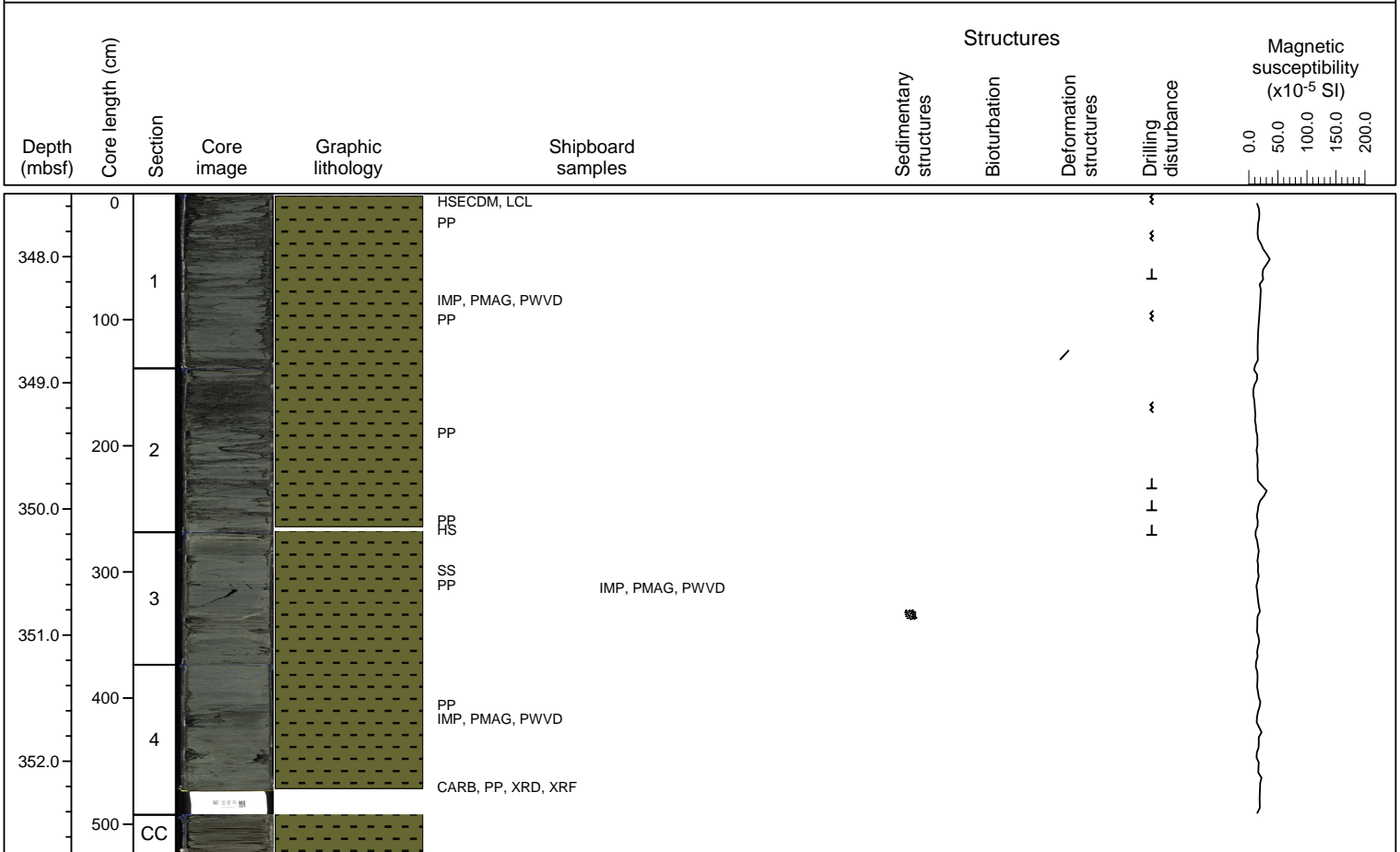
Hole C0010C Core 5R, interval 338-341.835 m (core depth below seafloor)

Dominant lithology: Greenish gray silty claystone. Intact pieces with faint laminae.
 Minor lithology: Sedimentary breccia with subangular to subrounded clasts of mudstone in matrix of mudstone.



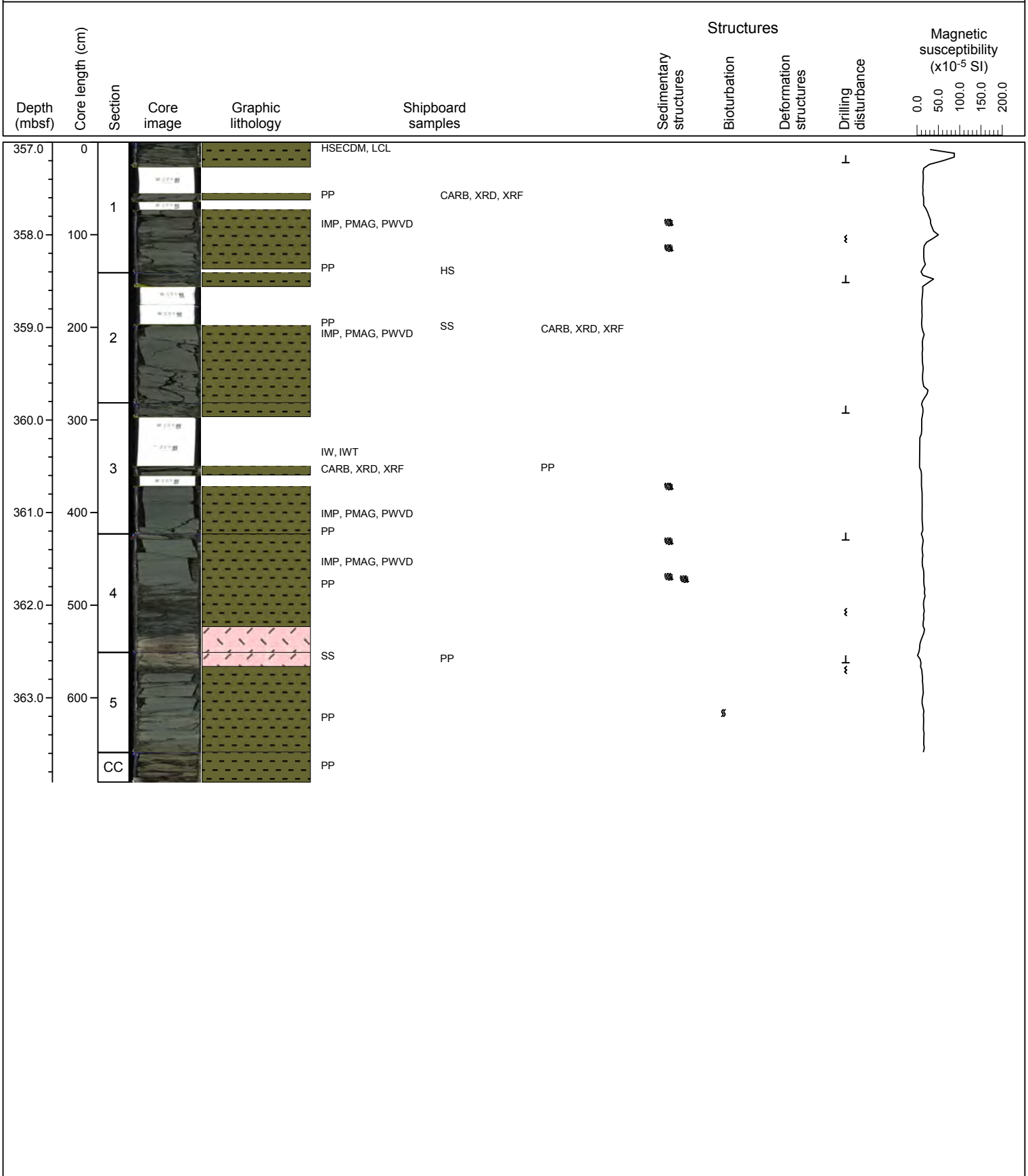
Hole C0010C Core 6R, interval 347.5-352.73 m (core depth below seafloor)

Dominant lithology: Greenish gray silty claystone. Intact pieces display faint laminae, very thin beds, and mottled bioturbation. Possible sedimentary breccia in Section 3 with subtle changes in color.



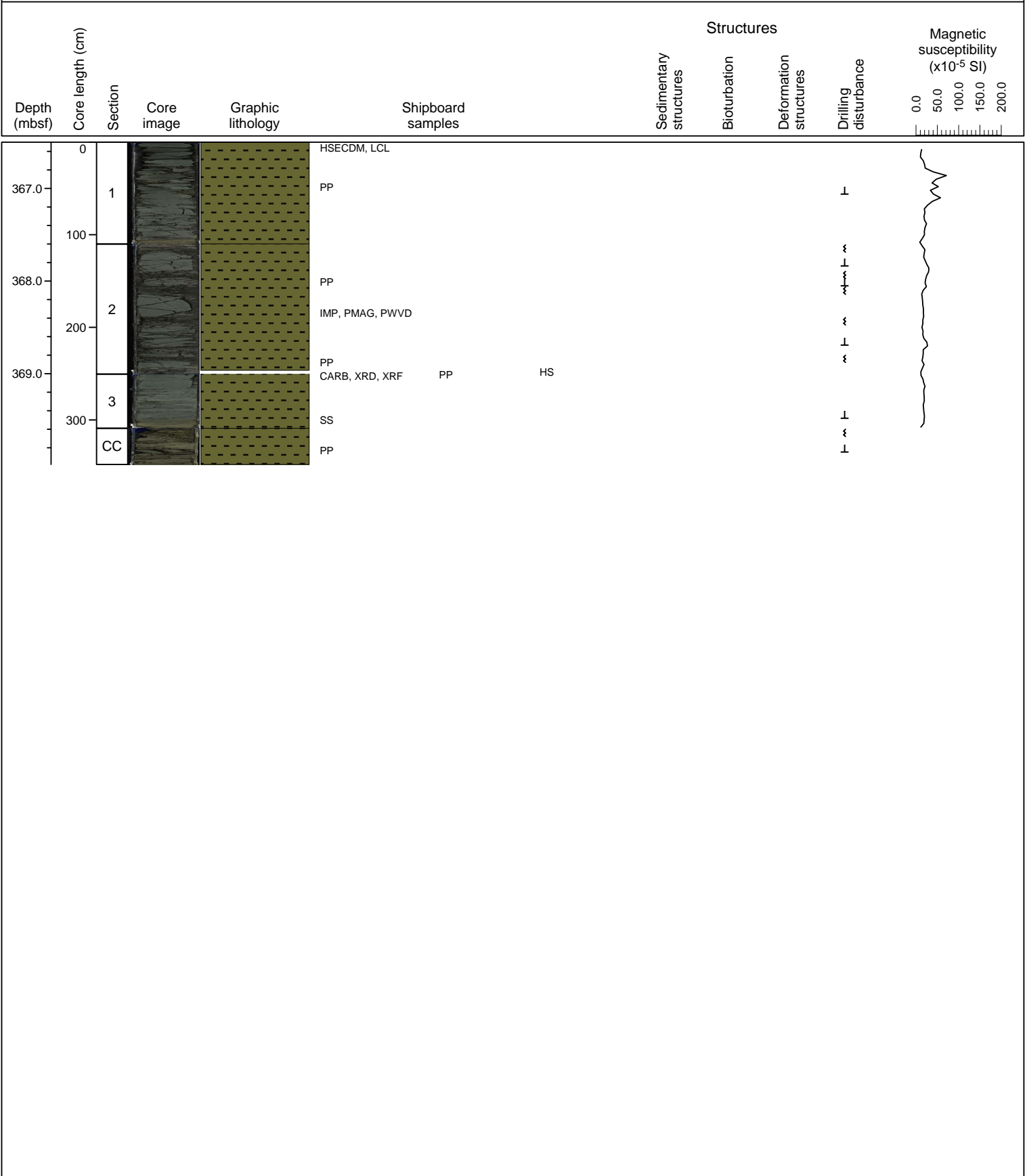
Hole C0010C Core 7R, interval 357-363.91 m (core depth below seafloor)

Dominant lithology: Greenish gray silty claystone. Intact pieces show laminae, mottled bioturbation, and scattered foraminifers.
 Minor lithology: Light gray volcanic ash. Sharp inclined top.



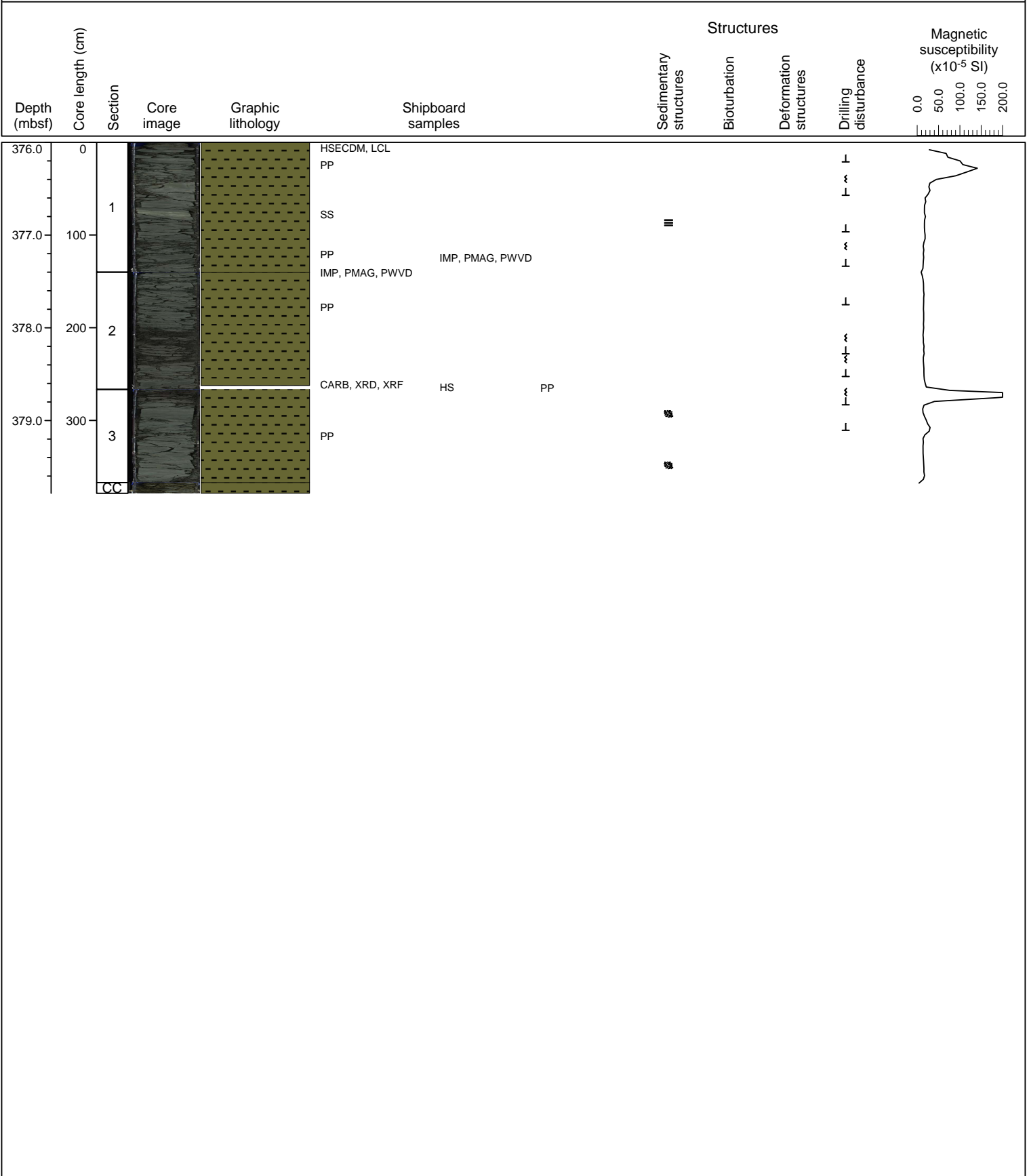
Hole C0010C Core 8R, interval 366.5-369.98 m (core depth below seafloor)

Dominant lithology: Gray to greenish gray silty claystone. Intact pieces show laminae. Scattered foraminifers.



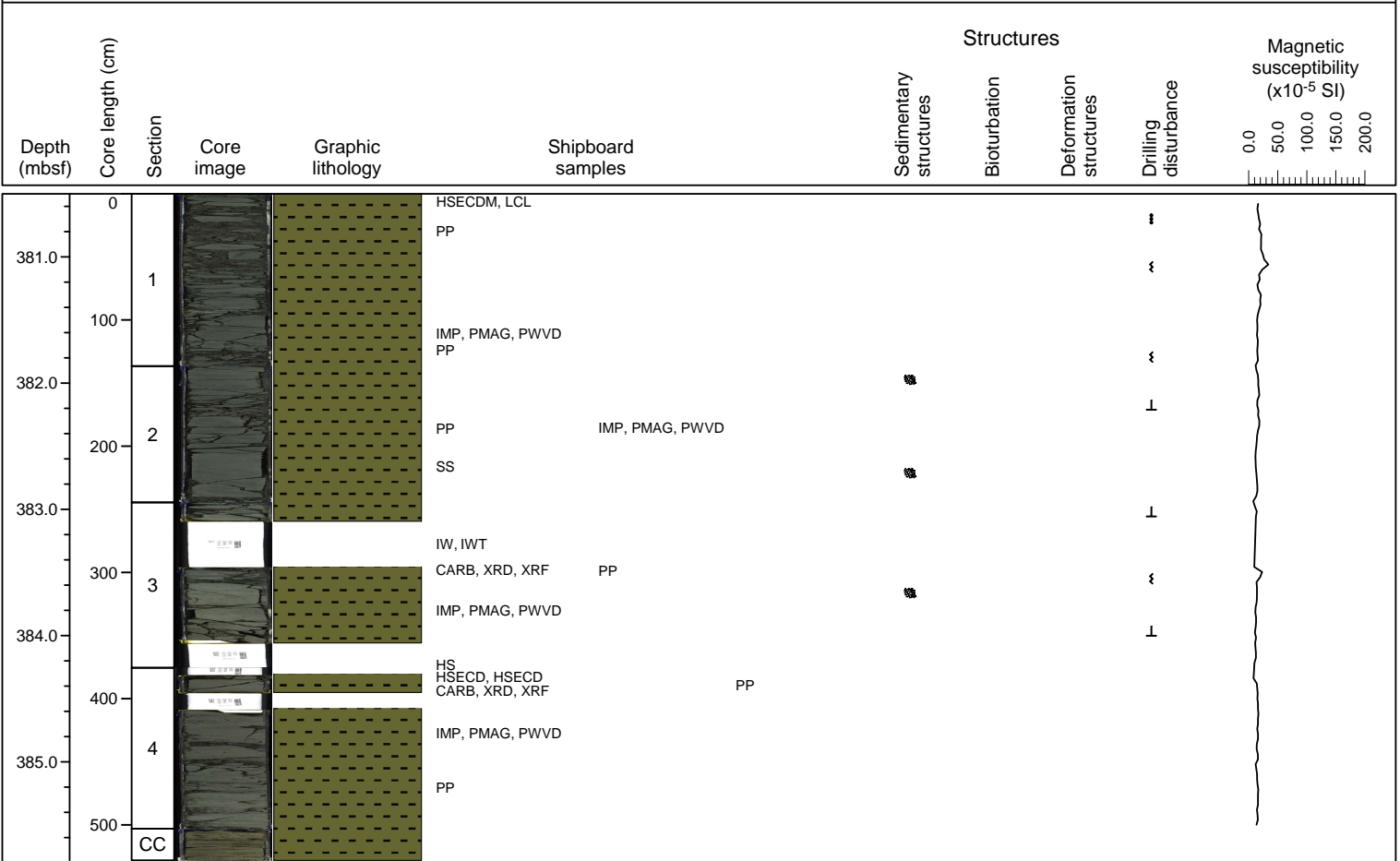
Hole C0010C Core 9R, interval 376-379.785 m (core depth below seafloor)

Dominant lithology: Gray to greenish gray silty claystone. Some intact pieces show inclined stratification with moderate dips. Mottled by bioturbation.



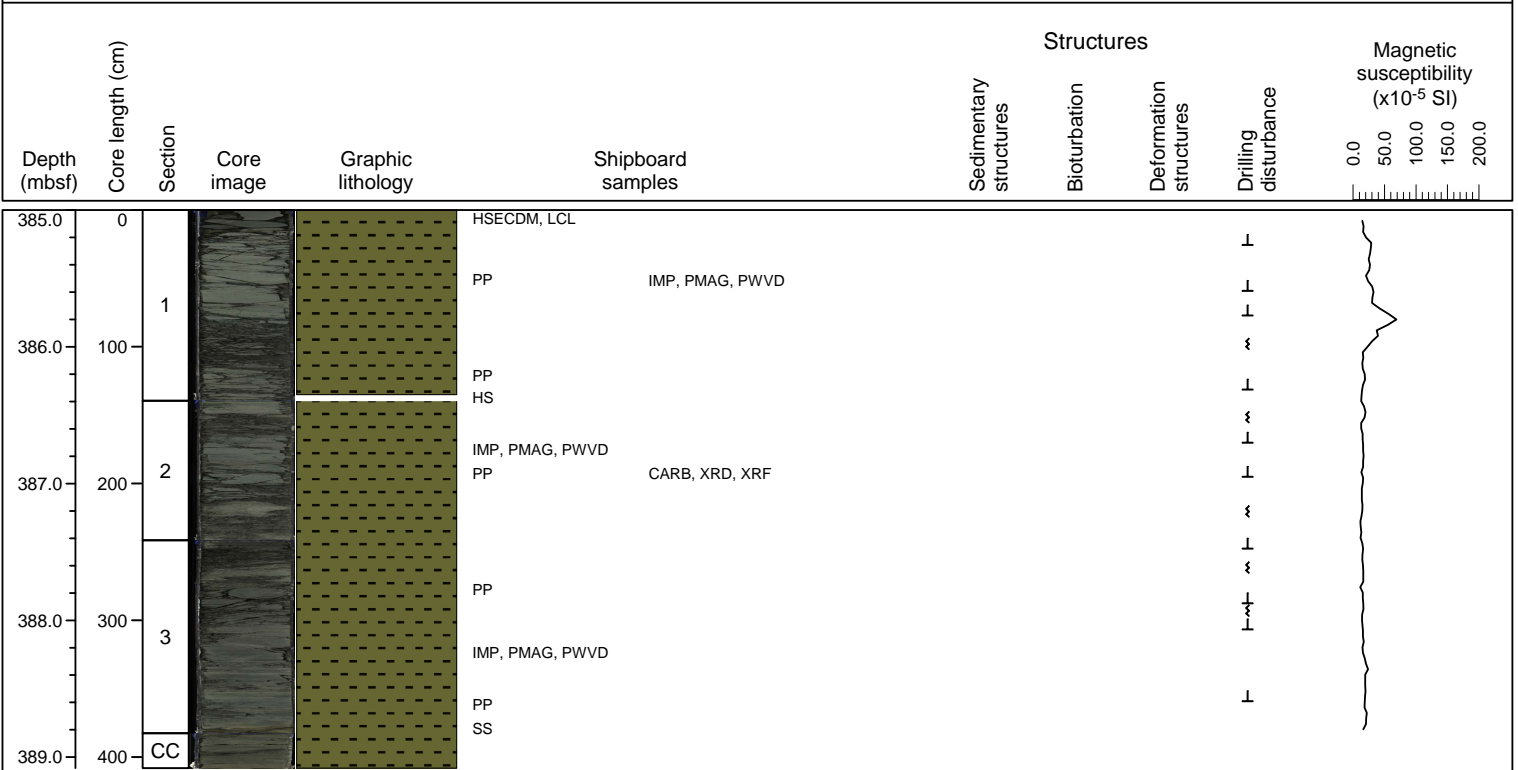
Hole C0010C Core 10R, interval 380.5-385.78 m (core depth below seafloor)

Dominant lithology: Gray to greenish gray silty claystone. Some intact pieces show inclined laminae with moderate dips. Mottled by bioturbation.



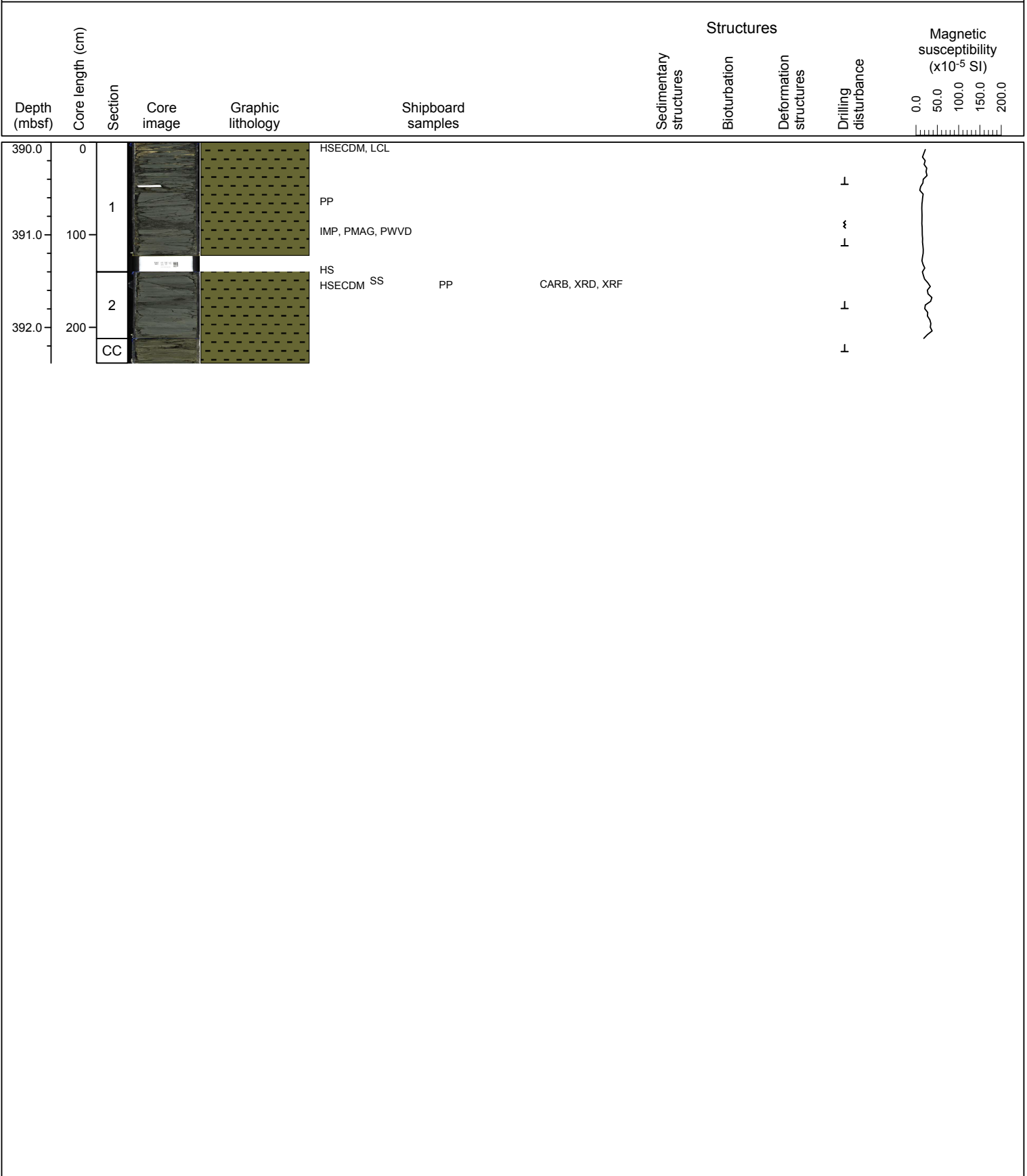
Hole C0010C Core 11R, interval 385-389.08 m (core depth below seafloor)

Dominant lithology: Gray to greenish gray silty claystone. Intact pieces mottled or with sparse laminae.



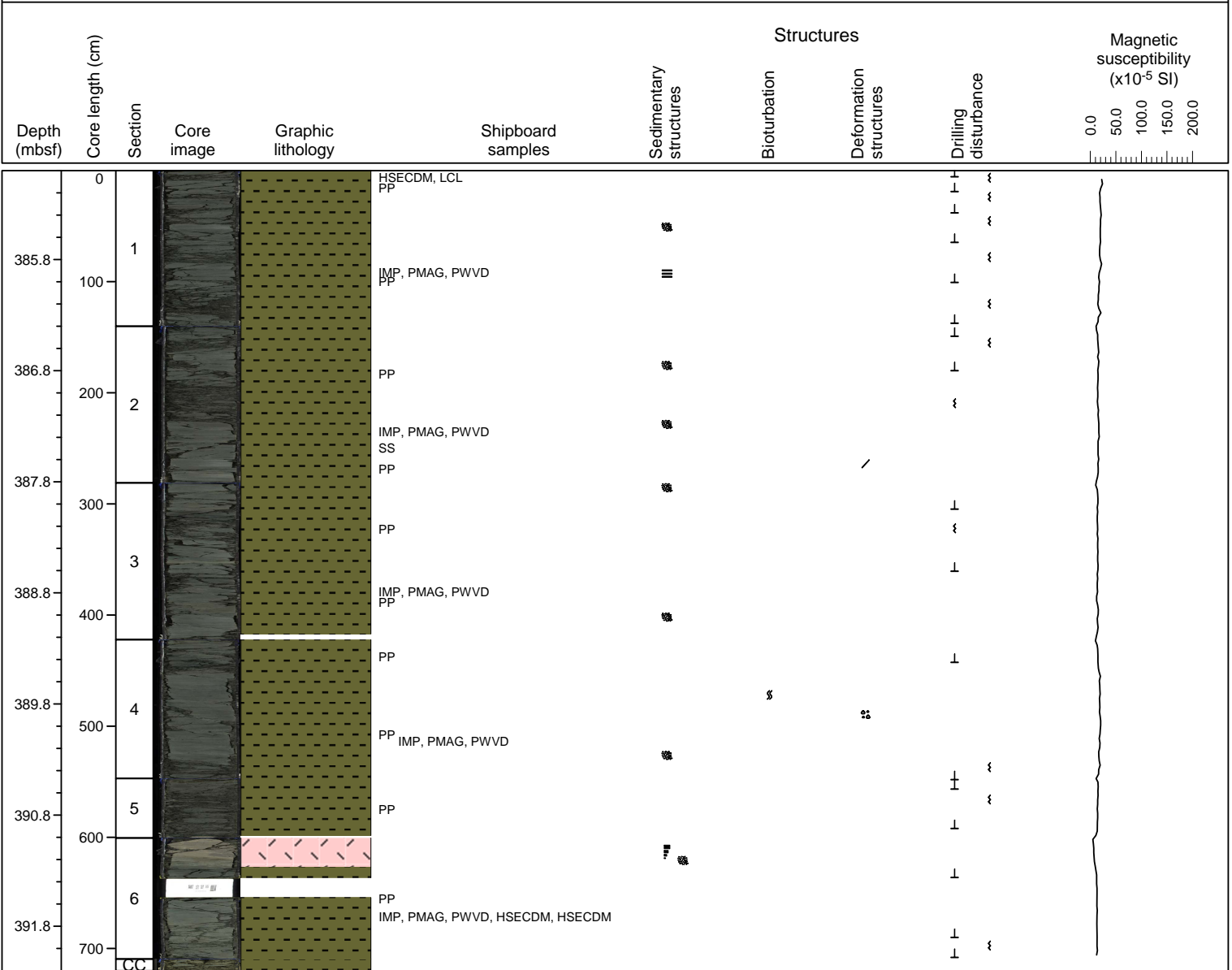
Hole C0010C Core 12R, interval 390-392.385 m (core depth below seafloor)

Dominant lithology: Gray to greenish gray silty claystone. Intact pieces mottled by bioturbation.



Hole C0010D Core 1R, interval 385-392.2 m (core depth below seafloor)

Dominant lithology: Gray to greenish gray silty claystone. Some intact pieces show planar laminae. Others are mottled by bioturbation. Scattered foraminifers.
 Minor lithology: Gray volcanic ash. Inverse grading with bioturbated base and sharp top. Inclined laminae in bottom portion of the bed.



Hole C0010E Core 1R, interval 360-360.22 m (core depth below seafloor)

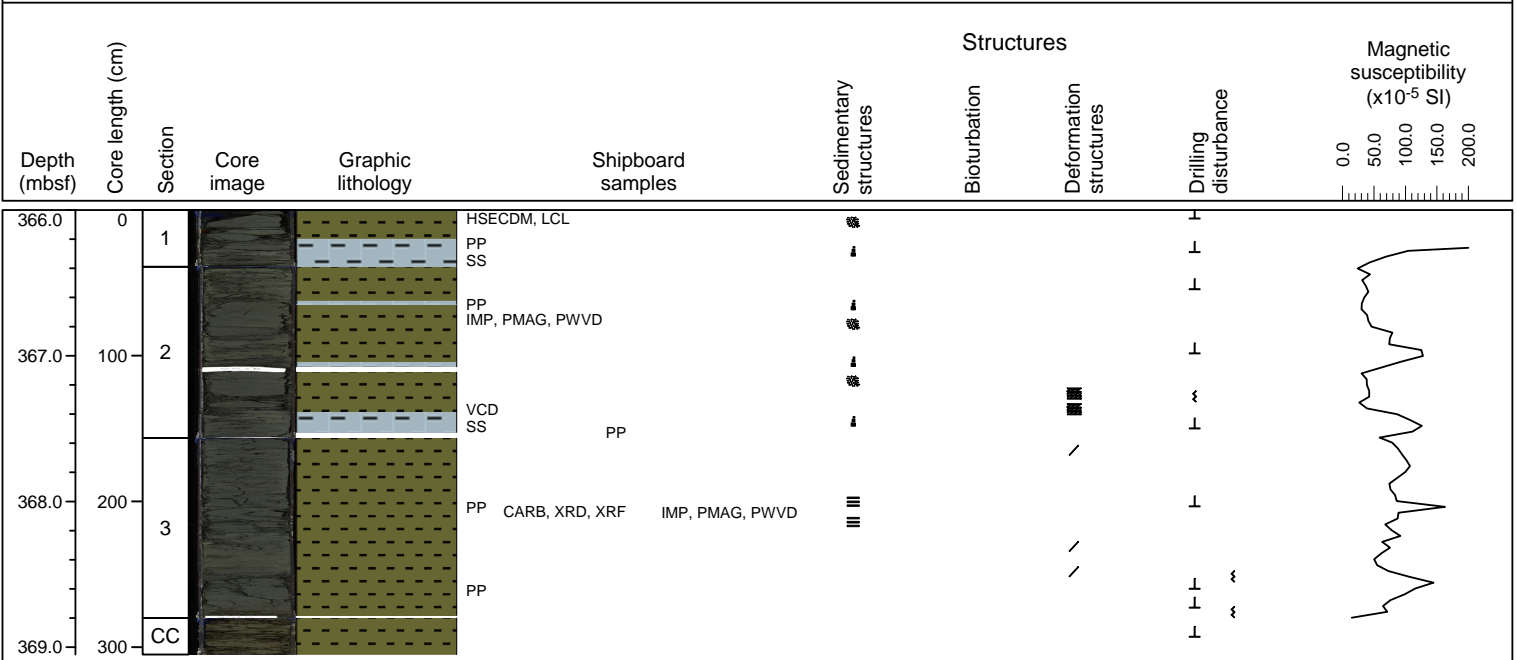
Dominant lithology: Brownish gray to olive gray clayey siltstone. Mottled.

Depth (mbsf)	Core length (cm)	Section	Core image	Graphic lithology	Shipboard samples	Structures				Magnetic susceptibility (x10 ⁻⁵ SI)
						Sedimentary structures	Bioturbation	Deformation structures	Drilling disturbance	



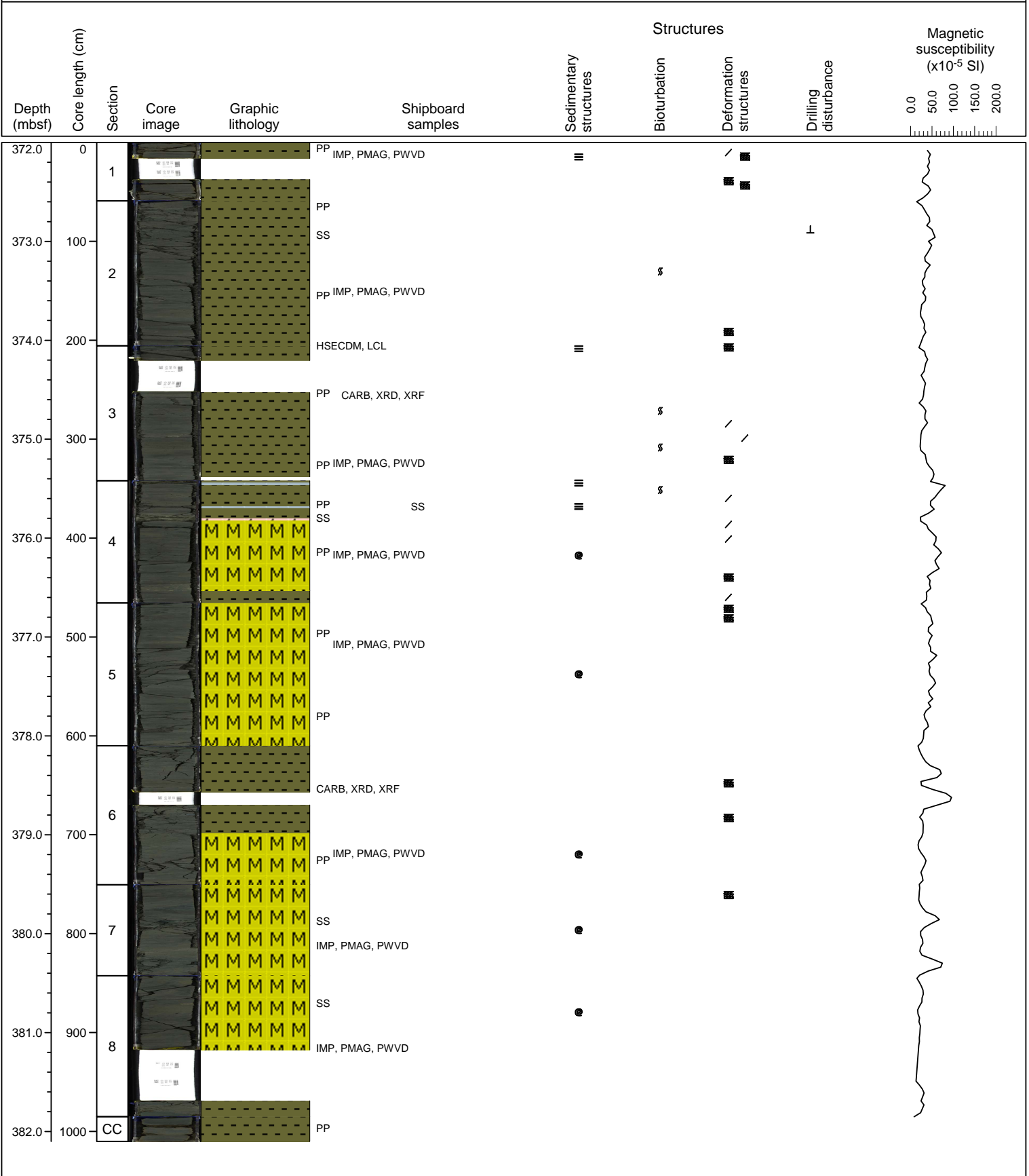
Hole C0010E Core 2R, interval 366-369.05 m (core depth below seafloor)

Dominant lithology: Olive gray clayey siltstone.
 Minor lithology: Gray siltstone with normal size grading and faint planar laminae. Grades upward into dominant lithology.



Hole C0010E Core 3R, interval 372-382.1 m (core depth below seafloor)

Dominant lithology: Olive gray clayey siltstone. Mottled by bioturbation.
 Common lithology: Mass transport deposit with chaotic bedding, dispersed clasts of reworked clayey siltstone, irregular to steeply inclined laminae, granule-size to pebble-size lithic grains, and sharp truncation surfaces.
 Minor lithologies: Thin beds of dark gray siltstone with planar laminae. Thin beds and scattered lenses of gray volcanic ash.



Hole C0010E Core 4R, interval 381.5-390.275 m (core depth below seafloor)

Dominant lithology: Dark olive gray silty claystone. Mottled by bioturbation with local faint laminae.
 Minor lithologies: Light medium gray volcanic ash with sharp base and top. Poorly indurated to soupy.
 Gray siltstone with sharp base, planar laminae and graded top. Thin beds and poorly indurated.
 Sedimentary breccia with clasts of mudstone in matrix of mudstone. Clasts are granule-size, subrounded, and supported by matrix.

