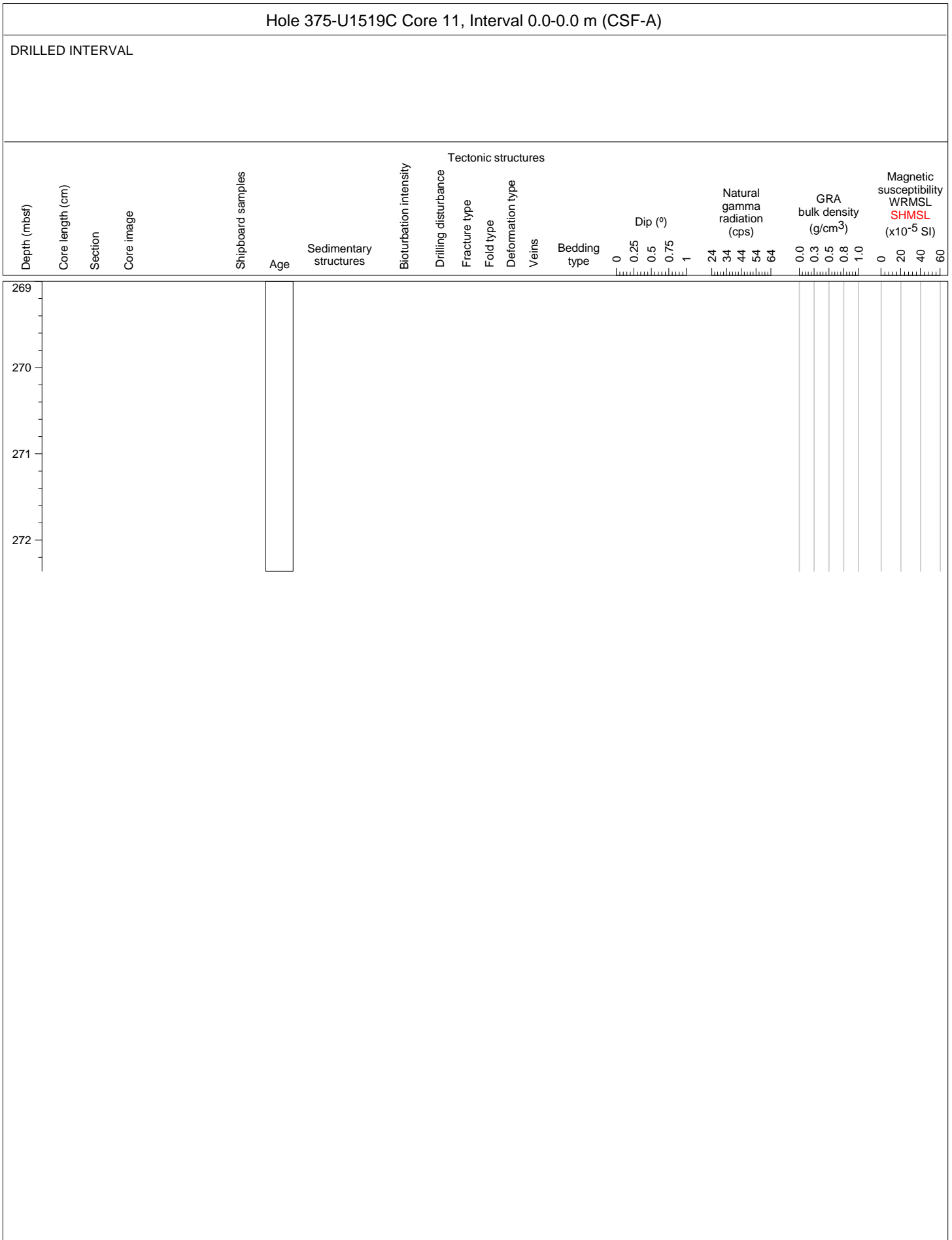
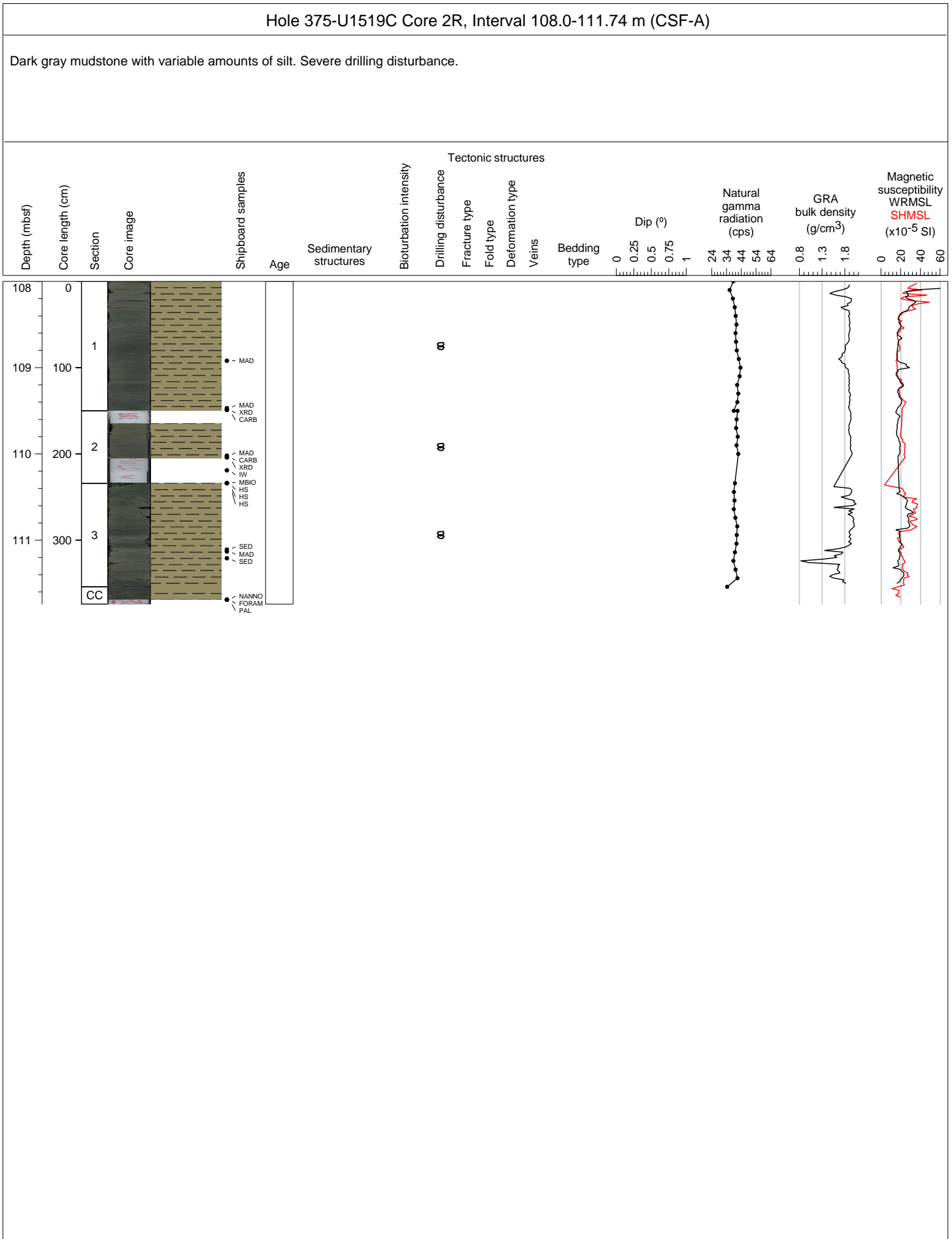
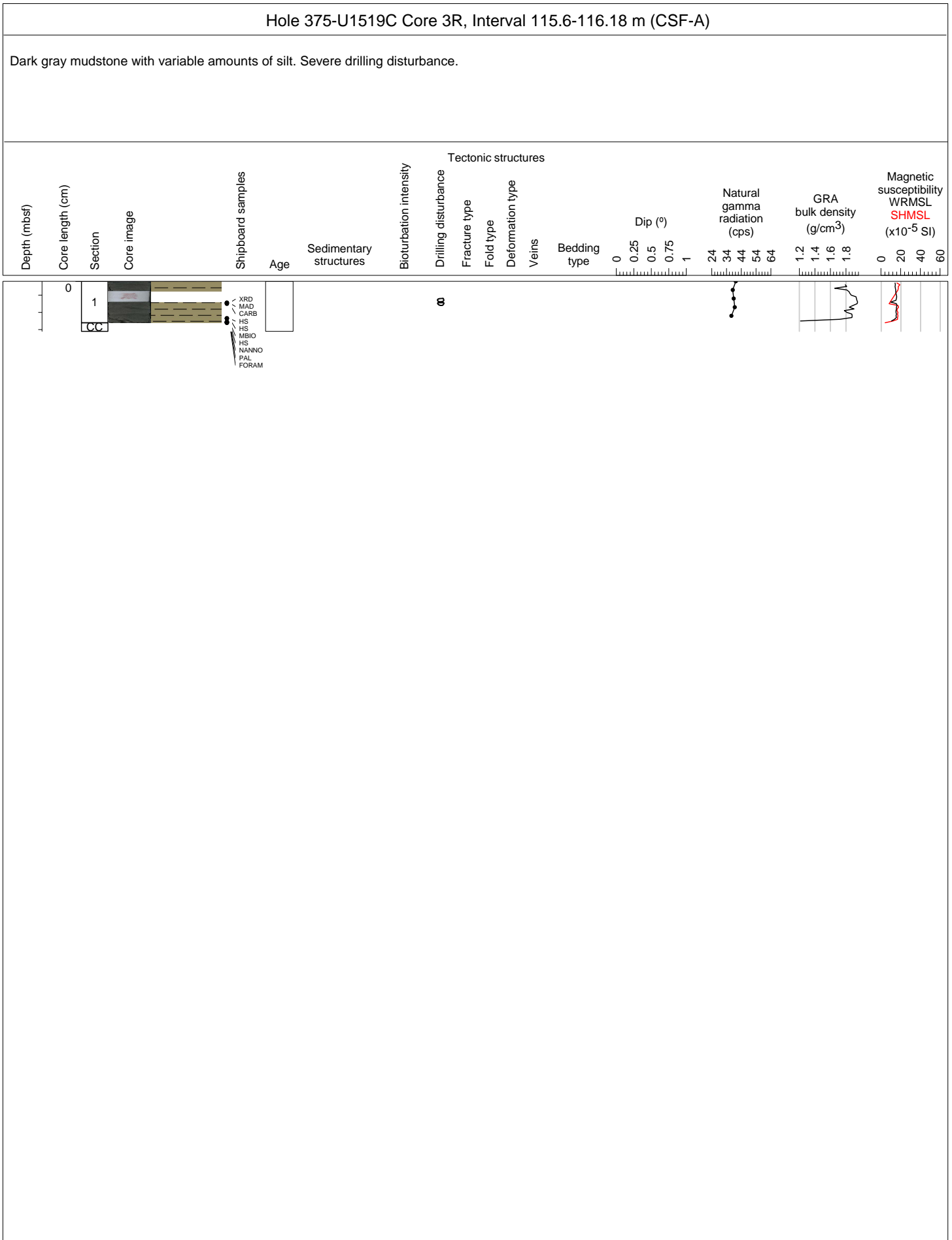


Hole 372-U1519A Core 11, Interval 0.0-650.0 m (CSF-A)															
LOGGING WHILE DRILLING															
Depth (mbsf)	Core length (cm)	Section	Core image	Shipboard samples	Age	Sedimentary structures	Bioturbation intensity	Drilling disturbance	Tectonic structures				Natural gamma radiation (cps)	GRA bulk density (g/cm <sup>3</sup> )	Magnetic susceptibility WRMSL SHMSL (x10 <sup>-5</sup> SI)
									Fracture type	Fold type	Deformation type	Veins			
0															
1															
2															
3															
4															
5															
6															
7															
8															
9															
10															
11															



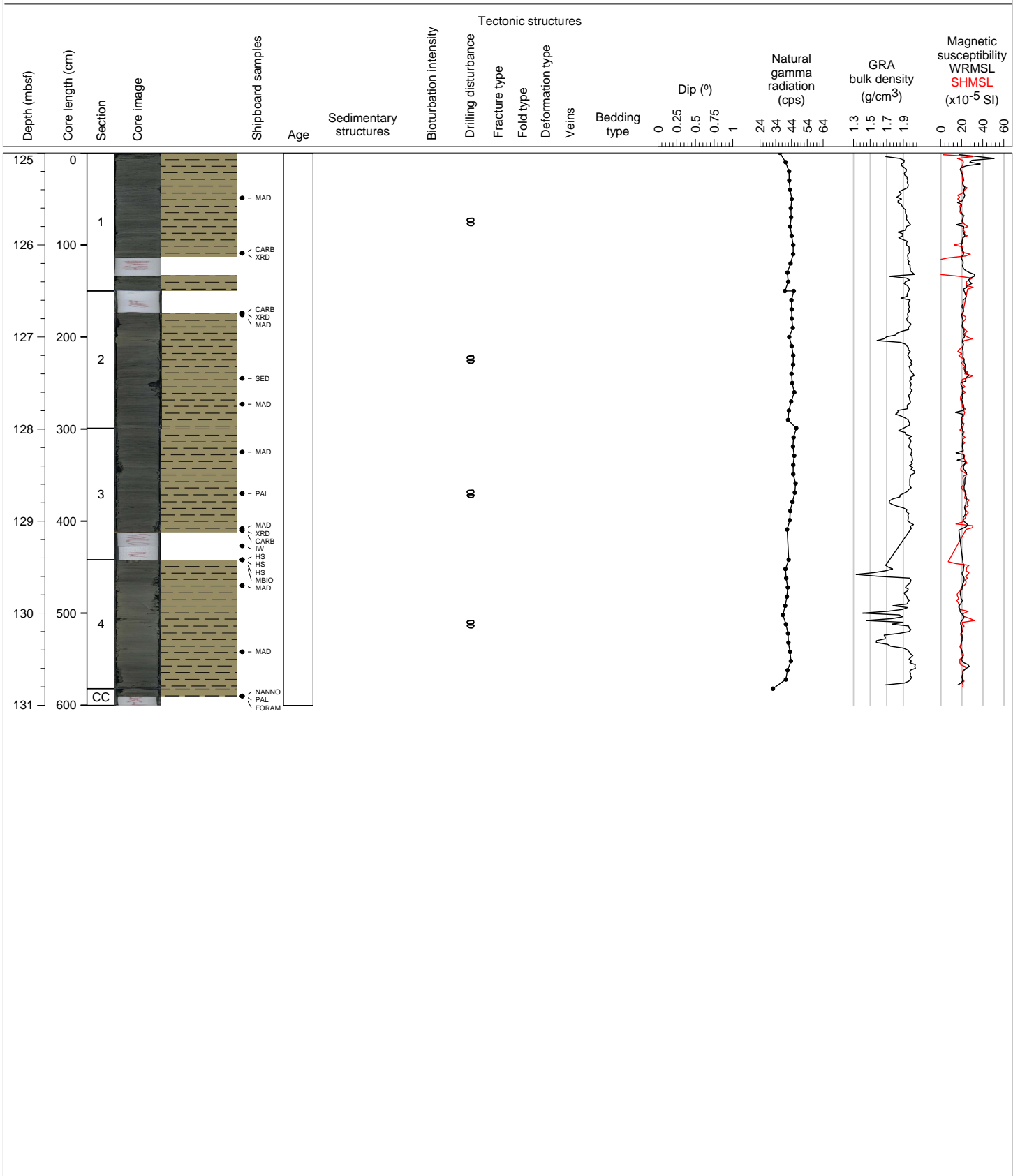






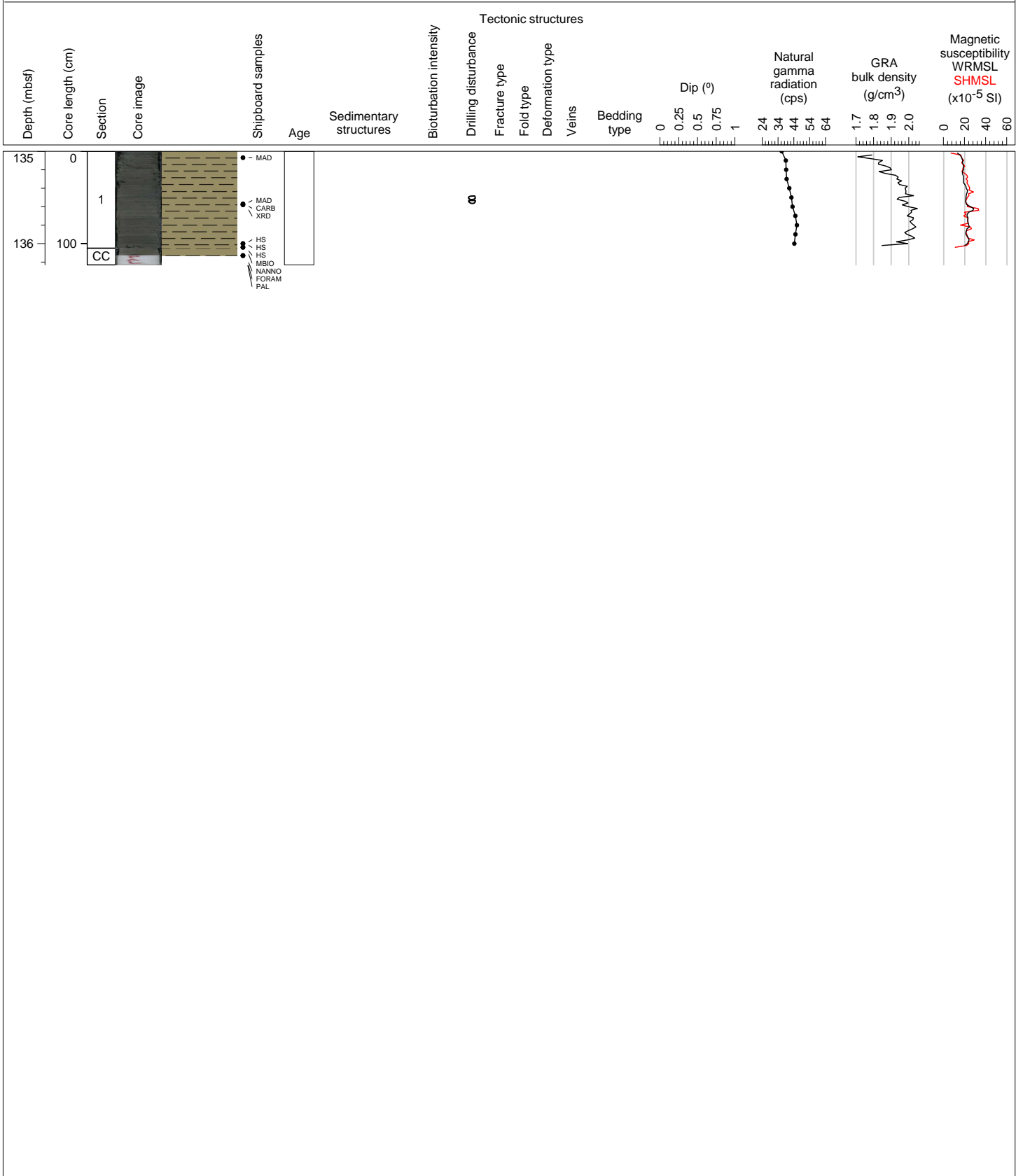
Hole 375-U1519C Core 4R, Interval 125.2-131.2 m (CSF-A)

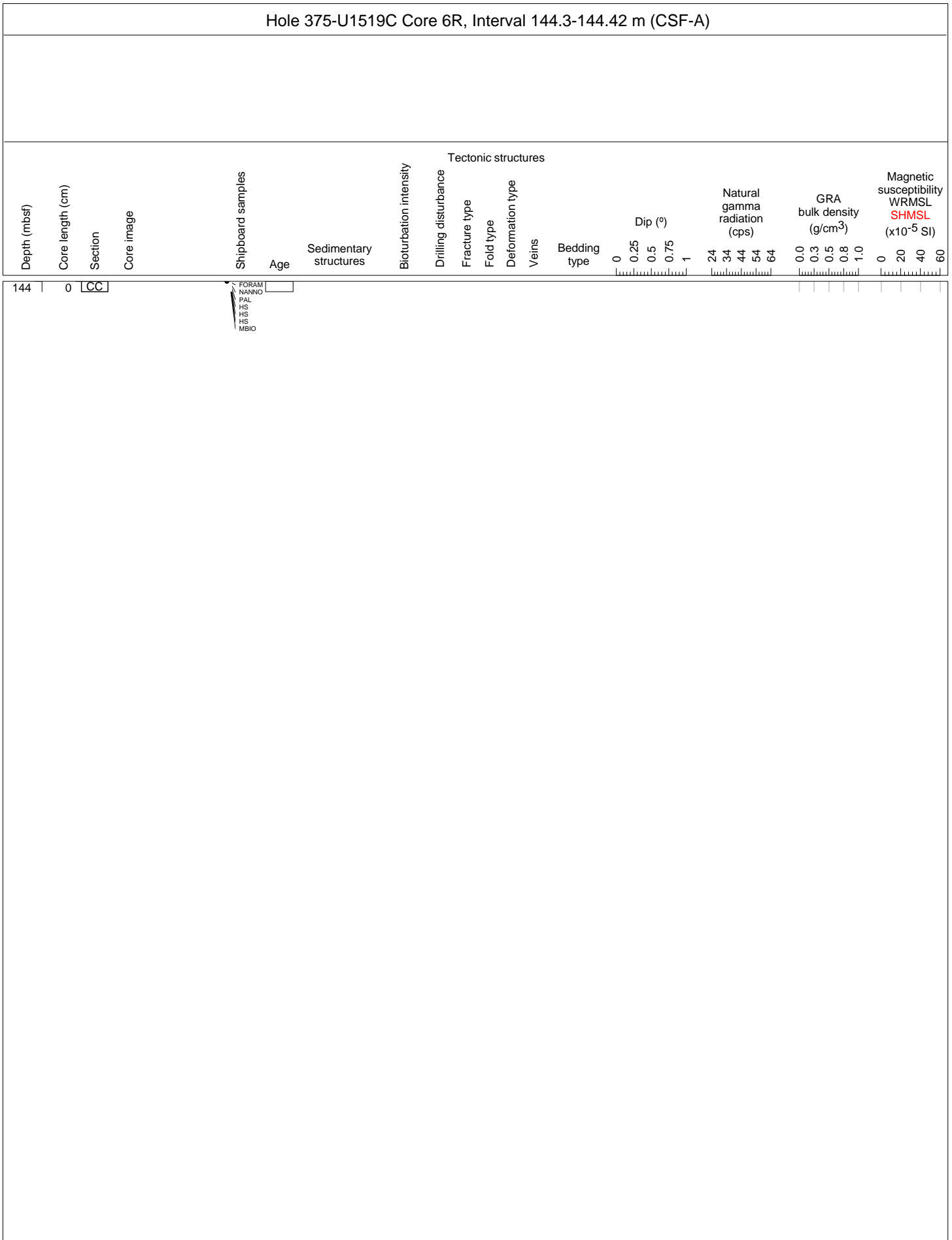
Dark gray mudstone with variable amounts of silt. Severe drilling disturbance.



Hole 375-U1519C Core 5R, Interval 134.8-136.03 m (CSF-A)

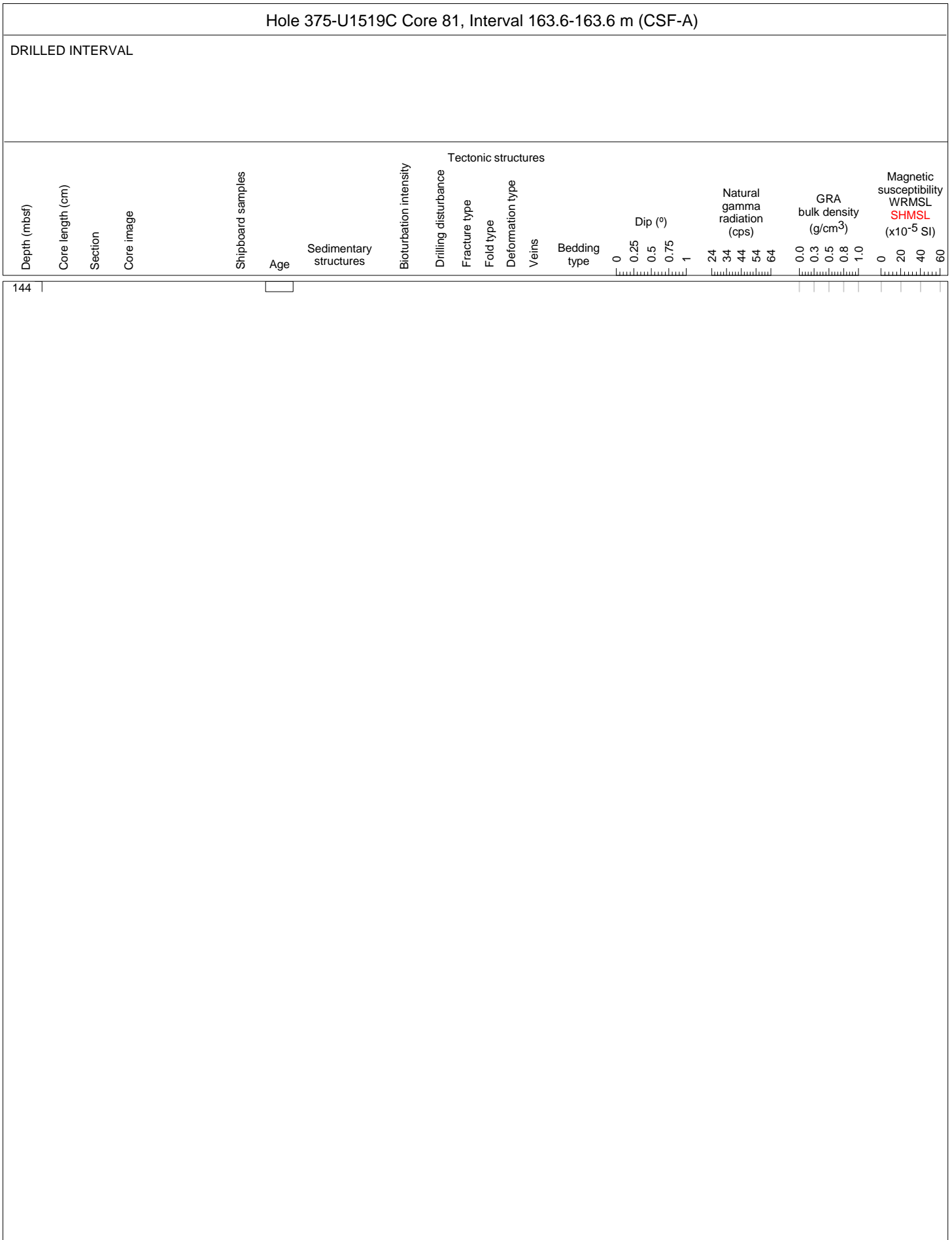
Dark gray mudstone with variable amounts of silt. Severe drilling disturbance.

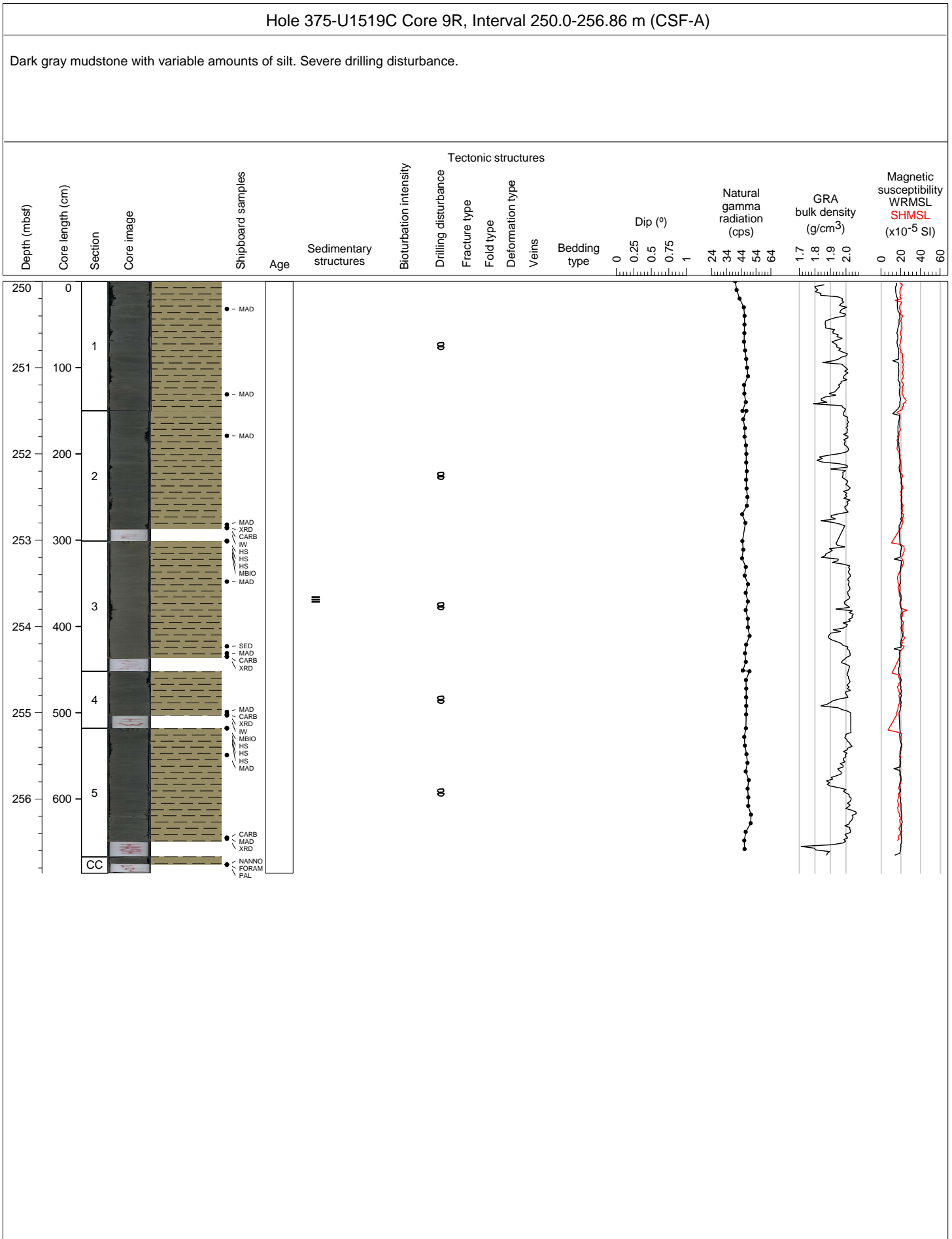






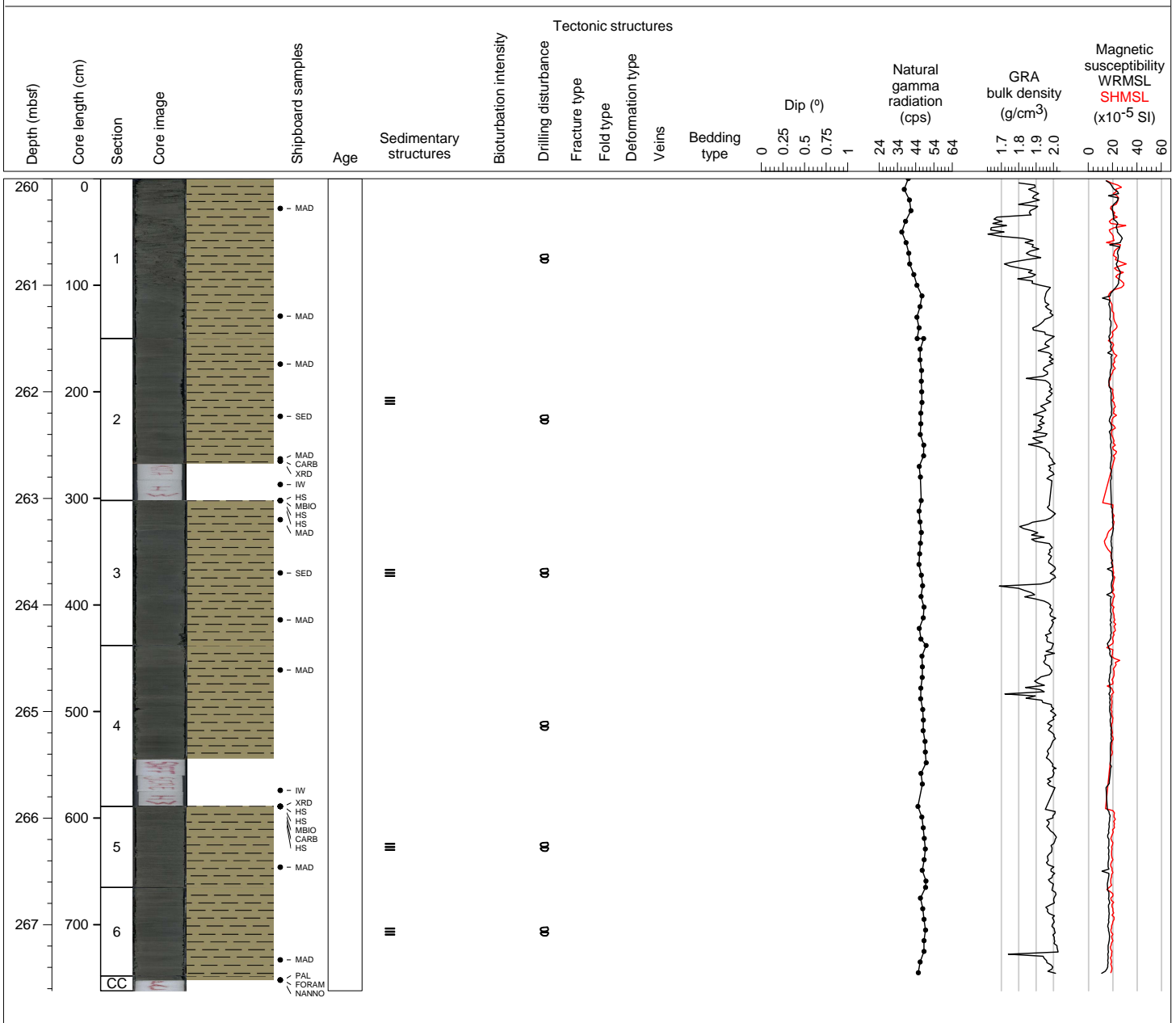
Hole 375-U1519C Core 7R, Interval 154.0-154.0 m (CSF-A)																	
NO RECOVERY																	
Depth (mbsf)	Core length (cm)	Section	Core image	Shipboard samples	Age	Sedimentary structures	Bioturbation intensity	Tectonic structures				Natural gamma radiation (cps)	GRA bulk density (g/cm <sup>3</sup> )	Magnetic susceptibility (x10 <sup>-5</sup> SI)			
								Drilling disturbance	Fracture type	Fold type	Deformation type	Veins	Bedding type	Dip (°)		WRMSL	SHMSL
														0 0.25 0.5 0.75 1	24 34 44 54 64	0.0 0.3 0.5 0.8 1.0	0 20 40 60
144																	

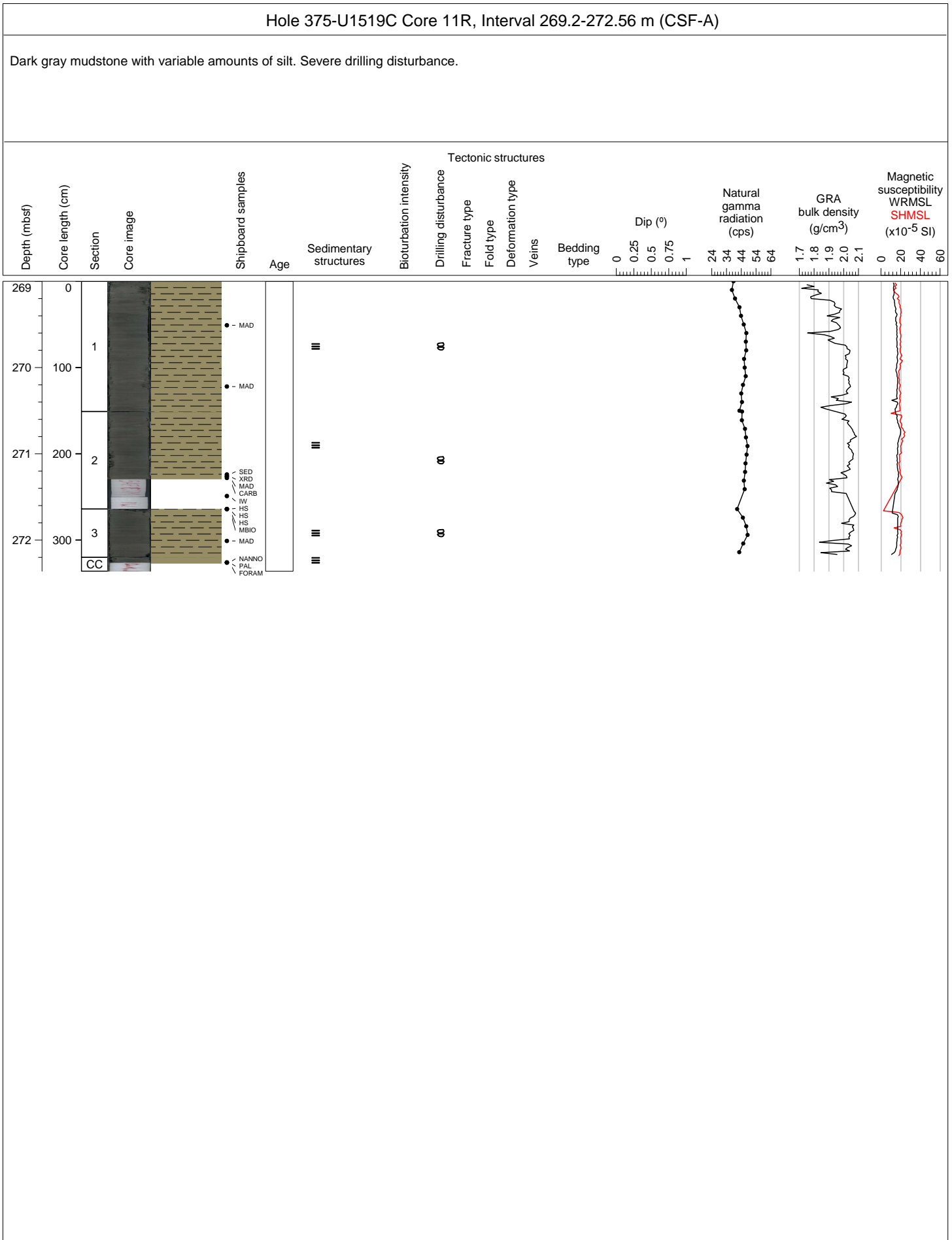


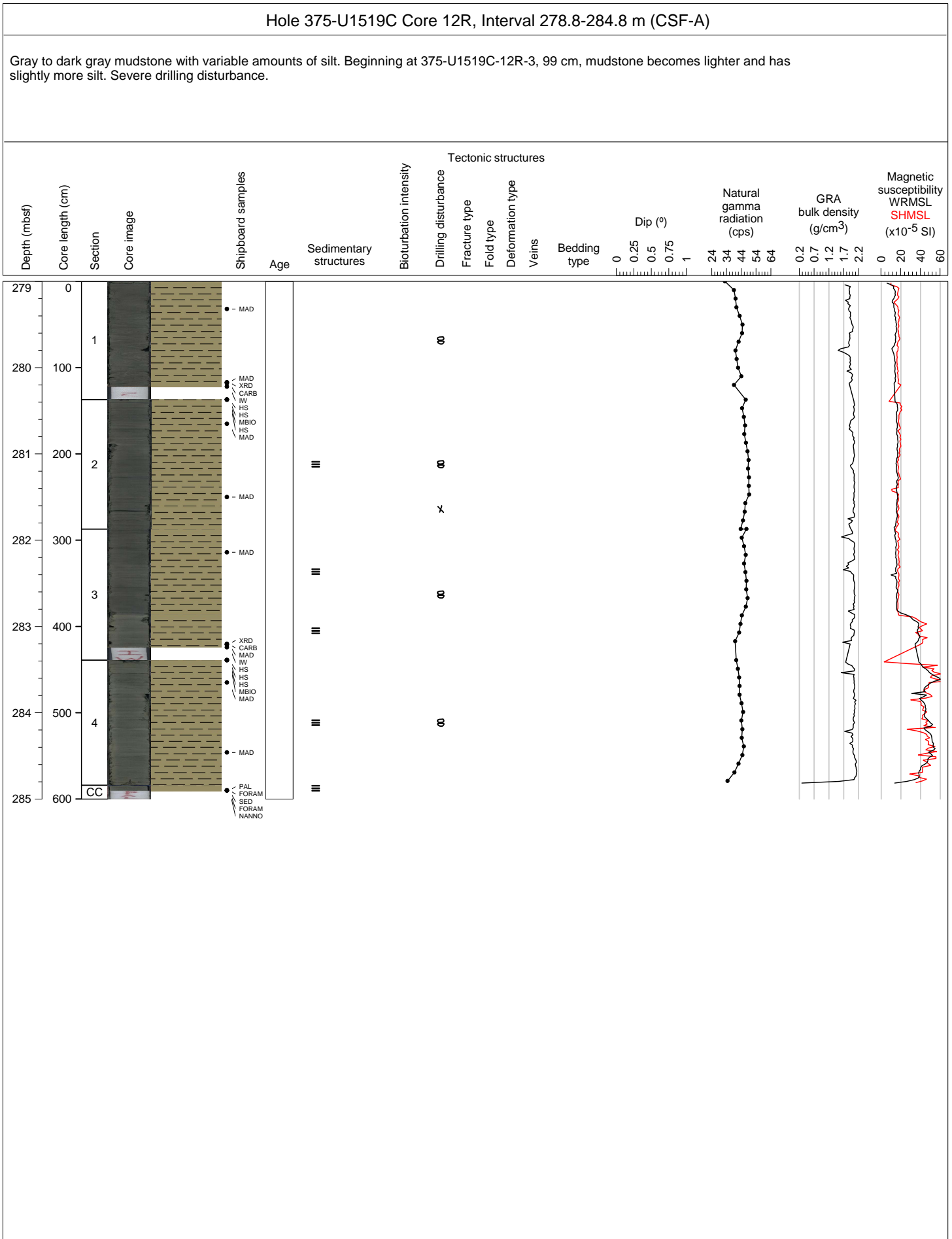


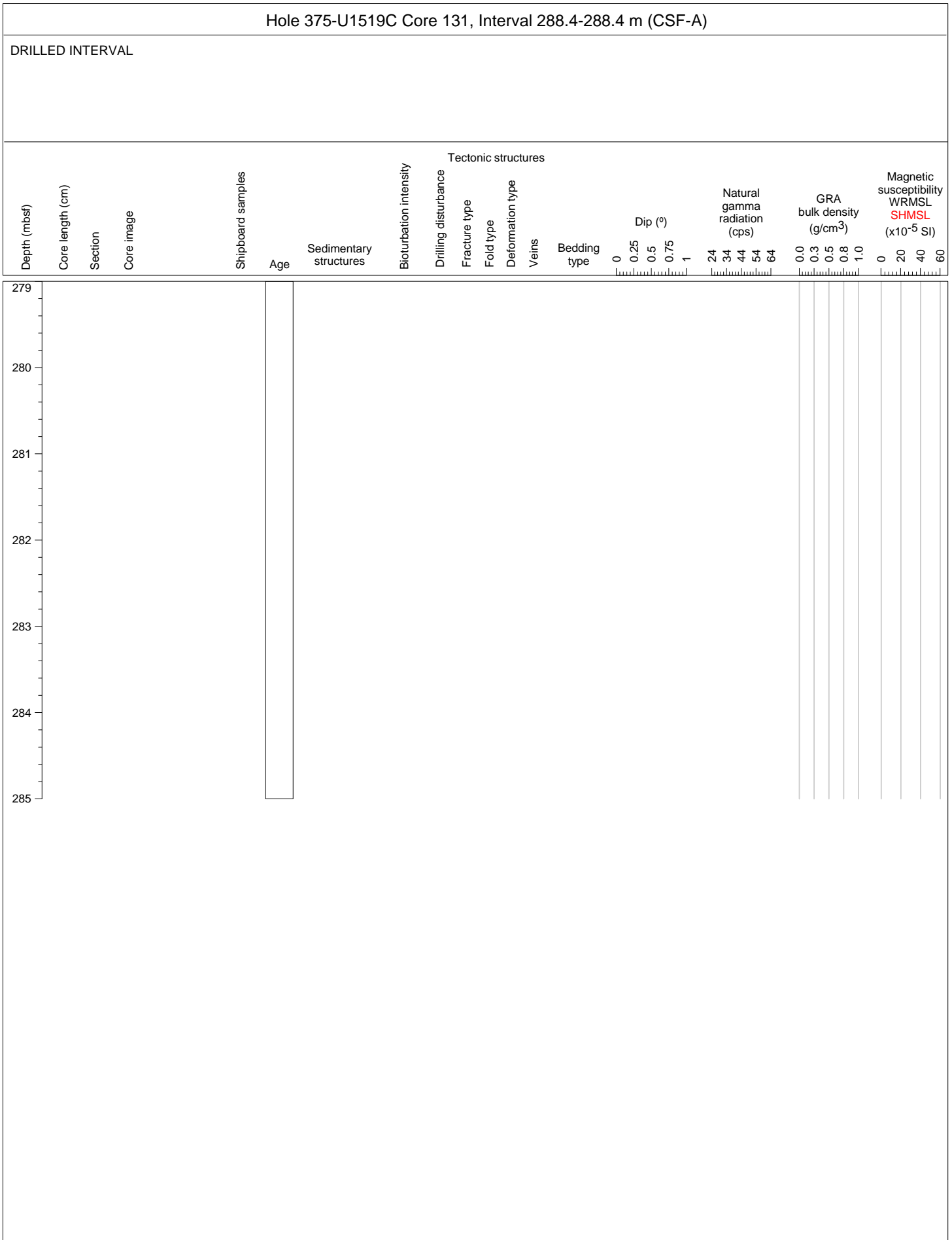
Hole 375-U1519C Core 10R, Interval 259.6-267.22 m (CSF-A)

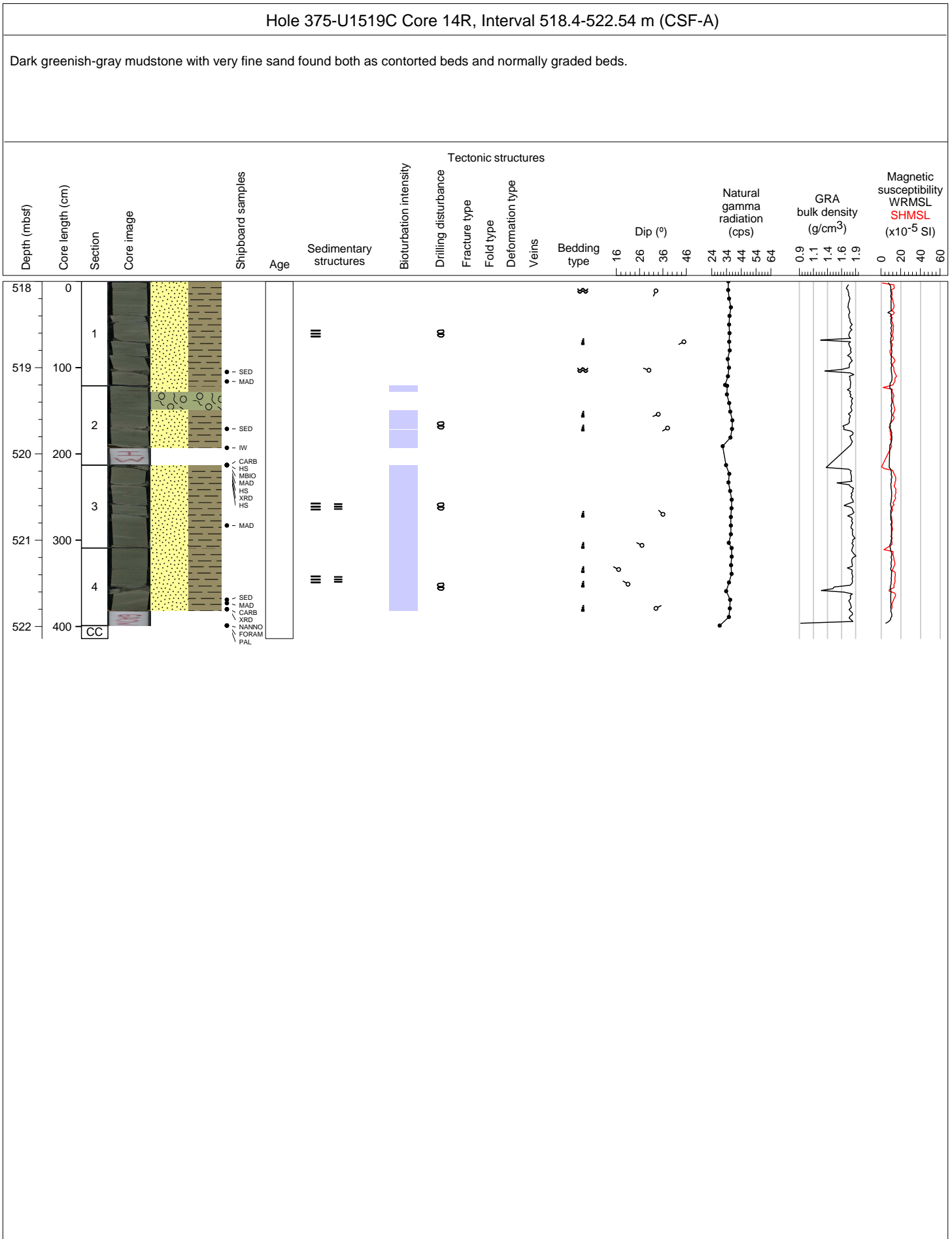
Dark gray mudstone with variable amounts of silt. Sand pods present in 375-U1519C-10R-1. Severe drilling disturbance.



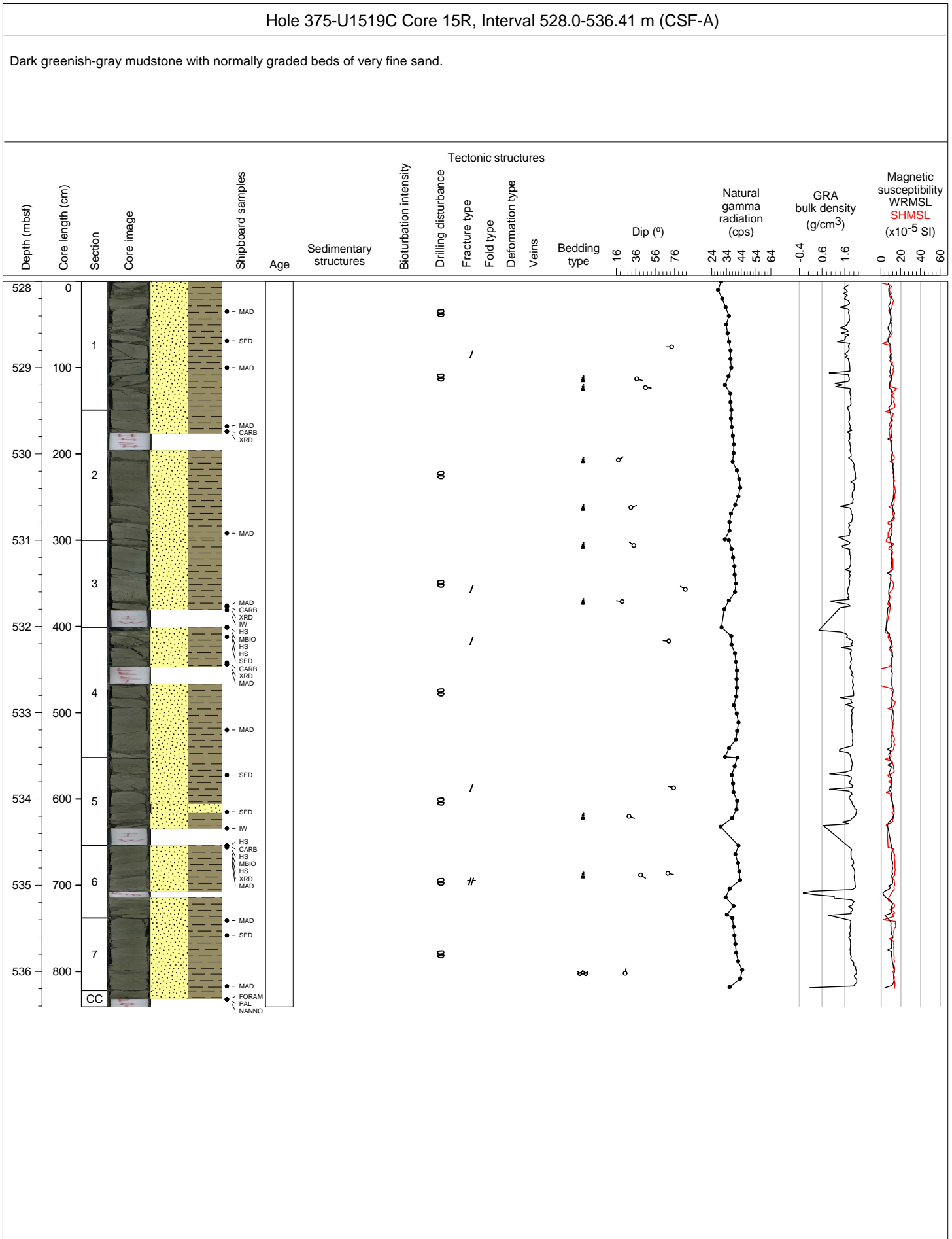


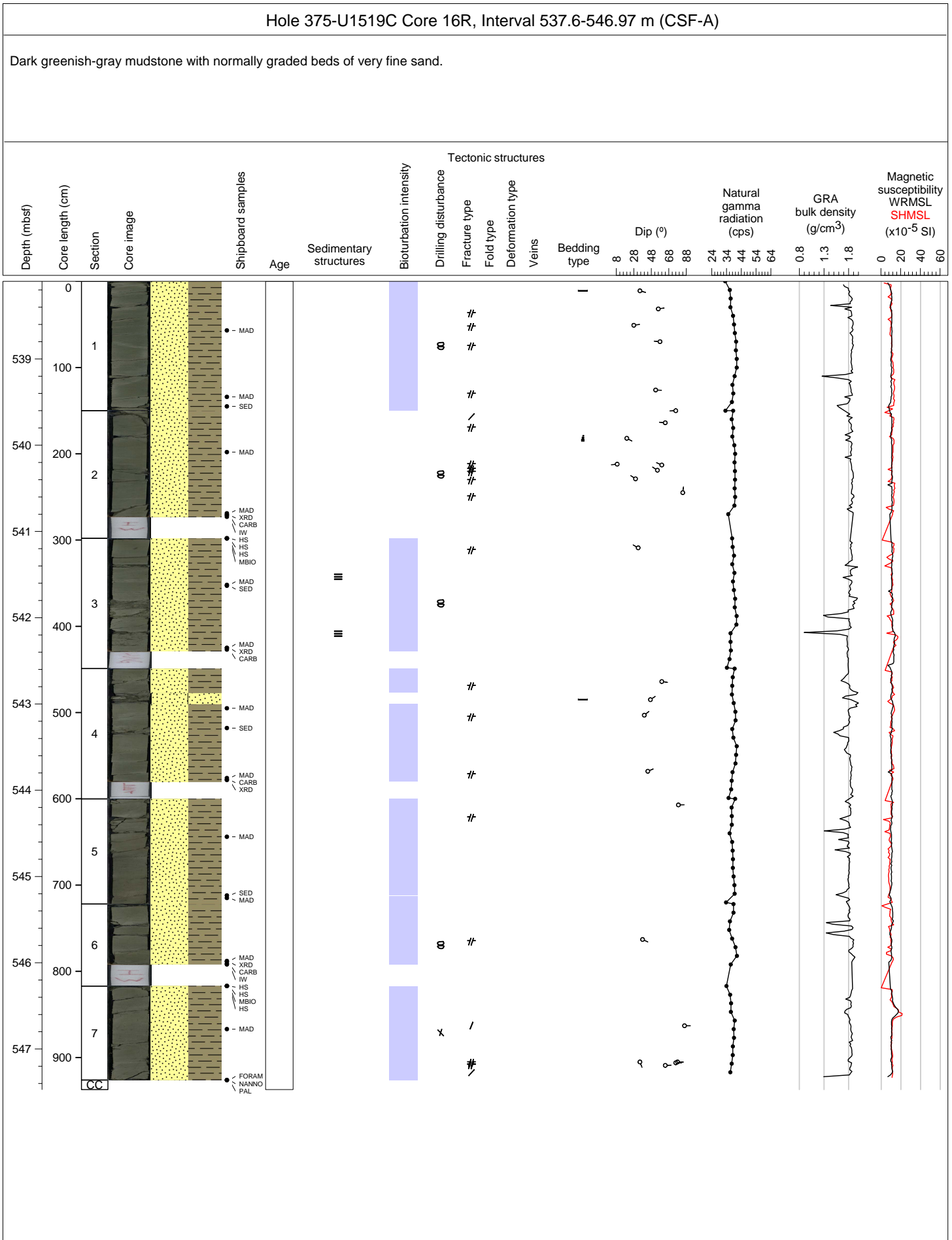






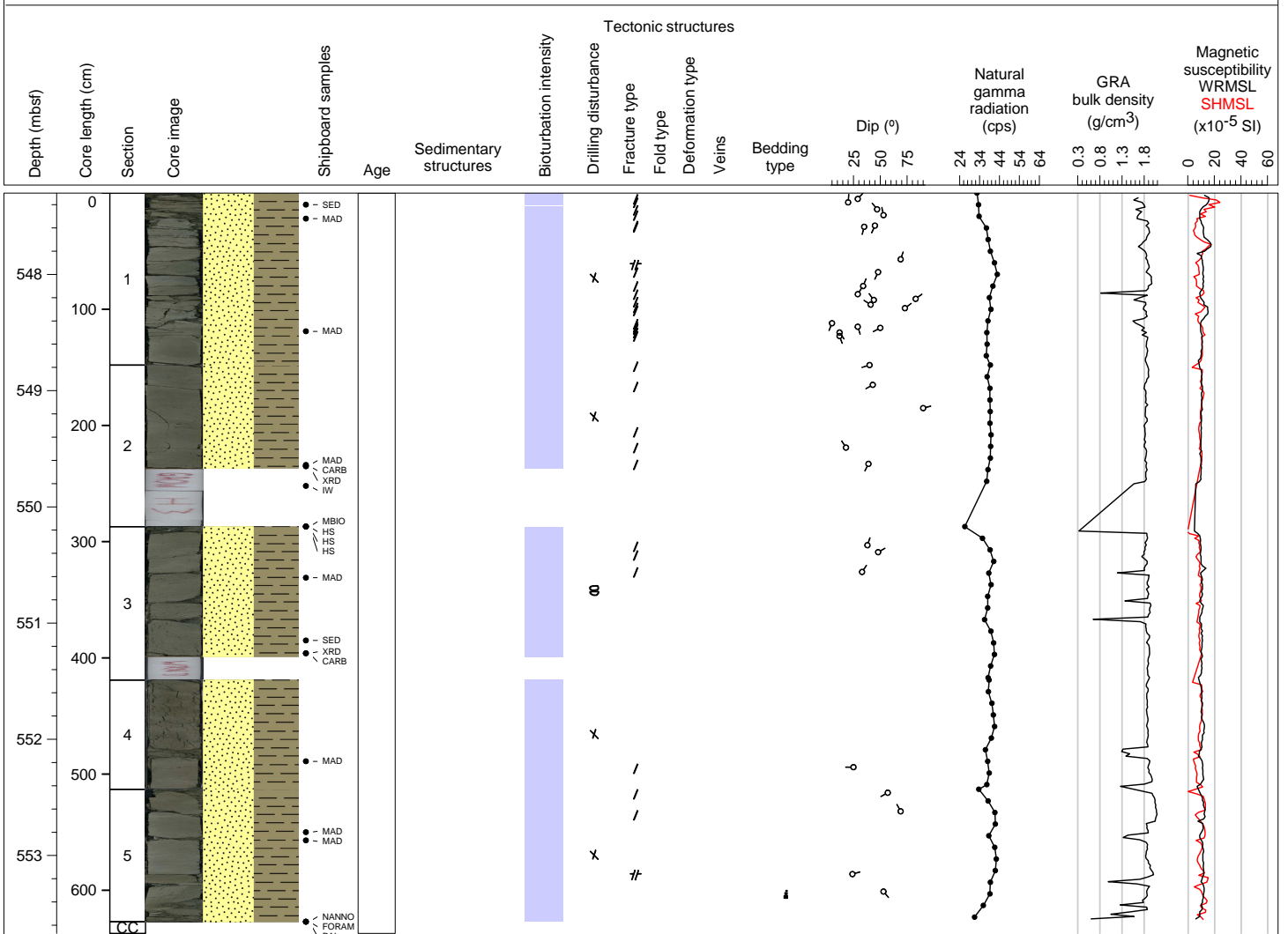






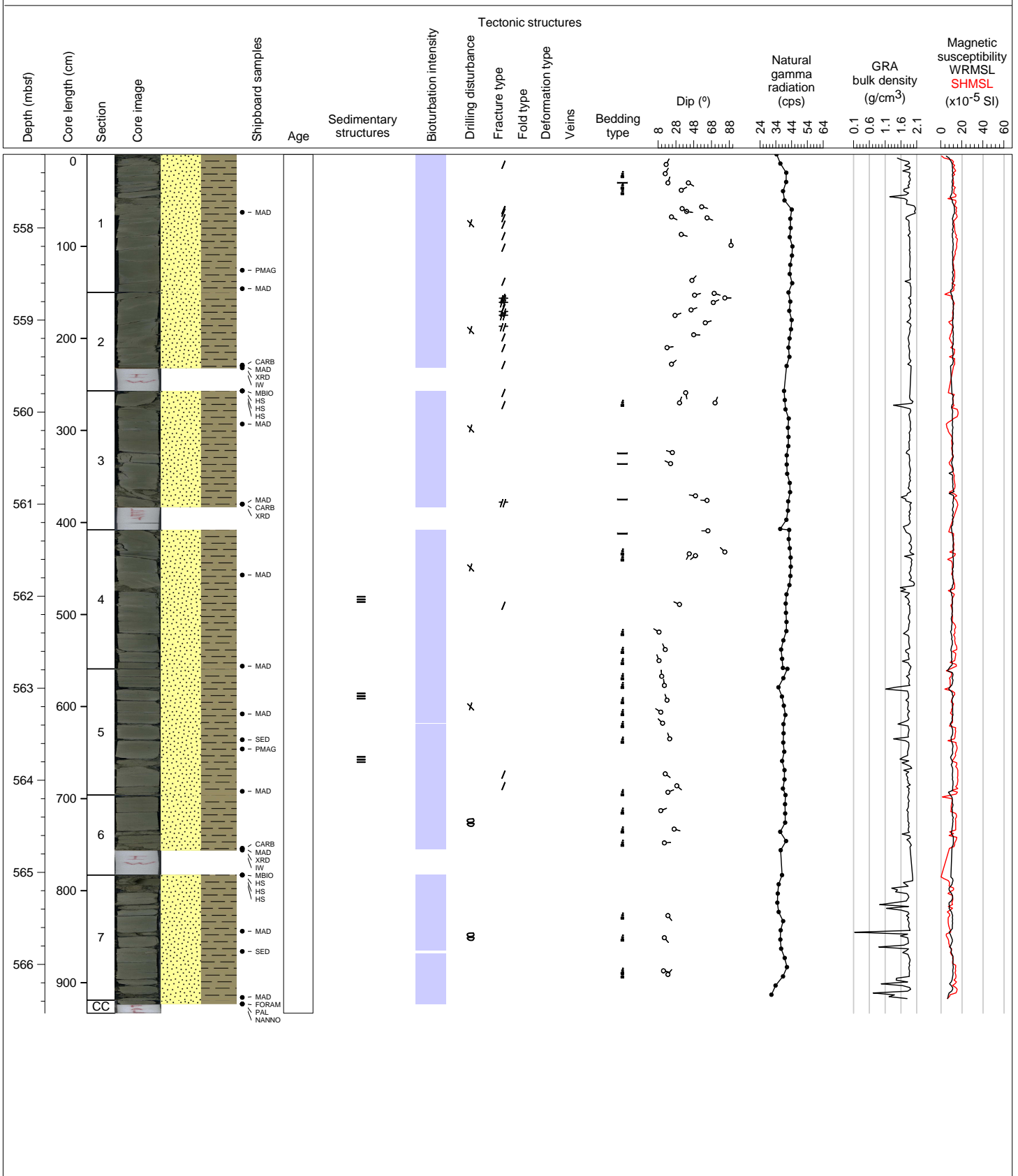
Hole 375-U1519C Core 17R, Interval 547.1-553.47 m (CSF-A)

Dark greenish-gray sandy mudstone with normally graded beds of fine sand.

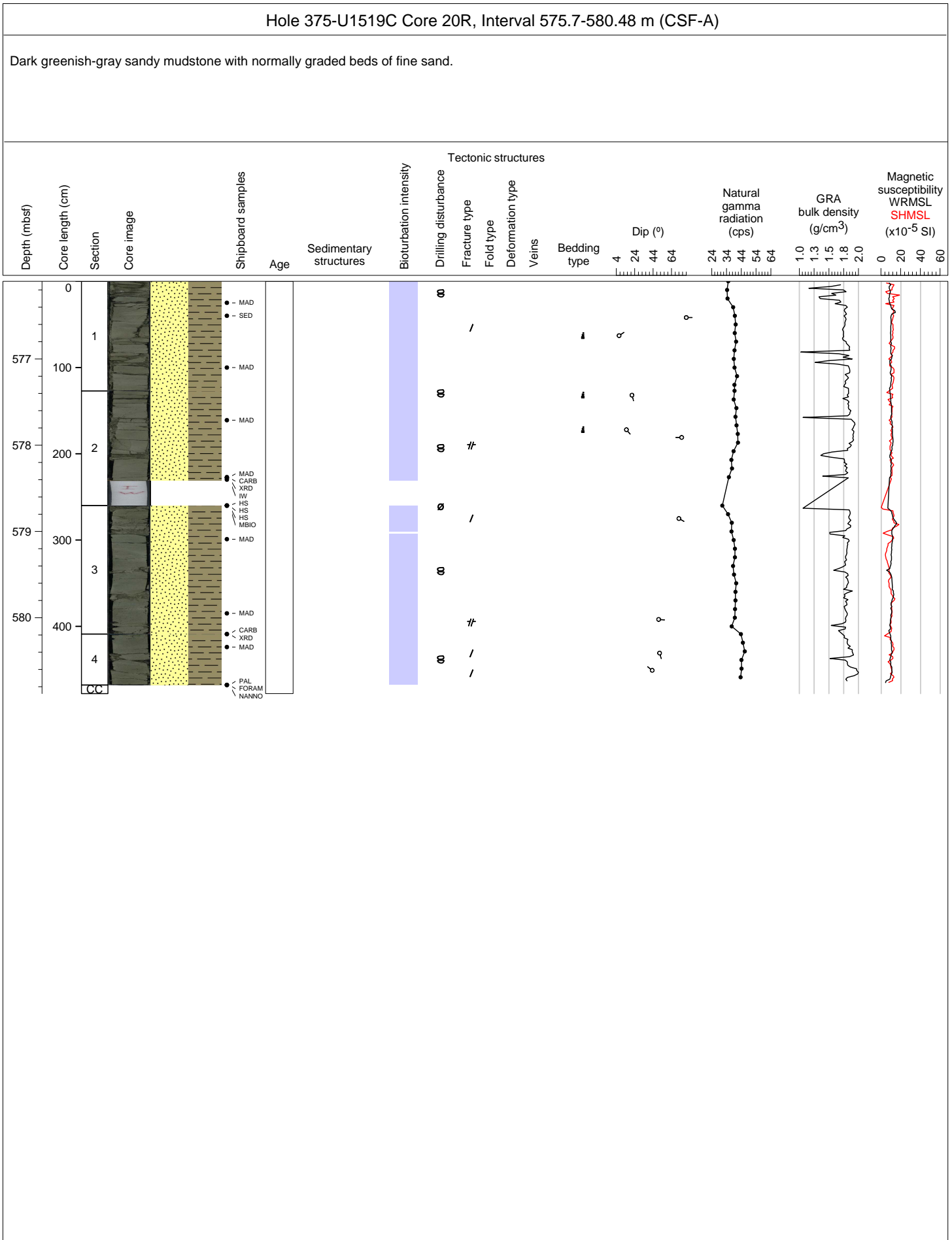


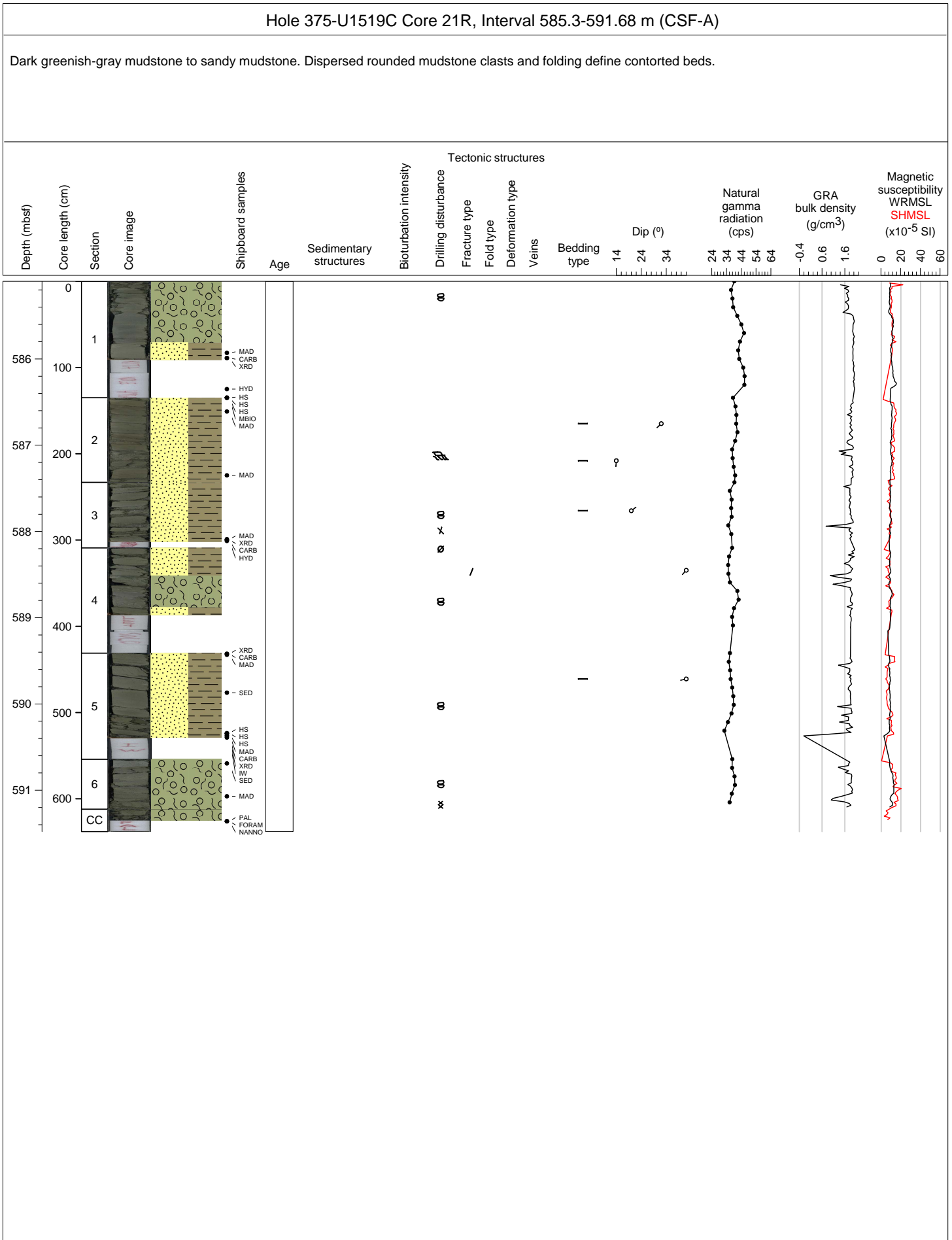
Hole 375-U1519C Core 18R, Interval 556.7-566.03 m (CSF-A)

Dark greenish-gray sandy mudstone with normally graded beds of fine sand.





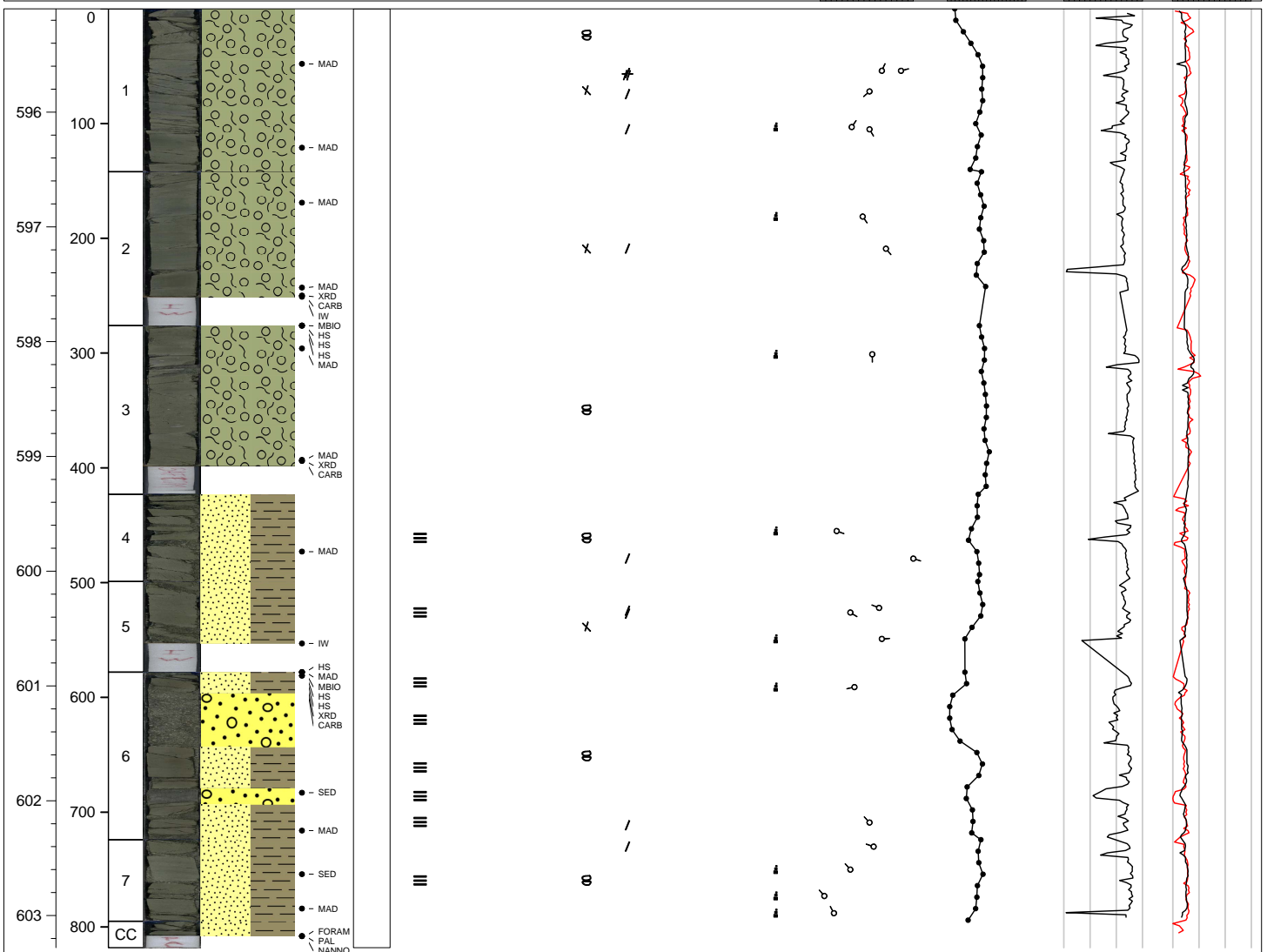




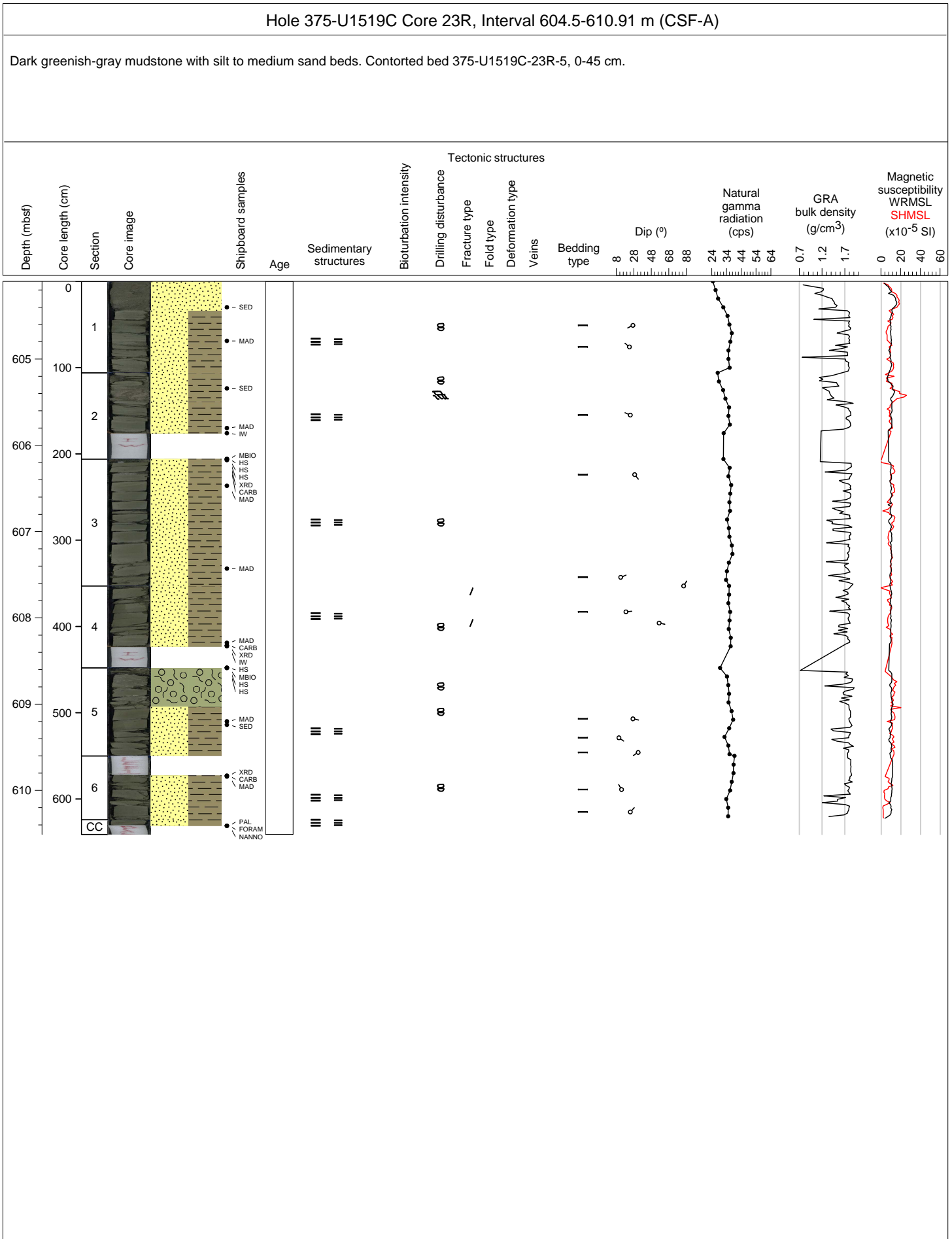
Hole 375-U1519C Core 22R, Interval 594.9-603.08 m (CSF-A)

Dark greenish-gray mudstone to sandy mudstone. Contorted beds until bottom of 375-U1519C-22R-3. Below this, alternating mudstone and fine to very coarse sandstone layers.

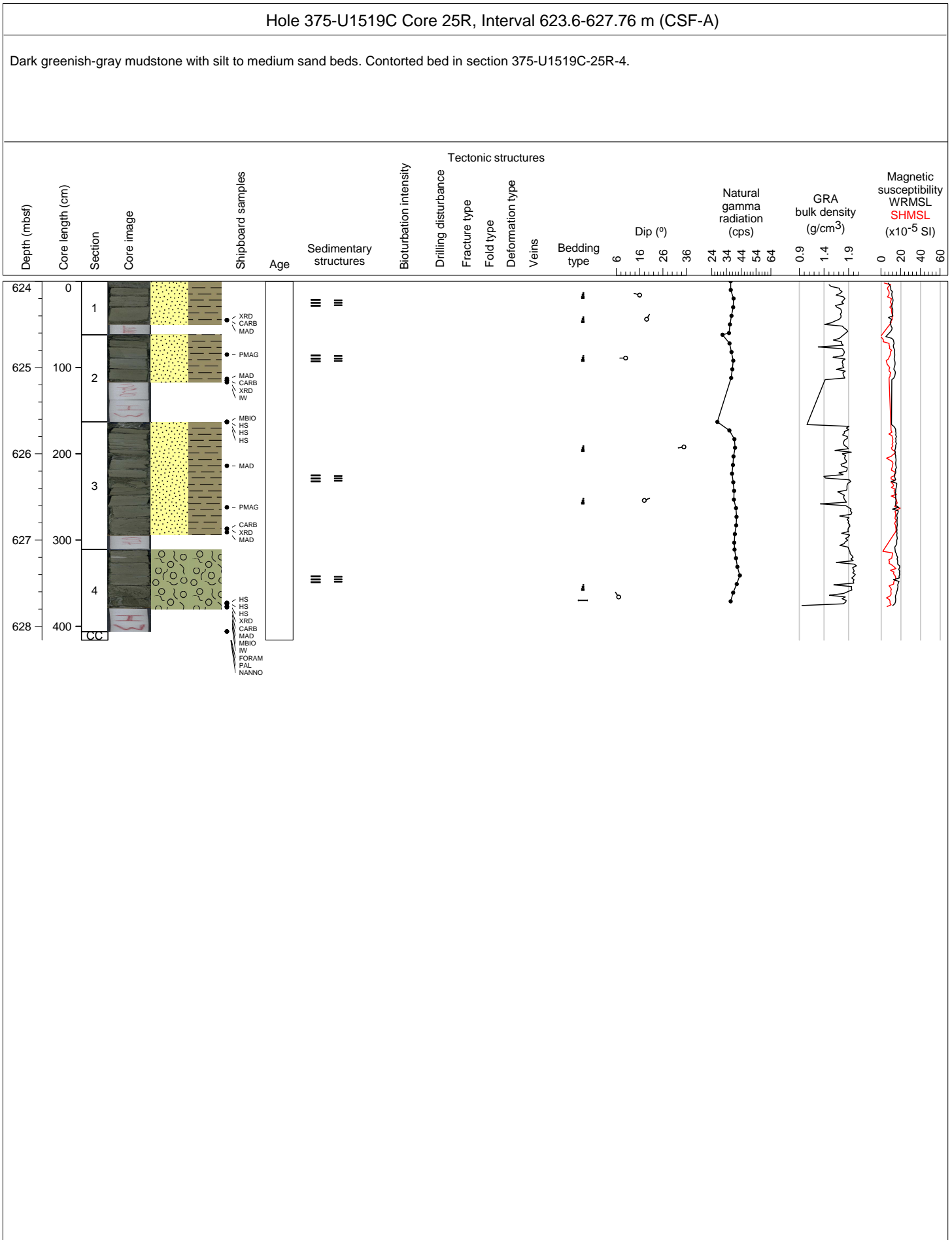
Depth (mbsf)	Core length (cm)	Section	Core image	Shipboard samples	Age	Sedimentary structures	Bioturbation intensity	Tectonic structures					Natural gamma radiation (cps)	GRA bulk density (g/cm <sup>3</sup> )				Magnetic susceptibility (x10 <sup>-5</sup> SI)	
								Drilling disturbance	Fracture type	Fold type	Deformation type	Veins		Bedding type	12	32	52	72	0.7

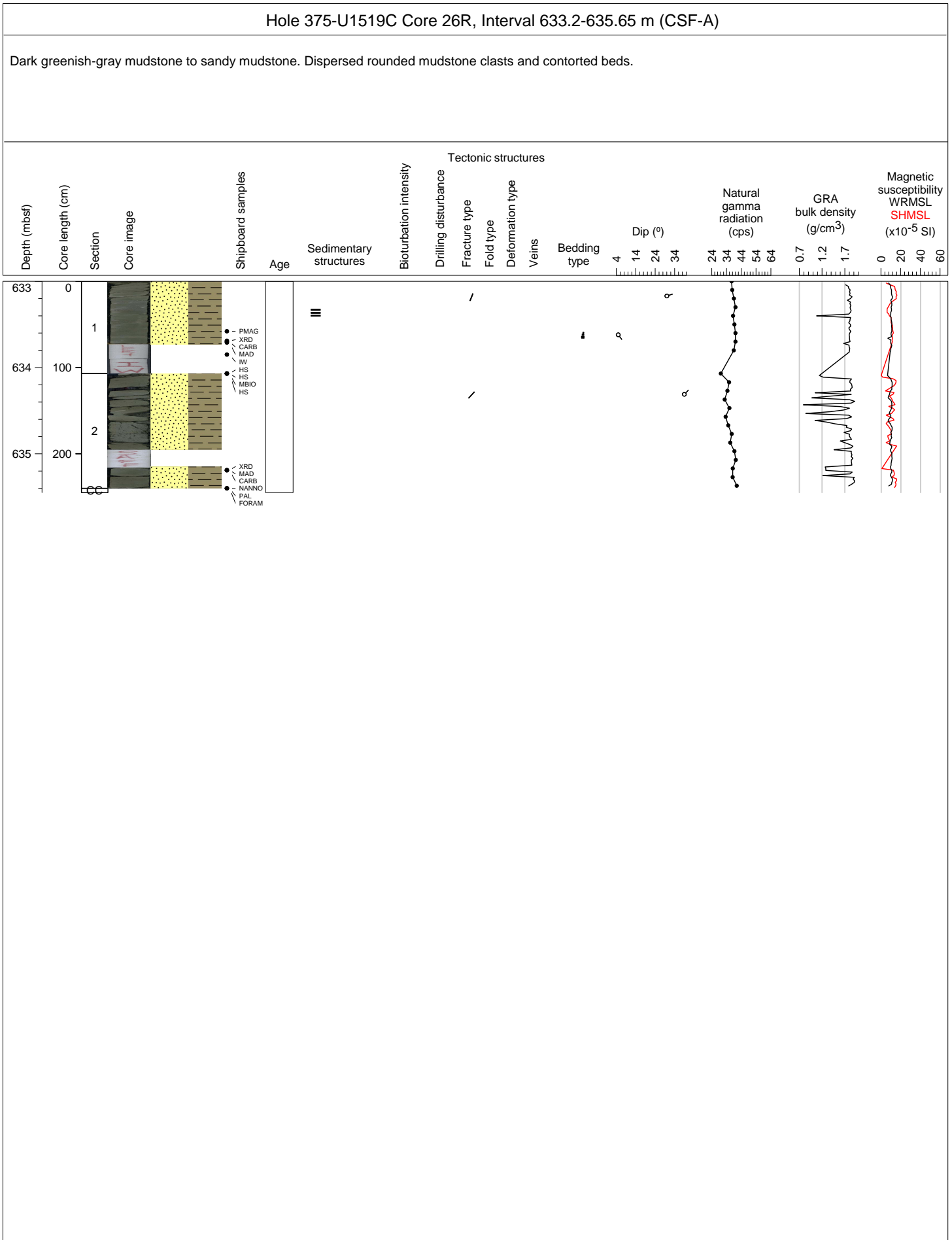


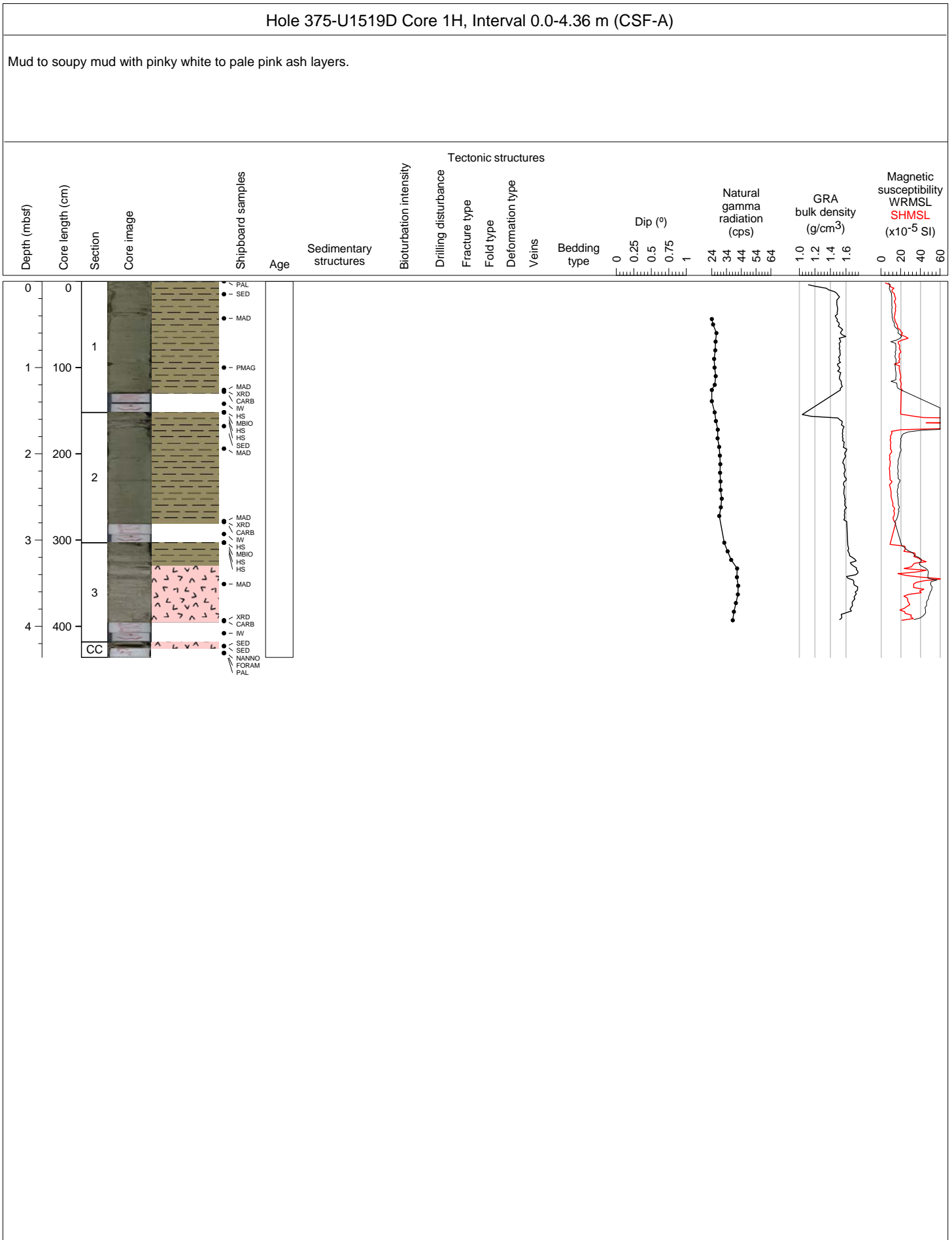






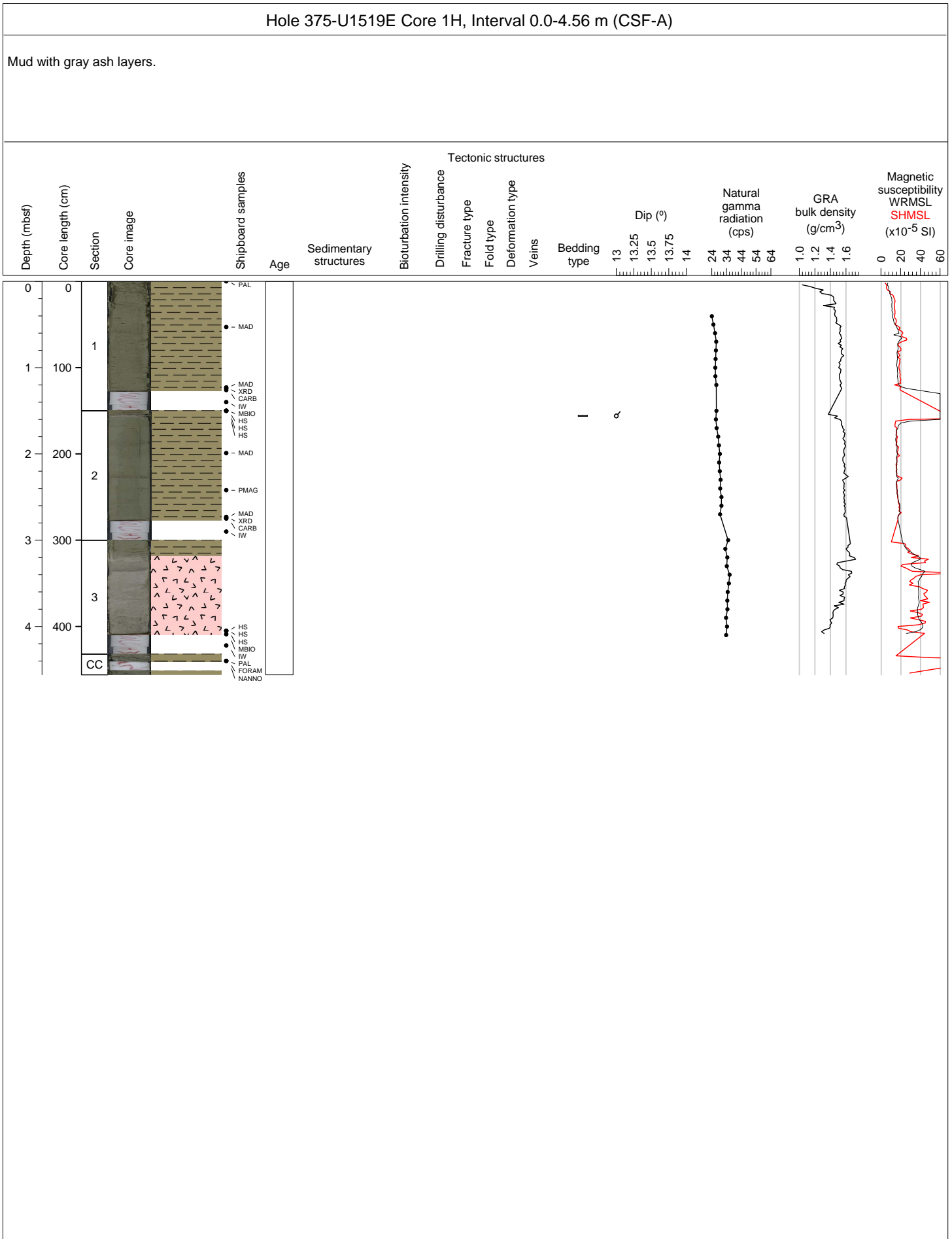




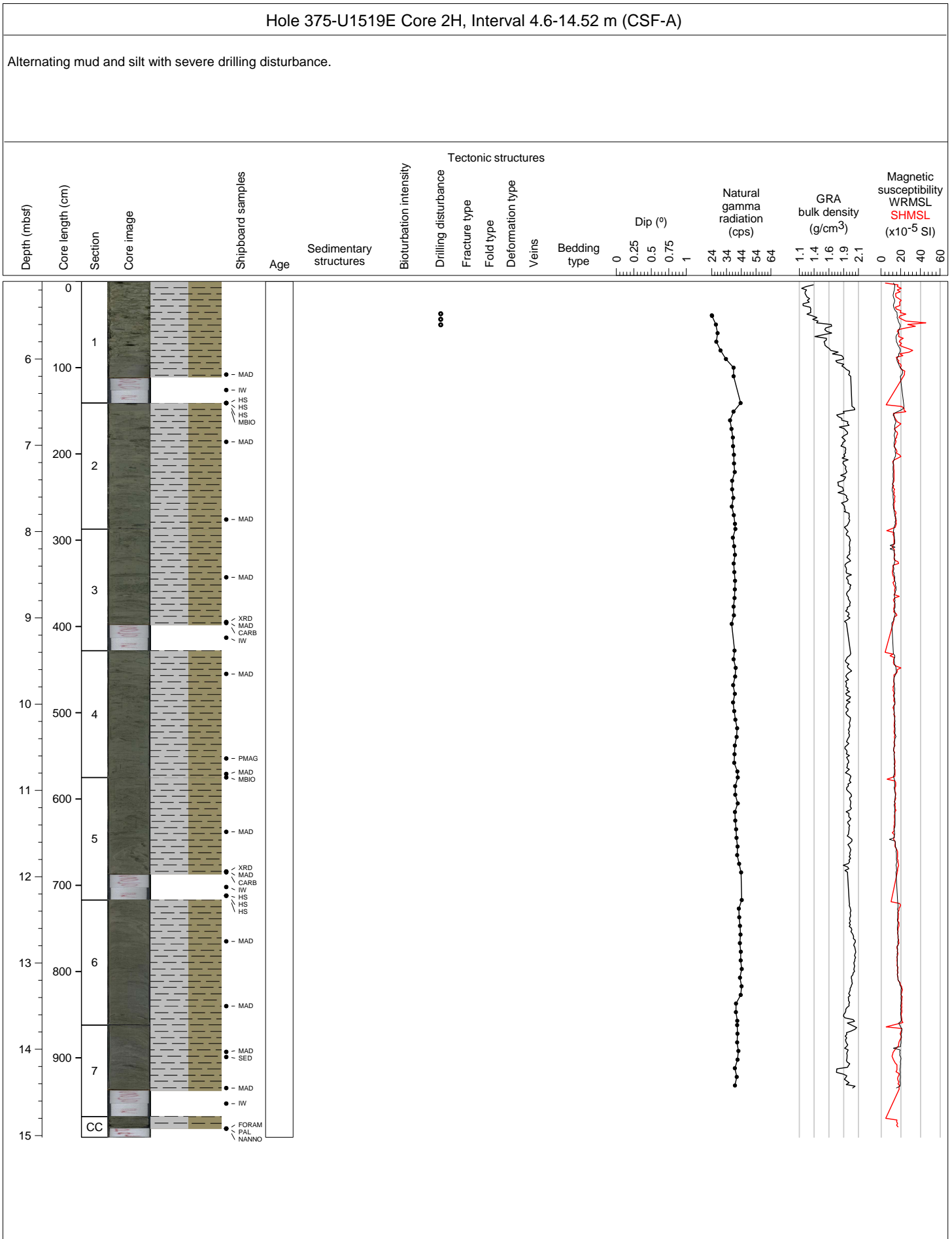






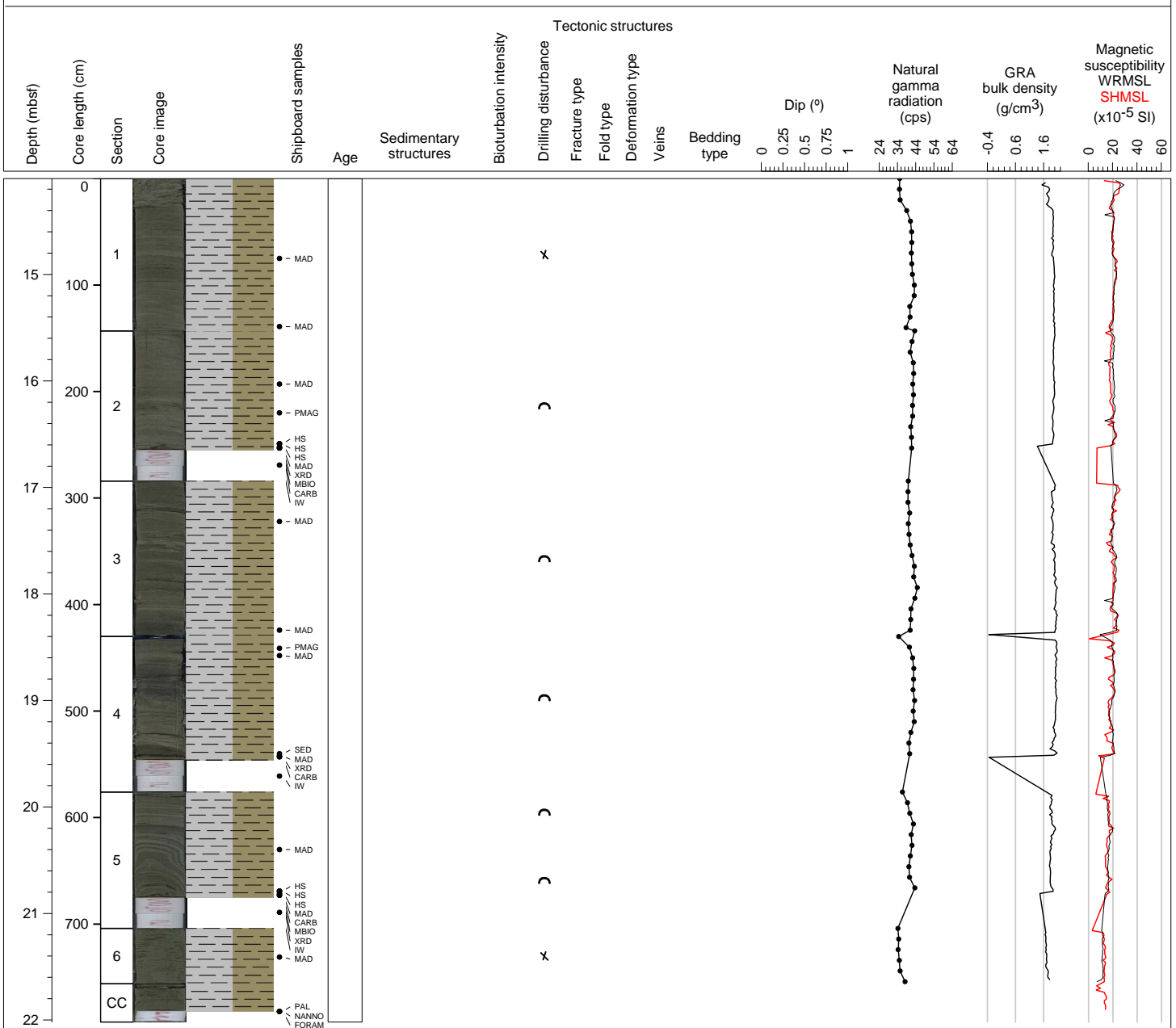






Hole 375-U1519E Core 3H, Interval 14.1-22.02 m (CSF-A)

Alternating mud and silt with severe drilling disturbance.



Hole 375-U1519E Core 4H, Interval 21.9-31.28 m (CSF-A)

Alternating mud and silt with severe drilling disturbance.

