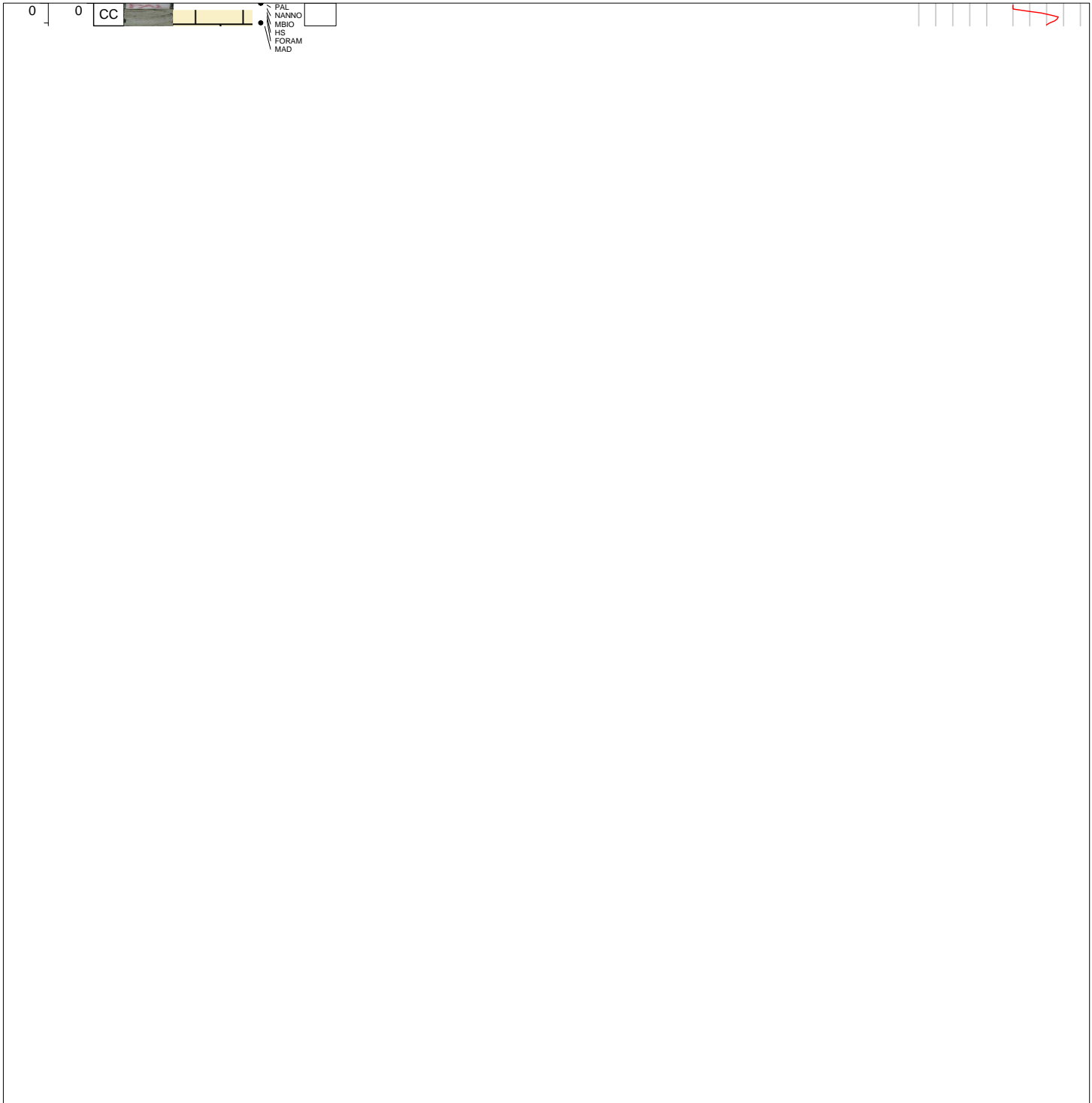


Hole 375-U1526A Core 1R, Interval 0.0-0.23 m (CSF-A)

Nannofossil rich, light green calcareous mudstone.

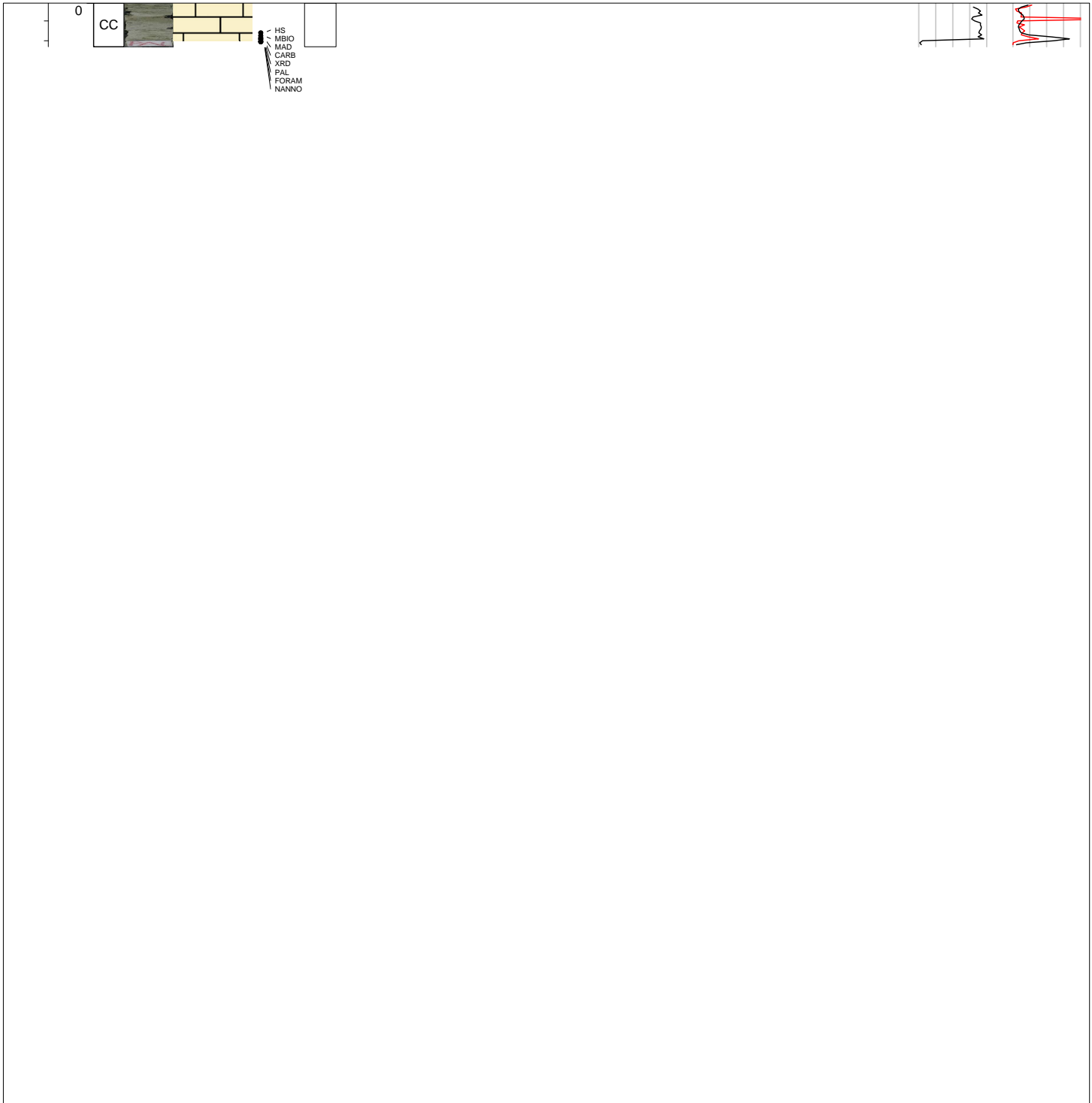
Depth (mbsf)	Core length (cm)	Section	Core image	Shipboard samples	Age	Sedimentary structures	Bioturbation intensity	Drilling disturbance	Fracture type	Fold type	Deformation type	Veins	Bedding type	Dip (°)	Natural gamma radiation (cps)	GRA bulk density (g/cm ³)	Magnetic susceptibility (x10 ⁻⁵ SI)
--------------	------------------	---------	------------	-------------------	-----	------------------------	------------------------	----------------------	---------------	-----------	------------------	-------	--------------	---------	-------------------------------	---------------------------------------	--



Hole 375-U1526A Core 2R, Interval 9.7-10.14 m (CSF-A)

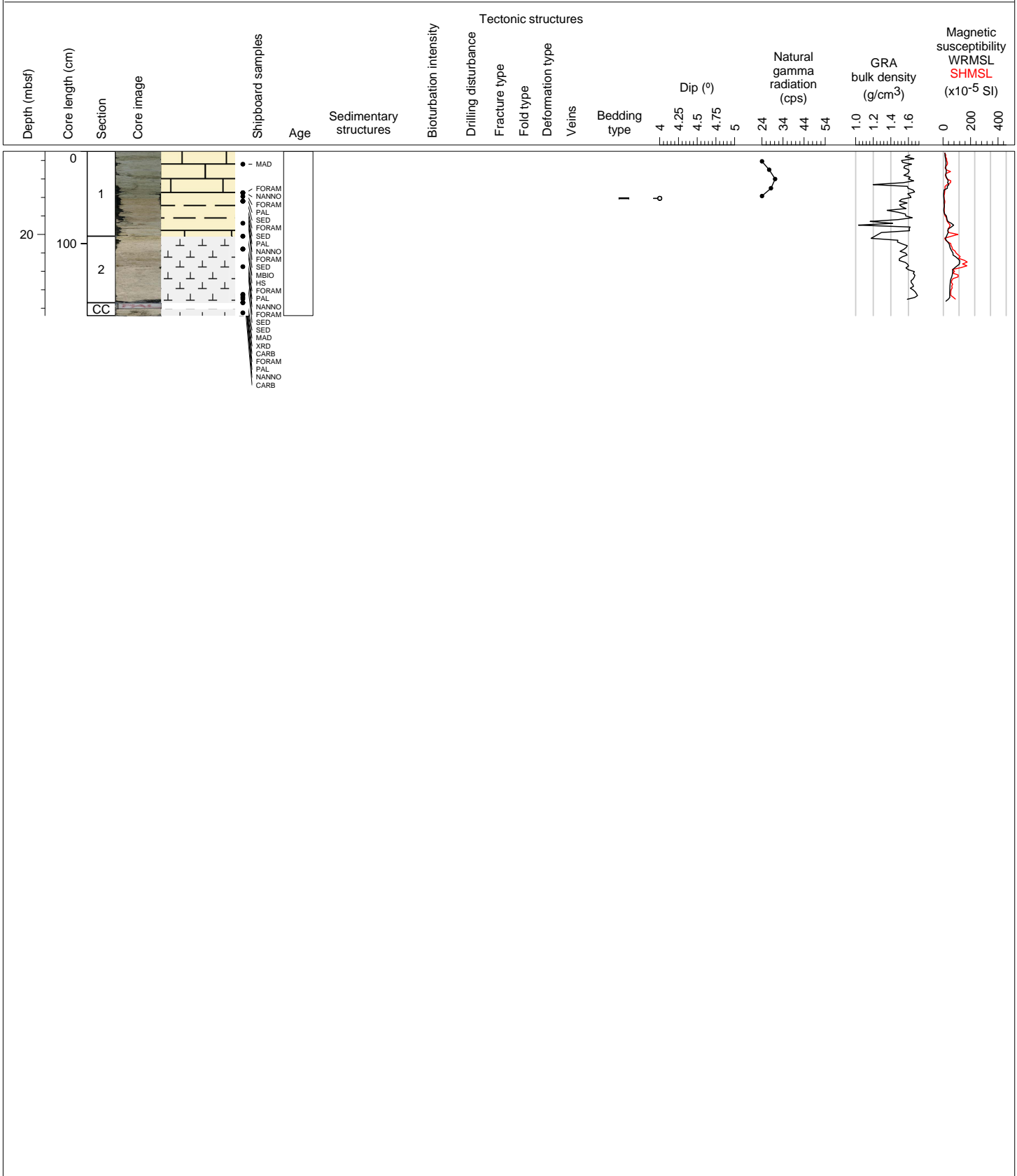
Nannofossil rich, light green calcareous mudstone.

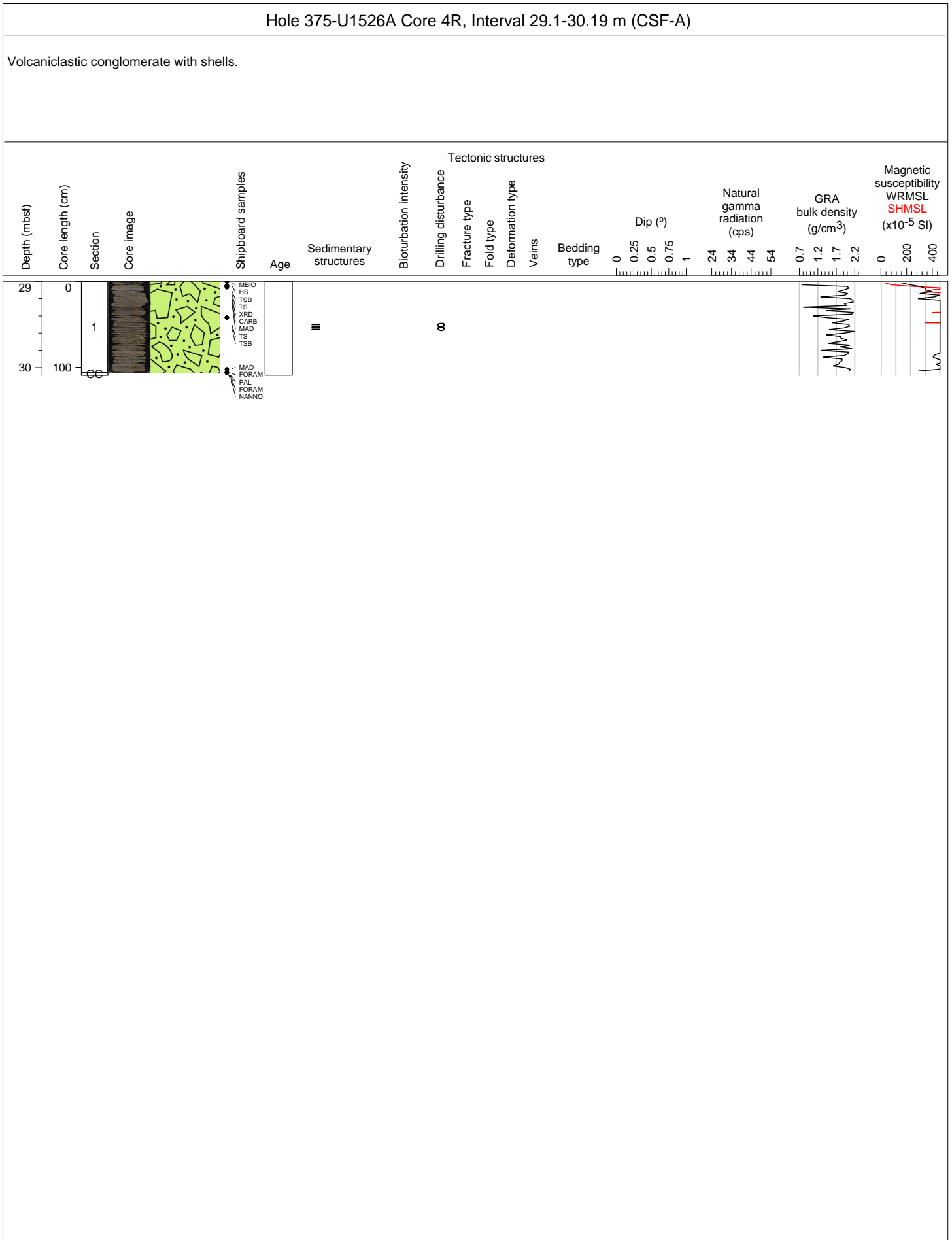
Depth (mbsf)	Core length (cm)	Section	Core image	Shipboard samples	Age	Sedimentary structures	Bioturbation intensity	Drilling disturbance	Fracture type	Fold type	Deformation type	Veins	Bedding type	Dip (°)	Natural gamma radiation (cps)	GRA bulk density (g/cm ³)	Magnetic susceptibility (x10 ⁻⁵ SI)
--------------	------------------	---------	------------	-------------------	-----	------------------------	------------------------	----------------------	---------------	-----------	------------------	-------	--------------	---------	-------------------------------	---------------------------------------	--



Hole 375-U1526A Core 3R, Interval 19.4-21.18 m (CSF-A)

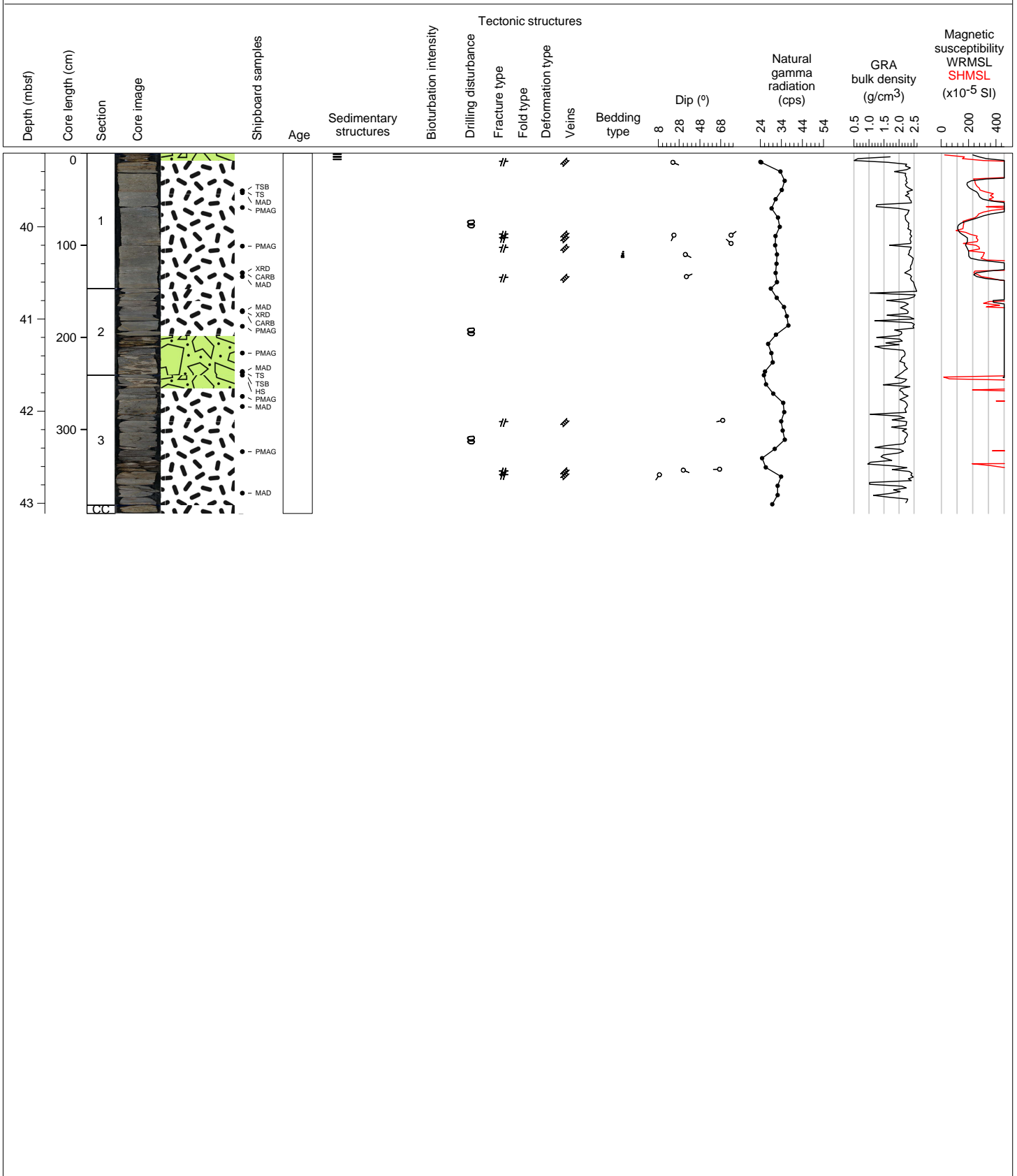
Light pink to whitish nannofossil-rich ooze.





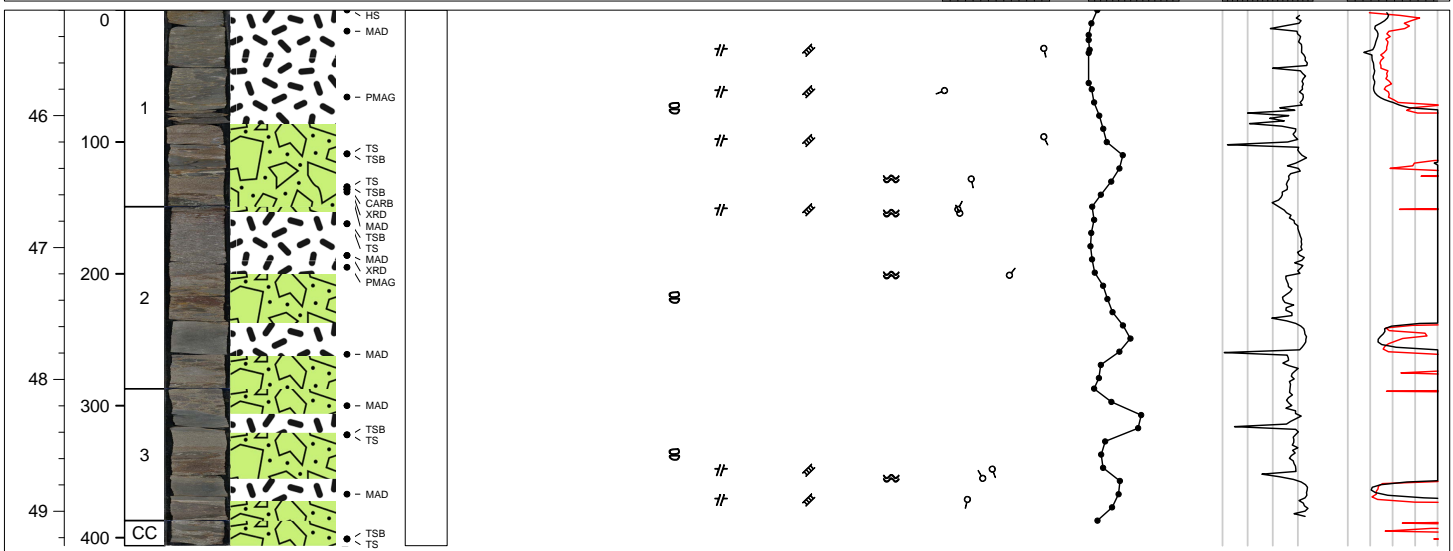
Hole 375-U1526A Core 5R, Interval 38.8-42.71 m (CSF-A)

Basalt with varying amounts of vesicularity. Some intervals of volcanoclastic conglomerate.



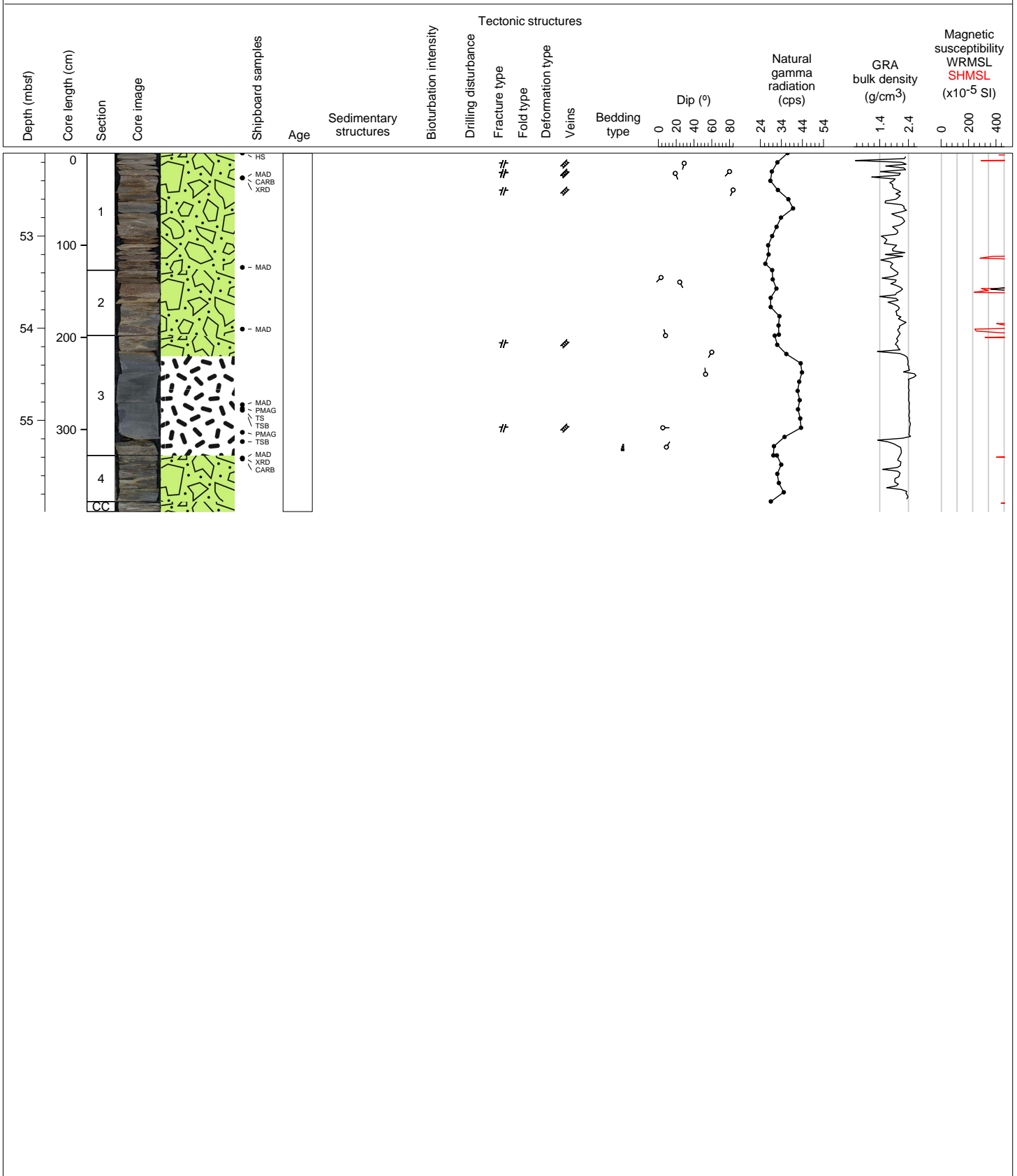
Hole 375-U1526A Core 6R, Interval 44.8-48.86 m (CSF-A)

Vesicular basalt with white phenocrysts underlain by volcaniclastic conglomerate with shells.



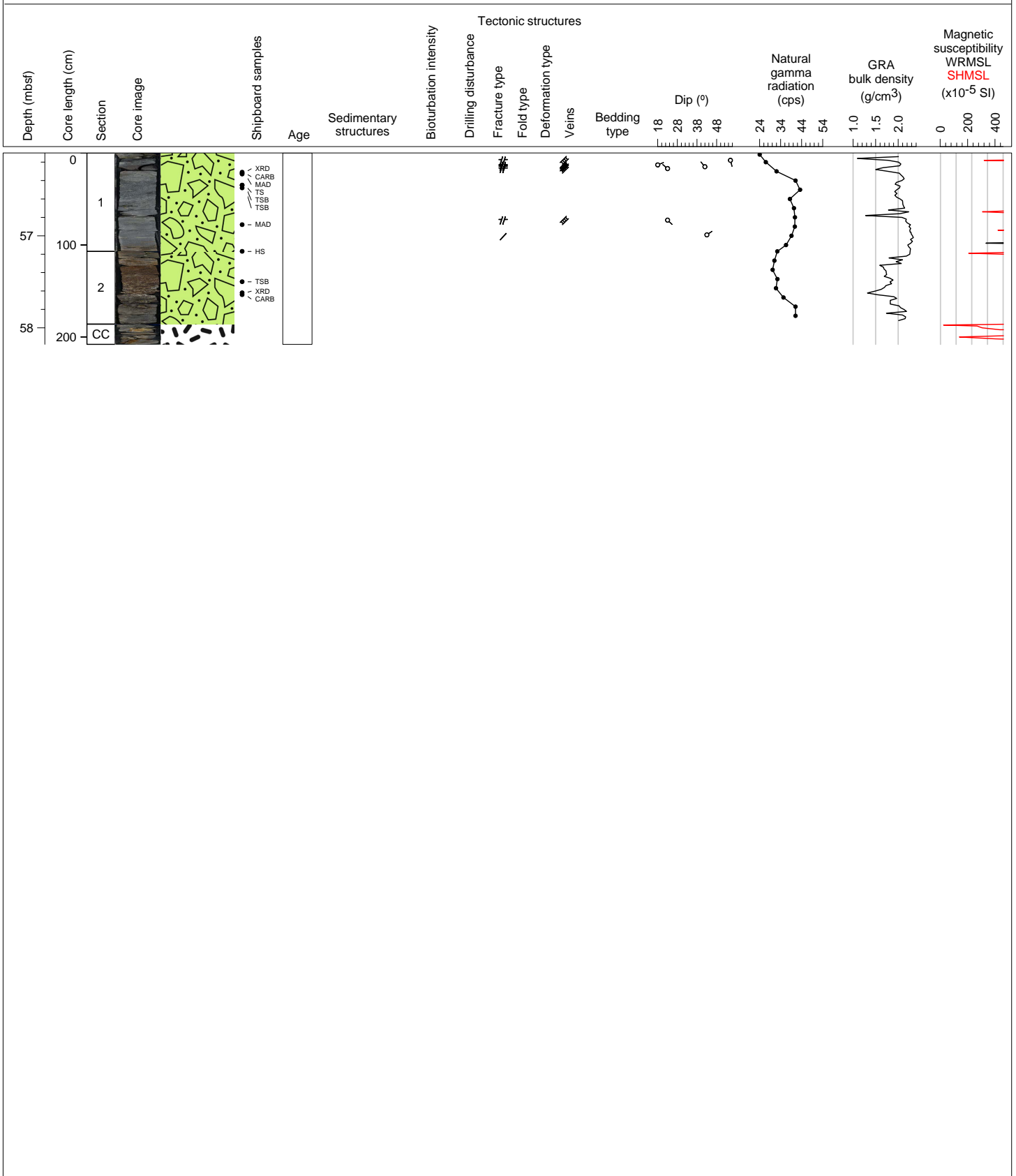
Hole 375-U1526A Core 8R, Interval 51.9-55.79 m (CSF-A)

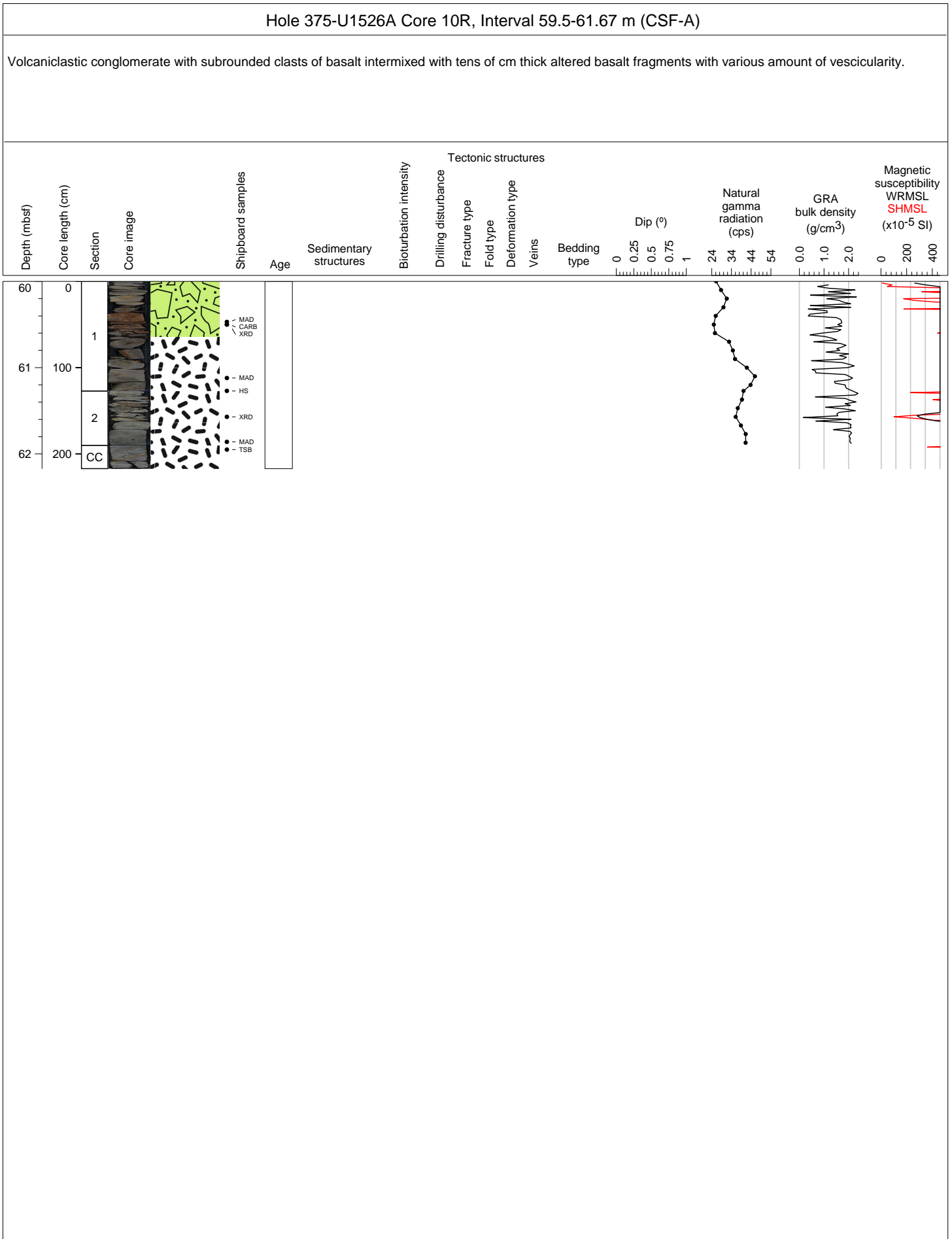
Volcaniclastic conglomerate with subrounded clasts of basalts intermixed with tens of cm thick basalt fragments with various amount of vesicularity.

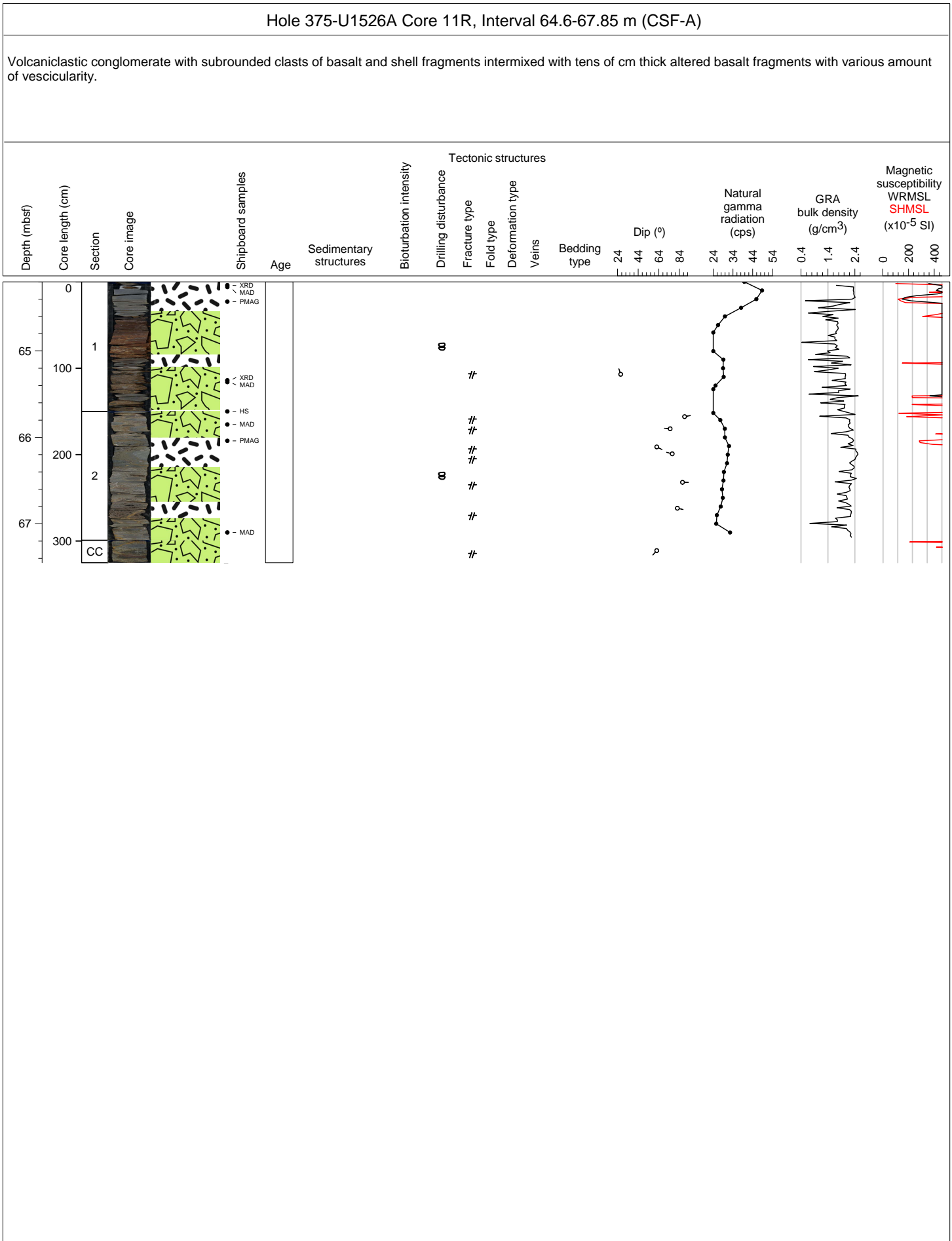


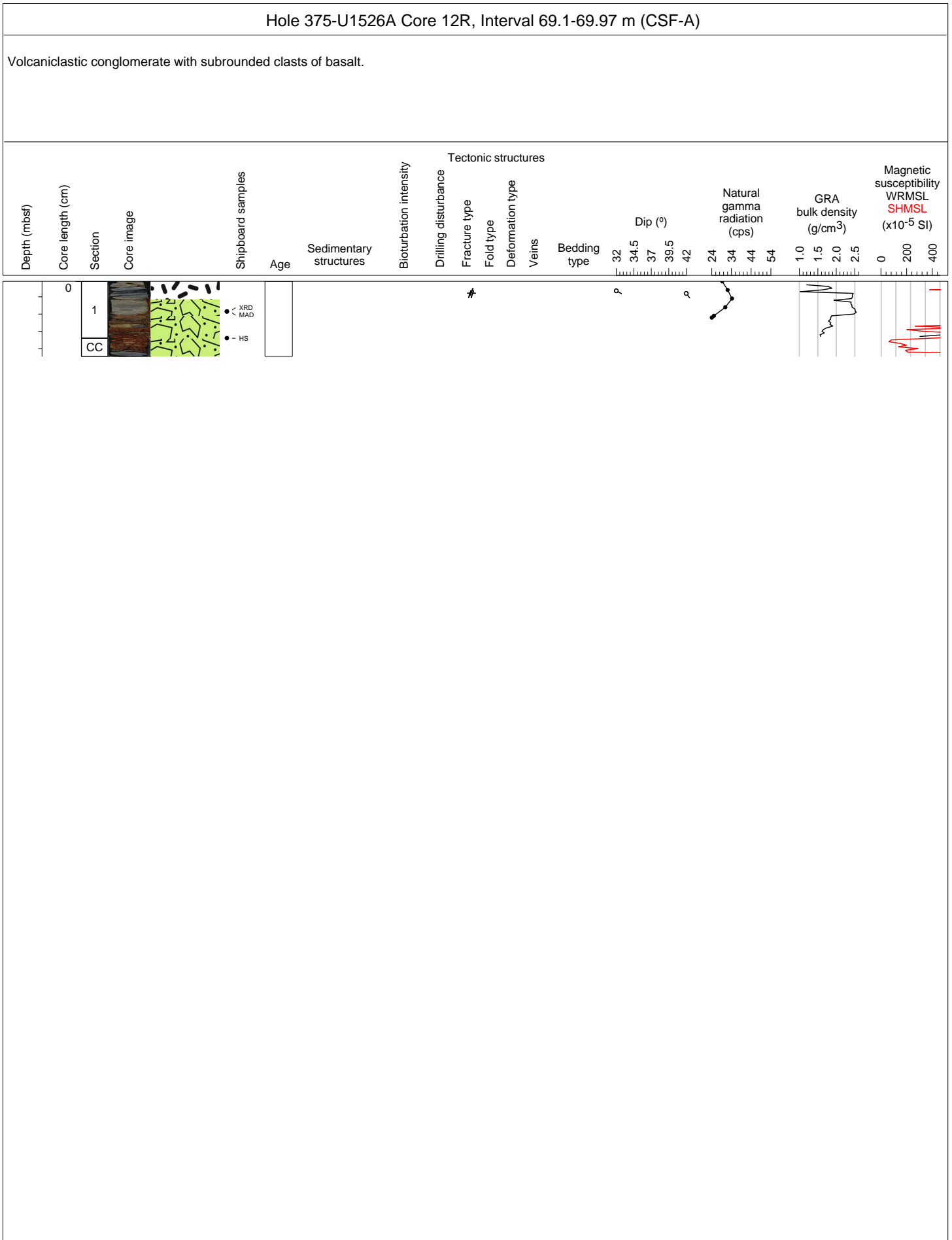
Hole 375-U1526A Core 9R, Interval 55.8-57.88 m (CSF-A)

Volcaniclastic conglomerate with subrounded clasts of basalt intermixed with tens of cm thick basalt fragments with various amount of vesicularity.



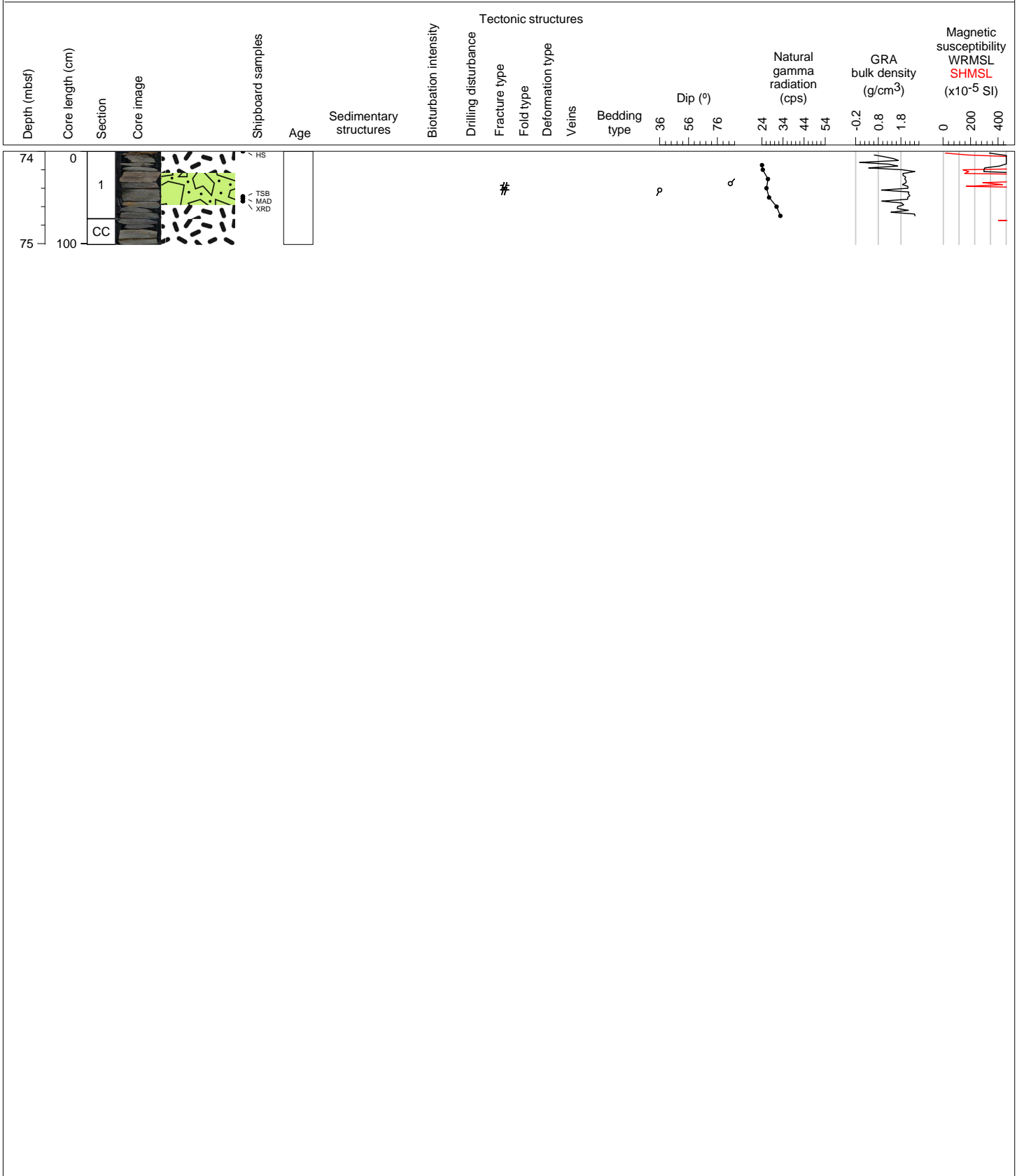


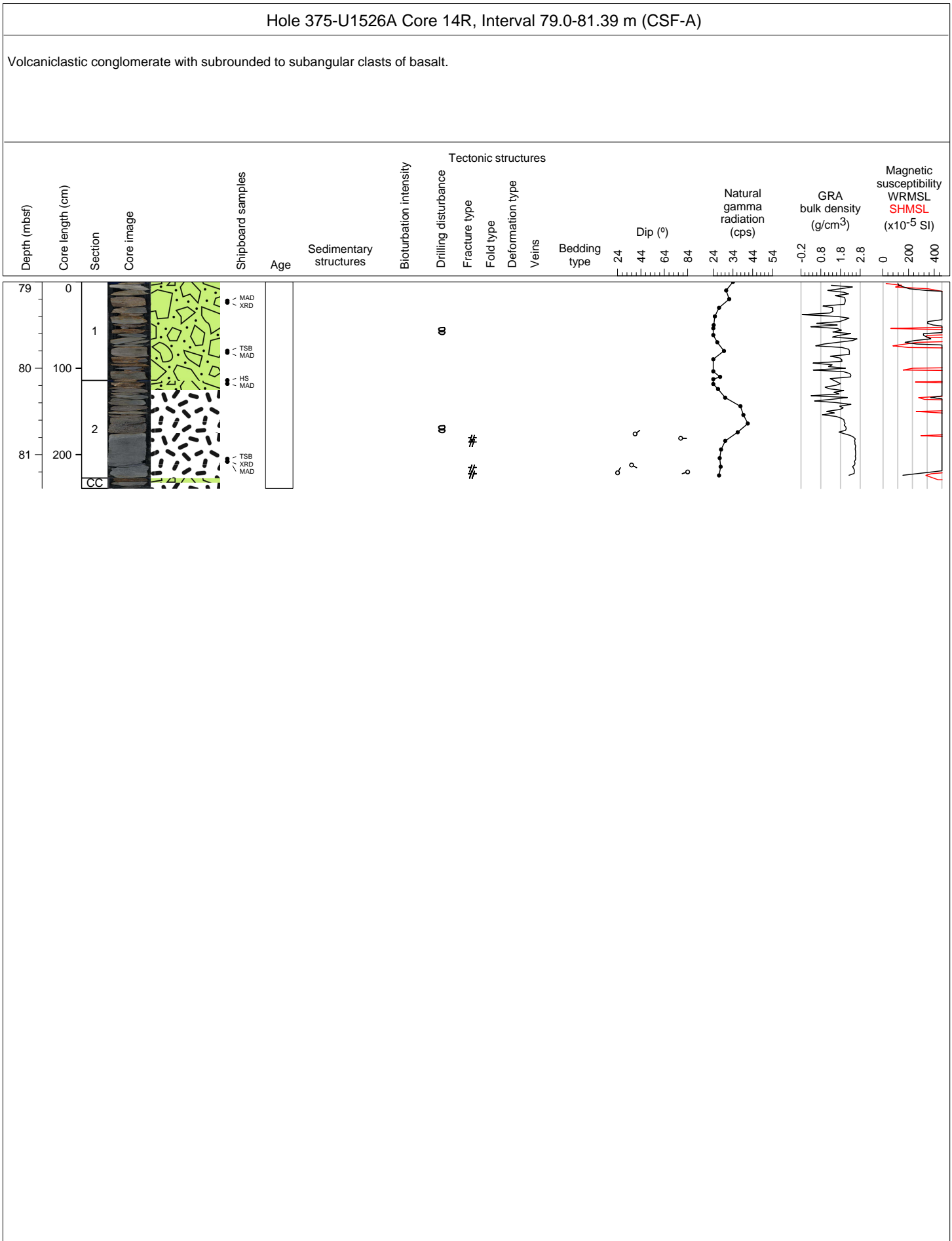


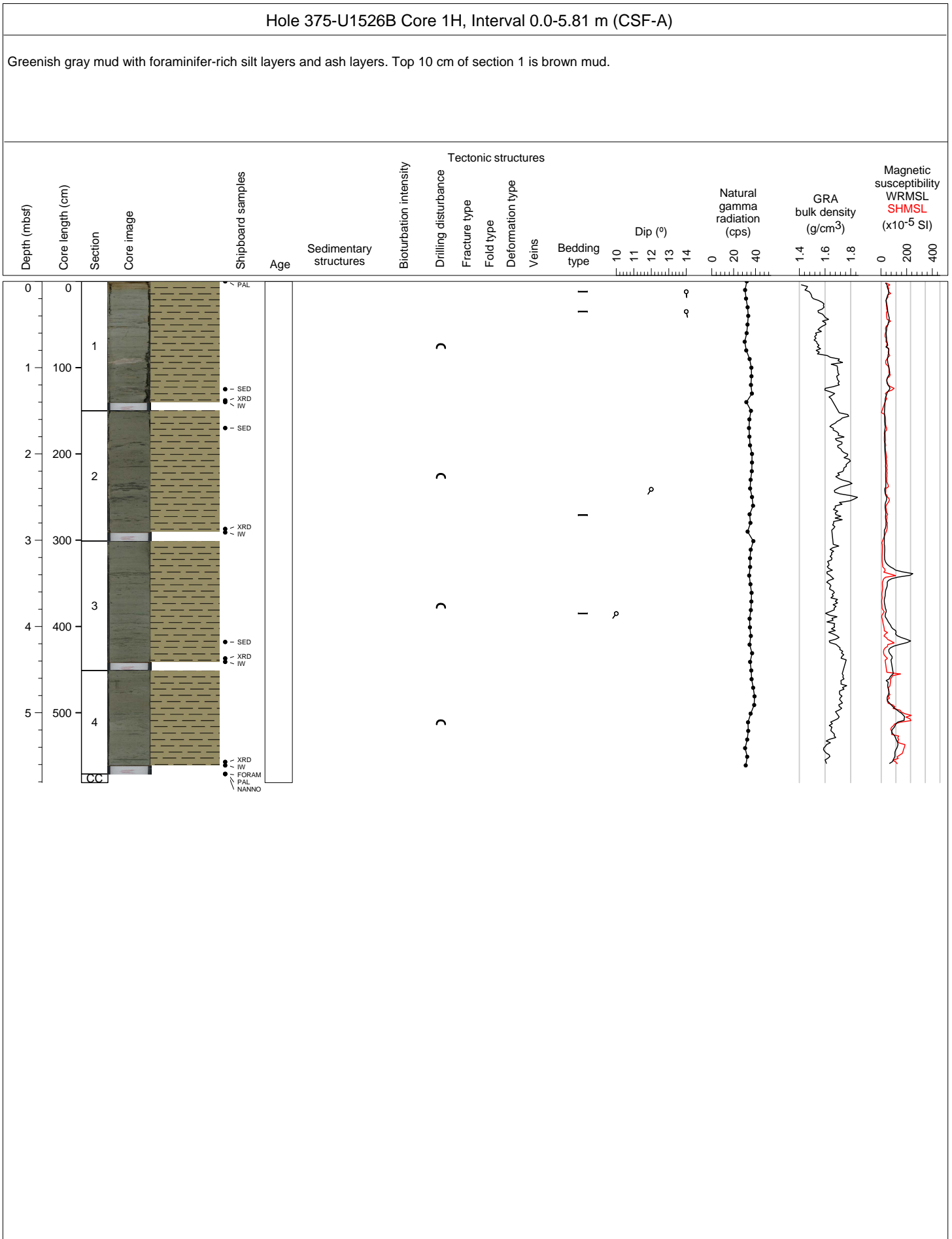


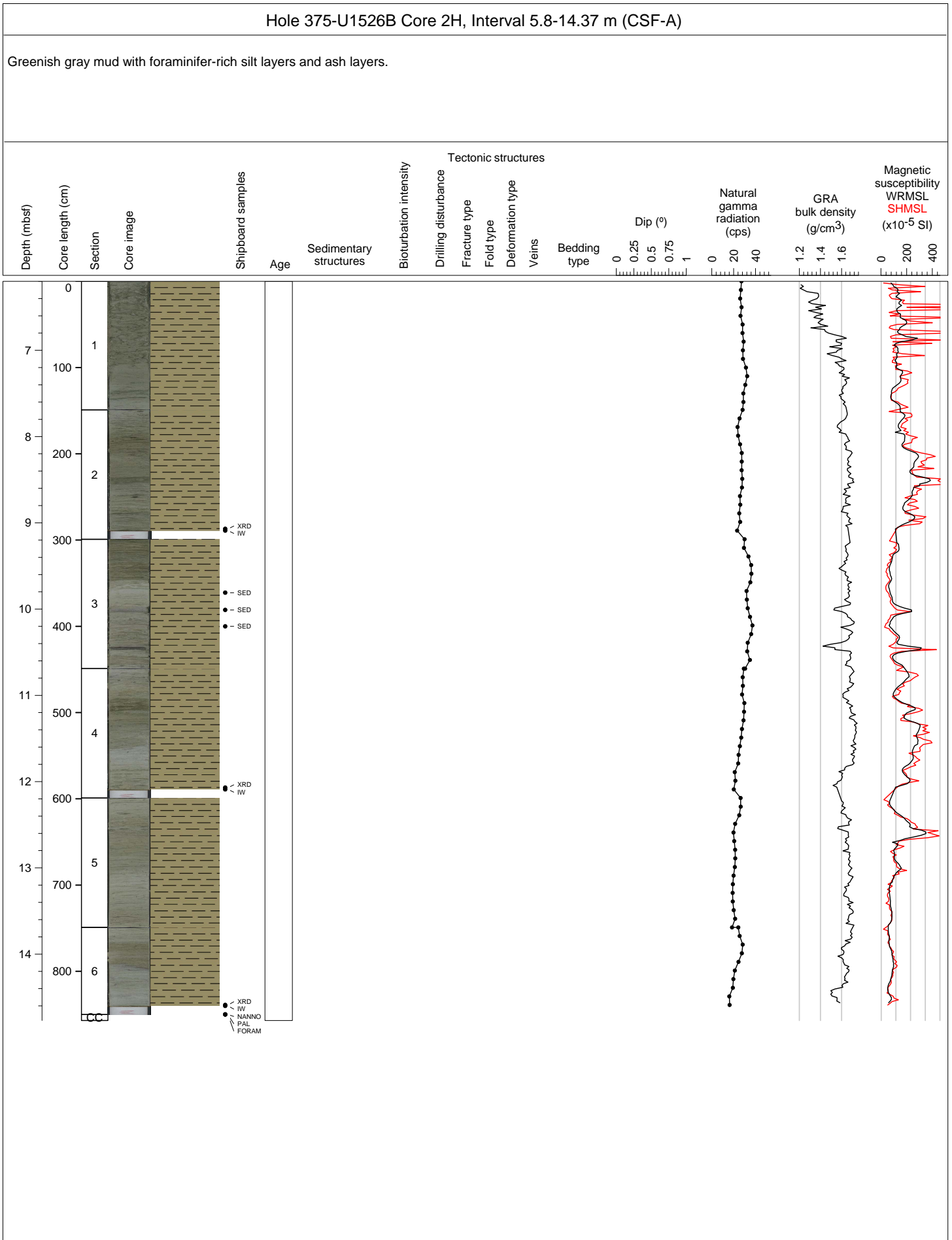
Hole 375-U1526A Core 13R, Interval 74.0-75.01 m (CSF-A)

Volcaniclastic conglomerate with subrounded to subangular clasts of basalt.



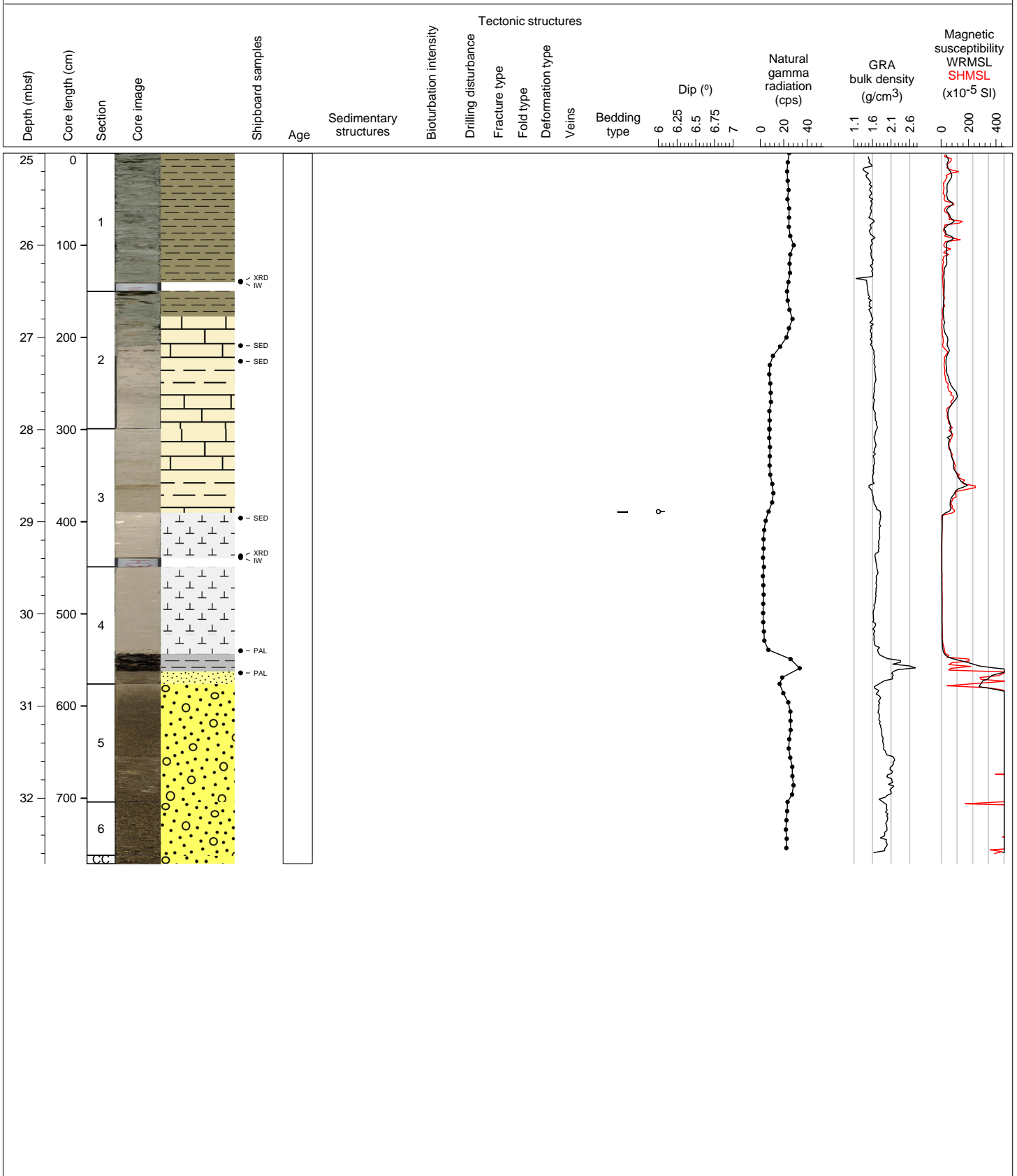






Hole 375-U1526B Core 4H, Interval 24.8-32.51 m (CSF-A)

Core comprises, from top to bottom: greenish gray mud, nannofossil-rich, light green calcareous mudstone, light pink nannofossil-rich ooze and volcanoclastic conglomerate with shells.



Hole 375-U1526B Core 5X, Interval 32.5-33.11 m (CSF-A)

Matrix-supported conglomerate with variably altered basalt clasts in a sand-sized matrix composed of shell and basalt fragments. The top 32 cm of section is washed out and composed of clasts of basalts up to 5-6 cm big. The clast at the very top of section show a rim of manganese concretion and is in primary contact with a washed out layer of chalk.

