



CM Scale	SS+TS Sample	Drilling Disturbance	Lithology C ST SD G	Bioturbation Index 0-4	Sedimentary Structures	Pebble Counts >4mm less than #10	Logged By:	Date:
							Ruthie	2/19/19
Comments								
0				0		0		0-151: dark gray silty clay thinly laminated
2								
4								
6								
8								
10								
12								4: black lenses / <sup>or</sup> discontinuous laminae
14								5-12: tilted biscuits (drilling disturbance)
16								
18								
20								
22								
24								
26								
28								
30								mostly horizontal planar laminations, except 30-48cm (cant tell, biscuits slightly rotated), also 115-121, and 144-end.
32								
34								
36								
38								
40								
42								
44								intervals of normal grading from silt to silty clay.
46								
48								
50								
52								
54								
56								
58								
60								
62								
64								
66								
68								
70								
72								
74								
76								
78								
80								
82								
84								
86								
88								
90								
92								
94								
96								
98								
100								93: dark mottling (possible pyritized burrow?)
102								
104								
106								
108								
110								
112								
114								
116								
118								
120								
122								
124								121-127: carbonate-cemented sandstone chunks gray! (highly fractured & rotated)
126								
128								
130								
132								
134								
136								132: small silt lenses
138								
140								
142								
144								
146								
148								
150								
152								

CM Scale

0  
2  
4  
6  
8  
10  
12  
14  
16  
18  
20  
22  
24  
26  
28  
30  
32  
34  
36  
38  
40  
42  
44  
46  
48  
50  
52  
54  
56  
58  
60  
62  
64  
66  
68  
70  
72  
74  
76  
78  
80  
82  
84  
86  
88  
90  
92  
94  
96  
98  
100  
102  
104  
106  
108  
110  
112  
114  
116  
118  
120  
122  
124  
126  
128  
130  
132  
134  
136  
138  
140  
142  
144  
146  
148  
150  
152

moderately biscuited

fracture

CM Scale	SS+TS Sample	Drilling Disturbance	Lithology C ST SD G	Bioturbation Index 0-4	Sedimentary Structures	Pebble Counts >4mm less than #10	Logged By: BR	Date: 19/2/18
							Comments	
0								
2								
4								
6								
8								
10								
12								
14								
16								
18								
20								
22								
24								
26								
28								
30								
32								
34								
36								
38								
40								
42								
44								
46								
48								
50								
52								
54								
56								
58								
60								
62								
64								
66								
68								
70								
72		biscuit						
74								
76								
78								
80								
82								
84								
86								
88								
90								
92								
94								
96								
98								
100								
102								
104								
106								
108								
110								
112								
114								
116								
118								
120								
122								
124								
126								
128								
130								
132								
134								
136								
138								
140								
142								
144								
146								
148								
150								
152								

0-148 cm Dark gray thinly laminated silty clay with interlaminae inter laminations of silt. Occasional black lamina, rare silt lenses.

16cm black lamina

20-21cm silt lens with deformed lamina

34cm silt lenses

63-65cm deformed lamina (drilling disturbance?)

67cm mottle

72cm black lamina

104cm black lamina

130 - mottling (black) possible bioturbation??

141 - silt lens

148

CM Scale	SS+TS Sample	Drilling Disturbance	Lithology C ST SD G	Bioturbation Index 0-4	Sedimentary Structures	Pebble Counts >4mm less than #10	Logged By: Ruthee	Date: 2/19/19
							Comments	
0				0		0	<p>0-117: dark gray silty clay thinly laminated horiz. planar lamination mostly (some slightly tilting biscuits)</p> <p>intervals of normal grading from silt to sandy silt, e.g., 98, 109 cm</p> <p>silt interlamination with sharp upper &amp; lower boundaries, e.g., 4, 43, 95 cm (2-3 mm thick)</p> <p>97: silt lens/pod 99: very small silt lens/pods</p> <p>78-79: bowed laminations</p> <p>86-87: lenticular <sup>silt</sup> laminations</p>	
-2								
-4								
-6								
-8								
-10								
-12								
-14								
-16								
-18								
-20								
-22								
-24								
-26								
-28								
-30								
-32								
-34								
-36								
-38								
-40								
-42								
-44								
-46								
-48								
-50								
-52								
-54								
-56								
-58								
-60								
-62								
-64								
-66								
-68								
-70								
-72								
-74								
-76								
-78								
-80								
-82								
-84								
-86								
-88								
-90								
-92								
-94								
-96								
-98								
-100								
-102								
-104								
-106								
-108								
-110								
-112								
-114								
-116								
-118								
-120								
-122								
-124								
-126								
-128								
-130								
-132								
-134								
-136								
-138								
-140								
-142								
-144								
-146								
-148								
-150								
-152								

moderately biscuited

4

63

78

79

95

86

87

98

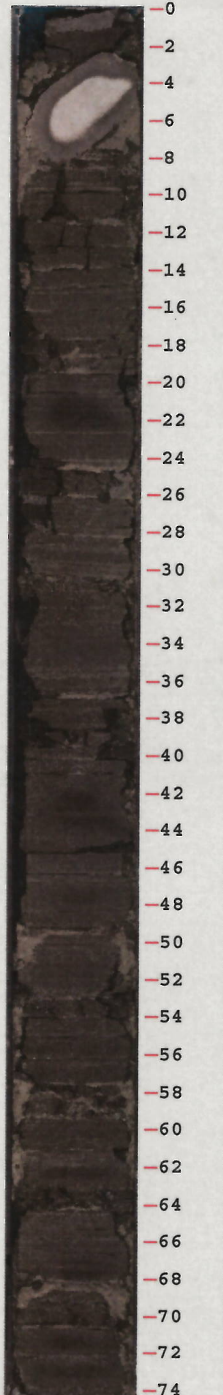
109

M

NSLD

CM Scale	SS+TS Sample	Drilling Disturbance	Lithology C ST SD G	Bioturbation Index 0-4	Sedimentary Structures	Pebble Counts >4mm less than #10	Logged By:	Date:
							Ruthie	2/19/19
0							Comments	
2				0				
4							0-94: dark gray silty clay thinly laminated	
6							silt laminae throughout silt interlamination with sharp upper 1/2 lower boundary can reach ~3mm thickness (e.g., 18, 42, 61 cm)	
8								
10							intervals of normal grading from silt to silty clay, e.g., 73 cm	
12								
14							10: dark discontinuous lamination	
16								
18							46 - truncation - drilling disturbance? 46-49: bowed laminae	
20								
22							slurry <del>77</del> 46 49	
24								
26							61	
28								
30							moderately dissected	
32								
34							42	
36								
38							46	
40								
42							49	
44								
46							61	
48								
50							61	
52								
54							61	
56								
58							61	
60								
62							61	
64								
66							61	
68								
70							61	
72								
74							61	
76								
78							61	
80								
82							61	
84								
86							61	
88								
90							61	
92								
94							61	
96								
98							61	
100								
102							61	
104								
106							61	
108								
110							61	
112								
114							61	
116								
118							61	
120								
122							61	
124								
126							61	
128								
130							61	
132								
134							61	
136								
138							61	
140								
142							61	
144								
146							61	
148								
150							61	
152								

CM Scale	SS+TS Sample	Drilling Disturbance	Lithology C ST SD G	Bioturbation Index 0-4	Sedimentary Structures	Pebble Counts >4mm less than #10	Logged By: BR	Date: 19/2/19
							Comments	
0								
2								
4								
6								
8								
10								
12								
14								
16								
18								
20								
22								
24								
26								
28								
30								
32								
34								
36								
38								
40								
42								
44								
46								
48								
50								
52								
54								
56								
58								
60								
62								
64								
66								
68								
70								
72								
74								
76								75
78								
80								
82								
84								
86								
88								
90								
92								
94								
96								
98								
100								
102								
104								
106								
108								
110								
112								
114								
116								
118								
120								
122								
124								
126								
128								
130								
132								
134								
136								
138								
140								
142								
144								
146								
148								
150								
152								



biscuit

0-75 cm Dark gray thinly laminated silty clay

3-9 cm cemented carbonate sandstone bed  
12 cm deformed lamina

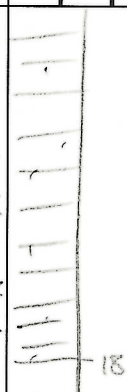
42 cm - silt lens

75

CM Scale	SS+TS Sample	Drilling Disturbance	Lithology				Bioturbation Index 0 - 4	Sedimentary Structures	Pebble Counts >4mm less than #10	Logged By:	Date:
			C	ST	SD	G				Ruthie	2/19/19
0											
2						1					
4											
6											
8											
10											
12											
14											
16											
18											
20											
22											
24											
26											
28											
30											
32											
34											
36											
38											
40											
42											
44											
46											
48											
50											
52											
54											
56											
58											
60											
62											
64											
66											
68											
70											
72											
74											
76											
78											
80											
82											
84											
86											
88											
90											
92											
94											
96											
98											
100											
102											
104											
106											
108											
110											
112											
114											
116											
118											
120											
122											
124											
126											
128											
130											
132											
134											
136											
138											
140											
142											
144											
146											
148											
150											
152											

PAL

0-24: dark gray thinly laminated silty clay with silt laminae  
 horiz. planar lamination, at least up until 18 cm  
 15: flattened burrow



mod. bioturbated

