

CM Scale	SS+TS Sample	Drilling Disturbance	Lithology				Bioturbation Index 0 - 4	Sedimentary Structures	Pebble Counts >4mm less than #10	Logged By:	Date:
			C	ST	SD	G				Rutlie	2/28/19
0											
2											
4											
6											
8											
10											
12											
14											
16											
18											
20											
22											
24											
26											
28											
30											
32											
34											
36											
38											
40											
42											
44											
46											
48											
50											
52											
54											
56											
58											
60											
62											
64											
66											
68											
70											
72											
74											
76											
78											
80											
82											
84											
86											
88											
90											
92											
94											
96											
98											
100											
102											
104											
106											
108											
110											
112											
114											
116											
118											
120											
122											
124											
126											
128											
130											
132											
134											
136											
138											
140											
142											
144											
146											
148											
150											
152											

CM Scale
0
2
4
6
8
10
12
14
16
18
20
22
24
26
28
30
32
34
36
38
40
42
44
46
48
50
52
54
56
58
60
62
64
66
68
70
72
74
76
78
80
82
84
86
88
90
92
94
96
98
100
102
104
106
108
110
112
114
116
118
120
122
124
126
128
130
132
134
136
138
140
142
144
146
148
150
152

SS+TS Sample

Drilling Disturbance

fold in

33

42

slightly fractured

Lithology

C ST SD G

Bioturbation Index 0 - 4

0

Color banding

59

72

fol

137

Sedimentary Structures

Pebble Counts
>4mm
less than #10

0

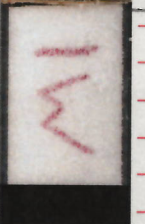
Logged By: Rutlie

Date: 2/28/19

Comments

0-141: thinly laminated clay dominantly dark greenish gray, with ~2-10mm colorbands of greenish gray with dispersed sand grains

Silt laminations at 59, 72, 107 (~1mm thick) and at 137 (~4mm thick)



CM Scale	SS+TS Sample	Drilling Disturbance	Lithology				Bioturbation Index 0 - 4	Sedimentary Structures	Pebble Counts >4mm less than #10	Logged By:	Date:
			C	ST	SD	G				Ruthie	2/28/19
0									<p>0-131: thinly laminated clay dominantly dark greenish gray, with faint greenish gray color bands</p> <p>dispersed sand grains</p> <p>dispersed sub-mm black markings → → slight bioturbation</p> <p>41: ~3mm ^{soft} sediment intraclast or grain cluster</p> <p>silt laminations at 9, 56, 60, 69, 79 cm</p>		
-2						1		0			
-4						↓		↓			
-6											
-8											
-10							9				
-12											
-14											
-16											
-18											
-20											
-22											
-24							color banding				
-26											
-28											
-30											
-32											
-34											
-36											
-38											
-40											
-42											
-44											
-46											
-48											
-50											
-52											
-54											
-56							56				
-58											
-60							60				
-62											
-64											
-66											
-68							69				
-70											
-72											
-74											
-76											
-78							79				
-80											
-82											
-84											
-86											
-88											
-90											
-92											
-94											
-96											
-98											
-100											
-102											
-104											
-106											
-108											
-110											
-112											
-114											
-116											
-118											
-120											
-122											
-124											
-126											
-128											
-130											
-132											
-134											
-136											
-138											
-140											
-142											
-144											
-146											
-148											
-150											
-152											

slight faulting / fracture

SS

CM Scale	SS+TS Sample	Drilling Disturbance	Lithology				Bioturbation Index 0-4	Sedimentary Structures	Pebble Counts >4mm less than #10	Logged By:	Date:
			C	ST	SD	G				Ruthie	2/28/19
0								0	Comments		
2						1		0			
4								↓	0-75: thinly laminated clay		
6									dominantly dark greenish gray, with faint greenish gray color bands		
8									dispersed sand grains		
10									57: 2 mm black marking (bioturbation?)		
12											
14											
16											
18											
20											
22											
24											
26											
28											
30											
32											
34											
36											
38											
40											
42											
44											
46											
48											
50											
52											
54											
56											
58											
60											
62											
64	SS										
66											
68											
70											
72											
74											
76											
78											
80											
82											
84											
86											
88											
90											
92											
94											
96											
98											
100											
102											
104											
106											
108											
110											
112											
114											
116											
118											
120											
122											
124											
126											
128											
130											
132											
134											
136											
138											
140											
142											
144											
146											
148											
150											
152											

slightly fractured

color banding

(cross-lamination)
46-48 } sand ripples up to 1.5cm thick
58-62 } washed out, but remaining structures of more resistant material

62-65: highly consolidated tan ("gray") bed of carbonate

67-68, 70: slightly disturbed/deformed silt laminations (~4mm thick)

75-107: greenish gray diatom-bearing clay with common sand, granules, pebbles
felsic, plutonic

black, fine grained; igneous or slate ...?

107-108: void

VOID

CM Scale	SS+TS Sample	Drilling Disturbance	Lithology C ST SD G	Bioturbation Index 0-4	Sedimentary Structures	Pebble Counts >4mm less than #10	Logged By:	Date:	
							SP	2/28/19	
0						∅	0-50 cm: greenish gray biosiliceous-rich clay - dispersed sand and granules. - massive 11-12 cm: possible pyritized burrows or vein networks?		
2									
4									
6									
8									
10									
12									
14									
16									
18				4					
20							50 cm: gradual, bioturbated contact 50 cm: dark greenish gray weakly laminated clay discrete silt laminae at 92 and 102 cm. 88 cm SS: clay		
22									
24									
26									
28									
30									
32									
34									
36									
38									
40	biscuiting			41			50 cm: gradual, bioturbated contact 50 cm: dark greenish gray weakly laminated clay discrete silt laminae at 92 and 102 cm. 88 cm SS: clay		
42									
44									
46					3				
48									
50									
52					50				
54									
56					2				
58					57				
60							50 cm: gradual, bioturbated contact 50 cm: dark greenish gray weakly laminated clay discrete silt laminae at 92 and 102 cm. 88 cm SS: clay		
62									
64									
66									
68									
70									
72									
74									
76									
78				1					
80							50 cm: gradual, bioturbated contact 50 cm: dark greenish gray weakly laminated clay discrete silt laminae at 92 and 102 cm. 88 cm SS: clay		
82									
84									
86									
88									
90									
92									
94									
96									
98									
100							50 cm: gradual, bioturbated contact 50 cm: dark greenish gray weakly laminated clay discrete silt laminae at 92 and 102 cm. 88 cm SS: clay		
102									
104									
106									
108									
110									
112									
114									
116									
118									
120							50 cm: gradual, bioturbated contact 50 cm: dark greenish gray weakly laminated clay discrete silt laminae at 92 and 102 cm. 88 cm SS: clay		
122									
124									
126									
128									
130									
132									
134									
136									
138									
140							50 cm: gradual, bioturbated contact 50 cm: dark greenish gray weakly laminated clay discrete silt laminae at 92 and 102 cm. 88 cm SS: clay		
142									
144									
146									
148									
150									
152									

CM Scale	SS+TS Sample	Drilling Disturbance	Lithology C ST SD G	Bioturbation Index 0-4	Sedimentary Structures	Pebble Counts >4mm less than #10	Logged By:	Date:
							SP	2/28/19
Comments								
0	biscuiting	-		-	0	∅	<p>0-7cm: dark greenish gray weakly laminated silty clay</p> <p>2-4cm: dark green laminae (glaucorite?)</p> <p>7cm: sharp boundary</p> <p>7-125cm: dark gray thinly laminated silty clay, weak color banding</p> <p>41cm: silt lamina with green top</p> <p>83cm: silt lamina</p>	
2								
4								
6								
8								
10								
12								
14								
16								
18								
20								
22								
24								
26								
28								
30								
32								
34								
36								
38								
40								
42								
44								
46								
48								
50								
52								
54								
56								
58								
60								
62								
64								
66								
68								
70								
72								
74								
76								
78								
80								
82								
84								
86								
88								
90								
92								
94								
96								
98								
100								
102								
104								
106								
108								
110								
112								
114								
116								
118								
120								
122								
124								
126								
128								
130								
132								
134								
136								
138								
140								
142								
144								
146								
148								
150								
152								

CM Scale	SS+TS Sample	Drilling Disturbance	Lithology C ST SD G	Bioturbation Index 0-4	Sedimentary Structures	Pebble Counts >4mm less than #10	Logged By: SP	Date: 2/28/19
							Comments	
0						∅	0-77cm: dark gray thinly laminated silty clay 16-17cm: silt with ripple cross-lamination 48-49cm: parallel laminated silt other silt laminae 5, 58cm	
-2								
-4								
-6								
-8								
-10								
-12								
-14								
-16								
-18								
-20								
-22								
-24								
-26								
-28								
-30								
-32								
-34								
-36				0				
-38								
-40								
-42								
-44								
-46								
-48								
-50								
-52								
-54								
-56								
-58								
-60								
-62								
-64								
-66								
-68								
-70	69							
-72								
-74								
-76								
-78								
-80	77							
-82								
-84								
-86								
-88								
-90								
-92								
-94								
-96								
-98								
-100								
-102								
-104								
-106								
-108								
-110								
-112								
-114								
-116								
-118								
-120								
-122								
-124								
-126								
-128								
-130								
-132								
-134								
-136								
-138								
-140								
-142								
-144								
-146								
-148								
-150								
-152								

CM Scale	SS+TS Sample	Drilling Disturbance	Lithology				Bioturbation Index 0 - 4	Sedimentary Structures	Pebble Counts >4mm less than #10	Logged By:	Date:
			C	ST	SD	G				SP	2/28/19
0									Comments		
2									dark greenish gray silty clay		
4								Ø	flow-in		
6											
8											
10											
12											
14											
16											
18											
20											
22											
24											
26						X	X				
28											
30											
32											
34											
36											
38											
40											
42											
44											
46											
48											
50											
52											
54											
56											
58											
60											
62											
64											
66											
68											
70											
72											
74											
76											
78											
80											
82											
84											
86											
88											
90											
92											
94											
96											
98											
100											
102											
104											
106											
108											
110											
112											
114											
116											
118											
120											
122											
124											
126											
128											
130											
132											
134											
136											
138											
140											
142											
144											
146											
148											
150											
152											

flow-in

17510

CM Scale	SS+TS Sample	Drilling Disturbance	Lithology				Bioturbation Index 0 - 4	Sedimentary Structures	Pebble Counts >4mm less than #10	Logged By:	Date:
			C	ST	SD	G				SP	2/28/19
0									Comments 0-82 cm: dark greenish gray clay — flow-in		
2								∅			
4											
6											
8											
10											
12											
14											
16											
18											
20											
22											
24											
26											
28						X	X				
30											
32											
34											
36											
38											
40											
42											
44											
46											
48											
50											
52											
54											
56											
58											
60											
62											
64											
66											
68											
70											
72											
74											
76											
78											
80											
82											
84	82										
86											
88											
90											
92											
94											
96											
98											
100											
102											
104											
106											
108											
110											
112											
114											
116											
118											
120											
122											
124											
126											
128											
130											
132											
134											
136											
138											
140											
142											
144											
146											
148											
150											
152											

CM Scale
0
2
4
6
8
10
12
14
16
18
20
22
24
26
28
30
32
34
36
38
40
42
44
46
48
50
52
54
56
58
60
62
64
66
68
70
72
74
76
78
80
82
84
86
88
90
92
94
96
98
100
102
104
106
108
110
112
114
116
118
120
122
124
126
128
130
132
134
136
138
140
142
144
146
148
150
152

flow-in

82

X X

∅

↓

CM Scale	SS+TS Sample	Drilling Disturbance	Lithology				Bioturbation Index 0 - 4	Sedimentary Structures	Pebble Counts >4mm less than #10	Logged By:	Date:
			C	ST	SD	G				SP	2/28/19
Comments											
0	flow-in					X	X	∅	0-31 cm: dark greenish gray clay - flow-in		
2											
4											
6											
8											
10											
12											
14											
16											
18											
20											
22											
24											
26											
28											
30											
32											
34											
36											
38											
40											
42											
44											
46											
48											
50											
52											
54											
56											
58											
60											
62											
64											
66											
68											
70											
72											
74											
76											
78											
80											
82											
84											
86											
88											
90											
92											
94											
96											
98											
100											
102											
104											
106											
108											
110											
112											
114											
116											
118											
120											
122											
124											
126											
128											
130											
132											
134											
136											
138											
140											
142											
144											
146											
148											
150											
152											

PAL