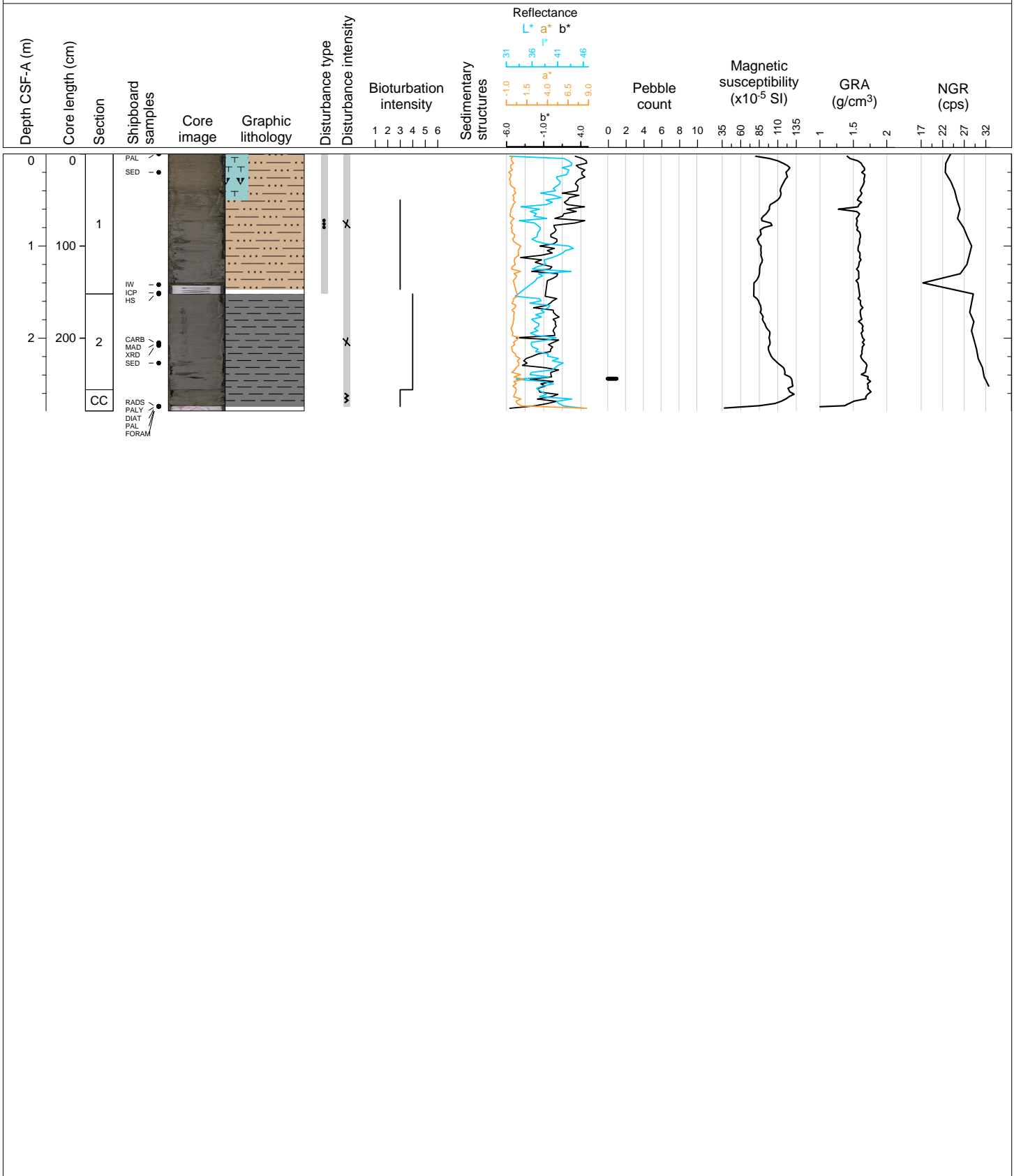


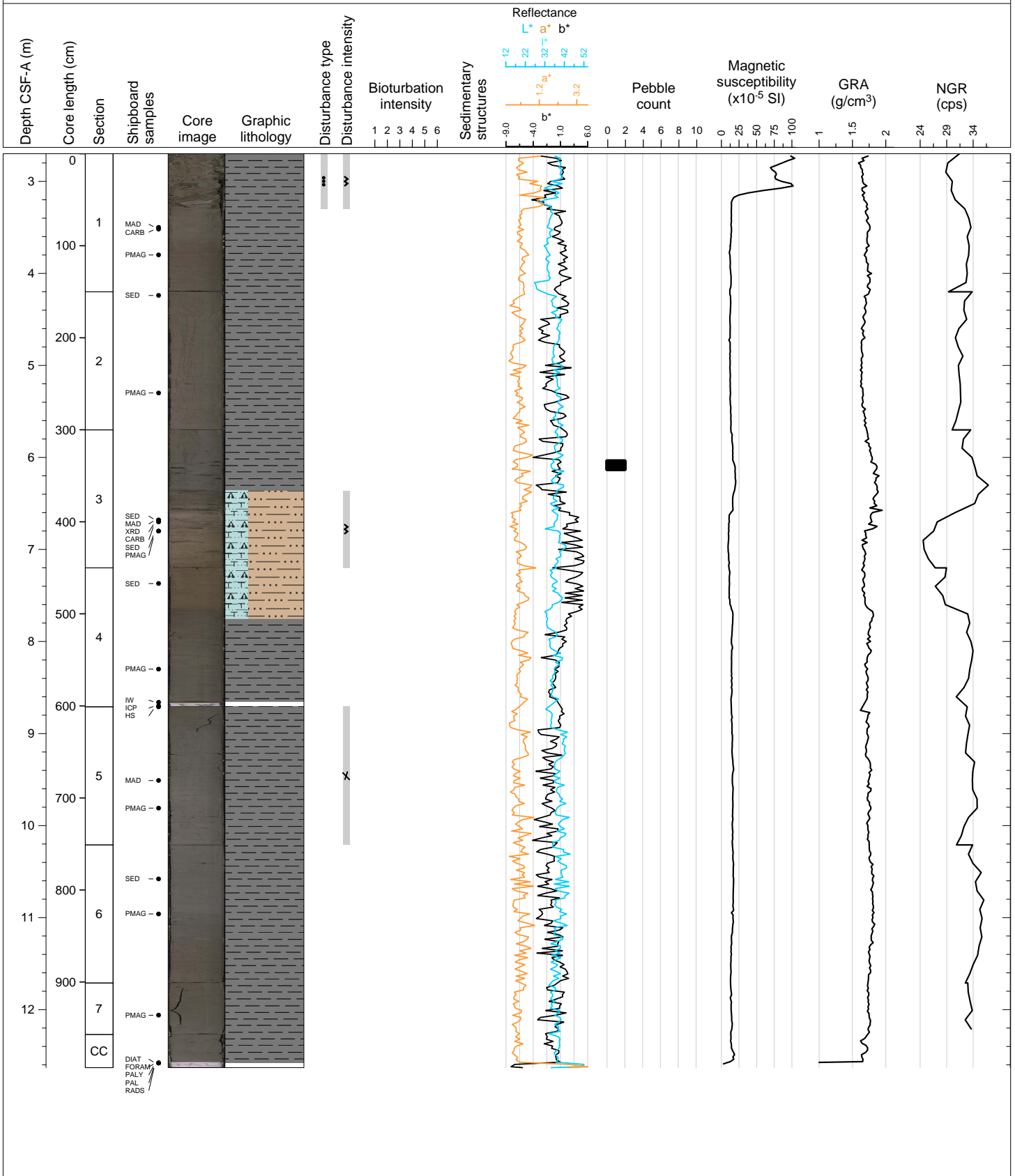
Hole 382-U1535A Core 1H, Interval 0.0-2.79 m (CSF-A)

biosiliceous-bearing foraminifer-bearing silty clay in the top 50 cm, changing to clay in Section 1 and remaining clay through



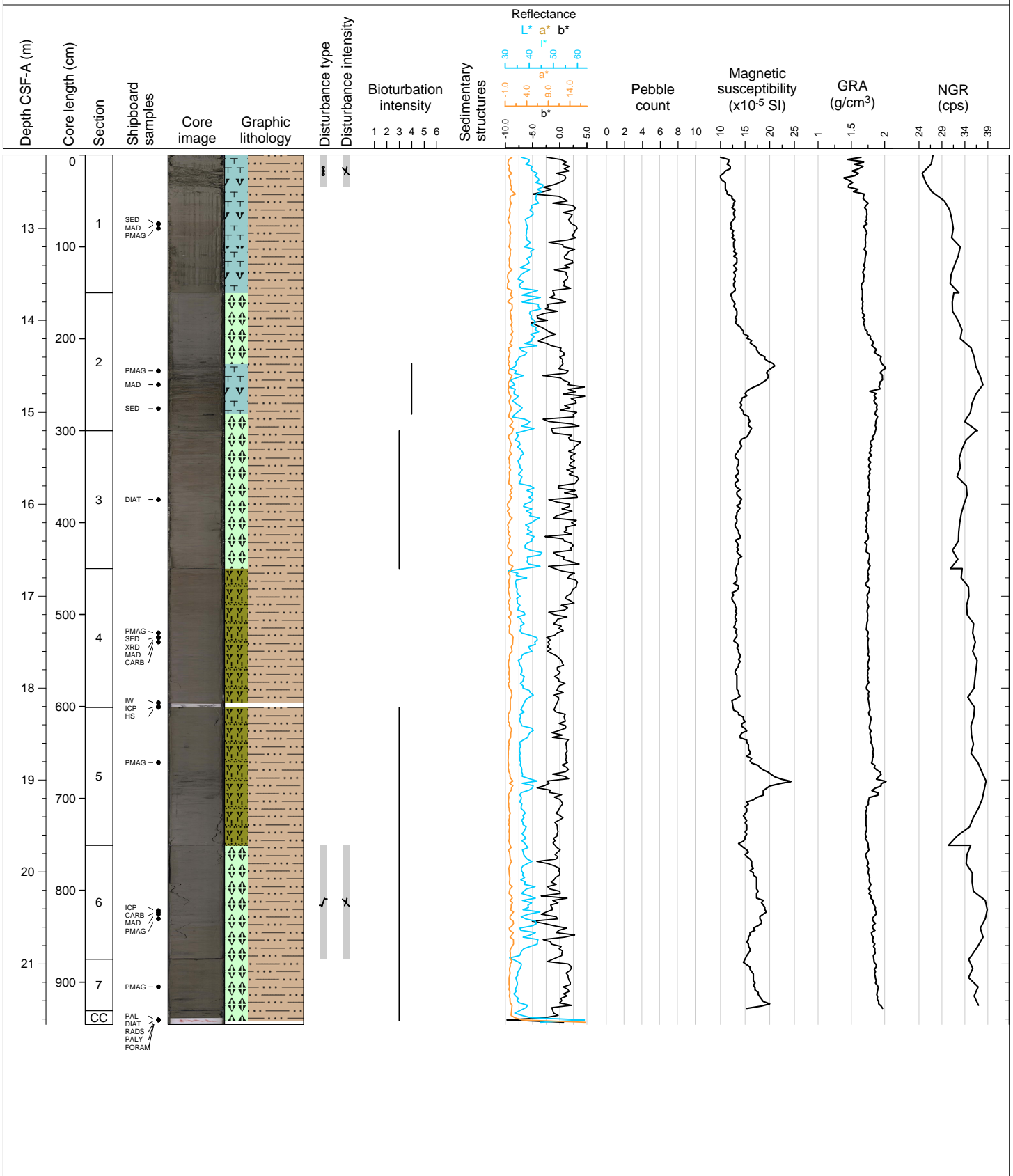
Hole 382-U1535A Core 2H, Interval 2.7-12.63 m (CSF-A)

greenish gray (10Y 5/1) clay gradually changing into foram bearing dark greenish gray (10Y 4/1) silty clay and then returning to greenish gray (10Y 5/1) clay



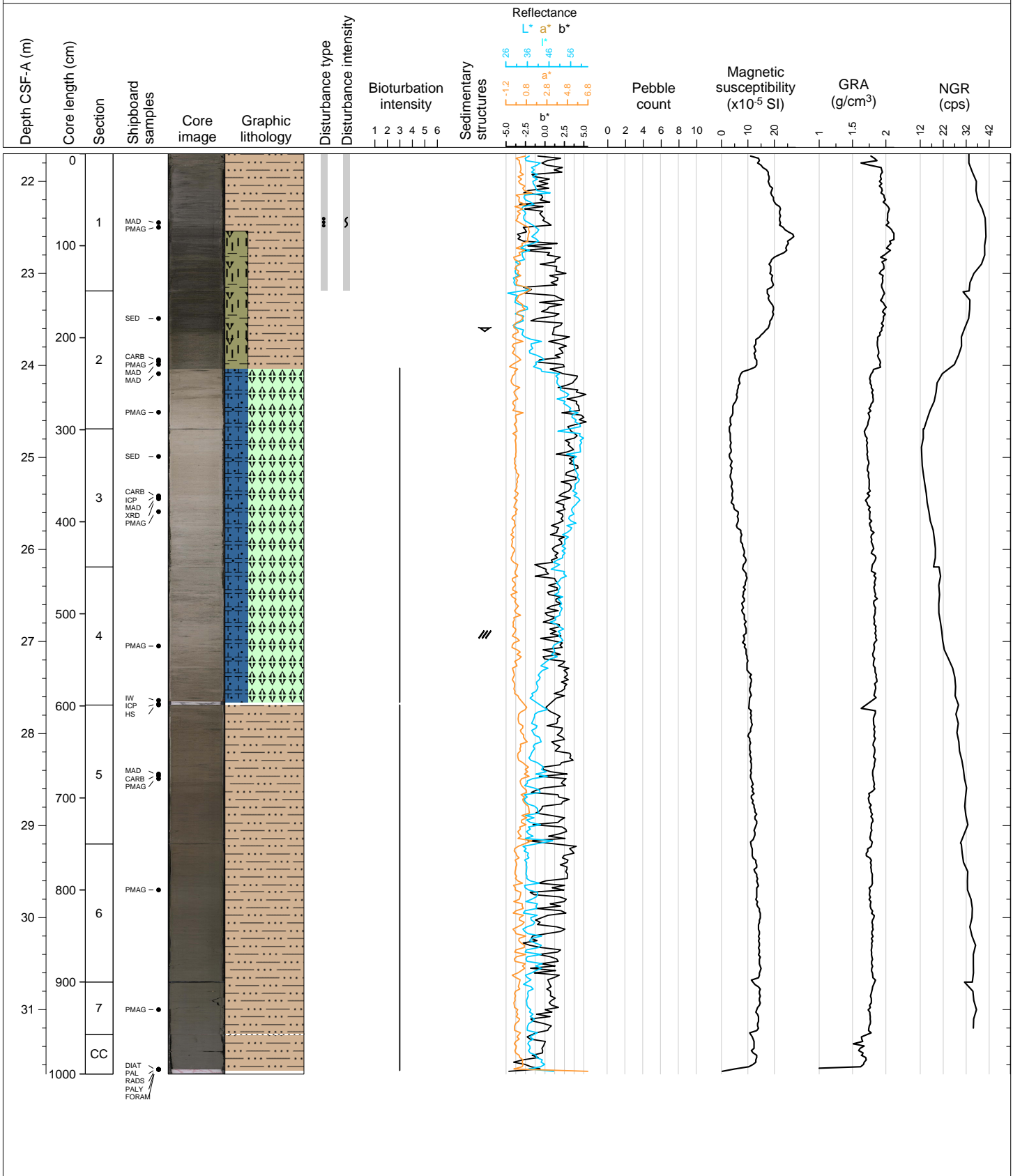
Hole 382-U1535A Core 3H, Interval 12.2-21.66 m (CSF-A)

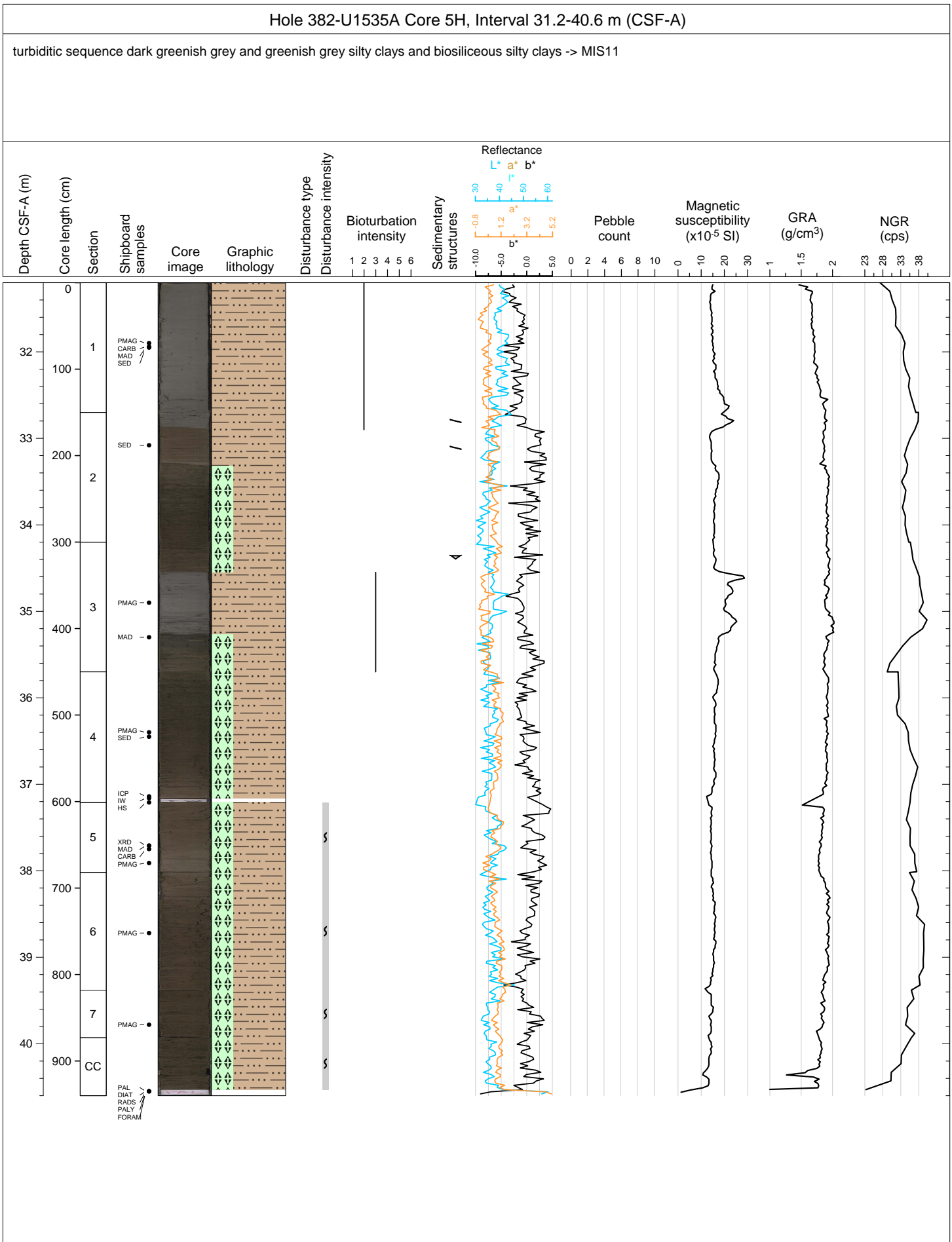
dark greenish to very dark greenish biosiliceous bearing to rich silty clay. section 1 and 60 cm foram-interval in section 2H; IRD clast in section 3 at 131-132 cm; strong H<sub>2</sub>S odor

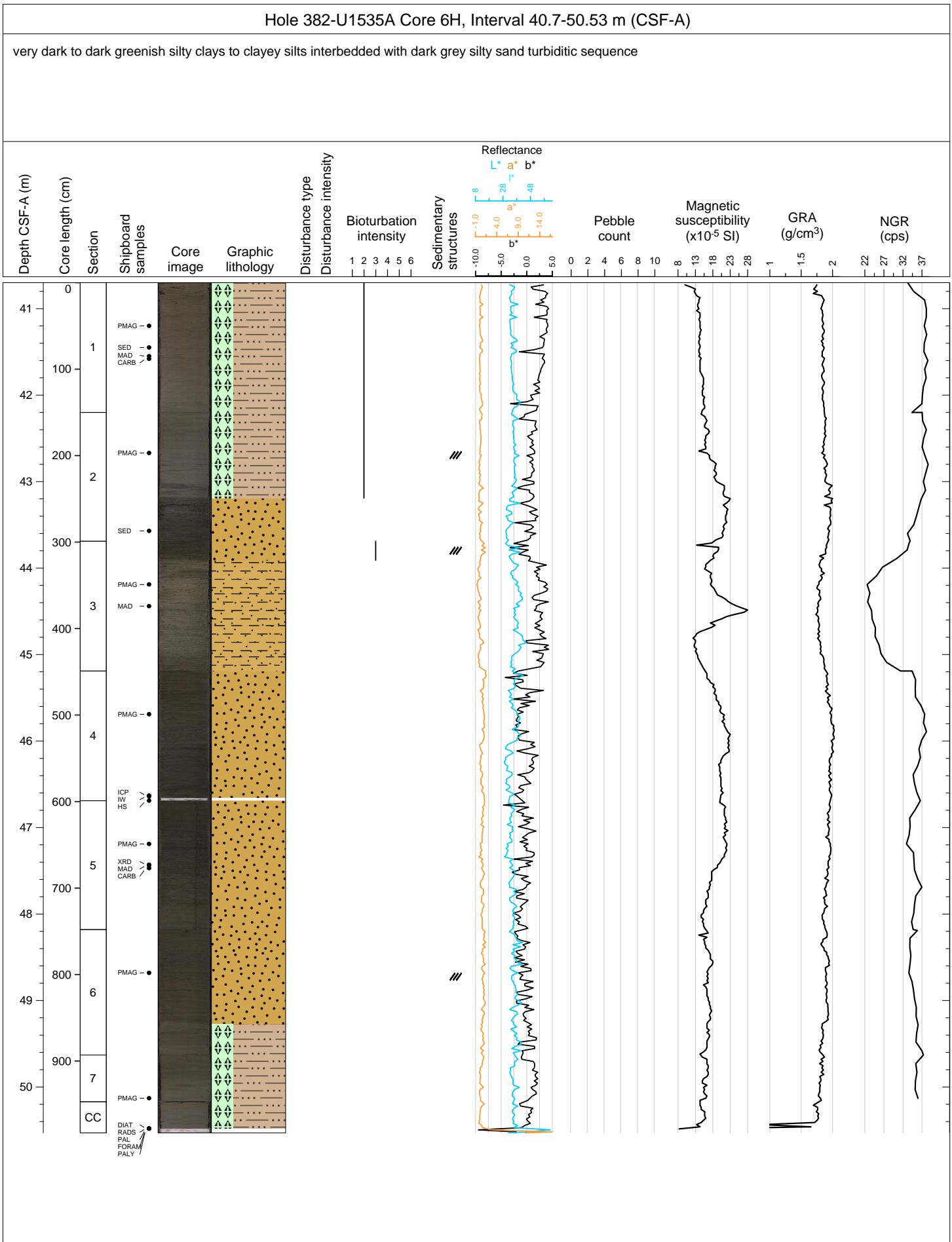


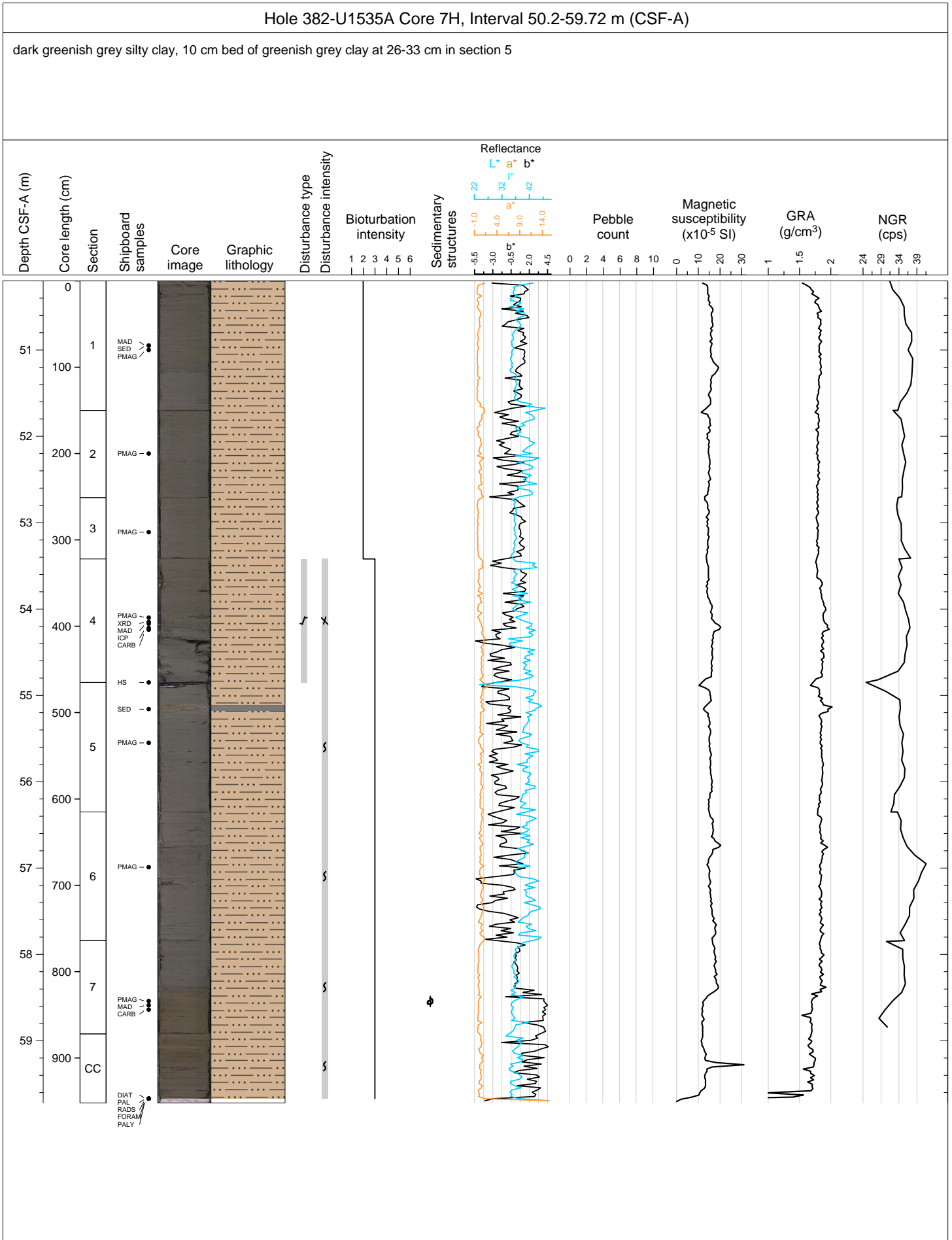
Hole 382-U1535A Core 4H, Interval 21.7-31.7 m (CSF-A)

dark greenish grey silty clay changing to light greenish grey biosiliceous silty clay. Foram and nannofossil-rich biosiliceous ooze in section two (85 cm). Sharp (erosive) boundary. Gradually changing from nannofossil and foram-rich biosiliceous ooze to to spicule bearing silty clay.





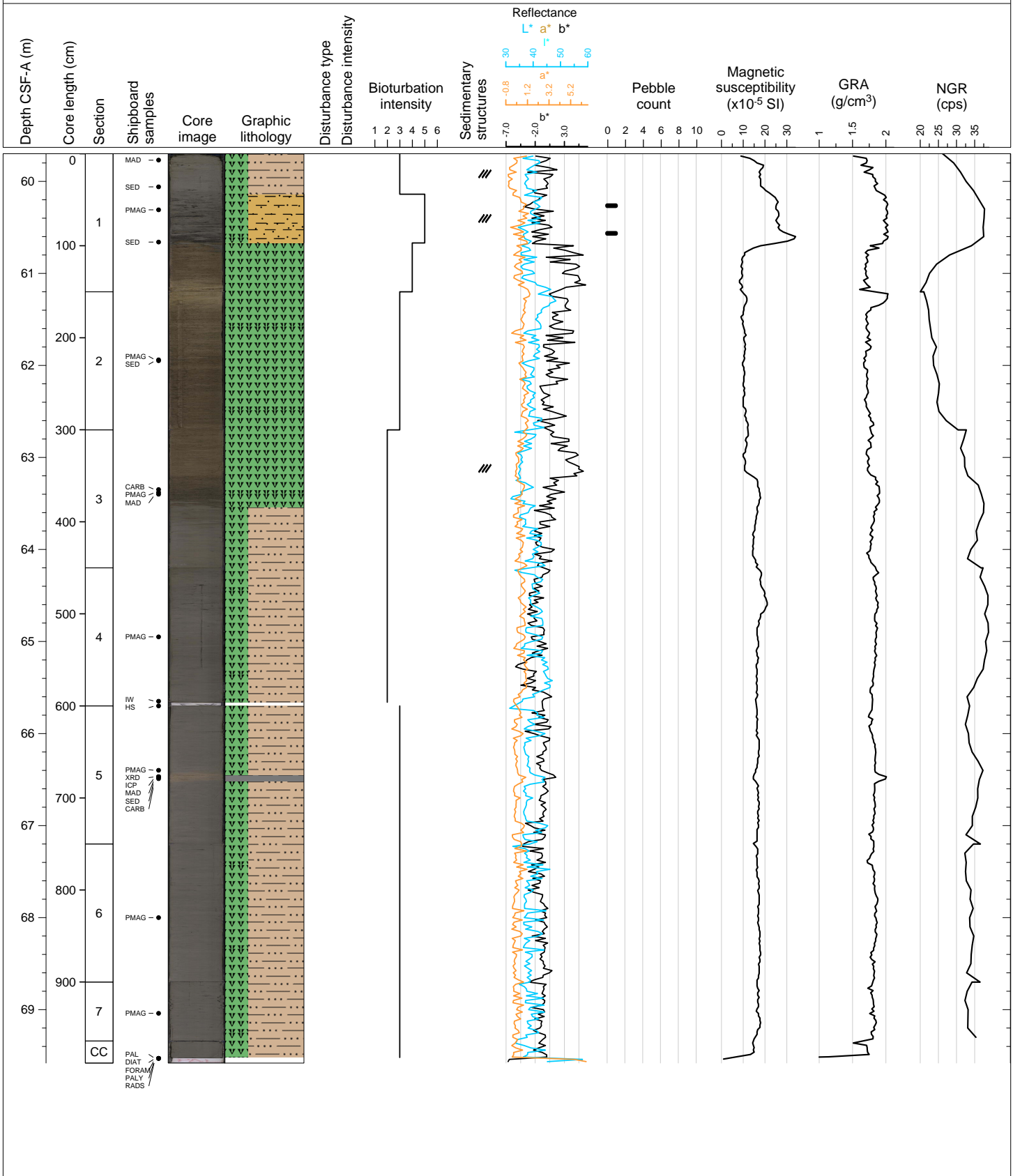




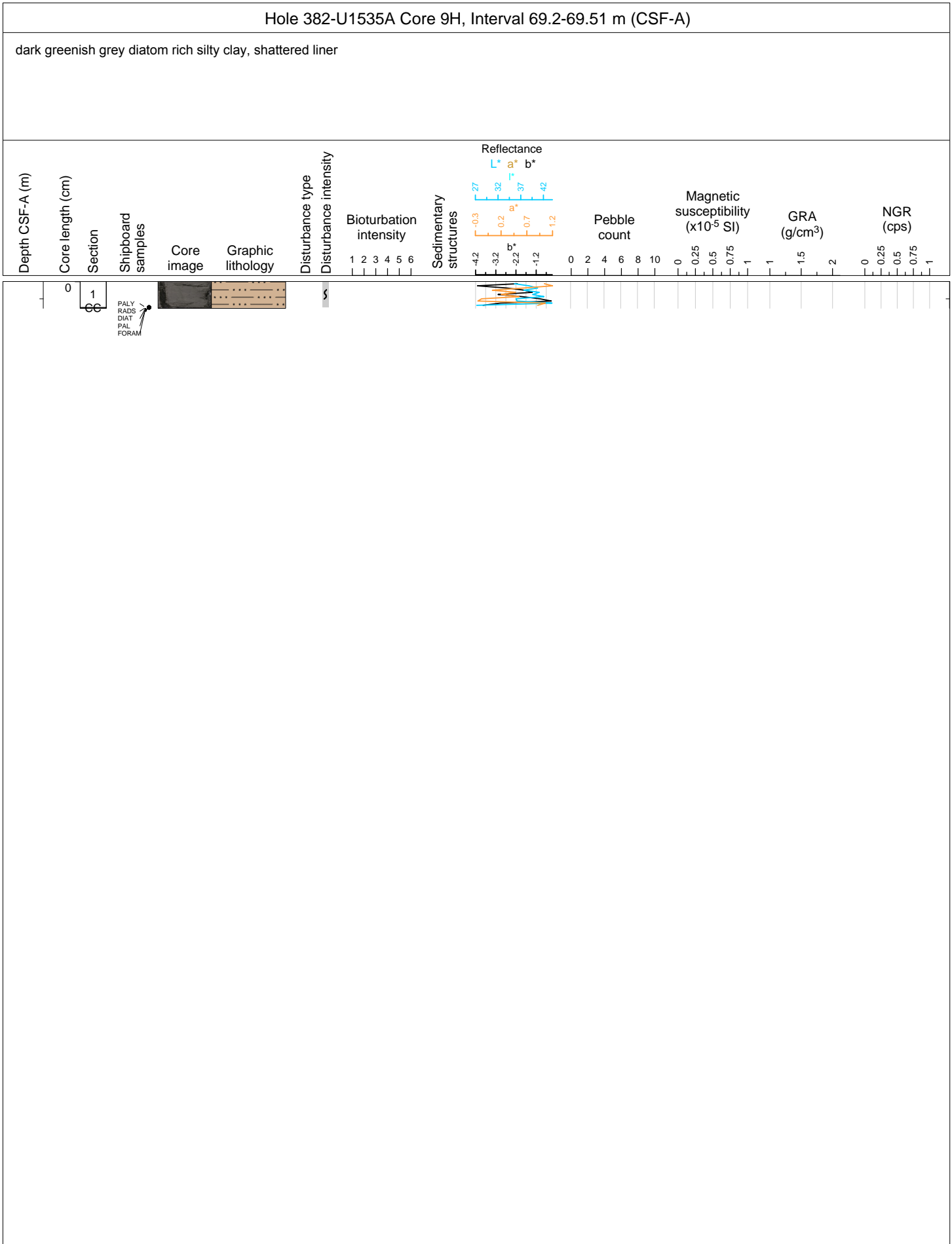


Hole 382-U1535A Core 8H, Interval 59.7-69.58 m (CSF-A)

dark greenish grey diatom rich silty clays, interbedded with diatom oozes in sections 1-3; dropstones at 56 and 86 cm in section one

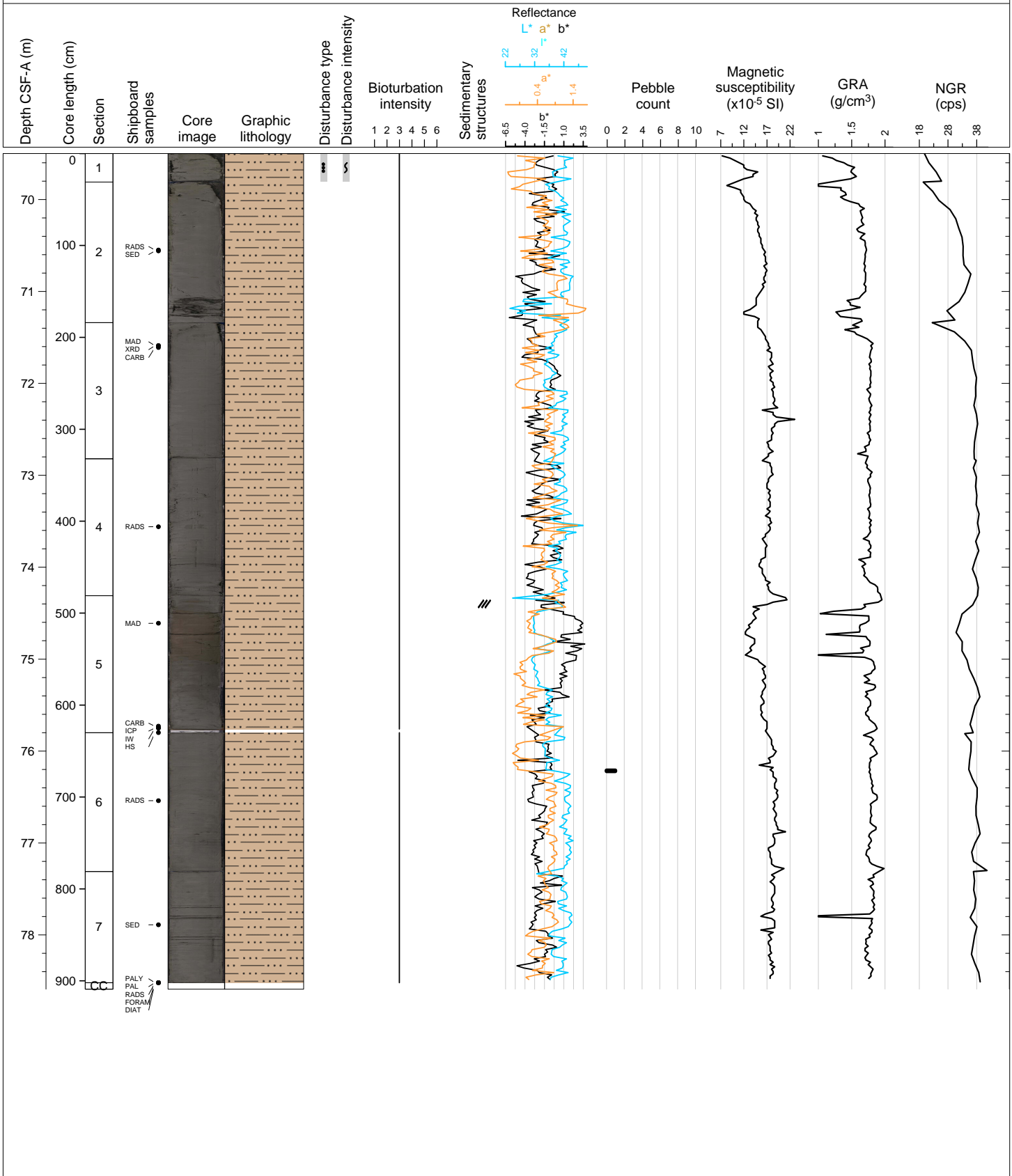






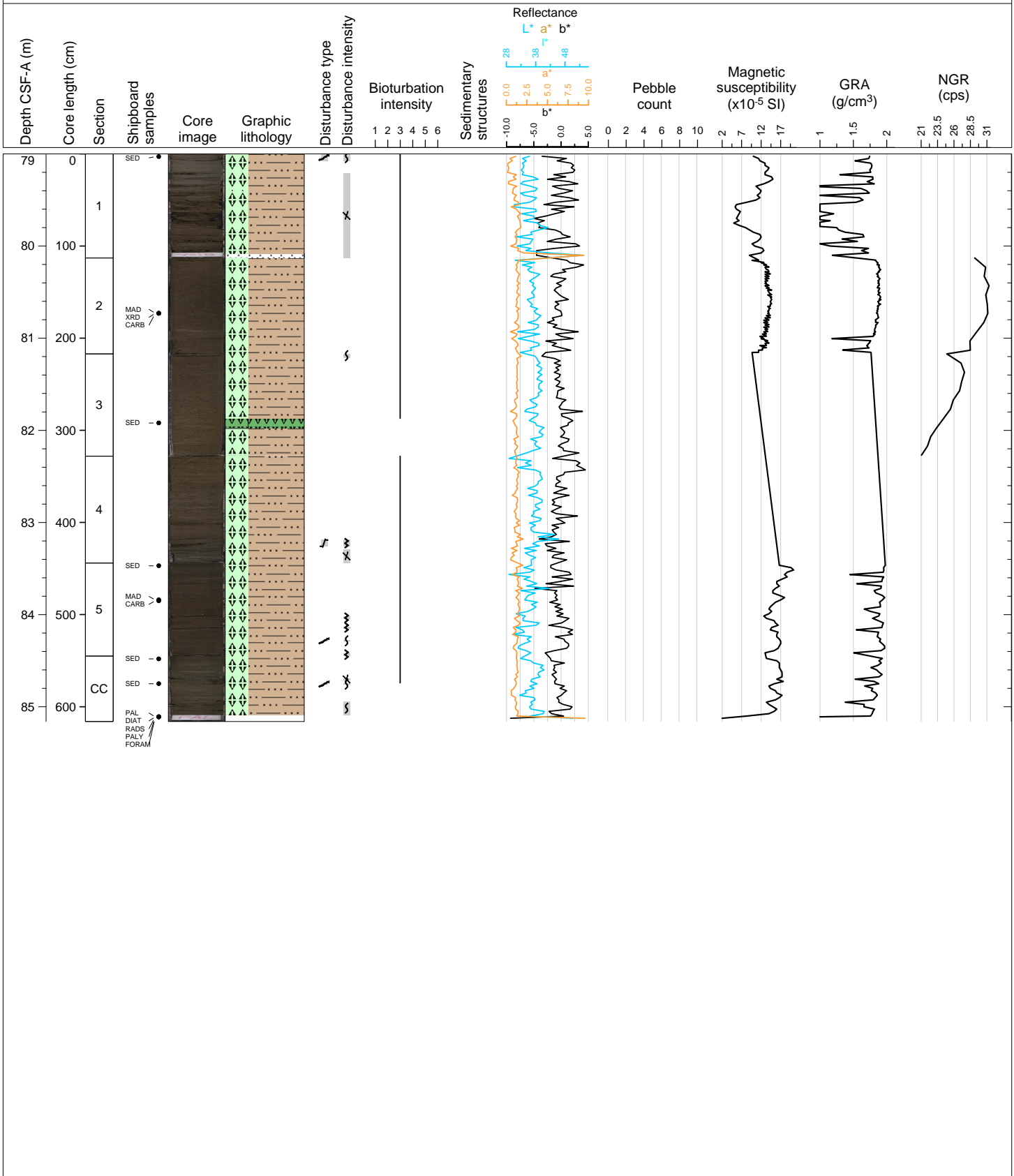
Hole 382-U1535A Core 10H, Interval 69.5-78.59 m (CSF-A)

dark greenish grey silty clay; upper part of 10H 1A slightly soupy



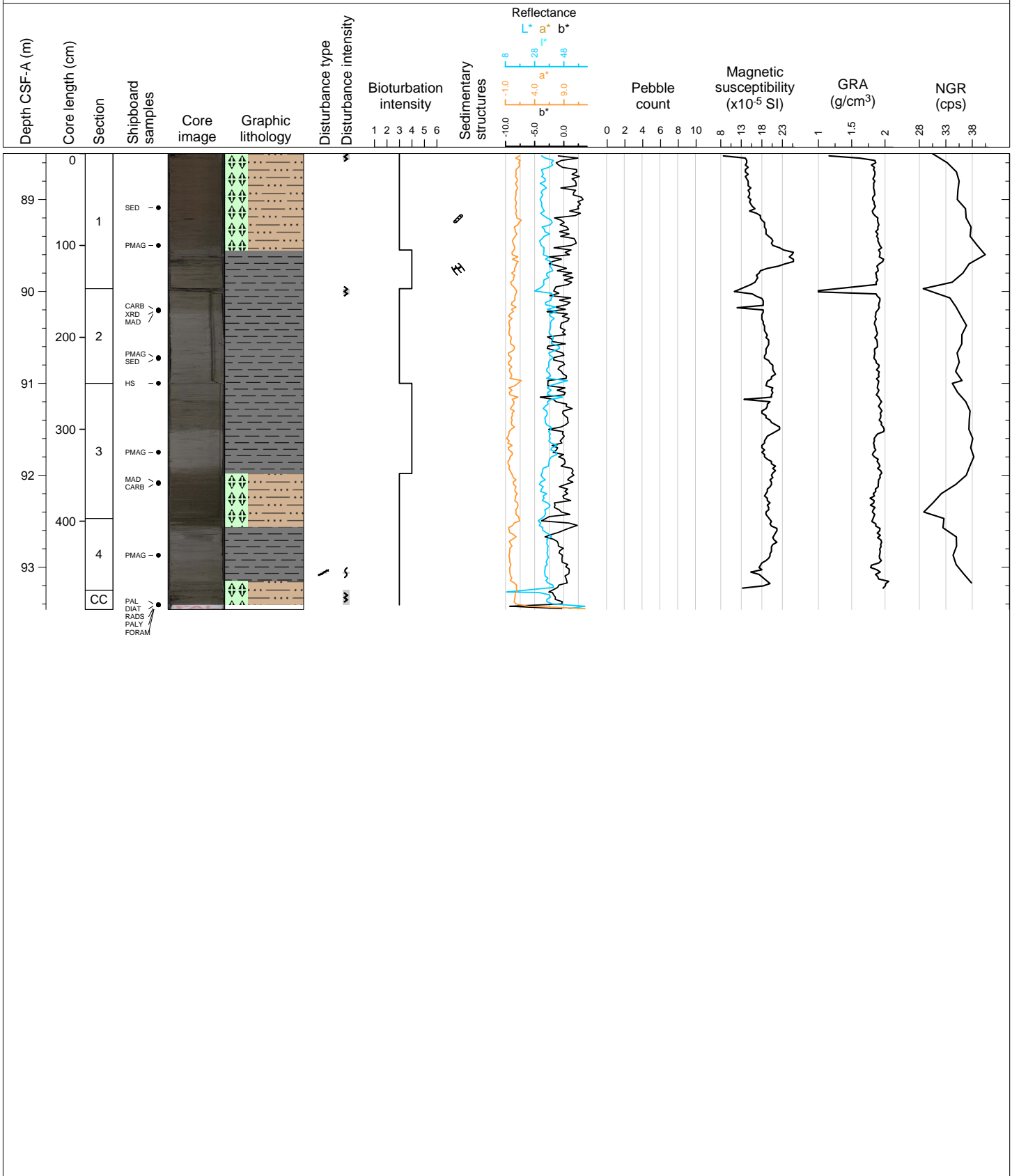
Hole 382-U1535A Core 11H, Interval 79.0-85.16 m (CSF-A)

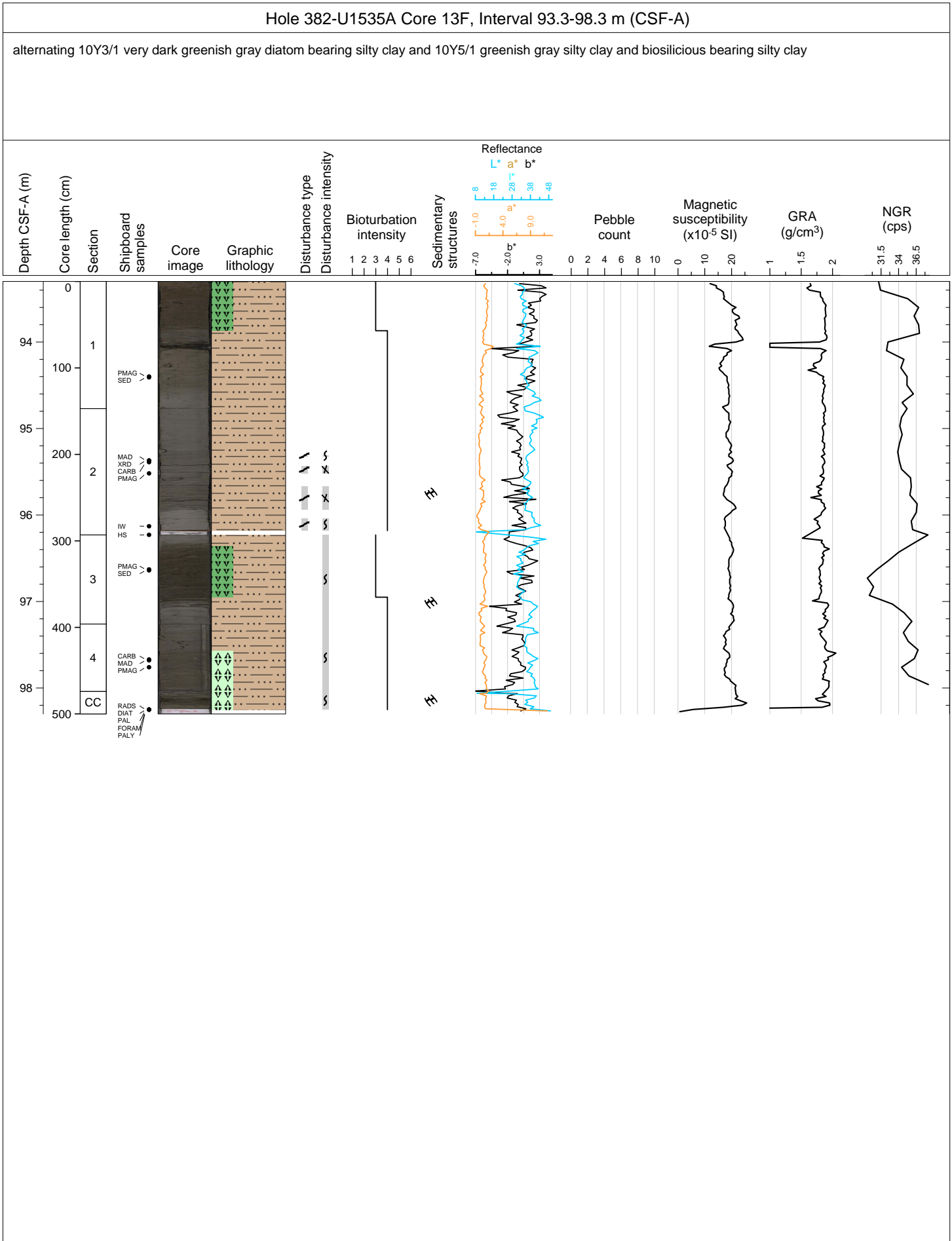
very dark greenish grey diatom-rich silty clay; 10cm layer of silty diatom ooze in 11H 3A



Hole 382-U1535A Core 12F, Interval 88.5-93.46 m (CSF-A)

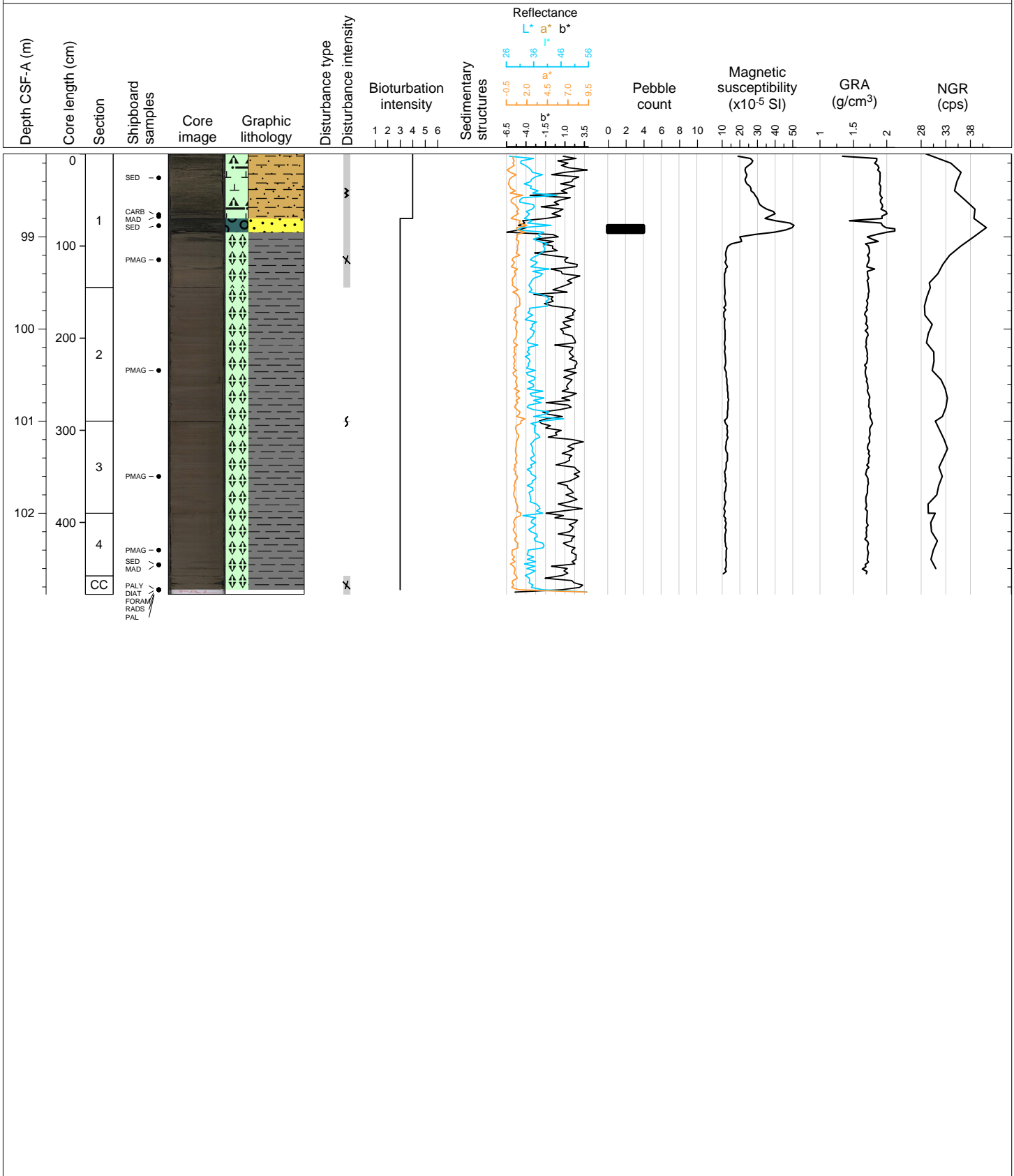
alternating 10Y3/1 very dark greenish gray biosilicious silty clay and 10Y5/1 greenish gray clay





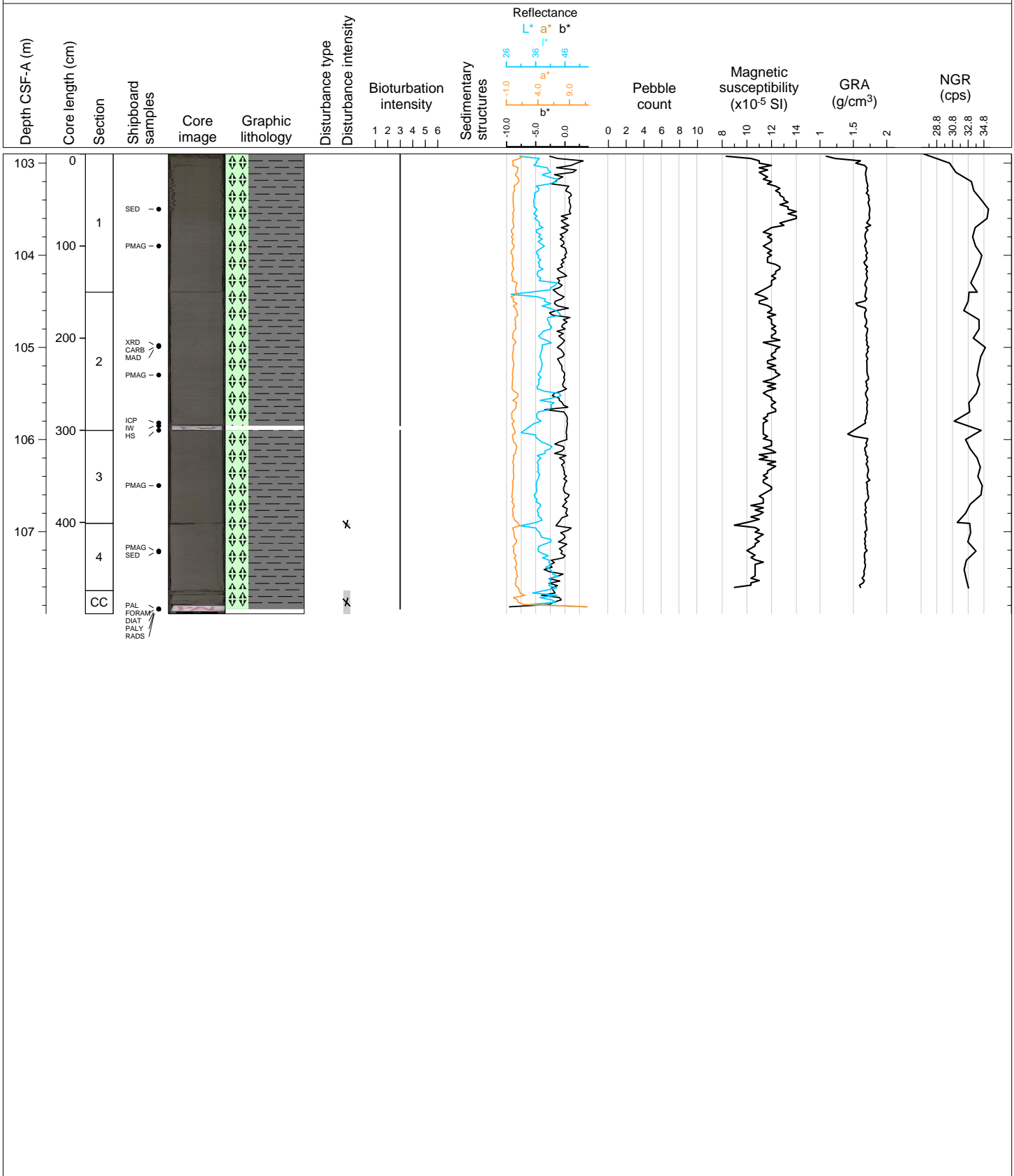
Hole 382-U1535A Core 14F, Interval 98.1-102.88 m (CSF-A)

mostly biosilicious bearing clay 10Y4/1 dark greenish gray. Section 1 graded glauconite sand 10Y3/1 very dark greenish gray with gravel at base.



Hole 382-U1535A Core 15F, Interval 102.9-107.89 m (CSF-A)

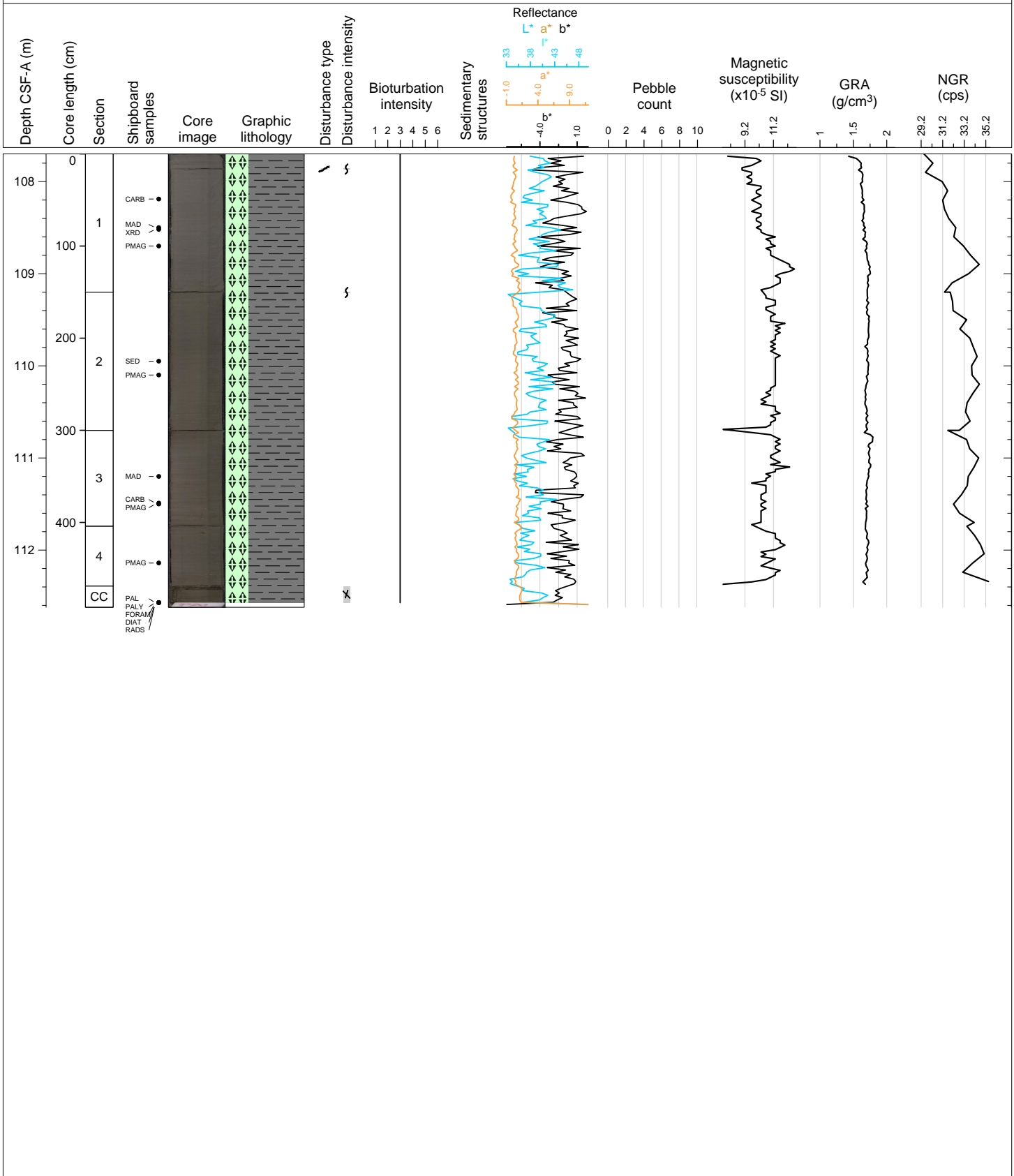
homogeneous 10Y5/1 greenish gray biosilica-bearing clay





Hole 382-U1535A Core 16F, Interval 107.7-112.62 m (CSF-A)

homogeneous 10Y4/1 dark greenish gray biosiliceous-bearing clay



Hole 382-U1535A Core 17F, Interval 112.5-113.95 m (CSF-A)

homogeneous 10Y4/1 dark greenish gray biosiliceous-bearing clay, with a 3 cm thick rock at the top that responds slightly to 10% HCl, dolomite or dolomite cement

