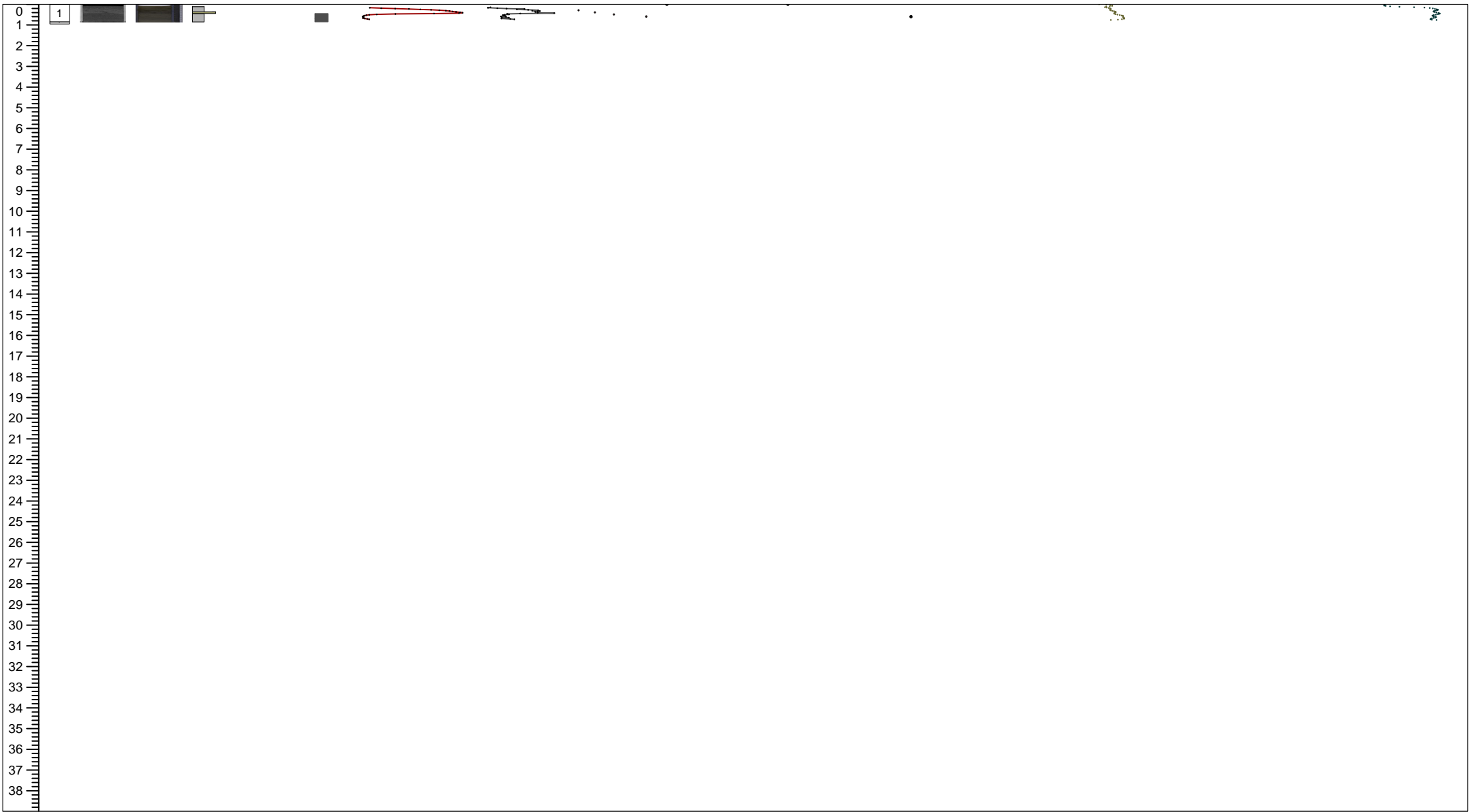
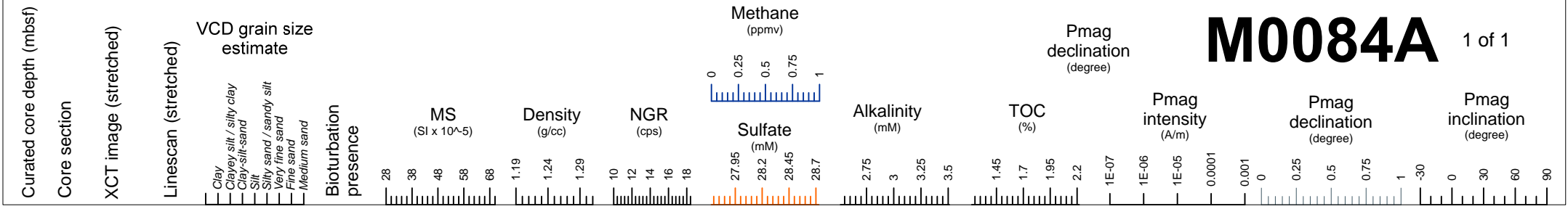
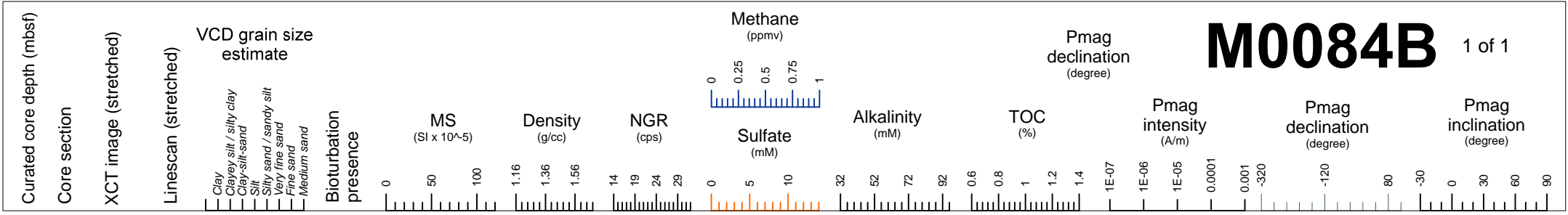


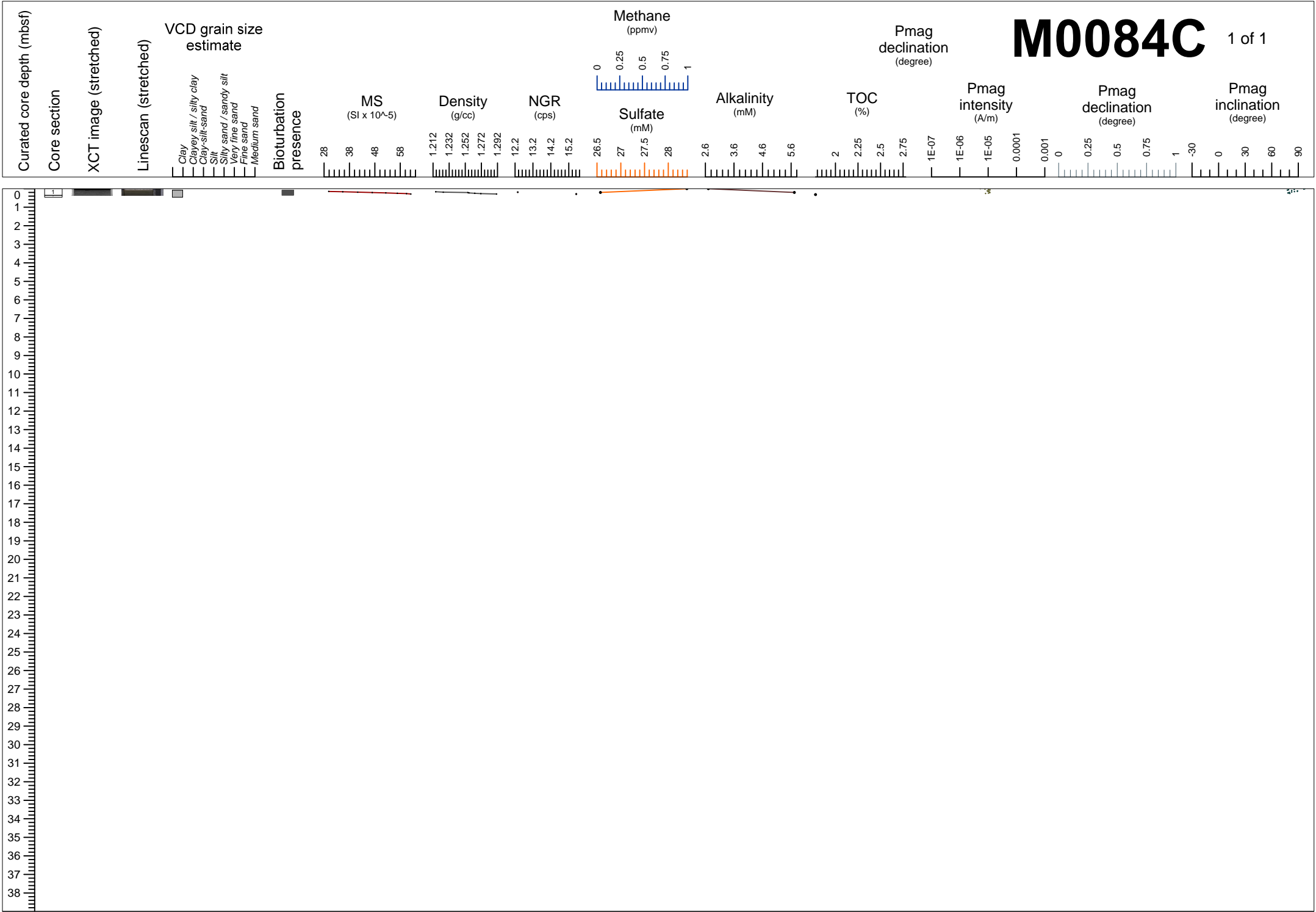
M0084A 1 of 1



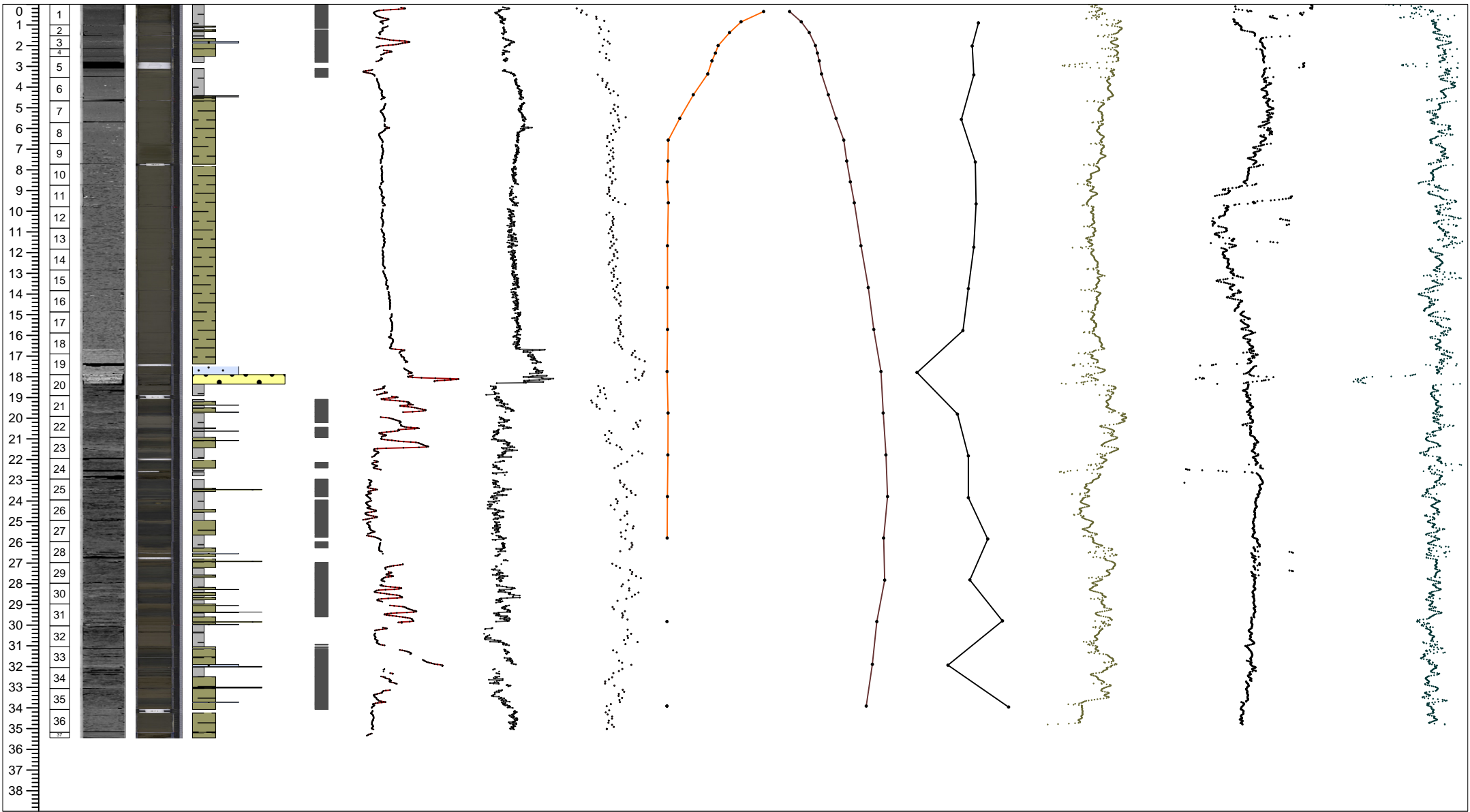
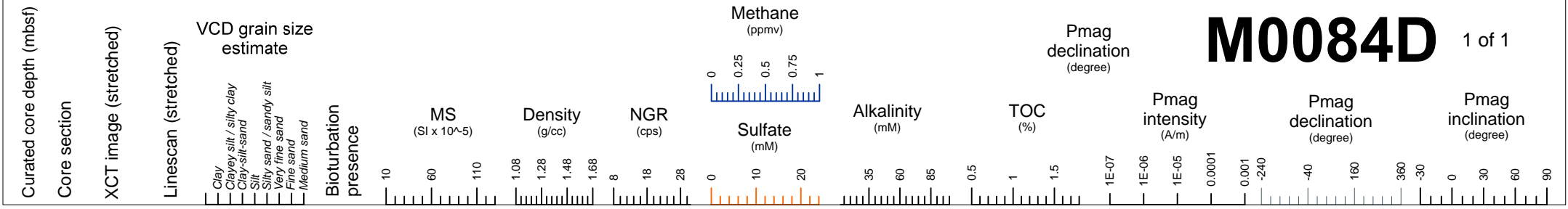
M0084B 1 of 1



M0084C 1 of 1

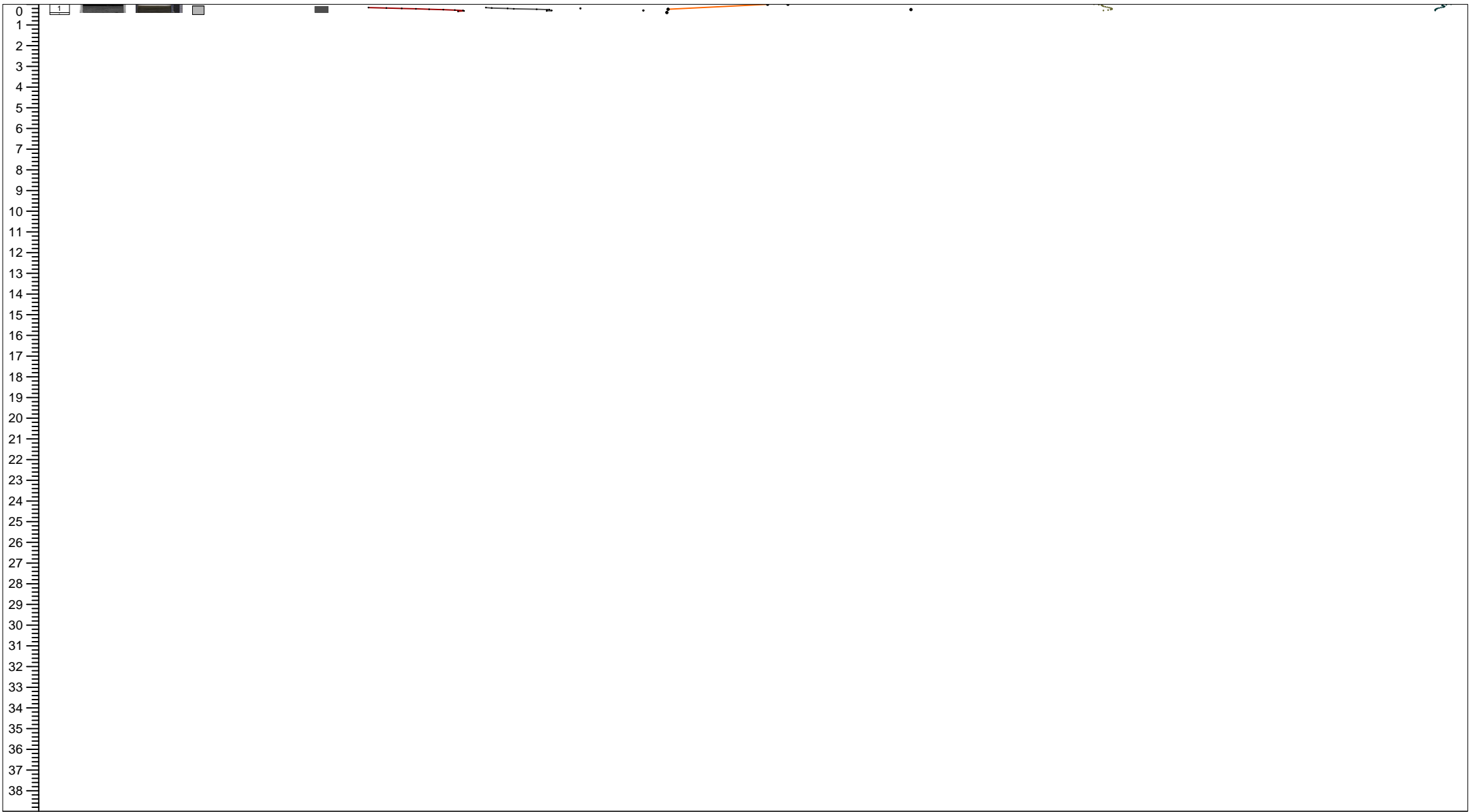
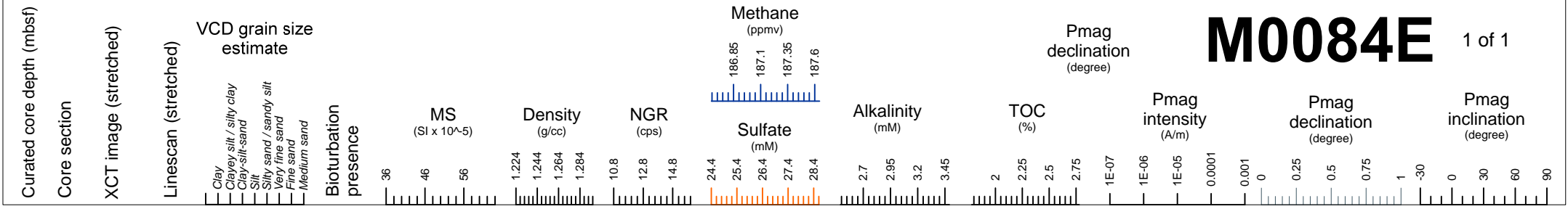


M0084D 1 of 1



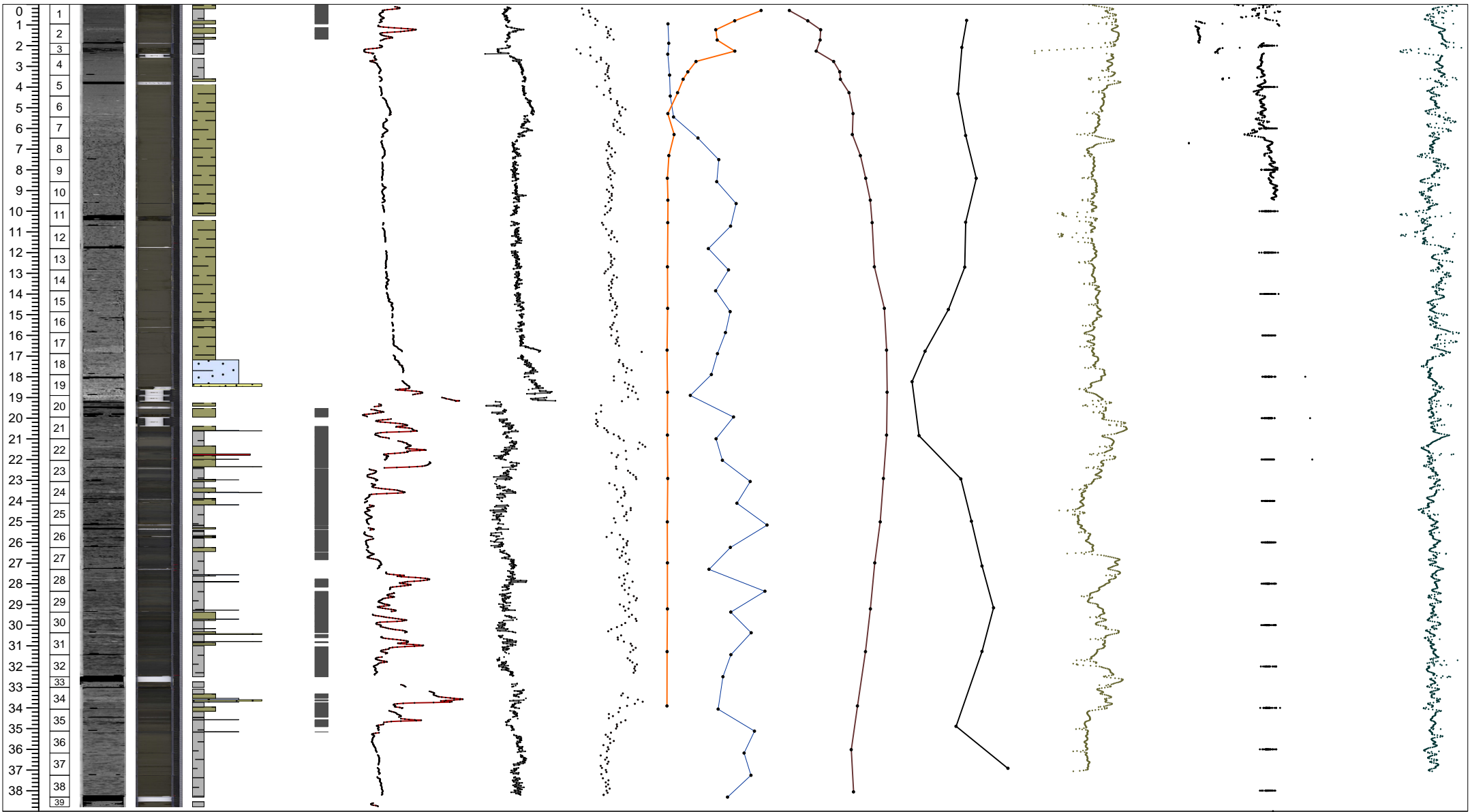
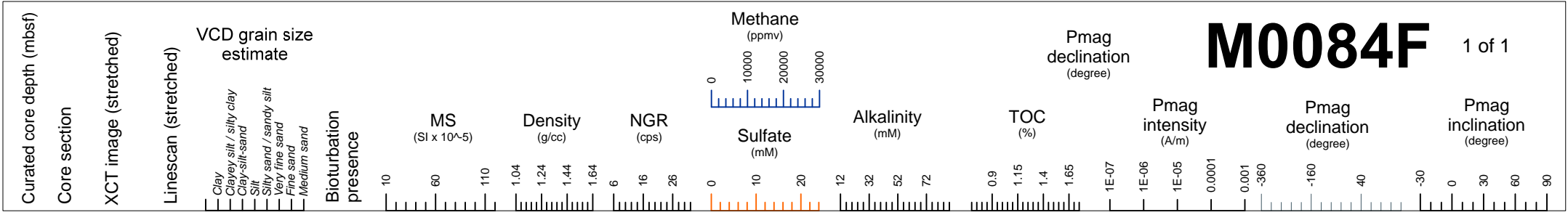
M0084E

1 of 1



M0084F

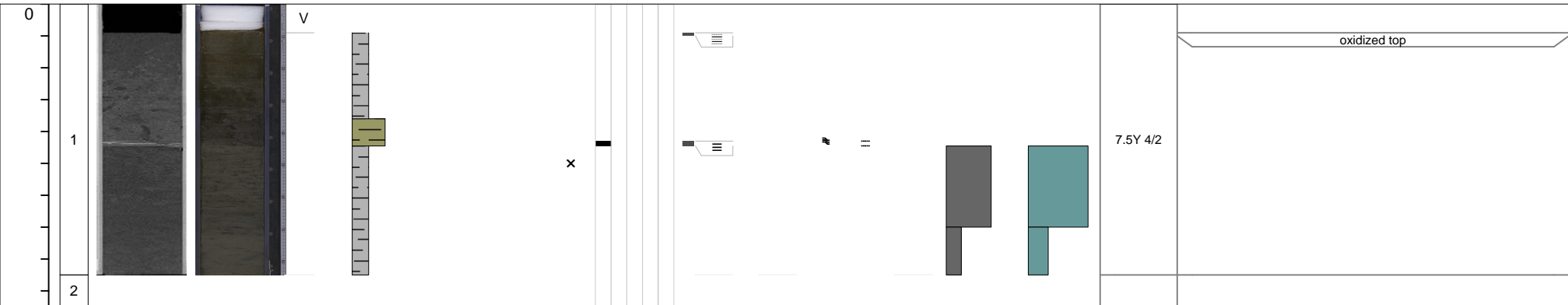
1 of 1



M0084A

1 of 1

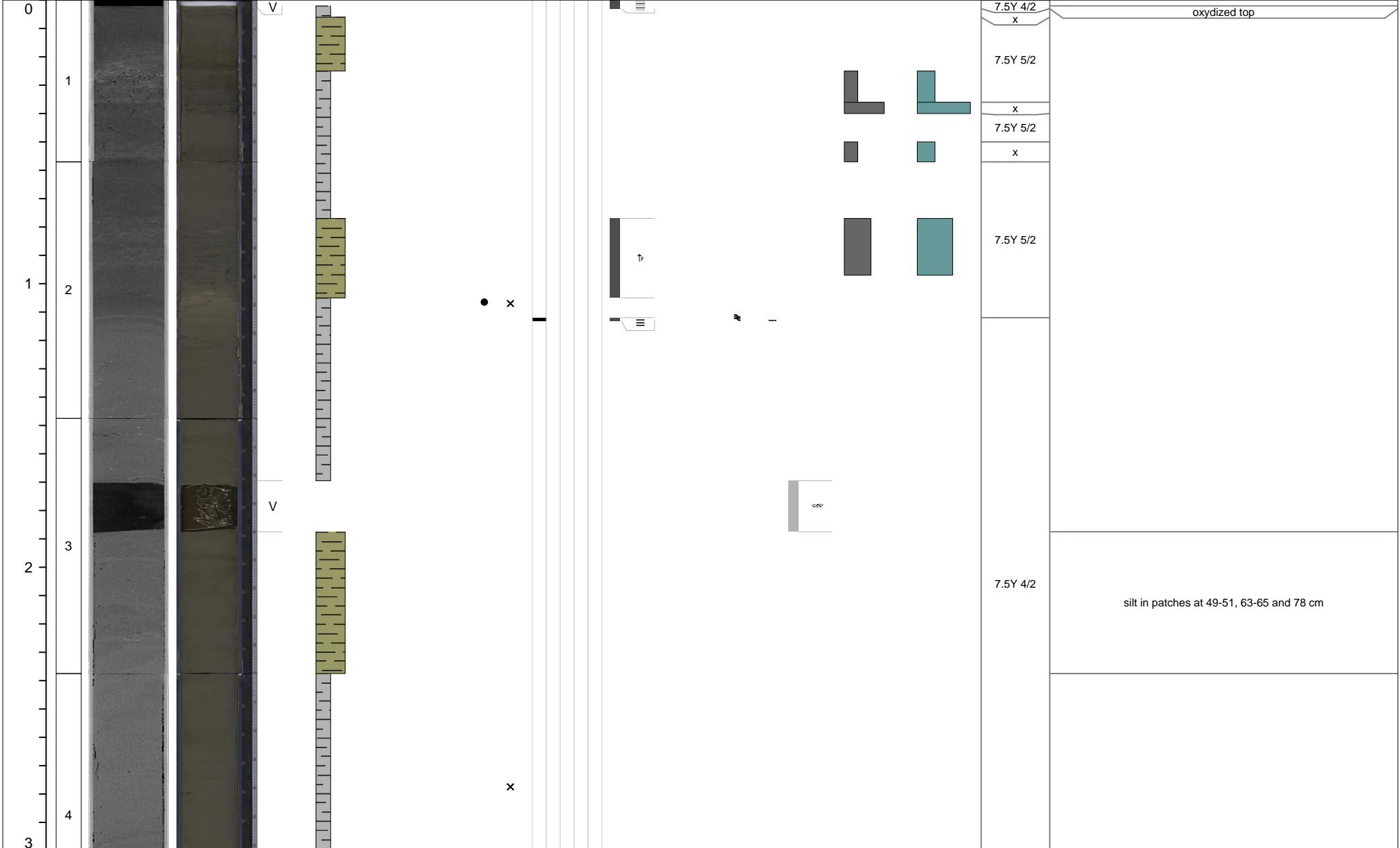
Curated core depth (mbsf)	Core section	XCT image (stretched)	Linescan (stretched)	Void (V) or whole round (WR) interval	VCD grain size estimate	Tephra VCD observations	Close up photos (midpoint)	Smear slides	Sedimentary structures	Accessories	Top contact	Base contact	Coring disturbance	Bioturbation intensity	Iron monosulfide abundance	Color	Additional Observations
					Clay Clayey silt / silty clay Clay-silt-sand Silt Silty sand / sandy silt Very fine sand Fine sand Medium sand				Parallel laminated Wavy laminated Convolute Chaotic Graded Other sedimentary structures				1 2 3 4 5	0 1 2 3			



M0084B

1 of 7

Curated core depth (mbsf)	Core section	XCT image (stretched)	Linescan (stretched)	Void (V) or whole round (WR) interval	VCD grain size estimate						Tephra VCD observations	Close up photos (midpoint)	Smear slides	Sedimentary structures				Other sedimentary structures	Accessories	Top contact	Base contact	Coring disturbance	Bioturbation intensity					Iron monosulfide abundance			Color	Additional Observations
					Clay	Clayey silt / silty clay	Clay-silt-sand	Silt	Silty sand / sandy silt	Very fine sand				Fine sand	Medium sand	1	2						3	4	5	0	1	2	3			



M0084B

2 of 7

Curated core depth (mbsf)	Core section	XCT image (stretched)	Linescan (stretched)	Void (V) or whole round (WR) interval	VCD grain size estimate						Tephra VCD observations	Close up photos (midpoint)	Smear slides	Sedimentary structures				Accessories	Top contact	Base contact	Coring disturbance	Bioturbation intensity					Iron monosulfide abundance			Color	Additional Observations
					Clay	Clayey silt / silty clay	Clay-silt-sand	Silt	Silty sand / sandy silt	Very fine sand				Fine sand	Medium sand	1	2					3	4	5	0	1	2	3			
3																												x			
5																												7.5Y 4/2	silty patches		
4																												x	Increasingly angular tilted silt patches (7.5Y 3/2) @14cm, 18-18cm, 37cm, 67-69cm		
6																												2.5Y 4/4	High angle angular tilted silt patches (7.5Y 3/2) @3cm, 29-34cm, 61cm, 73-84cm (fold)		
5																												7.5Y 5/2			
7																													High angle angular tilted silt patches (7.5Y 3/2) @44-45cm, 64cm, 75cm		
6																															

M0084B

3 of 7

Curated core depth (mbsf)	Core section	XCT image (stretched)	Linescan (stretched)	Void (V) or whole round (WR) interval	VCD grain size estimate							Tephra VCD observations	Close up photos (midpoint)	Smear slides	Sedimentary structures					Other sedimentary structures	Accessories	Top contact	Base contact	Coring disturbance	Bioturbation intensity					Iron monosulfide abundance			Color	Additional Observations
					Clay	Clayey silt / silty clay	Clay-silt-sand	Silt	Silty sand / sandy silt	Very fine sand	Fine sand				Medium sand	1	2	3	4						5	0	1	2	3					

6																																					
7	8																																				High angle angular tilted silt patches (7.5Y 3/2) @12 cm, 62 cm, 76-84 cm, 98 cm
8	9																																			vertically tilted silt patches (7.5Y 3/2) distributed everywhere at random	
9	10																																			rare silt patches	

M0084B

4 of 7

Additional Observations

Curated core depth (mbsf)	Core section	XCT image (stretched)	Linescan (stretched)	Void (V) or whole round (WR) interval	VCD grain size estimate						Tephra VCD observations	Close up photos (midpoint)	Smear slides	Sedimentary structures				Accessories	Top contact	Base contact	Coring disturbance	Bioturbation intensity					Iron monosulfide abundance			Color	Additional Observations
					Clay	Clayey silt / silty clay	Clay-silt-sand	Silt	Silty sand / sandy silt	Very fine sand				Fine sand	Medium sand	Parallel laminated	Wavy laminated					Convolute	Chaotic	Graded	Other sedimentary structures	1	2	3	4		
9																														Numerous, deformed, silt patches (7.5Y 3/2) 54 cm, 85 cm, 92 cm	
10	11																													rare silt patches	
11	12																												7.5Y 5/2	silt patches	
																														deformed silt patches	
																														silt patches	
12																													7.5Y 5/2	silt patches, dense	

Curated core depth (mbsf)	Core section	XCT image (stretched)	Linescan (stretched)	Void (V) or whole round (WR) interval	VCD grain size estimate						Sedimentary structures				Accessories					Top contact					Base contact					Coring disturbance					Bioturbation intensity					Iron monosulfide abundance					Color	Additional Observations
					Clay	Clayey silt / silty clay	Clay-silt-sand	Silt	Silty sand / sandy silt	Very fine sand	Fine sand	Medium sand																																		

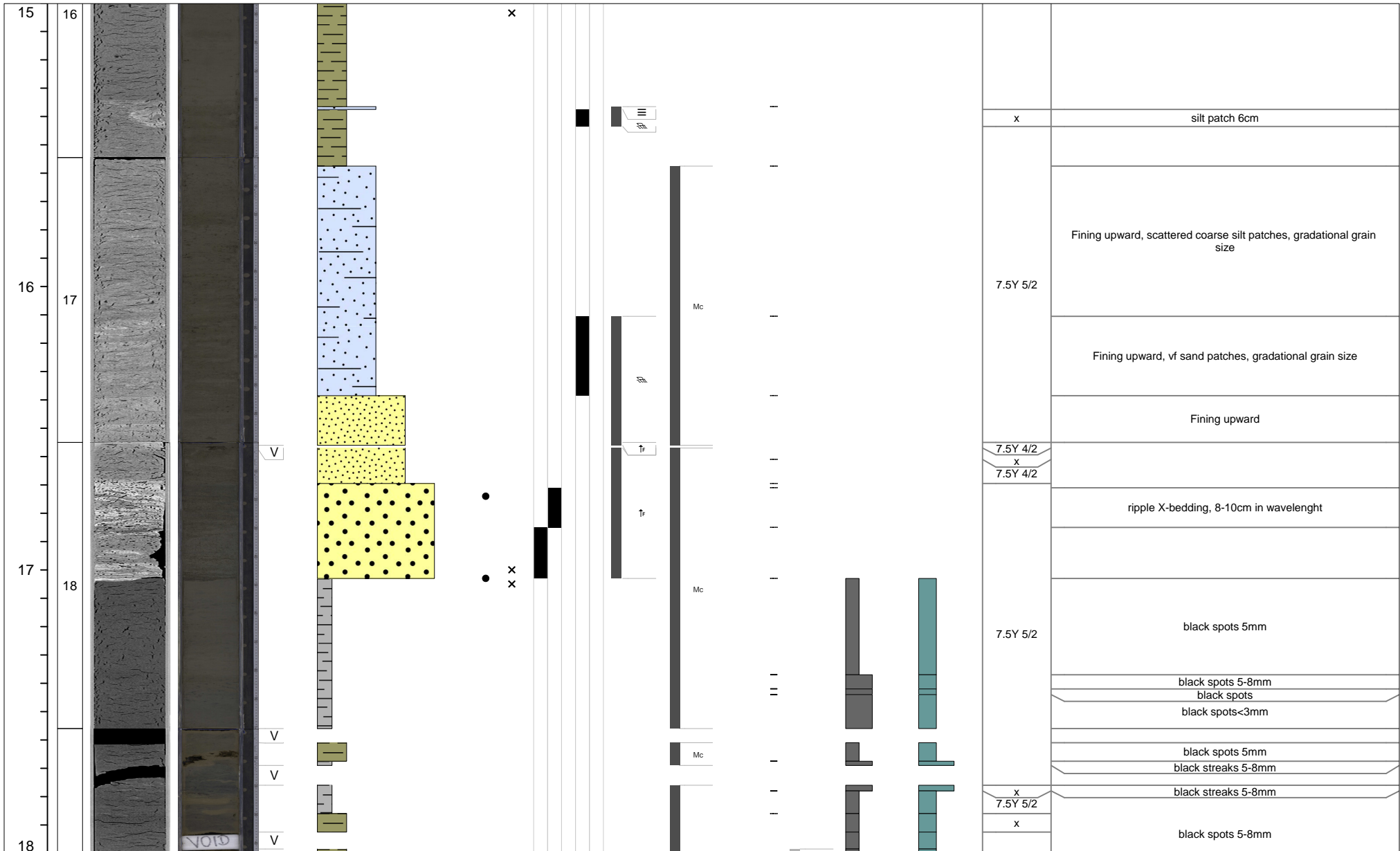
M0084B

5 of 7

12	13													7.5Y 4/3	silt patches
13	14														Cm-scale blocky, silt patches with sharp boundaries @ 5 cm, 45cm, 70-75 cm, 96-101 cm
14	15														7.5Y 5/2

M0084B

6 of 7



M0084B

7 of 7

Curated core depth (mbsf)	Core section	XCT image (stretched)	Linescan (stretched)	Void (V) or whole round (WR) interval	VCD grain size estimate						Tephra VCD observations	Close up photos (midpoint)	Smear slides	Sedimentary structures					Other sedimentary structures	Accessories	Top contact	Base contact	Coring disturbance	Bioturbation intensity					Iron monosulfide abundance			Color	Additional Observations
					Clay	Clayey silt / silty clay	Clay-silt-sand	Silt	Silty sand / sandy silt	Very fine sand				Fine sand	Medium sand	1	2	3						4	5	0	1	2	3				

18	19			V																						7.5Y 5/2	
																									x	black spots 5-8mm	
				V																					7.5Y 5/2	black spots 5-8mm black smudge	
				V																					7.5Y 4/2	black spots 5-10 mm	
	19			V																					7.5Y 4/2	black spots 5-8mm	
	20			V																				x			
																									7.5Y 4/2	interbedded with 1mm silt laminae 1 cm shell fragment	
				V																					7.5Y 5/2	black patches bioturbated	
				V																				x	7.5Y 5/2	black stripes 2cm	
	21			V																					7.5Y 5/2	in bag	

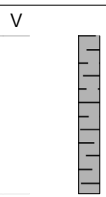
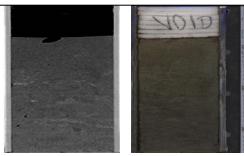
M0084C

1 of 1

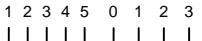
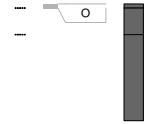
- Curated core depth (mbsf)
- Core section
- XCT image (stretched)
- Linescan (stretched)
- Void (V) or whole round (WR) interval
- Clay
- Clayey silt / silty clay
- Clay-silt-sand
- Silt
- Silty sand / sandy silt
- Very fine sand
- Fine sand
- Medium sand
- VCD grain size estimate
- Tephra VCD observations
- Close up photos (midpoint)
- Smear slides
- Parallel laminated
- Wavy laminated
- Convolute
- Chaotic
- Graded
- Other sedimentary structures
- Accessories
- Top contact
- Base contact
- Coring disturbance
- Bioturbation intensity
- Iron monosulfide abundance
- Color

Color

Additional Observations



x
+



7.5Y 4/2	
	black spot 2mm
7.5Y 5/2	black spots 5-8mm, grayish olive patches
	in bag

M0084D

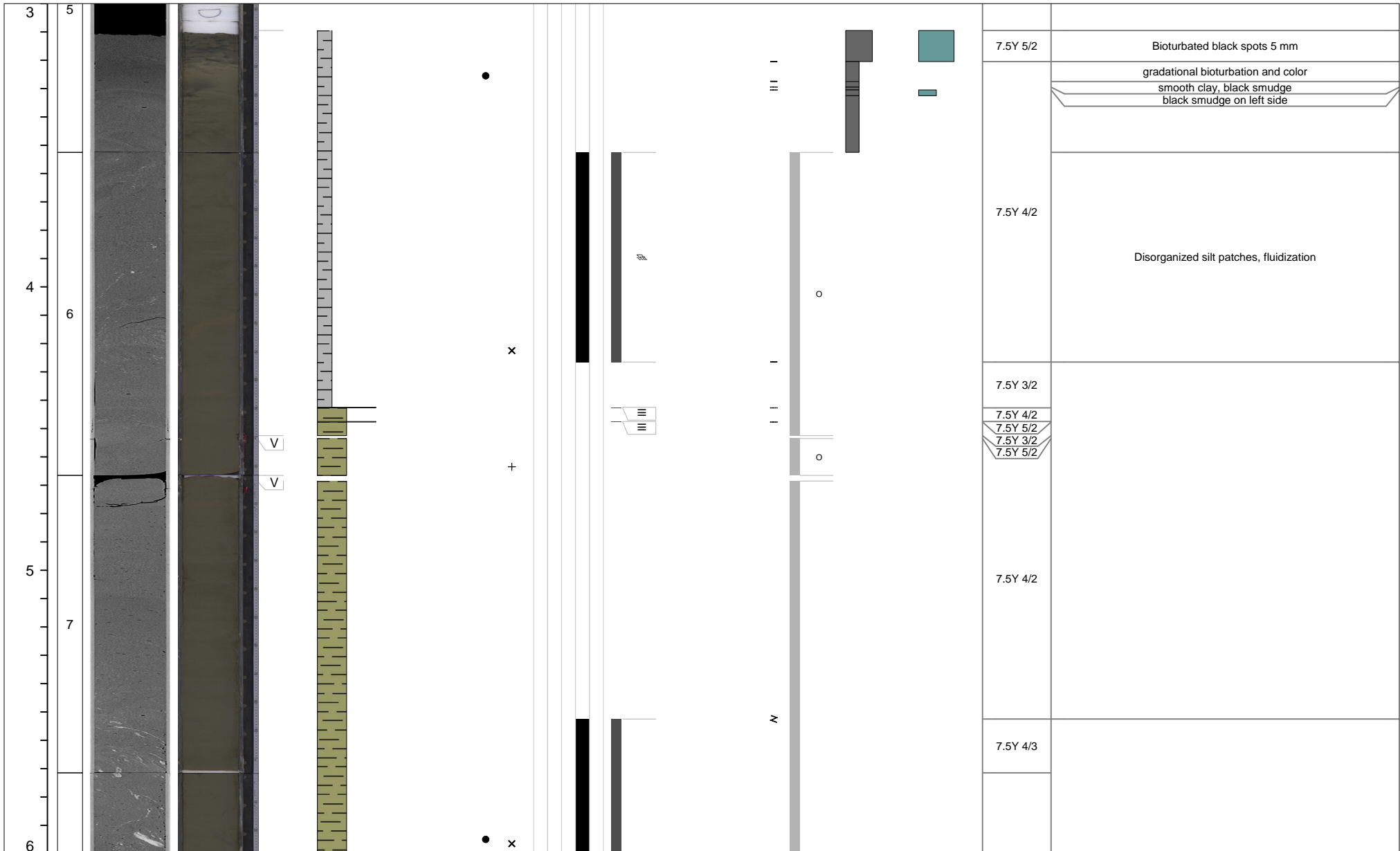
1 of 12

Curated core depth (mbsf)	Core section	XCT image (stretched)	Linescan (stretched)	Void (V) or whole round (WR) interval	VCD grain size estimate								Tephra VCD observations	Close up photos (midpoint)	Smear slides	Sedimentary structures						Accessories	Top contact	Base contact	Coring disturbance	Bioturbation intensity					Iron monosulfide abundance			Color	Additional Observations
					Clay	Clayey silt / silty clay	Clay-silt-sand	Silt	Silty sand / sandy silt	Very fine sand	Fine sand	Medium sand				Parallel laminated	Wavy laminated	Convolute	Chaotic	Graded	Other sedimentary structures					1	2	3	4	5	0	1	2		

0				V																					7.5Y 5/2	black spots 5-8mm, color change
1																									7.5Y 3/2	Bioturbated black spots 5-8mm
1																										Bioturbated black smudge
																										Bioturbated black spots 10-20mm
																										black spot 3mm
																										Bioturbated black spots 3 mm
2																									7.5Y 4/2	Bioturbated black spots 5 mm
																									7.5Y 4/3	Bioturbated black spots 3 mm
																										Bioturbated black spots 5-15mm
																									7.5Y 4/2	Bioturbated black spots 5 mm, open pores
				V																					7.5Y 5/2	Bioturbated black spots 3 mm
3																									x	Bioturbated black spots 5-8mm
																									7.5Y 4/3	Bioturbated black spots 5-10mm
																									7.5Y 4/2	Bioturbated black spots 5 mm
2																									7.5Y 3/2	Bioturbated black spots 8-10mm
																									7.5Y 4/2	Bioturbated black spots 3 mm
				V																					x	Bioturbated black spots 3-5 mm
4																									7.5Y 4/3	Bioturbated black spots 5-8mm
																										Bioturbated black spots 3-5 mm
																										black streaks 3-5 mm
																										Bioturbated black spots 3 mm
																										Bioturbated black spots 5 mm
																									7.5Y 4/2	Bioturbated black spots 5-15 mm with black smudge
3				V																						

M0084D

2 of 12



M0084D

3 of 12

Curated core depth (mbsf)	Core section	XCT image (stretched)	Linescan (stretched)	Void (V) or whole round (WR) interval	VCD grain size estimate							Tephra VCD observations	Close up photos (midpoint)	Smear slides	Sedimentary structures				Accessories	Top contact	Base contact	Coring disturbance	Bioturbation intensity					Iron monosulfide abundance			Color	Additional Observations
					Clay	Clayey silt / silty clay	Clay-silt-sand	Silt	Silty sand / sandy silt	Very fine sand	Fine sand				Medium sand	1	2	3					4	5	0	1	2	3				
6																																
8																																
7																																
9				V WR																												
10																																
9																																

Disorganized silt patches/streaks, fluidization

7.5Y 4/3

WR sample

M0084D

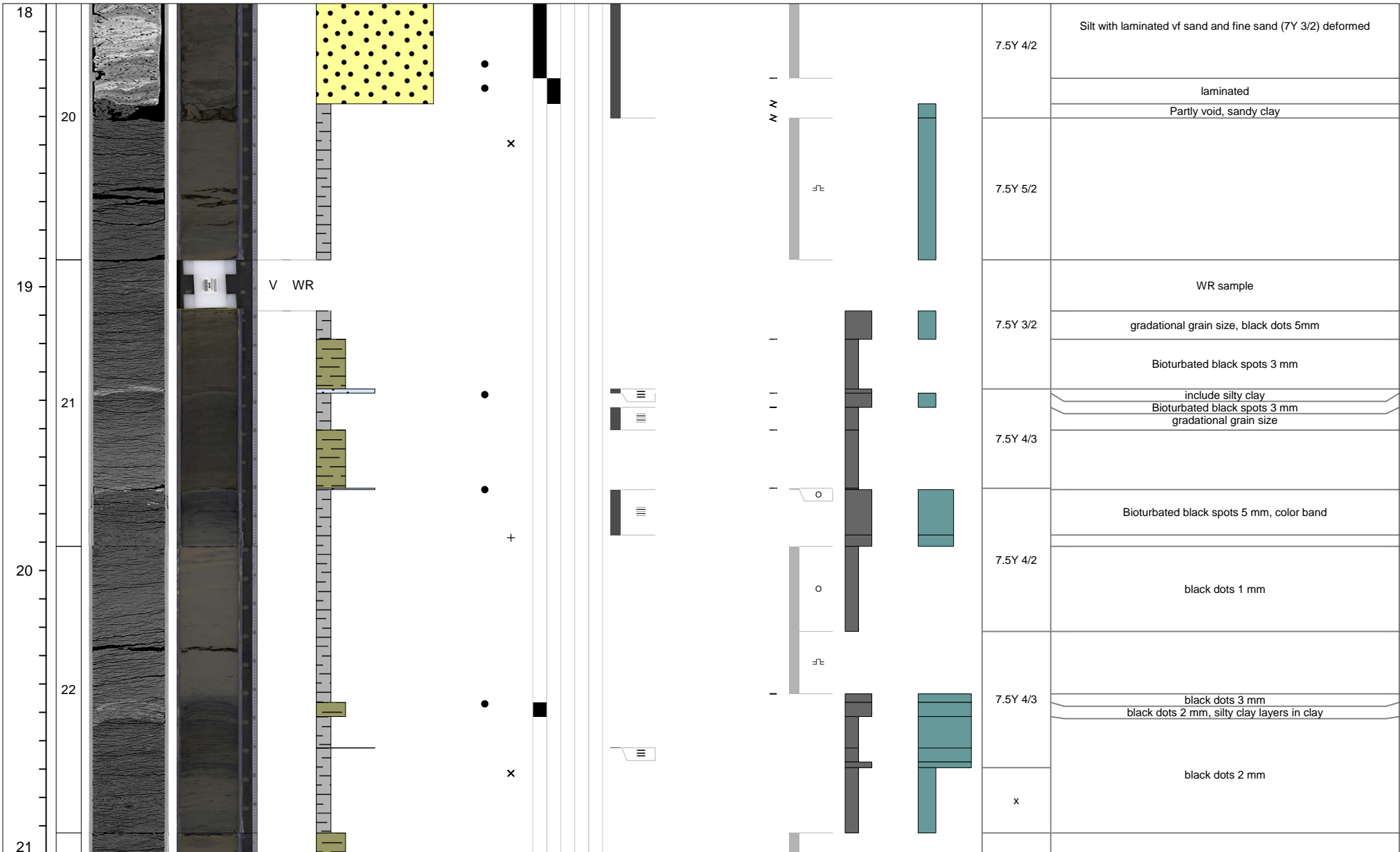
5 of 12

Curated core depth (mbsf)	Core section	XCT image (stretched)	Linescan (stretched)	Void (V) or whole round (WR) interval	VCD grain size estimate							Tephra VCD observations	Close up photos (midpoint)	Smear slides	Sedimentary structures				Other sedimentary structures	Accessories	Top contact	Base contact	Coring disturbance	Bioturbation intensity					Iron monosulfide abundance			Color	Additional Observations
					Clay	Clayey silt / silty clay	Clay-silt-sand	Silt	Silty sand / sandy silt	Very fine sand	Fine sand				Medium sand	1	2	3						4	5	0	1	2	3				
12																																	
13																																	
14																																	
15																																	
16																																	
15																																	

M0084D

7 of 12

Curated core depth (mbsf)	Core section	XCT image (stretched)	Linescan (stretched)	Void (V) or whole round (WR) interval	VCD grain size estimate							Tephra VCD observations	Close up photos (midpoint)	Smear slides	Sedimentary structures				Accessories	Top contact	Base contact	Coring disturbance	Bioturbation intensity					Iron monosulfide abundance			Color	Additional Observations
					Clay	Clayey silt / silty clay	Clay-silt-sand	Silt	Silty sand / sandy silt	Very fine sand	Fine sand				Medium sand	Parallel laminated	Wavy laminated	Convolute					Chaotic	Graded	Other sedimentary structures	1	2	3	4	5		



M0084D

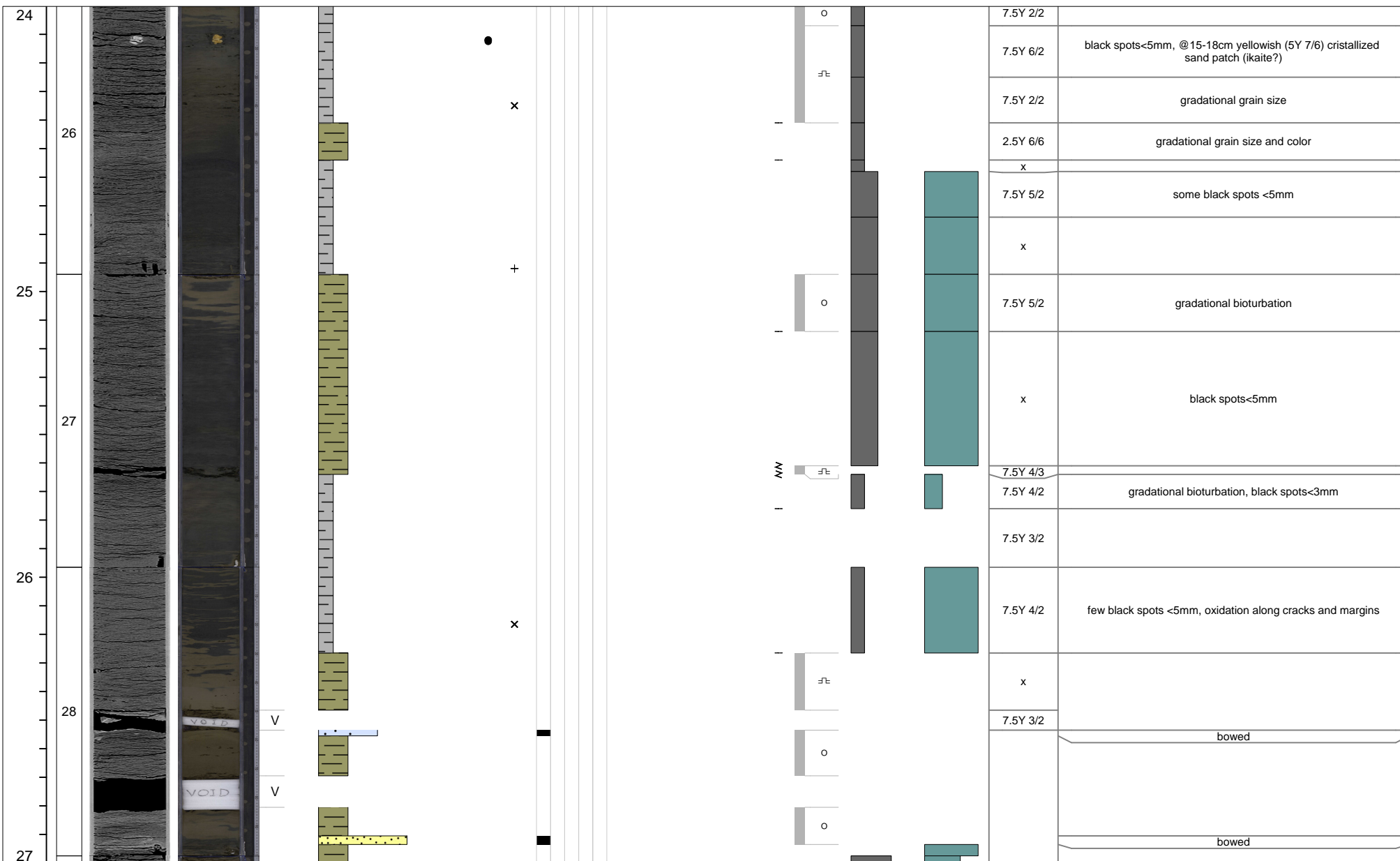
8 of 12

Curated core depth (mbsf)	Core section	XCT image (stretched)	Linescan (stretched)	Void (V) or whole round (WR) interval	VCD grain size estimate						Tephra VCD observations	Close up photos (midpoint)	Smear slides	Sedimentary structures					Other sedimentary structures	Accessories	Top contact	Base contact	Coring disturbance	Bioturbation intensity					Iron monosulfide abundance			Color	Additional Observations
					Clay	Clayey silt / silty clay	Clay-silt-sand	Silt	Silty sand / sandy silt	Very fine sand				Fine sand	Medium sand	Parallel laminated	Wavy laminated	Convolute						Chaotic	Graded	1	2	3	4	5	0		
21																											7.5Y 4/3	cracks					
23																										7.5Y 5/3	gradational color grain size						
22				V																						7.5Y 4/3	gradational color						
24				V																						x							
24				V																						7.5Y 4/2	open pores, black patches <5mm						
23				V																						7.5Y 4/2							
25																										2.5Y 6/6	some black spots <5mm						
24																										7.5Y 4/3	with silt						
																										7.5Y 4/3	black spots <3mm						
																										2.5Y 6/6	black spots <3mm, mottling						
																										7.5Y 4/2	black spots <3mm, mottling						

M0084D

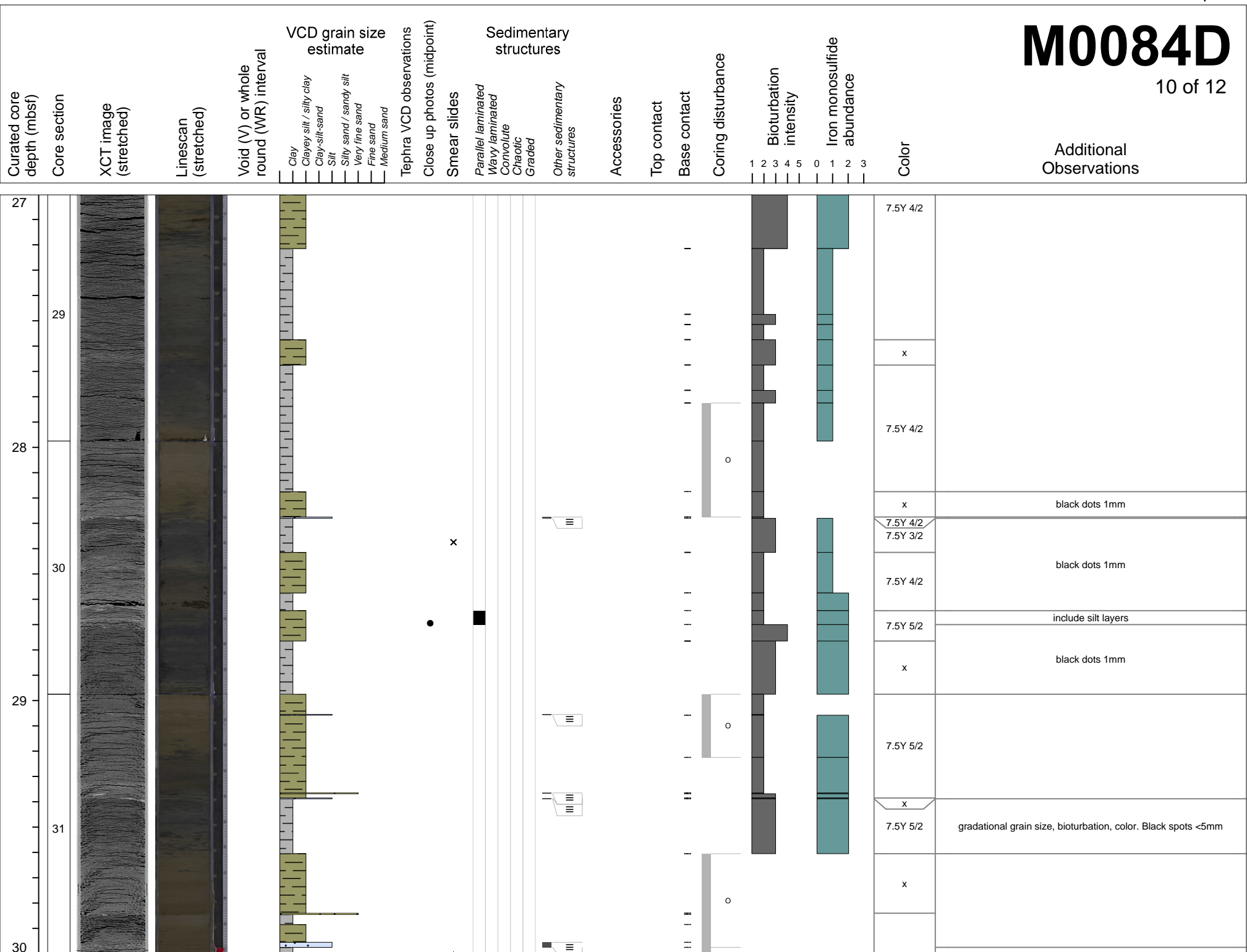
9 of 12

Curated core depth (mbsf)	Core section	XCT image (stretched)	Linescan (stretched)	Void (V) or whole round (WR) interval	VCD grain size estimate							Tephra VCD observations	Close up photos (midpoint)	Smear slides	Sedimentary structures				Accessories	Top contact	Base contact	Coring disturbance	Bioturbation intensity					Iron monosulfide abundance			Color	Additional Observations
					Clay	Clayey silt / silty clay	Clay-silt-sand	Silt	Silty sand / sandy silt	Very fine sand	Fine sand				Medium sand	Parallel laminated	Wavy laminated	Convolute					Chaotic	Graded	Other sedimentary structures	1	2	3	4	5		



M0084D

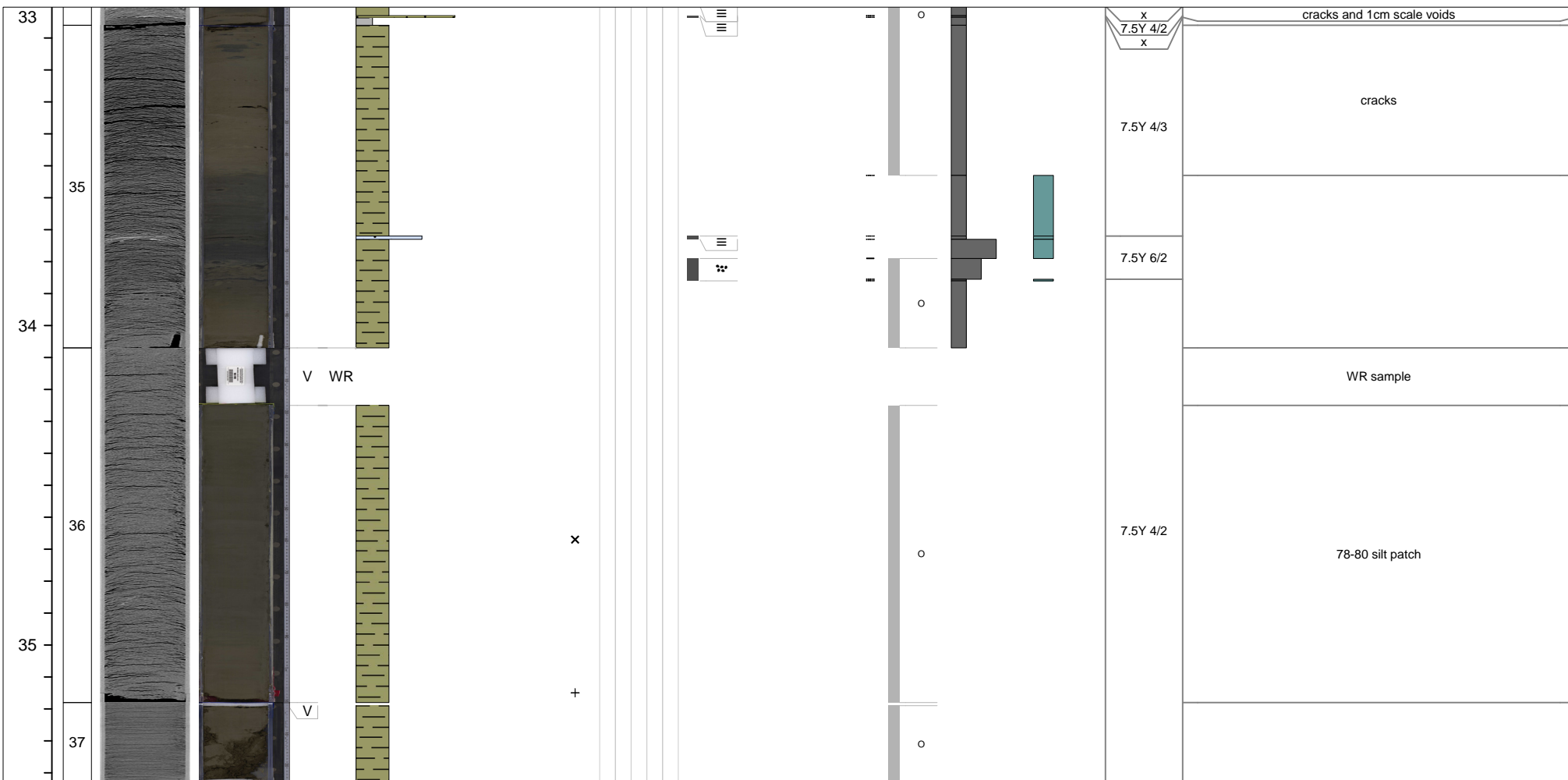
10 of 12



M0084D

12 of 12

Curated core depth (mbsf)	Core section	XCT image (stretched)	Linescan (stretched)	Void (V) or whole round (WR) interval	VCD grain size estimate						Tephra VCD observations	Close up photos (midpoint)	Smear slides	Sedimentary structures				Other sedimentary structures	Accessories	Top contact	Base contact	Coring disturbance	Bioturbation intensity					Iron monosulfide abundance			Color	Additional Observations
					Clay	Clayey silt / silty clay	Clay-silt-sand	Silt	Silty sand / sandy silt	Very fine sand				Fine sand	Medium sand	1	2						3	4	5	0	1	2	3			



M0084E

1 of 1

Curated core depth (mbsf)	Core section	XCT image (stretched)	Linescan (stretched)	Void (V) or whole round (WR) interval	VCD grain size estimate	Sedimentary structures	Accessories	Top contact	Base contact	Coring disturbance	Bioturbation intensity	Iron monosulfide abundance	Color	Additional Observations
					Clay Clayey silt / silty clay Clay-silt-sand Silt Silty sand / sandy silt Very fine sand Fine sand Medium sand	Parallel laminated Wavy laminated Convolute Chaotic Graded Other sedimentary structures					1 2 3 4 5 0 1 2 3			

0				V									7.5Y 4/2	
1													7.5Y 4/3	black spots <5 mm
2														in bag

M0084F

2 of 13

Curated core depth (mbsf)	Core section	XCT image (stretched)	Linescan (stretched)	Void (V) or whole round (WR) interval	VCD grain size estimate	Tephra VCD observations	Close up photos (midpoint)	Smear slides	Sedimentary structures	Other sedimentary structures	Accessories	Top contact	Base contact	Coring disturbance	Bioturbation intensity	Iron monosulfide abundance	Color	Additional Observations
					Clay Clayey silt / silty clay Clay-silt-sand Silt Silty sand / sandy silt Very fine sand Fine sand Medium sand				Parallel laminated Wavy laminated Convolute Chaotic Graded					1 2 3 4 5	0 1 2 3			

3																		
5				V														
4																		
6																		
5																		
6																		
7																		
6																		

M0084F

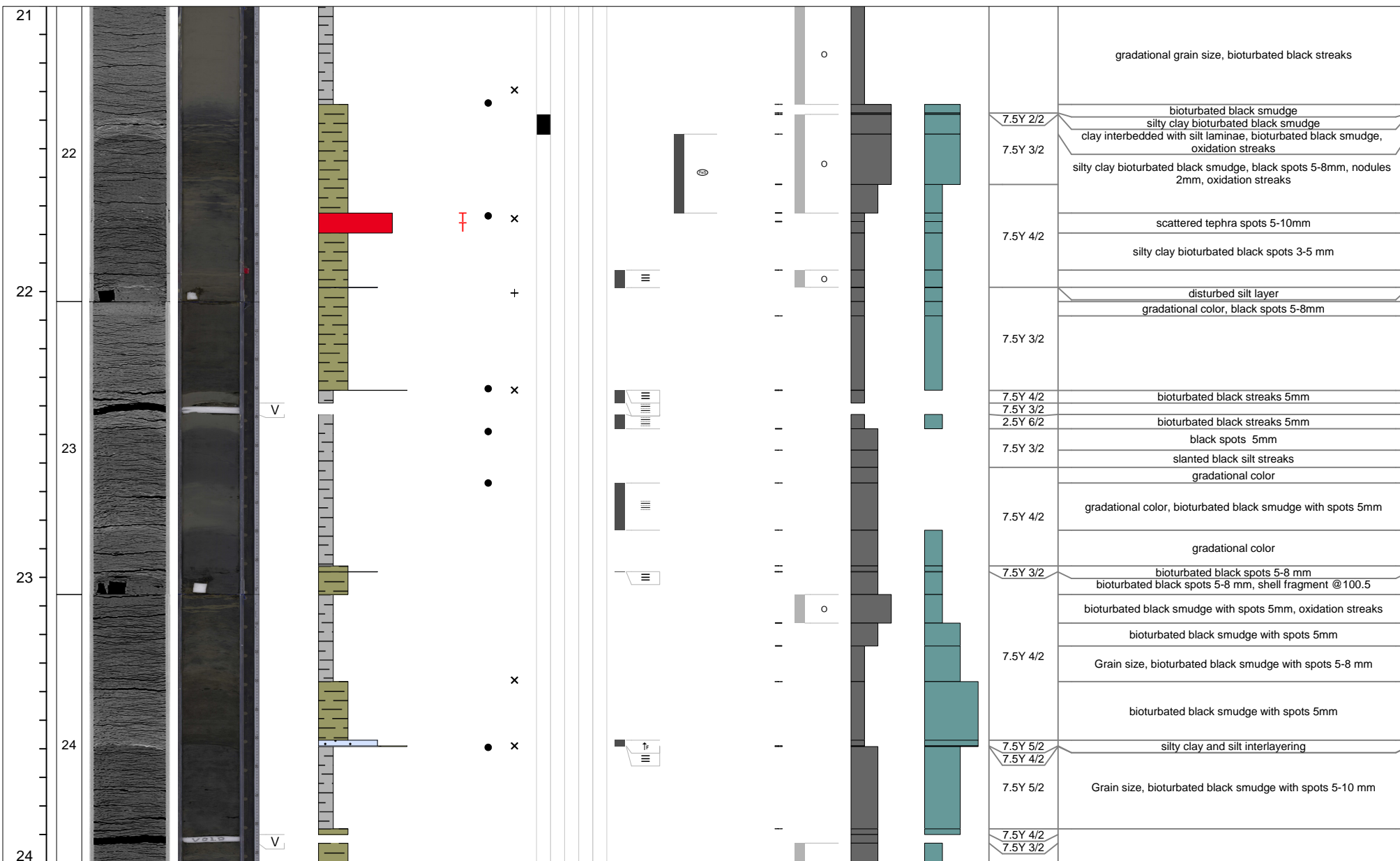
3 of 13

Curated core depth (mbsf)	Core section	XCT image (stretched)	Linescan (stretched)	Void (V) or whole round (WR) interval	VCD grain size estimate						Tephra VCD observations	Close up photos (midpoint)	Smear slides	Sedimentary structures				Accessories	Top contact	Base contact	Coring disturbance	Bioturbation intensity					Iron monosulfide abundance			Color	Additional Observations
					Clay	Clayey silt / silty clay	Clay-silt-sand	Silt	Silty sand / sandy silt	Very fine sand				Fine sand	Medium sand	Parallel laminated	Wavy laminated					Convolute	Chaotic	Graded	Other sedimentary structures	1	2	3	4		
6																															
7	8																														
8	9																												liquefaction, deformed silt streaks and patches		
9																															

M0084F

8 of 13

Curated core depth (mbsf)	Core section	XCT image (stretched)	Linescan (stretched)	Void (V) or whole round (WR) interval	VCD grain size estimate						Tephra VCD observations	Close up photos (midpoint)	Smear slides	Sedimentary structures					Accessories	Top contact	Base contact	Coring disturbance	Bioturbation intensity					Iron monosulfide abundance			Color	Additional Observations
					Clay	Clayey silt / silty clay	Clay-silt-sand	Silt	Silty sand / sandy silt	Very fine sand				Fine sand	Medium sand	Parallel laminated	Wavy laminated	Convolute					Chaotic	Graded	Other sedimentary structures	1	2	3	4	5		



M0084F

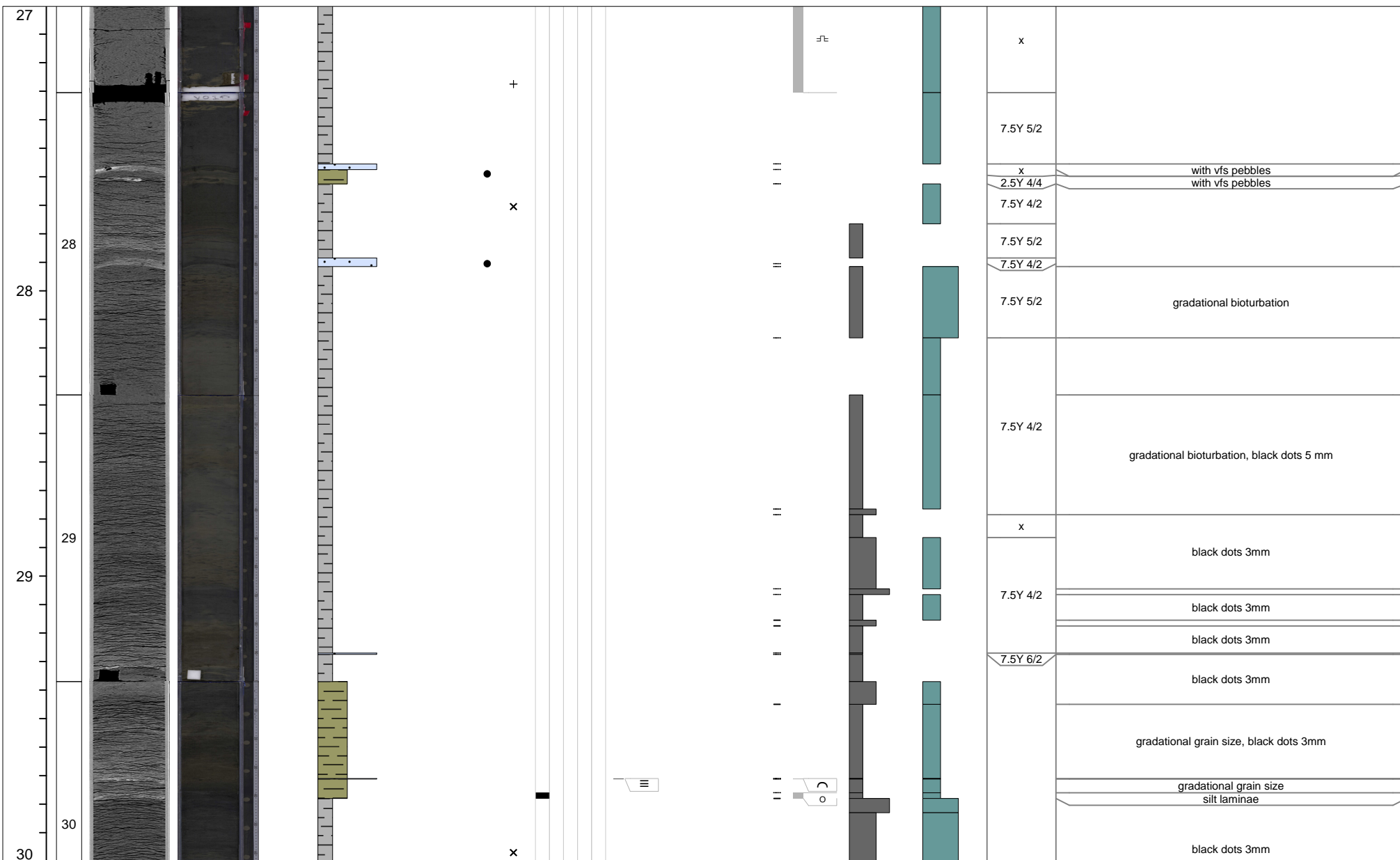
9 of 13

Curated core depth (mbsf)	Core section	XCT image (stretched)	Linescan (stretched)	Void (V) or whole round (WR) interval	VCD grain size estimate						Tephra VCD observations	Close up photos (midpoint)	Smear slides	Sedimentary structures				Other sedimentary structures	Accessories	Top contact	Base contact	Coring disturbance	Bioturbation intensity					Iron monosulfide abundance			Color	Additional Observations
					Clay	Clayey silt / silty clay	Clay-silt-sand	Silt	Silty sand / sandy silt	Very fine sand				Fine sand	Medium sand	1	2						3	4	5	0	1	2	3			
24																										7.5Y 4/3						
																										x	black dots 3mm					
																									7.5Y 3/2							
																									x							
																									7.5Y 3/2	black dots 3mm						
																											black dots 5mm					
																									7.5Y 4/2	black dots 5mm						
																									7.5Y 3/2							
																									7.5Y 4/2	black dots 3mm						
				V																					7.5Y 3/2	black dots 1mm, gradational grain size						
																									x	black dots 1mm						
				V																					7.5Y 3/2							
																									x	black dots 1mm						
				V																					7.5Y 4/2	black dots 3mm						
																											black dots 3mm, gradational grain size					
																									7.5Y 5/2	black dots 3mm, gradational grain size						
				V																												
																										7.5Y 4/2	black dots 3mm					
																											gradational bioturbation color					
																										7.5Y 5/2						
27																																
27																																

M0084F

10 of 13

Curated core depth (mbsf)	Core section	XCT image (stretched)	Linescan (stretched)	Void (V) or whole round (WR) interval	VCD grain size estimate						Tephra VCD observations	Close up photos (midpoint)	Smear slides	Sedimentary structures				Accessories	Top contact	Base contact	Coring disturbance	Bioturbation intensity					Iron monosulfide abundance			Color	Additional Observations
					Clay	Clayey silt / silty clay	Clay-silt-sand	Silt	Silty sand / sandy silt	Very fine sand				Fine sand	Medium sand	Parallel laminated	Wavy laminated					Convolute	Chaotic	Graded	Other sedimentary structures	1	2	3	4		



M0084F

12 of 13

