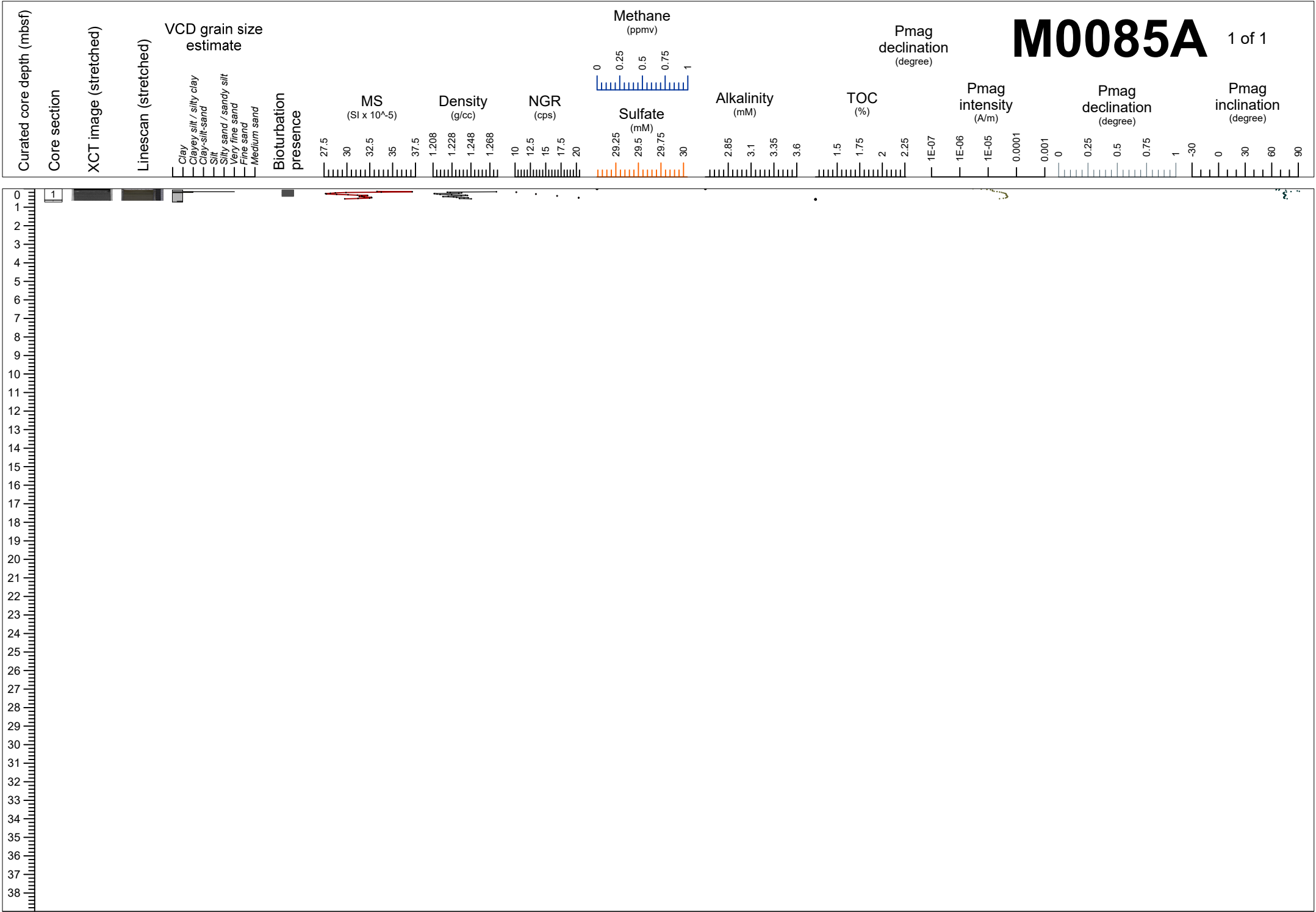
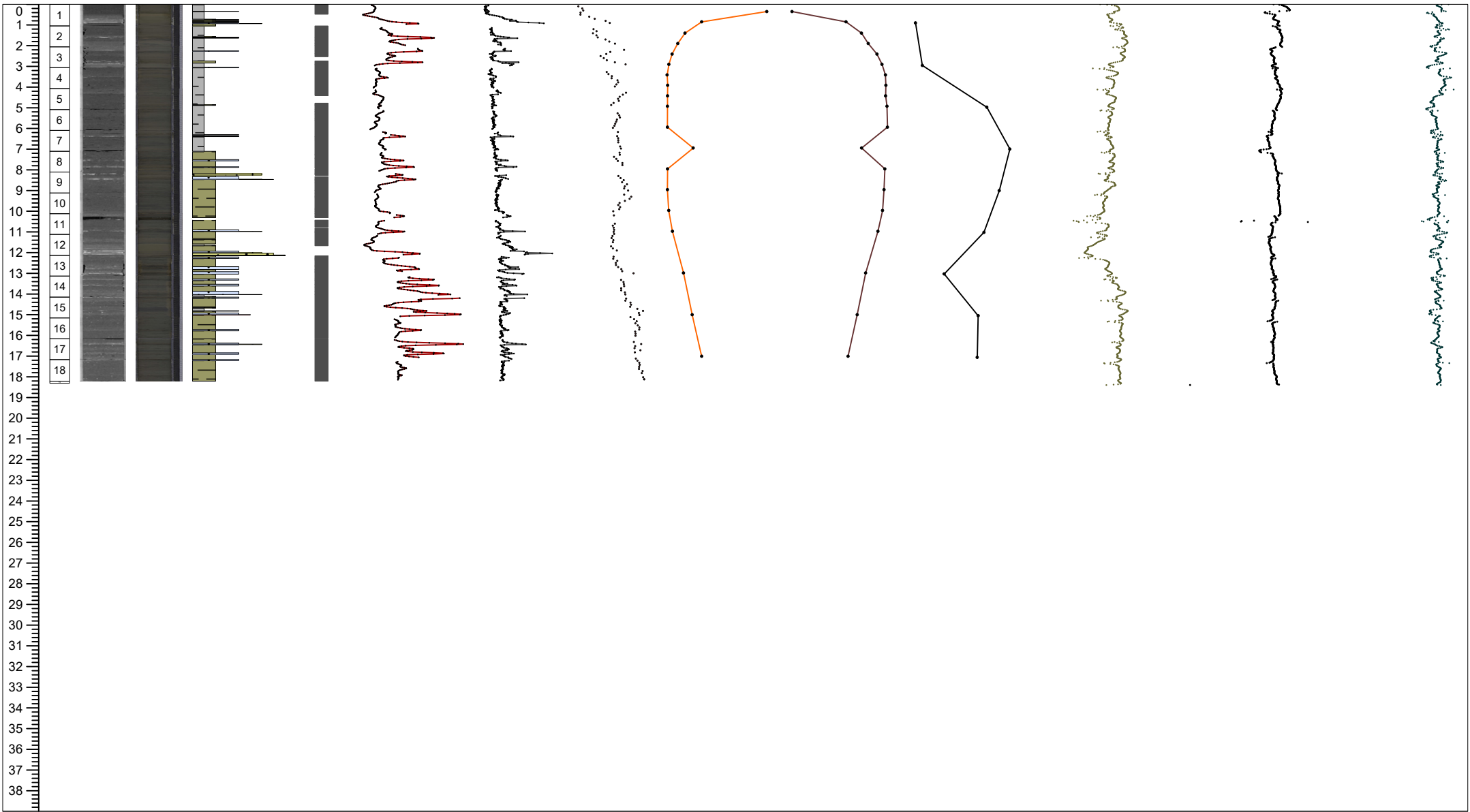
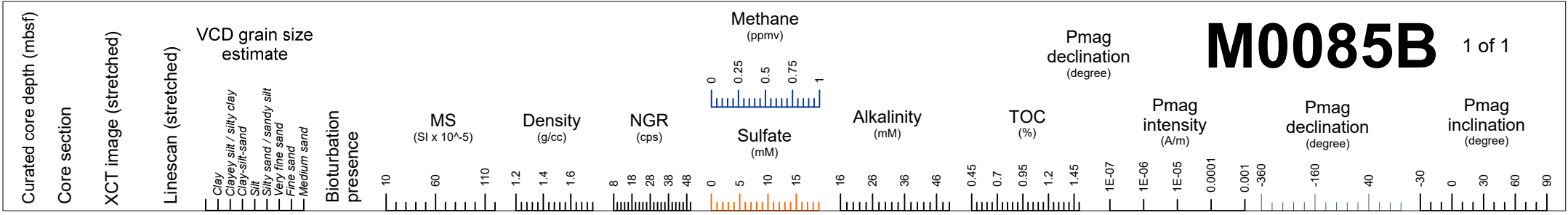


M0085A

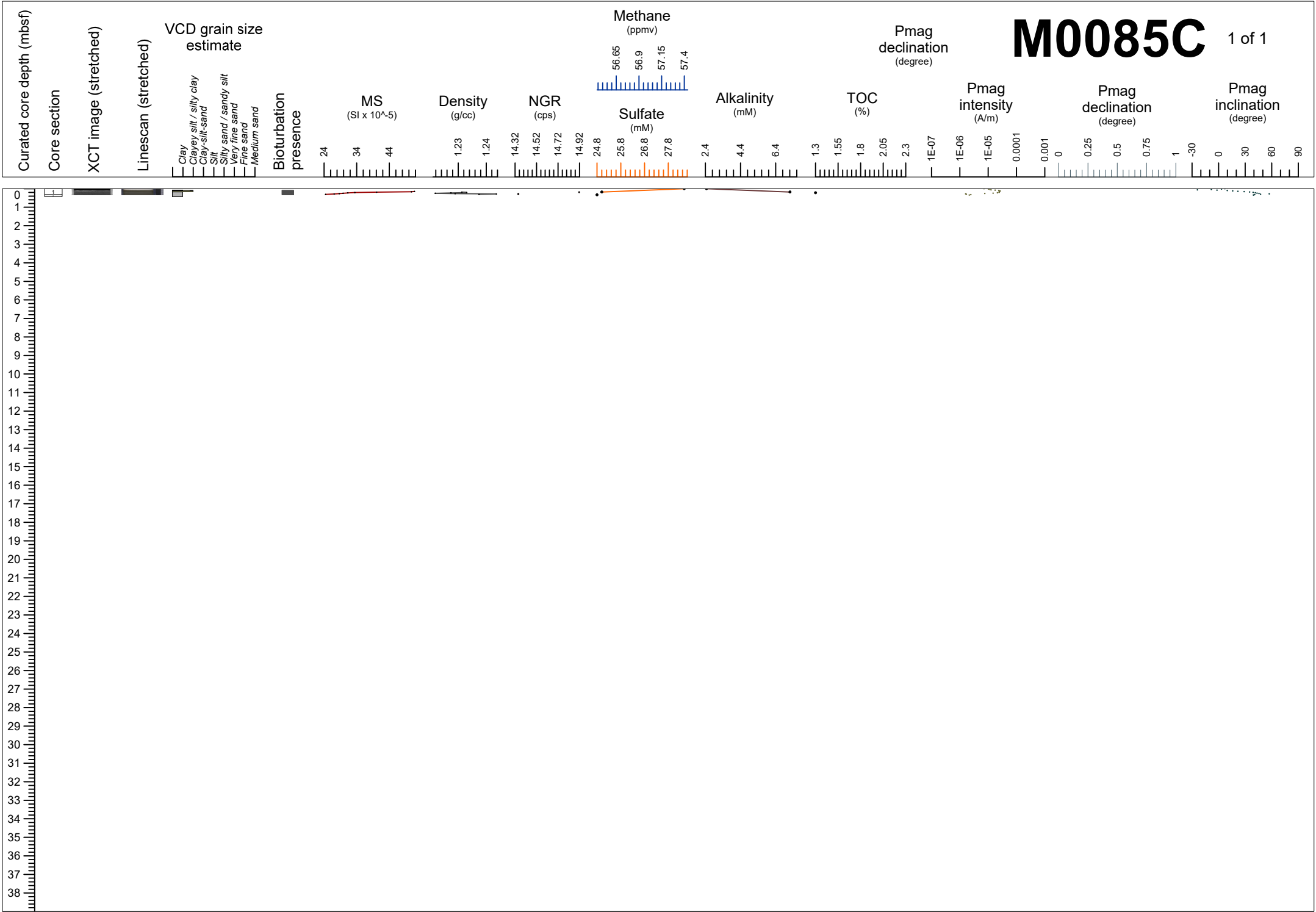
1 of 1



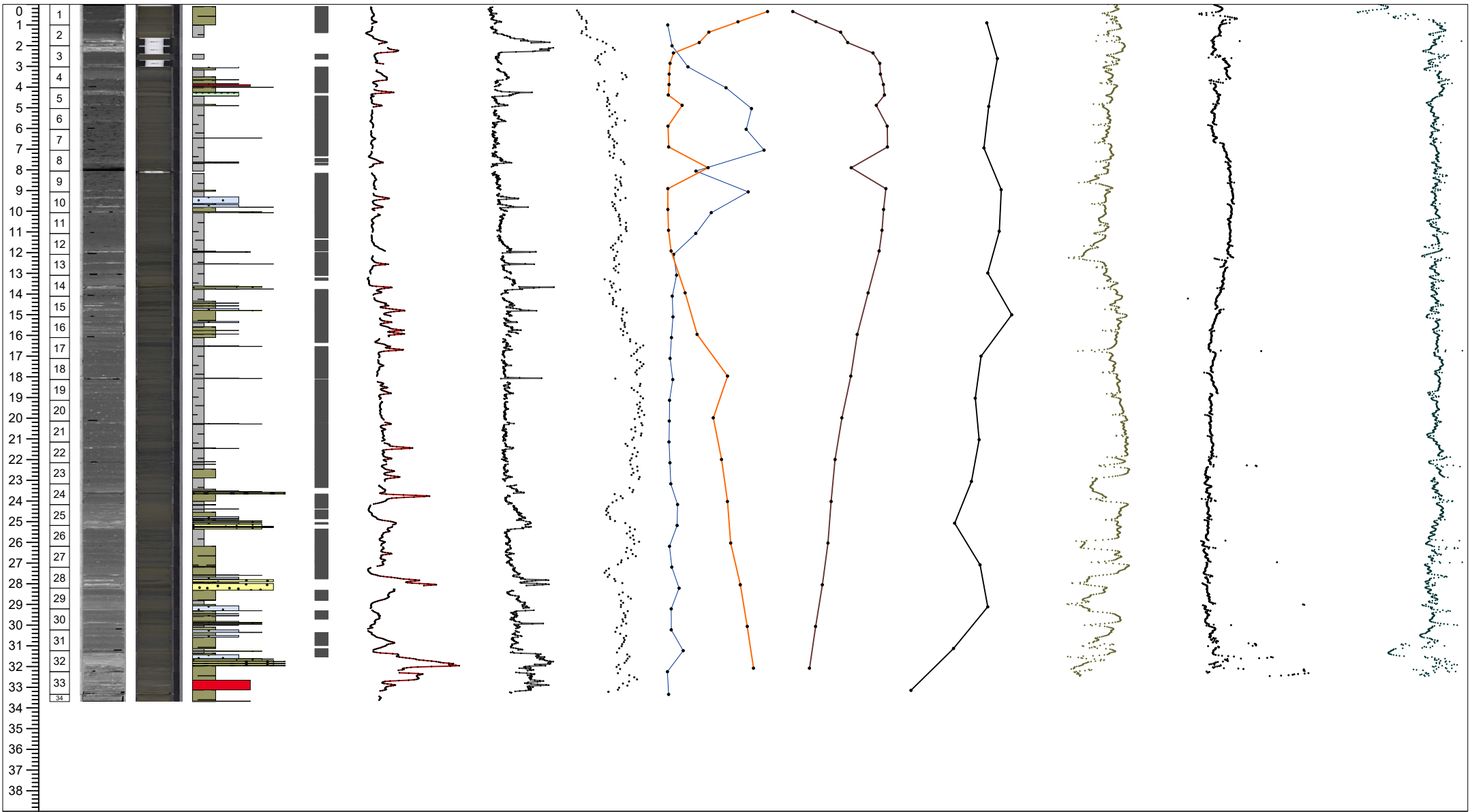
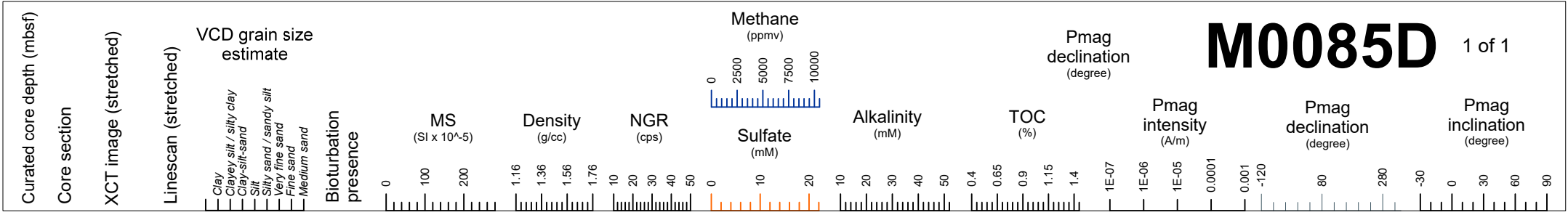
M0085B 1 of 1



M0085C 1 of 1



M0085D 1 of 1



M0085A

1 of 1

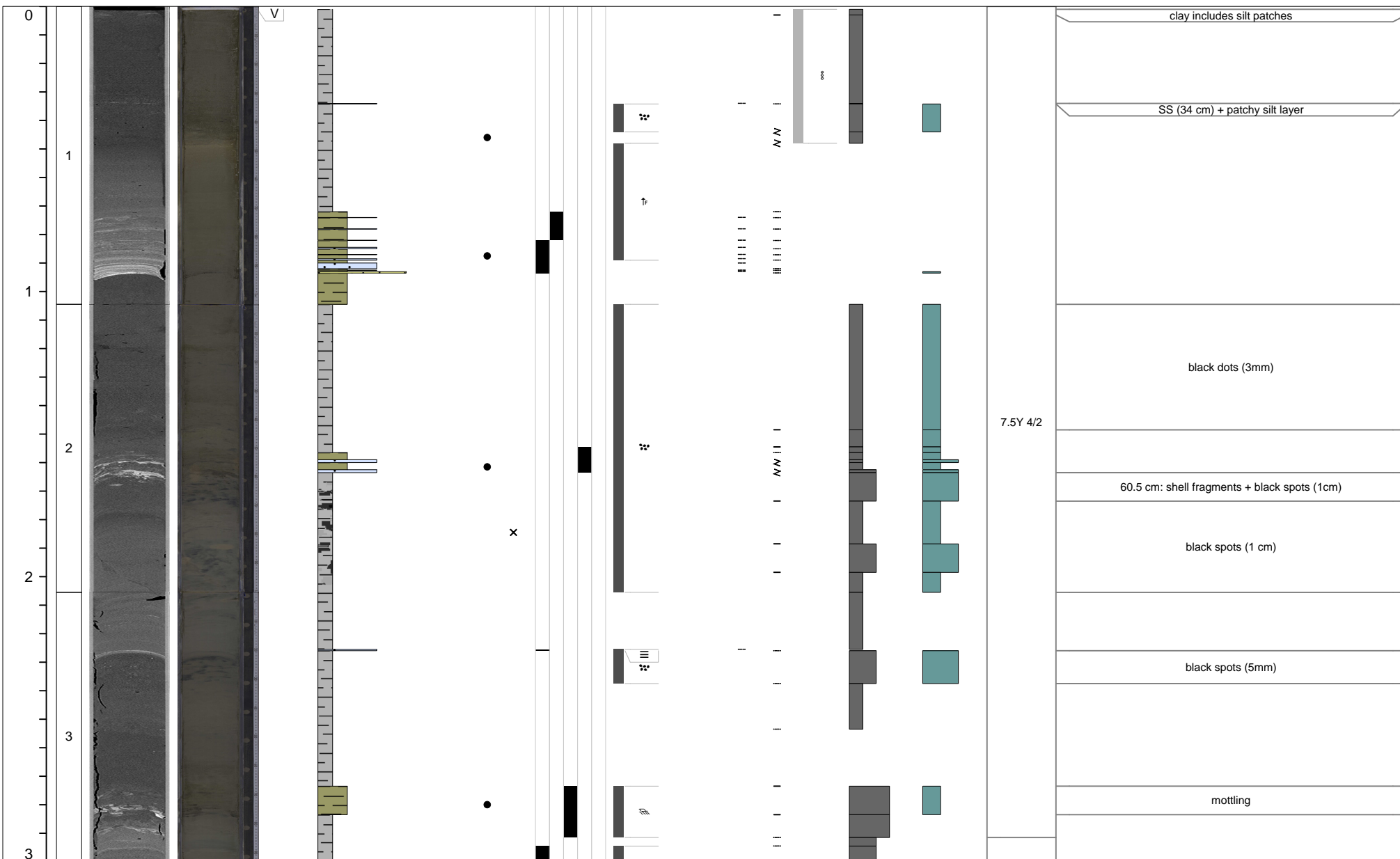
Curated core depth (mbsf)	Core section	XCT image (stretched)	Linescan (stretched)	Void (V) or whole round (WR) interval	VCD grain size estimate	Tephra VCD observations	Close up photos (midpoint)	Smear slides	Sedimentary structures	Accessories	Top contact	Base contact	Coring disturbance	Bioturbation intensity	Iron monosulfide abundance	Color	Additional Observations
					Clay Clayey silt / silty clay Clay-silt-sand Silt Silty sand / sandy silt Very fine sand Fine sand Medium sand				Parallel laminated Wavy laminated Convolute Chaotic Graded Other sedimentary structures					1 2 3 4 5 0 1 2 3			



M0085B

1 of 7

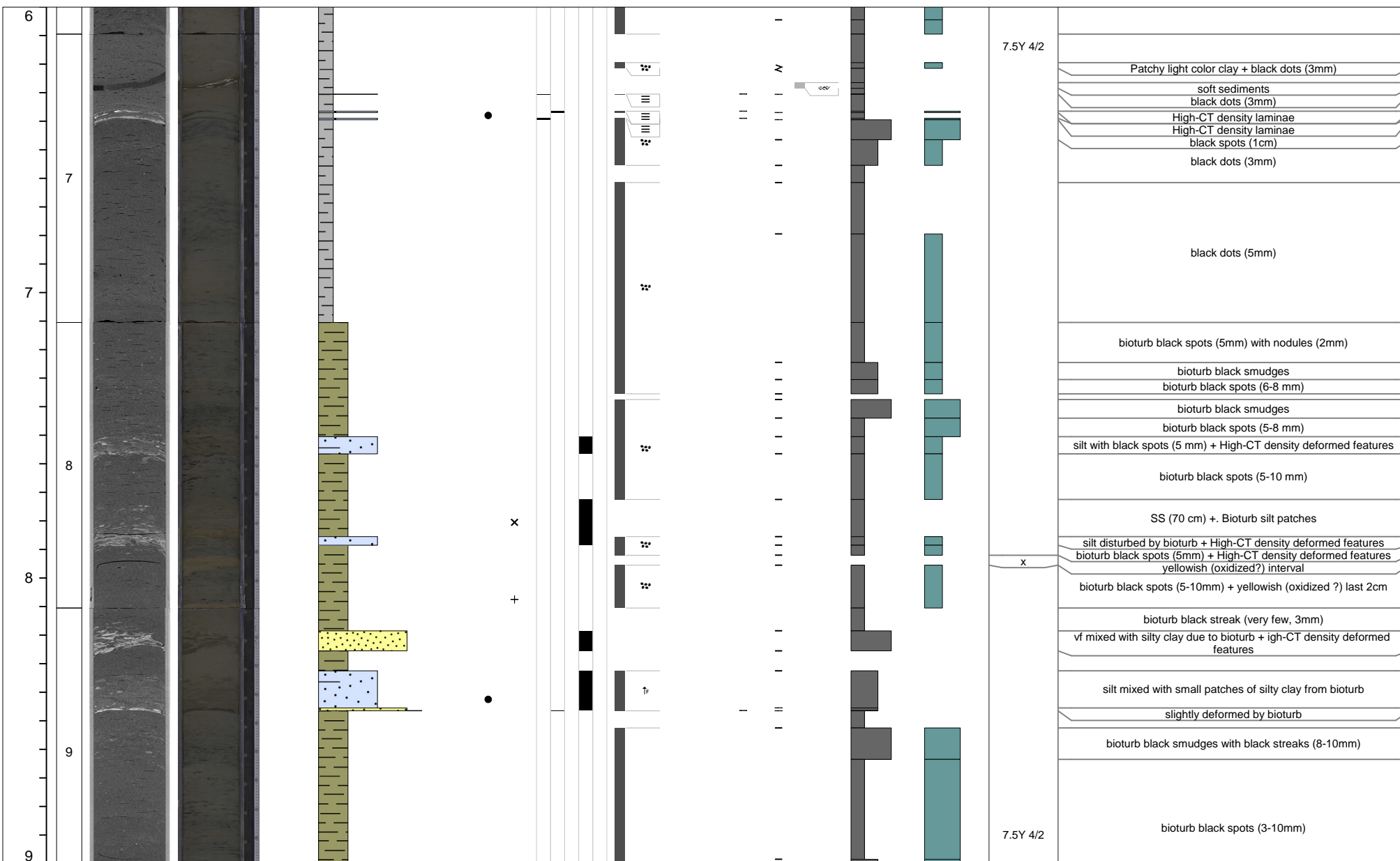
Curated core depth (mbsf)	Core section	XCT image (stretched)	Linescan (stretched)	Void (V) or whole round (WR) interval	VCD grain size estimate						Tephra VCD observations	Close up photos (midpoint)	Smear slides	Sedimentary structures				Accessories	Top contact	Base contact	Coring disturbance	Bioturbation intensity					Iron monosulfide abundance			Color	Additional Observations
					Clay	Clayey silt / silty clay	Clay-silt-sand	Silt	Silty sand / sandy silt	Very fine sand				Fine sand	Medium sand	Parallel laminated	Wavy laminated					Convolute	Chaotic	Graded	Other sedimentary structures	1	2	3	4		



M0085B

3 of 7

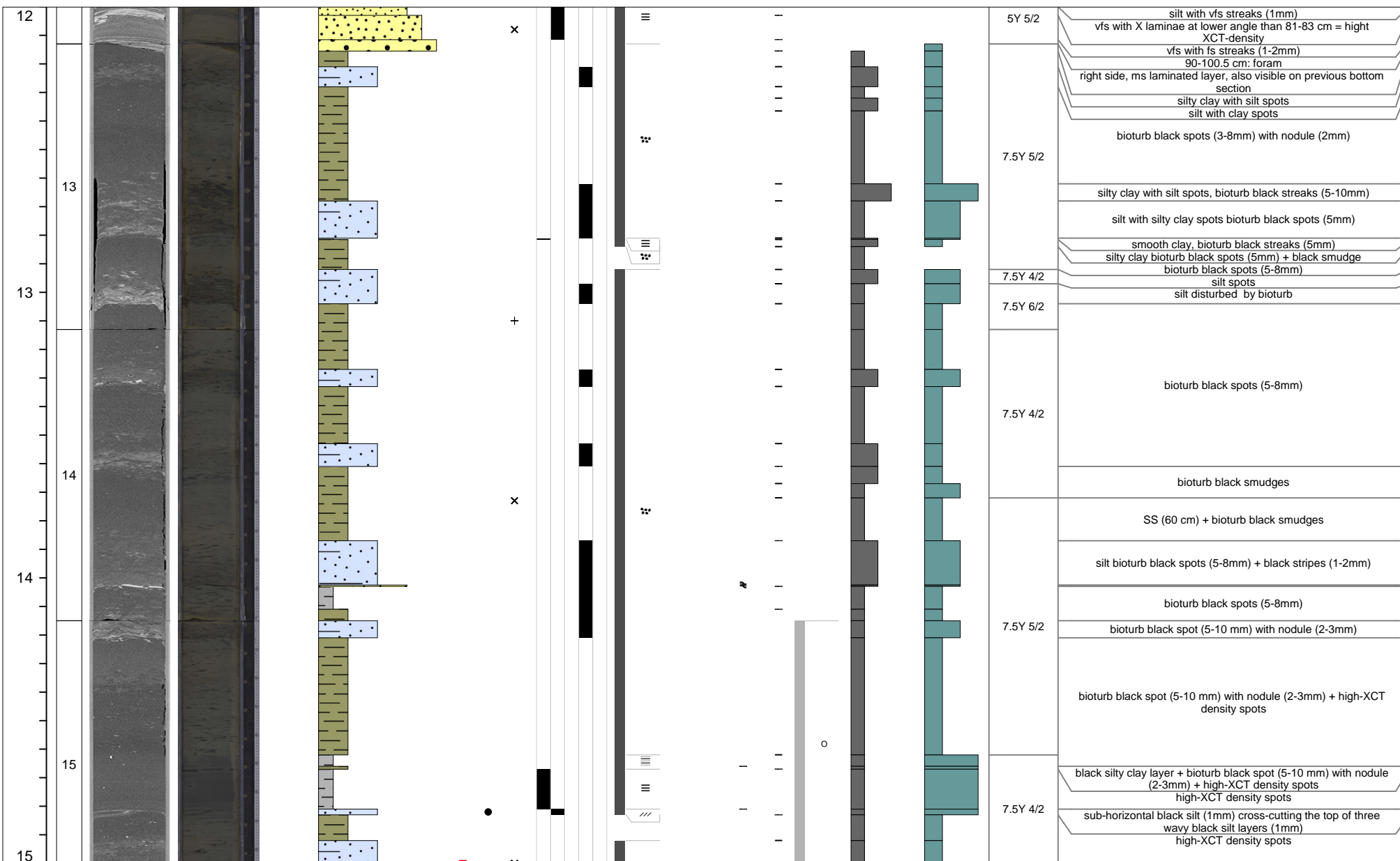
Additional Observations



M0085B

5 of 7

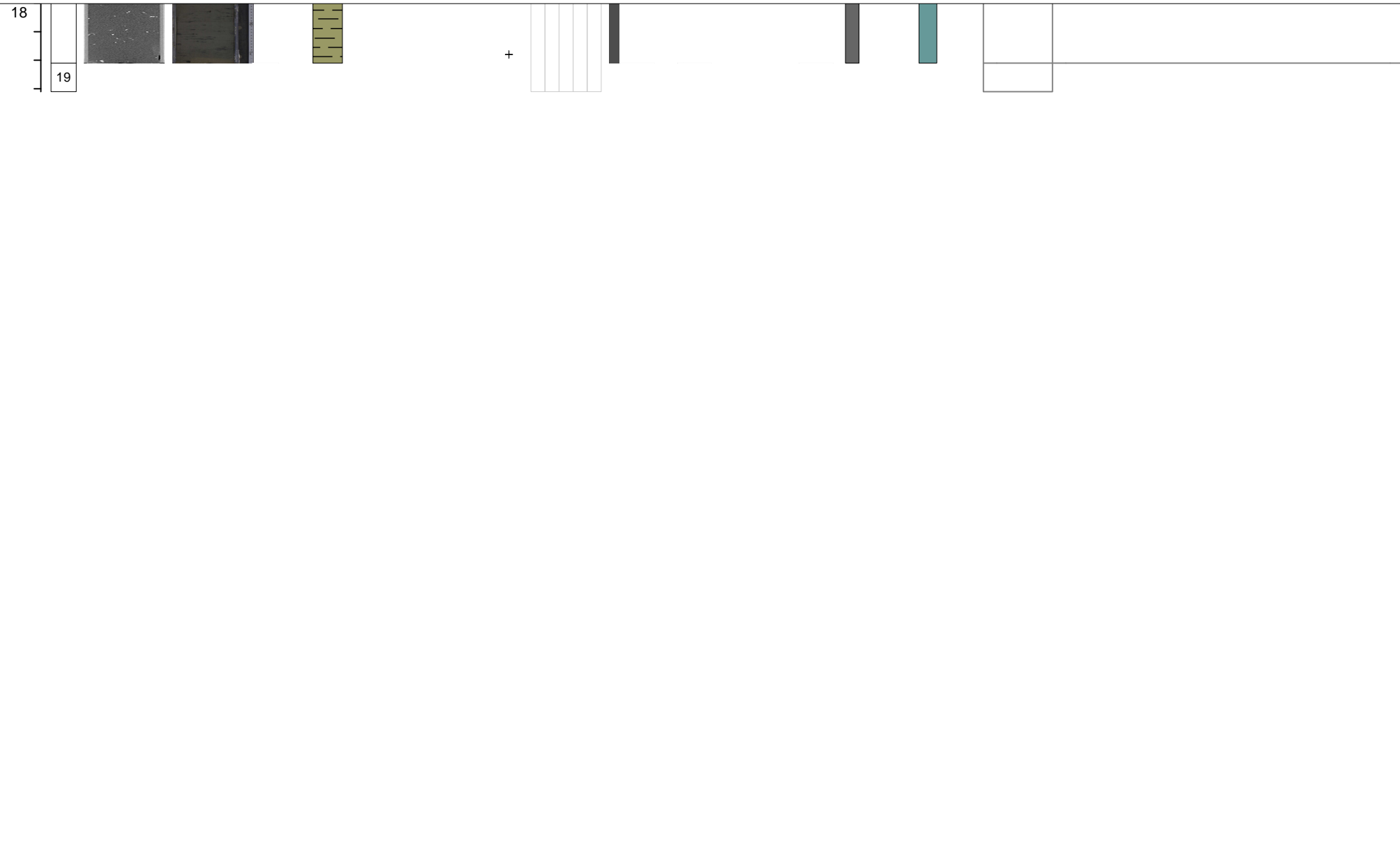
Additional Observations



M0085B

7 of 7

Curated core depth (mbsf)	Core section	XCT image (stretched)	Linescan (stretched)	Void (V) or whole round (WR) interval	VCD grain size estimate	Tephra VCD observations	Close up photos (midpoint)	Smear slides	Sedimentary structures	Accessories	Top contact	Base contact	Coring disturbance	Bioturbation intensity	Iron monosulfide abundance	Color	Additional Observations
					Clay Clayey silt / silty clay Clay-silt-sand Silt Silty sand / sandy silt Very fine sand Fine sand Medium sand				Parallel laminated Wavy laminated Convolute Chaotic Graded Other sedimentary structures					1 2 3 4 5 0 1 2 3			



M0085C

1 of 1

Curated core depth (mbsf)	Core section	XCT image (stretched)	Linescan (stretched)	Void (V) or whole round (WR) interval	VCD grain size estimate					Sedimentary structures					Accessories	Top contact	Base contact	Coring disturbance	Bioturbation intensity					Iron monosulfide abundance			Color	Additional Observations								
					Clay	Clayey silt / silty clay	Clay-silt-sand	Silt	Silty sand / sandy silt	Very fine sand	Fine sand	Medium sand	Tephra VCD observations	Close up photos (midpoint)	Smear slides	Parallel laminated	Wavy laminated	Convolute	Chaotic	Graded	Other sedimentary structures															

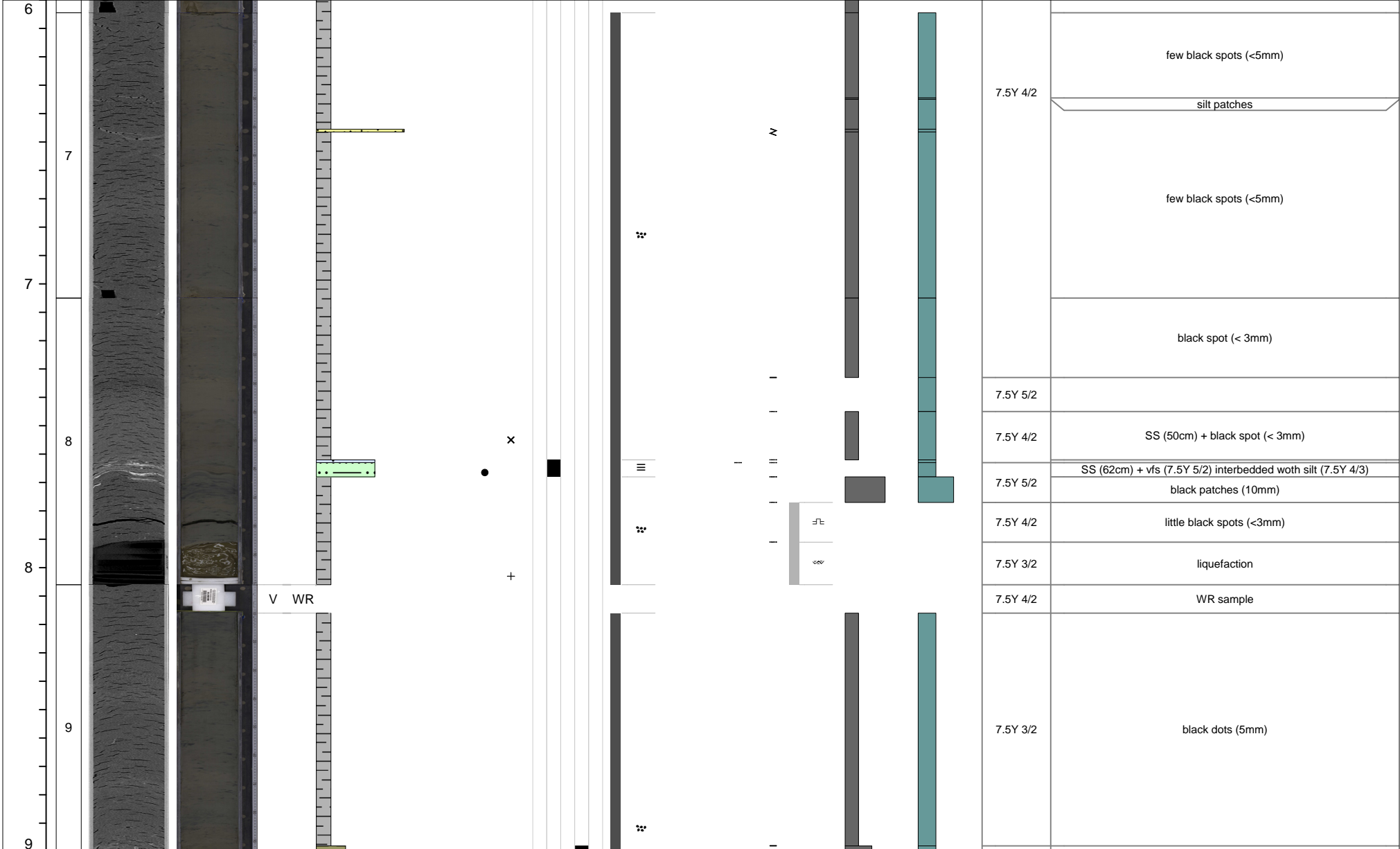
0				V																																
1																																				
2																																				

7.5Y 4/2	SS (9 cm) Grayish silt streak
7.5Y 5/2	Very few black spots (3-5cm)
	CC in bag

M0085D

3 of 12

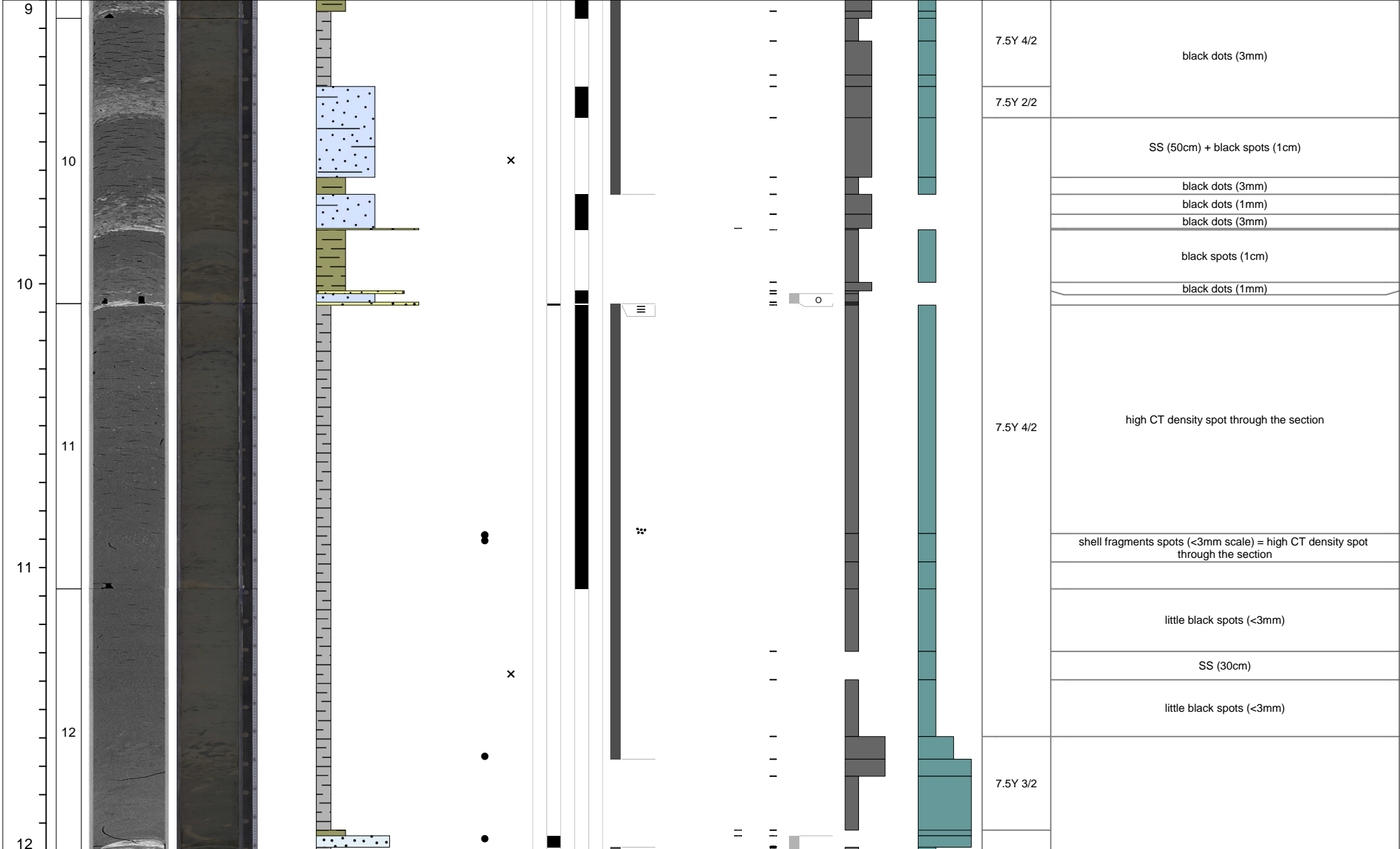
Curated core depth (mbsf)	Core section	XCT image (stretched)	Linescan (stretched)	Void (V) or whole round (WR) interval	VCD grain size estimate							Tephra VCD observations	Close up photos (midpoint)	Smear slides	Sedimentary structures				Accessories	Top contact	Base contact	Coring disturbance	Bioturbation intensity					Iron monosulfide abundance			Color	Additional Observations
					Clay	Clayey silt / silty clay	Clay-silt-sand	Silt	Silty sand / sandy silt	Very fine sand	Fine sand				Medium sand	Parallel laminated	Wavy laminated	Convolute					Chaotic	Graded	Other sedimentary structures	1	2	3	4	5		



M0085D

4 of 12

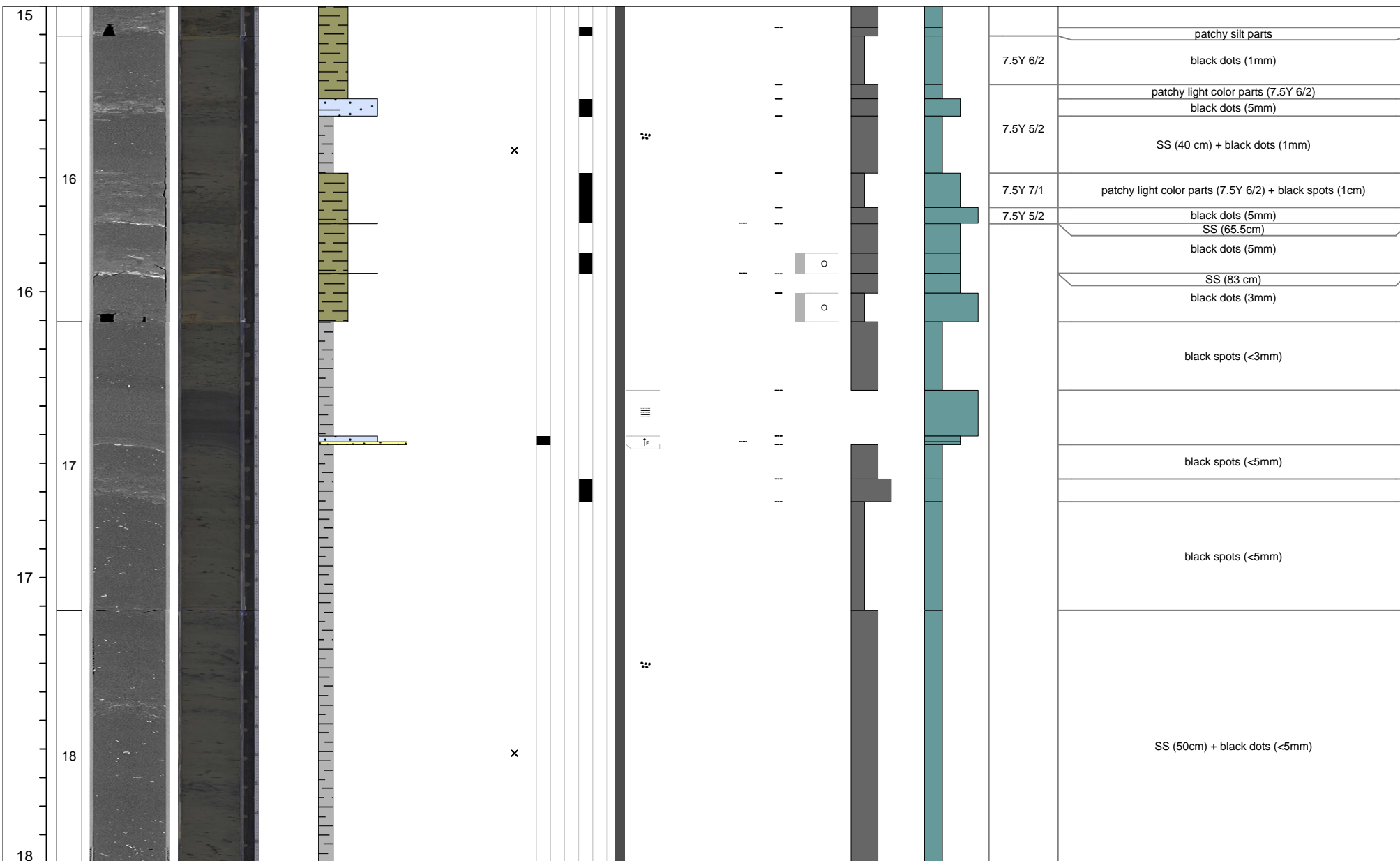
Curated core depth (mbsf)	Core section	XCT image (stretched)	Linescan (stretched)	Void (V) or whole round (WR) interval	VCD grain size estimate						Tephra VCD observations	Close up photos (midpoint)	Smear slides	Sedimentary structures				Accessories	Top contact	Base contact	Coring disturbance	Bioturbation intensity					Iron monosulfide abundance			Color	Additional Observations
					Clay	Clayey silt / silty clay	Clay-silt-sand	Silt	Silty sand / sandy silt	Very fine sand				Fine sand	Medium sand	Parallel laminated	Wavy laminated					Convolute	Chaotic	Graded	Other sedimentary structures	1	2	3	4		



M0085D

6 of 12

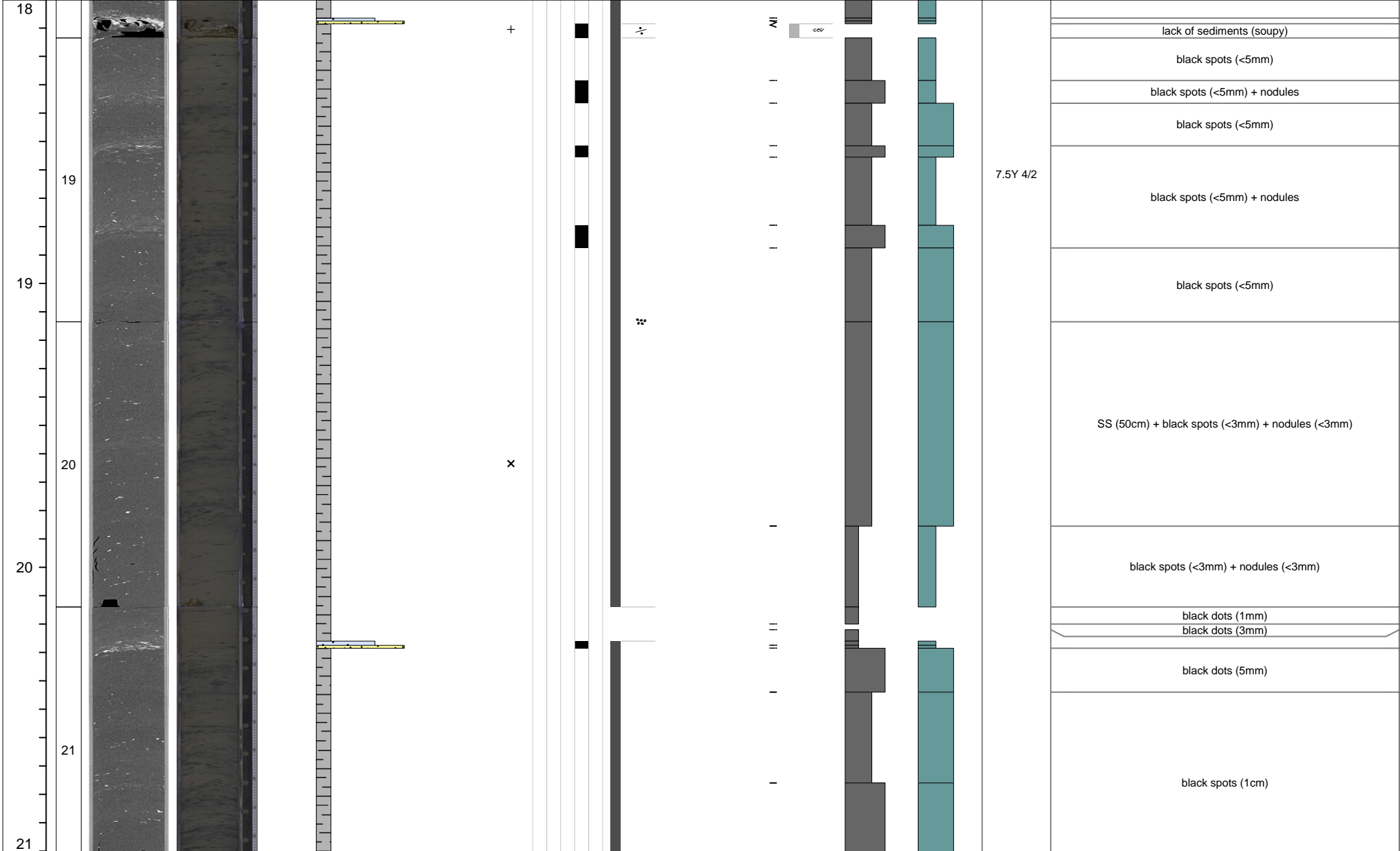
Curated core depth (mbsf)	Core section	XCT image (stretched)	Linescan (stretched)	Void (V) or whole round (WR) interval	VCD grain size estimate						Tephra VCD observations	Close up photos (midpoint)	Smear slides	Sedimentary structures				Accessories	Top contact	Base contact	Coring disturbance	Bioturbation intensity					Iron monosulfide abundance			Color	Additional Observations
					Clay	Clayey silt / silty clay	Clay-silt-sand	Silt	Silty sand / sandy silt	Very fine sand				Fine sand	Medium sand	Parallel laminated	Wavy laminated					Convolute	Chaotic	Graded	Other sedimentary structures	1	2	3	4		



M0085D

7 of 12

Curated core depth (mbsf)	Core section	XCT image (stretched)	Linescan (stretched)	Void (V) or whole round (WR) interval	VCD grain size estimate						Tephra VCD observations	Close up photos (midpoint)	Smear slides	Sedimentary structures				Accessories	Top contact	Base contact	Coring disturbance	Bioturbation intensity					Iron monosulfide abundance			Color	Additional Observations
					Clay	Clayey silt / silty clay	Clay-silt-sand	Silt	Silty sand / sandy silt	Very fine sand				Fine sand	Medium sand	Parallel laminated	Wavy laminated					Convolute	Chaotic	Graded	Other sedimentary structures	1	2	3	4		



M0085D

8 of 12

Curated core depth (mbsf)	Core section	XCT image (stretched)	Linescan (stretched)	Void (V) or whole round (WR) interval	VCD grain size estimate						Tephra VCD observations	Close up photos (midpoint)	Smear slides	Sedimentary structures				Accessories	Top contact	Base contact	Coring disturbance	Bioturbation intensity					Iron monosulfide abundance			Color	Additional Observations
					Clay	Clayey silt / silty clay	Clay-silt-sand	Silt	Silty sand / sandy silt	Very fine sand				Fine sand	Medium sand	Parallel laminated	Wavy laminated					Convolute	Chaotic	Graded	Other sedimentary structures	1	2	3	4		
21																												small black grains are concentrated within black spots (1cm) black dots (1cm)			
22												x																black dots (5mm)			
22																												SS (50 cm) + black spots (1cm)			
23																												black spots (1cm)			
23																												brown clay oxidized ? black spots (1cm)			
23																												black spots (5-8mm) bioturb black patches			
23																												black spots (5-8mm)			
23																												bioturb black patches			
23																												very little bioturb black streaks (8-10mm)			
23																												black spots (5-10mm)			
23																												bioturb black strips (1cm) very little bioturb black streaks (8-10mm)			
24												+																bioturb black spots (3-5mm) + light gray strip (5cm - 7.5Y 7/2)			
24																												bioturb black spots (3-5mm)			
24																												black needle like object (2mm)			
24												x																Embedded clasts, round and angular, with intrinsic parallel laminatio more or less deformed (only visible on XCT)			
24																												SS (41cm) + medium sand mixed with coarse sand grains slanted layer of medium sand mixed with coarse sand grains bioturb black spots (5-8mm)			
24												x																SS (70cm)			
24																												bioturb black spots (8-10mm)			

M0085D

10 of 12

Curated core depth (mbsf)	Core section	XCT image (stretched)	Linescan (stretched)	Void (V) or whole round (WR) interval	VCD grain size estimate						Tephra VCD observations	Close up photos (midpoint)	Smear slides	Sedimentary structures					Accessories	Top contact	Base contact	Coring disturbance	Bioturbation intensity					Iron monosulfide abundance			Color	Additional Observations
					Clay	Clayey silt / silty clay	Clay-silt-sand	Silt	Silty sand / sandy silt	Very fine sand				Medium sand	Parallel laminated	Wavy laminated	Convolute	Chaotic					Graded	Other sedimentary structures	1	2	3	4	5	0		
27																												5Y 4/2	high XCT-density spots + bioturb black spots (5-8mm) with nodules (2mm)			
																												7.5Y 4/2	high XCT-density spots + bioturb black streaks (2mm)			
																												5Y 4/2	Faint black spots (1-2cm)			
																											7.5Y 4/2	SS (50cm)				
28																											5Y 4/2	Interbedded vfs and fs disturbed laminations on top. Very specific interval: sharp contact on right side between silty clay and well preserved fine sand laminations. Highly dynamic deposition. Load casts.				
																											5Y 5/1	Interbedded vfs and fs disturbed laminations. Highly dynamic deposition. Look alike channel levee deposition				
																													Interbedded vfs and fs laminations. Highly dynamic deposition.			
																													black spots (5-10mm)			
																													black patches and stripes			
																													silt spots black smudges			
29																											7.5Y 4/2					
																													silt streak (5cm)			
																													slanted boundary			
																													bioturb black spots (3-5mm)			
																													bioturb black spots (3-5mm) + nodule (49 cm)			
30																													2mm nodule (54cm and 58cm)			
30																														7.5Y 5/2		

M0085D

12 of 12

Curated core depth (mbsf)	Core section	XCT image (stretched)	Linescan (stretched)	Void (V) or whole round (WR) interval	VCD grain size estimate	Tephra VCD observations	Close up photos (midpoint)	Smear slides	Sedimentary structures	Accessories	Top contact	Base contact	Coring disturbance	Bioturbation intensity	Iron monosulfide abundance	Color	Additional Observations
					Clay Clayey silt / silty clay Clay-silt-sand Silt Silty sand / sandy silt Very fine sand Fine sand Medium sand				Parallel laminated Wavy laminated Convolute Chaotic Graded Other sedimentary structures				1 2 3 4 5 0 1 2 3				

