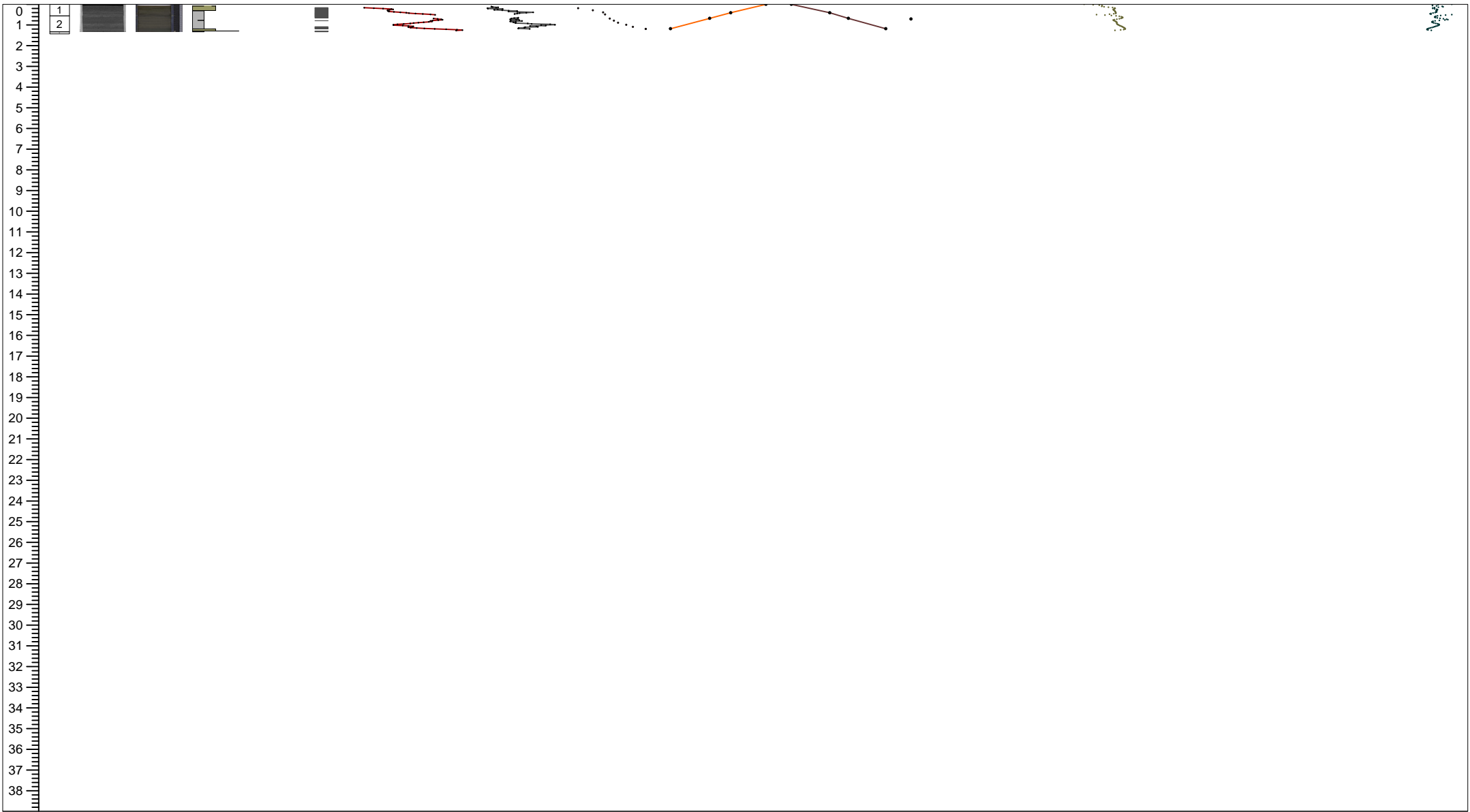
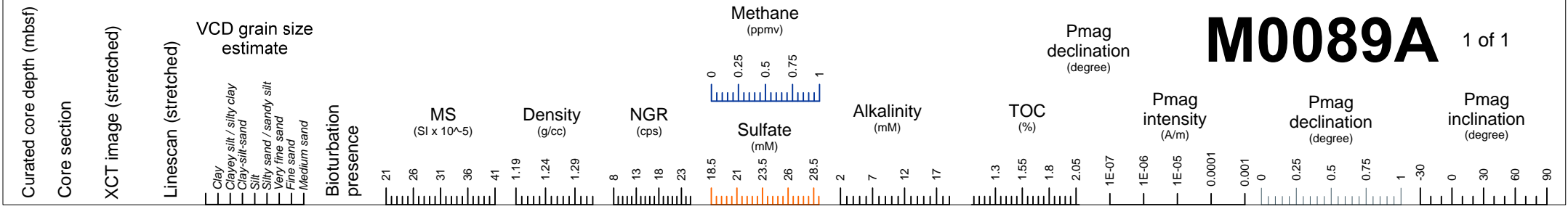
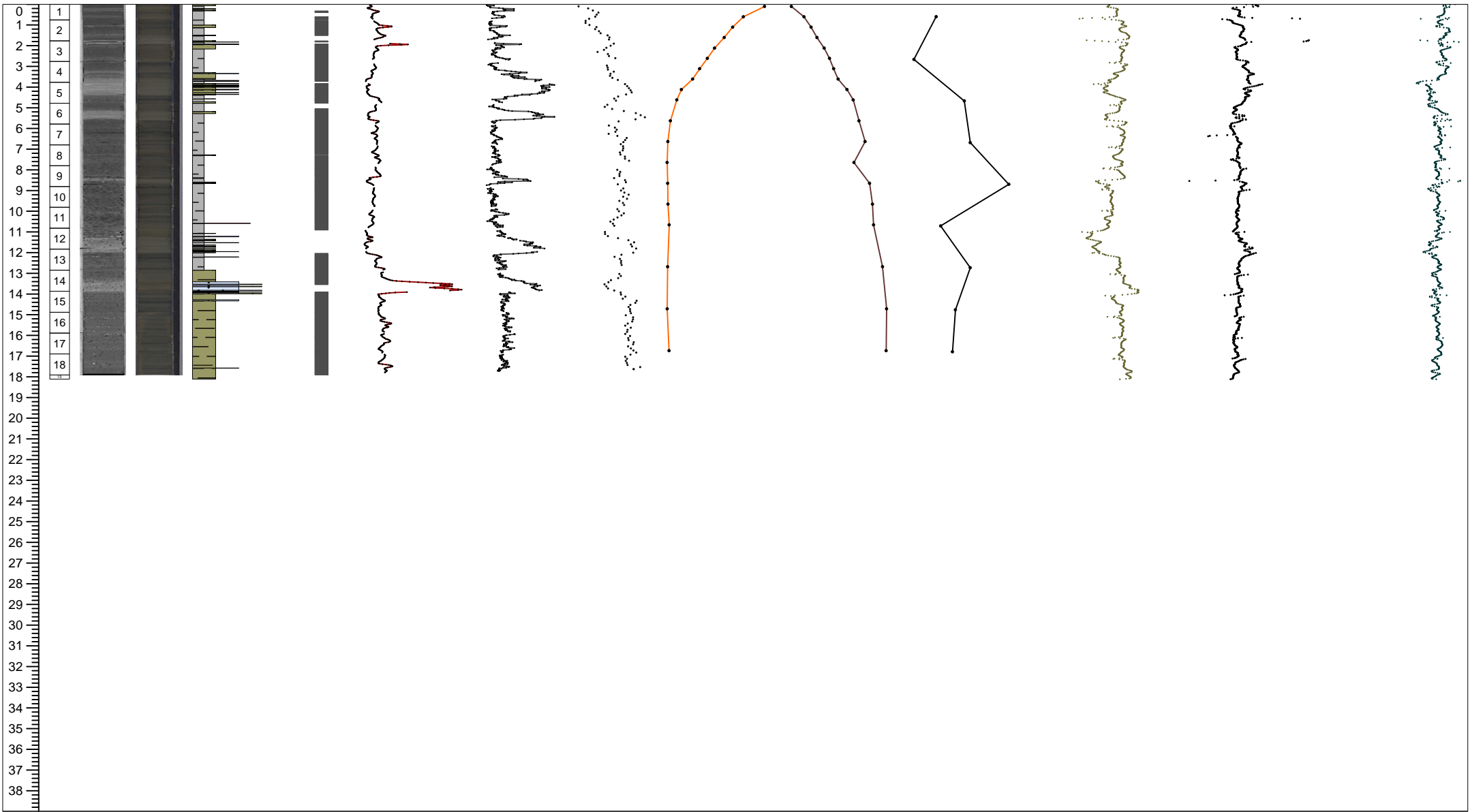
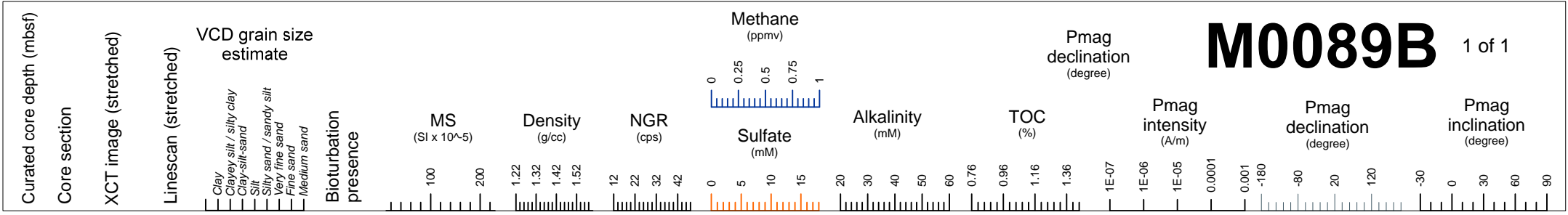


M0089A

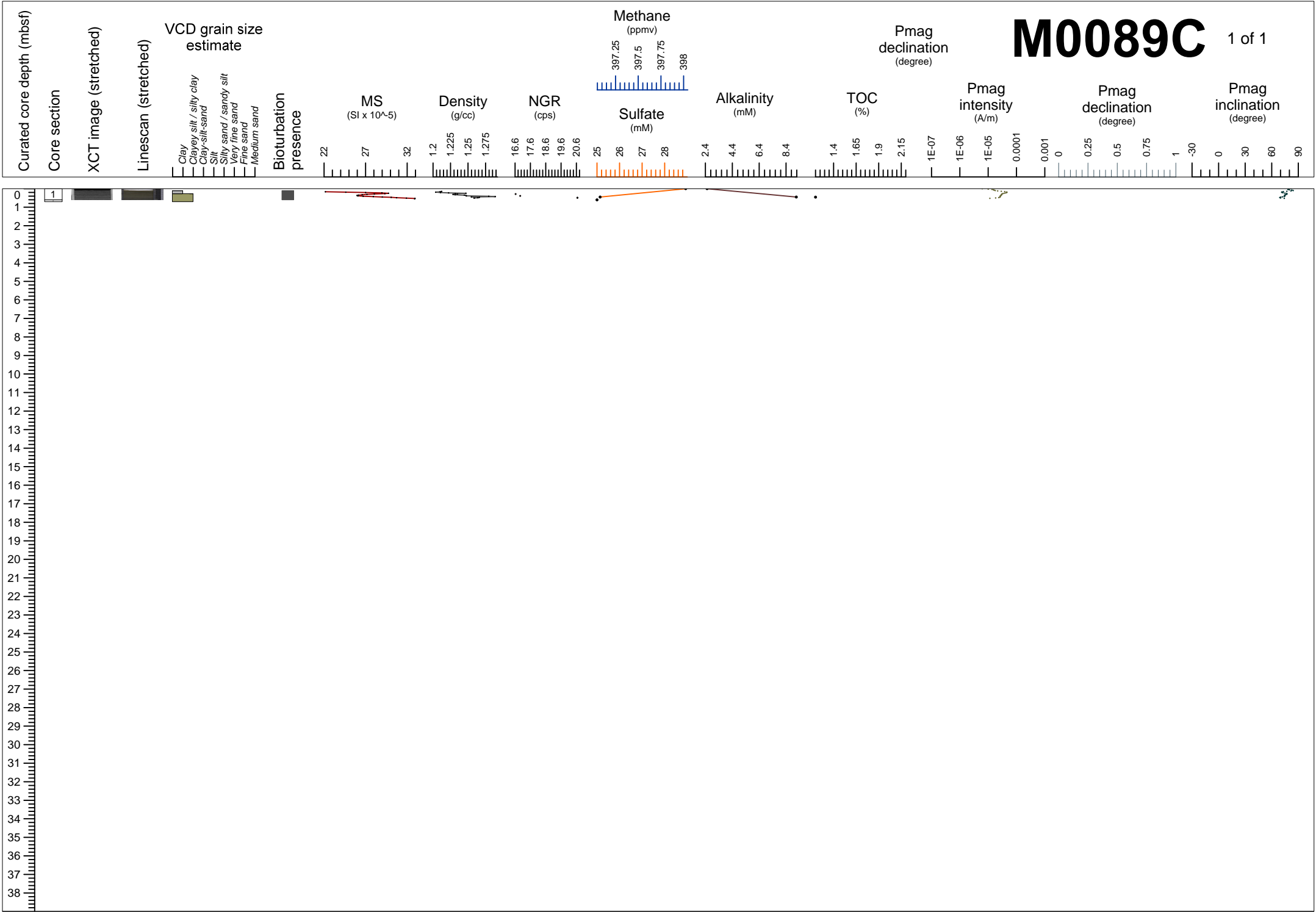
1 of 1



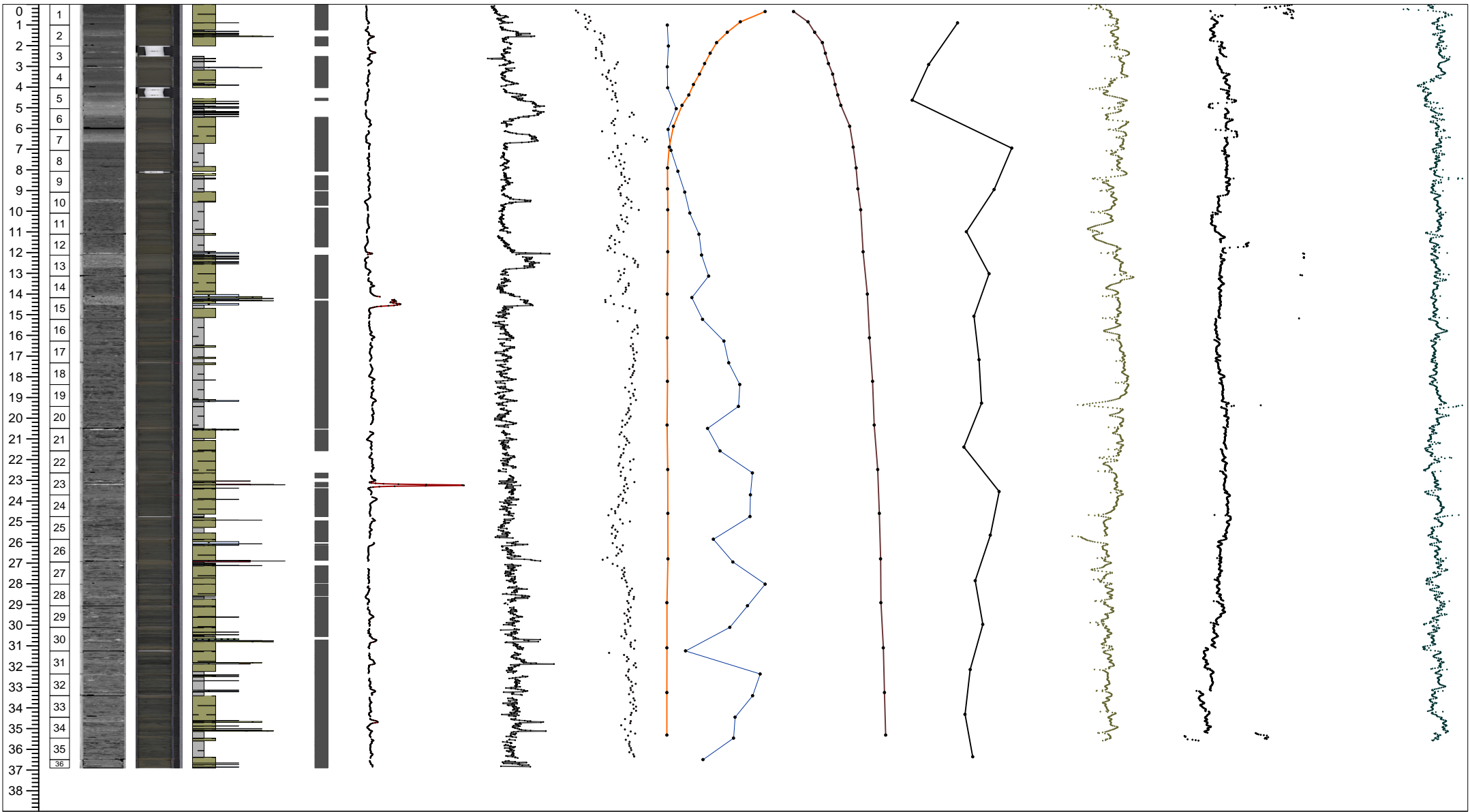
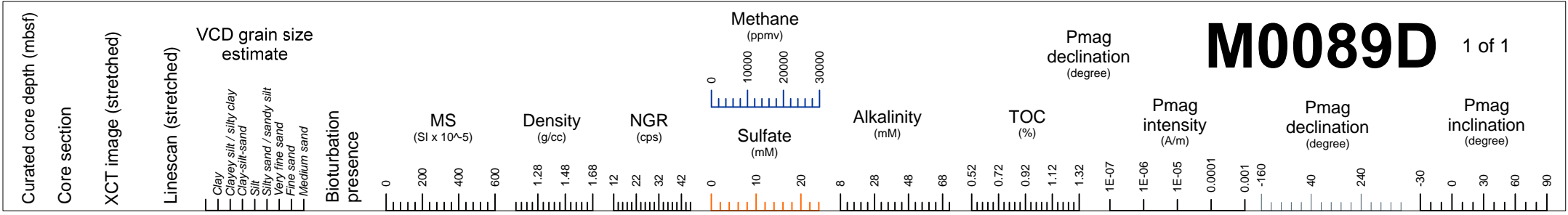
M0089B 1 of 1



M0089C 1 of 1



M0089D 1 of 1



M0089A

1 of 1

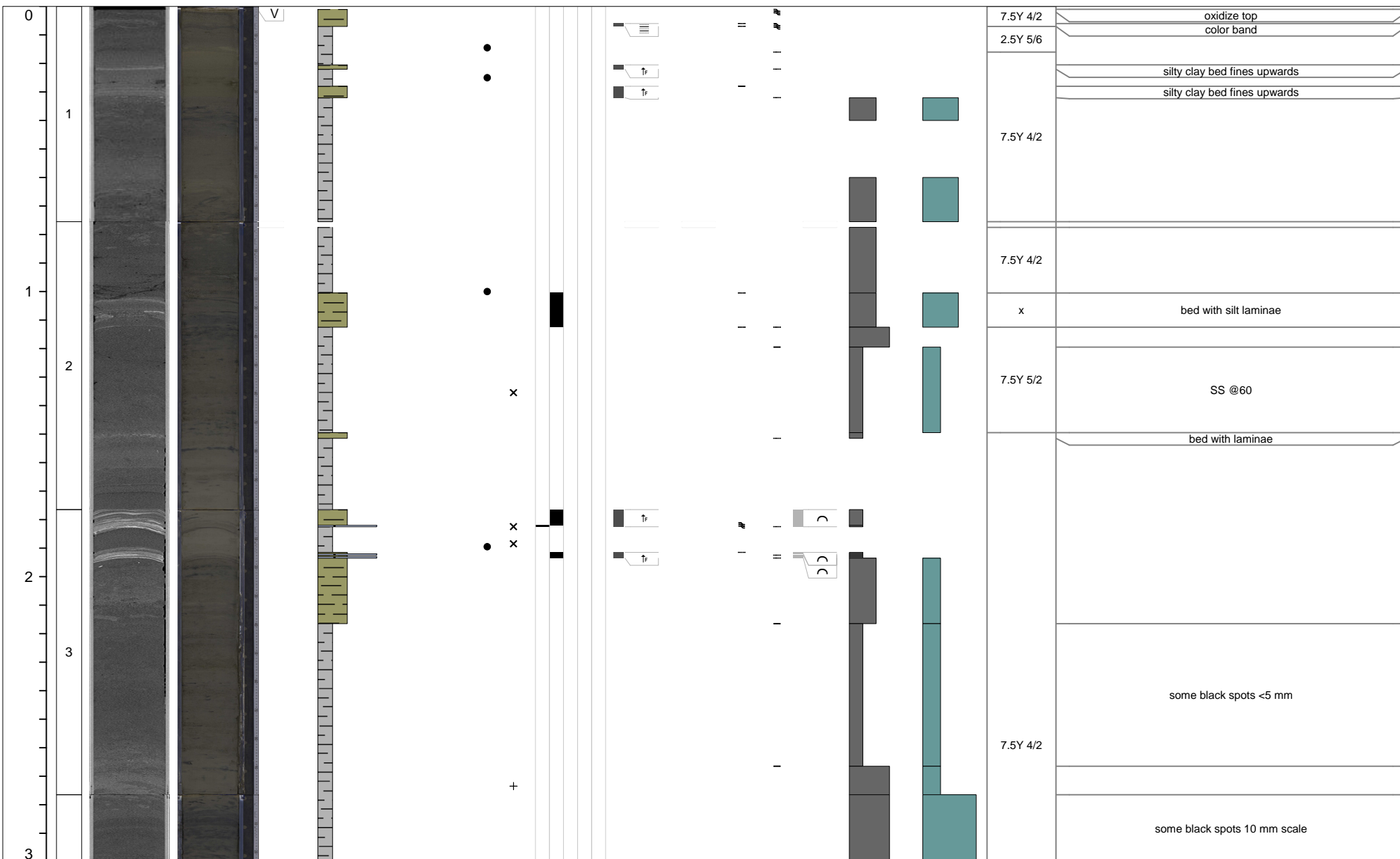
Curated core depth (mbsf)	Core section	XCT image (stretched)	Linescan (stretched)	Void (V) or whole round (WR) interval	VCD grain size estimate						Tephra VCD observations	Close up photos (midpoint)	Smear slides	Sedimentary structures				Accessories	Top contact	Base contact	Coring disturbance	Bioturbation intensity					Iron monosulfide abundance			Color	Additional Observations
					Clay	Clayey silt / silty clay	Clay-silt-sand	Silt	Silty sand / sandy silt	Very fine sand				Fine sand	Medium sand	Parallel laminated	Wavy laminated					Convolute	Chaotic	Graded	Other sedimentary structures						



M0089B

1 of 7

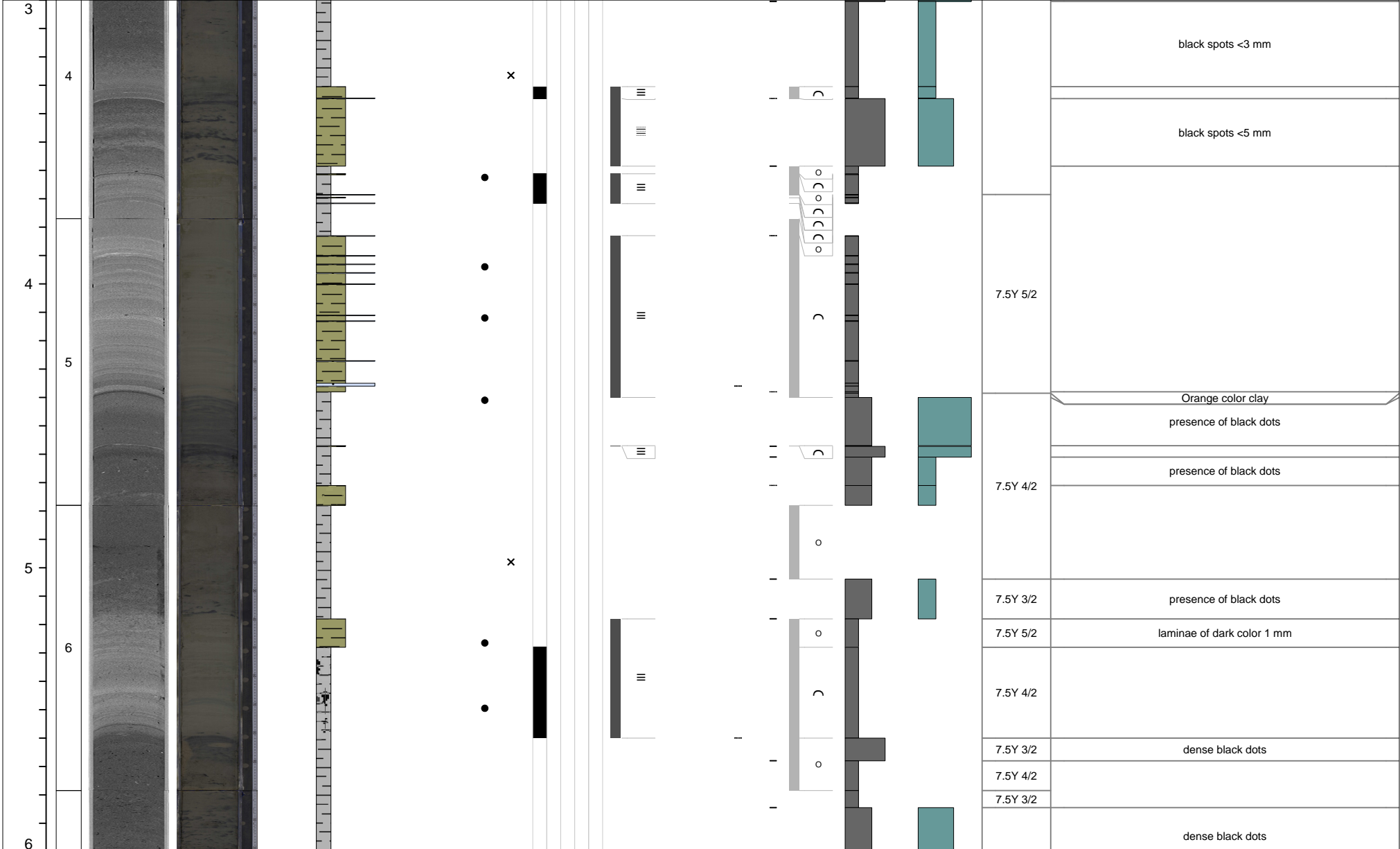
Curated core depth (mbsf)	Core section	XCT image (stretched)	Linescan (stretched)	Void (V) or whole round (WR) interval	VCD grain size estimate						Tephra VCD observations	Close up photos (midpoint)	Smear slides	Sedimentary structures				Accessories	Top contact	Base contact	Coring disturbance	Bioturbation intensity					Iron monosulfide abundance			Color	Additional Observations
					Clay	Clayey silt / silty clay	Clay-silt-sand	Silt	Silty sand / sandy silt	Very fine sand				Fine sand	Medium sand	Parallel laminated	Wavy laminated					Convolute	Chaotic	Graded	Other sedimentary structures	1	2	3	4		



M0089B

2 of 7

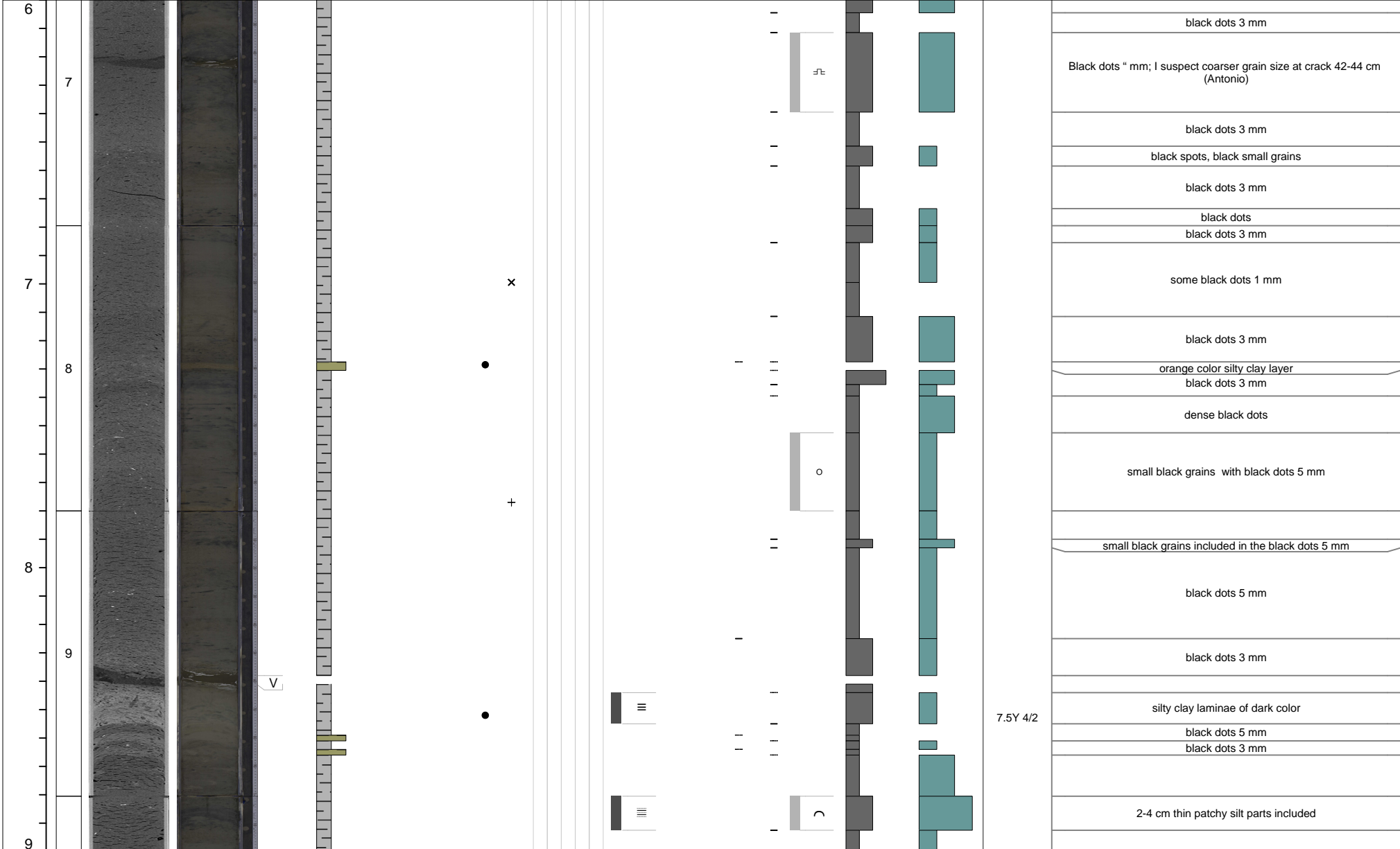
Curated core depth (mbsf)	Core section	XCT image (stretched)	Linescan (stretched)	Void (V) or whole round (WR) interval	VCD grain size estimate						Tephra VCD observations	Close up photos (midpoint)	Smear slides	Sedimentary structures				Accessories	Top contact	Base contact	Coring disturbance	Bioturbation intensity					Iron monosulfide abundance			Color	Additional Observations
					Clay	Clayey silt / silty clay	Clay-silt-sand	Silt	Silty sand / sandy silt	Very fine sand				Fine sand	Medium sand	Parallel laminated	Wavy laminated					Convolute	Chaotic	Graded	Other sedimentary structures	1	2	3	4		



M0089B

3 of 7

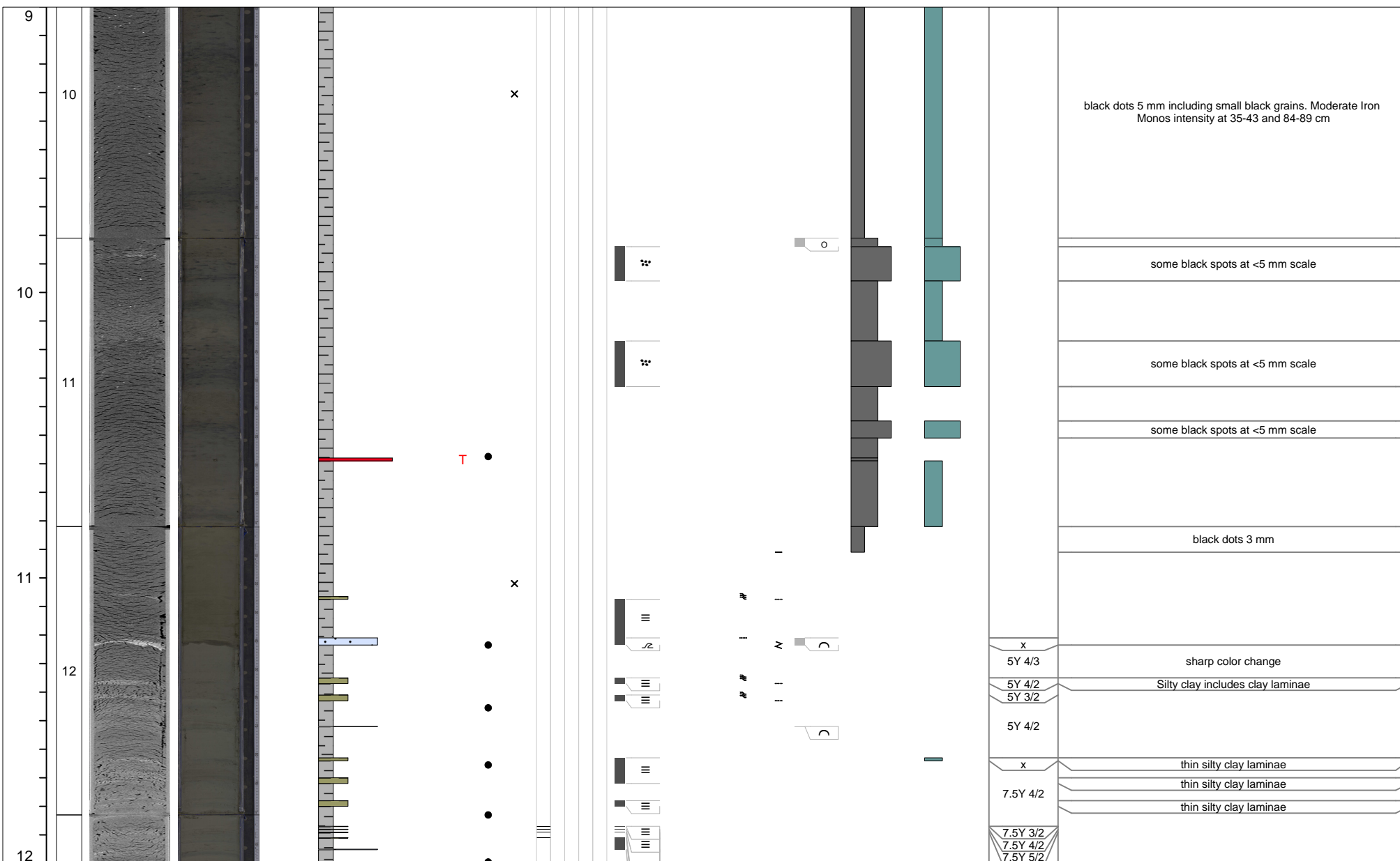
Curated core depth (mbsf)	Core section	XCT image (stretched)	Linescan (stretched)	Void (V) or whole round (WR) interval						VCD grain size estimate						Sedimentary structures						Accessories	Top contact	Base contact	Coring disturbance	Bioturbation intensity					Iron monosulfide abundance			Color	Additional Observations
				Clay	Clayey silt / silty clay	Clay-silt-sand	Silt	Silty sand / sandy silt	Very fine sand	Fine sand	Medium sand	Tephra	VCD observations	Close up photos (midpoint)	Smear slides	Parallel laminated	Wavy laminated	Convolute	Chaotic	Graded	Other sedimentary structures					1	2	3	4	5	0	1	2		



M0089B

4 of 7

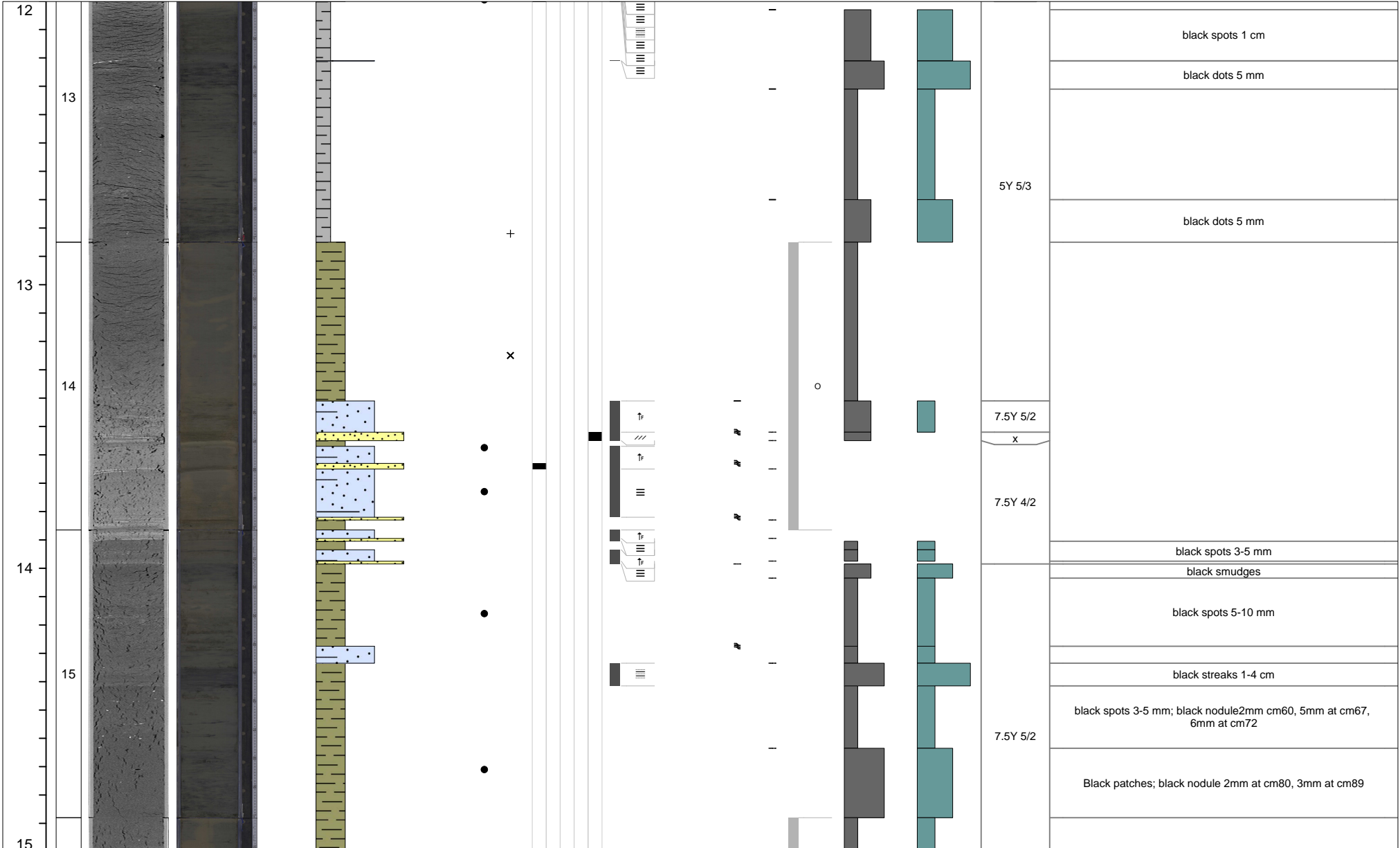
Additional Observations



M0089B

5 of 7

Curated core depth (mbsf)	Core section	XCT image (stretched)	Linescan (stretched)	Void (V) or whole round (WR) interval	VCD grain size estimate Clay Clayey silt / silty clay Clay-silt-sand Silt Silty sand / sandy silt Very fine sand Fine sand Medium sand	Tephra VCD observations	Close up photos (midpoint)	Smear slides	Sedimentary structures Parallel laminated Wavy laminated Convolute Chaotic Graded Other sedimentary structures	Accessories	Top contact	Base contact	Coring disturbance	Bioturbation intensity 1 2 3 4 5	Iron monosulfide abundance 0 1 2 3	Color	Additional Observations
---------------------------	--------------	-----------------------	----------------------	---------------------------------------	--	-------------------------	----------------------------	--------------	--	-------------	-------------	--------------	--------------------	-------------------------------------	---------------------------------------	-------	-------------------------



M0089B

6 of 7

Curated core depth (mbsf)	Core section	XCT image (stretched)	Linescan (stretched)	Void (V) or whole round (WR) interval	VCD grain size estimate						Tephra VCD observations	Close up photos (midpoint)	Smear slides	Sedimentary structures				Accessories	Top contact	Base contact	Coring disturbance	Bioturbation intensity					Iron monosulfide abundance			Color	Additional Observations
					Clay	Clayey silt / silty clay	Clay-silt-sand	Silt	Silty sand / sandy silt	Very fine sand				Fine sand	Medium sand	Parallel laminated	Wavy laminated					Convolute	Chaotic	Graded	Other sedimentary structures	1	2	3	4		

15																								black spots 3-5 mm; black nodule 4mm at cm15, 4mm at cm18, 5mm at cm30
16																								Spots 5-8 mm; black nodule 5mm at cm33
											x													black streaks 5-10 mm
																								black spots 5-8 mm
																								black streaks 5-15 mm
																								black spots 5-8 mm, black smudges; black nodules 3-5mm at cm72, 79, 80, 82
																								black spots 5-8 mm; black nodule 5mm at cm 86, 89
																								black streaks 8-10 mm; black nodule 6 mm at cm 94, 95, 98
																								black spots 8-10 mm; black nodules (x8) 3-5 mm
																								bioturbated streak spots 3 mm
																								Bioturbated black spots 3-5 mm; black nodule 2-3mm at cm28, 29, 30
																								black streaks 3-5 mm; black nodule (x5) 3-8 mm
																								black smudges
																								black spots 3-8 mm; black nodule 5 mm at cm58, 64, 75, 76, 81,82
																								bioturbated black patches; black nodule 8 mm
																								black spots 5 mm. Attention Corrected VCD say interval 88-95 but it is actually 88-93
																								bioturbated black patches
																								black streak 3-5 mm; black nodule 10mm at cm 3, 8, 9
																								black spots 3-5 mm; black nodules 2-4mm at cm16, 21, 26
																								black patches
																								black spots 5-10 mm; black nodule 6 mm at cm 49
																								black thin layer
																								black streaks 8-10 mm
																								black smudges
																								bioturbated black smudges
																								bioturbated black spots 2-5 mm
																								CC in bag

M0089C

1 of 1

Curated core depth (mbsf)	Core section	XCT image (stretched)	Linescan (stretched)	Void (V) or whole round (WR) interval	VCD grain size estimate	Tephra VCD observations	Close up photos (midpoint)	Smear slides	Sedimentary structures	Accessories	Top contact	Base contact	Coring disturbance	Bioturbation intensity	Iron monosulfide abundance	Color	Additional Observations
					Clay Clayey silt / silty clay Clay-silt-sand Silt Silty sand / sandy silt Very fine sand Fine sand Medium sand				Parallel laminated Wavy laminated Convolute Chaotic Graded Other sedimentary structures					1 2 3 4 5 0 1 2 3			

0				V				• • • • +									
1																	
2																	
																7.5Y 5/2	black spots / streaks 3 mm
																	black spots 3-8 mm
																	black smudges
																	CC in bag

M0089D

1 of 13

Curated core depth (mbsf)	Core section	XCT image (stretched)	Linescan (stretched)	Void (V) or whole round (WR) interval	VCD grain size estimate							Tephra VCD observations	Close up photos (midpoint)	Smear slides	Sedimentary structures				Accessories	Top contact	Base contact	Coring disturbance	Bioturbation intensity					Iron monosulfide abundance			Color	Additional Observations	
					Clay	Clayey silt / silty clay	Clay-silt-sand	Silt	Silty sand / sandy silt	Very fine sand	Fine sand				Medium sand	1	2	3					4	5	0	1	2	3					
0																																	black streaks 5-8 mm
1																																black spots 3-5 mm	
1																																black spots 10-15 mm	
1																																black spots 5-8 mm	
2																																	black spots 8-15 mm
2																																	black spots 3 mm
2																																	black spots 5 mm
2				V WR																													Vitrasalo WR
3																																	black spots 3-5 mm
3																																	black spots 3-5 mm
3																																	black patches
3																																	black patches
3																																	black spots 5-10 mm
3																																	

M0089D

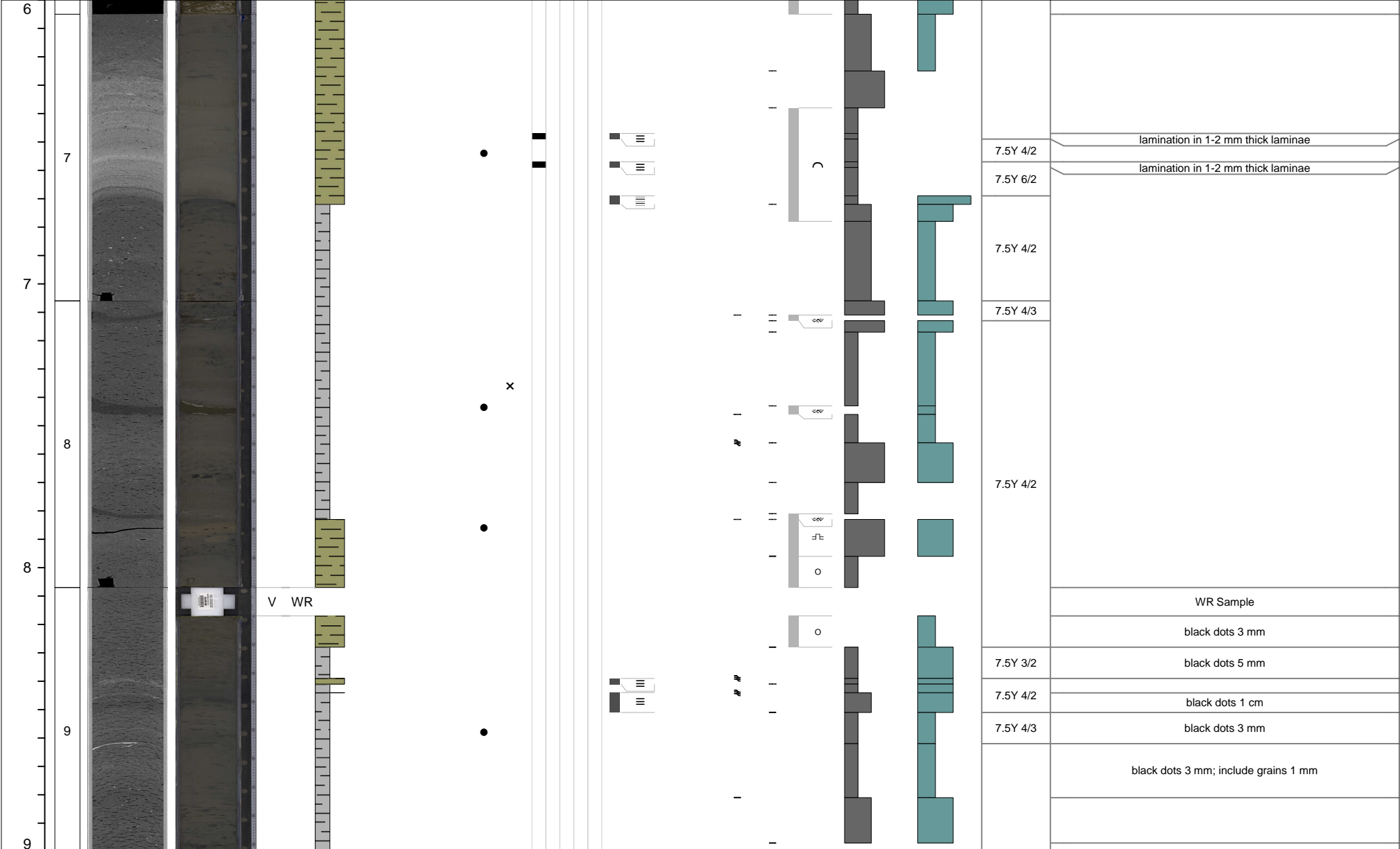
2 of 13

Curated core depth (mbsf)	Core section	XCT image (stretched)	Linescan (stretched)	Void (V) or whole round (WR) interval	VCD grain size estimate						Tephra VCD observations	Close up photos (midpoint)	Smear slides	Sedimentary structures					Accessories	Top contact	Base contact	Coring disturbance	Bioturbation intensity					Iron monosulfide abundance			Color	Additional Observations
					Clay	Clayey silt / silty clay	Clay-silt-sand	Silt	Silty sand / sandy silt	Very fine sand				Fine sand	Medium sand	1	2	3					4	5	0	1	2	3				
3																																black streaks 3-5 mm black streaks 2-3 cm long bioturbated black patches 5-10 mm
4																															greyish olive (7.5Y5/2) spots 5-10 mm, bioturbation black streaks	
4																															bioturbated black spots 3-5 mm bioturbated black streaks 2 mm bioturbated black spots 5-10 mm bioturbated black smudges	
4																															Vitralsalo WR	
5																															7.5Y 4/2	
5																															interlaminated clay, silty clay, and silt	
5																															interlaminated clay, silty clay, and silt	
5																															7.5Y 4/2 7.5Y 5/2 7.5Y 4/2	
6																																yellowish brown proposed as 2Y 5/6 not available in list black streaks 2-3 cm black patches
6																															Black spots 5-10 mm; Possible sediment loss and deformation cm 94-100 (Ant)	
6																															7.5Y 6/2	

M0089D

3 of 13

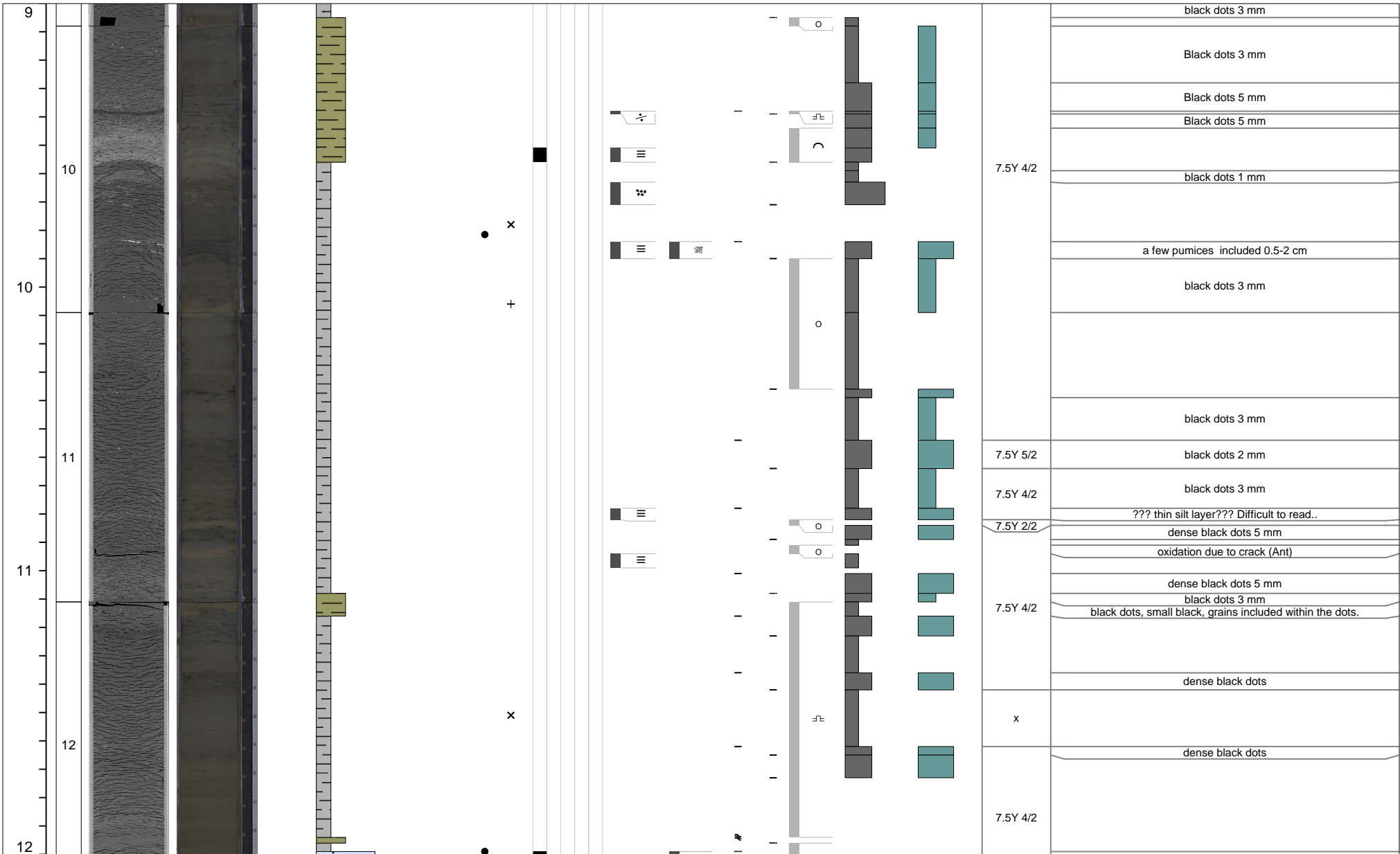
Curated core depth (mbsf)	Core section	XCT image (stretched)	Linescan (stretched)	Void (V) or whole round (WR) interval	VCD grain size estimate						Tephra VCD observations	Close up photos (midpoint)	Smear slides	Sedimentary structures					Accessories	Top contact	Base contact	Coring disturbance	Bioturbation intensity					Iron monosulfide abundance			Color	Additional Observations
					Clay	Clayey silt / silty clay	Clay-silt-sand	Silt	Silty sand / sandy silt	Very fine sand				Fine sand	Medium sand	Parallel laminated	Wavy laminated	Convolute					Chaotic	Graded	Other sedimentary structures	1	2	3	4	5		



M0089D

4 of 13

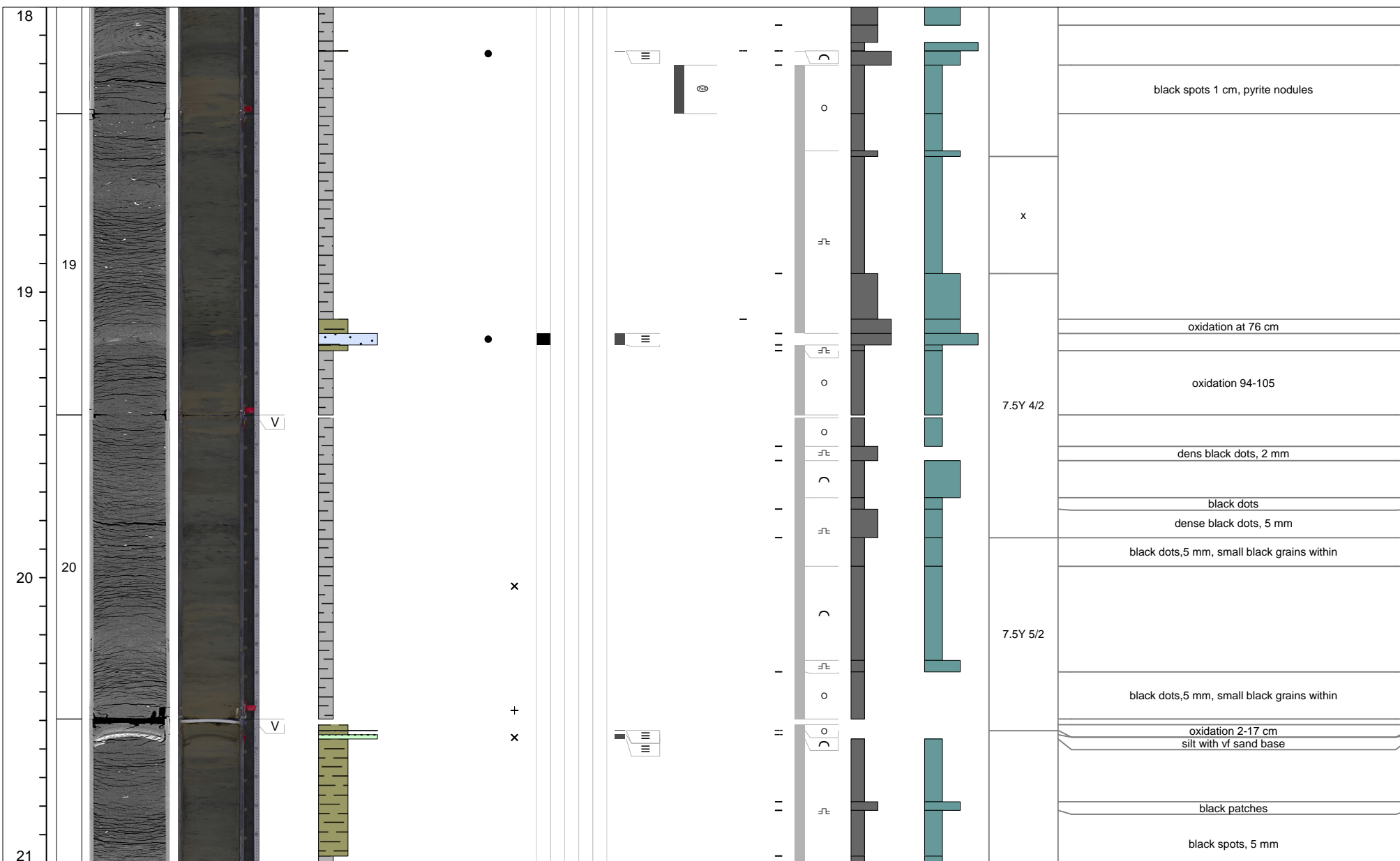
Curated core depth (mbsf)	Core section	XCT image (stretched)	Linescan (stretched)	Void (V) or whole round (WR) interval	VCD grain size estimate						Tephra VCD observations	Close up photos (midpoint)	Smear slides	Sedimentary structures					Other sedimentary structures	Accessories	Top contact	Base contact	Coring disturbance	Bioturbation intensity					Iron monosulfide abundance			Color	Additional Observations
					Clay	Clayey silt / silty clay	Clay-silt-sand	Silt	Silty sand / sandy silt	Very fine sand				Fine sand	Medium sand	Parallel laminated	Wavy laminated	Convolute						Chaotic	Graded	1	2	3	4	5	0		



M0089D

7 of 13

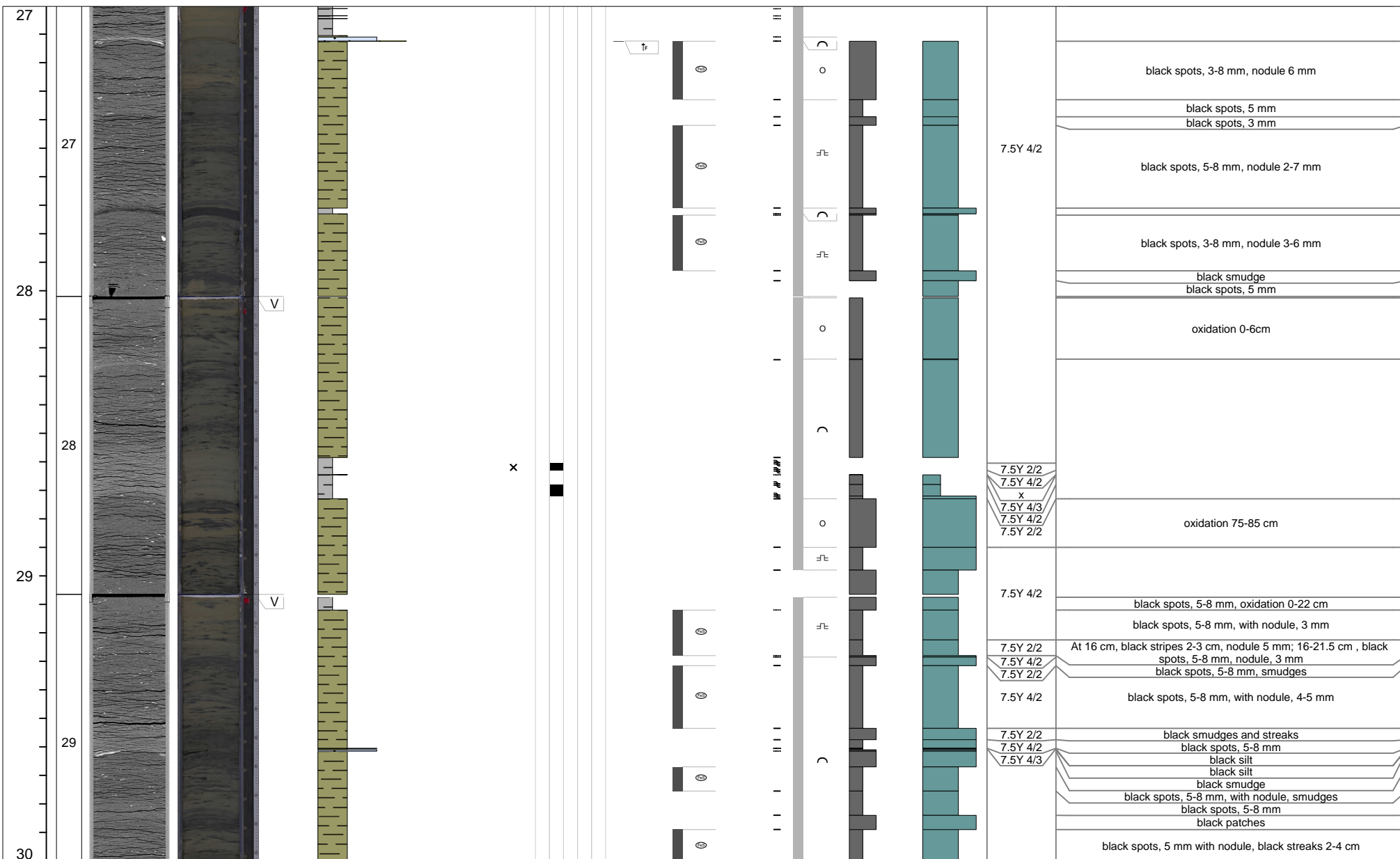
Additional Observations



M0089D

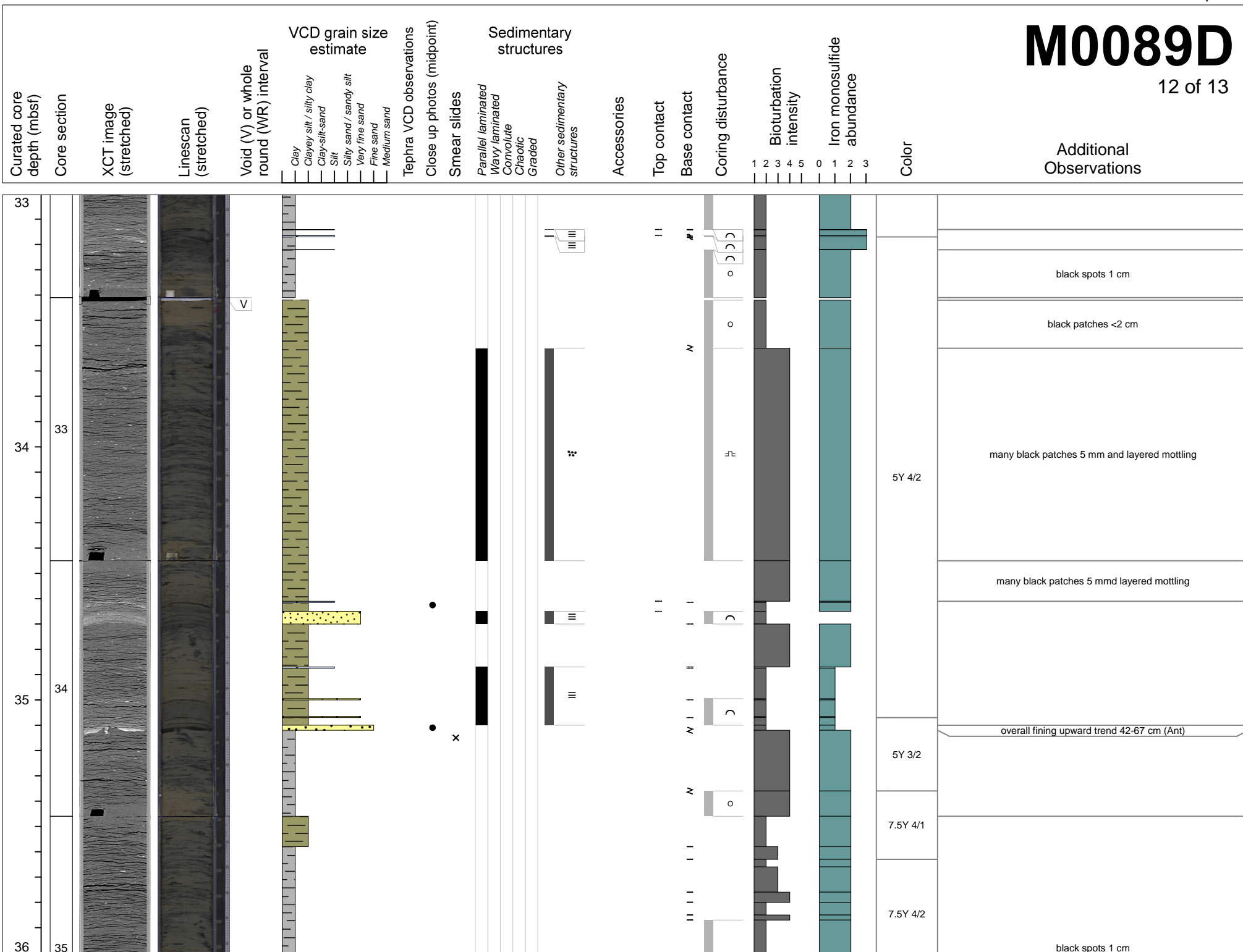
10 of 13

Curated core depth (mbsf)	Core section	XCT image (stretched)	Linescan (stretched)	Void (V) or whole round (WR) interval	VCD grain size estimate	Tephra VCD observations	Close up photos (midpoint)	Smear slides	Sedimentary structures	Other sedimentary structures	Accessories	Top contact	Base contact	Coring disturbance	Bioturbation intensity	Iron monosulfide abundance	Color	Additional Observations
					Clay Clayey silt / silty clay Clay-silt-sand Silt Silty sand / sandy silt Very fine sand Fine sand Medium sand				Parallel laminated Wavy laminated Convolute Chaotic Graded					1 2 3 4 5	0 1 2 3			



M0089D

12 of 13



M0089D

13 of 13

Curated core depth (mbsf)	Core section	XCT image (stretched)	Linescan (stretched)	Void (V) or whole round (WR) interval	VCD grain size estimate	Sedimentary structures	Accessories	Top contact	Base contact	Coring disturbance	Bioturbation intensity	Iron monosulfide abundance	Color	Additional Observations
					Clay Clayey silt / silty clay Clay-silt-sand Silt Silty sand / sandy silt Very fine sand Fine sand Medium sand	Parallel laminated Wavy laminated Convolute Chaotic Graded Other sedimentary structures					1 2 3 4 5 0 1 2 3			

