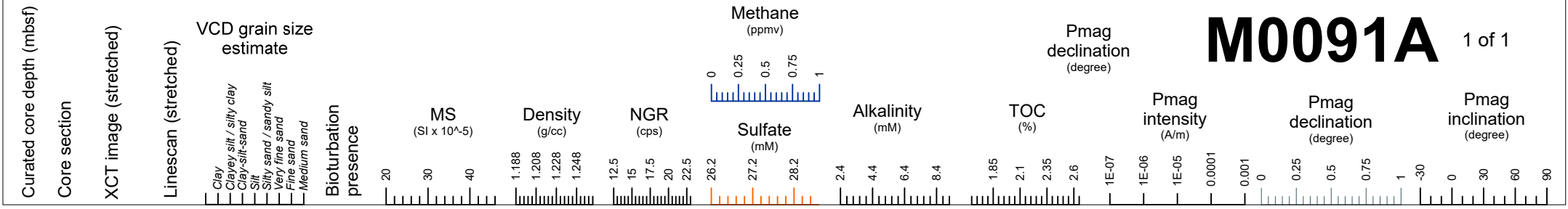
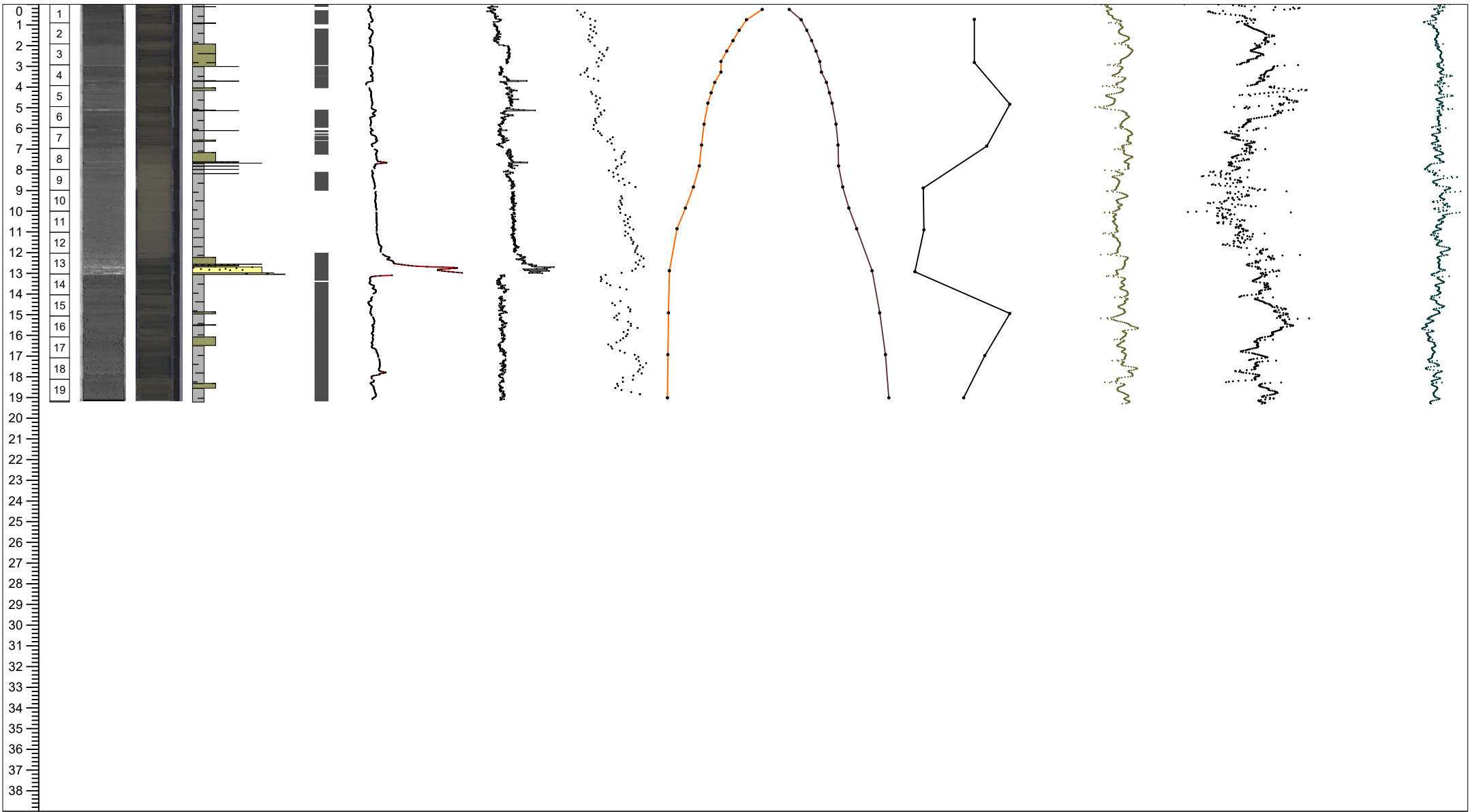
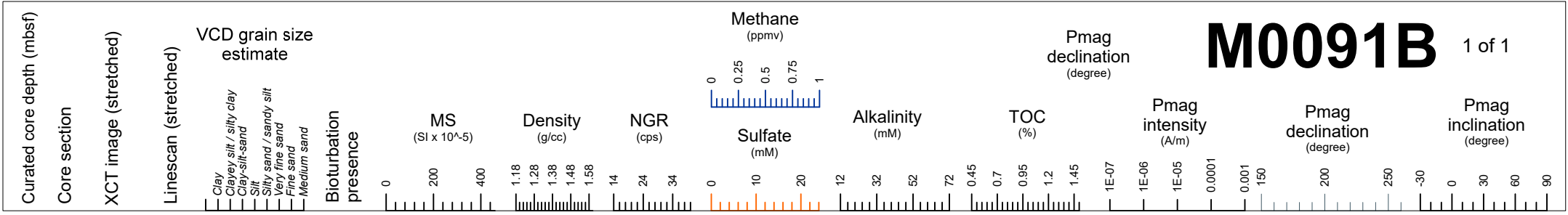


M0091A

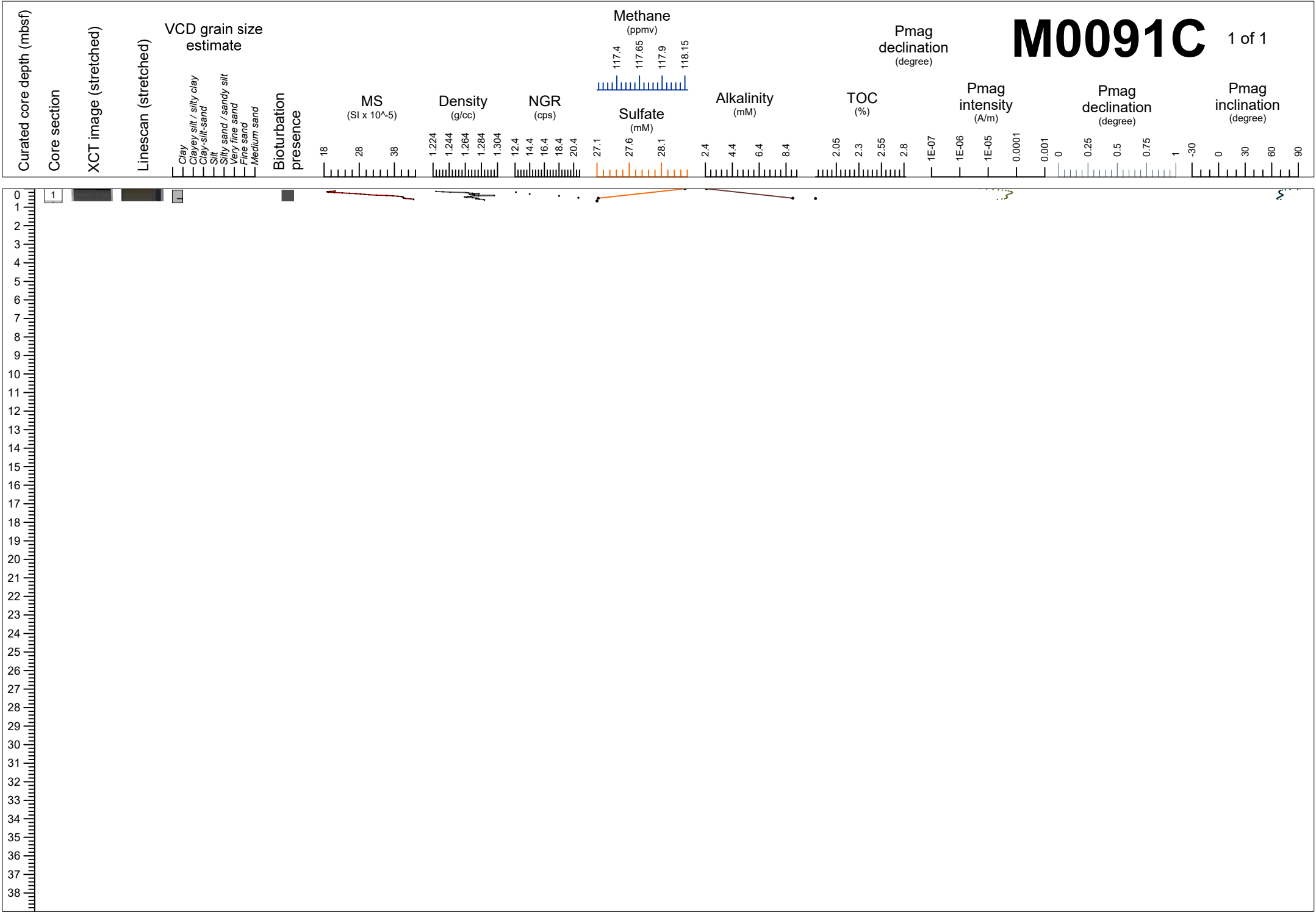
1 of 1



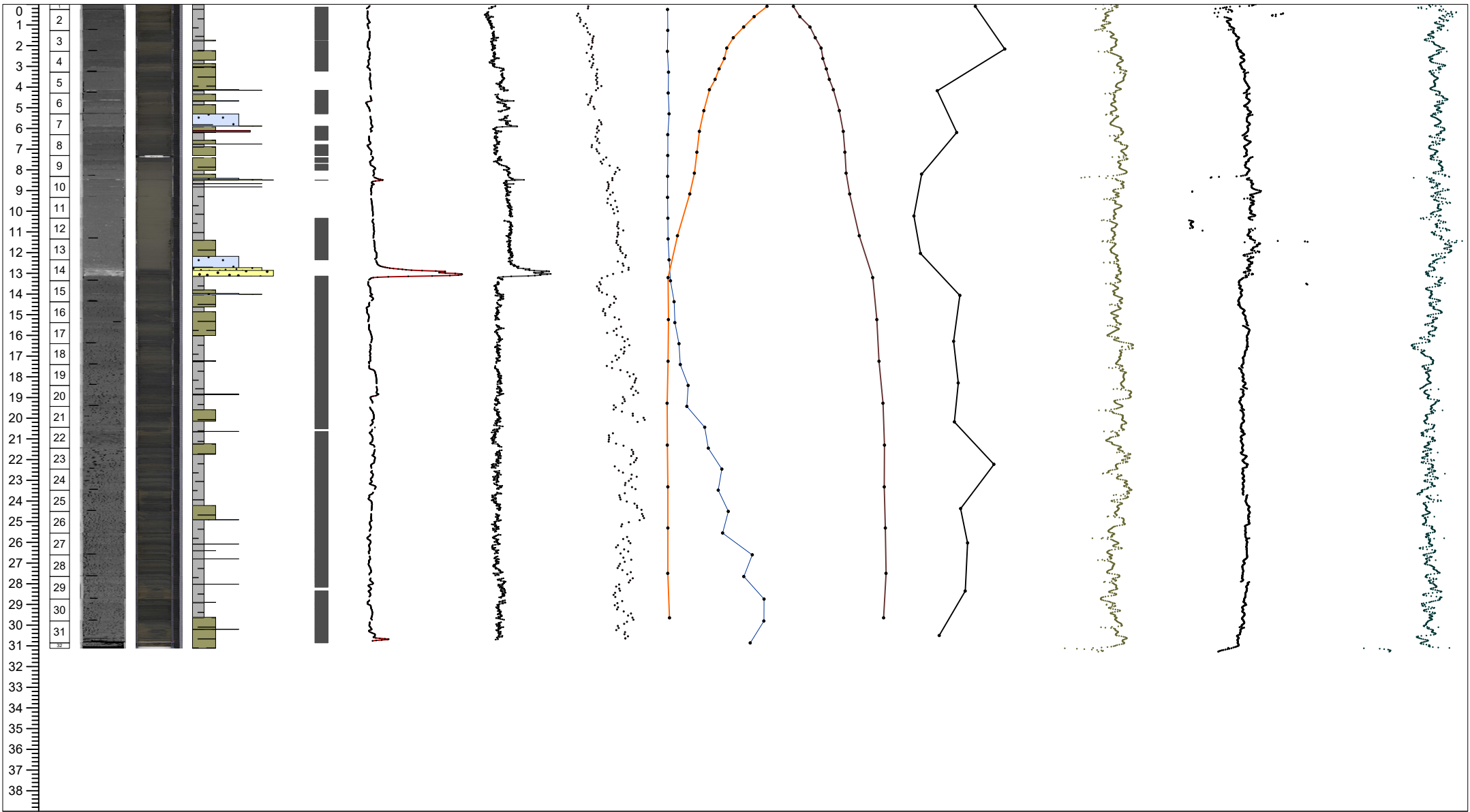
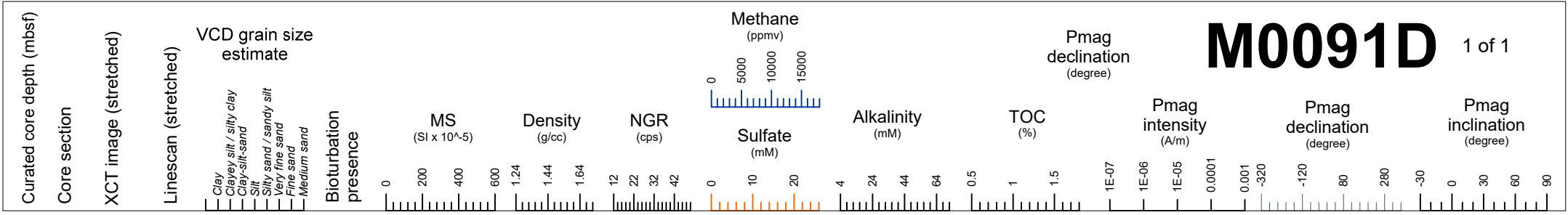
M0091B 1 of 1



M0091C 1 of 1



M0091D 1 of 1



M0091A

1 of 1

Curated core depth (mbsf)	Core section	XCT image (stretched)	Linescan (stretched)	Void (V) or whole round (WR) interval	VCD grain size estimate	Sedimentary structures	Accessories	Top contact	Base contact	Coring disturbance	Bioturbation intensity	Iron monosulfide abundance	Color	Additional Observations
					Clay Clayey silt / silty clay Clay-silt-sand Silt Silty sand / sandy silt Very fine sand Fine sand Medium sand	Parallel laminated Wavy laminated Convolute Chaotic Graded Other sedimentary structures					1 2 3 4 5 0 1 2 3			

0

1

2

V

•

x

+

|

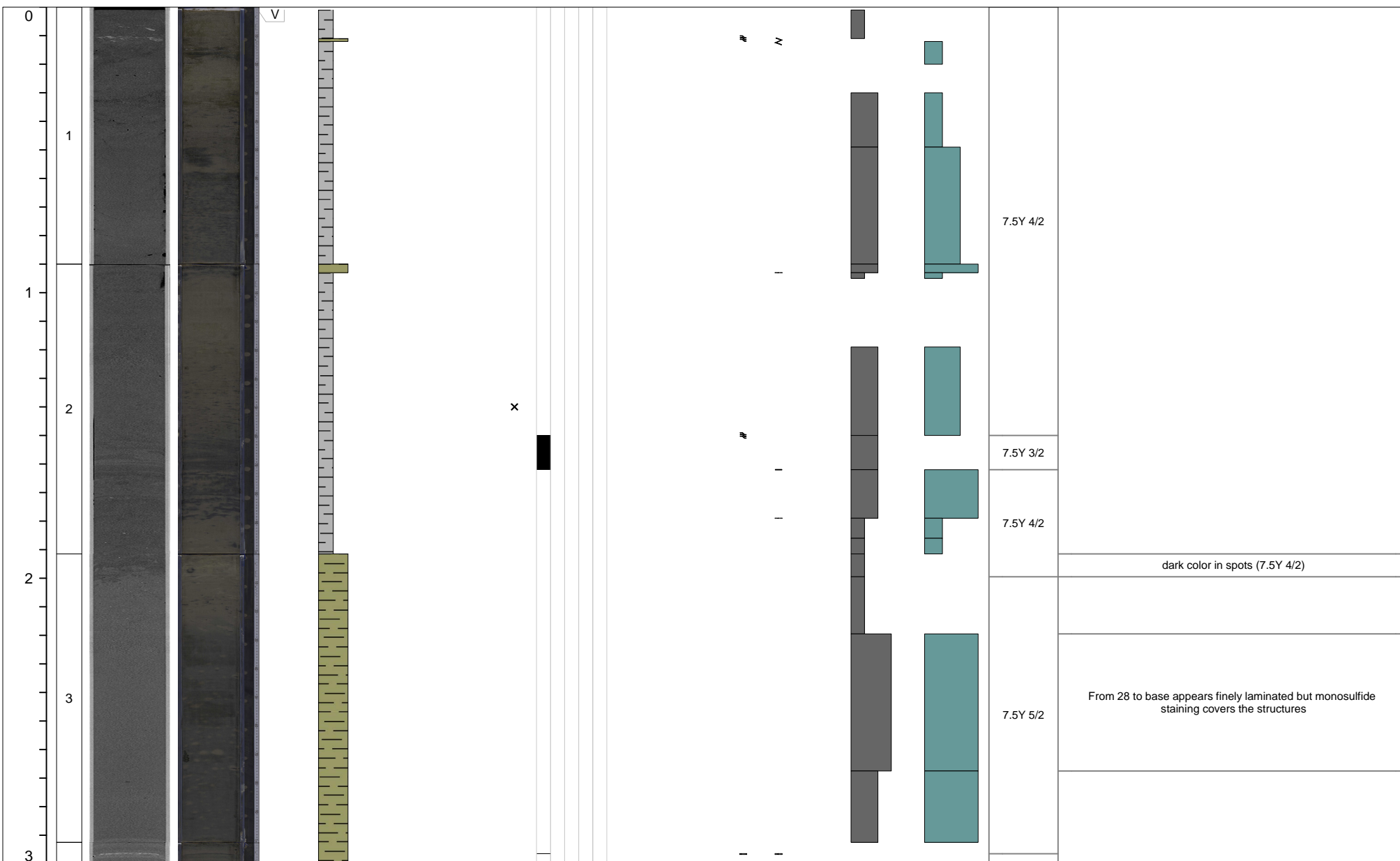
N N I

5Y 5/2	SS @ 40; slight silt content
7.5Y 4/2	CC in bag

M0091B

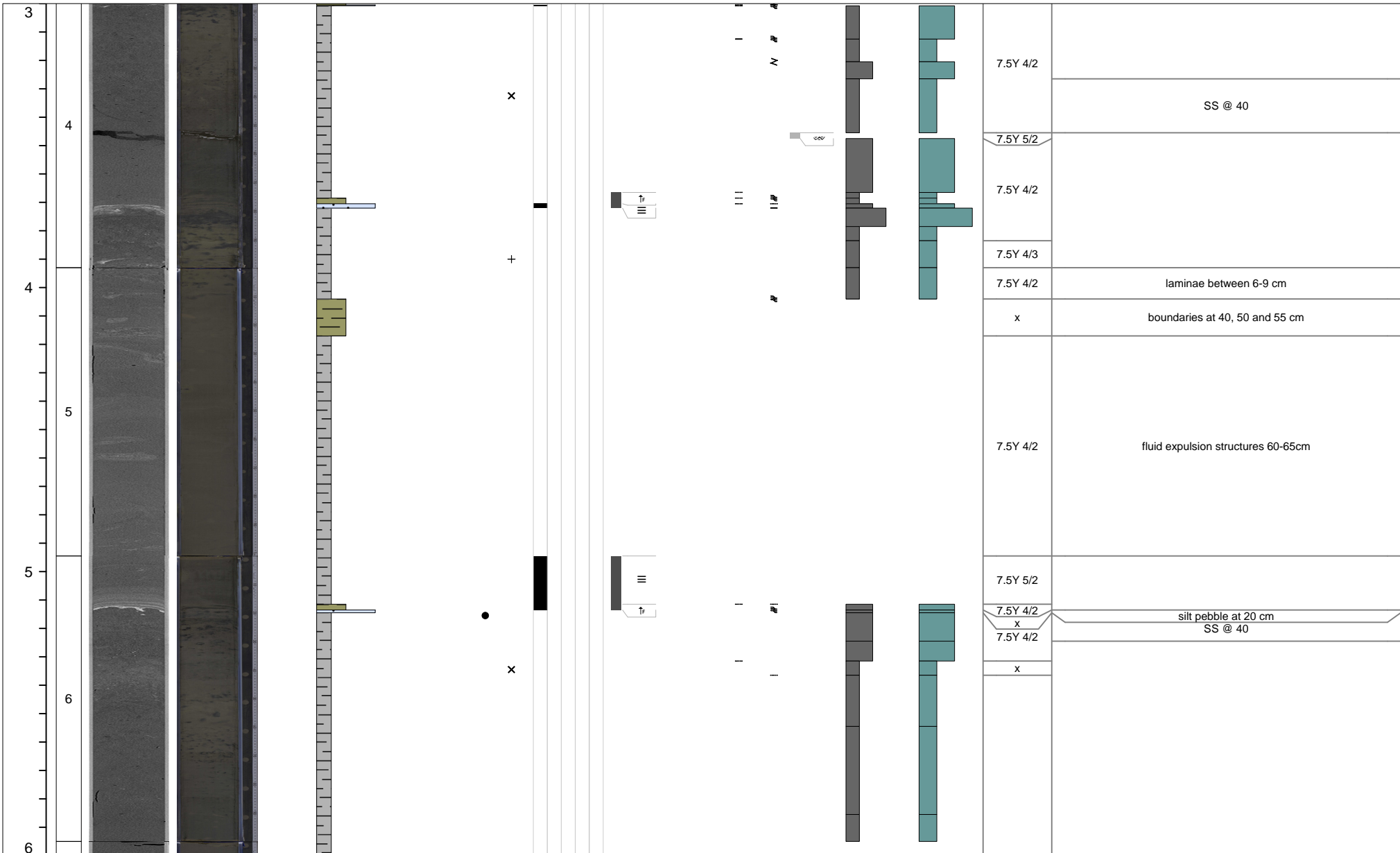
1 of 7

Additional Observations



M0091B

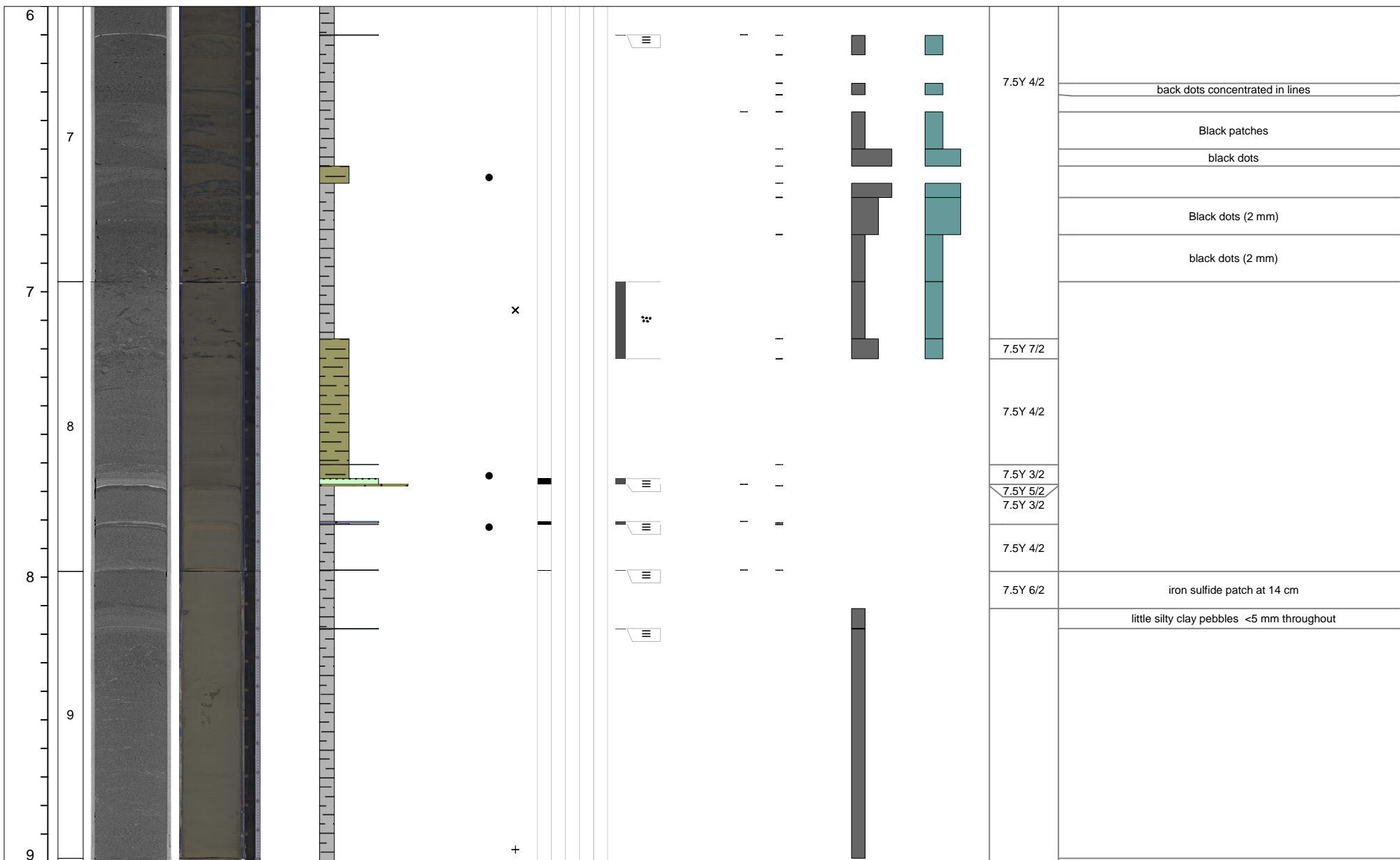
2 of 7



M0091B

3 of 7

Curated core depth (mbsf)	Core section	XCT image (stretched)	Linescan (stretched)	Void (V) or whole round (WR) interval	VCD grain size estimate							Tephra VCD observations	Close up photos (midpoint)	Smear slides	Sedimentary structures					Accessories	Top contact	Base contact	Coring disturbance	Bioturbation intensity					Iron monosulfide abundance			Color	Additional Observations
					Clay	Clayey silt / silty clay	Clay-silt-sand	Silt	Silty sand / sandy silt	Very fine sand	Fine sand				Medium sand	Parallel laminated	Wavy laminated	Convolute	Chaotic					Graded	Other sedimentary structures	1	2	3	4	5	0		



M0091B

4 of 7

Curated core depth (mbsf)	Core section	XCT image (stretched)	Linescan (stretched)	Void (V) or whole round (WR) interval	VCD grain size estimate						Tephra VCD observations	Close up photos (midpoint)	Smear slides	Sedimentary structures					Other sedimentary structures	Accessories	Top contact	Base contact	Coring disturbance	Bioturbation intensity					Iron monosulfide abundance			Color	Additional Observations
					Clay	Clayey silt / silty clay	Clay-silt-sand	Silt	Silty sand / sandy silt	Very fine sand				Fine sand	Medium sand	1	2	3						4	5	0	1	2	3				
9																																	
10												x																		7.5Y 4/2	Very slight bioturb clay with very little silty clay pebbles (< 5 mm scale at 31 cm and 40 cm) + potential boundary at 50 cm		
11																															Very slight bioturb clay with very little silty clay pebbles (< 5 mm scale at 12 cm) and very little black dots (< 2 mm)		
11																																	
12												x																			Very slight bioturb clay with little black spots (< 3 mm)		
12																																	

M0091B

5 of 7

Curated core depth (mbsf)	Core section	XCT image (stretched)	Linescan (stretched)	Void (V) or whole round (WR) interval	VCD grain size estimate						Tephra VCD observations	Close up photos (midpoint)	Smear slides	Sedimentary structures					Accessories	Top contact	Base contact	Coring disturbance	Bioturbation intensity					Iron monosulfide abundance			Color	Additional Observations					
					Clay	Clayey silt / silty clay	Clay-silt-sand	Silt	Silty sand / sandy silt	Very fine sand				Fine sand	Medium sand	Parallel laminated	Wavy laminated	Convolute					Chaotic	Graded	Other sedimentary structures	1	2	3	4	5			0	1	2	3	
12																																					
13																																				possible flame structure? Joel	
13																																				fining upward	
14																																				SS at 80 cm	
14																																					
15																																					
15																																					Oxidized along the vertical cracks

M0091B

6 of 7

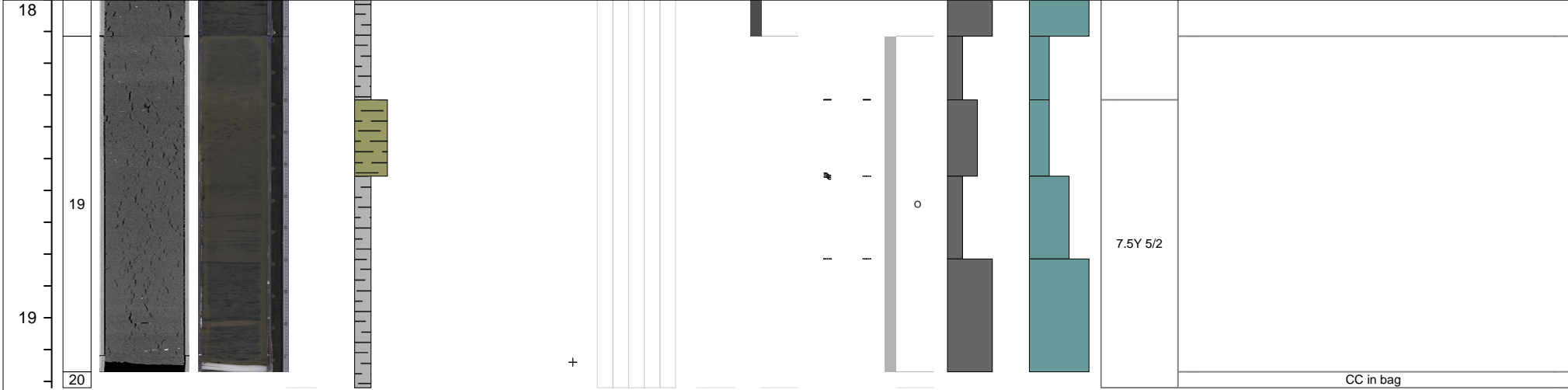
Curated core depth (mbsf)	Core section	XCT image (stretched)	Linescan (stretched)	Void (V) or whole round (WR) interval	VCD grain size estimate							Tephra VCD observations	Close up photos (midpoint)	Smear slides	Sedimentary structures				Accessories	Top contact	Base contact	Coring disturbance	Bioturbation intensity					Iron monosulfide abundance			Color	Additional Observations
					Clay	Clayey silt / silty clay	Clay-silt-sand	Silt	Silty sand / sandy silt	Very fine sand	Fine sand				Medium sand	1	2	3					4	5	0	1	2	3				

15																																			black dots, sharp boundary is a sharp contact bw sparse and abundant black dots
16																																		dense black dots	
16																																		dense black dots	
16																																		black dots	
17																																		black spots, burrows nereites? Chondrites	
17																																		gradational grain size (g) and bioturbation (b); some black spots; burrows nereites? Chondrites	
17																																	7.5Y 6/2		
18																																		@75 cm, one 3mm nodule; @80 three 3mm nodules	

M0091B

7 of 7

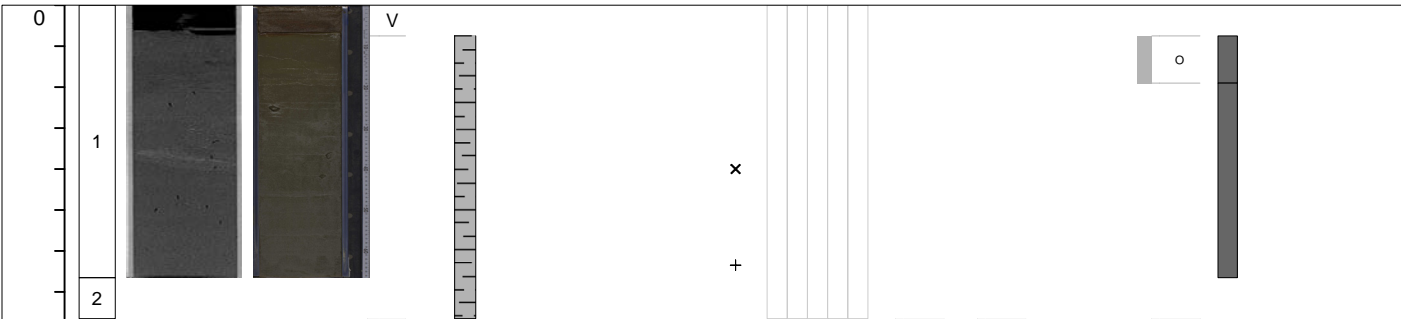
Curated core depth (mbsf)	Core section	XCT image (stretched)	Linescan (stretched)	Void (V) or whole round (WR) interval	VCD grain size estimate	Tephra VCD observations	Close up photos (midpoint)	Smear slides	Sedimentary structures	Other sedimentary structures	Accessories	Top contact	Base contact	Coring disturbance	Bioturbation intensity	Iron monosulfide abundance	Color	Additional Observations
					Clay Clayey silt / silty clay Clay-silt-sand Silt Silty sand / sandy silt Very fine sand Fine sand Medium sand				Parallel laminated Wavy laminated Convolute Chaotic Graded					1 2 3 4 5	0 1 2 3			



M0091C

1 of 1

Curated core depth (mbsf)	Core section	XCT image (stretched)	Linescan (stretched)	Void (V) or whole round (WR) interval	VCD grain size estimate	Sedimentary structures	Accessories	Top contact	Base contact	Coring disturbance	Bioturbation intensity	Iron monosulfide abundance	Color	Additional Observations
					Clay Clayey silt / silty clay Clay-silt-sand Silt Silty sand / sandy silt Very fine sand Fine sand Medium sand	Parallel laminated Wavy laminated Convolute Chaotic Graded Other sedimentary structures					1 2 3 4 5 0 1 2 3			

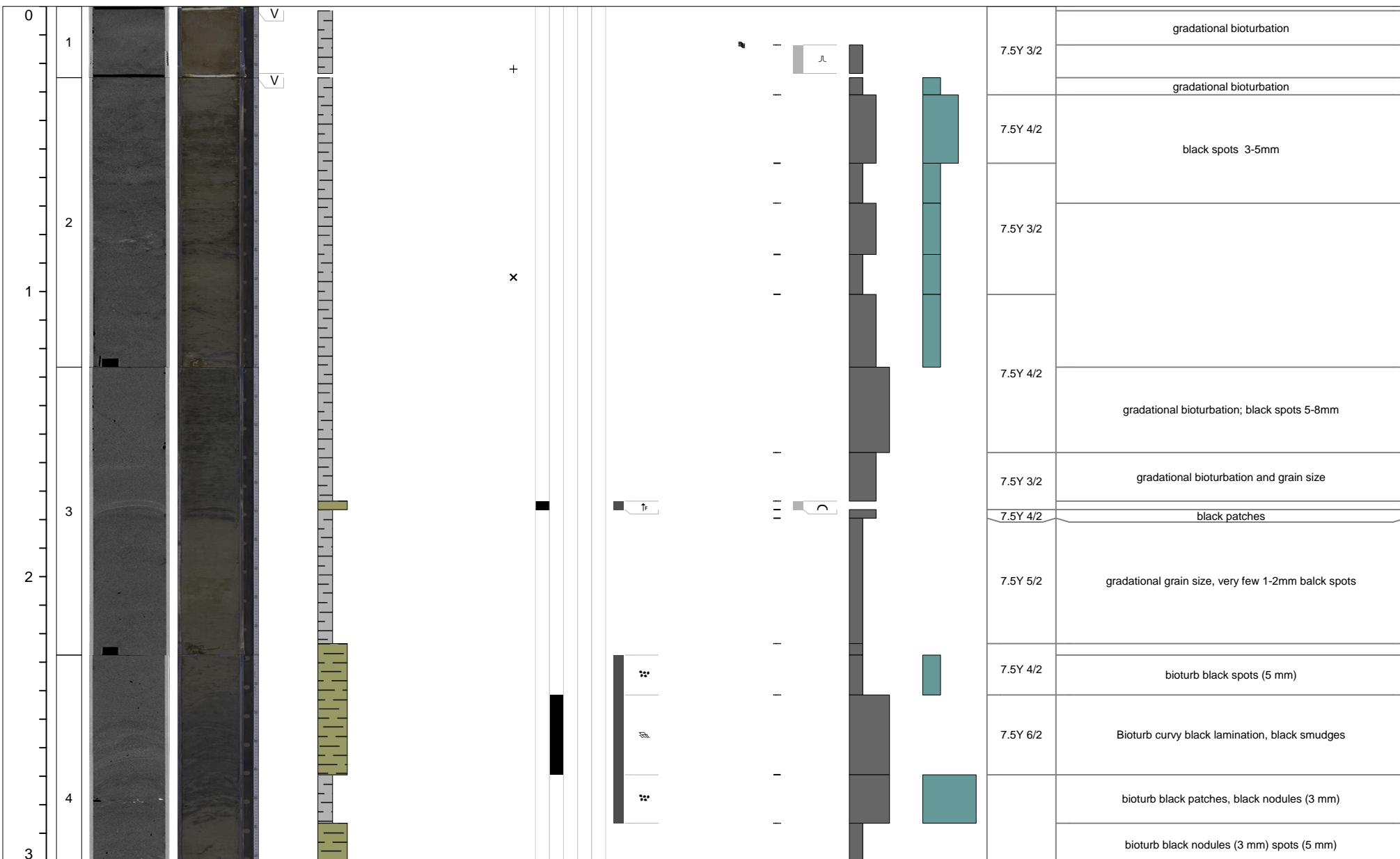


7.5Y 4/2	
7.5Y 6/2	top surface oxydized
7.5Y 5/2	some open 1 cm-scale pores
7.5Y 3/2	In bag

M0091D

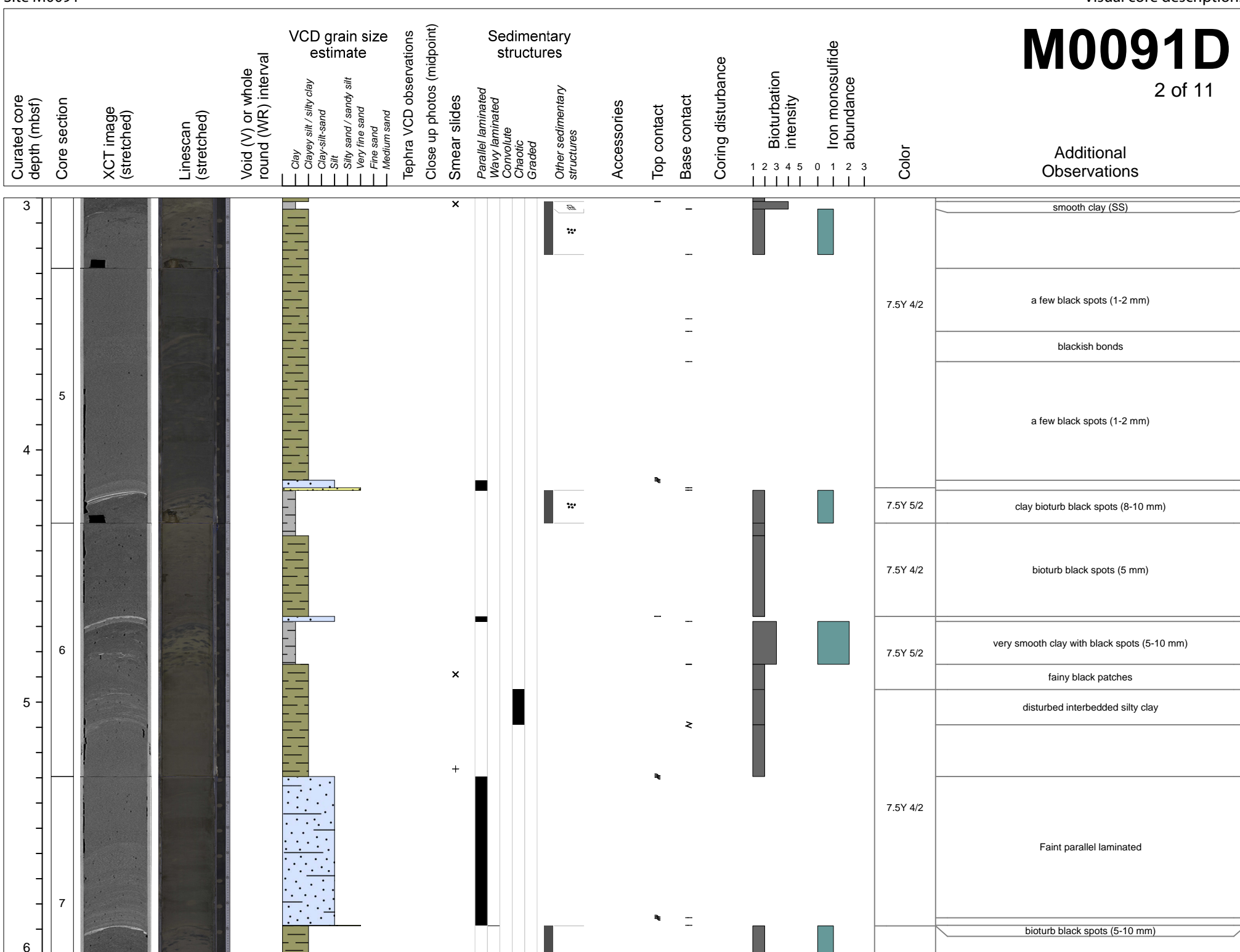
1 of 11

Curated core depth (mbsf)	Core section	XCT image (stretched)	Linescan (stretched)	Void (V) or whole round (WR) interval	VCD grain size estimate						Tephra VCD observations	Close up photos (midpoint)	Smear slides	Sedimentary structures					Accessories	Top contact	Base contact	Coring disturbance	Bioturbation intensity					Iron monosulfide abundance			Color	Additional Observations
					Clay	Clayey silt / silty clay	Clay-silt-sand	Silt	Silty sand / sandy silt	Very fine sand				Fine sand	Medium sand	Parallel laminated	Wavy laminated	Convolute					Chaotic	Graded	Other sedimentary structures	1	2	3	4	5		



M0091D

2 of 11



M0091D

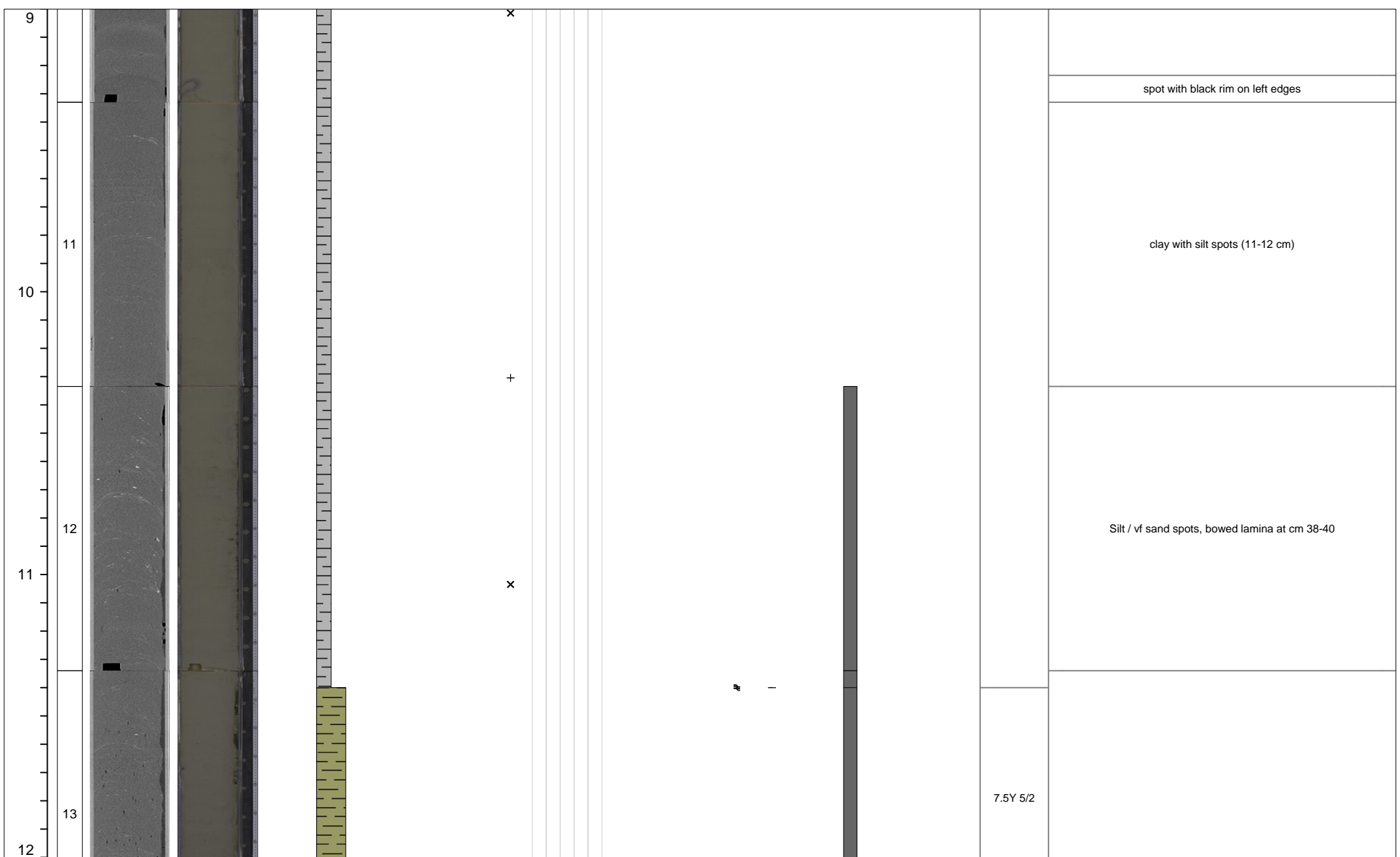
3 of 11

Curated core depth (mbsf)	Core section	XCT image (stretched)	Linescan (stretched)	Void (V) or whole round (WR) interval	VCD grain size estimate						Tephra VCD observations	Close up photos (midpoint)	Smear slides	Sedimentary structures					Accessories	Top contact	Base contact	Coring disturbance	Bioturbation intensity					Iron monosulfide abundance			Color	Additional Observations
					Clay	Clayey silt / silty clay	Clay-silt-sand	Silt	Silty sand / sandy silt	Very fine sand				Fine sand	Medium sand	Parallel laminated	Wavy laminated	Convolute					Chaotic	Graded	Other sedimentary structures	1	2	3	4	5		
6																											7.5Y 3/2					
																											7.5Y 5/2	tephra patches/spots (slit) within silty clay change in grain size				
																												black spots (2-3 mm)				
8																												very smooth clay black patches				
7																												laminae like black streaks				
																												black patches				
																												SILVER WR SAMPLE				
				V WR																								bioturb black smudges				
																												black spots (5-10 mm)				
9																												black spots (5-10 mm)				
8																												silt patches				
																												silt spots (2-3 mm): "small silt blocks from remobilization ?"				
																												silt spots (2-3 mm)				
10																																
9																										7.5Y 4/2						

Curated core depth (mbsf)	Core section	XCT image (stretched)	Linescan (stretched)	Void (V) or whole round (WR) interval	VCD grain size estimate	VCD observations	Close up photos (midpoint)	Smear slides	Sedimentary structures	Other sedimentary structures	Accessories	Top contact	Base contact	Coring disturbance	Bioturbation intensity	Iron monosulfide abundance	Color	Additional Observations
					Clay	Tephra			Parallel laminated						1 2 3 4 5	0 1 2 3		

M0091D

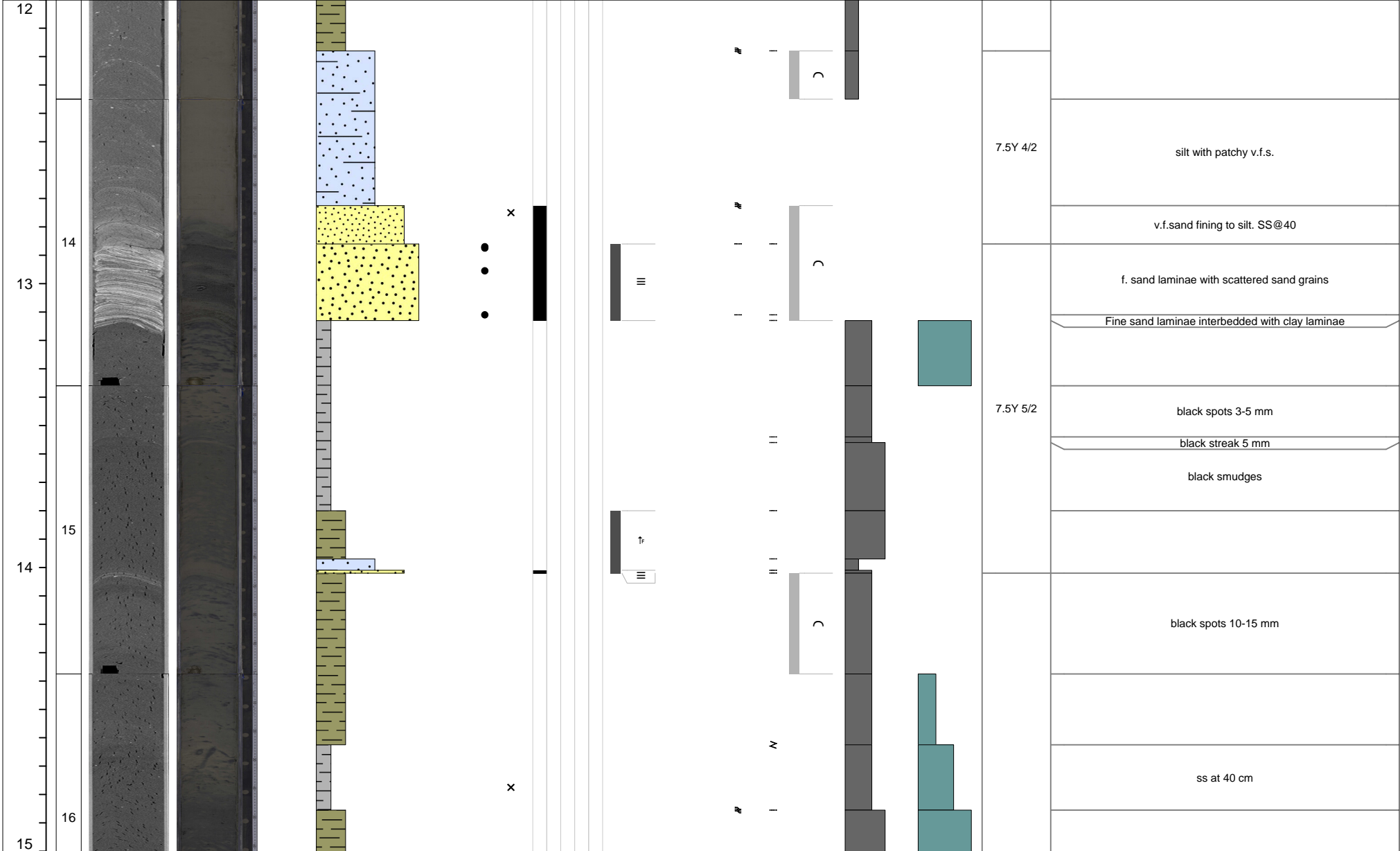
4 of 11



M0091D

5 of 11

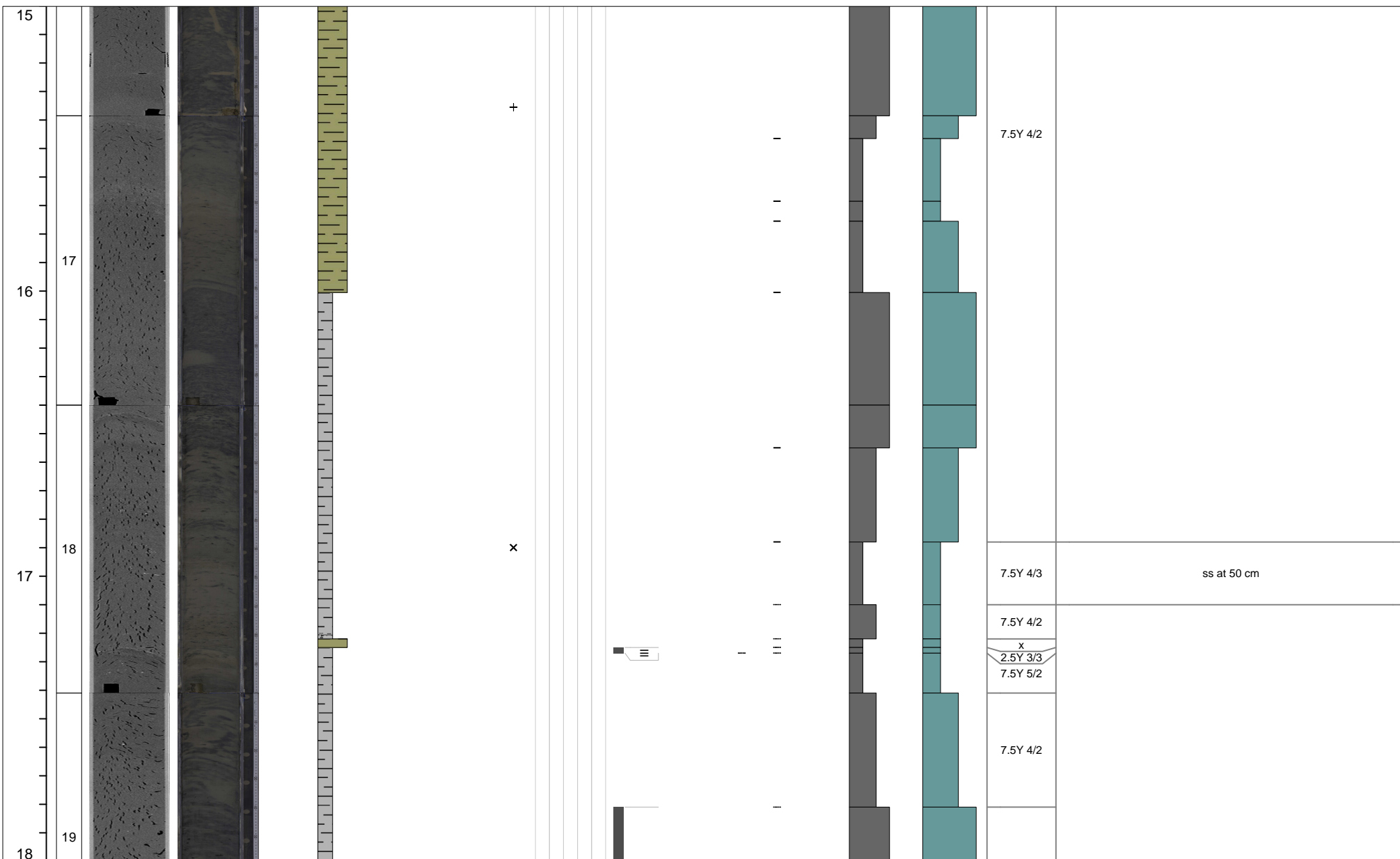
Curated core depth (mbsf)	Core section	XCT image (stretched)	Linescan (stretched)	Void (V) or whole round (WR) interval	VCD grain size estimate						Tephra VCD observations	Close up photos (midpoint)	Smear slides	Sedimentary structures					Accessories	Top contact	Base contact	Coring disturbance	Bioturbation intensity					Iron monosulfide abundance			Color	Additional Observations
					Clay	Clayey silt / silty clay	Clay-silt-sand	Silt	Silty sand / sandy silt	Very fine sand				Fine sand	Medium sand	Parallel laminated	Wavy laminated	Convolute					Chaotic	Graded	Other sedimentary structures	1	2	3	4	5		



M0091D

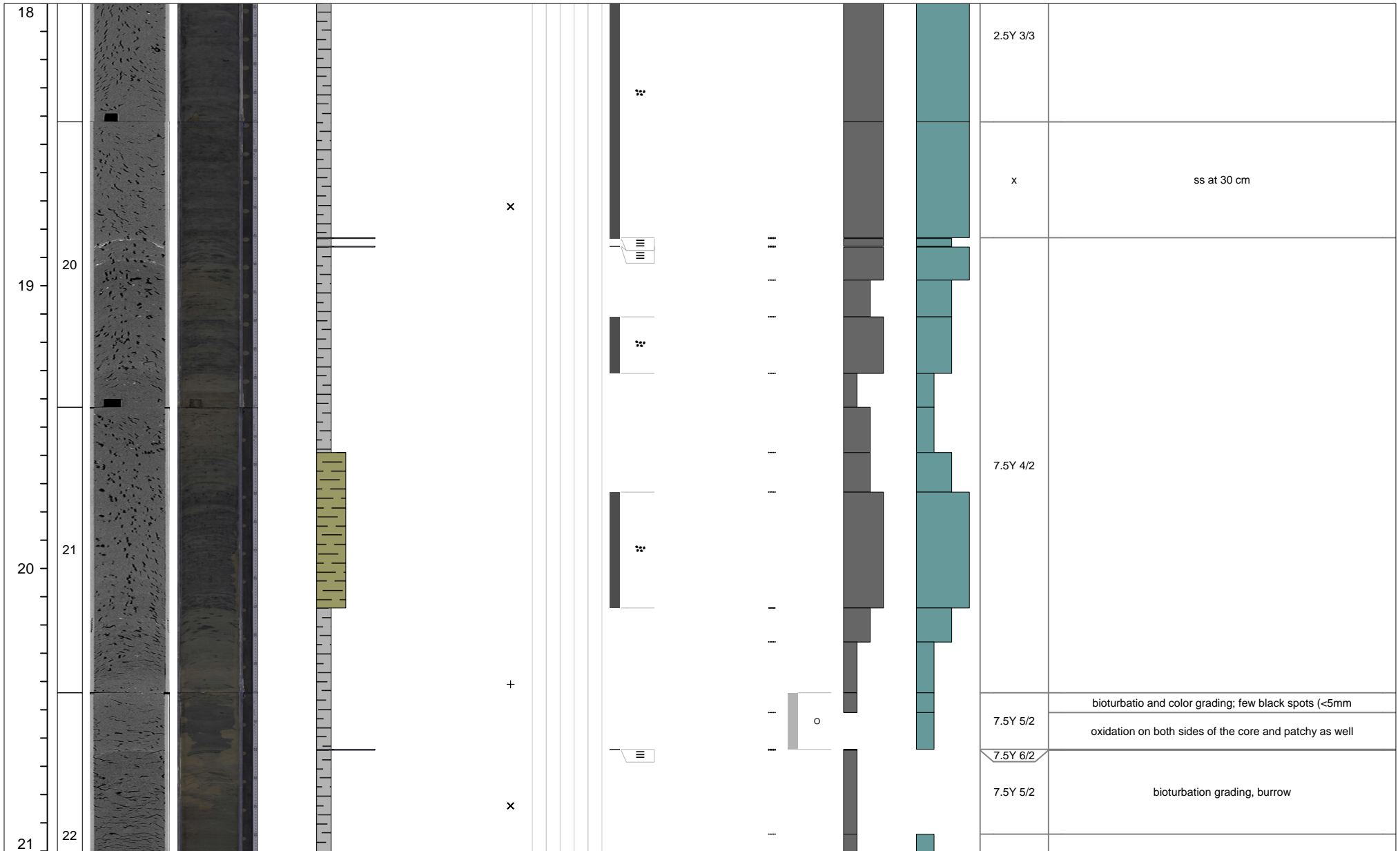
6 of 11

Curated core depth (mbsf)	Core section	XCT image (stretched)	Linescan (stretched)	Void (V) or whole round (WR) interval	VCD grain size estimate							Tephra VCD observations	Close up photos (midpoint)	Smear slides	Sedimentary structures				Accessories	Top contact	Base contact	Coring disturbance	Bioturbation intensity					Iron monosulfide abundance			Color	Additional Observations
					Clay	Clayey silt / silty clay	Clay-silt-sand	Silt	Silty sand / sandy silt	Very fine sand	Fine sand				Medium sand	Parallel laminated	Wavy laminated	Convolute					Chaotic	Graded	Other sedimentary structures	1	2	3	4	5		



M0091D

7 of 11



Additional Observations

M0091D

8 of 11

Additional Observations

Curated core depth (mbsf)	Core section	XCT image (stretched)	Linescan (stretched)	Void (V) or whole round (WR) interval	VCD grain size estimate							Tephra VCD observations	Close up photos (midpoint)	Smear slides	Sedimentary structures					Accessories	Top contact	Base contact	Coring disturbance	Bioturbation intensity					Iron monosulfide abundance			Color	Additional Observations				
					Clay	Clayey silt / silty clay	Clay-silt-sand	Silt	Silty sand / sandy silt	Very fine sand	Fine sand				Medium sand	1	2	3	4					5	0	1	2	3									
21																																				few black spots <3mm	
																																					mm scale black dots
																																					Burrows, black dots 1mm
22	23																																			black dots 3mm	
																																					black dots 3mm, gradational bioturbation
																																				black dots 3mm	
																																				black dots 1mm	
																																				black patches 1cm	
																																				black dots 1mm	
23	24																																			black dots 5mm	
																																				black dots 1mm	
																																				black patches 1cm	
																																				black dots 3mm	
																																				black dots 5mm	
																																				side oxydation	
																																				few black spots <5mm	
																																				some black spots <3mm	
24	25																																				

M0091D

9 of 11

Curated core depth (mbsf)	Core section	XCT image (stretched)	Linescan (stretched)	Void (V) or whole round (WR) interval	VCD grain size estimate						Tephra VCD observations	Close up photos (midpoint)	Smear slides	Sedimentary structures				Accessories	Top contact	Base contact	Coring disturbance	Bioturbation intensity					Iron monosulfide abundance			Color	Additional Observations			
					Clay	Clayey silt / silty clay	Clay-silt-sand	Silt	Silty sand / sandy silt	Very fine sand				Fine sand	Medium sand	Parallel laminated	Wavy laminated					Convolute	Chaotic	Graded	Other sedimentary structures	1	2	3	4			5	0	1
24																																		some burrowing mottling@40cm
25	26											x																					lateral oxidation	
26																																	black dots <3mm	
26	27																																black dots <5mm	
																																	black dots <3mm	
																																	black patches 1cm	
																																	black dots <3mm	
																																	black dots <3mm	
																																	black dots <3mm	
																																	black dots <3mm	

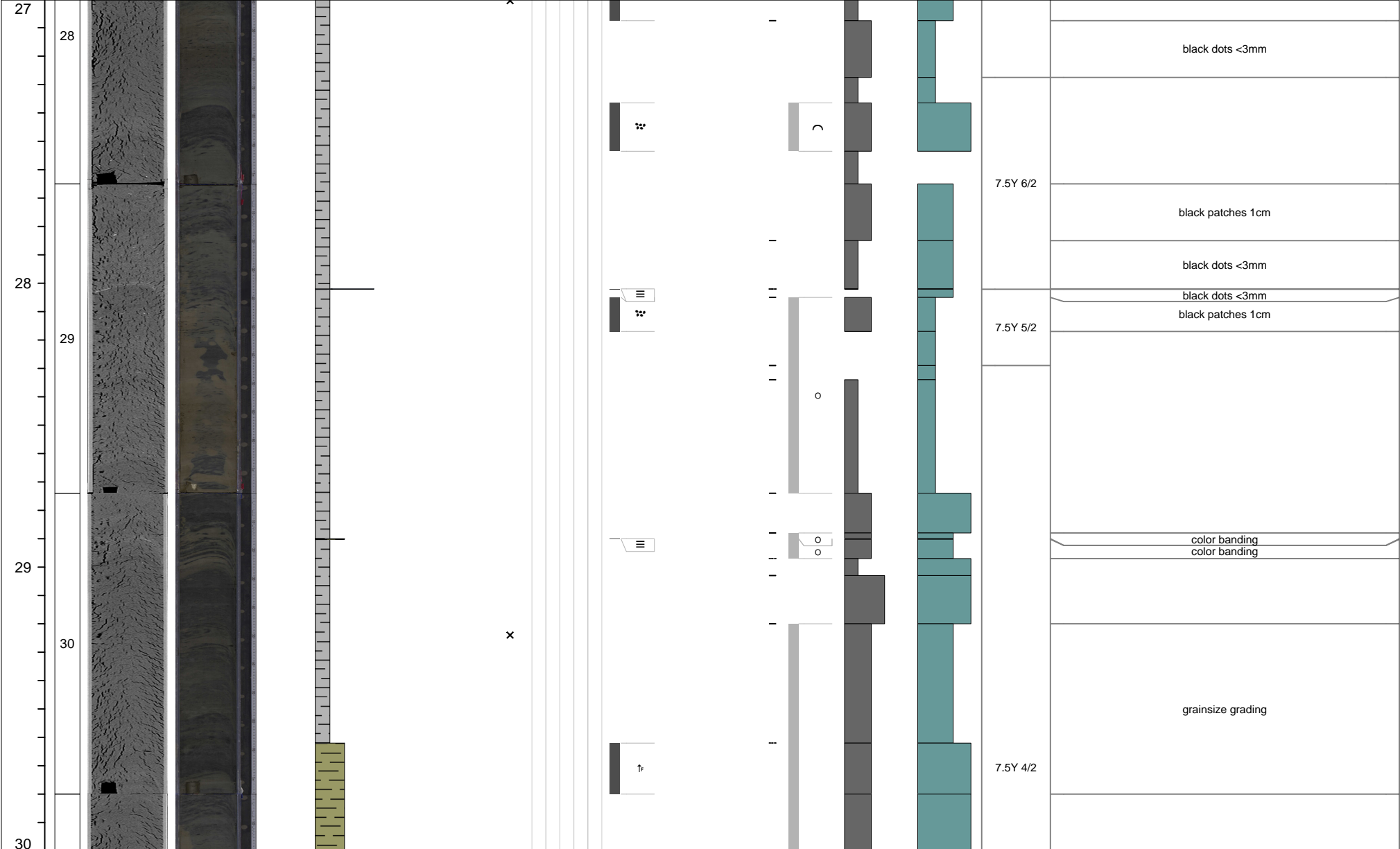
7.5Y 4/2

7.5Y 5/2

M0091D

10 of 11

Curated core depth (mbsf)	Core section	XCT image (stretched)	Linescan (stretched)	Void (V) or whole round (WR) interval	VCD grain size estimate							Tephra VCD observations	Close up photos (midpoint)	Smear slides	Sedimentary structures					Other sedimentary structures	Accessories	Top contact	Base contact	Coring disturbance	Bioturbation intensity					Iron monosulfide abundance			Color	Additional Observations
					Clay	Clayey silt / silty clay	Clay-silt-sand	Silt	Silty sand / sandy silt	Very fine sand	Fine sand				Medium sand	Parallel laminated	Wavy laminated	Convolute	Chaotic						Graded	1	2	3	4	5	0	1		



Curated core depth (mbsf)	Core section	XCT image (stretched)	Linescan (stretched)	Void (V) or whole round (WR) interval	VCD grain size estimate							Sedimentary structures				Accessories	Top contact	Base contact	Coring disturbance	Bioturbation intensity					Iron monosulfide abundance			Color	Additional Observations
					Clay	Clayey silt / silty clay	Clay-silt-sand	Silt	Silty sand / sandy silt	Very fine sand	Fine sand	Medium sand	Tephra VCD observations	Close up photos (midpoint)	Smear slides					Parallel laminated	Wavy laminated	Convolute	Chaotic	Graded	Other sedimentary structures	1	2		

M0091D

11 of 11

