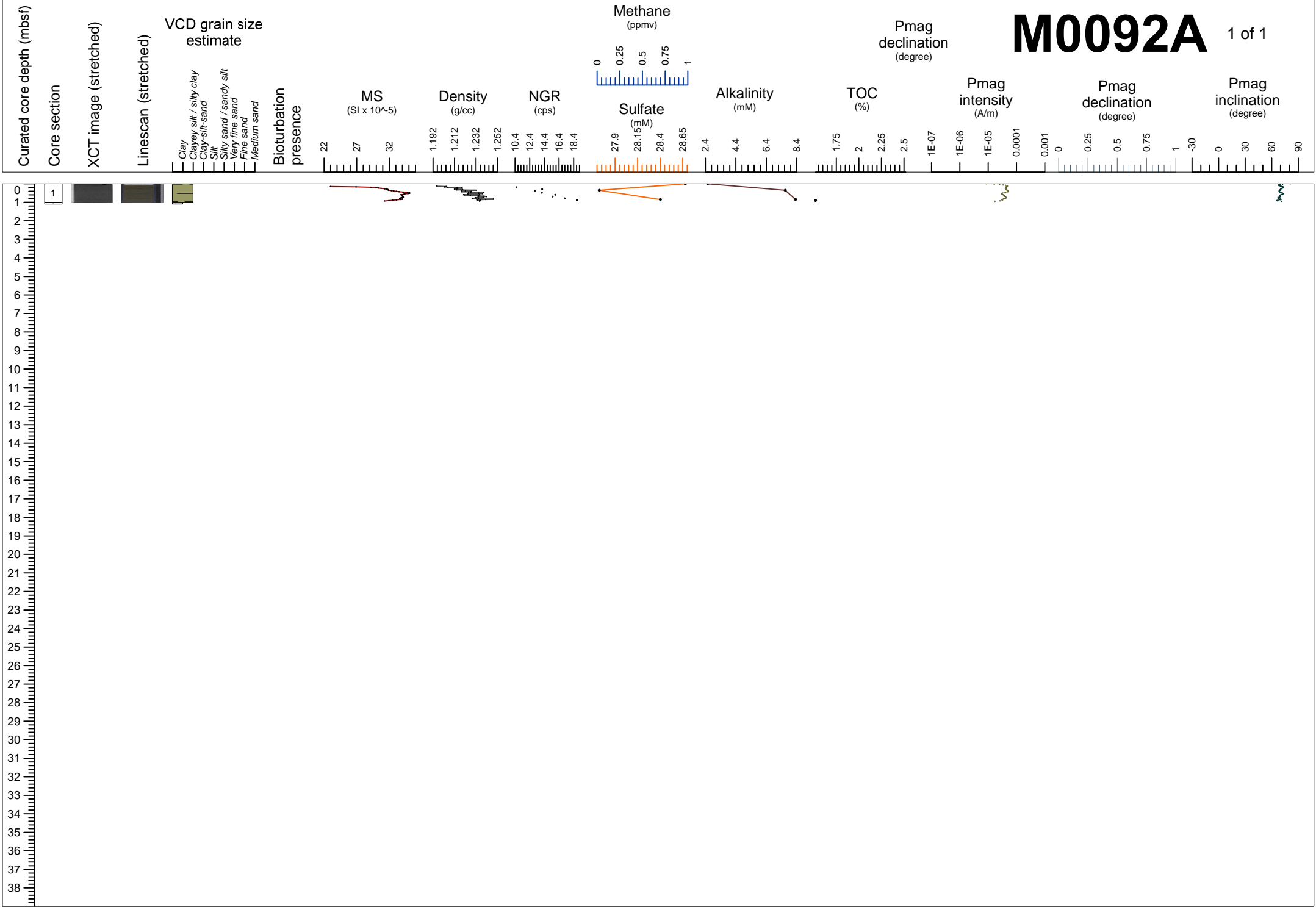
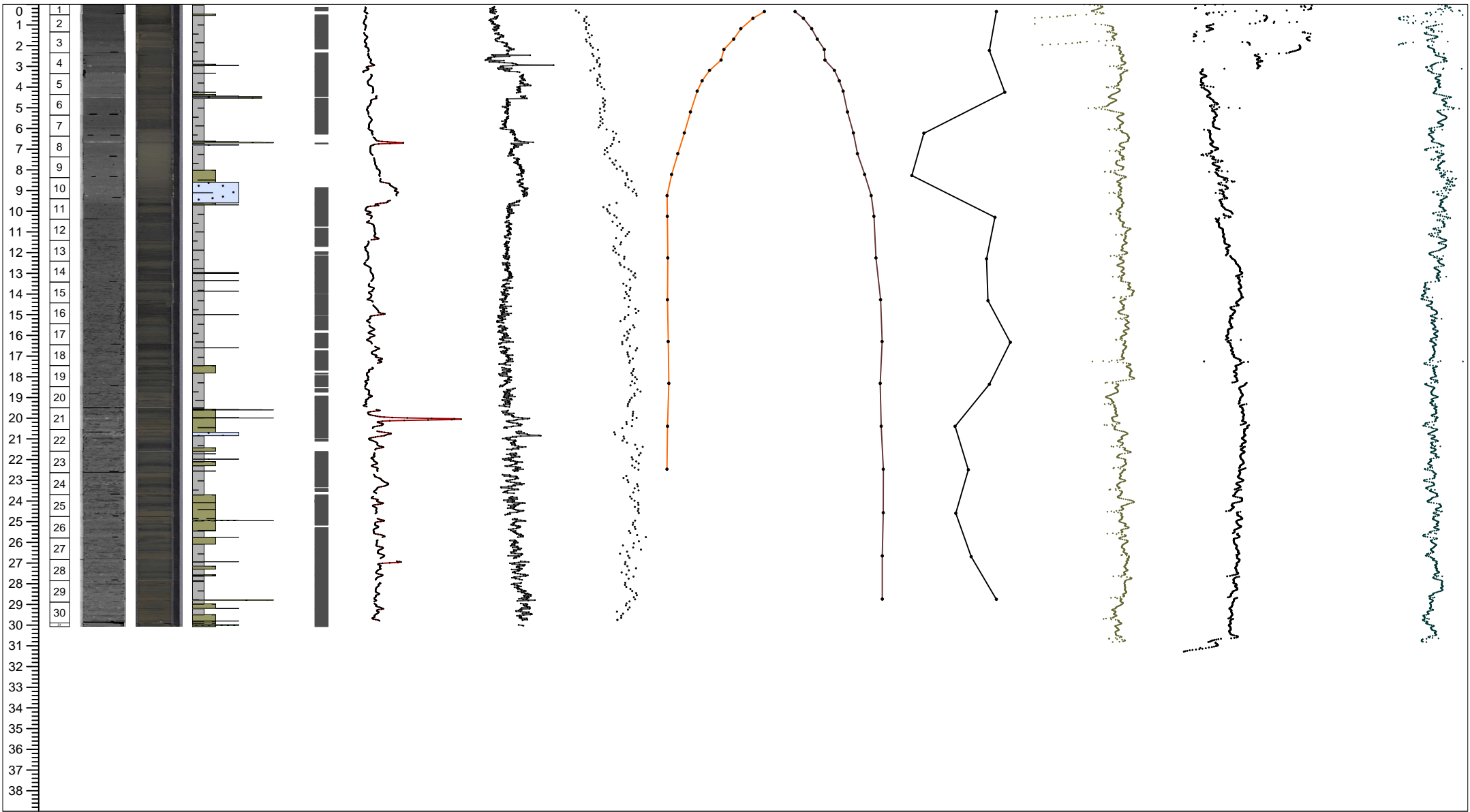
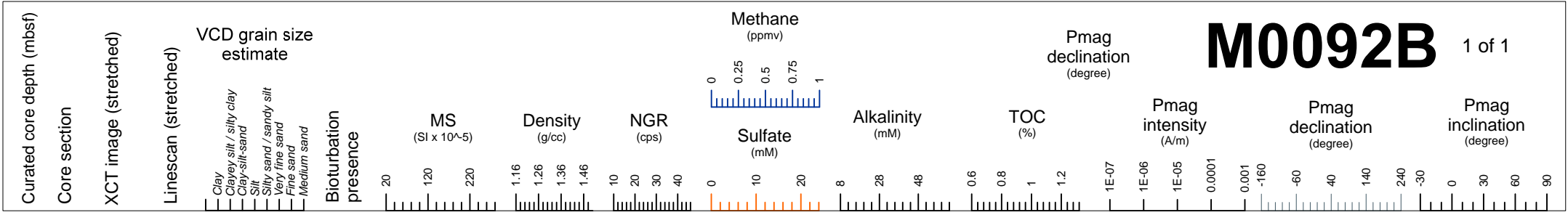


M0092A

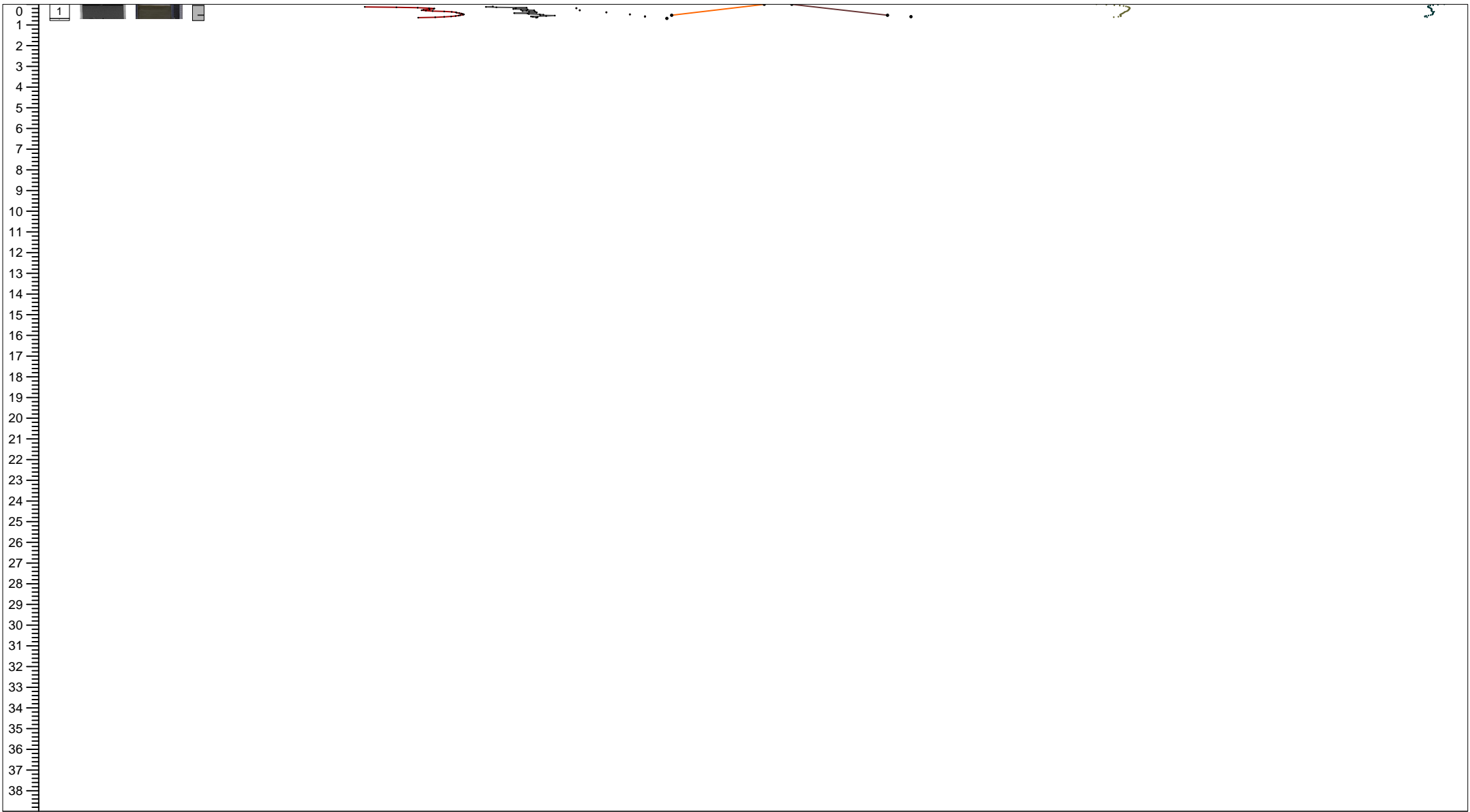
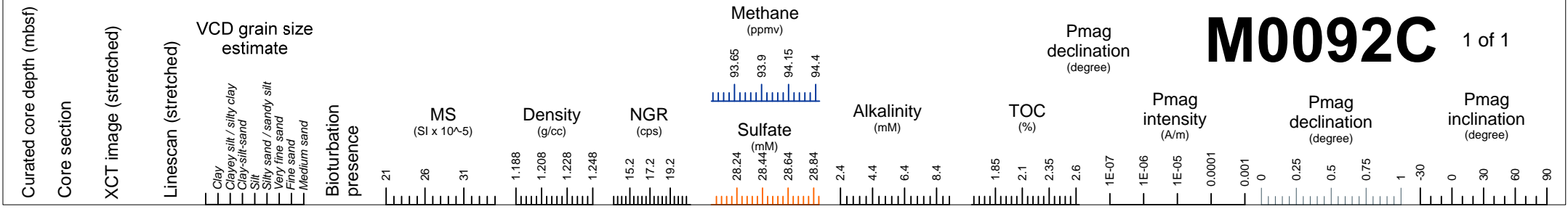
1 of 1



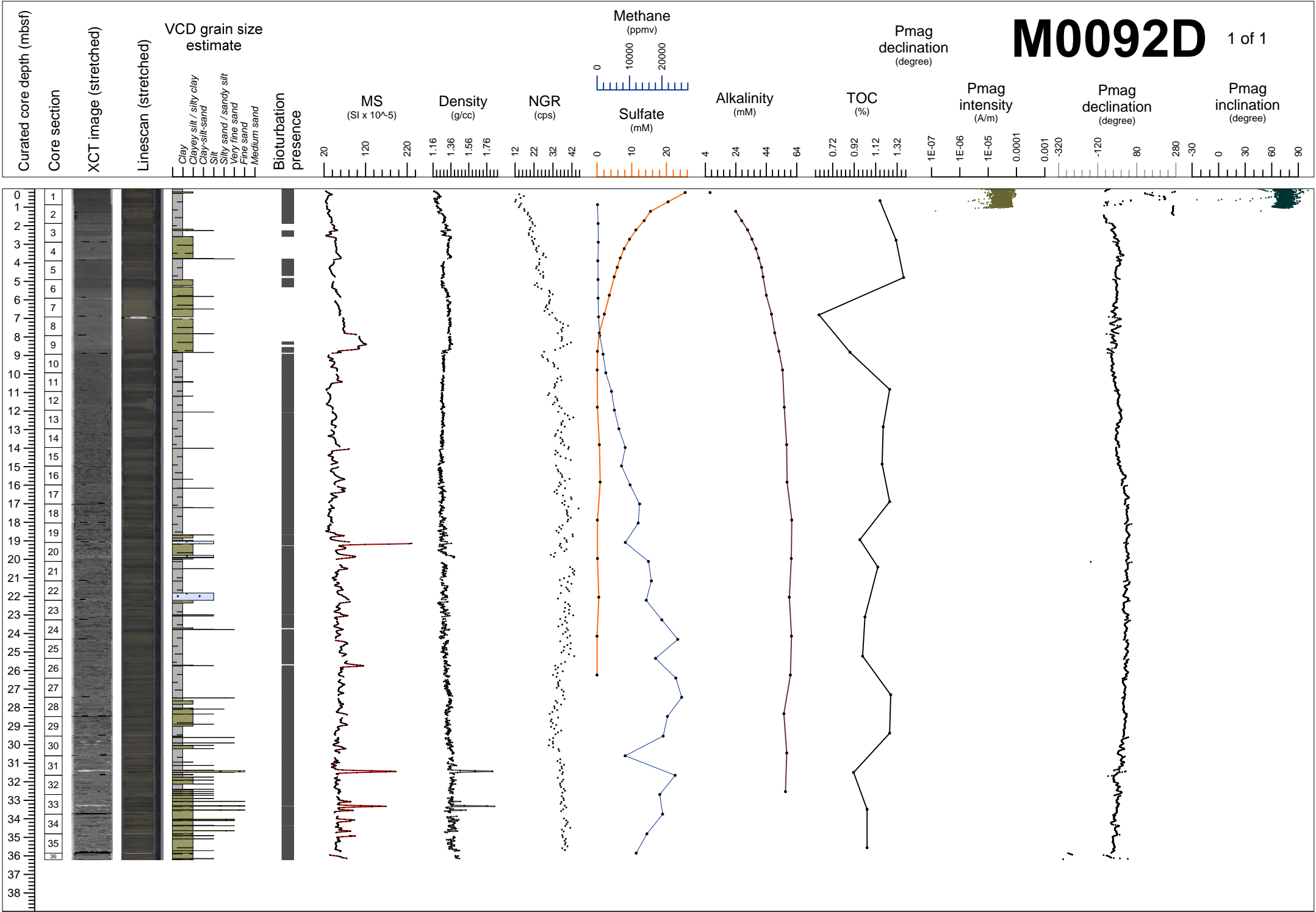
M0092B 1 of 1



M0092C 1 of 1



M0092D 1 of 1



M0092A

1 of 1

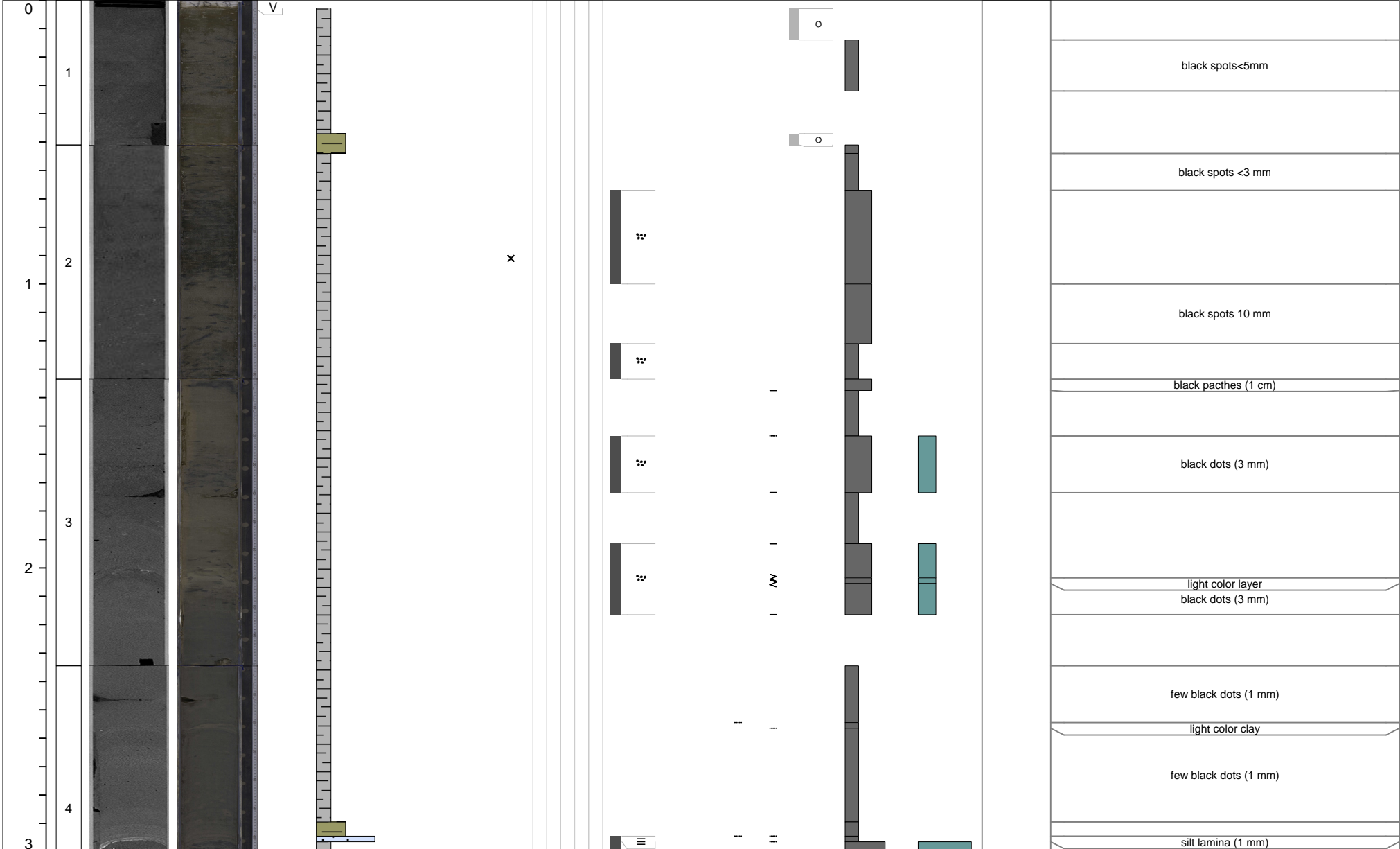
Curated core depth (mbsf)	Core section	XCT image (stretched)	Linescan (stretched)	Void (V) or whole round (WR) interval	VCD grain size estimate	Sedimentary structures	Accessories	Top contact	Base contact	Coring disturbance	Bioturbation intensity	Iron monosulfide abundance	Color	Additional Observations
					Clay Clayey silt / silty clay Clay-silt-sand Silt Silty sand / sandy silt Very fine sand Fine sand Medium sand	Parallel laminated Wavy laminated Convolute Chaotic Graded Other sedimentary structures					1 2 3 4 5 0 1 2 3			

0				V									7.5Y 4/2	top probably oxydized
1	1													
1	2													CC in bay

M0092B

1 of 11

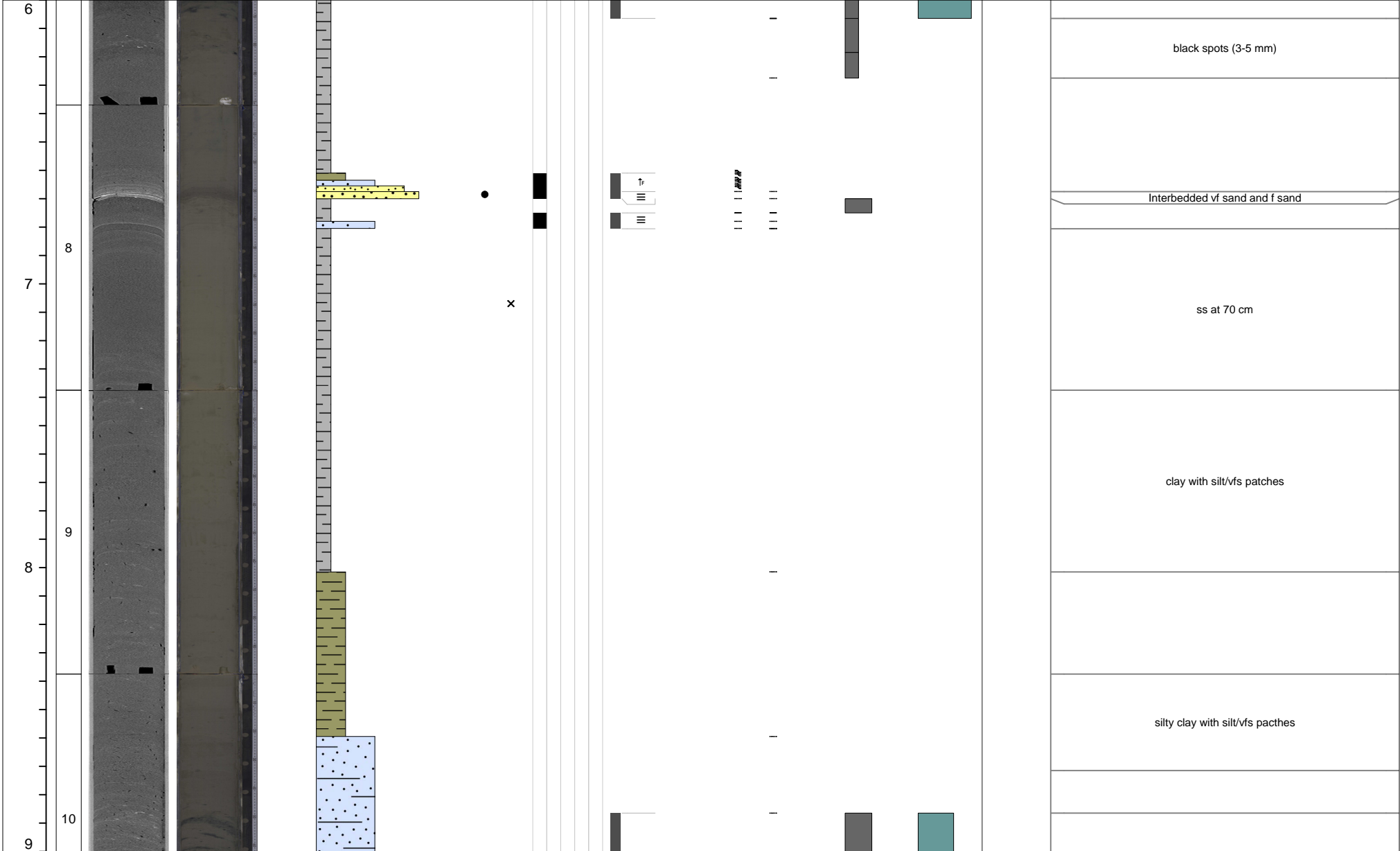
Curated core depth (mbsf)	Core section	XCT image (stretched)	Linescan (stretched)	Void (V) or whole round (WR) interval	VCD grain size estimate						Tephra VCD observations	Close up photos (midpoint)	Smear slides	Sedimentary structures				Accessories	Top contact	Base contact	Coring disturbance	Bioturbation intensity					Iron monosulfide abundance			Color	Additional Observations
					Clay	Clayey silt / silty clay	Clay-silt-sand	Silt	Silty sand / sandy silt	Very fine sand				Fine sand	Medium sand	Parallel laminated	Wavy laminated					Convolute	Chaotic	Graded	Other sedimentary structures	0	1	2	3		



M0092B

3 of 11

Curated core depth (mbsf)	Core section	XCT image (stretched)	Linescan (stretched)	Void (V) or whole round (WR) interval	VCD grain size estimate	Sedimentary structures	Accessories	Top contact	Base contact	Coring disturbance	Bioturbation intensity	Iron monosulfide abundance	Color	Additional Observations
					Clay Clayey silt / silty clay Clay-silt-sand Silt Silty sand / sandy silt Very fine sand Fine sand Medium sand	Parallel laminated Wavy laminated Convolute Chaotic Graded Other sedimentary structures					1 2 3 4 5	0 1 2 3		



M0092B

5 of 11

Curated core depth (mbsf)	Core section	XCT image (stretched)	Linescan (stretched)	Void (V) or whole round (WR) interval	VCD grain size estimate						Tephra VCD observations	Close up photos (midpoint)	Smear slides	Sedimentary structures					Other sedimentary structures	Accessories	Top contact	Base contact	Coring disturbance	Bioturbation intensity					Iron monosulfide abundance			Color	Additional Observations
					Clay	Clayey silt / silty clay	Clay-silt-sand	Silt	Silty sand / sandy silt	Very fine sand				Fine sand	Medium sand	Parallel laminated	Wavy laminated	Convolute						Chaotic	Graded	1	2	3	4	5	0		

12																														7.5Y 6/2	color band related to iron monosulfide color band related to iron monosulfide		
																														7.5Y 4/2			
																														x	black spots (5-10 mm)		
																															black smudges		
13																														7.5Y 4/2	black silt black spots (5-10 mm)		
																															black smudges		
																															Black spots (5-8 mm) Black smudges		
																															7.5Y 5/2	Black spots (5-8 mm)	
																															7.5Y 4/2	Black smudges	
14																															7.5Y 5/2	Black spots (5-8 mm)	
																																Black patches (2-5 cm)	
																																Black smudges	
																																7.5Y 4/2	Black smudges
15																																	

M0092B

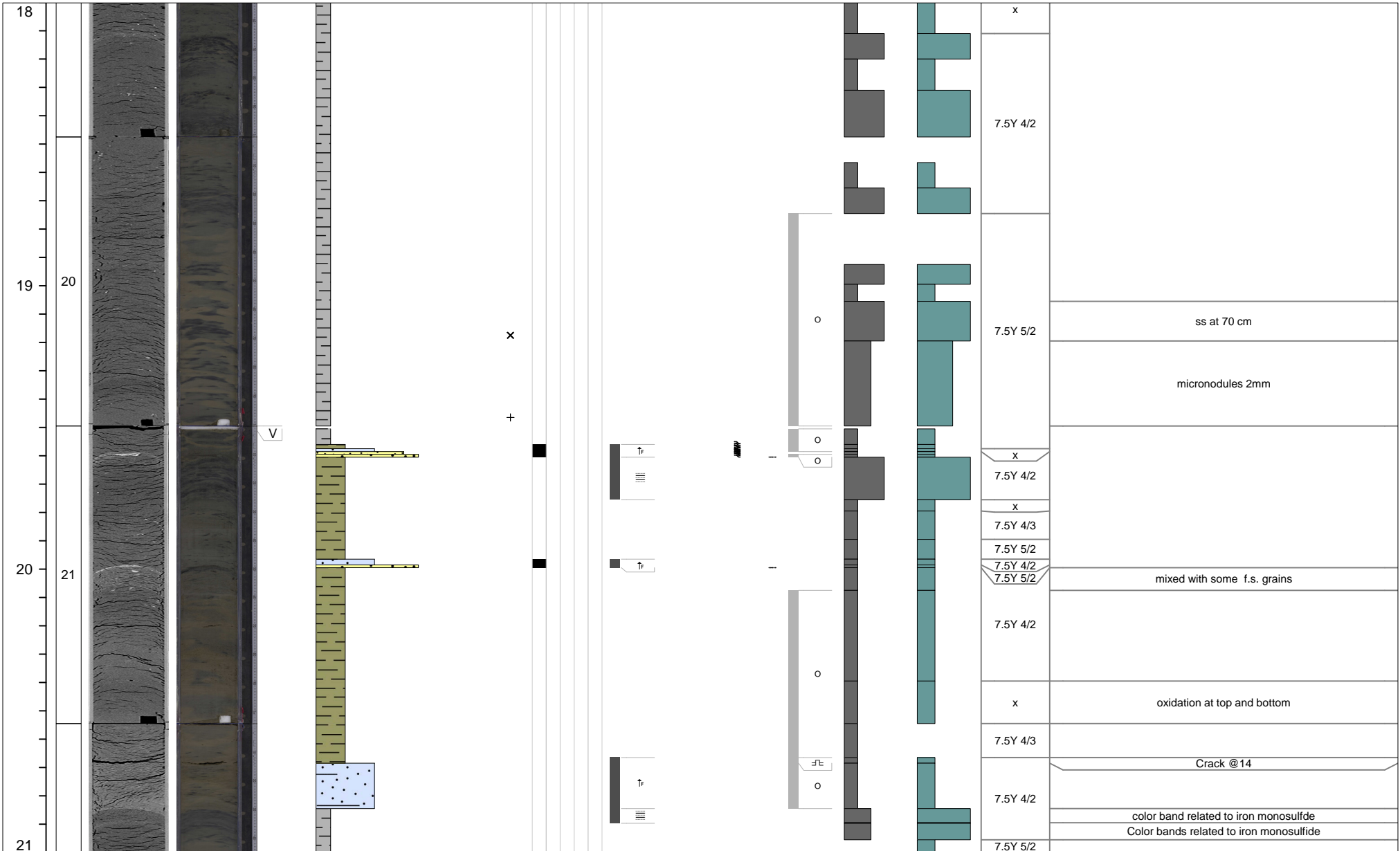
6 of 11

Curated core depth (mbsf)	Core section	XCT image (stretched)	Linescan (stretched)	Void (V) or whole round (WR) interval	VCD grain size estimate						Tephra VCD observations	Close up photos (midpoint)	Smear slides	Sedimentary structures					Accessories	Top contact	Base contact	Coring disturbance	Bioturbation intensity					Iron monosulfide abundance			Color	Additional Observations
					Clay	Clayey silt / silty clay	Clay-silt-sand	Silt	Silty sand / sandy silt	Very fine sand				Fine sand	Medium sand	Parallel laminated	Wavy laminated	Convolute					Chaotic	Graded	Other sedimentary structures	1	2	3	4	5		
15																																
16																															Black smudges	
17																															Black spots (5-10 mm) with nodules (2 mm)	
18																																
18																															ss at 70 cm	

M0092B

7 of 11

Additional Observations



M0092B

8 of 11

Curated core depth (mbsf)	Core section	XCT image (stretched)	Linescan (stretched)	Void (V) or whole round (WR) interval	VCD grain size estimate						Tephra VCD observations	Close up photos (midpoint)	Smear slides	Sedimentary structures				Accessories	Top contact	Base contact	Coring disturbance	Bioturbation intensity					Iron monosulfide abundance			Color	Additional Observations
					Clay	Clayey silt / silty clay	Clay-silt-sand	Silt	Silty sand / sandy silt	Very fine sand				Fine sand	Medium sand	Parallel laminated	Wavy laminated					Convolute	Chaotic	Graded	Other sedimentary structures	1	2	3	4		

21	22			V																									7.5Y 4/2	
																													7.5Y 5/2	SS @70
																												7.5Y 4/2	oxidation at top and bottom	
																												7.5Y 4/3	black spots 1 cm black spots 5 mm patchy silty clay	
																												7.5Y 4/2	black spots 5 mm	
	22																											7.5Y 5/2	patchy silt black spots 5 mm includes black grains	
	23																											7.5Y 4/2	disturbed black 7.5Y 2/2 horizontal structures (burrows or laminae) black dots 1 mm	
																												7.5Y 4/2	black dots 1 mm includes small black ?grains?	
																												7.5Y 5/2	black patches 1 cm, not full 100-103.5 in part sampled? gradational bioturbation	
	23																											7.5Y 4/2	black dots 1mm	
	24																											7.5Y 4/2	Large black patches and a 2cm large blackish burrow	
																														gradational bioturbation
																														black spots 1cm
																												7.5YR 4/2	black spots 5 mm	
																												7.5Y 4/2	gradational bioturbation	
	24																											7.5Y 5/2		

M0092B

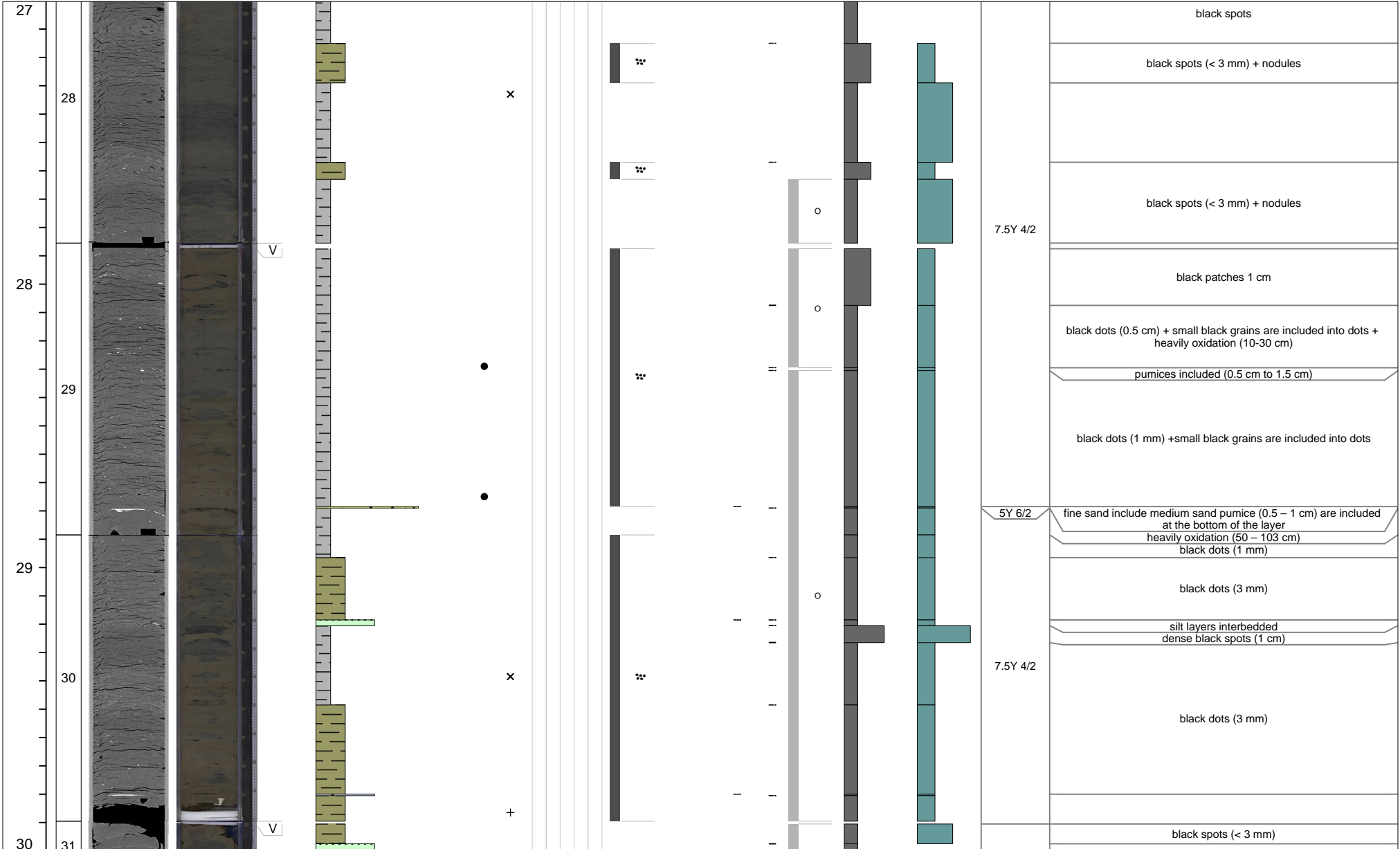
9 of 11

Curated core depth (mbsf)	Core section	XCT image (stretched)	Linescan (stretched)	Void (V) or whole round (WR) interval	VCD grain size estimate							Tephra VCD observations	Close up photos (midpoint)	Smear slides	Sedimentary structures				Accessories	Top contact	Base contact	Coring disturbance	Bioturbation intensity					Iron monosulfide abundance			Color	Additional Observations
					Clay	Clayey silt / silty clay	Clay-silt-sand	Silt	Silty sand / sandy silt	Very fine sand	Fine sand				Medium sand	0	1	2					3	0	1	2	3					
24																										7.5Y 5/2	2mm thick silt laminae alternate with silty clay gradational color					
25																										7.5Y 5/2						
25																										7.5Y 4/2	four silts interbedded with silty clay					
26																										7.5Y 5/2	black spots (< 3mm)					
26																										x	silt lamina					
26																										7.5Y 5/2	black spots < 3 mm					
27																											black spots < 3 mm					
27																											black spots (<3 mm)					
27																											black spots (<3 mm)					
27																											silt lamina					

M0092B

10 of 11

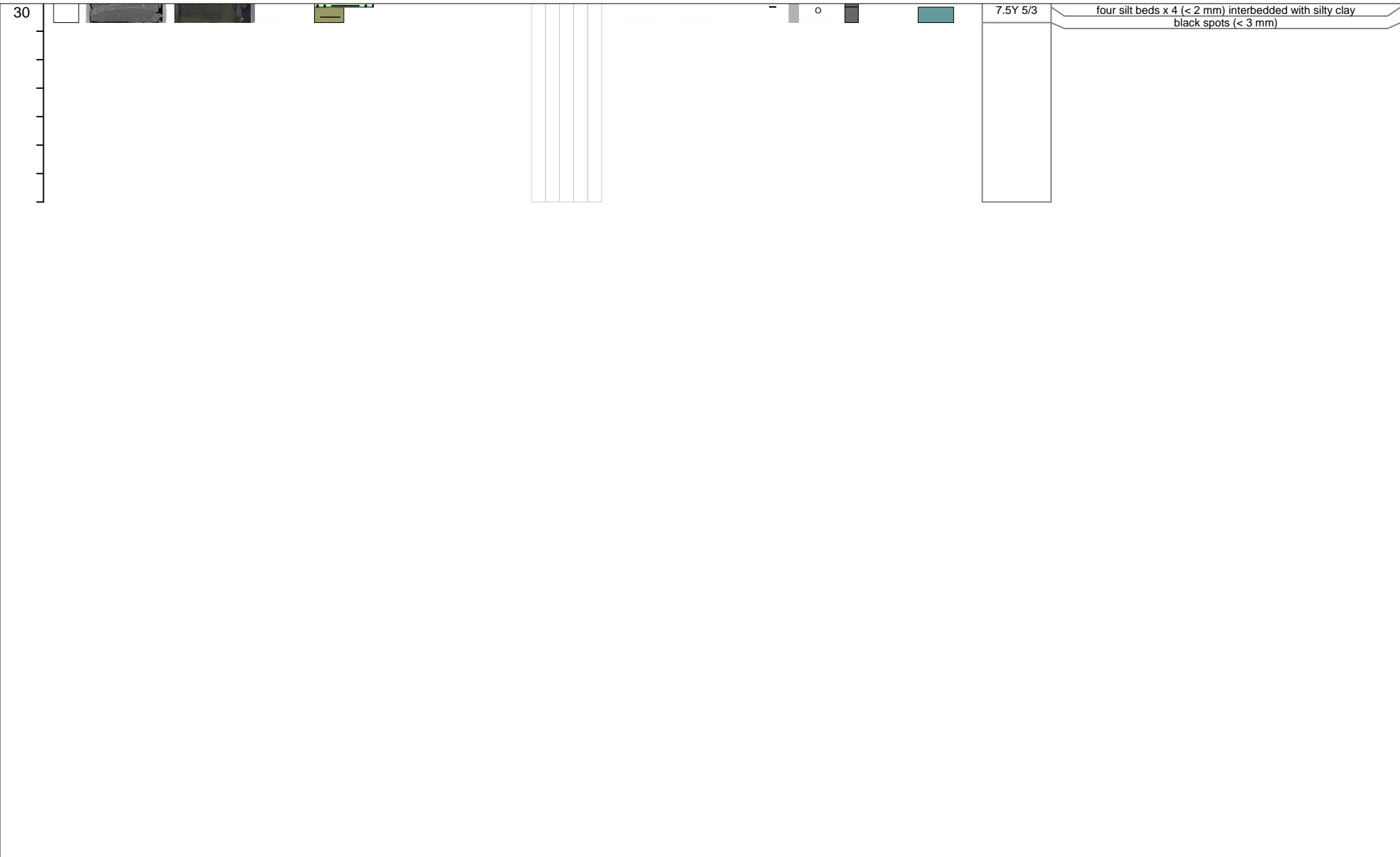
Curated core depth (mbsf)	Core section	XCT image (stretched)	Linescan (stretched)	Void (V) or whole round (WR) interval	VCD grain size estimate						Tephra VCD observations	Close up photos (midpoint)	Smear slides	Sedimentary structures					Accessories	Top contact	Base contact	Coring disturbance	Bioturbation intensity					Iron monosulfide abundance			Color	Additional Observations
					Clay	Clayey silt / silty clay	Clay-silt-sand	Silt	Silty sand / sandy silt	Very fine sand				Fine sand	Medium sand	Parallel laminated	Wavy laminated	Convolute					Chaotic	Graded	Other sedimentary structures	1	2	3	4	5		



M0092B

11 of 11

Curated core depth (mbsf)	Core section	XCT image (stretched)	Linescan (stretched)	Void (V) or whole round (WR) interval	VCD grain size estimate	Sedimentary structures	Accessories	Top contact	Base contact	Coring disturbance	Bioturbation intensity	Iron monosulfide abundance	Color	Additional Observations
					Clay Clayey silt / silty clay Clay-silt-sand Silt Silty sand / sandy silt Very fine sand Fine sand Medium sand	Parallel laminated Wavy laminated Convolute Chaotic Graded Other sedimentary structures					1 2 3 4 5 0 1 2 3			



M0092C

1 of 1

Curated core depth (mbsf)	Core section	XCT image (stretched)	Linescan (stretched)	Void (V) or whole round (WR) interval	VCD grain size estimate	Sedimentary structures	Accessories	Top contact	Base contact	Coring disturbance	Bioturbation intensity	Iron monosulfide abundance	Color	Additional Observations
					Clay Clayey silt / silty clay Clay-silt-sand Silt Silty sand / sandy silt Very fine sand Fine sand Medium sand	Parallel laminated Wavy laminated Convolute Chaotic Graded Other sedimentary structures					1 2 3 4 5 0 1 2 3			

0				V									7.5Y 5/3	surface oxidation
1													7.5Y 4/2	
2														CC in bag

M0092D

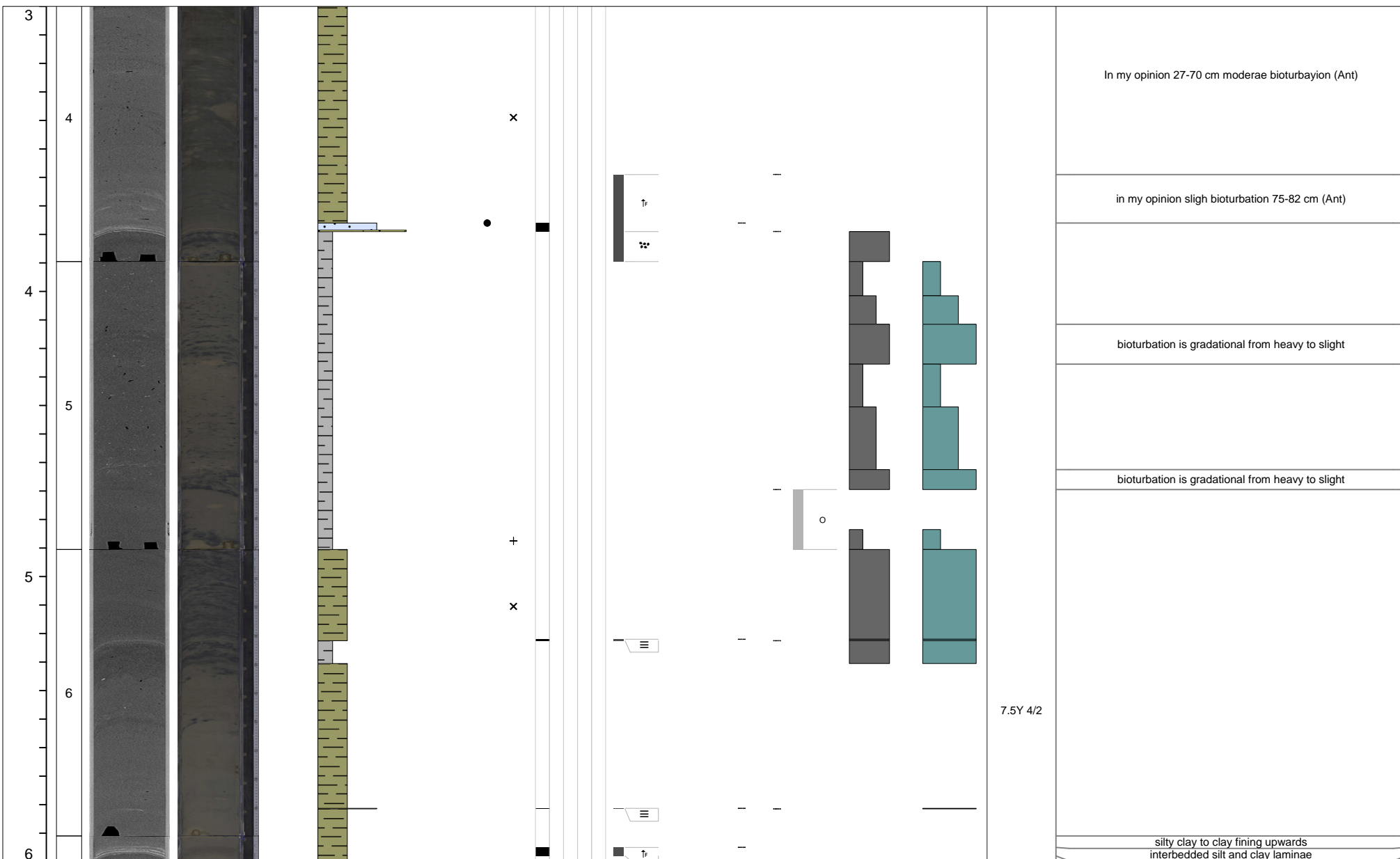
1 of 13

Curated core depth (mbsf)	Core section	XCT image (stretched)	Linescan (stretched)	Void (V) or whole round (WR) interval	VCD grain size estimate						Tephra VCD observations	Close up photos (midpoint)	Smear slides	Sedimentary structures				Accessories	Top contact	Base contact	Coring disturbance	Bioturbation intensity					Iron monosulfide abundance			Color	Additional Observations
					Clay	Clayey silt / silty clay	Clay-silt-sand	Silt	Silty sand / sandy silt	Very fine sand				Fine sand	Medium sand	Parallel laminated	Wavy laminated					Convolute	Chaotic	Graded	Other sedimentary structures	1	2	3	4		
0																												heavy oxidation patch 7.5Y 3/3			
1																												black spots < 5 mm			
1																												black spots < 3 mm			
2																												black spots < 1 mm			
2																												black spots < 3 mm			
2																												black spots < 1 mm. bioturbation very slight			
3																												silt interbedded with silty clay black spots < 3 mm			
3																												silty clay to clay			

M0092D

2 of 13

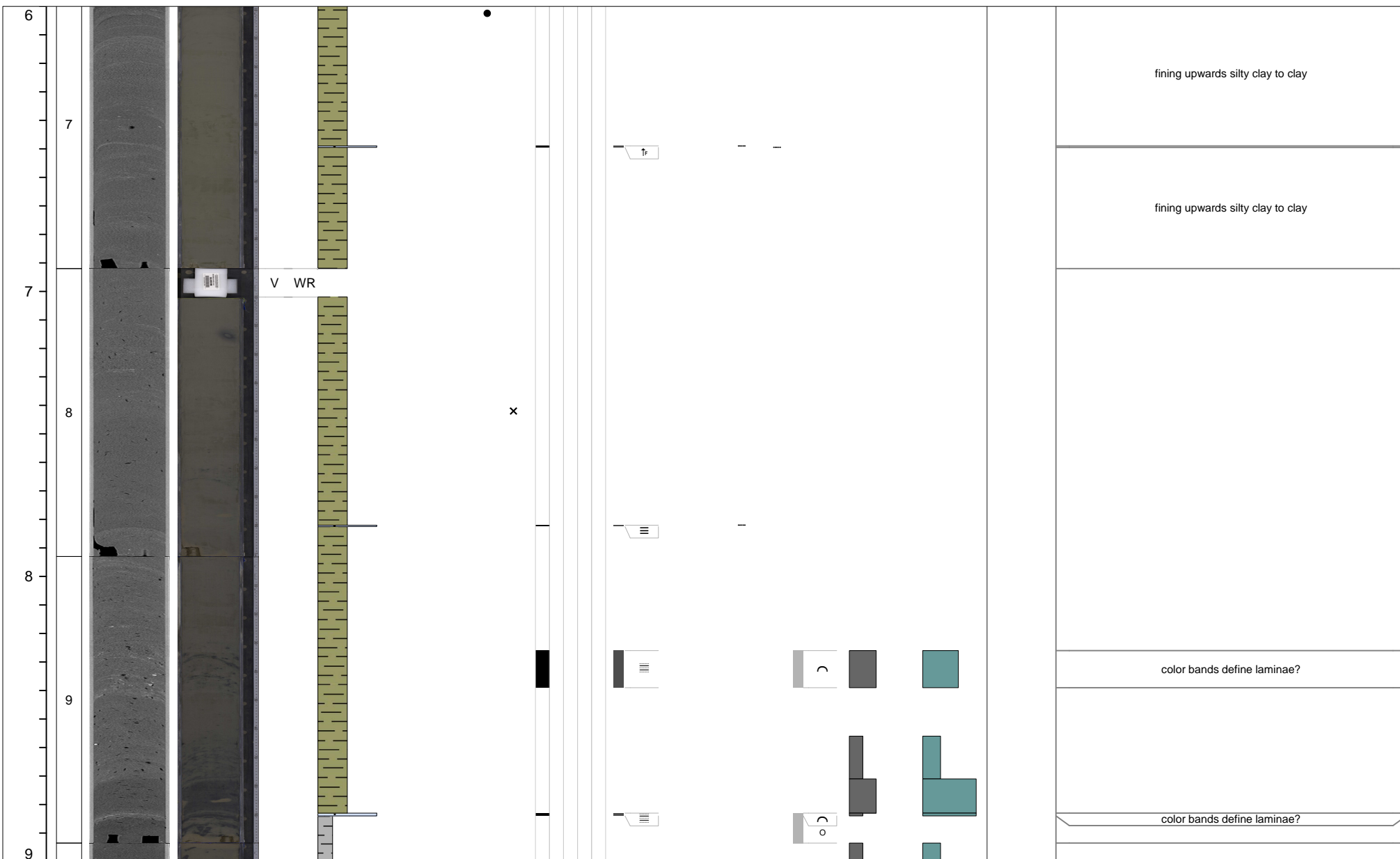
Curated core depth (mbsf)	Core section	XCT image (stretched)	Linescan (stretched)	Void (V) or whole round (WR) interval	VCD grain size estimate						Tephra VCD observations	Close up photos (midpoint)	Smear slides	Sedimentary structures				Accessories	Top contact	Base contact	Coring disturbance	Bioturbation intensity					Iron monosulfide abundance			Color	Additional Observations
					Clay	Clayey silt / silty clay	Clay-silt-sand	Silt	Silty sand / sandy silt	Very fine sand				Fine sand	Medium sand	Parallel laminated	Wavy laminated					Convolute	Chaotic	Graded	Other sedimentary structures	1	2	3	4		



M0092D

3 of 13

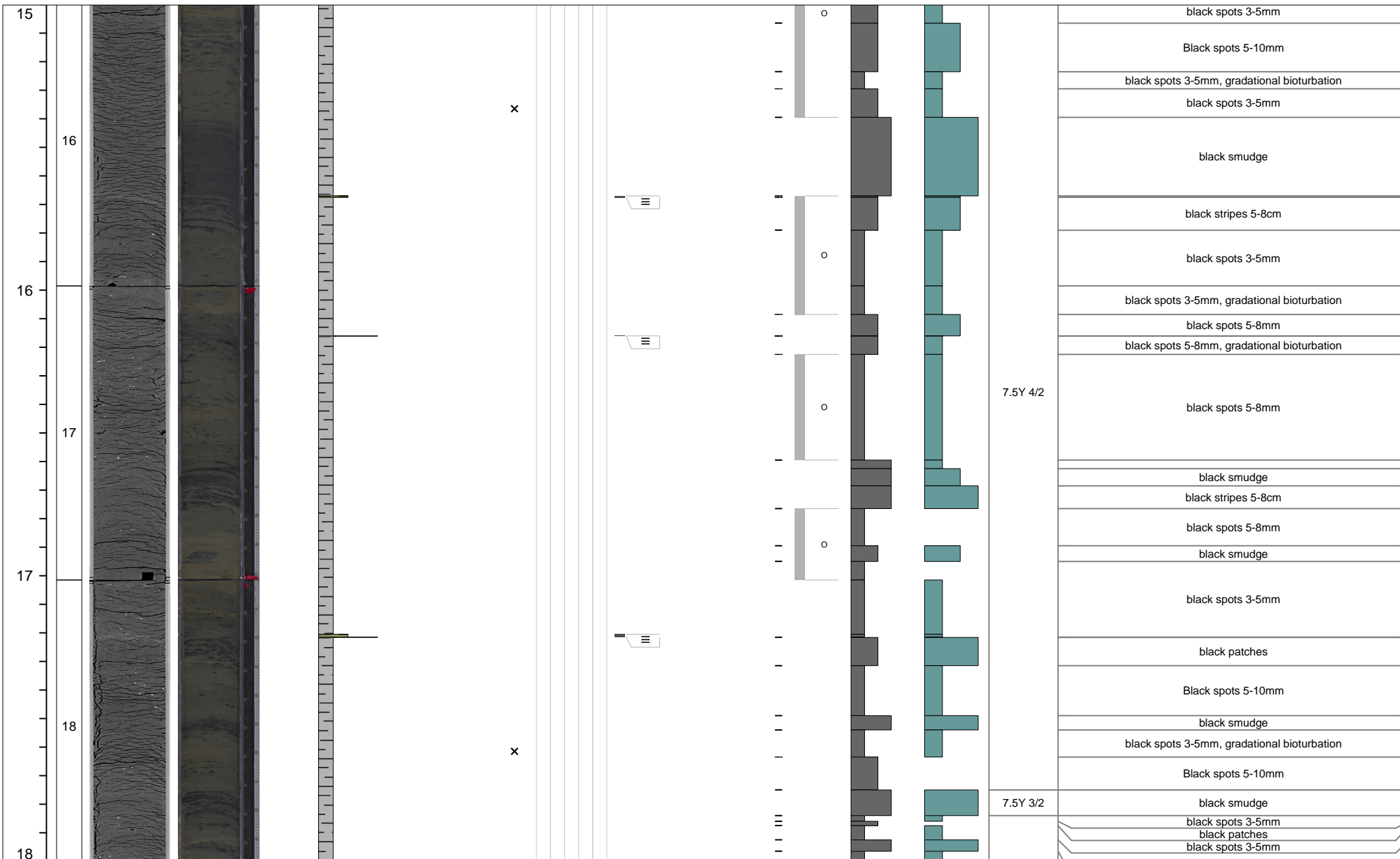
Curated core depth (mbsf)	Core section	XCT image (stretched)	Linescan (stretched)	Void (V) or whole round (WR) interval	VCD grain size estimate							Tephra VCD observations	Close up photos (midpoint)	Smear slides	Sedimentary structures				Accessories	Top contact	Base contact	Coring disturbance	Bioturbation intensity					Iron monosulfide abundance			Color	Additional Observations
					Clay	Clayey silt / silty clay	Clay-silt-sand	Silt	Silty sand / sandy silt	Very fine sand	Fine sand				Medium sand	1	2	3					4	5	0	1	2	3				



M0092D

6 of 13

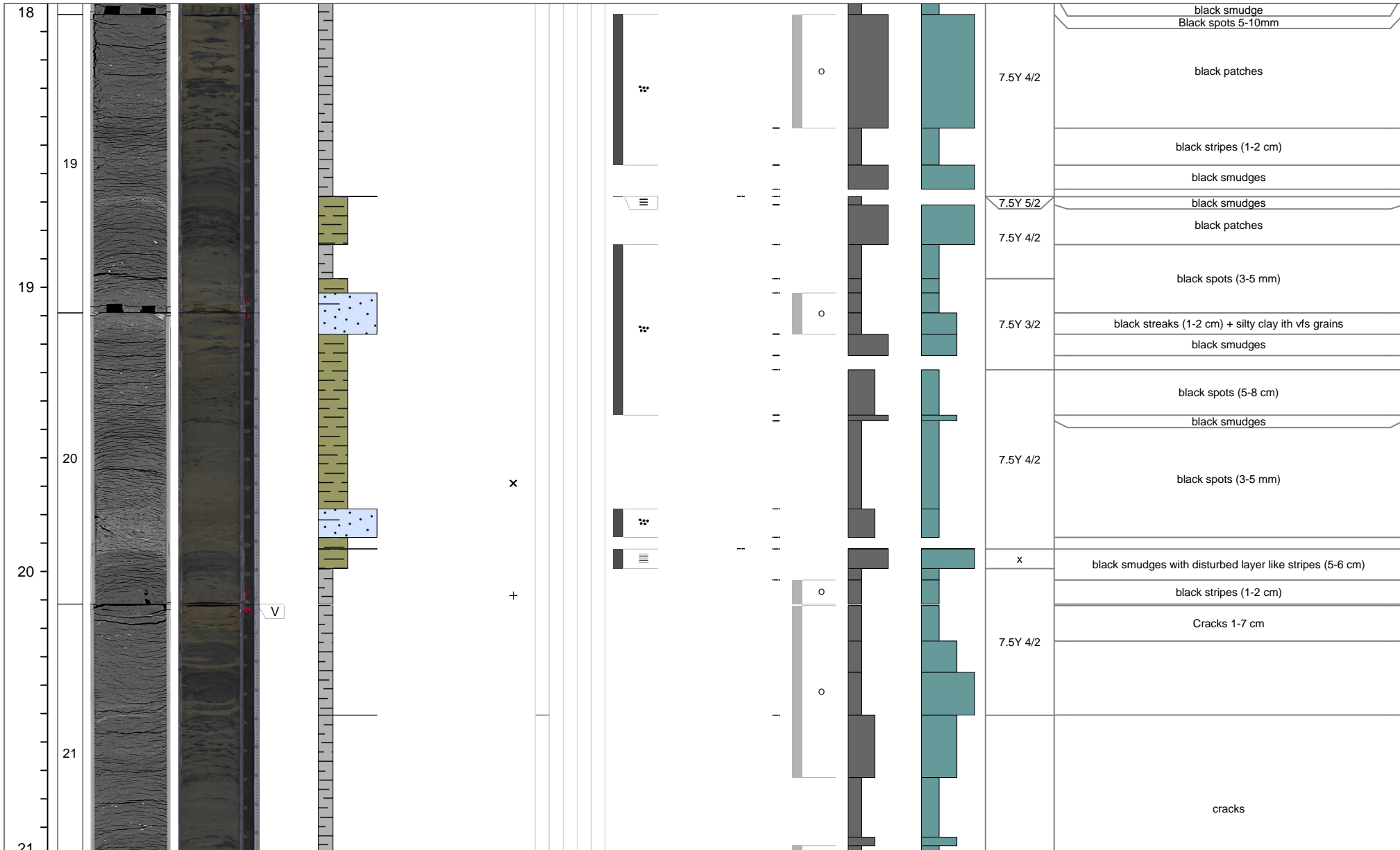
Curated core depth (mbsf)	Core section	XCT image (stretched)	Linescan (stretched)	Void (V) or whole round (WR) interval	VCD grain size estimate							Tephra VCD observations	Close up photos (midpoint)	Smear slides	Sedimentary structures				Accessories	Top contact	Base contact	Coring disturbance	Bioturbation intensity					Iron monosulfide abundance			Color	Additional Observations
					Clay	Clayey silt / silty clay	Clay-silt-sand	Silt	Silty sand / sandy silt	Very fine sand	Fine sand				Medium sand	Parallel laminated	Wavy laminated	Convolute					Chaotic	Graded	Other sedimentary structures	1	2	3	4	5		



M0092D

7 of 13

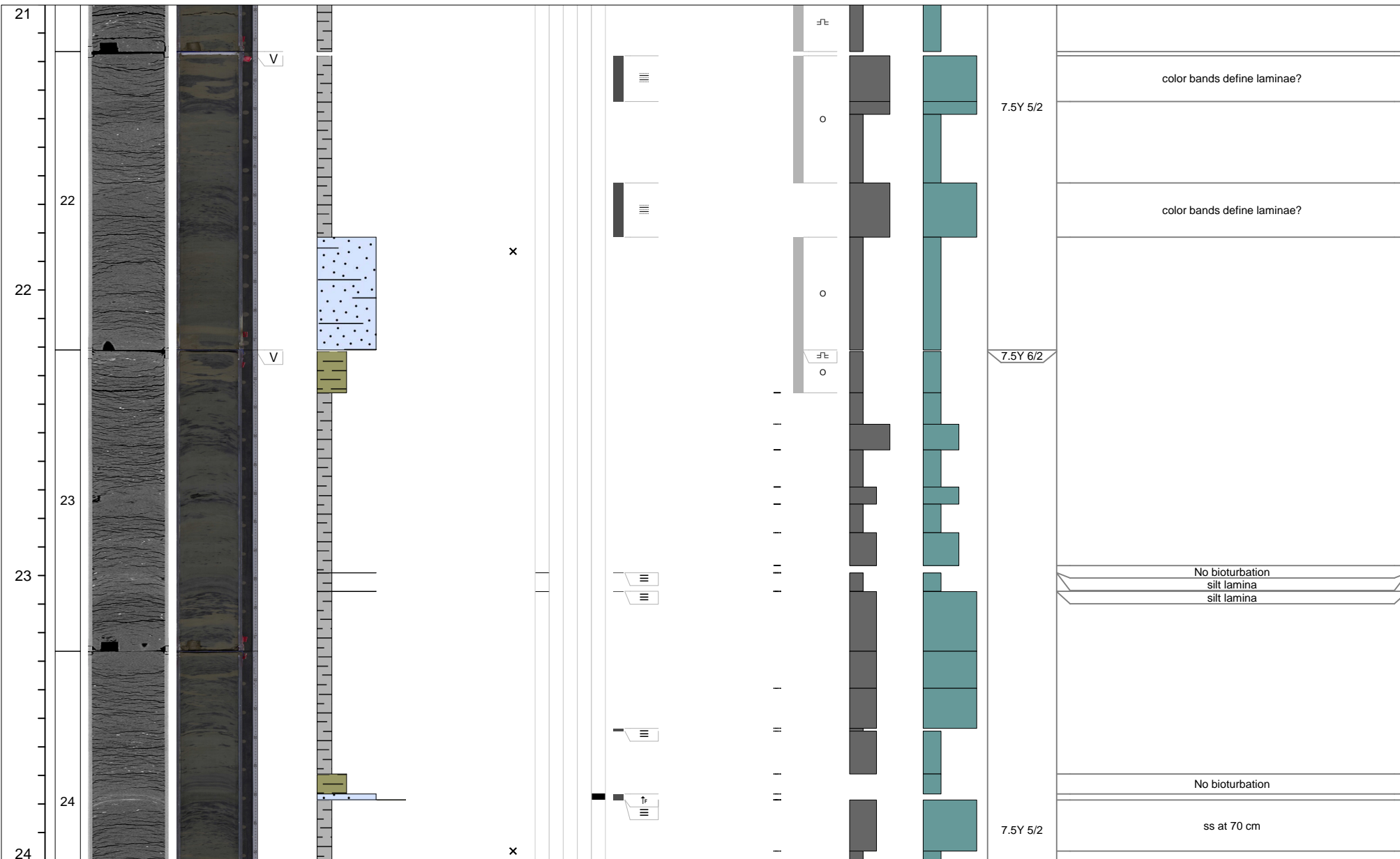
Curated core depth (mbsf)	Core section	XCT image (stretched)	Linescan (stretched)	Void (V) or whole round (WR) interval	VCD grain size estimate						Tephra VCD observations	Close up photos (midpoint)	Smear slides	Sedimentary structures				Accessories	Top contact	Base contact	Coring disturbance	Bioturbation intensity					Iron monosulfide abundance			Color	Additional Observations
					Clay	Clayey silt / silty clay	Clay-silt-sand	Silt	Silty sand / sandy silt	Very fine sand				Fine sand	Medium sand	Parallel laminated	Wavy laminated					Convolute	Chaotic	Graded	Other sedimentary structures	1	2	3	4		



M0092D

8 of 13

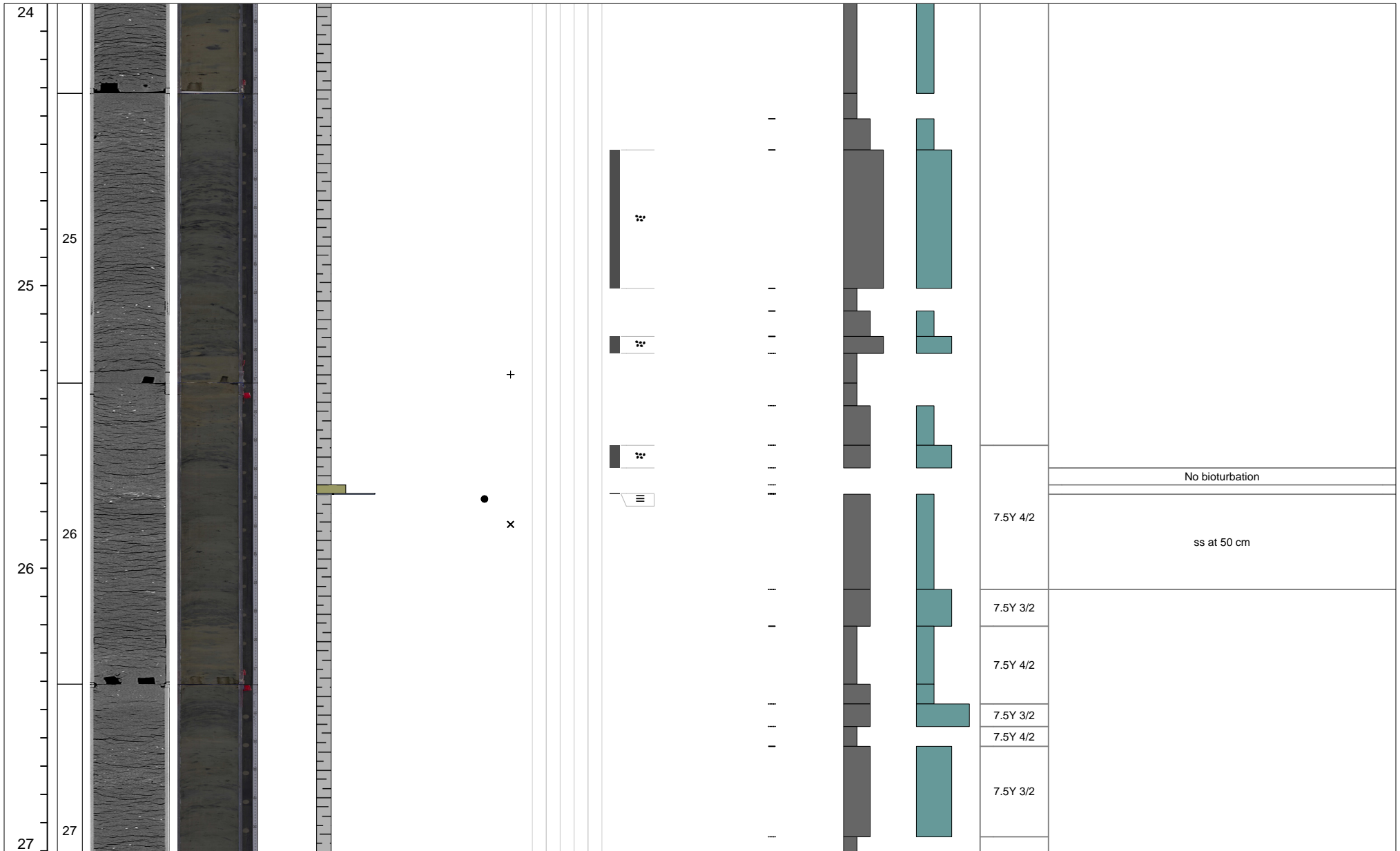
Curated core depth (mbsf)	Core section	XCT image (stretched)	Linescan (stretched)	Void (V) or whole round (WR) interval	VCD grain size estimate							Tephra VCD observations	Close up photos (midpoint)	Smear slides	Sedimentary structures						Accessories	Top contact	Base contact	Coring disturbance	Bioturbation intensity					Iron monosulfide abundance			Color	Additional Observations
					Clay	Clayey silt / silty clay	Clay-silt-sand	Silt	Silty sand / sandy silt	Very fine sand	Fine sand				Medium sand	Parallel laminated	Wavy laminated	Convolute	Chaotic	Graded					Other sedimentary structures	1	2	3	4	5	0	1		



M0092D

9 of 13

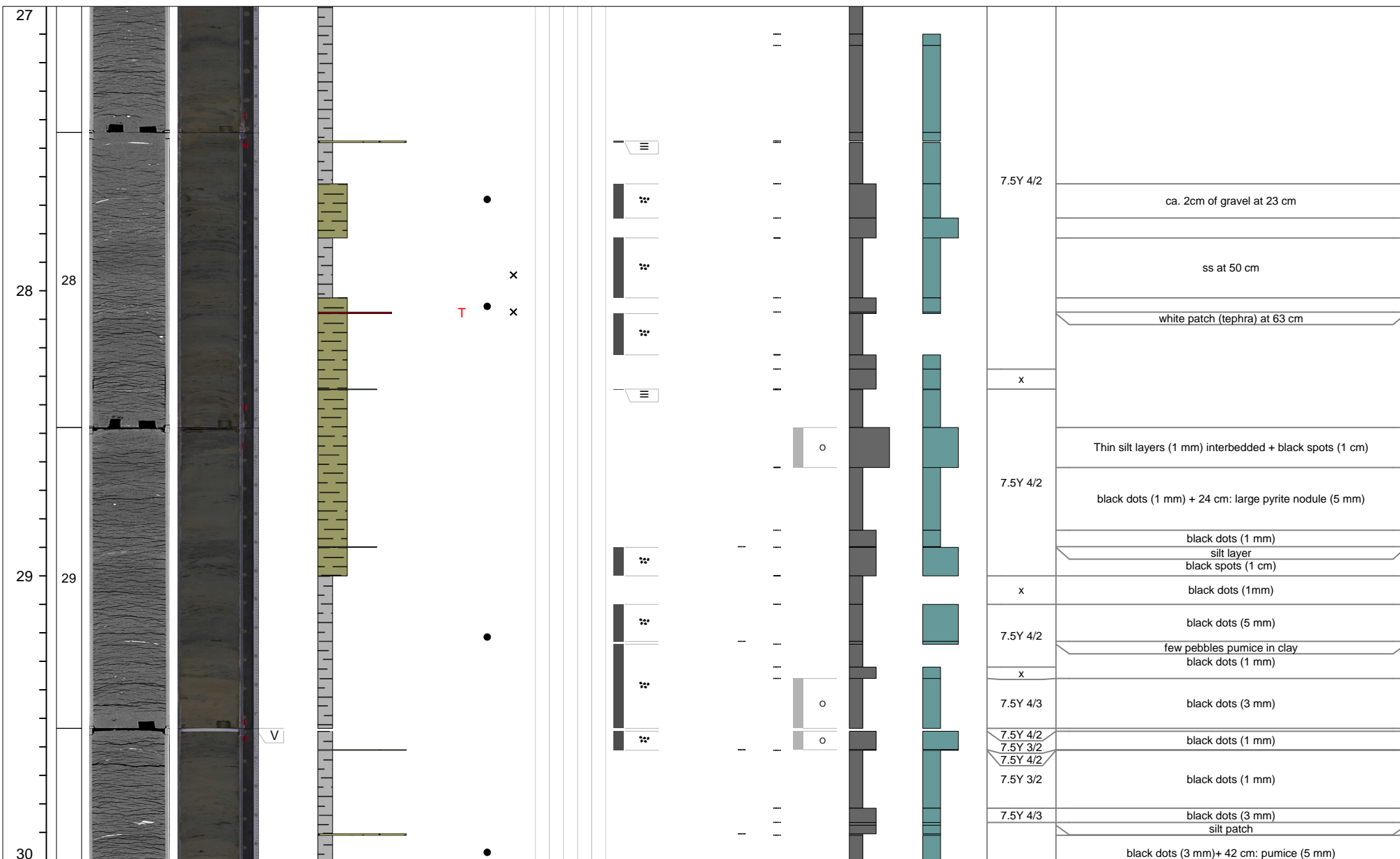
Additional Observations



M0092D

10 of 13

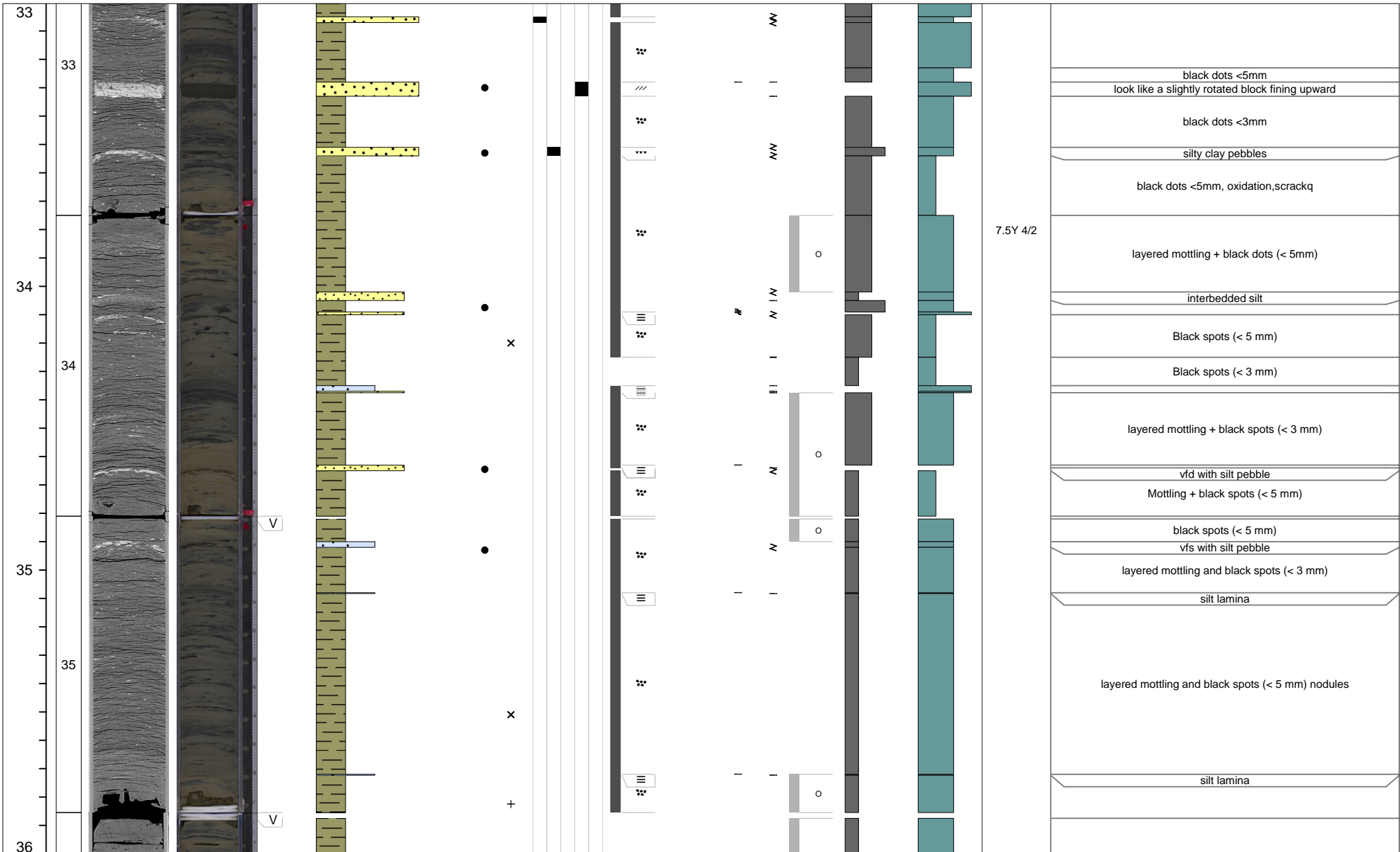
Curated core depth (mbsf)	Core section	XCT image (stretched)	Linescan (stretched)	Void (V) or whole round (WR) interval	VCD grain size estimate						Tephra VCD observations	Close up photos (midpoint)	Smear slides	Sedimentary structures				Accessories	Top contact	Base contact	Coring disturbance	Bioturbation intensity					Iron monosulfide abundance			Color	Additional Observations
					Clay	Clayey silt / silty clay	Clay-silt-sand	Silt	Silty sand / sandy silt	Very fine sand				Fine sand	Medium sand	Parallel laminated	Wavy laminated					Convolute	Chaotic	Graded	Other sedimentary structures	1	2	3	4		



M0092D

12 of 13

Additional Observations



M0092D

13 of 13

Curated core depth (mbsf)	Core section	XCT image (stretched)	Linescan (stretched)	Void (V) or whole round (WR) interval	VCD grain size estimate	Sedimentary structures	Accessories	Top contact	Base contact	Coring disturbance	Bioturbation intensity	Iron monosulfide abundance	Color	Additional Observations
					Clay Clayey silt / silty clay Clay-silt-sand Silt Silty sand / sandy silt Very fine sand Fine sand Medium sand	Parallel laminated Wavy laminated Convolute Chaotic Graded Other sedimentary structures					1 2 3 4 5 0 1 2 3			

