

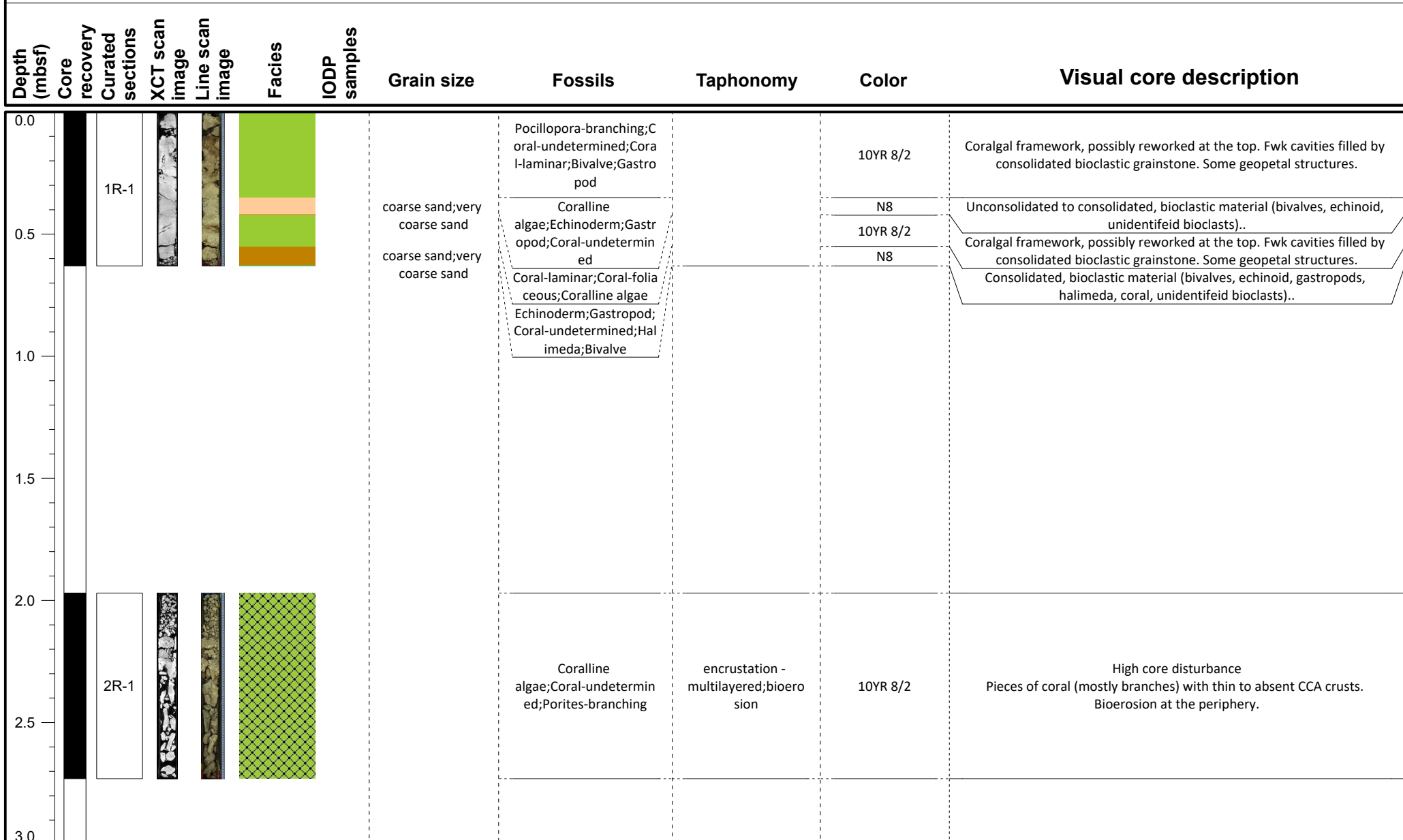
IODP Expedition 389 VCD

Site: M0098A

Hole M0098A

Region: Mahukona

Water Depth: 1100.1 m



VCD legend

Core recovery

- Core recovered
- No recovery
- Wash bore
- High disturbance

Facies

- FRW-CorAlgBound
- FRW-AlgBound
- FRW-CorAlgMicrobBound
- RDST/FLST-Rhodoliths
- FRW-MicrobAlgBound
- DET-Consolidated
- FRW-MicrobBound
- DET-Unconsolidated
- Mixed-carb/vol
- VOL-Clast
- VOL-Basalt
- FALL

IODP Samples

- Dating
- MAD/PW
- GEOCHEM
- PMAG
- IWRH

IODP Expedition 389 VCD

Site: M0098A

Hole M0098A

Region: Mahukona

Water Depth: 1100.1 m

Depth (mbsf)	Core recovery	Curated sections	XCT scan image	Line scan image	Facies	IODP samples	Grain size	Fossils	Taphonomy	Color	Visual core description
3.0	Core recovered	3R-1				□		Coralline algae;Coral-undetermined;Porites-branching	encrustation - multilayered	10YR 8/2	High core disturbance Pieces of coral (mostly branches) with thin to absent CCA crusts..
4.5	Core recovered	4R-1						Coralline algae;Coral-undetermined;Porites-branching	encrustation - multilayered	10YR 8/2	High core disturbance Pieces of coral (mostly branches) with thin to absent CCA crusts..
5.0	Core recovered	5R-1				□		Coralline algae;Coral-undetermined;Porites-branching	encrustation - multilayered	10YR 8/2	High core disturbance Pieces of coral (mostly branches) with thicker CCA (3-4mm).
5.2	Core recovered	6R-1						Coralline algae;Coral-undetermined;Porites-branching	encrustation - multilayered	10YR 8/2	High core disturbance Pieces of coral (mostly branches) with thicker CCA (3-4mm).
5.4	Core recovered	7R-1						Coralline algae;Coral-undetermined;Porites-branching;Echinoderm	encrustation - multilayered	10YR 8/2	High core disturbance Pieces of coral (mostly branches) with thicker CCA (3-4mm).
5.5	Core recovered	9R-1						Coralline algae;Coral-undetermined;Porites-branching;Echinoderm	encrustation - multilayered	10YR 8/2	High core disturbance Pieces of coral (mostly branches) with thin CCA (1 mm).
5.6	Core recovered	8R-1						Coralline algae;Coral-undetermined;Porites-branching	encrustation - multilayered	10YR 8/2	High core disturbance Pieces of coral (mostly branches) with thin to absent CCA crusts.
6.0	Core recovered	10R-1						Coralline algae;Coral-undetermined	encrustation - multilayered	10YR 8/2	High core disturbance Pieces of coral (mostly branches) with thin to absent CCA crusts. Some loose sediment embedding the branches. Drilling origin (crushed)

VCD legend

Core recovery

- Core recovered
- No recovery
- Wash bore
- High disturbance

Facies

- FRW-CorAlgBound
- FRW-CorAlgMicrobBound
- FRW-MicrobAlgBound
- FRW-MicrobBound
- FRW-AlgBound
- RDST/FLST-Rhodoliths
- DET-Consolidated
- DET-Unconsolidated
- Mixed-carb/vol
- VOL-Clast
- VOL-Basalt
- FALL

IODP Samples

- Dating
- GEOCHEM
- IWRH
- MAD/PW
- PMAG

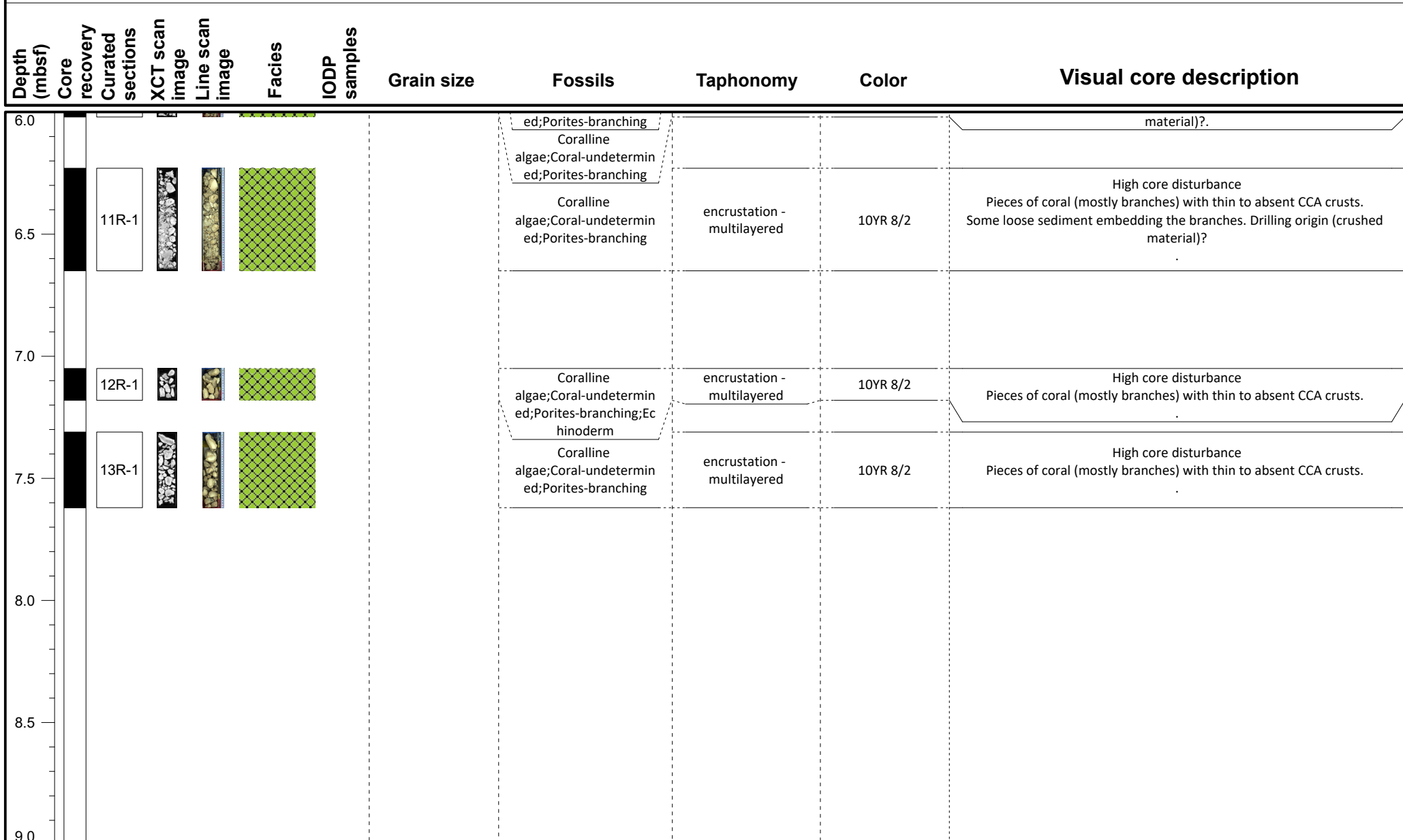
IODP Expedition 389 VCD

Site: M0098A

Hole M0098A

Region: Mahukona

Water Depth: 1100.1 m



VCD legend

Core recovery

- Core recovered
- No recovery
- Wash bore
- High disturbance

Facies

- FRW-CorAlgBound
- FRW-CorAlgMicrobBound
- FRW-MicrobAlgBound
- FRW-MicrobBound
- FRW-AlgBound
- RDST/FLST-Rhodoliths
- DET-Consolidated
- DET-Unconsolidated
- Mixed-carb/vol
- VOL-Clast
- VOL-Basalt
- FALL

IODP Samples

- Dating
- GEOCHEM
- IWRH
- MAD/PW
- PMAG

IODP Expedition 389 VCD

Site: M0098A

Hole M0098A

Region: Mahukona

Water Depth: 1100.1 m

Depth (mbsf)	Core recovery	Curated sections	XCT scan image	Line scan image	Facies	IODP samples	Grain size	Fossils	Taphonomy	Color	Visual core description
9.0											
10.2	Core recovered	14R-1						Coralline algae;Coral-undetermined;Porites-branching	encrustation - multilayered;bioerosion	10YR 8/2	High core disturbance Pieces of coral (mostly branches) with thin (1-2 mm) to absent CCA crusts.
10.7	Core recovered	15R-1						Coralline algae;Coral-undetermined;Porites-branching	encrustation - multilayered;bioerosion	10YR 8/2	High core disturbance Pieces of coral (mostly branches) with thin (1-2 mm) to absent CCA crusts. Thin microbialite appear, over CCA Some loose sediment embedding the branches. Drilling origin (crushed material)?
11.2	Core recovered	16R-1						Coralline algae;Porites-branching	encrustation - multilayered;bioerosion	10YR 8/2;5Y 7/2;N9	High core disturbance Pieces of coral (mostly branches) with thin (1-2 mm) to absent CCA crusts.
11.4	Core recovered	17R-1						Coralline algae;Porites-branching	encrustation - multilayered;bioerosion	10YR 8/2;5Y 7/2;N9	Thin microbialite appear, over CCA. High core disturbance Pieces of coral (mostly branches) with thin to absent CCA crusts. Thin microbialite appear over CCA.
12.0											

VCD legend

Core recovery

- Core recovered
- No recovery
- Wash bore
- High disturbance

Facies

- FRW-CorAlgBound
- FRW-CorAlgMicrobBound
- FRW-MicrobAlgBound
- FRW-MicrobBound
- FRW-AlgBound
- RDST/FLST-Rhodoliths
- DET-Consolidated
- DET-Unconsolidated
- Mixed-carb/vol
- VOL-Clast
- VOL-Basalt
- FALL

IODP Samples

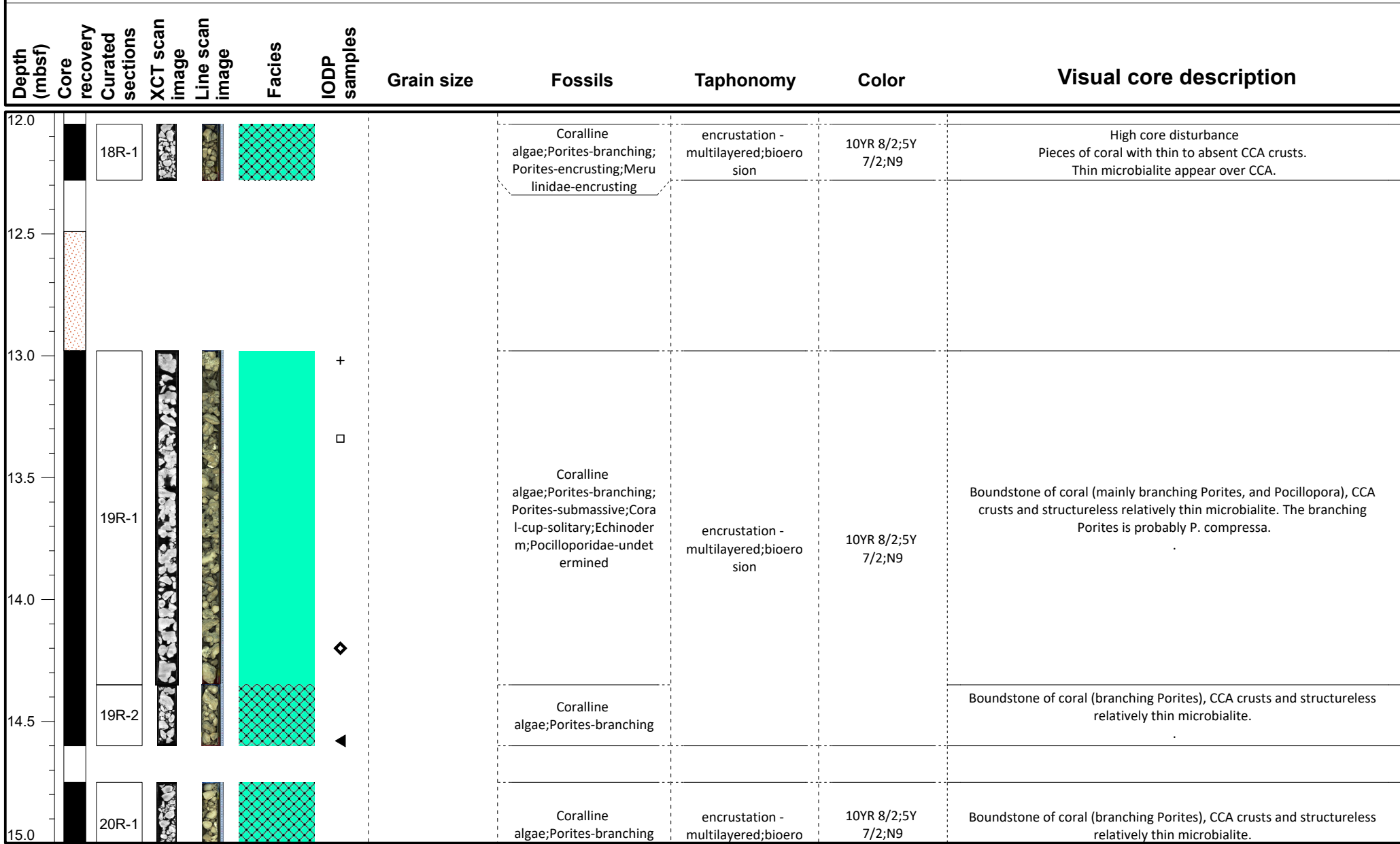
- Dating
- GEOCHEM
- IWRH
- MAD/PW
- PMAG

IODP Expedition 389 VCD

Site: M0098A

Hole M0098A

Region: Mahukona
Water Depth: 1100.1 m



VCD legend

Core recovery

- Core recovered
- No recovery
- Wash bore
- High disturbance

Facies

- FRW-CorAlgBound
- FRW-CorAlgMicrobBound
- FRW-MicrobAlgBound
- FRW-MicrobBound
- FRW-AlgBound
- RDST/FLST-Rhodoliths
- DET-Consolidated
- DET-Unconsolidated
- Mixed-carb/vol
- VOL-Clast
- VOL-Basalt
- FALL

IODP Samples

- Dating
- GEOCHEM
- IWRH
- MAD/PW
- PMAG

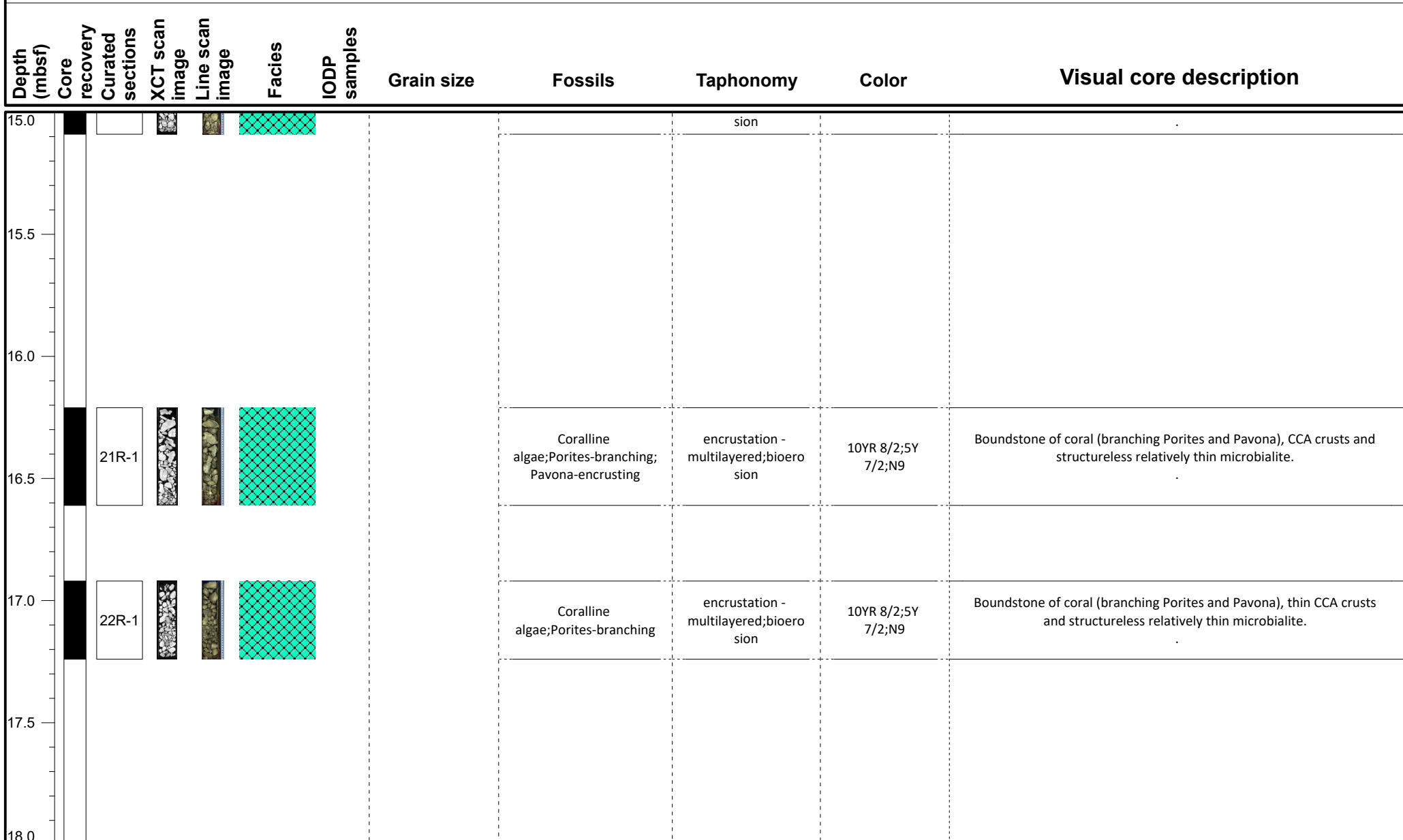
IODP Expedition 389 VCD

Site: M0098A

Hole M0098A

Region: Mahukona

Water Depth: 1100.1 m



VCD legend

Core recovery

- Core recovered
- No recovery
- Wash bore
- High disturbance

Facies

- FRW-CorAlgBound
- FRW-AlgBound
- RDST/FLST-Rhodoliths
- FRW-MicrobAlgBound
- DET-Consolidated
- DET-Unconsolidated
- Mixed-carb/vol
- VOL-Clast
- VOL-Basalt
- FALL

IODP Samples

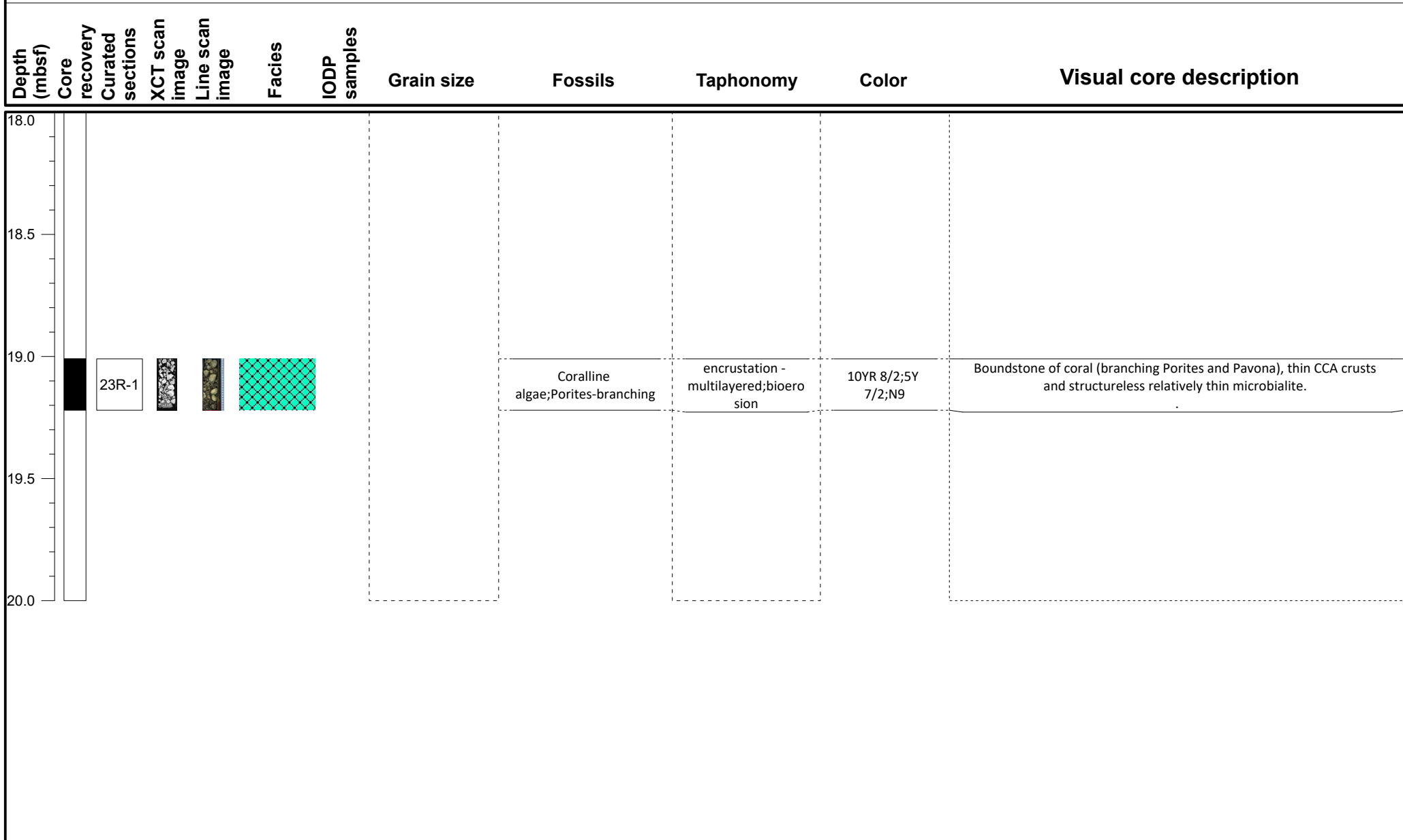
- Dating
- MAD/PW
- GEOCHEM
- PMAG
- IWRH

IODP Expedition 389 VCD

Site: M0098A

Hole M0098A

Region: Mahukona
Water Depth: 1100.1 m



VCD legend

Core recovery

- Core recovered
- No recovery
- Wash bore
- High disturbance

Facies

- | | | |
|---|--|---|
| FRW-CorAlgBound | FRW-AlgBound | Mixed-carb/vol |
| FRW-CorAlgMicrobBound | RDST/FLST-Rhodoliths | VOL-Clast |
| FRW-MicrobAlgBound | DET-Consolidated | VOL-Basalt |
| FRW-MicrobBound | DET-Unconsolidated | FALL |

IODP Samples

- | | |
|---|--|
| Dating | MAD/PW |
| GEOCHEM | PMAG |
| IWRH | |