

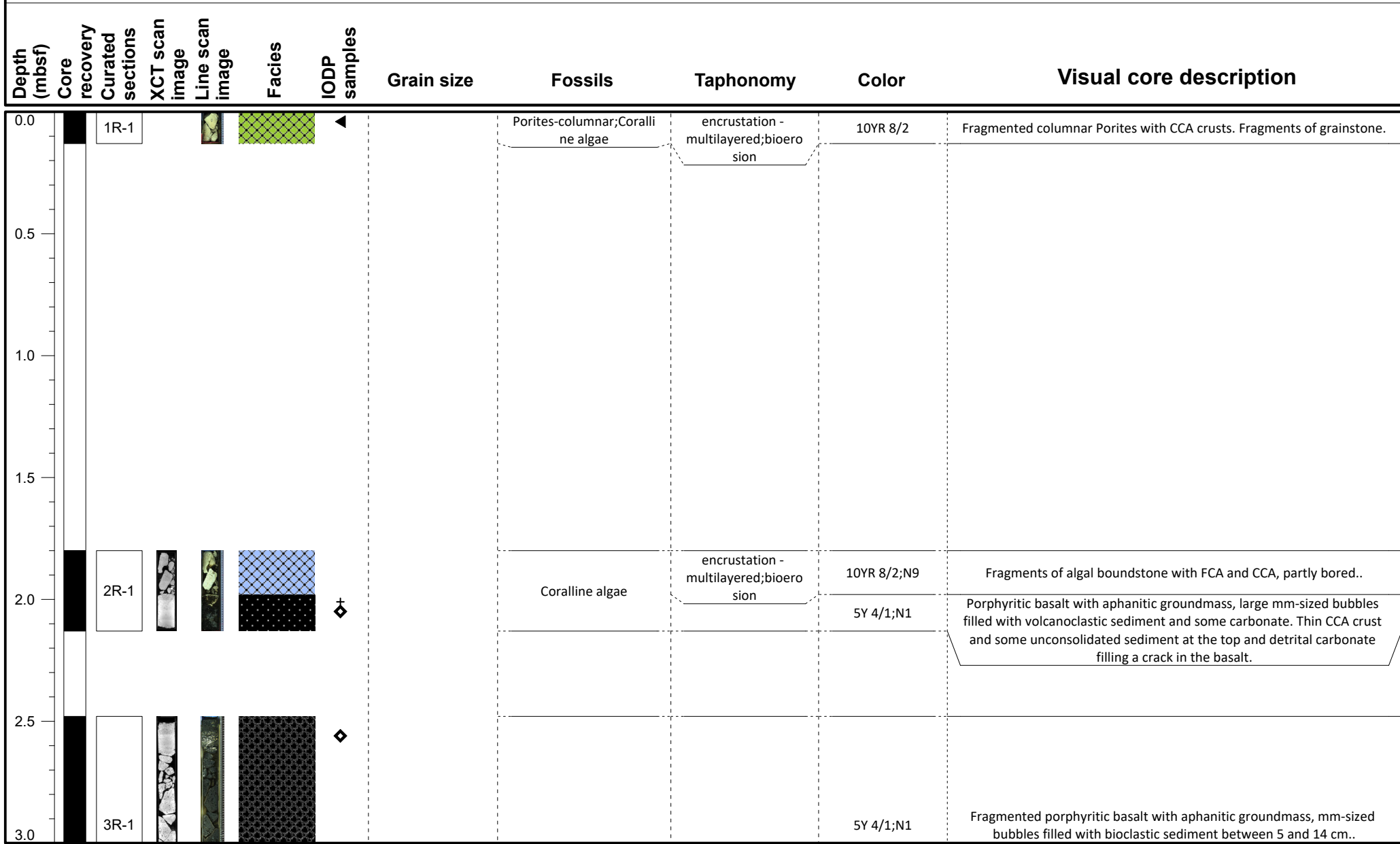
# IODP Expedition 389 VCD

Site: M0100A

# Hole M0100A

Region: Kawaihae

Water Depth: 998.0 m



## VCD legend

### Core recovery

- Core recovered
- No recovery
- Wash bore
- High disturbance

### Facies

- FRW-CorAlgBound
- FRW-CorAlgMicrobBound
- FRW-MicrobAlgBound
- FRW-MicrobBound
- FRW-AlgBound
- RDST/FLST-Rhodoliths
- DET-Consolidated
- DET-Unconsolidated
- Mixed-carb/vol
- VOL-Clast
- VOL-Basalt
- FALL

### IODP Samples

- Dating
- MAD/PW
- GEOCHEM
- PMAG
- IWRH

# IODP Expedition 389 VCD

Site: M0100A

# Hole M0100A

Region: Kawaihae  
Water Depth: 998.0 m

Depth (mbsf)	Core recovery	Curated sections	XCT scan image	Line scan image	Facies	IODP samples	Grain size	Fossils	Taphonomy	Color	Visual core description
3.0											
3.5		4R-1				+			fragmentation	5Y 4/1;N1 10YR 8/2	Fragmented porphyritic basalt with aphanitic groundmass, mm-sized bubbles filled with bioclastic sediment between 15 and 22 cm.. Grainstone with bioclasts, volcanic grains and intraclasts. Two fine-grained laminated layers of silt.
4.0						◇		Porites-undetermined		5Y 4/1;N1 5Y 4/1;10YR 8/2;10YR 6/6	Porphyritic basalt with aphanitic groundmass, mm-sized bubbles. Fragments of coral, grainstone and basalt.
4.5		5R-1								5Y 4/1;N1	Porphyritic basalt with aphanitic groundmass, round, mm-sized bubbles. From 30 to 70 cm is a possibly magmato-phreatic volcanic breccia, with olivine alteration to iddingsite. Amygdaloidal texture with silica infill.
5.0						+					
5.5		5R-2				◇				5Y 4/1;N1;5R 3/4	Porphyritic basalt with aphanitic groundmass, round bubbles coalesced. From 0 to 7 cm volcanic breccia as at the base of section 1. From 10 to 27 cm bubbles are aligned. At 44 cm reddish color might indicate ash. From 52 to 60 cm the basalt is brecciated, and from 86 to 110 there are fewer but larger (3-4 mm) bubbles..
6.0						□					

## VCD legend

### Core recovery

- Core recovered
- No recovery
- Wash bore
- High disturbance

### Facies

- FRW-CorAlgBound
- FRW-AlgBound
- FRW-CorAlgMicrobBound
- RDST/FLST-Rhodoliths
- FRW-MicrobAlgBound
- DET-Consolidated
- FRW-MicrobBound
- DET-Unconsolidated
- Mixed-carb/vol
- VOL-Clast
- VOL-Basalt
- FALL

### IODP Samples

- Dating
- GEOCHEM
- IWRH
- MAD/PW
- PMAG

# IODP Expedition 389 VCD

Site: M0100A

# Hole M0100A

Region: Kawaihae  
Water Depth: 998.0 m

Depth (mbsf)	Core recovery	Curated sections	XCT scan image	Line scan image	Facies	IODP samples	Grain size	Fossils	Taphonomy	Color	Visual core description
6.0								Coralline algae		5Y 4/1;N1;10YR 8/2	Fragments of basalt and algal boundstone.
6.5						◆ +					
7.0	6R-1									5R 3/4;5Y 4/1;N1	Porphyritic basalt with aphanitic groundmass, round bubbles and few coalesced. From 22 to 35 cm the basalt is brecciated. From 80 to 95 cm reddish color might indicate ash. From 115 to 130 cm the basalt is brecciated..
7.5											
8.0	7R-1					+				5R 3/4;5Y 4/1;N1	Porphyritic basalt with aphanitic groundmass, mm-sized round bubbles. From 35 to 57 cm the basalt is brecciated. .
8.5						◆					
8.5	8R-1										Brecciated porphyritic basalt with aphanitic groundmass, mm-sized round bubbles. The color is pervasively reddish .
9.0											

## VCD legend

### Core recovery

- Core recovered
- No recovery
- Wash bore
- High disturbance

### Facies

- FRW-CorAlgBound
- FRW-AlgBound
- FRW-CorAlgMicrobBound
- RDST/FLST-Rhodoliths
- FRW-MicrobAlgBound
- DET-Consolidated
- FRW-MicrobBound
- DET-Unconsolidated
- Mixed-carb/vol
- VOL-Clast
- VOL-Basalt
- FALL

### IODP Samples

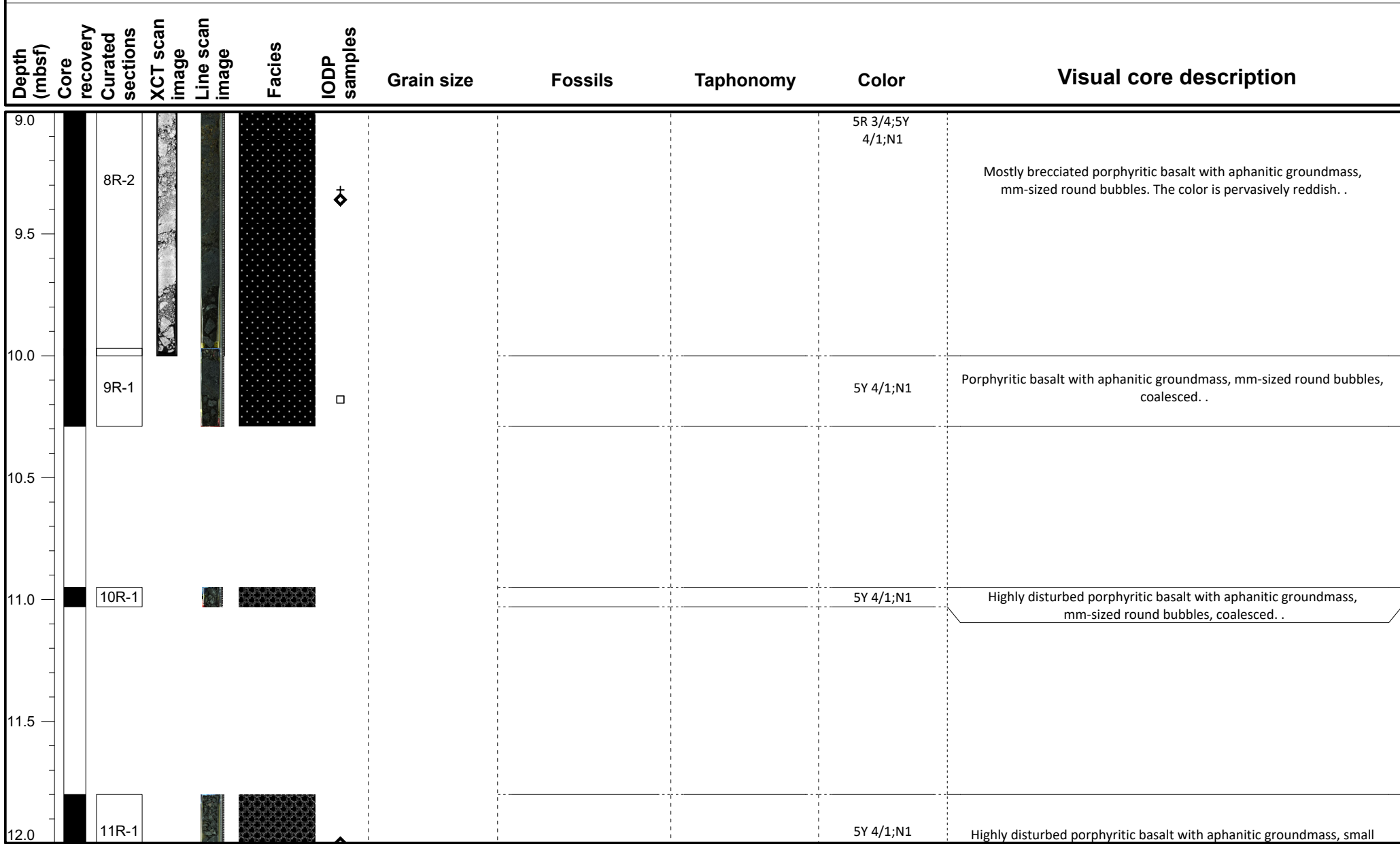
- Dating
- GEOCHEM
- IWRH
- MAD/PW
- PMAG

# IODP Expedition 389 VCD

Site: M0100A

# Hole M0100A

Region: Kawaihae  
Water Depth: 998.0 m



## VCD legend

### Core recovery

- Core recovered
- No recovery
- Wash bore
- High disturbance

### Facies

- FRW-CorAlgBound
- FRW-CorAlgMicrobBound
- FRW-MicrobAlgBound
- FRW-MicrobBound
- FRW-AlgBound
- RDST/FLST-Rhodoliths
- DET-Consolidated
- DET-Unconsolidated
- Mixed-carb/vol
- VOL-Clast
- VOL-Basalt
- FALL

### IODP Samples

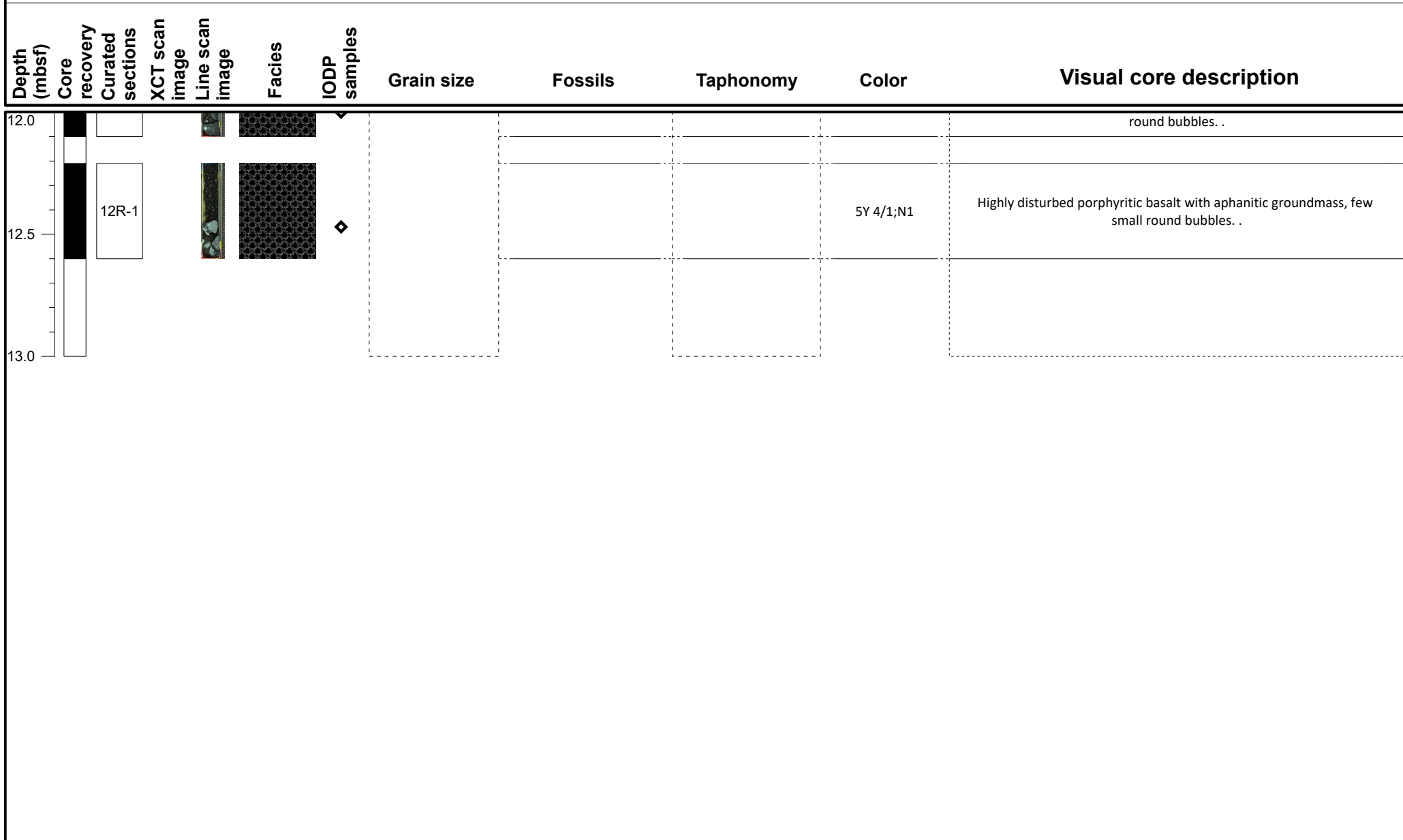
- Dating
- GEOCHEM
- IWRH
- + MAD/PW
- ◇ PMAG

# IODP Expedition 389 VCD

Site: M0100A

# Hole M0100A

Region: Kawaihae  
Water Depth: 998.0 m



## VCD legend

### Core recovery

- Core recovered
- No recovery
- Wash bore
- High disturbance

### Facies

- FRW-CorAlgBound
- FRW-CorAlgMicrobBound
- FRW-MicrobAlgBound
- FRW-MicrobBound
- FRW-AlgBound
- RDST/FLST-Rhodoliths
- DET-Consolidated
- DET-Unconsolidated
- Mixed-carb/vol
- VOL-Clast
- VOL-Basalt
- FALL

### IODP Samples

- Dating
- + MAD/PW
- GEOCHEM
- ◊ PMAG
- IWRH