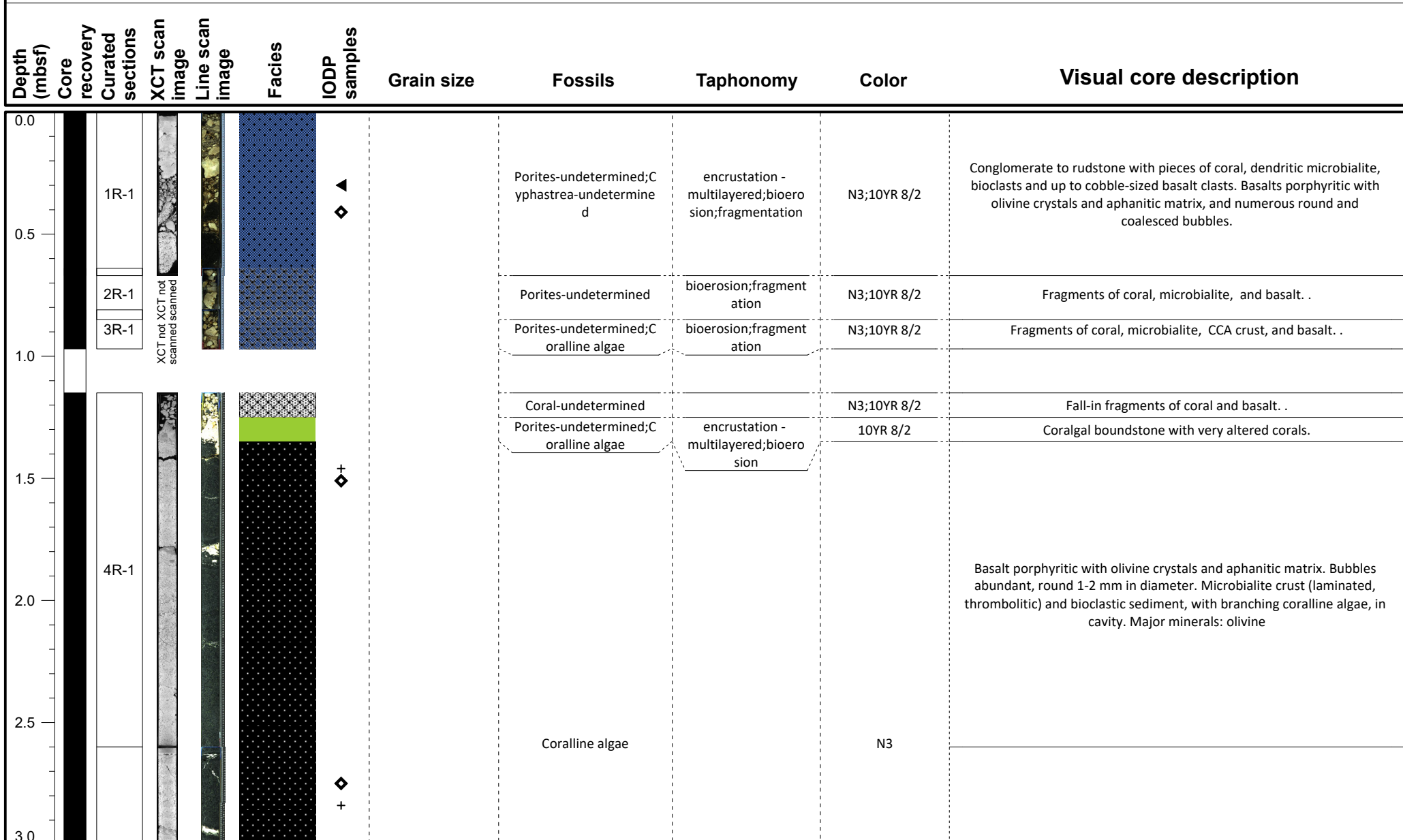


IODP Expedition 389 VCD

Site: M0107A

Hole M0107A

Region: Kawaihae
Water Depth: 403.8 m



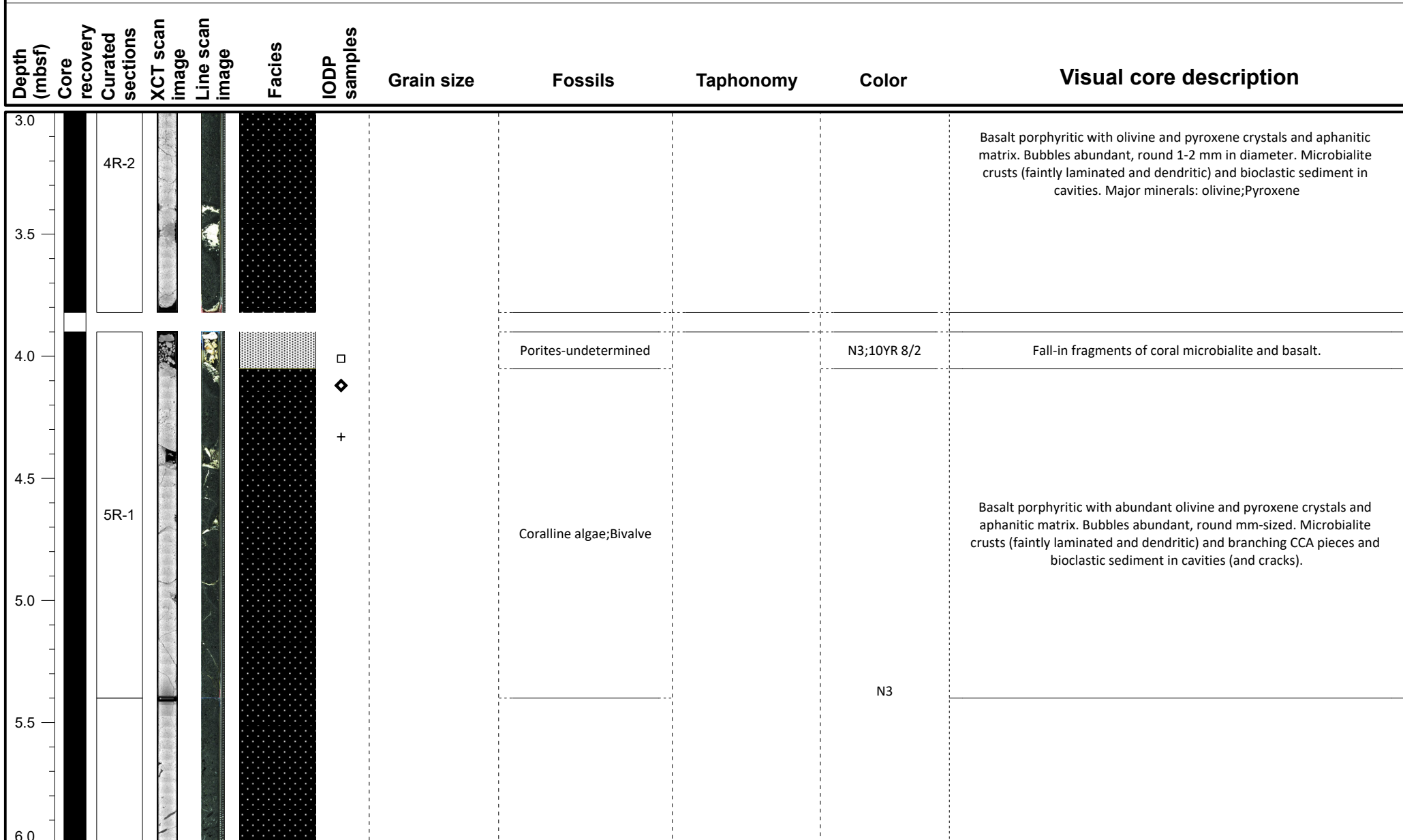
<i>VCD legend</i>	Core recovery	Facies	IODP Samples
	<ul style="list-style-type: none"> Core recovered No recovery Wash bore High disturbance 	<ul style="list-style-type: none"> FRW-CorAlgBound FRW-CorAlgMicrobBound FRW-MicrobAlgBound FRW-MicrobBound FRW-AlgBound RDST/FLST-Rhodoliths DET-Consolidated DET-Unconsolidated Mixed-carb/vol VOL-Clast VOL-Basalt FALL 	<ul style="list-style-type: none"> Dating GEOCHEM IWRH + MAD/PW PMAG

IODP Expedition 389 VCD

Site: M0107A

Hole M0107A

Region: Kawaihae
Water Depth: 403.8 m



VCD legend

Core recovery

- Core recovered
- No recovery
- Wash bore
- High disturbance

Facies

- FRW-CorAlgBound
- FRW-AlgBound
- RDST/FLST-Rhodoliths
- FRW-MicrobAlgBound
- DET-Consolidated
- DET-Unconsolidated
- Mixed-carb/vol
- VOL-Clast
- VOL-Basalt
- FALL

IODP Samples

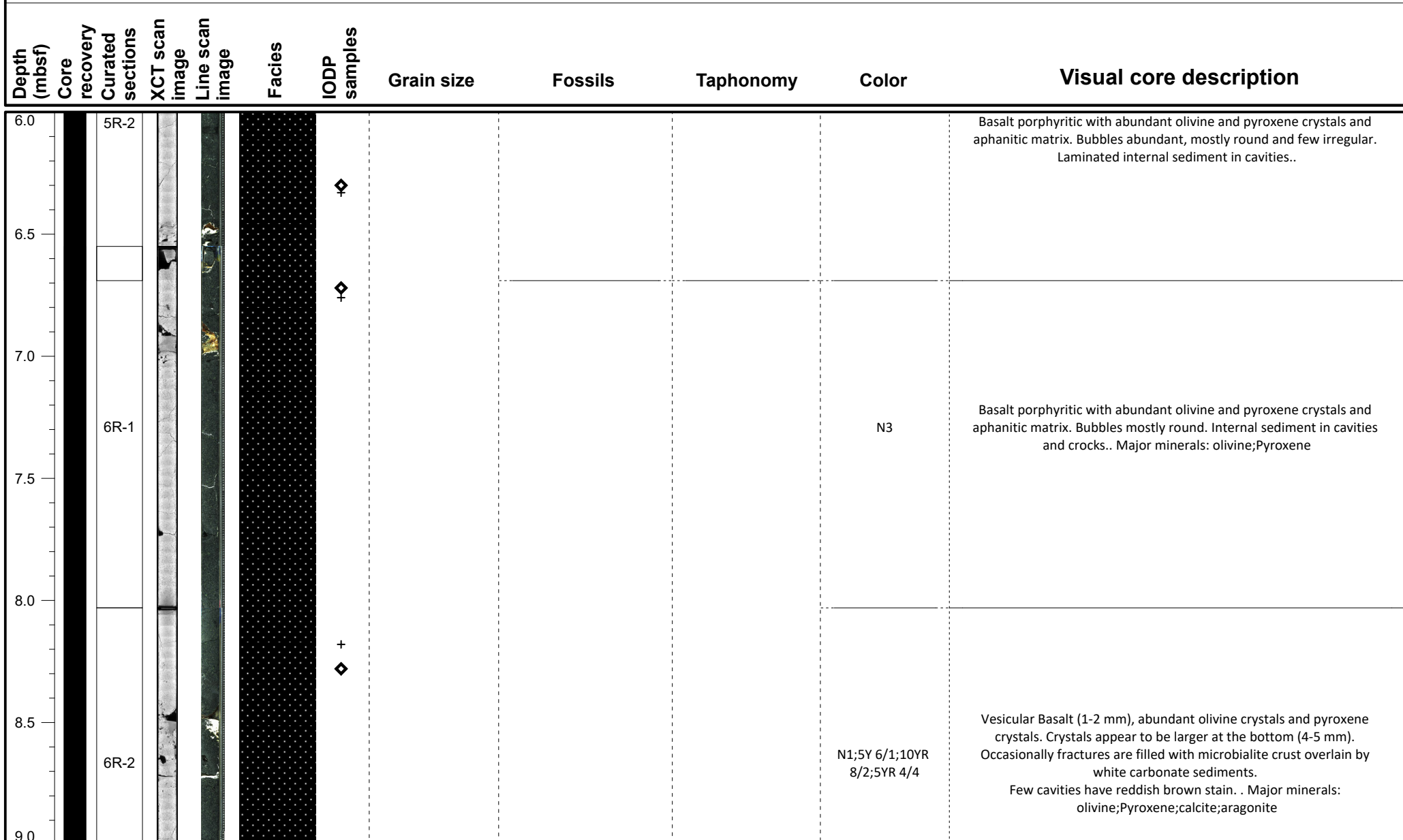
- Dating
- GEOCHEM
- IWRH
- MAD/PW
- PMAG

IODP Expedition 389 VCD

Site: M0107A

Hole M0107A

Region: Kawaihae
Water Depth: 403.8 m



VCD legend

Core recovery

- Core recovered
- No recovery
- Wash bore
- High disturbance

Facies

- FRW-CorAlgBound
- FRW-AlgBound
- FRW-CorAlgMicrobBound
- RDST/FLST-Rhodoliths
- FRW-MicrobAlgBound
- DET-Consolidated
- FRW-MicrobBound
- DET-Unconsolidated
- Mixed-carb/vol
- VOL-Clast
- VOL-Basalt
- FALL

IODP Samples

- Dating
- GEOCHEM
- IWRH
- MAD/PW
- PMAG

IODP Expedition 389 VCD

Site: M0107A

Hole M0107A

Region: Kawaihae
Water Depth: 403.8 m

Depth (mbsf)	Core recovery	Curated sections	XCT scan image	Line scan image	Facies	IODP samples	Grain size	Fossils	Taphonomy	Color	Visual core description
9.0											
9.5											
9.75		7R-1				□					
10.0						+					
10.25		7R-2				◇				N1;5Y 6/1;10YR 8/2	<p>Pophyritic Vesicular Basalt, abundant olivine and pyroxene crystals. Crystals are up to 4-5 mm in diameter. Olivine appear to be rounded to sub rounded and CPX appear to be angular. Occasionally fractures are filled with microbialite crust overlain by white carbonate sediments. Few cavities have reddish brown stain. Aphanitic matrix.. Major minerals: olivine;Pyroxene;calcite;aragonite</p>
10.5										N1	<p>Porphyritic Basalt, abundant olivine and pyroxene crystals. Predominantly rounded to sub-rounded vesicles.. Major minerals: olivine;Pyroxene</p>
11.0											
11.25		8R-1				+					
11.5						◇		Gastropod			
12.0										N1;10YR 8/2;5YR 4/4;5Y	<p>Porphyritic Basalt (1- 2 - mm vesicle diameter), abundant olivine and cpx crystals). Microbialite crusts are present occasionally within the fractures/cavities. The cavities are filled with carbonate sand (mud to sand size). At some places presence of dark black volcanoclastic grains in carbonate sediments. One cavity is stained reddish brown. . Major minerals: olivine;Pyroxene;calcite;aragonite</p>

VCD legend

Core recovery

- Core recovered
- No recovery
- Wash bore
- High disturbance

Facies

- FRW-CorAlgBound
- FRW-AlgBound
- FRW-CorAlgMicrobBound
- RDST/FLST-Rhodoliths
- FRW-MicrobAlgBound
- DET-Consolidated
- FRW-MicrobBound
- DET-Unconsolidated
- Mixed-carb/vol
- VOL-Clast
- VOL-Basalt
- FALL

IODP Samples

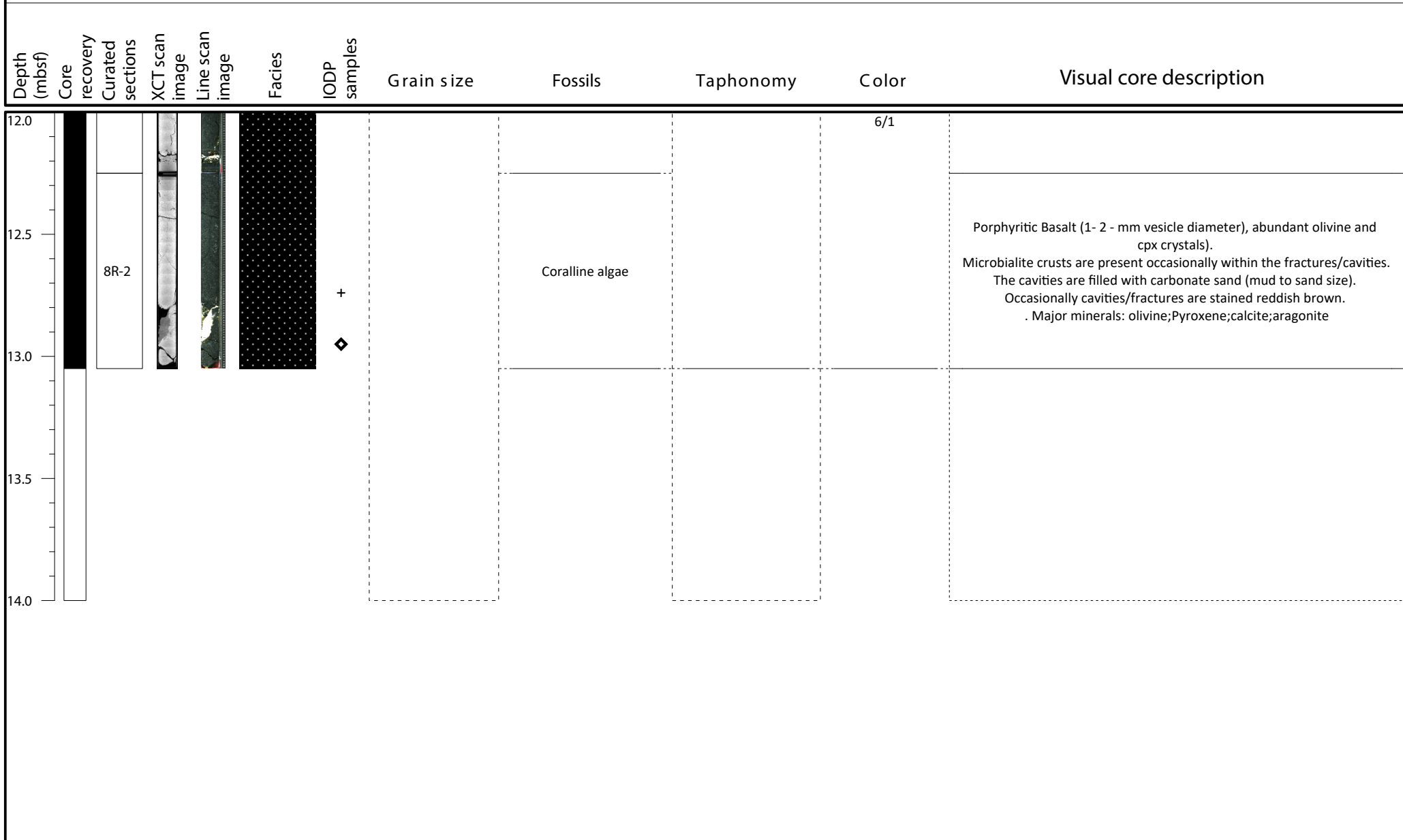
- Dating
- MAD/PW
- GEOCHEM
- PMAG
- IWRH

IODP Expedition 389 VCD

Site: M0107A

Hole M0107A

Region: Kawaihae
Water Depth: 403.8 m



<h2>VCD legend</h2>	Core recovery ■ Core recovered □ No recovery ▨ Wash bore ▩ High disturbance	Facies ■ FRW-CorAlgBound ■ FRW-CorAlgMicrobBound ■ FRW-MicrobAlgBound ■ FRW-MicrobBound ■ FRW-AlgBound ■ RDST/FLST-Rhodoliths ■ DET-Consolidated ■ DET-Unconsolidated ■ Mixed-carb/vol ■ VOL-Clast ■ VOL-Basalt ■ FALL	IODP Samples ◀ Dating □ GEOCHEM ○ IWRH + MAD/PW ◇ PMAG
---------------------	--	---	--