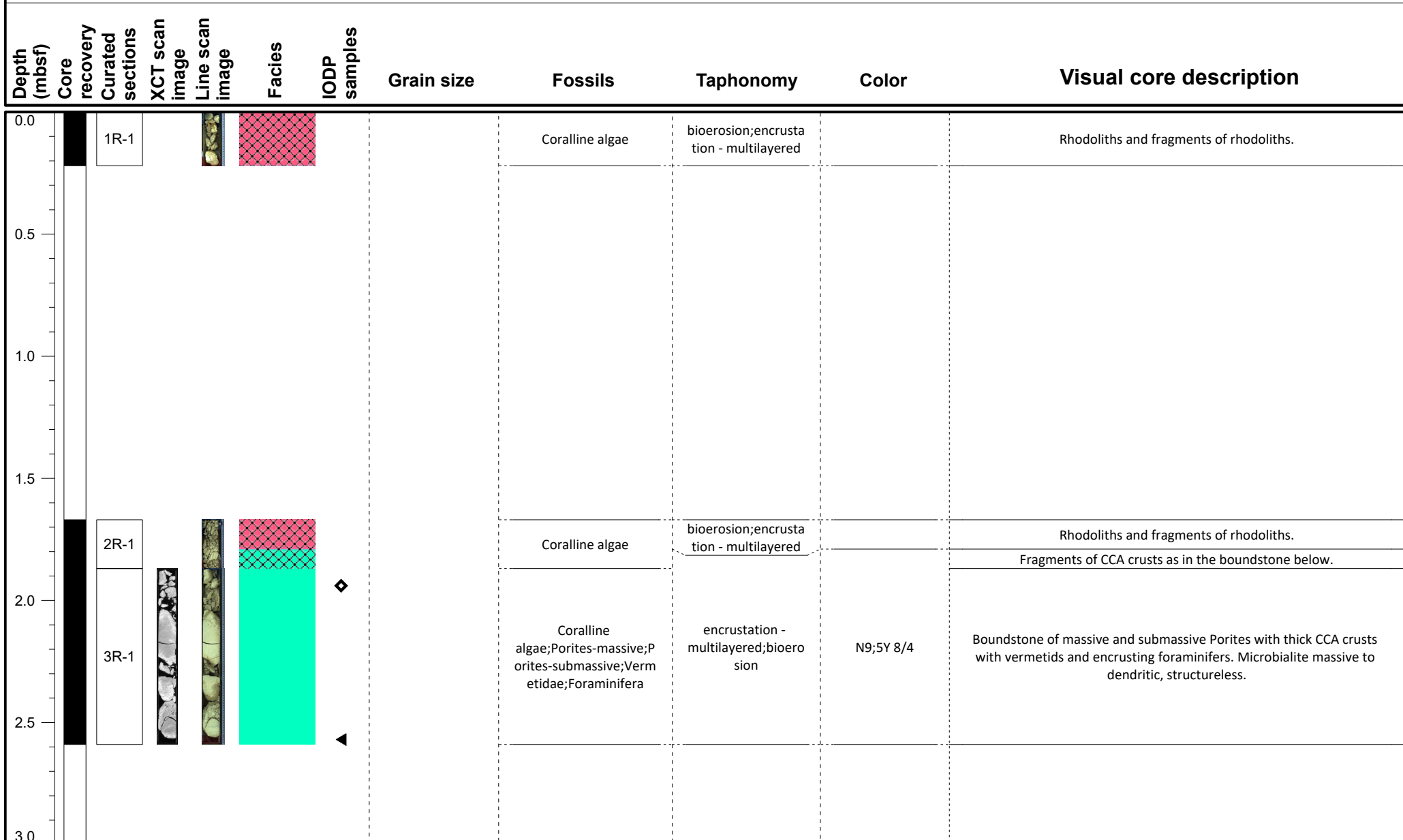


IODP Expedition 389 VCD

Site: M0110A

Hole M0110A

Region: Kawaihae
Water Depth: 156.9 m



VCD legend

Core recovery

- Core recovered
- No recovery
- Wash bore
- High disturbance

Facies

- FRW-CorAlgBound
- FRW-CorAlgMicrobBound
- FRW-MicrobAlgBound
- FRW-MicrobBound
- FRW-AlgBound
- RDST/FLST-Rhodoliths
- DET-Consolidated
- DET-Unconsolidated
- Mixed-carb/vol
- VOL-Clast
- VOL-Basalt
- FALL

IODP Samples

- Dating
- GEOCHEM
- IWRH
- MAD/PW
- PMAG

IODP Expedition 389 VCD

Site: M0110A

Hole M0110A

Region: Kawaihae
Water Depth: 156.9 m

Depth (mbsf)	Core recovery	Curated sections	XCT scan image	Line scan image	Facies	IODP samples	Grain size	Fossils	Taphonomy	Color	Visual core description
3.0 - 3.5	Core recovered	4R-1			FRW-CorAlgBound	+		Coralline algae; Porites-submassive; Vermetidae; Foraminifera; Porites-columnar; Porites-platy	encrustation - multilayered; bioerosion	N9; 5Y 8/4	Boundstone of submassive, platy and columnar Porites with thick CCA crusts. Microbialite massive to dendritic, structureless.
3.5 - 4.5	Core recovered	5R-1			FRW-CorAlgMicrobBound (top), DET-Consolidated (bottom)			Coralline algae; Porites-undetermined	encrustation - multilayered; bioerosion bioerosion; fragmentation	N9; 5Y 8/4 5Y 6/1; 5Y 4/1	Fragments of coralg microbialite boundstone. Bioclastic rudstone with consolidated internal sediment in cavities. Dark staining. The top is probably a sequence boundary.
4.5 - 5.5	Core recovered	6R-1			FRW-CorAlgBound (top), DET-Consolidated (middle), FRW-CorAlgBound (bottom)			Coral-undetermined; Mollusc Pocillopora-undetermined; Porites-submassive; Coral-undetermined; Coralline algae	bioerosion; fragmentation	N9; 5Y 8/4 5Y 7/2; 5Y 4/1; N9	Fragments of coral. Rudstone with cm-sized bioclasts. Densely stained at the top. Cavities filled with consolidated internal sediment. Very altered Porites.
5.5 - 6.0	Core recovered				FRW-CorAlgBound			Porites-undetermined; C	bioerosion; encrustation	5Y 8/4; N9; 5Y 7/2	Coralgal-microbialite boundstone as below.

VCD legend

Core recovery

- Core recovered
- No recovery
- Wash bore
- High disturbance

Facies

- FRW-CorAlgBound
- FRW-CorAlgMicrobBound
- FRW-MicrobAlgBound
- FRW-MicrobBound
- FRW-AlgBound
- RDST/FLST-Rhodoliths
- DET-Consolidated
- DET-Unconsolidated
- Mixed-carb/vol
- VOL-Clast
- VOL-Basalt
- FALL

IODP Samples

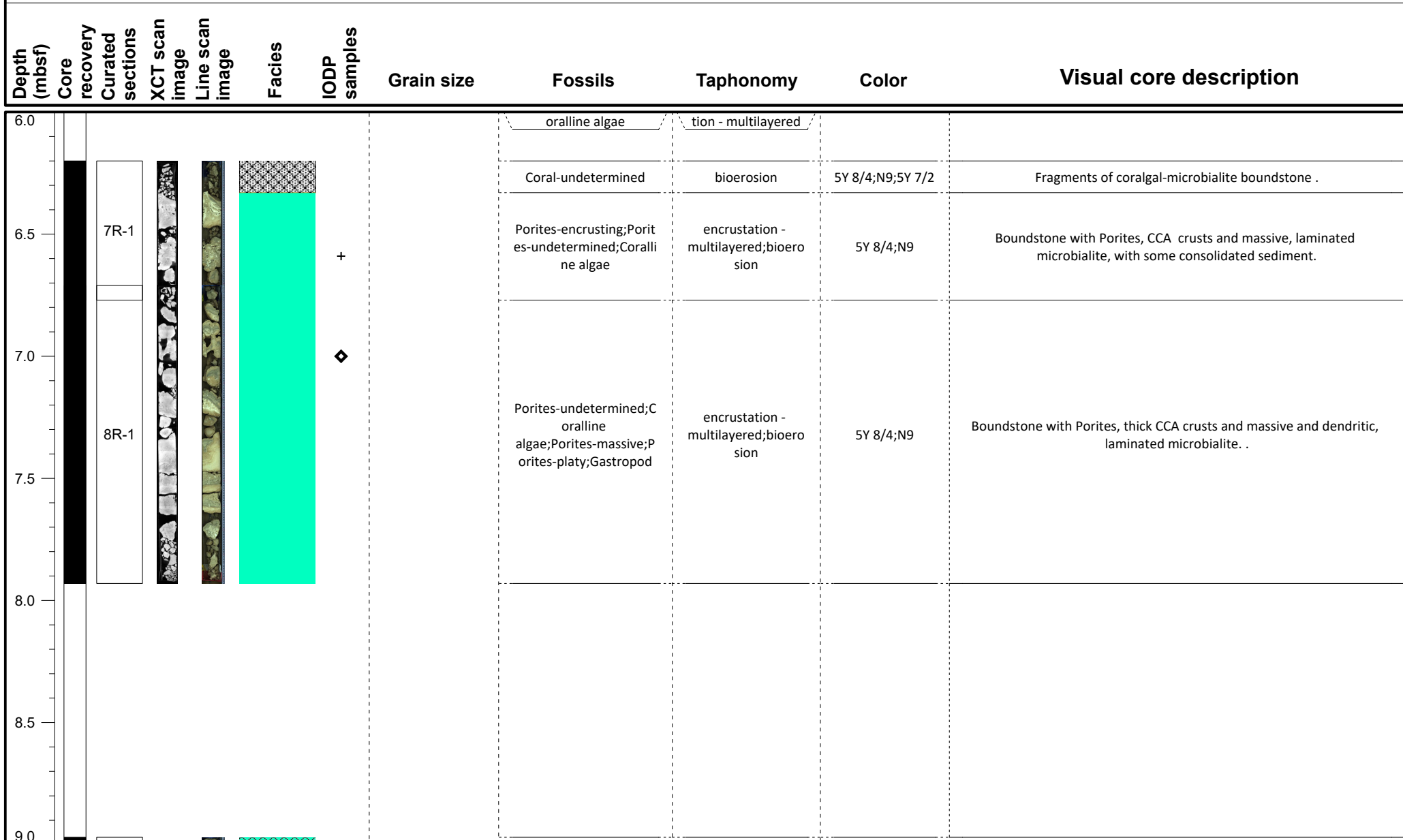
- Dating
- GEOCHEM
- IWRH
- MAD/PW
- PMAG

IODP Expedition 389 VCD

Site: M0110A

Hole M0110A

Region: Kawaihae
Water Depth: 156.9 m



VCD legend	Core recovery	Facies			IODP Samples
	<ul style="list-style-type: none"> Core recovered No recovery Wash bore High disturbance 	<ul style="list-style-type: none"> FRW-CorAlgBound FRW-CorAlgMicrobBound FRW-MicrobAlgBound FRW-MicrobBound 	<ul style="list-style-type: none"> FRW-AlgBound RDST/FLST-Rhodoliths DET-Consolidated DET-Unconsolidated 	<ul style="list-style-type: none"> Mixed-carb/vol VOL-Clast VOL-Basalt FALL 	<ul style="list-style-type: none"> Dating GEOCHEM IWRH MAD/PW PMAG

IODP Expedition 389 VCD

Site: M0110A

Hole M0110A

Region: Kawaihae
Water Depth: 156.9 m

Depth (mbsf)	Core recovery	Curated sections	XCT scan image	Line scan image	Facies	IODP samples	Grain size	Fossils	Taphonomy	Color	Visual core description
9.0		9R-1				◆ ▲		Porites-undetermined; Coralline algae	encrustation - multilayered; bioerosion	5Y 8/4;N9	Fragments of boundstone with Porites, CCA crusts and microbialite. .
9.5		10R-1						Porites-undetermined; Coralline algae; Porites-massive	encrustation - multilayered; bioerosion	5Y 8/4;N9	Boundstone with Porites, CCA crusts including branching morphologies and microbialite. .
10.0											
10.5		11R-1				□ +		Coralline algae; Porites-massive; Porites-submassive	encrustation - multilayered; bioerosion	5Y 8/4;N9	Boundstone with Porites, CCA crusts and thick massive to dendritic, structureless microbialite. .
11.0											
11.5		12R-1						Coralline algae; Porites-undetermined	encrustation - multilayered; bioerosion	5Y 8/4;N9	Fragments of boundstone with Porites, CCA crusts and microbialite. .
		13R-1						Coralline algae; Porites-undetermined	encrustation - multilayered; bioerosion	5Y 8/4;N9	Fragments of boundstone with Porites, CCA crusts and microbialite. .
12.0											

VCD legend

Core recovery

- Core recovered
- No recovery
- Wash bore
- High disturbance

Facies

- FRW-CorAlgBound
- FRW-AlgBound
- FRW-CorAlgMicrobBound
- FRW-MicrobAlgBound
- FRW-MicrobBound
- RDST/FLST-Rhodoliths
- DET-Consolidated
- DET-Unconsolidated
- Mixed-carb/vol
- VOL-Clast
- VOL-Basalt
- FALL

IODP Samples

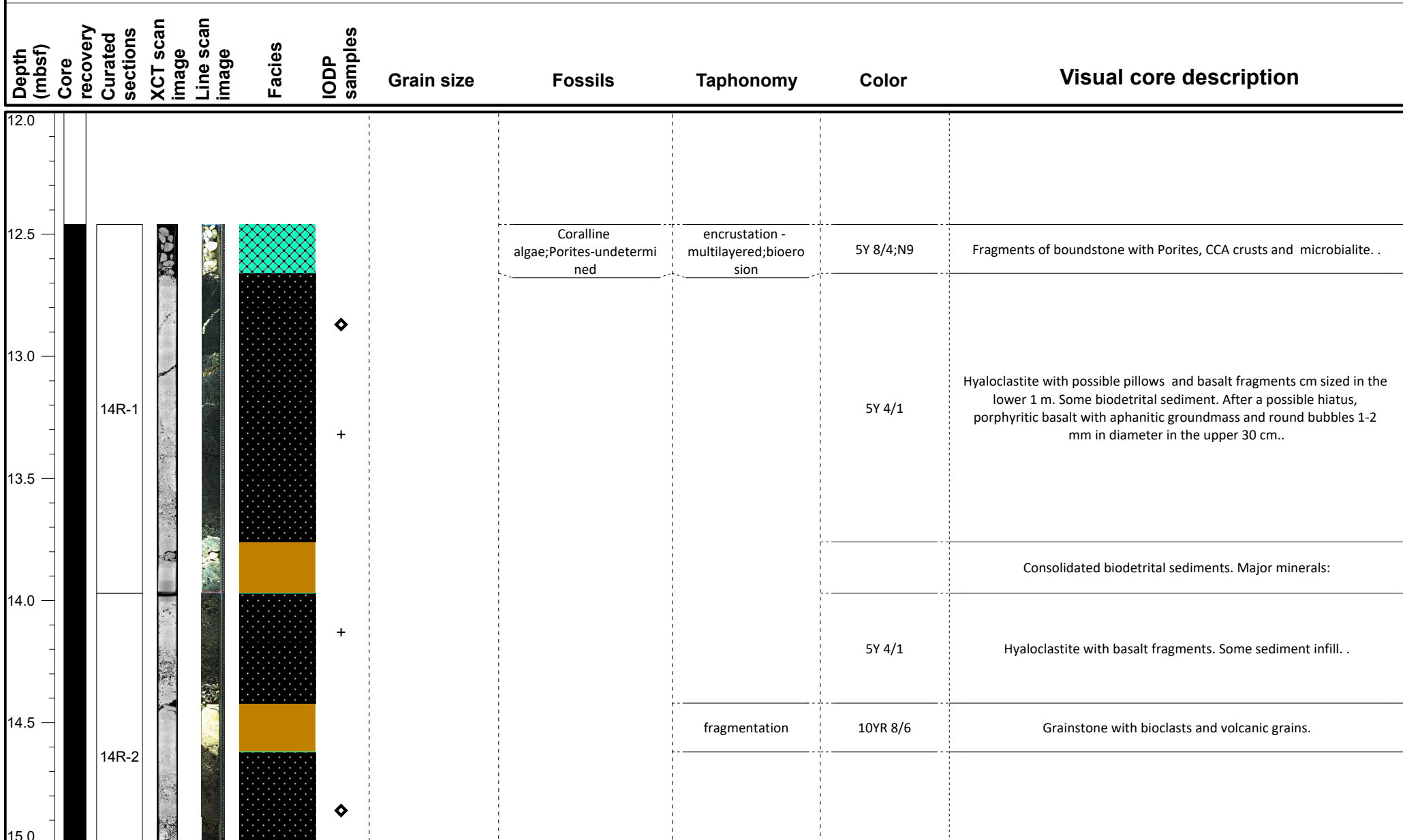
- Dating
- GEOCHEM
- IWRH
- MAD/PW
- PMAG

IODP Expedition 389 VCD

Site: M0110A

Hole M0110A

Region: Kawaihae
Water Depth: 156.9 m



VCD legend

Core recovery

- Core recovered
- No recovery
- Wash bore
- High disturbance

Facies

- FRW-CorAlgBound
- FRW-CorAlgMicrobBound
- FRW-MicrobAlgBound
- FRW-MicrobBound
- FRW-AlgBound
- RDST/FLST-Rhodoliths
- DET-Consolidated
- DET-Unconsolidated
- Mixed-carb/vol
- VOL-Clast
- VOL-Basalt
- FALL

IODP Samples

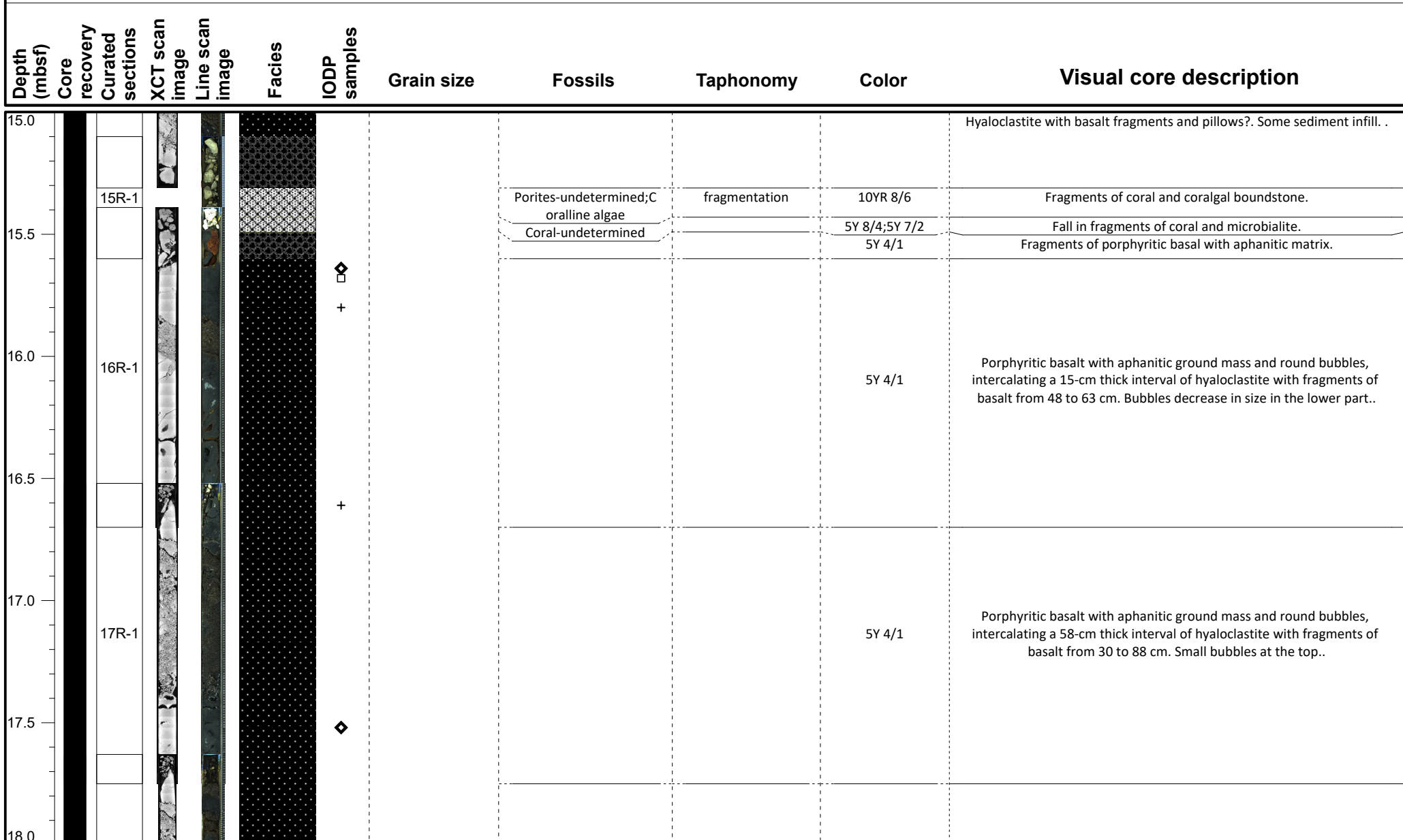
- Dating
- GEOCHEM
- IWRH
- MAD/PW
- PMAG

IODP Expedition 389 VCD

Site: M0110A

Hole M0110A

Region: Kawaihae
Water Depth: 156.9 m



VCD legend

Core recovery

- Core recovered
- No recovery
- Wash bore
- High disturbance

Facies

- FRW-CorAlgBound
- FRW-AlgBound
- RDST/FLST-Rhodoliths
- FRW-MicrobAlgBound
- DET-Consolidated
- DET-Unconsolidated
- Mixed-carb/vol
- VOL-Clast
- VOL-Basalt
- FALL

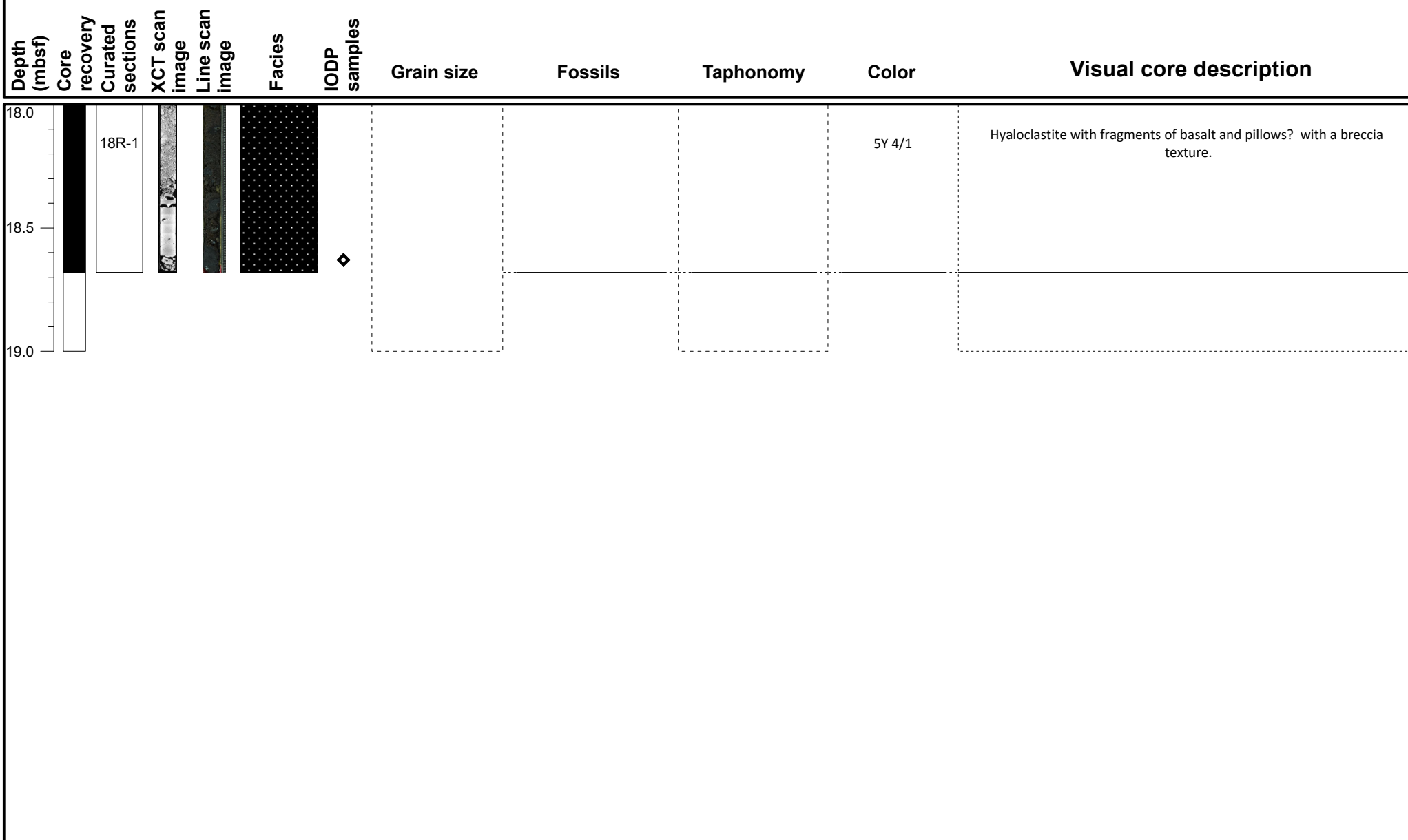
IODP Samples

- Dating
- MAD/PW
- GEOCHEM
- PMAG
- IWRH

IODP Expedition 389 VCD

Site: M0110A

Hole M0110A

Region: Kawaihae
Water Depth: 156.9 m

VCD legend

Core recovery

- Core recovered
- No recovery
- ▨ Wash bore
- ▩ High disturbance

Facies

- FRW-CorAlgBound
- FRW-CorAlgMicrobBound
- FRW-MicrobAlgBound
- FRW-MicrobBound
- FRW-AlgBound
- RDST/FLST-Rhodoliths
- DET-Consolidated
- DET-Unconsolidated
- Mixed-carb/vol
- VOL-Clast
- VOL-Basalt
- FALL

IODP Samples

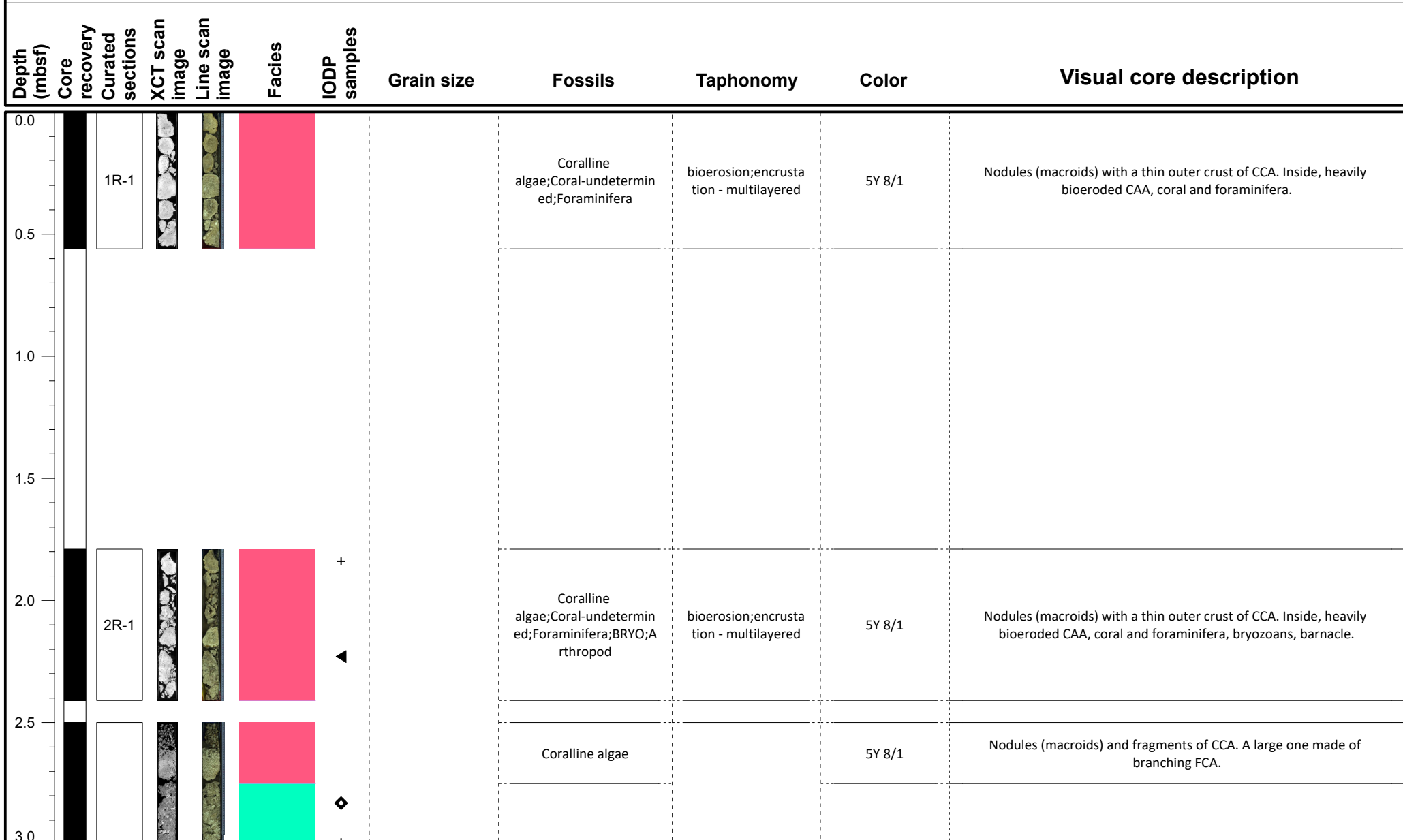
- ◀ Dating
- GEOCHEM
- IWRH
- ⊕ MAD/PW
- ◆ PMAG

IODP Expedition 389 VCD

Site: M0110B

Hole M0110B

Region: Kawaihae
Water Depth: 144.8 m



VCD legend

Core recovery

- Core recovered
- No recovery
- Wash bore
- High disturbance

Facies

- FRW-CorAlgBound
- FRW-CorAlgMicrobBound
- FRW-MicrobAlgBound
- FRW-MicrobBound
- FRW-AlgBound
- RDST/FLST-Rhodoliths
- DET-Consolidated
- DET-Unconsolidated
- Mixed-carb/vol
- VOL-Clast
- VOL-Basalt
- FALL

IODP Samples

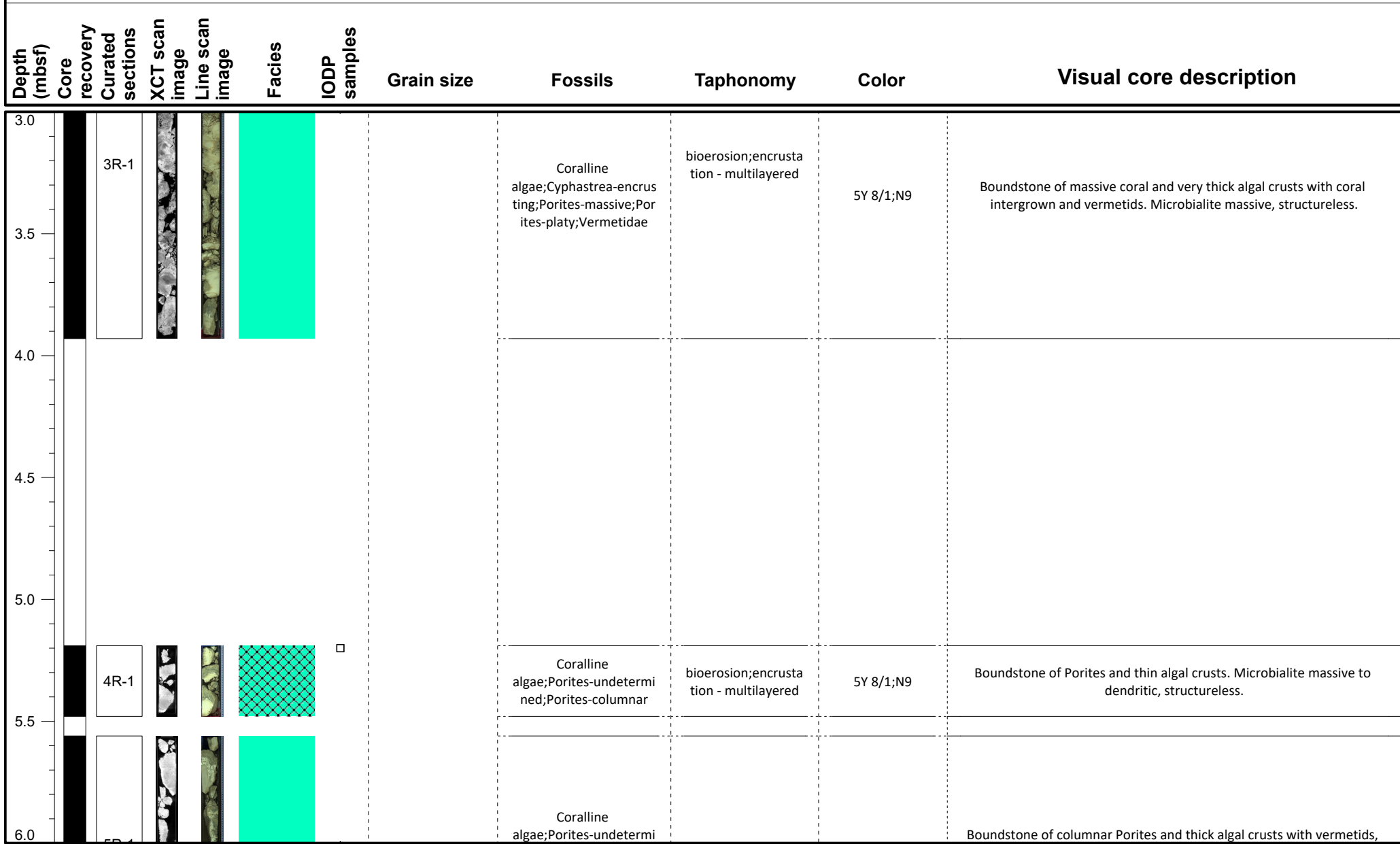
- Dating
- GEOCHEM
- IWRH
- + MAD/PW
- ◆ PMAG

IODP Expedition 389 VCD

Site: M0110B

Hole M0110B

Region: Kawaihae
Water Depth: 144.8 m



VCD legend

- Core recovery**
- Core recovered
 - No recovery
 - Wash bore
 - High disturbance

- Facies**
- FRW-CorAlgBound
 - FRW-CorAlgMicrobBound
 - FRW-MicrobAlgBound
 - FRW-MicrobBound

- Facies**
- FRW-AlgBound
 - RDST/FLST-Rhodoliths
 - DET-Consolidated
 - DET-Unconsolidated

- Facies**
- Mixed-carb/vol
 - VOL-Clast
 - VOL-Basalt
 - FALL

- IODP Samples**
- Dating
 - GEOCHEM
 - IWRH
 - + MAD/PW
 - ◊ PMAG

IODP Expedition 389 VCD

Site: M0110B

Hole M0110B

Region: Kawaihae
Water Depth: 144.8 m

Depth (mbsf)	Core recovery	Curated sections	XCT scan image	Line scan image	Facies	IODP samples	Grain size	Fossils	Taphonomy	Color	Visual core description
6.0	Core recovered	5R-1			FRW-CorAlgBound	◆		ned;Porites-columnnar;V ermetidae;Homotrema; BRYO	bioerosion;encrusta tion - multilayered	5Y 8/1;N9	bryozoans and Homotrema. Microbialite massive to dendritic, structureless.
6.5											
7.0	Core recovered	6R-1			FRW-CorAlgMicrobBound			Coralline algae;Porites-undetermi ned;Porites-columnnar	bioerosion;encrusta tion - multilayered	5Y 8/1;N9	Pieces of boundstone of columnar Porites and thick algal crusts. Microbialite massive structureless.
7.5											
8.0	Core recovered				FRW-CorAlgBound			Coralline algae;Porites-columnnar	bioerosion;encrusta tion - multilayered	5Y 8/1;N9	Pieces of boundstone of columnar Porites and thin algal crusts. Thin microbialite.
8.5	Core recovered	7R-1			Mixed-carb/vol	◆					Porphyritic basalt with aphanitic groundmass. Large up to cm-sized coalesced bubbles.
9.0						+					

VCD legend

Core recovery

- Core recovered
- No recovery
- Wash bore
- High disturbance

Facies

- FRW-CorAlgBound
- FRW-CorAlgMicrobBound
- FRW-MicrobAlgBound
- FRW-MicrobBound
- FRW-AlgBound
- RDST/FLST-Rhodoliths
- DET-Consolidated
- DET-Unconsolidated
- Mixed-carb/vol
- VOL-Clast
- VOL-Basalt
- FALL

IODP Samples

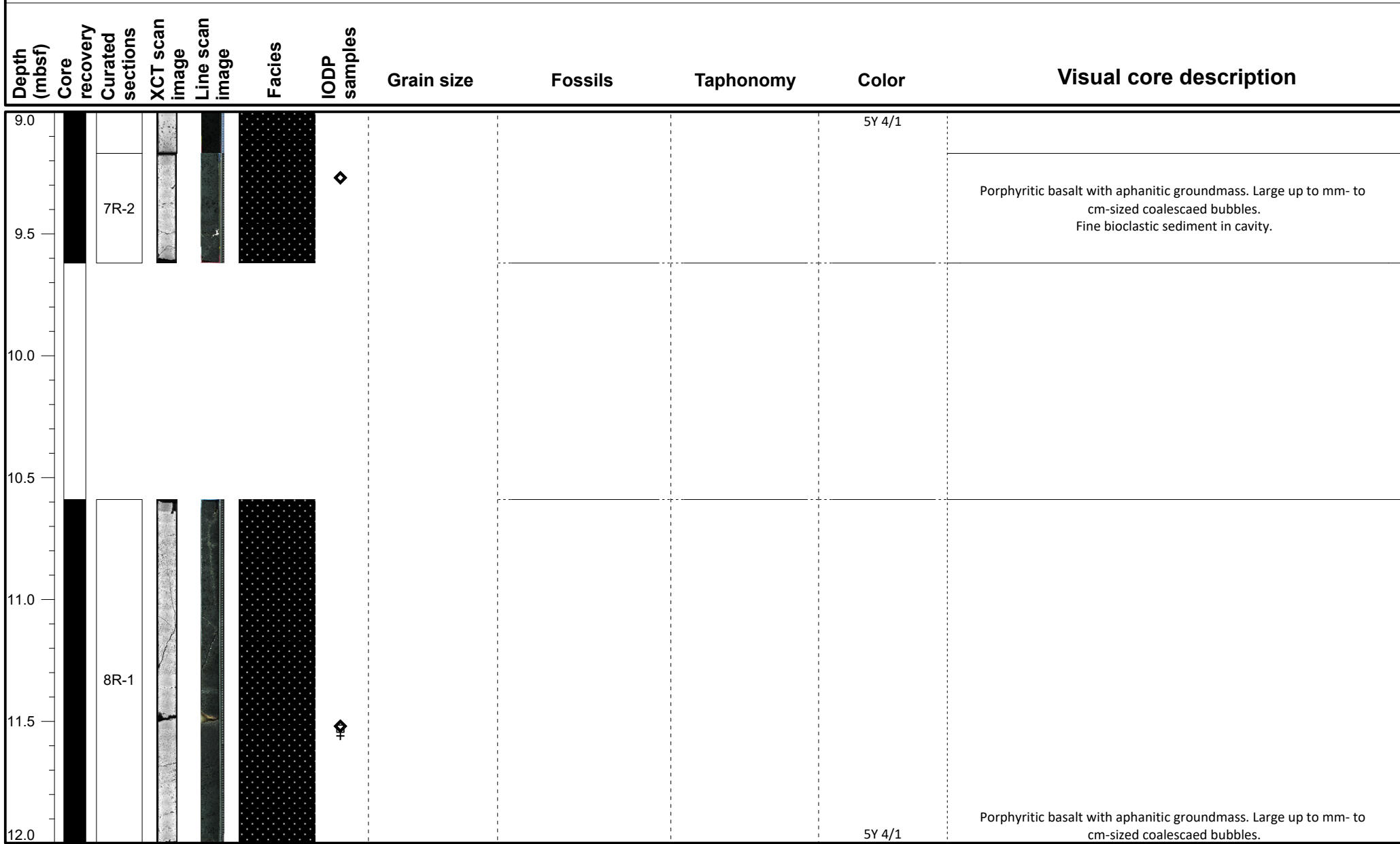
- Dating
- GEOCHEM
- IWRH
- MAD/PW
- PMAG

IODP Expedition 389 VCD

Site: M0110B

Hole M0110B

Region: Kawaihae
Water Depth: 144.8 m



VCD legend

Core recovery

- Core recovered
- No recovery
- Wash bore
- High disturbance

Facies

- FRW-CorAlgBound
- FRW-AlgBound
- RDST/FLST-Rhodoliths
- FRW-MicrobAlgBound
- DET-Consolidated
- DET-Unconsolidated
- Mixed-carb/vol
- VOL-Clast
- VOL-Basalt
- FALL

IODP Samples

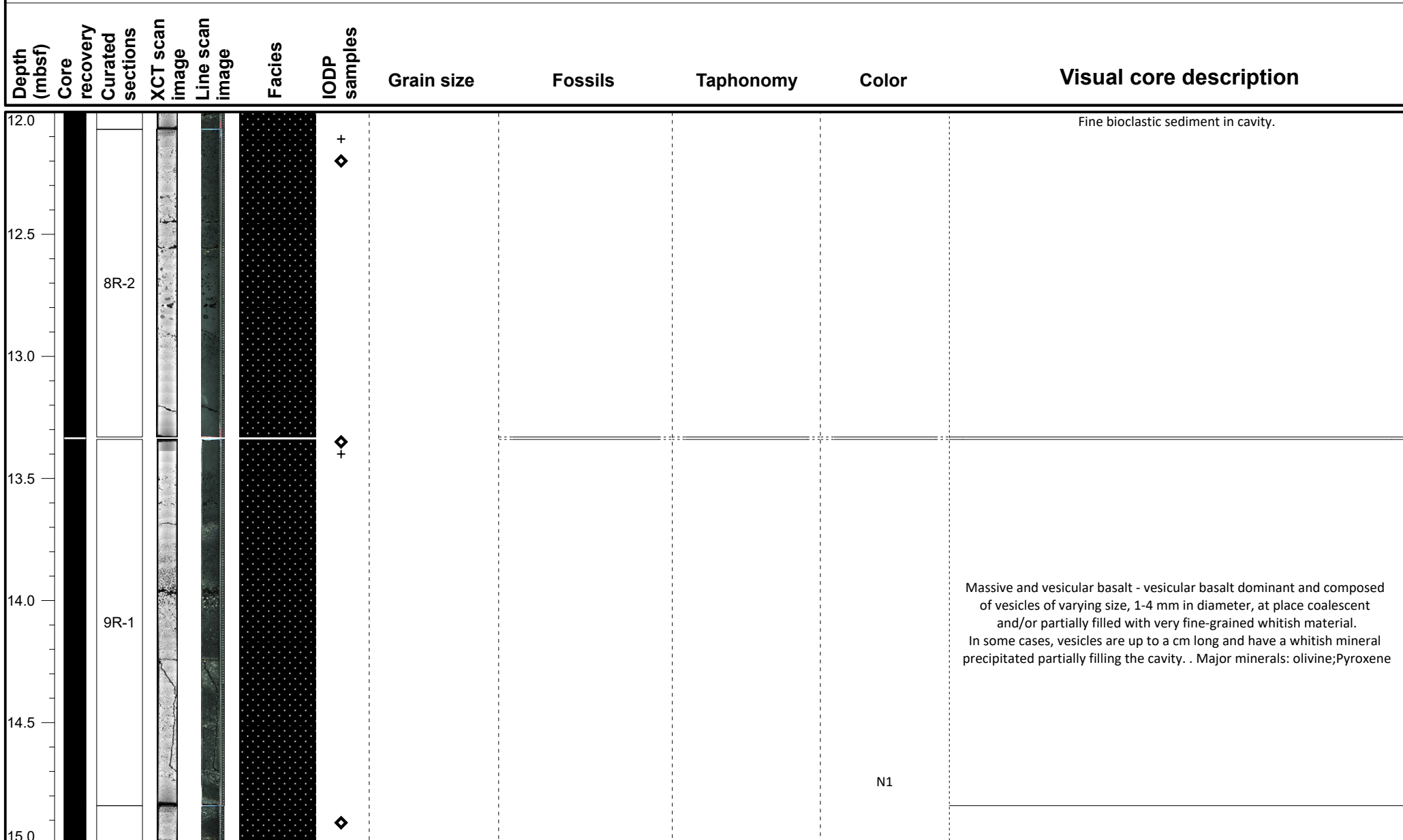
- Dating
- MAD/PW
- GEOCHEM
- PMAG
- IWRH

IODP Expedition 389 VCD

Site: M0110B

Hole M0110B

Region: Kawaihae
Water Depth: 144.8 m



VCD legend

Core recovery

- Core recovered
- No recovery
- Wash bore
- High disturbance

Facies

- FRW-CorAlgBound
- FRW-AlgBound
- FRW-CorAlgMicrobBound
- RDST/FLST-Rhodoliths
- FRW-MicrobAlgBound
- DET-Consolidated
- FRW-MicrobBound
- DET-Unconsolidated
- Mixed-carb/vol
- VOL-Clast
- VOL-Basalt
- FALL

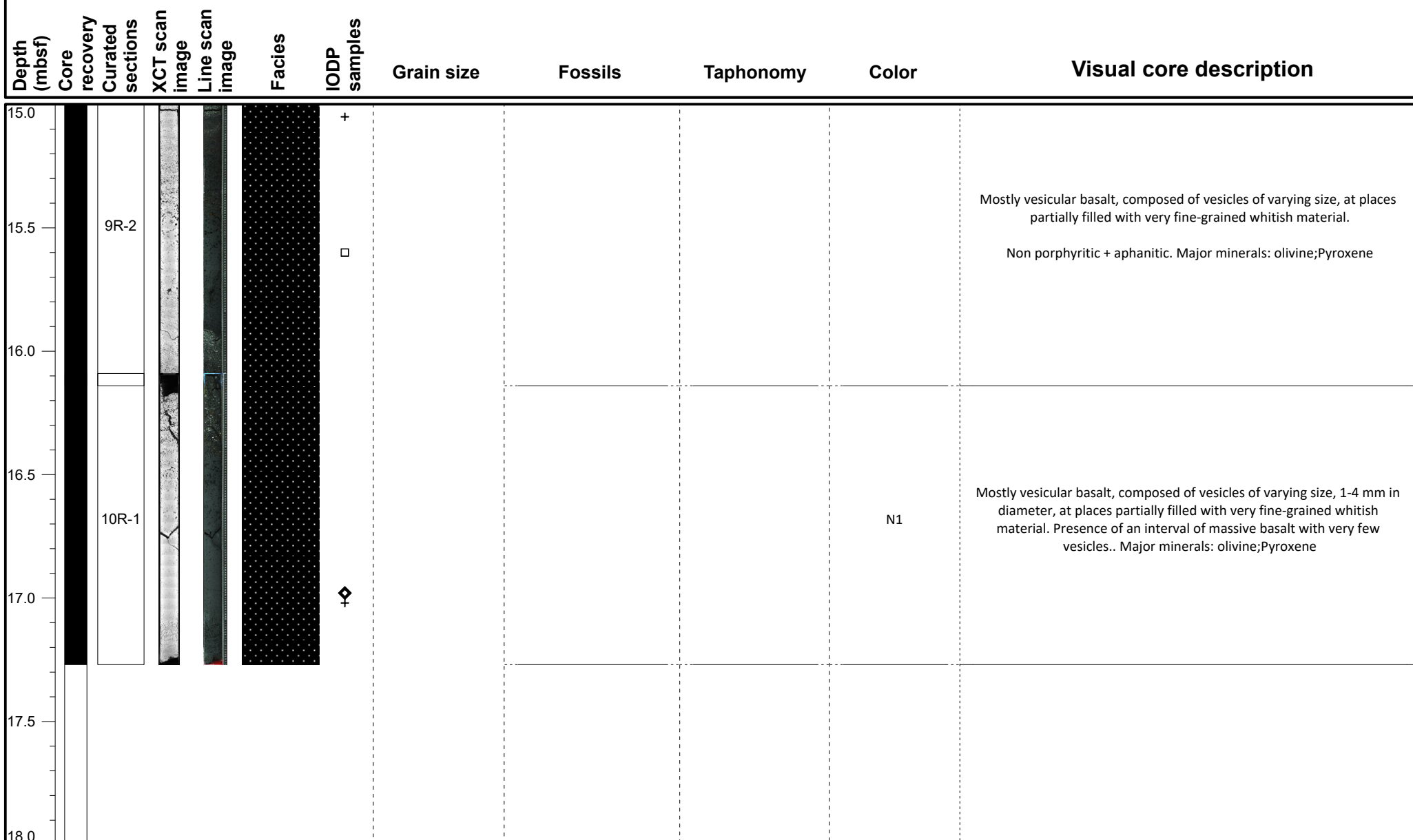
IODP Samples

- Dating
- GEOCHEM
- IWRH
- MAD/PW
- PMAG

IODP Expedition 389 VCD


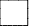


Site: M0110B

Hole M0110B













Region: Kawaihae
Water Depth: 144.8 m

VCD legend






Core recovery

-  Core recovered
-  No recovery
-  Wash bore
-  High disturbance

Facies

-  FRW-CorAlgBound
-  FRW-CorAlgMicrobBound
-  FRW-MicrobAlgBound
-  FRW-MicrobBound
-  FRW-AlgBound
-  RDST/FLST-Rhodoliths
-  DET-Consolidated
-  DET-Unconsolidated
-  Mixed-carb/vol
-  VOL-Clast
-  VOL-Basalt
-  FALL

IODP Samples

-  Dating
-  GEOCHEM
-  IWRH
-  MAD/PW
-  PMAG