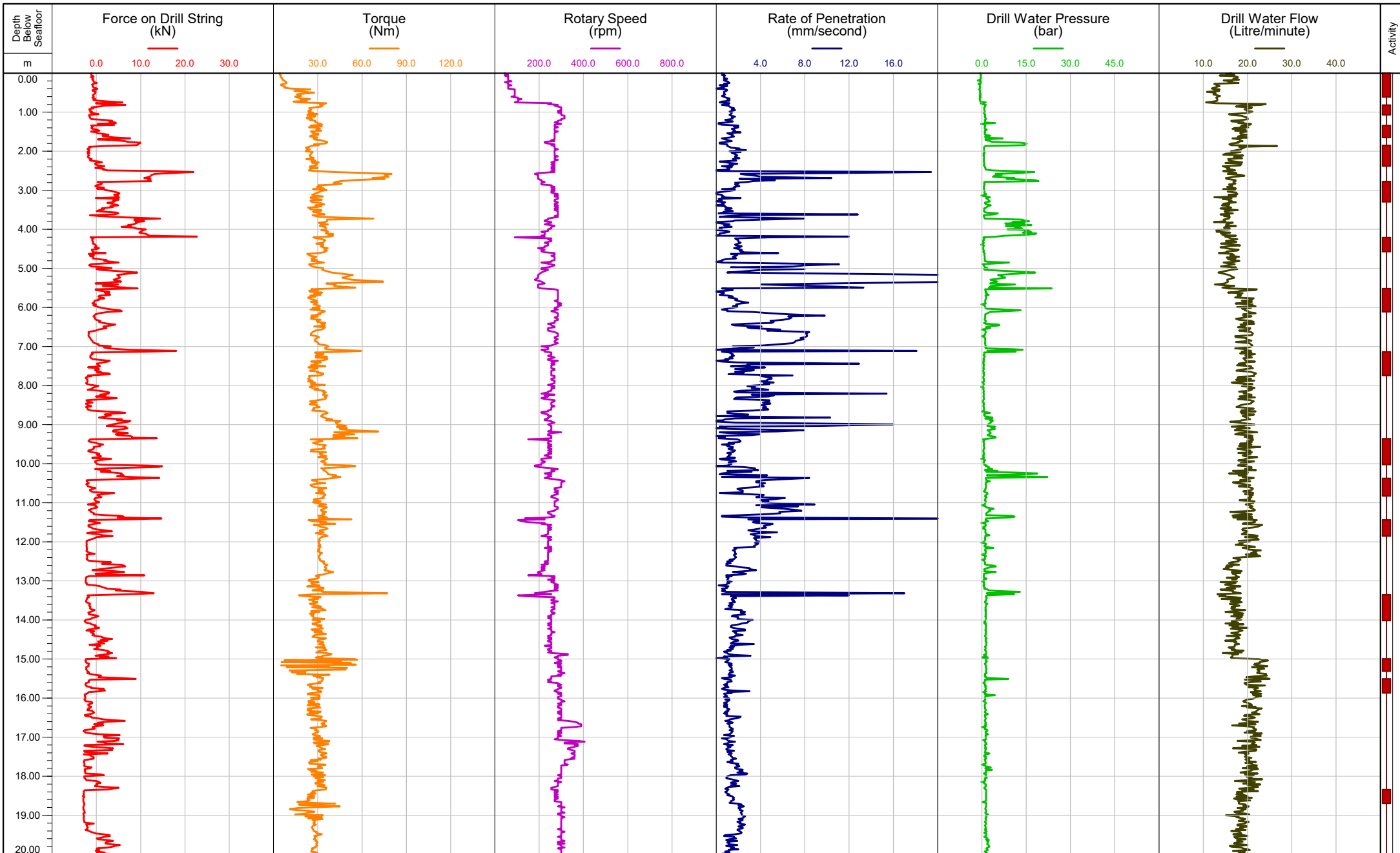


PROD DRILLING PARAMETERS



Client: ECORD Science Operator (ESO)
 Project: IODP Exp 389: Hawaiian Drowned Reefs
 Site: Hilo
 Project No: 16959 RP-A

Borehole Date: 11-Oct-2023 to 13-Oct-2023
 Water Depth: 404.5m (MSL)
 File Status: Preliminary

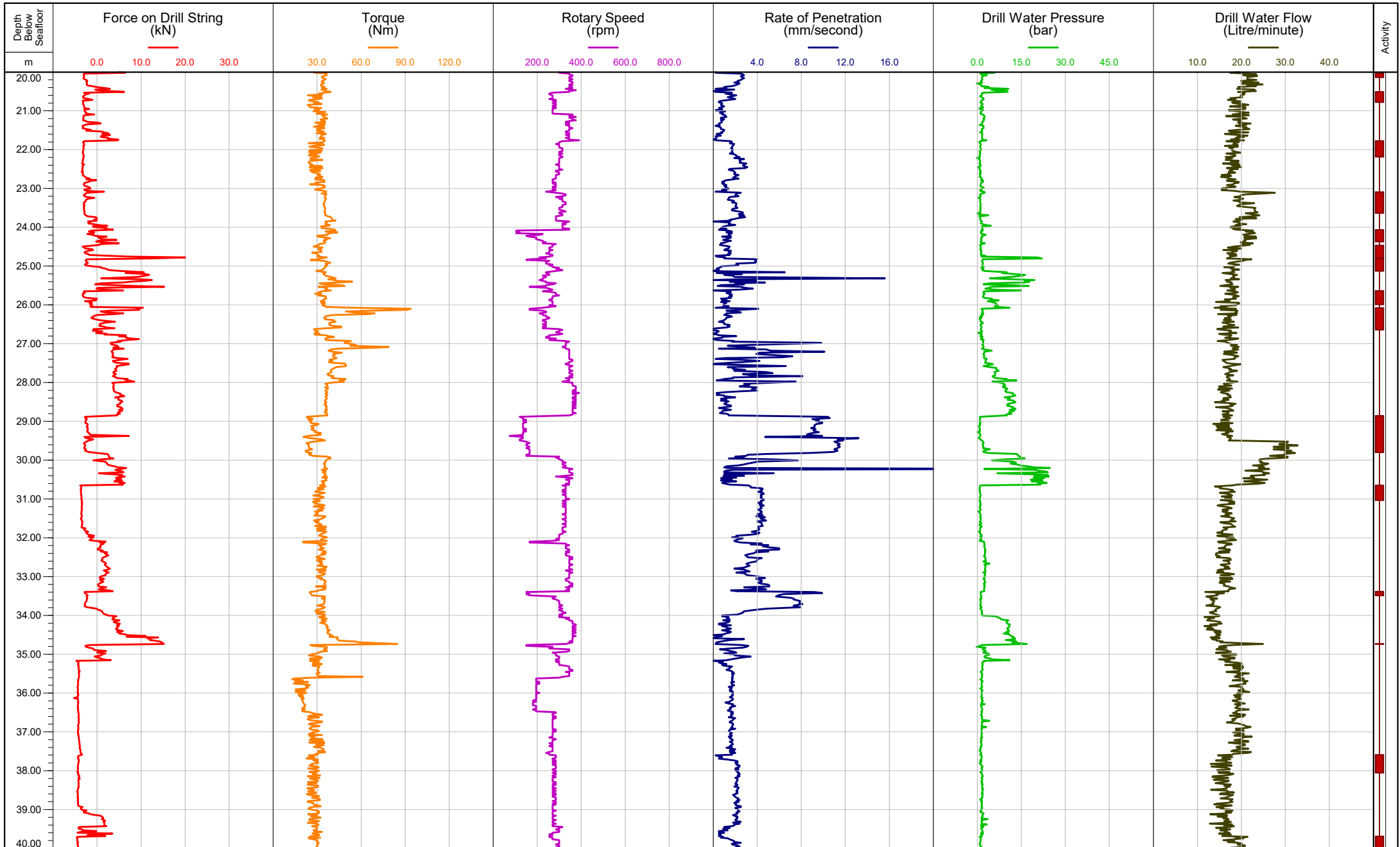
Location Coordinates: E:296919.6m N:2199040.4m
 Geodetic Datum / Projection: WGS84 / UTM Zone 5N

■ Wash Bore
■ Rotary Core (RC)
■ Piston Sample (PS)

■ Casing
Data where washbore or sampling within virgin ground is presented. Data for CPT is not presented.
Tail of activity symbol indicates unrecovered portion of sample.



PROD DRILLING PARAMETERS



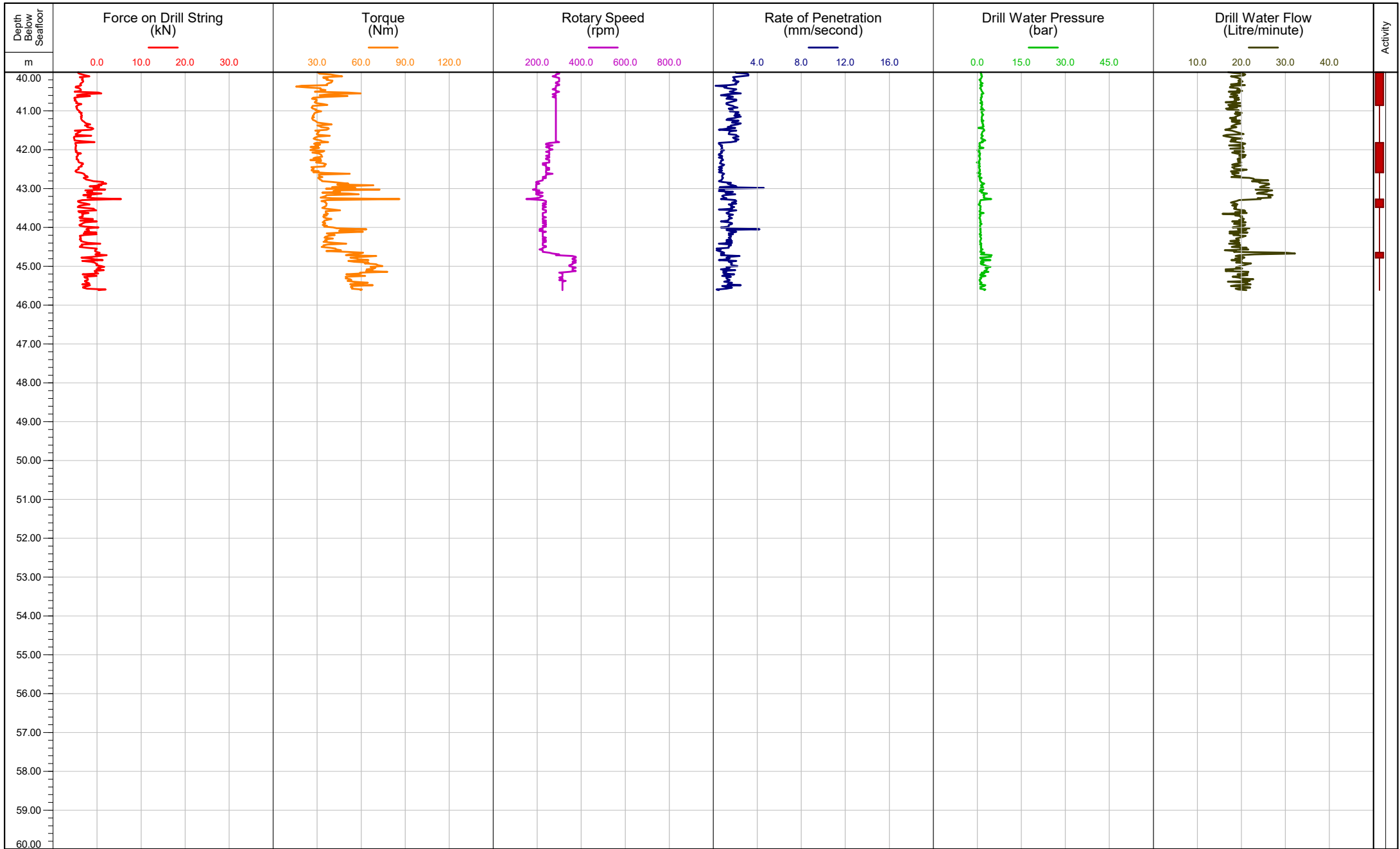
Client: ECORD Science Operator (ESO)	Borehole Date: 11-Oct-2023 to 13-Oct-2023	Location Coordinates: E:296919.6m N:2199040.4m	
Project: IODP Exp 389: Hawaiian Drowned Reefs	Water Depth: 404.5m (MSL)	Geodetic Datum / Projection: WGS84 / UTM Zone 5N	
Site: Hilo	File Status: Preliminary		
Project No: 16959 RP-A			

■ Wash Bore
■ Rotary Core (RC)
■ Piston Sample (PS)

■ Casing
Data where washbore or sampling within virgin ground is presented. Data for CPT is not presented.
Tail of activity symbol indicates unrecovered portion of sample.



PROD DRILLING PARAMETERS



Client: ECORD Science Operator (ESO)
 Project: IODP Exp 389: Hawaiian Drowned Reefs
 Site: Hilo
 Project No: 16959 RP-A

Borehole Date: 11-Oct-2023 to 13-Oct-2023
 Water Depth: 404.5m (MSL)
 File Status: Preliminary

Location Coordinates: E:296919.6m N:2199040.4m
 Geodetic Datum / Projection: WGS84 / UTM Zone 5N

■ Wash Bore
■ Rotary Core (RC)
■ Piston Sample (PS)
■ Casing
Data where washbore or sampling within virgin ground is presented. Data for CPT is not presented. Tail of activity symbol indicates unrecovered portion of sample.

