

| CM Scale | Drawing/Annotation | Lithology | Logged By: | Date: |
|----------|------------------------|-----------|--|--------|
| | | | PD | 3/2/22 |
| | | | Comments | |
| 0 | chest -6 -14 | basalt | 5-8% vesicles subrounded/ angular 1 ^{1/2} /mm aphyric fine grained fresh O.L. | |
| 2 | | | | |
| 4 | | | | |
| 6 | | | | |
| 8 | | | | |
| 10 | | | | |
| 12 | | | | |
| 14 | | | | |
| 16 | | | | |
| 18 | | | | |
| 20 | | | | |
| 22 | | | | |
| 24 | | | | |
| 26 | | | | |
| 28 | | | | |
| 30 | | | | |
| 32 | | | | |
| 34 | | | | |
| 36 | | | | |
| 38 | | | | |
| 40 | | | | |
| 42 | | | | |
| 44 | | | | |
| 46 | | | | |
| 48 | | | | |
| 50 | | | | |
| 52 | | | | |
| 54 | | | | |
| 56 | | | | |
| 58 | | | | |
| 60 | | | | |
| 62 | | | | |
| 64 | | | | |
| 66 | | | | |
| 68 | | | | |
| 70 | | | | |
| 72 | | | | |
| 74 | | | | |
| 76 | | | | |
| 78 | | | | |
| 80 | | | | |
| 82 | | | | |
| 84 | | | | |
| 86 | | | | |
| 88 | | | | |
| 90 | | | | |
| 92 | | | | |
| 94 | | | | |
| 96 | | | | |
| 98 | | | | |
| 100 | | | | |
| 102 | | | | |
| 104 | | | | |
| 106 | | | | |
| 108 | | | | |
| 110 | | | | |
| 112 | | | | |
| 114 | | | | |
| 116 | | | | |
| 118 | | | | |
| 120 | | | | |
| 122 | | | | |
| 124 | | | | |
| 126 | | | | |
| 128 | | | | |
| 130 | | | | |
| 132 | | | | |
| 134 | | | | |
| 136 | | | | |
| 138 | | | | |
| 140 | | | | |
| 142 | | | | |
| 144 | | | | |
| 146 | | | | |
| 148 | | | | |
| 150 | | | | |
| 152 | | | | |

Unit 1

No core 44 (empty)

392-U1580A-45R-1-A |

| CM Scale | Drawing/Annotation | Lithology | Logged By: | Date: |
|----------|---|-----------|--|--------|
| | | | PD | 3/2/22 |
| | | | Comments | |
| 0-18 | ves. filled w/ calcite | | 3-5% vesicles, sub-rounded/ angular 2/1mm fine med. grained aphyric slightly cpx-phyric | |
| 19-32 | vein | | 1% vesicles, pyrite-filled 1.0mm same texture | |
| 32-44 | vein | | | |
| 44-49 | vein | | | |
| 49-125 | | basalt | fresh | |
| 125-130 | | | TS behaves weird while heated XRD - sample taken just below beside to level for hydrophobic minerals | |
| 130-148 | TS of transition intra-aphanitic to normal XRD | | → aphanitic w/ cavities of calcite ↓ small 2-4mm glomerocrysts/xenocrysts liths ← 1% total plagiocl.? | |
| 148-152 | | | | |

Unit 1

| CM Scale | Drawing/Annotation | Lithology | Logged By: | Date: |
|----------|---|-----------|------------|----------------------------------|
| | | | FD | 3/2/22 |
| | | | Comments | |
| 0-10 | 3-5% ves. 2/1mm not filled | | | |
| 10-22 | 5-8% angular calcite-filled vesicles 2/15mm | | | fine grained |
| 22-24 | 21 vein 21 | | | slightly cpx aphyric |
| 35-44 | 100% vesicular | basalt | | glauco-crysts up to 6mm 4% total |
| 44-52 | 44 vein 52 | | | fresh |
| 70-72 | TSB + 1CP | | | |
| 84-100 | 3-5% vesicular 1.5/1 not filled 1mm angular | | | good for PC samples |

Unit 7

| CM Scale | Drawing/Annotation | Lithology | Logged By: | Date: |
|----------|---|-----------|-------------------------------|------------|
| | | | PD | 3/2/22 |
| | | | Comments | |
| 0-42 | 5-8% vesicles sub-rounded/ angular 2/mm | | sparse glomerular 2-8mm | fresh |
| 42-44 | X | | | |
| 44-50 | pipe up to vesicles 4.5cm | | fine grained | |
| 50-60 | | | aphanitic | |
| 60-64 | non vesicular | | | End Unit 7 |
| 64-76 | TSB from baked sediment chert baked sed | | | |
| 76-152 | | | | |

slightly
cpx-phy

fresh

End Unit 7

PAI

| CM Scale | Drawing/Annotation | Lithology | Logged By: | Date: |
|----------|--|--------------|------------|----------|
| | | | Comments | |
| 0-14 | | 2.5YR 7/1 | | |
| 14-16 | | | | 17 |
| 16-42 | <p>Chert clast</p> <p>Chert clast</p> <p>4.5 Chert lam.</p> | Silt | | |
| 42-58 | | | | 57.5 |
| 58-62 | Faulted Chert (Microf. lam) | 2.5YR (7/1) | | 62.5 |
| 62-70 | Microfossil(?) | Silt | | |
| 70-78 | | | | 78 |
| 78-92 | | | | } Saled? |
| 92-94 | | 2.5YR (7/1) | | |
| 94-96 | | | | 92 |
| 96-102 | | | | 96 |
| 102-104 | | | | 102 |
| 104-110 | Same as CC | | | |
| 110-152 | | | | |

Altered basal

Unit 2

Unit 2

Logged By:

PD

Date:

3/2/22

Drawing/Annotation

Lithology

Comments

CM Scale

0
-2
-4
-6
-8
-10
-12
-14
-16
-18
-20
-22
-24
-26
-28
-30
-32
-34
-36
-38
-40
-42
-44
-46
-48
-50
-52
-54
-56
-58
-60
-62
-64
-66
-68
-70
-72
-74
-76
-78
-80
-82
-84
-86
-88
-90
-92
-94
-96
-98
-100
-102
-104
-106
-108
-110
-112
-114
-116
-118
-120
-122
-124
-126
-128
-130
-132
-134
-136
-138
-140
-142
-144
-146
-148
-150
-152

highly fragmented

basalt

fine-grained

5% vesicles

~~fresh~~

3/2mm round

moderately to slightly altered
~~to 2m~~

fragmentation
highly fragmented probably not caused by brecciation but result of drilling disturbance

~ 1% Siot. Fe!

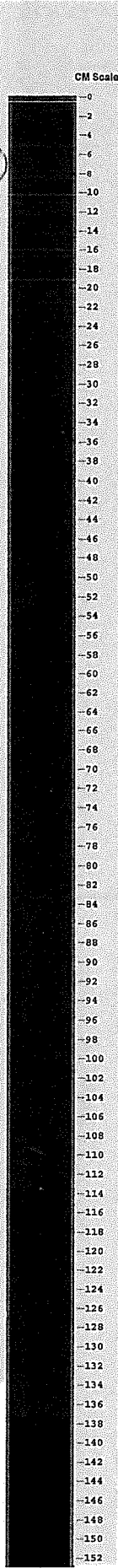
↑
could not be confirmed in TS

PAL

Unit 2

392

392-U1580A-47R-1-A |




| Drawing/Annotation | Lithology | Comments |
|---|---------------|---|
| | <p>basalt</p> | <p>fine-grained, massive no vesicles slightly phytic = 1% feldspar 4% cpx 1% biotite</p> <p>veins filled with clay and many clay pyrite flakes</p> |
| <p>slightly altered non vesicular</p> | | <div style="border: 1px solid black; padding: 10px; transform: rotate(-10deg);"> <p>good you PC sample</p> </div> |

Unit 2

CM Scale

0
2
4
6
8
10
12
14
16
18
20
22
24
26
28
30
32
34
36
38
40
42
44
46
48
50
52
54
56
58
60
62
64
66
68
70
72
74
76
78
80
82
84
86
88
90
92
94
96
98
100
102
104
106
108
110
112
114
116
118
120
122
124
126
128
130
132
134
136
138
140
142
144
146
148
150
152

| Drawing/Annotation | Lithology | Logged By: | Date: |
|---|-----------|------------|---|
| Comments | | | |
|  | Basalt | | Same lithology and alteration state like on 47R-1 |
| <input type="checkbox"/> | | | TSB + ICP (representative of Unit 2) |

continuation of Unit 2

CM Scale

0
2
4
6
8
10
12
14
16
18
20
22
24
26
28
30
32
34
36
38
40
42
44
46
48
50
52
54
56
58
60
62
64
66
68
70
72
74
76
78
80
82
84
86
88
90
92
94
96
98
100
102
104
106
108
110
112
114
116
118
120
122
124
126
128
130
132
134
136
138
140
142
144
146
148
150
152

| Drawing/Annotation | Lithology | Comments |
|---|---------------|---|
| <p>22</p> <p>vein w/ calcite & pyrite</p> <p>75</p> <p>medium grained</p> <p>oo → a few cavities w/ calcite</p> | <p>basalt</p> | <p>Logged By: JG + PD</p> <p>Date: 3/3/22</p> <p>If we consider that dark patches as cpx microphenocrysts then we have to make the ground glass to moderate (since these patches are slightly larger than in 42R25) → some (2-3) feldspars</p> <p>- still largely non-vesicular</p> <p>if vesicles appear they are filled with calcite (21%)</p> <p>dark light gray</p> <p>alteration slight fresh</p> <p>sparsely phytic (some large cpx + feldspars)</p> <p>- fld 1% 1.5/1mm - cpx 3% 2/1mm - biotite 2%</p> <p>plagiocl glomerocrysts up to 1mm</p> |

Unit 2

| CM Scale | Drawing/Annotation | Lithology | Logged By: | Date: | |
|----------|-----------------------|-----------|------------|--------|--|
| | | | Comments | | |
| 0 | <p>same as sec. 1</p> | basalt | GG + PD | 3/3/22 | |
| -2 | | | | | <p>fresh</p> <p>plag + ol? glomerocrysts up to 1cm</p> |
| -4 | | | | | |
| -6 | | | | | |
| -8 | | | | | |
| -10 | | | | | |
| -12 | | | | | |
| -14 | | | | | |
| -16 | | | | | |
| -18 | | | | | |
| -20 | | | | | |
| -22 | | | | | |
| -24 | | | | | |
| -26 | | | | | |
| -28 | | | | | |
| -30 | <p>medium-grained</p> | | | | |
| -32 | | | | | |
| -34 | | | | | |
| -36 | | | | | |
| -38 | | | | | |
| -40 | | | | | |
| -42 | | | | | |
| -44 | | | | | |
| -46 | | | | | |
| -48 | | | | | |
| -50 | | | | | |
| -52 | | | | | |
| -54 | | | | | |
| -56 | | | | | |
| -58 | | | | | |
| -60 | | | | | |
| -62 | | | | | |
| -64 | | | | | |
| -66 | | | | | |
| -68 | | | | | |
| -70 | | | | | |
| -72 | | | | | |
| -74 | | | | | |
| -76 | | | | | |
| -78 | | | | | |
| -80 | | | | | |
| -82 | | | | | |
| -84 | | | | | |
| -86 | | | | | |
| -88 | | | | | |
| -90 | | | | | |
| -92 | | | | | |
| -94 | | | | | |
| -96 | | | | | |
| -98 | | | | | |
| -100 | | | | | |
| -102 | | | | | |
| -104 | | | | | |
| -106 | | | | | |
| -108 | | | | | |
| -110 | | | | | |
| -112 | | | | | |
| -114 | | | | | |
| -116 | | | | | |
| -118 | | | | | |
| -120 | | | | | |
| -122 | | | | | |
| -124 | | | | | |
| -126 | | | | | |
| -128 | | | | | |
| -130 | | | | | |
| -132 | | | | | |
| -134 | | | | | |
| -136 | | | | | |
| -138 | | | | | |
| -140 | | | | | |
| -142 | | | | | |
| -144 | | | | | |
| -146 | | | | | |
| -148 | | | | | |
| -150 | | | | | |
| -152 | | | | | |

Unit 2

392

392-U1580A-48R-3-A |

| CM Scale | Drawing/Annotation | Lithology | Logged By: | Date: | |
|----------|--------------------|-----------|------------|--------|--|
| | | | Comments | | |
| 0 | | | JGJ PD | 3/3/22 | |
| -2 | | | | | |
| -4 | | | | | |
| -6 | | | | | |
| -8 | | | | | |
| -10 | | | | | |
| -12 | | | | | |
| -14 | | | | | |
| -16 | | | | | |
| -18 | | | | | |
| -20 | | | | | |
| -22 | | | | | |
| -24 | | | | | |
| -26 | | | | | |
| -28 | | | | | |
| -30 | | | | | |
| -32 | | | | | |
| -34 | | | | | |
| -36 | | | | | |
| -38 | | | | | |
| -40 | | | | | |
| -42 | | | | | |
| -44 | | | | | |
| -46 | | | | | |
| -48 | | | | | |
| -50 | | | | | |
| -52 | | | | | |
| -54 | | | | | |
| -56 | | | | | |
| -58 | | | | | |
| -60 | | | | | |
| -62 | | | | | |
| -64 | | | | | |
| -66 | | | | | |
| -68 | | | | | |
| -70 | | | | | |
| -72 | | | | | |
| -74 | | | | | |
| -76 | | | | | |
| -78 | | | | | |
| -80 | | | | | |
| -82 | | | | | |
| -84 | | | | | |
| -86 | | | | | |
| -88 | | | | | |
| -90 | | | | | |
| -92 | | | | | |
| -94 | | | | | |
| -96 | | | | | |
| -98 | | | | | |
| -100 | | | | | |
| -102 | | | | | |
| -104 | | | | | |
| -106 | | | | | |
| -108 | | | | | |
| -110 | | | | | |
| -112 | | | | | |
| -114 | | | | | |
| -116 | | | | | |
| -118 | | | | | |
| -120 | | | | | |
| -122 | | | | | |
| -124 | | | | | |
| -126 | | | | | |
| -128 | | | | | |
| -130 | | | | | |
| -132 | | | | | |
| -134 | | | | | |
| -136 | | | | | |
| -138 | | | | | |
| -140 | | | | | |
| -142 | | | | | |
| -144 | | | | | |
| -146 | | | | | |
| -148 | | | | | |
| -150 | | | | | |
| -152 | | | | | |

fresh

plag + ol
glomerocrysts
up to 1cm

34
vein w/ calcite
39
medium grained

7-54 cm sparsely vesicular

54

same
mineralogy

82 cm
fine grained
88

cpx 37% 1/0.5mm
micro phenos

CM Scale

0
2
4
6
8
10
12
14
16
18
20
22
24
26
28
30
32
34
36
38
40
42
44
46
48
50
52
54
56
58
60
62
64
66
68
70
72
74
76
78
80
82
84
86
88
90
92
94
96
98
100
102
104
106
108
110
112
114
116
118
120
122
124
126
128
130
132
134
136
138
140
142
144
146
148
150
152

Drawing/Annotation

Lithology

Logged By:

JG + PD

Date:

3/3/22

Comments

fine grained

3% cpx 5/0.5

turned piece around 110 degrees
- limit-contact is now
(... next side)

Re-merged new section
photo (e-mail to

Corbyn + send core descriptions
on 7/13/22

Unit 2

Unit 3

<66-68
cm
section

up to hem
pipe vesicle?
60-65 cm

} sparsely vesicular

2/mm
round
100% filled

(66-68 cm)

| CM Scale | Drawing/Annotation | Lithology | Logged By: | Date: |
|----------|-------------------------|-----------|------------|--------|
| | | | PD | 3/3/22 |
| | | | Comments | |
| 0 | | | | |
| 2 | | | | |
| 4 | | | | |
| 6 | | | | |
| 8 | | | | |
| 10 | | | | |
| 12 | | | | |
| 14 | | | | |
| 16 | | | | |
| 18 | | | | |
| 20 | | | | |
| 22 | 9 vein w/ Calcite | | | |
| 24 | 22 | | | |
| 26 | | | | |
| 28 | | | | |
| 30 | | | | |
| 32 | | | | |
| 34 | | | | |
| 36 | TS + HCP | | | |
| 38 | | | | |
| 40 | | | | |
| 42 | | | | |
| 44 | | | | |
| 46 | | | | |
| 48 | | | | |
| 50 | | | | |
| 52 | | | | |
| 54 | | | | |
| 56 | | | | |
| 58 | | | | |
| 60 | | | | |
| 62 | 61 vein 62 | | | |
| 64 | | | | |
| 66 | | | | |
| 68 | | | | |
| 70 | | | | |
| 72 | | | | |
| 74 | | | | |
| 76 | | | | |
| 78 | | | | |
| 80 | 78 | | | |
| 82 | | | | |
| 84 | | | | |
| 86 | | | | |
| 88 | | | | |
| 90 | | | | |
| 92 | | | | |
| 94 | | | | |
| 96 | | | | |
| 98 | | | | |
| 100 | | | | |
| 102 | | | | |
| 104 | | | | |
| 106 | | | | |
| 108 | | | | |
| 110 | | | | |
| 112 | | | | |
| 114 | | | | |
| 116 | | | | |
| 118 | | | | |
| 120 | | | | |
| 122 | | | | |
| 124 | | | | |
| 126 | | | | |
| 128 | | | | |
| 130 | | | | |
| 132 | | | | |
| 134 | | | | |
| 136 | | | | |
| 138 | | | | |
| 140 | | | | |
| 142 | | | | |
| 144 | | | | |
| 146 | | | | |
| 148 | | | | |
| 150 | | | | |
| 152 | | | | |

Logged By: PD
Date: 3/3/22

9
vein w/
Calcite
22

TS + HCP

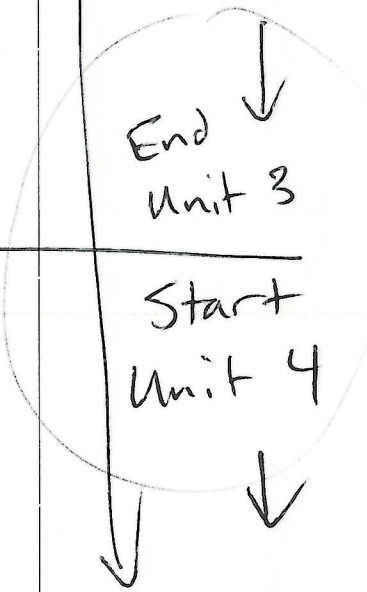
61
vein
62

78

fresh
fine grained
aphyric
sparse
plag glomerocrysts
up to 8mm

65
aphanitic
chilled margin III
78

90 fine grained
20% cpx phenos
2/1mm
110



Logged By:

PD

Date:

3/3/22

Drawing/Annotation

Lithology

Comments

CM Scale

0
-2
-4
-6
-8
-10
-12
-14
-16
-18
-20
-22
-24
-26
-28
-30
-32
-34
-36
-38
-40
-42
-44
-46
-48
-50
-52
-54
-56
-58
-60
-62
-64
-66
-68
-70
-72
-74
-76
-78
-80
-82
-84
-86
-88
-90
-92
-94
-96
-98
-100
-102
-104
-106
-108
-110
-112
-114
-116
-118
-120
-122
-124
-126
-128
-130
-132
-134
-136
-138
-140
-142
-144
-146
-148
-150
-152

med.
grained

base 17

3-5% cpx phenos
2/mm

126

~~back~~ baked
Calcite

End
Unit 4

| Drawing/Annotation | Lithology | Logged By: | Date: |
|---------------------|-----------|---|--|
| | | PD | 3/3/22 |
| Comments Unit 5 | | | |
| sed: sandstone 6 | | 3-5% clay spartz 1-3% plag glomerocrysts up to 5mm med. grained | pseudo morphs - ol? 2/1mm sepechite? |

Unit
5
↓

CM Scale
0
-2
-4
-6
-8
-10
-12
-14
-16
-18
-20
-22
-24
-26
-28
-30
-32
-34
-36
-38
-40
-42
-44
-46
-48
-50
-52
-54
-56
-58
-60
-62
-64
-66
-68
-70
-72
-74
-76
-78
-80
-82
-84
-86
-88
-90
-92
-94
-96
-98
-100
-102
-104
-106
-108
-110
-112
-114
-116
-118
-120
-122
-124
-126
-128
-130
-132
-134
-136
-138
-140
-142
-144
-146
-148
-150
-152

CM Scale

- 0
- 2
- 4
- 6
- 8
- 10
- 12
- 14
- 16
- 18
- 20
- 22
- 24
- 26
- 28
- 30
- 32
- 34
- 36
- 38
- 40
- 42
- 44
- 46
- 48
- 50
- 52
- 54
- 56
- 58
- 60
- 62
- 64
- 66
- 68
- 70
- 72
- 74
- 76
- 78
- 80
- 82
- 84
- 86
- 88
- 90
- 92
- 94
- 96
- 98
- 100
- 102
- 104
- 106
- 108
- 110
- 112
- 114
- 116
- 118
- 120
- 122
- 124
- 126
- 128
- 130
- 132
- 134
- 136
- 138
- 140
- 142
- 144
- 146
- 148
- 150
- 152

| Drawing/Annotation | Lithology | Logged By: | Date: |
|--------------------|-----------|-------------------------|--------|
| | | PO | 3/3/22 |
| Comments | | | |
| | | <p>Same as 47-1</p> | |

| CM Scale | Drawing/Annotation | Lithology | Logged By: | Date: |
|----------|--------------------|-----------|------------|--------|
| | | | PD | 3/3/22 |
| | | | Comments | |
| 0 | | | | |
| -2 | | | | |
| -4 | | | | |
| -6 | | | | |
| -8 | | | | |
| -10 | | | | |
| -12 | | | | |
| -14 | | | | |
| -16 | 16 | | | |
| -18 | | | | |
| -20 | | | | |
| -22 | | | | |
| -24 | | | | |
| -26 | | | | |
| -28 | | | | |
| -30 | | | | |
| -32 | | | | |
| -34 | | | | |
| -36 | 36 | | | |
| -38 | | | | |
| -40 | | | | |
| -42 | | | | |
| -44 | | | | |
| -46 | | | | |
| -48 | | | | |
| -50 | | | | |
| -52 | | | | |
| -54 | | | | |
| -56 | 56 | | | |
| -58 | | | | |
| -60 | | | | |
| -62 | | | | |
| -64 | | | | |
| -66 | | | | |
| -68 | | | | |
| -70 | | | | |
| -72 | | | | |
| -74 | | | | |
| -76 | | | | |
| -78 | 77 | | | |
| -80 | | | | |
| -82 | | | | |
| -84 | | | | |
| -86 | | | | |
| -88 | | | | |
| -90 | | | | |
| -92 | | | | |
| -94 | | | | |
| -96 | | | | |
| -98 | | | | |
| -100 | | | | |
| -102 | | | | |
| -104 | | | | |
| -106 | | | | |
| -108 | | | | |
| -110 | | | | |
| -112 | | | | |
| -114 | 113 | | | |
| -116 | | | | |
| -118 | | | | |
| -120 | | | | |
| -122 | 121 | | | |
| -124 | | | | |
| -126 | | | | |
| -128 | | | | |
| -130 | | | | |
| -132 | | | | |
| -134 | | | | |
| -136 | | | | |
| -138 | | | | |
| -140 | | | | |
| -142 | | | | |
| -144 | | | | |
| -146 | | | | |
| -148 | | | | |
| -150 | | | | |
| -152 | | | | |

16
Vein filled
with clay

36

56
Vein network
vein filled #
with clay

77

113
fine grained

121

same
as
49-1

CM Scale

- 0
- 2
- 4
- 6
- 8
- 10
- 12
- 14
- 16
- 18
- 20
- 22
- 24
- 26
- 28
- 30
- 32
- 34
- 36
- 38
- 40
- 42
- 44
- 46
- 48
- 50
- 52
- 54
- 56
- 58
- 60
- 62
- 64
- 66
- 68
- 70
- 72
- 74
- 76
- 78
- 80
- 82
- 84
- 86
- 88
- 90
- 92
- 94
- 96
- 98
- 100
- 102
- 104
- 106
- 108
- 110
- 112
- 114
- 116
- 118
- 120
- 122
- 124
- 126
- 128
- 130
- 132
- 134
- 136
- 138
- 140
- 142
- 144
- 146
- 148
- 150
- 152

| Drawing/Annotation | Lithology | Logged By: | Date: |
|--------------------|-----------|-----------------|--------|
| | | PD | 3/3/22 |
| Comments | | | |
| | | Same as 49-1 | |

| CM Scale | Drawing/Annotation | Lithology | Logged By: | Date: |
|----------|--------------------|-----------|------------|--------|
| | | | PD | 3/3/22 |
| | | | Comments | |
| 0 | | | | |
| 2 | | | | |
| 4 | | | | |
| 6 | | | | |
| 8 | | | | |
| 10 | | | | |
| 12 | | | | |
| 14 | -12 TS + 1CP | basalt | | |
| 16 | | | | |
| 18 | | | | |
| 20 | | | | |
| 22 | | | | |
| 24 | | | | |
| 26 | | | | |
| 28 | | | | |
| 30 | | | | |
| 32 | | | | |
| 34 | | | | |
| 36 | | | | |
| 38 | | | | |
| 40 | | | | |
| 42 | | | | |
| 44 | | | | |
| 46 | | | | |
| 48 | | | | |
| 50 | | | | |
| 52 | | | | |
| 54 | | | | |
| 56 | | | | |
| 58 | | | | |
| 60 | | | | |
| 62 | | | | |
| 64 | | | | |
| 66 | | | | |
| 68 | | | | |
| 70 | | | | |
| 72 | | | | |
| 74 | | | | |
| 76 | | | | |
| 78 | | | | |
| 80 | | | | |
| 82 | | | | |
| 84 | | | | |
| 86 | | | | |
| 88 | | | | |
| 90 | | | | |
| 92 | | | | |
| 94 | | | | |
| 96 | | | | |
| 98 | | | | |
| 100 | | | | |
| 102 | | | | |
| 104 | | | | |
| 106 | | | | |
| 108 | | | | |
| 110 | | | | |
| 112 | | | | |
| 114 | | | | |
| 116 | | | | |
| 118 | | | | |
| 120 | | | | |
| 122 | | | | |
| 124 | | | | |
| 126 | | | | |
| 128 | | | | |
| 130 | | | | |
| 132 | | | | |
| 134 | | | | |
| 136 | | | | |
| 138 | | | | |
| 140 | | | | |
| 142 | | | | |
| 144 | | | | |
| 146 | | | | |
| 148 | | | | |
| 150 | | | | |
| 152 | | | | |

Unit
5

med-grained
 1-3% plagioclase glomerocrysts
 3/2 mm
 3% clay pseudomorphs of?
 2/1 mm

this and
 next or three
 sections (until
 50R-4, 148m)
 is good for
 PC sampling

CM Scale
0
-2
-4
-6
-8
-10
-12
-14
-16
-18
-20
-22
-24
-26
-28
-30
-32
-34
-36
-38
-40
-42
-44
-46
-48
-50
-52
-54
-56
-58
-60
-62
-64
-66
-68
-70
-72
-74
-76
-78
-80
-82
-84
-86
-88
-90
-92
-94
-96
-98
-100
-102
-104
-106
-108
-110
-112
-114
-116
-118
-120
-122
-124
-126
-128
-130
-132
-134
-136
-138
-140
-142
-144
-146
-148
-150
-152

| Drawing/Annotation | Lithology | Logged By: | Date: |
|--------------------|-----------|------------------|--------|
| | | PD | 3/3/22 |
| Comments | | | |
| | | Same as 50R-1 | |

CM Scale

- 0
- 2
- 4
- 6
- 8
- 10
- 12
- 14
- 16
- 18
- 20
- 22
- 24
- 26
- 28
- 30
- 32
- 34
- 36
- 38
- 40
- 42
- 44
- 46
- 48
- 50
- 52
- 54
- 56
- 58
- 60
- 62
- 64
- 66
- 68
- 70
- 72
- 74
- 76
- 78
- 80
- 82
- 84
- 86
- 88
- 90
- 92
- 94
- 96
- 98
- 100
- 102
- 104
- 106
- 108
- 110
- 112
- 114
- 116
- 118
- 120
- 122
- 124
- 126
- 128
- 130
- 132
- 134
- 136
- 138
- 140
- 142
- 144
- 146
- 148
- 150
- 152

| Drawing/Annotation | Lithology | Logged By: | Date: |
|--------------------|-----------|------------------|--------|
| | | FD | 3/3/22 |
| Comments | | | |
| | | Same as 50R-1 | |

Logged By:
PD

Date:
3/3/22

Drawing/Annotation

Lithology

Comments

CM Scale

- 0
- 2
- 4
- 6
- 8
- 10
- 12
- 14
- 16
- 18
- 20
- 22
- 24
- 26
- 28
- 30
- 32
- 34
- 36
- 38
- 40
- 42
- 44
- 46
- 48
- 50
- 52
- 54
- 56
- 58
- 60
- 62
- 64
- 66
- 68
- 70
- 72
- 74
- 76
- 78
- 80
- 82
- 84
- 86
- 88
- 90
- 92
- 94
- 96
- 98
- 100
- 102
- 104
- 106
- 108
- 110
- 112
- 114
- 116
- 118
- 120
- 122
- 124
- 126
- 128
- 130
- 132
- 134
- 136
- 138
- 140
- 142
- 144
- 146
- 148
- 150
- 152

Same as
50R-1

| CM Scale | Drawing/Annotation | Lithology | Logged By: | Date: |
|----------|--------------------|-----------|------------|--------|
| | | | PD | 3/3/22 |
| | | | Comments | |
| 0 | | | | |
| -2 | | | | |
| -4 | | | | |
| -6 | | | | |
| -8 | | | | |
| -10 | | | | |
| -12 | | | | |
| -14 | | | | |
| -16 | | | | |
| -18 | | | | |
| -20 | | | | |
| -22 | | | | |
| -24 | | | | |
| -26 | | | | |
| -28 | 28 | | | |
| -30 | | | | |
| -32 | | | | |
| -34 | | | | |
| -36 | | | | |
| -38 | | | | |
| -40 | | | | |
| -42 | | | | |
| -44 | | | | |
| -46 | | | | |
| -48 | | | | |
| -50 | | | | |
| -52 | | | | |
| -54 | | | | |
| -56 | | | | |
| -58 | | | | |
| -60 | | | | |
| -62 | | | | |
| -64 | | | | |
| -66 | | | | |
| -68 | | | | |
| -70 | | | | |
| -72 | | | | |
| -74 | | | | |
| -76 | | | | |
| -78 | | | | |
| -80 | | | | |
| -82 | | | | |
| -84 | | | | |
| -86 | | | | |
| -88 | | | | |
| -90 | | | | |
| -92 | 91 | | | |
| -94 | | | | |
| -96 | | | | |
| -98 | | | | |
| -100 | | | | |
| -102 | | | | |
| -104 | | | | |
| -106 | | | | |
| -108 | | | | |
| -110 | | | | |
| -112 | | | | |
| -114 | | | | |
| -116 | | | | |
| -118 | | | | |
| -120 | | | | |
| -122 | | | | |
| -124 | | | | |
| -126 | | | | |
| -128 | | | | |
| -130 | | | | |
| -132 | | | | |
| -134 | | | | |
| -136 | | | | |
| -138 | | | | |
| -140 | | | | |
| -142 | | | | |
| -144 | | | | |
| -146 | | | | |
| -148 | | | | |
| -150 | | | | |
| -152 | | | | |

28

vein network filled with clay

91

Same as 50R-1

CM Scale

0
-2
-4
-6
-8
-10
-12
-14
-16
-18
-20
-22
-24
-26
-28
-30
-32
-34
-36
-38
-40
-42
-44
-46
-48
-50
-52
-54
-56
-58
-60
-62
-64
-66
-68
-70
-72
-74
-76
-78
-80
-82
-84
-86
-88
-90
-92
-94
-96
-98
-100
-102
-104
-106
-108
-110
-112
-114
-116
-118
-120
-122
-124
-126
-128
-130
-132
-134
-136
-138
-140
-142
-144
-146
-148
-150
-152

Drawing/Annotation

Lithology

Logged By:

Date:

Comments

Same as 50R-1

Still medium sized

Unit 5
continues

| CM Scale | Drawing/Annotation | Lithology | Logged By: | Date: |
|----------|--------------------|---------------|----------------|-------|
| | | | Comments | |
| 0-30 | medium grained | | | |
| 30-63 | fine grained | pipe vesicles | | |
| 63-67 | aphanitic | | | |
| | | | chilled margin | |

Unit 5

End of Unit 5

CM Scale

0
2
4
6
8
10
12
14
16
18
20
22
24
26
28
30
32
34
36
38
40
42
44
46
48
50
52
54
56
58
60
62
64
66
68
70
72
74
76
78
80
82
84
86
88
90
92
94
96
98
100
102
104
106
108
110
112
114
116
118
120
122
124
126
128
130
132
134
136
138
140
142
144
146
148
150
152

0-30
medium grained

pipe vesicles

30-63 fine grained

63-67 aphanitic

↑ PXR

basalt
(as in
50R-1)

chilled margin

CM Scale

0
-2
-4
-6
-8
-10
-12
-14
-16
-18
-20
-22
-24
-26
-28
-30
-32
-34
-36
-38
-40
-42
-44
-46
-48
-50
-52
-54
-56
-58
-60
-62
-64
-66
-68
-70
-72
-74
-76
-78
-80
-82
-84
-86
-88
-90
-92
-94
-96
-98
-100
-102
-104
-106
-108
-110
-112
-114
-116
-118
-120
-122
-124
-126
-128
-130
-132
-134
-136
-138
-140
-142
-144
-146
-148
-150
-152

Drawing/Annotation

Lithology

Logged By:

Date:

Comments

black chert! with white silicate veins (quartzite?)
and some secondary calcite

at the bottom, less silicified carbonate
sediment (for < 1 cm) ~~bed~~ (and apparently
baked?)
(Needs Roman lithostratigraphic
Number!)

little piece of
basalt

Unit 6



aphiric
aphanitic grain size (flds, cpx and
probably replaced
ol in groundmass)

dark gray

| CM Scale | Drawing/Annotation | Lithology | Logged By: | Date: |
|----------|-----------------------|-----------------|------------|--|
| | | | Comments | |
| 0 | → full in from unit 5 | 3-20 | | |
| 3 | | | | |
| 10 | 3-20 cm aphanitic | 3-20 | | 3-12 moderately vesicular |
| 12 | | | | |
| 14 | | | | |
| 16 | | | | |
| 18 | | | | |
| 20 | | | | |
| 22 | | | | |
| 24 | | | | |
| 26 | | | | |
| 28 | | | | |
| 30 | | | | |
| 32 | | | | |
| 34 | | | | |
| 36 | | | | |
| 38 | | | | |
| 40 | | | | |
| 42 | | | | |
| 48 | | | | |
| 50 | | | | |
| 52 | | | | |
| 54 | | | | |
| 56 | | | | |
| 58 | | | | |
| 60 | | | | |
| 62 | | | | |
| 64 | | | | |
| 66 | | | | |
| 87 | 87-98 medium grained | | | - light gray - aphyric basalt - slightly altered |
| 88 | | | | |
| 90 | | | | |
| 92 | | | | |
| 94 | | | | |
| 96 | | | | |
| 98 | | | | |
| 100 | | | | |
| 102 | | | | |
| 104 | | | | |
| 106 | | | | |
| 108 | | | | |
| 110 | | | | |
| 112 | | | | |
| 114 | | | | |
| 116 | | | | |
| 118 | | | | |
| 120 | | | | |
| 122 | | | | |
| 124 | | | | |
| 126 | | | | |
| 128 | | | | |
| 130 | | | | |
| 132 | | | | |
| 134 | | | | |
| 136 | | | | |
| 138 | | | | |
| 140 | | | | |
| 142 | | | | |
| 144 | | | | |
| 146 | | | | |
| 148 | | | | |
| 150 | | | | |
| 152 | | | | |

Unit 7

Unit 7

| CM Scale | Drawing/Annotation | Lithology | Logged By: | Date: | |
|----------|--------------------|---------------------------|-----------------------------------|-------|--|
| | | | Comments | | |
| 0 | | 0-30 moderately vesicular | | | |
| 2 | | | | | |
| 4 | | | | | |
| 6 | | | | | |
| 8 | | | | | |
| 10 | | | | | |
| 12 | | | | | |
| 14 | | | | | |
| 16 | | | | | |
| 18 | | | | | |
| 20 | | | | | |
| 22 | | | | | |
| 24 | | | | | |
| 26 | | | | | |
| 28 | | | | | |
| 30 | | | | | |
| 32 | | | | | |
| 34 | | | | | |
| 36 | | | | | |
| 38 | | | | | |
| 40 | | | | | |
| 42 | | | | | |
| 44 | | | | | |
| 46 | | | | | |
| 48 | | | | | |
| 50 | | | 30- ⁷³⁹ 125 | | |
| 52 | | | | | |
| 54 | | | | | |
| 56 | | | | | |
| 58 | | | | | |
| 60 | | | | | |
| 62 | | | | | |
| 64 | | | | | |
| 66 | | | | | |
| 68 | | | | | |
| 70 | | | | | |
| 72 | | | | | |
| 74 | | | | | |
| 76 | | | | | |
| 78 | | | | | |
| 80 | | | | | |
| 82 | | | | | |
| 84 | | | | | |
| 86 | | | | | |
| 88 | | | | | |
| 90 | | | | | |
| 92 | | | | | |
| 94 | | | | | |
| 96 | | | | | |
| 98 | | | | | |
| 100 | | | | | |
| 102 | | | | | |
| 104 | | | | | |
| 106 | | | | | |
| 108 | | | | | |
| 110 | | | | | |
| 112 | | | | | |
| 114 | | | | | |
| 116 | | | | | |
| 118 | | | | | |
| 120 | | | | | |
| 122 | | | | | |
| 124 | | | | | |
| 126 | | | | | |
| 128 | | | | | |
| 130 | | | | | |
| 132 | | | | | |
| 134 | | | | | |
| 136 | | | | | |
| 138 | | | | | |
| 140 | | | | | |
| 142 | | | | | |
| 144 | | | | | |
| 146 | | | | | |
| 148 | | | | | |
| 150 | | | | | |
| 152 | | | | | |

- all medium-grained
- aphyric
- light gray

Sparsely vesicular

50cm - 737 "patchy" texture

↑
highly
aphyric

TS + ICP

Unit 7

CM Scale

0
-2
-4
-6
-8
-10
-12
-14
-16
-18
-20
-22
-24
-26
-28
-30
-32
-34
-36
-38
-40
-42
-44
-46
-48
-50
-52
-54
-56
-58
-60
-62
-64
-66
-68
-70
-72
-74
-76
-78
-80
-82
-84
-86
-88
-90
-92
-94
-96
-98
-100
-102
-104
-106
-108
-110
-112
-114
-116
-118
-120
-122
-124
-126
-128
-130
-132
-134
-136
-138
-140
-142
-144
-146
-148
-150
-152

| Drawing/Annotation | Lithology | Logged By: | Date: |
|--------------------|-----------|------------|--|
| | | Comments | |
| | | | <p>sparsely very vesicular (<1%) AS 52R-2 :- sparsely vesicular - medium grained - slightly altered - aphyric patchy texture throughout!</p> <p>good for PC sampling</p> |
| | | | |

[Handwritten signature]
T8100

Unit 7)

CM Scale

- 0
- 2
- 4
- 6
- 8
- 10
- 12
- 14
- 16
- 18
- 20
- 22
- 24
- 26
- 28
- 30
- 32
- 34
- 36
- 38
- 40
- 42
- 44
- 46
- 48
- 50
- 52
- 54
- 56
- 58
- 60
- 62
- 64
- 66
- 68
- 70
- 72
- 74
- 76
- 78
- 80
- 82
- 84
- 86
- 88
- 90
- 92
- 94
- 96
- 98
- 100
- 102
- 104
- 106
- 108
- 110
- 112
- 114
- 116
- 118
- 120
- 122
- 124
- 126
- 128
- 130
- 132
- 134
- 136
- 138
- 140
- 142
- 144
- 146
- 148
- 150
- 152

Drawing/Annotation

Lithology

Logged By:

Date:

Comments

// vein 77-18 cm

as 52-3

CM Scale

- 0
- 2
- 4
- 6
- 8
- 10
- 12
- 14
- 16
- 18
- 20
- 22
- 24
- 26
- 28
- 30
- 32
- 34
- 36
- 38
- 40
- 42
- 44
- 46
- 48
- 50
- 52
- 54
- 56
- 58
- 60
- 62
- 64
- 66
- 68
- 70
- 72
- 74
- 76
- 78
- 80
- 82
- 84
- 86
- 88
- 90
- 92
- 94
- 96
- 98
- 100
- 102
- 104
- 106
- 108
- 110
- 112
- 114
- 116
- 118
- 120
- 122
- 124
- 126
- 128
- 130
- 132
- 134
- 136
- 138
- 140
- 142
- 144
- 146
- 148
- 150
- 152

| Drawing/Annotation | Lithology | Logged By: PD | Date: 3/4/22 |
|--------------------|-----------|--|-----------------|
| Comments | | | |
| | | <p>highly phytic cpx - feldsp - ol ol</p> <p><u>sparsely phytic</u></p> <p>medium grained</p> <p>41% plag 5/2 mm</p> <p>variolithic gm plag?</p> <p>dark gray</p> <p>slightly altered</p> | |

| CM Scale | Drawing/Annotation | Lithology | Logged By: | Date: |
|----------|--------------------|-----------|------------|--------|
| | | | PD | 3/3/22 |
| | | | Comments | |
| 0 | | | | |
| -2 | | | | |
| -4 | | | | |
| -6 | | | | |
| -8 | | | | |
| -10 | | | | |
| -12 | -12 | | | |
| -14 | vein w/ | | | |
| -16 | clay | | | |
| -18 | | | | |
| -20 | | | | |
| -22 | | | | |
| -24 | | | | |
| -26 | | | | |
| -28 | | | | |
| -30 | -29 | | | |
| -32 | | | | |
| -34 | | | | |
| -36 | | | | |
| -38 | | | | |
| -40 | | | | |
| -42 | | | | |
| -44 | | | | |
| -46 | | | | |
| -48 | | | | |
| -50 | | | | |
| -52 | | | | |
| -54 | | | | |
| -56 | | | | |
| -58 | | | | |
| -60 | | | | |
| -62 | | | | |
| -64 | | | | |
| -66 | | | | |
| -68 | | | | |
| -70 | | | | |
| -72 | | | | |
| -74 | | | | |
| -76 | 75 | | | |
| -78 | | | | |
| -80 | | | | |
| -82 | | | | |
| -84 | | | | |
| -86 | | | | |
| -88 | | | | |
| -90 | | | | |
| -92 | | | | |
| -94 | | | | |
| -96 | | | | |
| -98 | | | | |
| -100 | | | | |
| -102 | | | | |
| -104 | | | | |
| -106 | | | | |
| -108 | | | | |
| -110 | | | | |
| -112 | | | | |
| -114 | | | | |
| -116 | | | | |
| -118 | | | | |
| -120 | | | | |
| -122 | | | | |
| -124 | | | | |
| -126 | | | | |
| -128 | | | | |
| -130 | | | | |
| -132 | | | | |
| -134 | | | | |
| -136 | | | | |
| -138 | | | | |
| -140 | | | | |
| -142 | | | | |
| -144 | | | | |
| -146 | | | | |
| -148 | | | | |
| -150 | | | | |
| -152 | | | | |

same as
53R-1

Unit 7

| CM Scale | Drawing/Annotation | Lithology | Logged By: | Date: |
|----------|--------------------|-----------|------------|--------|
| | | | PD | 3/4/22 |
| | | | Comments | |
| 0 | | | | |
| -2 | | | | |
| -4 | | | | |
| -6 | | | | |
| -8 | | | | |
| -10 | | | | |
| -12 | | | | |
| -14 | | | | |
| -16 | | | | |
| -18 | | | | |
| -20 | | | | |
| -22 | | | | |
| -24 | | | | |
| -26 | | | | |
| -28 | | | | |
| -30 | | | | |
| -32 | | | | |
| -34 | | | | |
| -36 | | | | |
| -38 | | | | |
| -40 | | | | |
| -42 | | | | |
| -44 | | | | |
| -46 | | | | |
| -48 | | | | |
| -50 | | | | |
| -52 | | | | |
| -54 | | | | |
| -56 | | | | |
| -58 | | | | |
| -60 | | | | |
| -62 | | | | |
| -64 | | | | |
| -66 | | | | |
| -68 | | | | |
| -70 | | | | |
| -72 | | | | |
| -74 | | | | |
| -76 | | | | |
| -78 | | | | |
| -80 | | | | |
| -82 | | | | |
| -84 | | | | |
| -86 | | | | |
| -88 | | | | |
| -90 | | | | |
| -92 | | | | |
| -94 | | | | |
| -96 | | | | |
| -98 | | | | |
| -100 | | | | |
| -102 | | | | |
| -104 | | | | |
| -106 | | | | |
| -108 | | | | |
| -110 | | | | |
| -112 | | | | |
| -114 | | | | |
| -116 | | | | |
| -118 | | | | |
| -120 | | | | |
| -122 | | | | |
| -124 | | | | |
| -126 | | | | |
| -128 | | | | |
| -130 | | | | |
| -132 | | | | |
| -134 | | | | |
| -136 | | | | |
| -138 | | | | |
| -140 | | | | |
| -142 | | | | |
| -144 | | | | |
| -146 | | | | |
| -148 | | | | |
| -150 | | | | |
| -152 | | | | |

-82 vein w/ calcite
-94

same as 53R-1

Unit 7

| CM Scale | Drawing/Annotation | Lithology | Logged By: | Date: |
|----------|--------------------|-----------|------------|--------|
| | | | PD | 3/4/22 |
| | | | Comments | |
| 0 | | | | |
| 2 | | | | |
| 4 | | | | |
| 6 | | | | |
| 8 | 8 | | | |
| 10 | | | | |
| 12 | | | | |
| 14 | | | | |
| 16 | | | | |
| 18 | | | | |
| 20 | | | | |
| 22 | | | | |
| 24 | | | | |
| 26 | | | | |
| 28 | | | | |
| 30 | | | | |
| 32 | | | | |
| 34 | | | | |
| 36 | | | | |
| 38 | | | | |
| 40 | | | | |
| 42 | | | | |
| 44 | | | | |
| 46 | | | | |
| 48 | | | | |
| 50 | | | | |
| 52 | | | | |
| 54 | | | | |
| 56 | | | | |
| 58 | | | | |
| 60 | | | | |
| 62 | | | | |
| 64 | | | | |
| 66 | | | | |
| 68 | | | | |
| 70 | | | | |
| 72 | | | | |
| 74 | | | | |
| 76 | | | | |
| 78 | | | | |
| 80 | 79 | | | |
| 82 | | | | |
| 84 | | | | |
| 86 | | | | |
| 88 | | | | |
| 90 | | | | |
| 92 | | | | |
| 94 | | | | |
| 96 | | | | |
| 98 | | | | |
| 100 | | | | |
| 102 | | | | |
| 104 | | | | |
| 106 | | | | |
| 108 | | | | |
| 110 | | | | |
| 112 | | | | |
| 114 | | | | |
| 116 | | | | |
| 118 | | | | |
| 120 | | | | |
| 122 | | | | |
| 124 | | | | |
| 126 | | | | |
| 128 | | | | |
| 130 | | | | |
| 132 | | | | |
| 134 | | | | |
| 136 | | | | |
| 138 | | | | |
| 140 | | | | |
| 142 | | | | |
| 144 | | | | |
| 146 | | | | |
| 148 | | | | |
| 150 | | | | |
| 152 | | | | |

Unit 7

vein filled with clay

CM Scale

0
2
4
6
8
10
12
14
16
18
20
22
24
26
28
30
32
34
36
38
40
42
44
46
48
50
52
54
56
58
60
62
64
66
68
70
72
74
76
78
80
82
84
86
88
90
92
94
96
98
100
102
104
106
108
110
112
114
116
118
120
122
124
126
128
130
132
134
136
138
140
142
144
146
148
150
152

Drawing/Annotation

Lithology

Logged By:

PD

Date:

3/4/22

Comments

-32
vein w/
clay

-46

-75
fine grained
mod. alteration
1% plagioclase 2/mm

-87

-106

vein

-120

same as
53R-1

Unit 7

| CM Scale | Drawing/Annotation | Lithology | Logged By: | Date: |
|----------|--------------------|-----------|------------|--------|
| | | | PD | 3/4/22 |
| | | | Comments | |
| 0 | | | | |
| 2 | | | | |
| 4 | | | | |
| 6 | | | | |
| 8 | | | | |
| 10 | | | | |
| 12 | | | | |
| 14 | | | | |
| 16 | | | | |
| 18 | | | | |
| 20 | | | | |
| 22 | | | | |
| 24 | | | | |
| 26 | | | | |
| 28 | | | | |
| 30 | | | | |
| 32 | | | | |
| 34 | | | | |
| 36 | | | | |
| 38 | | | | |
| 40 | | | | |
| 42 | | | | |
| 44 | | | | |
| 46 | | | | |
| 48 | | | | |
| 50 | - void w/ calcite | | | |
| 52 | | | | |
| 54 | | | | |
| 56 | | | | |
| 58 | | | | |
| 60 | | | | |
| 62 | | | | |
| 64 | | | | |
| 66 | | | | |
| 68 | | | | |
| 70 | | | | |
| 72 | | | | |
| 74 | | | | |
| 76 | | | | |
| 78 | | | | |
| 80 | | | | |
| 82 | | | | |
| 84 | | | | |
| 86 | | | | |
| 88 | | | | |
| 90 | | | | |
| 92 | | | | |
| 94 | | | | |
| 96 | | | | |
| 98 | | | | |
| 100 | | | | |
| 102 | | | | |
| 104 | | | | |
| 106 | | | | |
| 108 | | | | |
| 110 | | | | |
| 112 | | | | |
| 114 | | | | |
| 116 | | | | |
| 118 | | | | |
| 120 | | | | |
| 122 | | | | |
| 124 | | | | |
| 126 | | | | |
| 128 | | | | |
| 130 | | | | |
| 132 | | | | |
| 134 | | | | |
| 136 | | | | |
| 138 | | | | |
| 140 | | | | |
| 142 | | | | |
| 144 | | | | |
| 146 | | | | |
| 148 | | | | |
| 150 | | | | |
| 152 | | | | |

Unit 7

2-3% plag
8/3mm euhedral

^{or cpx}
ol + plag
glomerocrysts

med. grained
fresh
non-vesicular

* This core will be good for geochron

| CM Scale | Drawing/Annotation | Lithology | Logged By: | Date: |
|----------|-----------------------|-----------|------------|--------|
| | | | PO | 3/4/22 |
| | | | Comments | |
| 0 | | | | |
| -2 | | | | |
| -4 | | | | |
| -6 | | | | |
| -8 | | | | |
| -10 | | | | |
| -12 | | | | |
| -14 | | | | |
| -16 | | | | |
| -18 | | | | |
| -20 | | | | |
| -22 | | | | |
| -24 | | | | |
| -26 | | | | |
| -28 | | | | |
| -30 | | | | |
| -32 | | | | |
| -34 | | | | |
| -36 | | | | |
| -38 | | | | |
| -40 | | | | |
| -42 | | | | |
| -44 | | | | |
| -46 | | | | |
| -48 | | | | |
| -50 | | | | |
| -52 | | | | |
| -54 | | | | |
| -56 | | | | |
| -58 | | | | |
| -60 | | | | |
| -62 | | | | |
| -64 | | | | |
| -66 | | | | |
| -68 | | | | |
| -70 | | | | |
| -72 | | | | |
| -74 | | | | |
| -76 | -75 | | | |
| -78 | vein w/ clay + pyrite | | | |
| -80 | | | | |
| -82 | | | | |
| -84 | -84 | | | |
| -86 | | | | |
| -88 | | | | |
| -90 | | | | |
| -92 | | | | |
| -94 | | | | |
| -96 | | | | |
| -98 | | | | |
| -100 | | | | |
| -102 | | | | |
| -104 | | | | |
| -106 | | | | |
| -108 | | | | |
| -110 | | | | |
| -112 | | | | |
| -114 | | | | |
| -116 | | | | |
| -118 | -118 | | | |
| -120 | vein w/ clay + pyrite | | | |
| -122 | | | | |
| -124 | | | | |
| -126 | -126 | | | |
| -128 | | | | |
| -130 | | | | |
| -132 | | | | |
| -134 | | | | |
| -136 | | | | |
| -138 | | | | |
| -140 | | | | |
| -142 | | | | |
| -144 | | | | |
| -146 | | | | |
| -148 | | | | |
| -150 | | | | |
| -152 | | | | |

Unit 7

same as
54-1

CM Scale

- 0
- 2
- 4
- 6
- 8
- 10
- 12
- 14
- 16
- 18
- 20
- 22
- 24
- 26
- 28
- 30
- 32
- 34
- 36
- 38
- 40
- 42
- 44
- 46
- 48
- 50
- 52
- 54
- 56
- 58
- 60
- 62
- 64
- 66
- 68
- 70
- 72
- 74
- 76
- 78
- 80
- 82
- 84
- 86
- 88
- 90
- 92
- 94
- 96
- 98
- 100
- 102
- 104
- 106
- 108
- 110
- 112
- 114
- 116
- 118
- 120
- 122
- 124
- 126
- 128
- 130
- 132
- 134
- 136
- 138
- 140
- 142
- 144
- 146
- 148
- 150
- 152

| Drawing/Annotation | Lithology | Comments |
|---|-----------|---|
| <p>10 vein w/ clay, calcite, pyrite 20</p> <p>126 vein w/ calcite 129</p> | | <p>Logged By: PD</p> <p>Date: 3/4/22</p> <p>Same as 54R-1</p> |

Unit 7

CM Scale

0
-2
-4
-6
-8
-10
-12
-14
-16
-18
-20
-22
-24
-26
-28
-30
-32
-34
-36
-38
-40
-42
-44
-46
-48
-50
-52
-54
-56
-58
-60
-62
-64
-66
-68
-70
-72
-74
-76
-78
-80
-82
-84
-86
-88
-90
-92
-94
-96
-98
-100
-102
-104
-106
-108
-110
-112
-114
-116
-118
-120
-122
-124
-126
-128
-130
-132
-134
-136
-138
-140
-142
-144
-146
-148
-150
-152

Drawing/Annotation

Lithology

Logged By:

PD

Date:

3/4/22

Comments

1-3% plag phenos
8/3mm

medium grained

slightly altered

non-vesicular

Unit 7

-111

vein w/
clay
-128

CM Scale

- 0
- 2
- 4
- 6
- 8
- 10
- 12
- 14
- 16
- 18
- 20
- 22
- 24
- 26
- 28
- 30
- 32
- 34
- 36
- 38
- 40
- 42
- 44
- 46
- 48
- 50
- 52
- 54
- 56
- 58
- 60
- 62
- 64
- 66
- 68
- 70
- 72
- 74
- 76
- 78
- 80
- 82
- 84
- 86
- 88
- 90
- 92
- 94
- 96
- 98
- 100
- 102
- 104
- 106
- 108
- 110
- 112
- 114
- 116
- 118
- 120
- 122
- 124
- 126
- 128
- 130
- 132
- 134
- 136
- 138
- 140
- 142
- 144
- 146
- 148
- 150
- 152

| Drawing/Annotation | Lithology | Logged By: | Date: |
|--------------------|-----------|------------------|--------|
| | | Comments | |
| | | FD | 3/4/22 |
| | | same as 55R-1 | |

Unit 7

CM Scale

- 0
- 2
- 4
- 6
- 8
- 10
- 12
- 14
- 16
- 18
- 20
- 22
- 24
- 26
- 28
- 30
- 32
- 34
- 36
- 38
- 40
- 42
- 44
- 46
- 48
- 50
- 52
- 54
- 56
- 58
- 60
- 62
- 64
- 66
- 68
- 70
- 72
- 74
- 76
- 78
- 80
- 82
- 84
- 86
- 88
- 90
- 92
- 94
- 96
- 98
- 100
- 102
- 104
- 106
- 108
- 110
- 112
- 114
- 116
- 118
- 120
- 122
- 124
- 126
- 128
- 130
- 132
- 134
- 136
- 138
- 140
- 142
- 144
- 146
- 148
- 150
- 152

| Drawing/Annotation | Lithology | Logged By: PD | Date: 3/4/22 |
|--------------------|-----------|--------------------------|-----------------|
| Comments | | | |
| | | <p>Same as 55R-1</p> | |

Unit 7

CM Scale

- 0
- 2
- 4
- 6
- 8
- 10
- 12
- 14
- 16
- 18
- 20
- 22
- 24
- 26
- 28
- 30
- 32
- 34
- 36
- 38
- 40
- 42
- 44
- 46
- 48
- 50
- 52
- 54
- 56
- 58
- 60
- 62
- 64
- 66
- 68
- 70
- 72
- 74
- 76
- 78
- 80
- 82
- 84
- 86
- 88
- 90
- 92
- 94
- 96
- 98
- 100
- 102
- 104
- 106
- 108
- 110
- 112
- 114
- 116
- 118
- 120
- 122
- 124
- 126
- 128
- 130
- 132
- 134
- 136
- 138
- 140
- 142
- 144
- 146
- 148
- 150
- 152

| Drawing/Annotation | Lithology | Logged By: | Date: |
|----------------------------------|-----------|------------------|--------|
| | | PD | 3/4/22 |
| Comments | | | |
| | | same as 55R-1 | |
| -78 vein w/ calcite, clay -82 | | | |

Unit 7

CM Scale

0
2
4
6
8
10
12
14
16
18
20
22
24
26
28
30
32
34
36
38
40
42
44
46
48
50
52
54
56
58
60
62
64
66
68
70
72
74
76
78
80
82
84
86
88
90
92
94
96
98
100
102
104
106
108
110
112
114
116
118
120
122
124
126
128
130
132
134
136
138
140
142
144
146
148
150
152

Drawing/Annotation

Lithology

Logged By:

PD

Date:

3/4/22

Comments

-33 vein w/ clay
-35

-50

vein w/
calcite + clay

-74

Same as
55R-1

Unit 7

CM Scale

0
2
4
6
8
10
12
14
16
18
20
22
24
26
28
30
32
34
36
38
40
42
44
46
48
50
52
54
56
58
60
62
64
66
68
70
72
74
76
78
80
82
84
86
88
90
92
94
96
98
100
102
104
106
108
110
112
114
116
118
120
122
124
126
128
130
132
134
136
138
140
142
144
146
148
150
152

| Drawing/Annotation | Lithology | Logged By: PD | Date: 3/4/22 |
|---|-----------|------------------|---|
| Comments | | | |
| <p>8 fine grained</p> | | | |
| <p>vein network w/ clay & calcite</p> <p>31</p> | | | <p>medium grained 1-3% plag 8/3mm</p> |
| | | | <p>slightly altered non-vesicular</p> |
| <p>99 vesicle w/ calcite</p> | | | |

Unit 7

| CM Scale | Drawing/Annotation | Lithology | Logged By: | Date: |
|----------|--------------------|-----------|------------|--------|
| | | | PD | 3/4/22 |
| | | | Comments | |
| 0 | | | | |
| 2 | | | | |
| 4 | | | | |
| 6 | | | | |
| 8 | | | | |
| 10 | | | | |
| 12 | | | | |
| 14 | | | | |
| 16 | | | | |
| 18 | | | | |
| 20 | | | | |
| 22 | | | | |
| 24 | | | | |
| 26 | | | | |
| 28 | | | | |
| 30 | | | | |
| 32 | | | | |
| 34 | | | | |
| 36 | | | | |
| 38 | | | | |
| 40 | -39 | | | |
| 42 | | | | |
| 44 | | | | |
| 46 | vein w/ | | | |
| 48 | clay + calcite | | | |
| 50 | | | | |
| 52 | | | | |
| 54 | | | | |
| 56 | | | | |
| 58 | | | | |
| 60 | | | | |
| 62 | | | | |
| 64 | -64 | | | |
| 66 | | | | |
| 68 | | | | |
| 70 | | | | |
| 72 | | | | |
| 74 | | | | |
| 76 | | | | |
| 78 | | | | |
| 80 | | | | |
| 82 | | | | |
| 84 | | | | |
| 86 | | | | |
| 88 | | | | |
| 90 | | | | |
| 92 | | | | |
| 94 | | | | |
| 96 | | | | |
| 98 | | | | |
| 100 | | | | |
| 102 | | | | |
| 104 | | | | |
| 106 | | | | |
| 108 | | | | |
| 110 | | | | |
| 112 | | | | |
| 114 | | | | |
| 116 | | | | |
| 118 | | | | |
| 120 | | | | |
| 122 | | | | |
| 124 | | | | |
| 126 | | | | |
| 128 | | | | |
| 130 | | | | |
| 132 | | | | |
| 134 | | | | |
| 136 | | | | |
| 138 | | | | |
| 140 | | | | |
| 142 | | | | |
| 144 | | | | |
| 146 | | | | |
| 148 | | | | |
| 150 | | | | |
| 152 | | | | |

same as
56R-1

Unit 7

| CM Scale | Drawing/Annotation | Lithology | Logged By: | Date: |
|----------|--------------------|-----------|------------|--------|
| | | | PD | 3/4/22 |
| | | | Comments | |
| 0 | | | | |
| 2 | | | | |
| 4 | | | | |
| 6 | | | | |
| 8 | | | | |
| 10 | → 9 vein w/ clay | | | |
| 12 | | | | |
| 14 | | | | |
| 16 | | | | |
| 18 | | | | |
| 20 | | | | |
| 22 | | | | |
| 24 | | | | |
| 26 | | | | |
| 28 | | | | |
| 30 | | | | |
| 32 | | | | |
| 34 | | | | |
| 36 | | | | |
| 38 | | | | |
| 40 | | | | |
| 42 | → 41 vein w/ clay | | | |
| 44 | | | | |
| 46 | | | | |
| 48 | → 47 | | | |
| 50 | | | | |
| 52 | | | | |
| 54 | | | | |
| 56 | | | | |
| 58 | | | | |
| 60 | | | | |
| 62 | | | | |
| 64 | | | | |
| 66 | | | | |
| 68 | | | | |
| 70 | | | | |
| 72 | | | | |
| 74 | | | | |
| 76 | | | | |
| 78 | | | | |
| 80 | | | | |
| 82 | | | | |
| 84 | | | | |
| 86 | | | | |
| 88 | | | | |
| 90 | | | | |
| 92 | | | | |
| 94 | | | | |
| 96 | | | | |
| 98 | → 97 vein w/ clay | | | |
| 100 | → 100 | | | |
| 102 | | | | |
| 104 | | | | |
| 106 | | | | |
| 108 | | | | |
| 110 | | | | |
| 112 | | | | |
| 114 | | | | |
| 116 | | | | |
| 118 | | | | |
| 120 | | | | |
| 122 | | | | |
| 124 | | | | |
| 126 | | | | |
| 128 | | | | |
| 130 | | | | |
| 132 | | | | |
| 134 | | | | |
| 136 | | | | |
| 138 | | | | |
| 140 | | | | |
| 142 | | | | |
| 144 | | | | |
| 146 | | | | |
| 148 | | | | |
| 150 | | | | |
| 152 | | | | |

Same as
56R-1

Unit 7

| CM Scale | Drawing/Annotation | Lithology | Logged By: | Date: |
|----------|--------------------------|-----------|------------|--------|
| | | | PD | 3/4/22 |
| | | | Comments | |
| 0 | | | | |
| 2 | | | | |
| 4 | | | | |
| 6 | | | | |
| 8 | | | | |
| 10 | | | | |
| 12 | | | | |
| 14 | | | | |
| 16 | | | | |
| 18 | | | | |
| 20 | -20 | | | |
| 22 | | | | |
| 24 | | | | |
| 26 | | | | |
| 28 | | | | |
| 30 | | | | |
| 32 | | | | |
| 34 | | | | |
| 36 | | | | |
| 38 | | | | |
| 40 | | | | |
| 42 | | | | |
| 44 | | | | |
| 46 | | | | |
| 48 | | | | |
| 50 | | | | |
| 52 | | | | |
| 54 | | | | |
| 56 | | | | |
| 58 | | | | |
| 60 | | | | |
| 62 | fine | | | |
| 64 | grained | | | |
| 66 | | | | |
| 68 | | | | |
| 70 | | | | |
| 72 | | | | |
| 74 | | | | |
| 76 | | | | |
| 78 | | | | |
| 80 | | | | |
| 82 | | | | |
| 84 | | | | |
| 86 | | | | |
| 88 | | | | |
| 90 | | | | |
| 92 | | | | |
| 94 | | | | |
| 96 | | | | |
| 98 | | | | |
| 100 | | | | |
| 102 | | | | |
| 104 | | | | |
| 106 | | | | |
| 108 | | | | |
| 110 | | | | |
| 112 | | | | |
| 114 | | | | |
| 116 | | | | |
| 118 | | | | |
| 120 | | | | |
| 122 | -122 vein w/ calcite | | | |
| 124 | -125 | | | |
| 126 | | | | |
| 128 | | | | |
| 130 | | | | |
| 132 | | | | |
| 134 | -133 | | | |
| 136 | -134 | | | |
| 138 | -135 | | | |
| 140 | vein w/ day aphanitic | | | |
| 142 | | | | |
| 144 | | | | |
| 146 | | | | |
| 148 | | | | |
| 150 | | | | |
| 152 | | | | |

same as 56R-1

fine grained

-122 vein w/ calcite
-125

-133
-134
-135
vein w/ day
aphanitic
*chilled margin
-138

End of Unit
7 ↓

56R-5 is
sediments

CM Scale

0
2
4
6
8
10
12
14
16
18
20
22
24
26
28
30
32
34
36
38
40
42
44
46
48
50
52
54
56
58
60
62
64
66
68
70
72
74
76
78
80
82
84
86
88
90
92
94
96
98
100
102
104
106
108
110
112
114
116
118
120
122
124
126
128
130
132
134
136
138
140
142
144
146
148
150
152

Drawing/Annotation

Lithology

Logged By:

Date:

Comments



sediment
Calcareous chalk (with nanofossils)

thermally altered beyond
deposit depth according
to 10m! see their side report

-70 }
-72 }

- aphyric
- aphanitic
- vesicular (15%) up to 7mm filled with calcite + pyrite (see p. 22!)
- gray
- quite fresh ("slightly altered")

Start Unit 8

CM Scale

0
2
4
6
8
10
12
14
16
18
20
22
24
26
28
30
32
34
36
38
40
42
44
46
48
50
52
54
56
58
60
62
64
66
68
70
72
74
76
78
80
82
84
86
88
90
92
94
96
98
100
102
104
106
108
110
112
114
116
118
120
122
124
126
128
130
132
134
136
138
140
142
144
146
148
150
152

Drawing/Annotation

Lithology

Logged By:

Date:

Comments

0-12 aphanitic
12
fine grained

Unit 8

gray
fine grained 0.25 - 0.5 cm grains
slightly altered to moderately altered
20% vesicles filled with zeolite + calcite
5-10% dark (micro-) phenocrysts
either replaced ol
or some kind of px? (3-4mm)
+ 2% plagioclase (2-3mm)
→ tentatively called
moderately phytic
some plagioclase glomerocrysts in grains

CM Scale

0
-2
-4
-6
-8
-10
-12
-14
-16
-18
-20
-22
-24
-26
-28
-30
-32
-34
-36
-38
-40
-42
-44
-46
-48
-50
-52
-54
-56
-58
-60
-62
-64
-66
-68
-70
-72
-74
-76
-78
-80
-82
-84
-86
-88
-90
-92
-94
-96
-98
-100
-102
-104
-106
-108
-110
-112
-114
-116
-118
-120
-122
-124
-126
-128
-130
-132
-134
-136
-138
-140
-142
-144
-146
-148
-150
-152

Drawing/Annotation

Lithology

Logged By:

Date:

Comments

20
3,5
-3,5
↓

three little fragments of
in fall from ~~the~~ sediments

above (Piece 1) = dark chert

3,5 - 145 cm = Unit 8

3,5 - 100 cm = highly vesicular < 1 mm & 5 mm filled with clay + calcite

100 - 112 cm = moderately vesicular < 0,5 mm

112 - 145 = more vesicular

3,5 - 112 = fine grained 0,25 - 0,5

112 - 145 = grain size 0,5 - 1 mm = medium grained

same mineralogy as in 580

2% clay (2mm)

5-10% dark (micro) phenocrysts (3-1 mm)

100 - 128 filled with clay + serpentine?
vein network

TS + ICP
- 145

CM Scale

0
-2
-4
-6
-8
-10
-12
-14
-16
-18
-20
-22
-24
-26
-28
-30
-32
-34
-36
-38
-40
-42
-44
-46
-48
-50
-52
-54
-56
-58
-60
-62
-64
-66
-68
-70
-72
-74
-76
-78
-80
-82
-84
-86
-88
-90
-92
-94
-96
-98
-100
-102
-104
-106
-108
-110
-112
-114
-116
-118
-120
-122
-124
-126
-128
-130
-132
-134
-136
-138
-140
-142
-144
-146
-148
-150
-152

Drawing/Annotation

Lithology

Logged By:

Date:

Comments

Unit 8

0-90 cm = gran 0.5-1 mm (medium)
90-113 = fine grains
113-122 = aphanitic
almost fresh!

veins network

minerals as in 59R-1 but
phenocrysts smaller:

medium grained

2% plq (2mm)
4% ~~plq~~ (1mm) dark stuff

0-122 cm non-
~~vesicular~~ vesicular

good for
PC-sampling!

(PXF)

fine grain

chilled margin

oo

121-122 mod brecciated

vesicular - (filled with calcite)

← altered glass!

End of
Unit 8

59C has sediment!

CM Scale

0
2
4
6
8
10
12
14
16
18
20
22
24
26
28
30
32
34
36
38
40
42
44
46
48
50
52
54
56
58
60
62
64
66
68
70
72
74
76
78
80
82
84
86
88
90
92
94
96
98
100
102
104
106
108
110
112
114
116
118
120
122
124
126
128
130
132
134
136
138
140
142
144
146
148
150
152

| Drawing/Annotation | Lithology | Comments | Logged By: DJ | Date: Mar 6 |
|--|----------------------|-----------------------------------|------------------|----------------|
| 2.57R4/1 | Siltstone | Red staining (Fe?) disturbed | | high |
| 2.576/1 | siltst calc-chalk | red (Fe?) disturbed | | |
| 2.57R4/2 | Siltstone | red (Fe?) gradational | | |
| 2.576/1 | calc chalk | P1, thin laminae disturbed | | |
| Grey 2.5/N | claystone | P4, thin laminae | | |
| <p>70-74 cm - light gray, aphyric basalt</p> <ul style="list-style-type: none"> - aphyric (possibly sparsely phytic but all possible phenocrysts are replaced and filled with the same material that fills the vesicles - so want to distinguish...) - highly altered - highly (micro-vesicular) ~ 25% all filled 100% with relict or calcite - weak flow texture <p style="text-align: center; border: 1px solid black; border-radius: 50%; padding: 10px; display: inline-block;">Unit 9</p> | | | | |

Sediment above



Photocopy

392


392-U1580A-61R-CC-A |

CM Scale

0
2
4
6
8
10
12
14
16
18
20
22
24
26
28
30
32
34
36
38
40
42
44
46
48
50
52
54
56
58
60
62
64
66
68
70
72
74
76
78
80
82
84
86
88
90
92
94
96
98
100
102
104
106
108
110
112
114
116
118
120
122
124
126
128
130
132
134
136
138
140
142
144
146
148
150
152

| Drawing/Annotation | Lithology | Logged By: | Date: |
|--|-----------|------------|--|
| | | DJ | Mar 5 |
| Comments | | | |
| gray 2.5/N | | | fragmented |
| PAL | | | |
| 2.5 YR 3/4 | | | fragmented, baked. mottled with black specks |
| <p>→ 11-15 cm two small basalts</p> <ul style="list-style-type: none"> - aphyric, aphanitic, aphanitic to fine grained - light gray, 15% vesicles (highly elongated, up to 3 mm long, filled with dark clay, almost little pipe vesicles) - flow texture! - highly to moderately altered | | | |
| <p>→ 25-30 cm two (dark) gray pieces</p> <p>highly (micro)vesicular (similar to basaltic piece in 61R-7), <math>\phi</math> 25 mm, 70% filled with zeolite or calc.?</p> <p>aphanitic to fine grained aphyric (no flow texture)</p> | | | |
| <p>still Unit 9</p> | | | |

CM Scale
0
2
4
6
8
10
12
14
16
18
20
22
24
26
28
30
32
34
36
38
40
42
44
46
48
50
52
54
56
58
60
62
64
66
68
70
72
74
76
78
80
82
84
86
88
90
92
94
96
98
100
102
104
106
108
110
112
114
116
118
120
122
124
126
128
130
132
134
136
138
140
142
144
146
148
150
152

| Drawing/Annotation | Lithology | Comments | Logged By: DJ | Date: Mar 5 |
|--|--|---|------------------|----------------|
| 25 Y 4/1 | Breccia | Individual fragments bioturbated, laminated. late chalk, siltstone claystones. One little piece is altered basalt of same kind as Unit 9! | | |
| drilled margin + igneous contact (2mm on floor 2a)  massive, light gray 24-32 maphanite 32-38 fine grained | disturbed 24-40 moderately vesicular 40-38 sparsely vesicular | (10mm diam, filled with clay + zooids) (2mm, 1mm filled with clay) | | |
| <p style="color: red;">(X) slightly altered throughout</p> | | 4% dark phenocrysts (replaced ol?) (2mm / 1mm) 3% feldspar (5mm, 3mm) plus additional glaucocrysts | | |

Unit 10

Unit 10a

Unit 10

Na

CM Scale

0
-2
-4
-6
-8
-10
-12
-14
-16
-18
-20
-22
-24
-26
-28
-30
-32
-34
-36
-38
-40
-42
-44
-46
-48
-50
-52
-54
-56
-58
-60
-62
-64
-66
-68
-70
-72
-74
-76
-78
-80
-82
-84
-86
-88
-90
-92
-94
-96
-98
-100
-102
-104
-106
-108
-110
-112
-114
-116
-118
-120
-122
-124
-126
-128
-130
-132
-134
-136
-138
-140
-142
-144
-146
-148
-150
-152

Drawing/Annotation

Lithology

Logged By:

Date:

Comments

Sparsely vesicular (5%)

2 mm / Ø 1.5 mm all filled with clay

fine grained

slightly altered

4% dark plagioclase (replaces cl?)
2 mm, Ø 1 mm

~~4%~~
3%

4% feldspars (6 mm, 3 mm)

oo

medium grained

CM Scale
 0
2
4
6
8
10
12
14
16
18
20
22
24
26
28
30
32
34
36
38
40
42
44
46
48
50
52
54
56
58
60
62
64
66
68
70
72
74
76
78
80
82
84
86
88
90
92
94
96
98
100
102
104
106
108
110
112
114
116
118
120
122
124
126
128
130
132
134
136
138
140
142
144
146
148
150
152

| Drawing/Annotation | Lithology | Logged By: PD Date: 3/5/22 Comments |
|---|-----------|--|
| <p>0-66 (10a)</p> <p>66-68 (10b)</p> <p># vein network (30-70 cm)</p> <p>0% vesicles at 46 cm</p> | | <p>Unit 10 continues ...</p> <ul style="list-style-type: none"> - slightly altered - medium grained 1% - sparsely vesicular (5%) 3mm (2mm) non-vesicular - moderately phyric <p>1% dark phenocrysts (replaced?) 4mm (2mm)</p> <p>1% feldspar 4mm/3mm 1.5/1mm</p> <p>5-8</p> |
| <p>(66-68 10b)</p> | | |

Unit 10

| CM Scale | Drawing/Annotation | Lithology | Logged By: | Date: |
|----------|--------------------|-----------|--|--------|
| | | | PD | 3/5/22 |
| | | | Comments | |
| 0-16 cm | (105) | | Same as on 63R-1 but large feldspar phenocrysts between 25-86 cm → mainly it here moderately highly phytic feldspars 6 mm, & 4mm 5-8% | |
| 16-114 | (10a) | | med. grained non vesicular 3-5% clay-replaced phenos d? 2/1mm | |

vesicles 10-18 (filled)

0
2
4
6
8
10
12
14
16
18
20
22
24
26
28
30
32
34
36
38
40
42
44
46
48
50
52
54
56
58
60
62
64
66
68
70
72
74
76
78
80
82
84
86
88
90
92
94
96
98
100
102
104
106
108
110
112
114
116
118
120
122
124
126
128
130
132
134
136
138
140
142
144
146
148
150
152

Unit 10

10a

| CM Scale | Drawing/Annotation | Lithology | Logged By: | Date: |
|----------|--------------------|-----------|------------|--------|
| | | | PO | 3/5/22 |
| | | | Comments | |
| 0 | | | | |
| 2 | | | | |
| 4 | | | | |
| 6 | | | | |
| 8 | | | | |
| 10 | | | | |
| 12 | | | | |
| 14 | | | | |
| 16 | | | | |
| 18 | | | | |
| 20 | | | | |
| 22 | | | | |
| 24 | | | | |
| 26 | | | | |
| 28 | | | | |
| 30 | | | | |
| 32 | | | | |
| 34 | | | | |
| 36 | | | | |
| 38 | | | | |
| 40 | | | | |
| 42 | | | | |
| 44 | | | | |
| 46 | | | | |
| 48 | | | | |
| 50 | | | | |
| 52 | | | | |
| 54 | | | | |
| 56 | | | | |
| 58 | | | | |
| 60 | | | | |
| 62 | | | | |
| 64 | | | | |
| 66 | | | | |
| 68 | | | | |
| 70 | | | | |
| 72 | | | | |
| 74 | | | | |
| 76 | | | | |
| 78 | | | | |
| 80 | | | | |
| 82 | | | | |
| 84 | | | | |
| 86 | | | | |
| 88 | | | | |
| 90 | | | | |
| 92 | | | | |
| 94 | | | | |
| 96 | | | | |
| 98 | | | | |
| 100 | | | | |
| 102 | | | | |
| 104 | | | | |
| 106 | | | | |
| 108 | | | | |
| 110 | | | | |
| 112 | | | | |
| 114 | | | | |
| 116 | | | | |
| 118 | | | | |
| 120 | | | | |
| 122 | | | | |
| 124 | | | | |
| 126 | | | | |
| 128 | | | | |
| 130 | | | | |
| 132 | | | | |
| 134 | | | | |
| 136 | | | | |
| 138 | | | | |
| 140 | | | | |
| 142 | | | | |
| 144 | | | | |
| 146 | | | | |
| 148 | | | | |
| 150 | | | | |
| 152 | | | | |

Same as 63R-2
(getting almost coarse grained)

// vein 130-134 cm

CM Scale

0
2
4
6
8
10
12
14
16
18
20
22
24
26
28
30
32
34
36
38
40
42
44
46
48
50
52
54
56
58
60
62
64
66
68
70
72
74
76
78
80
82
84
86
88
90
92
94
96
98
100
102
104
106
108
110
112
114
116
118
120
122
124
126
128
130
132
134
136
138
140
142
144
146
148
150
152

| Drawing/Annotation | Lithology | Comments |
|--|------------------|--|
| 0-44 medium grained (almost coarse grained) | | Same as 63R2 large feldspars (highly plagioclase) between 20-44 cm |
| 44-68 fine grained | } - 50 ○ - 57 | band of slightly phenocryst-free, higher altered of the of |
| 68-144 medium grained | | |


Unit 10

10a

fine-grained
larger ~~at the~~
of specimen

CM Scale

- 0
- 2
- 4
- 6
- 8
- 10
- 12
- 14
- 16
- 18
- 20
- 22
- 24
- 26
- 28
- 30
- 32
- 34
- 36
- 38
- 40
- 42
- 44
- 46
- 48
- 50
- 52
- 54
- 56
- 58
- 60
- 62
- 64
- 66
- 68
- 70
- 72
- 74
- 76
- 78
- 80
- 82
- 84
- 86
- 88
- 90
- 92
- 94
- 96
- 98
- 100
- 102
- 104
- 106
- 108
- 110
- 112
- 114
- 116
- 118
- 120
- 122
- 124
- 126
- 128
- 130
- 132
- 134
- 136
- 138
- 140
- 142
- 144
- 146
- 148
- 150
- 152

| Drawing/Annotation | Lithology | Logged By: PD | Date: 3/5/22 |
|---|-----------|------------------|---|
| Comments | | | |
|  <p data-bbox="224 577 544 640">TS + ICP 0-3cm</p> <p data-bbox="235 661 381 724">//rein</p> | | | <p data-bbox="941 451 1250 535">lik. 63-3</p> <p data-bbox="836 577 1071 640">same as</p> <p data-bbox="860 672 998 745">63-2</p> |

10

CM Scale

0
2
4
6
8
10
12
14
16
18
20
22
24
26
28
30
32
34
36
38
40
42
44
46
48
50
52
54
56
58
60
62
64
66
68
70
72
74
76
78
80
82
84
86
88
90
92
94
96
98
100
102
104
106
108
110
112
114
116
118
120
122
124
126
128
130
132
134
136
138
140
142
144
146
148
150
152

Drawing/Annotation

Lithology

Logged By:

PD

Date:

3/5/22

Comments

same as
b3-2

18

moderately
altered

~~coarse~~
grained

no plag phenos

10 a

10 b

CM Scale

0
2
4
6
8
10
12
14
16
18
20
22
24
26
28
30
32
34
36
38
40
42
44
46
48
50
52
54
56
58
60
62
64
66
68
70
72
74
76
78
80
82
84
86
88
90
92
94
96
98
100
102
104
106
108
110
112
114
116
118
120
122
124
126
128
130
132
134
136
138
140
142
144
146
148
150
152

| Drawing/Annotation | Lithology | Logged By: | Date: |
|--------------------------------|-----------|-----------------------------------|--------|
| | | SH + PD | 3/5/22 |
| | | Comments | |
| fall-in | | calc. chert - various lithologies | |
| 8 coarse grained aphytic | | 7.5cm | |
| 19 | | 19 | |
| | | mod. grained | |
| | | 5-8% plag phenos 5/3mm | |
| | | mod. altered | |
| 55 | | | |
| thin ret. w/ clay | | | |
| 97 | | | |

10c

Entered in Sed
Tab sheet

10a

CM Scale

0
-2
-4
-6
-8
-10
-12
-14
-16
-18
-20
-22
-24
-26
-28
-30
-32
-34
-36
-38
-40
-42
-44
-46
-48
-50
-52
-54
-56
-58
-60
-62
-64
-66
-68
-70
-72
-74
-76
-78
-80
-82
-84
-86
-88
-90
-92
-94
-96
-98
-100
-102
-104
-106
-108
-110
-112
-114
-116
-118
-120
-122
-124
-126
-128
-130
-132
-134
-136
-138
-140
-142
-144
-146
-148
-150
-152

-96
-97
rain w/ clay

Drawing/Annotation

Lithology

Logged By:

PD

Date:

3/5/22

Comments

med.
grained
3-8% plag
5/3mm

mod. altered

CM Scale

0
-2
-4
-6
-8
-10
-12
-14
-16
-18
-20
-22
-24
-26
-28
-30
-32
-34
-36
-38
-40
-42
-44
-46
-48
-50
-52
-54
-56
-58
-60
-62
-64
-66
-68
-70
-72
-74
-76
-78
-80
-82
-84
-86
-88
-90
-92
-94
-96
-98
-100
-102
-104
-106
-108
-110
-112
-114
-116
-118
-120
-122
-124
-126
-128
-130
-132
-134
-136
-138
-140
-142
-144
-146
-148
-150
-152

Drawing/Annotation

Lithology

Logged By:

PD

Date:

3/5/22

Comments

68

coarse
grained
aphytic

113

same as 64-2



same as
64-2

70a



70b

70a

CM Scale

0
2
4
6
8
10
12
14
16
18
20
22
24
26
28
30
32
34
36
38
40
42
44
46
48
50
52
54
56
58
60
62
64
66
68
70
72
74
76
78
80
82
84
86
88
90
92
94
96
98
100
102
104
106
108
110
112
114
116
118
120
122
124
126
128
130
132
134
136
138
140
142
144
146
148
150
152

| Drawing/Annotation | Lithology | Logged By: | Date: |
|-------------------------|-----------|------------|-----------------|
| | | Comments | |
| | | | |
| | | | Same as 64-2 |
| | | | 70a |
| -60 -67 vein w/ clay | | | |
| fall-in | siltstone | g Ray | 70cm 73.5cm |
| | | | |

CM Scale

0
2
4
6
8
10
12
14
16
18
20
22
24
26
28
30
32
34
36
38
40
42
44
46
48
50
52
54
56
58
60
62
64
66
68
70
72
74
76
78
80
82
84
86
88
90
92
94
96
98
100
102
104
106
108
110
112
114
116
118
120
122
124
126
128
130
132
134
136
138
140
142
144
146
148
150
152

Drawing/Annotation

Lithology

Logged By:

PS

Date:

3/5/22

Comments

vein w/ clay
14

same as
64-2

56

vein network w/ clay #

98

135

coarse grained

aphyric ← still to many olivine pseudomorphs
subophitic

mod. - high?
alteration

10a

Start
Subunit #
10b
"delicate"

CM Scale

0
2
4
6
8
10
12
14
16
18
20
22
24
26
28
30
32
34
36
38
40
42
44
46
48
50
52
54
56
58
60
62
64
66
68
70
72
74
76
78
80
82
84
86
88
90
92
94
96
98
100
102
104
106
108
110
112
114
116
118
120
122
124
126
128
130
132
134
136
138
140
142
144
146
148
150
152

Drawing/Annotation

Lithology

Logged By:

PD

Date:

3/5/22

J6. 3/6

Comments

24
vein network
0-6cm w/
clay

"patchy"
groundmass

15 + ICP
"chile pods"

↑
0-58 coarse grained
10% ol, no feldspar plags

Coarse
grained

106

↓
clear
subophitic
texture
below
24-55
cm

58cm
below 58cm
medium grained
aphytic → subophitic
texture

"patchy
groundmass"
106
chile pods

aphytic ← like bottom of 65R?
olivine phenocrysts
until 55cm.

mod.
- high?
alteration

CM Scale



| Drawing/Annotation | Lithology | Comments | Logged By: J.G. | Date: 3/6/2 |
|--|-----------|----------|-----------------|-------------|
| <p>0</p> <p>10c (like 10c on Core 65-R2) moderate to highly altered of phytic cpx 8% of phytic medium grained</p> | | | | |
| <p>45</p> | | | | |
| <p> vein</p> | | | | |
| <p>106</p> <p>ol aggregate, highly altered, 10% of phytic medium-coarse grained below ~ 130cm coarse-grained</p> | | | | |
| <p>} coarse grained</p> | | | | |

10c

106

| Drawing/Annotation | Lithology | Logged By: J.6 | Date: 3/6 |
|--------------------|-----------|---|-----------|
| | | Comments | |
| | | <p>Same as 105 on 66R-1 but continues to be coarse grained "doleritic" → no more phenocrysts all equigranular</p> <p>(highly altered" by definit- fo 105)</p> | |

105

CM Scale

- 0
- 2
- 4
- 6
- 8
- 10
- 12
- 14
- 16
- 18
- 20
- 22
- 24
- 26
- 28
- 30
- 32
- 34
- 36
- 38
- 40
- 42
- 44
- 46
- 48
- 50
- 52
- 54
- 56
- 58
- 60
- 62
- 64
- 66
- 68
- 70
- 72
- 74
- 76
- 78
- 80
- 82
- 84
- 86
- 88
- 90
- 92
- 94
- 96
- 98
- 100
- 102
- 104
- 106
- 108
- 110
- 112
- 114
- 116
- 118
- 120
- 122
- 124
- 126
- 128
- 130
- 132
- 134
- 136
- 138
- 140
- 142
- 144
- 146
- 148
- 150
- 152

| CM Scale | Drawing/Annotation | Lithology | Logged By: | Date: |
|----------|---|-----------|------------|-------|
| | | | Comments | |
| 0 | <p>TS+ICP homogeneous interbed (no shale parts)</p> | | | |
| 2 | | | | |
| 4 | | | | |
| 6 | | | | |
| 8 | | | | |
| 10 | | | | |
| 12 | | | | |
| 14 | | | | |
| 16 | | | | |
| 18 | | | | |
| 20 | | | | |
| 22 | | | | |
| 24 | | | | |
| 26 | | | | |
| 28 | | | | |
| 30 | | | | |
| 32 | | | | |
| 34 | | | | |
| 36 | <p>// var</p> | | | |
| 38 | | | | |
| 40 | | | | |
| 42 | | | | |
| 44 | | | | |
| 46 | | | | |
| 48 | | | | |
| 50 | | | | |
| 52 | | | | |
| 54 | | | | |
| 56 | | | | |
| 58 | | | | |
| 60 | | | | |
| 62 | | | | |
| 64 | | | | |
| 66 | | | | |
| 68 | | | | |
| 70 | | | | |
| 72 | | | | |
| 74 | | | | |
| 76 | | | | |
| 78 | | | | |
| 80 | | | | |
| 82 | | | | |
| 84 | | | | |
| 86 | | | | |
| 88 | | | | |
| 90 | | | | |
| 92 | | | | |
| 94 | | | | |
| 96 | | | | |
| 98 | | | | |
| 100 | | | | |
| 102 | | | | |
| 104 | | | | |
| 106 | | | | |
| 108 | | | | |
| 110 | | | | |
| 112 | | | | |
| 114 | | | | |
| 116 | | | | |
| 118 | | | | |
| 120 | | | | |
| 122 | | | | |
| 124 | | | | |
| 126 | | | | |
| 128 | | | | |
| 130 | | | | |
| 132 | | | | |
| 134 | | | | |
| 136 | | | | |
| 138 | | | | |
| 140 | | | | |
| 142 | | | | |
| 144 | | | | |
| 146 | | | | |
| 148 | | | | |
| 150 | | | | |
| 152 | | | | |

105

| CM Scale | Drawing/Annotation | Lithology | Logged By: J.G. | Date: 3/6 |
|----------|--------------------|-----------|-----------------|-------------------------|
| | | | Comments | |
| 0 | | | | |
| -2 | | | | |
| -4 | | | | |
| -6 | | | | |
| -8 | | | | |
| -10 | | | | |
| -12 | | | | |
| -14 | | | | |
| -16 | | | | |
| -18 | | | | |
| -20 | vein // | | | like 66-2 "dolerite" |
| -22 | | | | |
| -24 | | | | |
| -26 | | | | |
| -28 | | | | |
| -30 | | | | |
| -32 | | | | |
| -34 | | | | |
| -36 | | | | |
| -38 | | | | |
| -40 | | | | |
| -42 | | | | |
| -44 | | | | |
| -46 | | | | |
| -48 | | | | |
| -50 | | | | |
| -52 | | | | |
| -54 | | | | |
| -56 | | | | |
| -58 | | | | |
| -60 | | | | |
| -62 | | | | |
| -64 | | | | |
| -66 | | | | |
| -68 | | | | |
| -70 | | | | |
| -72 | | | | |
| -74 | | | | |
| -76 | | | | |
| -78 | | | | |
| -80 | | | | |
| -82 | | | | |
| -84 | | | | |
| -86 | vein // | | | |
| -88 | | | | |
| -90 | | | | |
| -92 | | | | |
| -94 | | | | |
| -96 | | | | |
| -98 | | | | |
| -100 | | | | |
| -102 | | | | |
| -104 | | | | |
| -106 | | | | |
| -108 | | | | |
| -110 | | | | |
| -112 | | | | |
| -114 | | | | |
| -116 | | | | |
| -118 | | | | |
| -120 | | | | |
| -122 | | | | |
| -124 | | | | |
| -126 | | | | |
| -128 | | | | |
| -130 | | | | |
| -132 | | | | |
| -134 | | | | |
| -136 | | | | |
| -138 | | | | |
| -140 | | | | |
| -142 | | | | |
| -144 | | | | |
| -146 | | | | |
| -148 | | | | |
| -150 | | | | |
| -152 | | | | |

105

| CM Scale | Drawing/Annotation | Lithology | Logged By: J.G. | Date: 3/6 |
|----------|--------------------|-----------|-----------------|-----------|
| | | | Comments | |
| 0 | | | | |
| 2 | | | | |
| 4 | | | | |
| 6 | | | | |
| 8 | | | | |
| 10 | | | | |
| 12 | | | | |
| 14 | | | | |
| 16 | | | | |
| 18 | | | | |
| 20 | oo | | | |
| 22 | | | | |
| 24 | | | | |
| 26 | | | | |
| 28 | | | | |
| 30 | | | | |
| 32 | | | | |
| 34 | | | | |
| 36 | | | | |
| 38 | oo | | | |
| 40 | | | | |
| 42 | | | | |
| 44 | | | | |
| 46 | | | | |
| 48 | | | | |
| 50 | | | | |
| 52 | | | | |
| 54 | | | | |
| 56 | | | | |
| 58 | | | | |
| 60 | | | | |
| 62 | | | | |
| 64 | | | | |
| 66 | | | | |
| 68 | | | | |
| 70 | | | | |
| 72 | | | | |
| 74 | | | | |
| 76 | | | | |
| 78 | | | | |
| 80 | | | | |
| 82 | | | | |
| 84 | | | | |
| 86 | | | | |
| 88 | thin network | | | |
| 90 | # | | | |
| 92 | | | | |
| 94 | | | | |
| 96 | | | | |
| 98 | | | | |
| 100 | | | | |
| 102 | | | | |
| 104 | | | | |
| 106 | | | | |
| 108 | | | | |
| 110 | | | | |
| 112 | | | | |
| 114 | | | | |
| 116 | | | | |
| 118 | | | | |
| 120 | | | | |
| 122 | | | | |
| 124 | | | | |
| 126 | | | | |
| 128 | | | | |
| 130 | | | | |
| 132 | | | | |
| 134 | | | | |
| 136 | | | | |
| 138 | | | | |
| 140 | | | | |
| 142 | | | | |
| 144 | | | | |
| 146 | | | | |
| 148 | | | | |
| 150 | | | | |
| 152 | | | | |

like 66-2

706

oo

oo

thin network

#

Logged By:

J.G.

Date:

3/6

Drawing/Annotation

Lithology

Comments

CM Scale

0
2
4
6
8
10
12
14
16
18
20
22
24
26
28
30
32
34
36
38
40
42
44
46
48
50
52
54
56
58
60
62
64
66
68
70
72
74
76
78
80
82
84
86
88
90
92
94
96
98
100
102
104
106
108
110
112
114
116
118
120
122
124
126
128
130
132
134
136
138
140
142
144
146
148
150
152

vein network
0-18 cm

TS

like 66-2

08 86

64-115

#

105

Logged By: J.G.

Date: 3/6

Drawing/Annotation

Lithology

Comments

CM Scale

0
-2
-4
-6
-8
-10
-12
-14
-16
-18
-20
-22
-24
-26
-28
-30
-32
-34
-36
-38
-40
-42
-44
-46
-48
-50
-52
-54
-56
-58
-60
-62
-64
-66
-68
-70
-72
-74
-76
-78
-80
-82
-84
-86
-88
-90
-92
-94
-96
-98
-100
-102
-104
-106
-108
-110
-112
-114
-116
-118
-120
-122
-124
-126
-128
-130
-132
-134
-136
-138
-140
-142
-144
-146
-148
-150
-152

20



network

36

36



veins

122

like 66-2

105

Logged By: J.G.

Date: 3/6

CM Scale

0
-2
-4
-6
-8
-10
-12
-14
-16
-18
-20
-22
-24
-26
-28
-30
-32
-34
-36
-38
-40
-42
-44
-46
-48
-50
-52
-54
-56
-58
-60
-62
-64
-66
-68
-70
-72
-74
-76
-78
-80
-82
-84
-86
-88
-90
-92
-94
-96
-98
-100
-102
-104
-106
-108
-110
-112
-114
-116
-118
-120
-122
-124
-126
-128
-130
-132
-134
-136
-138
-140
-142
-144
-146
-148
-150
-152

Drawing/Annotation

Lithology

Comments

0-33 cm li/hc ~~AD~~
66-8
// vein 0-33 cm

705

33-60 cm

70c

CM Scale

0
2
4
6
8
10
12
14
16
18
20
22
24
26
28
30
32
34
36
38
40
42
44
46
48
50
52
54
56
58
60
62
64
66
68
70
72
74
76
78
80
82
84
86
88
90
92
94
96
98
100
102
104
106
108
110
112
114
116
118
120
122
124
126
128
130
132
134
136
138
140
142
144
146
148
150
152

| Drawing/Annotation | Lithology | Comments | Logged By: | Date: |
|-------------------------------|-----------|--|------------|-------|
| <p>0-100 like 10c on 6713</p> | | | | |
| <p>vein 124 cm</p> | | <p>100-110 cm medium grained</p> <p>110-123 coarse grained</p> <p>123-136 medium grain</p> <p>136-146 coarse grained</p> | | |

10c

10b

Logged By:

J.G.

Date:

3/6

Drawing/Annotation

Lithology

Comments

CM Scale

0
-2
-4
-6
-8
-10
-12
-14
-16
-18
-20
-22
-24
-26
-28
-30
-32
-34
-36
-38
-40
-42
-44
-46
-48
-50
-52
-54
-56
-58
-60
-62
-64
-66
-68
-70
-72
-74
-76
-78
-80
-82
-84
-86
-88
-90
-92
-94
-96
-98
-100
-102
-104
-106
-108
-110
-112
-114
-116
-118
-120
-122
-124
-126
-128
-130
-132
-134
-136
-138
-140
-142
-144
-146
-148
-150
-152

} 0-4 coarse grain
} 4-18 medium
} 18-144 coarse
↓

0-24
see before

105

24-~~100~~ 55
see before

10c

55-143
see before

10b

[Handwritten signature]

Logged By: J.G.

Date: 3/6

Drawing/Annotation

Lithology

Comments

CM Scale

0
-2
-4
-6
-8
-10
-12
-14
-16
-18
-20
-22
-24
-26
-28
-30
-32
-34
-36
-38
-40
-42
-44
-46
-48
-50
-52
-54
-56
-58
-60
-62
-64
-66
-68
-70
-72
-74
-76
-78
-80
-82
-84
-86
-88
-90
-92
-94
-96
-98
-100
-102
-104
-106
-108
-110
-112
-114
-116
-118
-120
-122
-124
-126
-128
-130
-132
-134
-136
-138
-140
-142
-144
-146
-148
-150
-152

See 105 on lower portion of 67-5 above

||| 74-90

105

Logged By: J.C.

Date: 3/6

Drawing/Annotation

Lithology

Comments

CM Scale

-0
-2
-4
-6
-8
-10
-12
-14
-16
-18
-20
-22
-24
-26
-28
-30
-32
-34
-36
-38
-40
-42
-44
-46
-48
-50
-52
-54
-56
-58
-60
-62
-64
-66
-68
-70
-72
-74
-76
-78
-80
-82
-84
-86
-88
-90
-92
-94
-96
-98
-100
-102
-104
-106
-108
-110
-112
-114
-116
-118
-120
-122
-124
-126
-128
-130
-132
-134
-136
-138
-140
-142
-144
-146
-148
-150
-152

See 67R 6

106

vein network

CM Scale

0
-2
-4
-6
-8
-10
-12
-14
-16
-18
-20
-22
-24
-26
-28
-30
-32
-34
-36
-38
-40
-42
-44
-46
-48
-50
-52
-54
-56
-58
-60
-62
-64
-66
-68
-70
-72
-74
-76
-78
-80
-82
-84
-86
-88
-90
-92
-94
-96
-98
-100
-102
-104
-106
-108
-110
-112
-114
-116
-118
-120
-122
-124
-126
-128
-130
-132
-134
-136
-138
-140
-142
-144
-146
-148
-150
-152

Drawing/Annotation

Lithology

Logged By: 2.6

Date: 3/6

Comments

vein network
0-33

See 67R 7 above

105

vein network
116-125

CM Scale

0
-2
-4
-6
-8
-10
-12
-14
-16
-18
-20
-22
-24
-26
-28
-30
-32
-34
-36
-38
-40
-42
-44
-46
-48
-50
-52
-54
-56
-58
-60
-62
-64
-66
-68
-70
-72
-74
-76
-78
-80
-82
-84
-86
-88
-90
-92
-94
-96
-98
-100
-102
-104
-106
-108
-110
-112
-114
-116
-118
-120
-122
-124
-126
-128
-130
-132
-134
-136
-138
-140
-142
-144
-146
-148
-150
-152

| Drawing/Annotation | Lithology | Logged By: J.E. | Date: 6/3 |
|---|-----------|--|-----------|
| | | Comments | |
| <p>7-3 cm chert fall-in!</p> <p>// var 49-53</p> <p>// var 68-85</p> <p>still doleritic but no large epidioritic. Back to original description of 10a 6% feldspar + 4% ol</p> | | <p>0-100 = 105</p> <p>See 67R-8 but back to <u>medium grained</u></p> <p>100-130 medium grained "coarser" grained version of 10a</p> <p>kind of a mixture of 10b and 10a but has more feldspar glaucophane- crysts and no more ol- aggregates so overall its more like 10a (just coarser grained than in 657) but is <u>officially</u> medium grained</p> | |

105

10a

| CM Scale | Drawing/Annotation | Lithology | Logged By: | Date: |
|--|--------------------|-----------|------------|---|
| | | | Comments | |
| 0 -2 -4 -6 -8 -10 -12 -14 -16 -18 -20 -22 -24 -26 -28 -30 -32 -34 -36 -38 -40 -42 -44 -46 -48 -50 -52 -54 -56 -58 -60 -62 -64 -66 -68 -70 -72 -74 -76 -78 -80 -82 -84 -86 -88 -90 -92 -94 -96 -98 -100 -102 -104 -106 -108 -110 -112 -114 -116 -118 -120 -122 -124 -126 -128 -130 -132 -134 -136 -138 -140 -142 -144 -146 -148 -150 -152 | // 5-12a | | | |
| | | | | <p>like 68R-1 (lower part of Unit 10a)</p> <p>Still a transition between 10a and 10b</p> <p style="text-align: center;">10a</p> |
| | // 68-77 | | | |
| | // 112-113 | | | |
| | // 136-144 | | | |

Logged By: Jb.

Date: 3/6

CM Scale

0
-2
-4
-6
-8
-10
-12
-14
-16
-18
-20
-22
-24
-26
-28
-30
-32
-34
-36
-38
-40
-42
-44
-46
-48
-50
-52
-54
-56
-58
-60
-62
-64
-66
-68
-70
-72
-74
-76
-78
-80
-82
-84
-86
-88
-90
-92
-94
-96
-98
-100
-102
-104
-106
-108
-110
-112
-114
-116
-118
-120
-122
-124
-126
-128
-130
-132
-134
-136
-138
-140
-142
-144
-146
-148
-150
-152

Drawing/Annotation

Lithology

Comments

// 47-62

83-111
//

0-96 cm
like 68R2
medium

96-124
medium

10a

10c
chickens
fox

Logged By:

J.G.

Date:

6/3

CM Scale

0
-2
-4
-6
-8
-10
-12
-14
-16
-18
-20
-22
-24
-26
-28
-30
-32
-34
-36
-38
-40
-42
-44
-46
-48
-50
-52
-54
-56
-58
-60
-62
-64
-66
-68
-70
-72
-74
-76
-78
-80
-82
-84
-86
-88
-90
-92
-94
-96
-98
-100
-102
-104
-106
-108
-110
-112
-114
-116
-118
-120
-122
-124
-126
-128
-130
-132
-134
-136
-138
-140
-142
-144
-146
-148
-150
-152

Drawing/Annotation

Lithology

Comments

0-11

like 10c on 68-3

10c

11-30

like 10a on 68-3

10a

End of Hole !

THIN SECTION LABEL ID: 392-U1580A-45R-2-W 70/72-TSB-TS 12

Thin section no.:

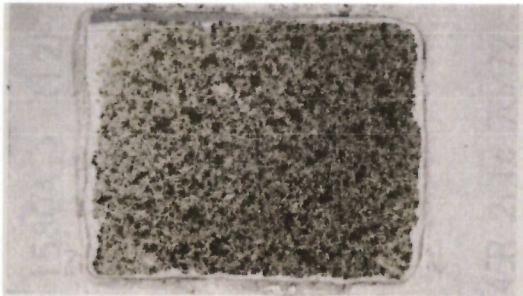
Observer: PD

Piece no.:

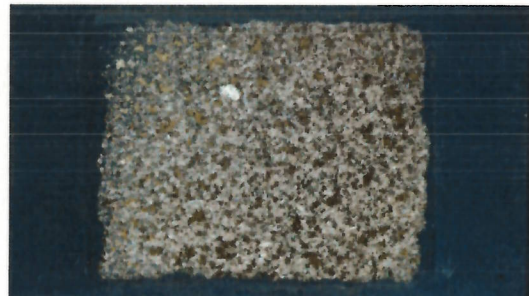
Unit/subunit: 1

Thin section summary:

Plane-polarized:



Cross-polarized:



Igneous Petrology

Lithology: *plag ol basalt*

Groundmass grain size (avg.)



Texture 1: *porphyritic*

Texture 2:

| Phenocrysts | Original (%) | Replaced (%) | Size mode (mm) | Size max. (mm) | Shape | Comments |
|----------------|--------------|--------------|----------------|----------------|----------------------------------|--------------|
| <i>Olivine</i> | <i>8%</i> | <i>100</i> | <i>1.5</i> | <i>1</i> | <i>Subhedral</i> | |
| <i>Plag</i> | <i>17%</i> | <i>20</i> | <i>1.5</i> | <i>1.5</i> | <i>En¹⁰⁰Subhedral</i> | <i>zoned</i> |
| | | | | | | |
| | | | | | | |

| Groundmass | Original (%) | Replaced (%) | Size mode (mm) | Shape | Comments |
|---------------|--------------|--------------|----------------|------------------|--------------------|
| <i>Plag</i> | <i>50</i> | <i>20</i> | <i>0.4</i> | <i>Equiaxed</i> | <i>spherulitic</i> |
| <i>Ol</i> | <i>25</i> | <i>100</i> | <i>0.25</i> | <i>Subhedral</i> | |
| <i>Cpx</i> | <i>20</i> | <i>80</i> | <i>0.15</i> | <i>Anhedral</i> | |
| <i>oxides</i> | <i>5</i> | <i>0</i> | <i>0.1</i> | <i>Subhedral</i> | |
| | | | | | |

| Vesicle | Original (%) | Filled (%) | Size mode (mm) | Size max. (mm) | Shape | Comments |
|----------------|--------------|------------|----------------|----------------|-------|----------|
| <i>Vesicle</i> | <i>0</i> | | | | | |

THIN SECTION LABEL ID: 392-U1580A-45R-1-W 130/133-TSB-TS 11

Thin section no.:

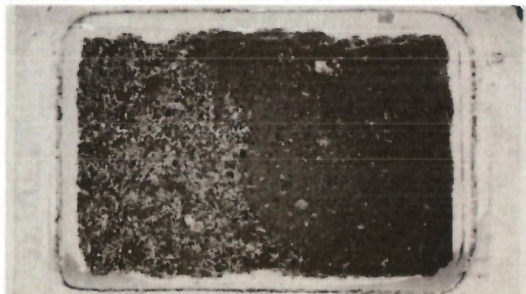
Observer: PD

Piece no.:

Unit/subunit: 1

Thin section summary:

Plane-polarized:



Cross-polarized:



Igneous Petrology

Lithology:

basalt

highly altered

Groundmass grain size (avg.)

Texture 1:

fine grained matrix (ply + oxides) with 6% plagiophenos + larger phyllosilicates replacing ol? cpx?

Texture 2:

subophitic plagi in altered px

| Phenocrysts | Original (%) | Replaced (%) | Size mode (mm) | Size max. (mm) | Shape | Comments |
|-----------------|--------------|--------------|----------------|----------------|-------|--------------|
| Phyllosilicates | 5 | 100 | 1 | 1 | Sub | replaced ol? |
| | | | | | | |
| | | | | | | |

| Groundmass | Original (%) | Replaced (%) | Size mode (mm) | Shape | Comments |
|-----------------|--------------|--------------|----------------|--------|---------------------------|
| plagi | 42 | 25 | 0.1 | Gr-Sub | 1/2 av. 0.2, 1/2 av. 0.05 |
| oxides | 8 | 0 | .05 | Sub | 1/2 av 0.1, 1/2 av 0.01 |
| phyllosilicates | 47 | 100 | | An | replacing unknown mins |
| ol? | 25 | 100 | | | |
| cpx? | 25 | 100 | | | |

| Vesicle | Original (%) | Filled (%) | Size mode (mm) | Size max. (mm) | Shape | Comments |
|---------|--------------|------------|----------------|----------------|-------|----------|
| Vesicle | 0 | | | | | |

THIN SECTION LABEL ID: 392-U1580A-47R-2-W 54/57-TSB-TS 14

Observer: PD

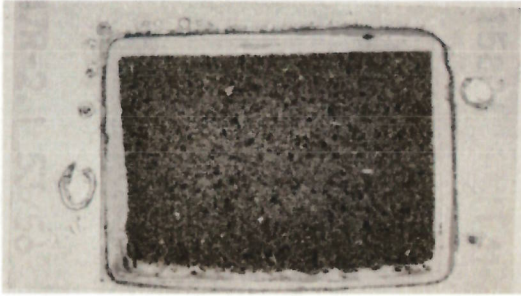
Thin section no.:

Piece no.:

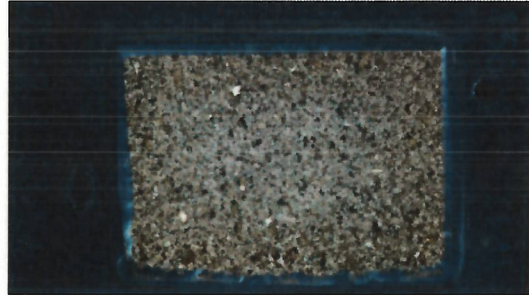
Unit/subunit: 2

Thin section summary:

Plane-polarized:



Cross-polarized:



Igneous Petrology

Lithology: basalt

Groundmass grain size (avg.) fine grained

Texture 1: aphyric

highly altered

Texture 2:

| Phenocrysts | Original (%) | Replaced (%) | Size mode (mm) | Size max. (mm) | Shape | Comments |
|-------------------|--------------|--------------|----------------|----------------|----------------------------------|----------|
| plag | 7 | 0 | 1.5 | 1.5 | subhedral | |
| Oxides | 8 | 0 | 1 | 0.8 | skeletal-antidioritic | |
| | | | | | | |
| | | | | | | |

| Groundmass | Original (%) | Replaced (%) | Size mode (mm) | Shape | Comments |
|------------|--------------|--------------|----------------|--------|--|
| oxides | 5 | 0 | 0.3 | Sub | |
| Plag | 40 | 20 | 0.15 | En-Sub | |
| Cpx | 20 | 90 | 0.1 | An | highly altered, interstitial intergranular between plag |
| altered | 35 | | | | |
| | | | | | |
| | | | | | |

| Vesicle | Original (%) | Filled (%) | Size mode (mm) | Size max. (mm) | Shape | Comments |
|---------|--------------|------------|----------------|----------------|-------|----------|
| Vesicle | 0 | | | | | |

THIN SECTION LABEL ID: 392-U1580A-48R-5-W 35/37-TSB-TS 15

Observer:

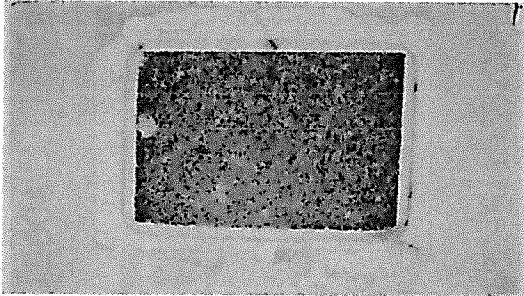
Thin section no.:

Piece no.:

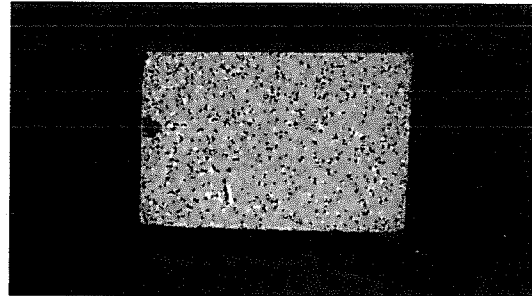
Unit/subunit: 3

Thin section summary:

Plane-polarized:



Cross-polarized:



Igneous Petrology

Lithology:

Groundmass grain size (avg.)

Texture 1:

Texture 2:

| Phenocrysts | Original (%) | Replaced (%) | Size mode (mm) | Size max. (mm) | Shape | Comments |
|----------------|--------------|--------------|----------------|----------------|----------|----------|
| Cpx | 1 | 75 | 1.5 | 1.5 | Anhedrat | |
| Plag | 1 | 20 | 1.5 | 1.5 | Euhedral | |
| | | | | Ph | | |

| Groundmass | Original (%) | Replaced (%) | Size mode (mm) | Shape | Comments |
|------------|--------------|--------------|----------------|--------------|-------------------------|
| plag | 45 | 10 | 0.25 | Euhedral-Sub | |
| Ol | 15 | 100 | 0.3 | Euhedral-Sub | Ph |
| Cpx | 35 | 15 | 0.2 | An | some subophitic texture |
| oxides | 5 | 0 | 0.1 | Sub | |

| Vesicle | Original (%) | Filled (%) | Size mode (mm) | Size max. (mm) | Shape | Comments |
|---------|--------------|------------|----------------|----------------|-------|----------|
| Vesicle | 0 | | | | | |

THIN SECTION LABEL ID: 392-U1580A-50R-1-W 12/15-TSB-TS 16

Observer: PD

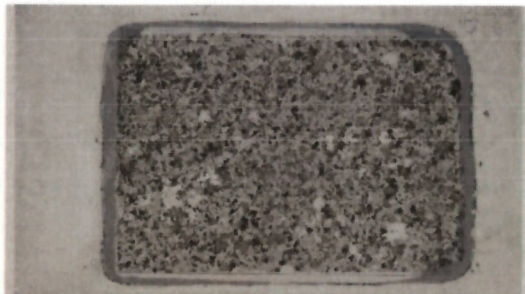
Thin section no.:

Piece no.:

Unit/subunit: 5

Thin section summary:

Plane-polarized:



Cross-polarized:



Igneous Petrology

Lithology: *plag-ol phyric basalt*

Groundmass grain size (avg.) *medium*

Texture 1: *glomeroporphyritic*

Texture 2: *mod. phyric*

| Phenocrysts | Original (%) | Replaced (%) | Size mode (mm) | Size max. (mm) | Shape | Comments |
|-------------|--------------|--------------|-----------------------|----------------|---------------|---|
| <i>Plag</i> | <i>5</i> | <i>5</i> | <i>1.5</i> | <i>2</i> | <i>En-Sub</i> | <i>glomerocrysts</i> |
| <i>Ol</i> | <i>7</i> | <i>100</i> | <i>1.5</i> | <i>2</i> | <i>En</i> | <i>100% replaced, nice pseudomorphs</i> |
| | | | | | | |

| Groundmass | Original (%) | Replaced (%) | Size mode (mm) | Shape | Comments |
|---------------|--------------|--------------|----------------|---------------|---|
| <i>Plag</i> | <i>45</i> | <i>5</i> | <i>0.5</i> | <i>En-Sub</i> | |
| <i>Cpx</i> | <i>20</i> | <i>30</i> | <i>0.25</i> | <i>An</i> | |
| <i>Ol</i> | <i>30</i> | <i>100</i> | <i>0.25</i> | <i>Sub</i> | <i>could also just be interstitial mins that are replaced</i> |
| <i>Oxides</i> | <i>5</i> | <i>0</i> | <i>0.2</i> | <i>Sub</i> | |
| | | | | | |

| Vesicle | Original (%) | Filled (%) | Size mode (mm) | Size max. (mm) | Shape | Comments |
|----------------|--------------|------------|----------------|----------------|-------|----------|
| <i>Vesicle</i> | <i>0</i> | | | | | |

THIN SECTION LABEL ID: 392-U1580A-53R-2-W 75/77-TSB-TS 18

Thin section no.:

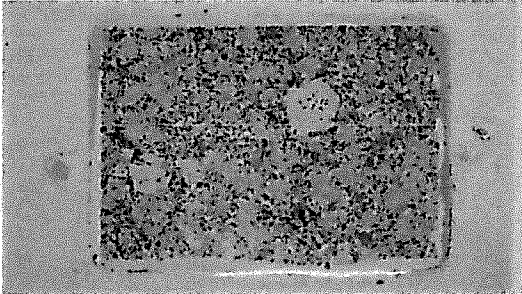
Observer: *PD*

Piece no.:

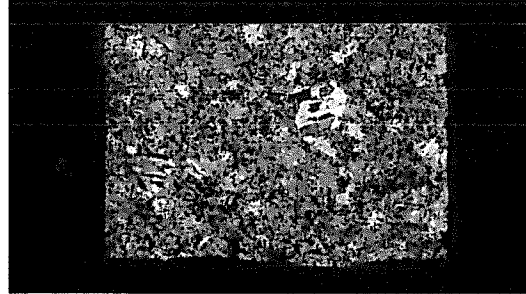
Thin section summary:

Unit/subunit: *7*

Plane-polarized:



Cross-polarized:



Igneous Petrology

Lithology:

Groundmass grain size *med.*
(avg.)

Texture 1: *Subophitic*

Texture 2: *mod. phytic*

| Phenocrysts | Original (%) | Replaced (%) | Size mode (mm) | Size max. (mm) | Shape | Comments |
|-------------|--------------|--------------|----------------|----------------|----------------|--|
| <i>Plag</i> | <i>6</i> | <i>0</i> | <i>4.5</i> | <i>5</i> | <i>Sub-Sub</i> | <i>many twinning planes, almost glomerate crystals</i> |
| | | | | | | |
| | | | | | | |

| Groundmass | Original (%) | Replaced (%) | Size mode (mm) | Shape | Comments |
|---------------|----------------------|--------------|----------------|---------------|-------------------|
| <i>Cpx</i> | <i>10</i> | <i>10</i> | <i>2.5</i> | <i>An</i> | <i>Subophitic</i> |
| <i>Plag</i> | <i>35</i> | <i>5</i> | <i>0.6</i> | <i>Eu-Sub</i> | |
| <i>Ol</i> | <i>30</i> | <i>100</i> | <i>1</i> | <i>Sub</i> | |
| <i>oxides</i> | <i>5</i> | <i>0</i> | <i>0.4</i> | <i>Sub</i> | |
| | | | | | |

| Vesicle | Original (%) | Filled (%) | Size mode (mm) | Size max. (mm) | Shape | Comments |
|----------------|--------------|------------|----------------|----------------|-------|----------|
| <i>Vesicle</i> | <i>0</i> | | | | | |

THIN SECTION LABEL ID: 392-U1580A-52R-2-W 132/135-TSB-TS 17

Thin section no.:

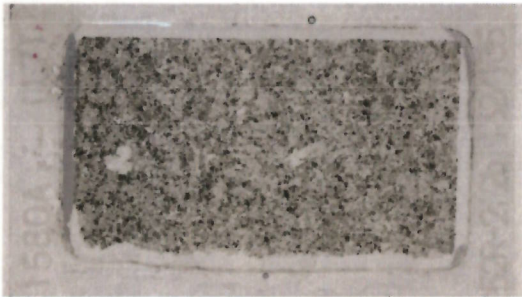
Observer: PD

Piece no.:

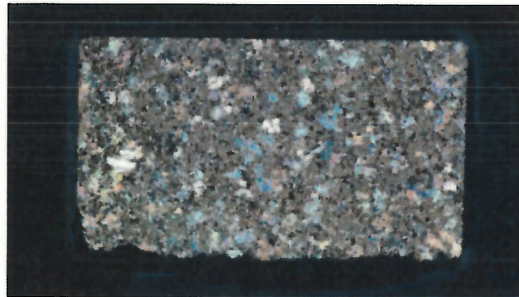
Thin section summary:

Unit/subunit: 7

Plane-polarized:



Cross-polarized:



Igneous Petrology

Lithology: Plag-phyric basalt

Groundmass grain size (avg.) med.

Texture 1: Subophitic

Texture 2:

relatively good preserved
(moderate to slight)

| Phenocrysts | Original (%) | Replaced (%) | Size mode (mm) | Size max. (mm) | Shape | Comments |
|----------------|--------------|--------------|----------------|----------------|-------|------------|
| Cpx | | | | | | |
| Plag | 2 | 5 | 3 | 3 | Enh | Subophitic |
| | | | | | | |
| | | | | | | |

| Groundmass | Original (%) | Replaced (%) | Size mode (mm) | Shape | Comments |
|------------|--------------|--------------|----------------|----------|------------|
| Cpx | 35 | 5 | 1.5 | Anhedral | Subophitic |
| Plag | 40 | 5 | 0.5 | Eu-Sub | |
| Ol | 20 | 100 | 0.4 | Sub | |
| oxides | 5 | 0 | 0.2 | Sub | |
| | | | | | |

| Vesicle | Original (%) | Filled (%) | Size mode (mm) | Size max. (mm) | Shape | Comments |
|---------|--------------|------------|----------------|----------------|-------|----------|
| Vesicle | 0 | | | | | |

mesostasis completely replaced
I believe this was also px (40%)

THIN SECTION LABEL ID: 392-U1580A-59R-1-W 143/146-TSB-TS 19

Observer: PD

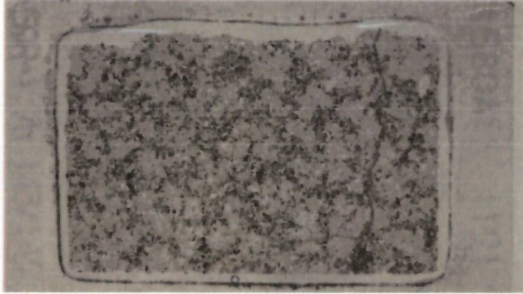
Thin section no.:

Piece no.:

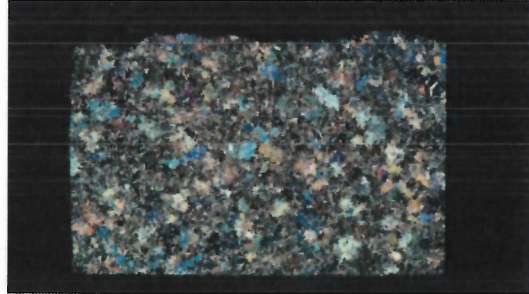
Unit/subunit: 8

Thin section summary:

Plane-polarized:



Cross-polarized:



Igneous Petrology *subophitic*

Lithology: *Basalt*

Groundmass grain size (avg.) *medium grained*

Texture 1: *subophitic*

Texture 2:

moderately to slightly altered

| Phenocrysts | Original (%) | Replaced (%) | Size mode (mm) | Size max. (mm) | Shape | Comments |
|-------------|--------------|--------------|----------------|----------------|-------|----------|
| | | | | | | |
| | | | | | | |
| | | | | | | |
| | | | | | | |

| Groundmass | Original (%) | Replaced (%) | Size mode (mm) | Shape | Comments |
|--------------------------|--------------|--------------|----------------|---------------|---------------------------|
| <i>Cpx</i> | <i>35</i> | <i>0</i> | <i>2</i> | <i>An</i> | <i>Subophitic texture</i> |
| <i>Plag</i> | <i>35</i> | <i>0</i> | <i>0.4</i> | <i>En-Sub</i> | |
| <i>Oxides</i> | <i>5</i> | <i>0</i> | <i>0.15</i> | <i>Sub</i> | |
| <i>Ol? Pl</i> | <i>25</i> | <i>95</i> | <i>0.2</i> | <i>Sub</i> | |
| | | | | | |
| | | | | | |

| Vesicle | Original (%) | Filled (%) | Size mode (mm) | Size max. (mm) | Shape | Comments |
|----------------|--------------|------------|----------------|----------------|-------|----------|
| <i>Vesicle</i> | <i>0</i> | | | | | |

THIN SECTION LABEL ID: 392-U1580A-63R-5-W 1/4-TSB-TS 20

Observer: PD

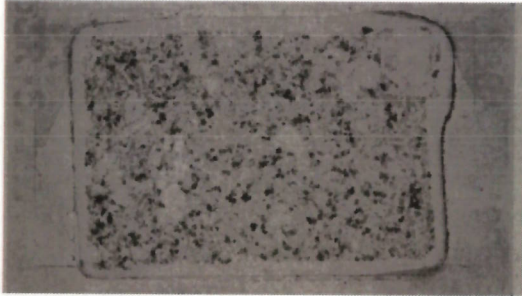
Thin section no.:

Piece no.:

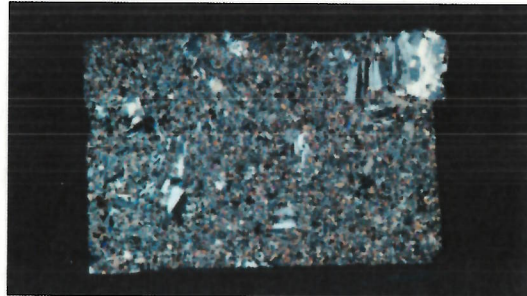
Unit/subunit: 10a

Thin section summary:

Plane-polarized:



Cross-polarized:



Igneous Petrology

Lithology: plagioclase phyric basalt

Groundmass grain size (avg.) med.

Texture 1: glomerophyric

Texture 2:

| Phenocrysts | Original (%) | Replaced (%) | Size mode (mm) | Size max. (mm) | Shape | Comments |
|---------------|--------------|----------------|----------------|----------------|----------------------|-------------------------------|
| Plag | 8 | 0 | 0.4 | 0.6 | Sub | glomerocrysts |
| Ol | 2 | 100 | 2 | 3 | subhedral | (totally replaced) |

| Groundmass | Original (%) | Replaced (%) | Size mode (mm) | Shape | Comments |
|------------|--------------|--------------|----------------|--------|-------------------------------------|
| plag | 45 | 0 | 0.6 | En-Sub | |
| cpx | 25 | 0 | 0.2 | Sub | |
| oxides | 5 | 0 | 0.2 | Sub | |
| Ol | 10 | 100 | 0.2 | Enh | perfect chloritized Ol pseudomorphs |
| alteration | 15 | 100 | | An | space-filling (microstasis) |

| Vesicle | Original (%) | Filled (%) | Size mode (mm) | Size max. (mm) | Shape | Comments |
|---------|--------------|------------|----------------|----------------|-------|----------|
| Vesicle | 0 | | | | | |

preservation does not look so bad! slight to moderate

THIN SECTION LABEL ID: 392-U1580A-66R-3-W 0/3-TSB-TS 22

Observer: AD

Thin section no.:

Piece no.:

Unit/subunit: 10b

Thin section summary:

Plane-polarized:



Cross-polarized:



Igneous Petrology

Lithology: dolerite

Groundmass grain size (avg.) coarse

Texture 1:

Texture 2:

| Phenocrysts | Original (%) | Replaced (%) | Size mode (mm) | Size max. (mm) | Shape | Comments |
|-------------|--------------|--------------|----------------|----------------|-------|--|
| | | | | | | at least in this TS I don't see ol phenos (only in groundmass) |
| | | | | | | |
| | | | | | | |

| Groundmass | Original (%) | Replaced (%) | Size mode (mm) | Shape | Comments |
|------------|--------------|--------------|----------------|--------|-----------------------------|
| Plag | 35 | 5 | 2.5 | Sub | |
| Cpx | 25 | 25 | 2 | Sub | |
| Ol | 20 | 100 | 2 | fn-Sub | nice pseudomorphs (Jagose') |
| oxides | 8 | 0 | 1.5 | Sub | |
| alteration | 12 | | | | interstitial |

| Vesicle | Original (%) | Filled (%) | Size mode (mm) | Size max. (mm) | Shape | Comments |
|---------|--------------|------------|----------------|----------------|-------|----------|
| Vesicle | 0 | | | | | |

THIN SECTION LABEL ID: 392-U1580A-67R-1-W 23/26-TSB-TS 23

Observer: PD

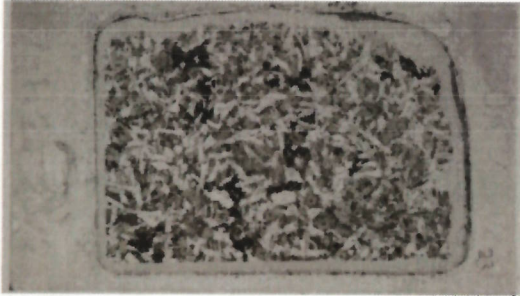
Thin section no.:

Piece no.:

Unit/subunit: 10b

Thin section summary:

Plane-polarized:



Cross-polarized:



Igneous Petrology

Lithology: dolerite

Groundmass grain size (avg.) coarse

Texture 1:

Texture 2:

| Phenocrysts | Original (%) | Replaced (%) | Size mode (mm) | Size max. (mm) | Shape | Comments |
|-------------|--------------|--------------|----------------|----------------|-------|---|
| | | | | | | well, there are patchy areas which could have been large olivine... |
| | | | | | | |
| | | | | | | |

| Groundmass | Original (%) | Replaced (%) | Size mode (mm) | Shape | Comments |
|------------|--------------|--------------|----------------|-------|---------------|
| Plag | 40 | 5 | 2 | Sub | |
| cpx | 25 | 20 | 1.5 | Sub | |
| alteration | 25 | | | | interstitial |
| oxides | 5 | 0 | 1.5 | Sub | |
| ol | 5 | 100 | 0.6 | AN | O.K. I agree! |

| Vesicle | Original (%) | Filled (%) | Size mode (mm) | Size max. (mm) | Shape | Comments |
|---------|--------------|------------|----------------|----------------|-------|----------|
| Vesicle | 0 | | | | | |

highly altered!

THIN SECTION LABEL ID: 392-U1580A-65R-2-W 119/122-TSB-TS 21

Observer: PD

Thin section no.:

Piece no.:

Unit/subunit: 10c

Thin section summary:

Plane-polarized:



Cross-polarized:



Igneous Petrology

Lithology: subophitic basalt (dolesite?)

Groundmass grain size coarse (avg.)

Texture 1: Subophitic

Texture 2:

| Phenocrysts | Original (%) | Replaced (%) | Size mode (mm) | Size max. (mm) | Shape | Comments |
|-------------|--------------|--------------|----------------|----------------|----------|---|
| Ol | 3 | 100 | 3 | 2 | anhedral | (totally replaced, also subophitic subophitic enclosing plagioclase) |
| | | | | | | |
| | | | | | | |

| Groundmass | Original (%) | Replaced (%) | Size mode (mm) | Shape | Comments |
|------------|--------------|----------------|----------------|--------|---------------|
| Plag | 30 | 20 | 1 | Eq-Sub | |
| Cpx | 40 | 5 | 8 | An | subophitic |
| oxides | 5 | 0 | 0.4 | Sub | |
| a | 10 | 90 | 0.4 | An | |
| alteration | 15 | 100 | | | space filling |

| Vesicle | Original (%) | Filled (%) | Size mode (mm) | Size max. (mm) | Shape | Comments |
|---------|--------------|------------|----------------|----------------|-------|----------|
| Vesicle | 0 | | | | | |

slight to considerable alteration