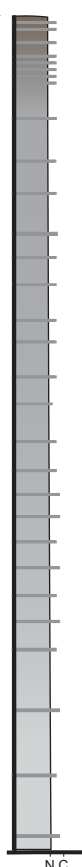
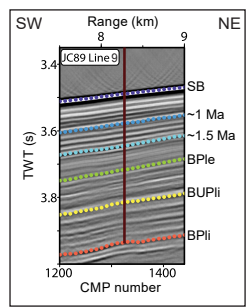


Schematic lithology



— Clay bed N Nannofossil ooze
C Clay



Lithologic units and interpretations

Hemipelagic deposition with cycles of light gray (nannofossil ooze) and darker gray (more clay rich) sediments. Darker brown in color and more clay rich (increased terrigenous input) at top of the holes. Light gray and less clay rich (less terrigenous input) at the base of the holes.

Lith. unit