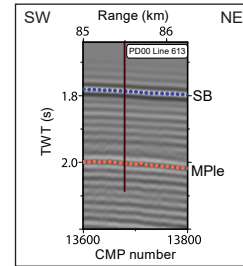
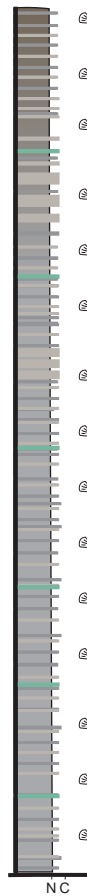


**Schematic lithology**



**Lithologic units and interpretations**

Hemipelagic deposition with cycles dominated by gray to brown (nannofossil ooze) with minor darker gray/brown (more clay rich) sediments and lighter brown/ beige (more carbonate rich) sediments. Rare greenish layers are present at terminations of glacial periods and have increased biosilica (5%-25%).



Lith. unit