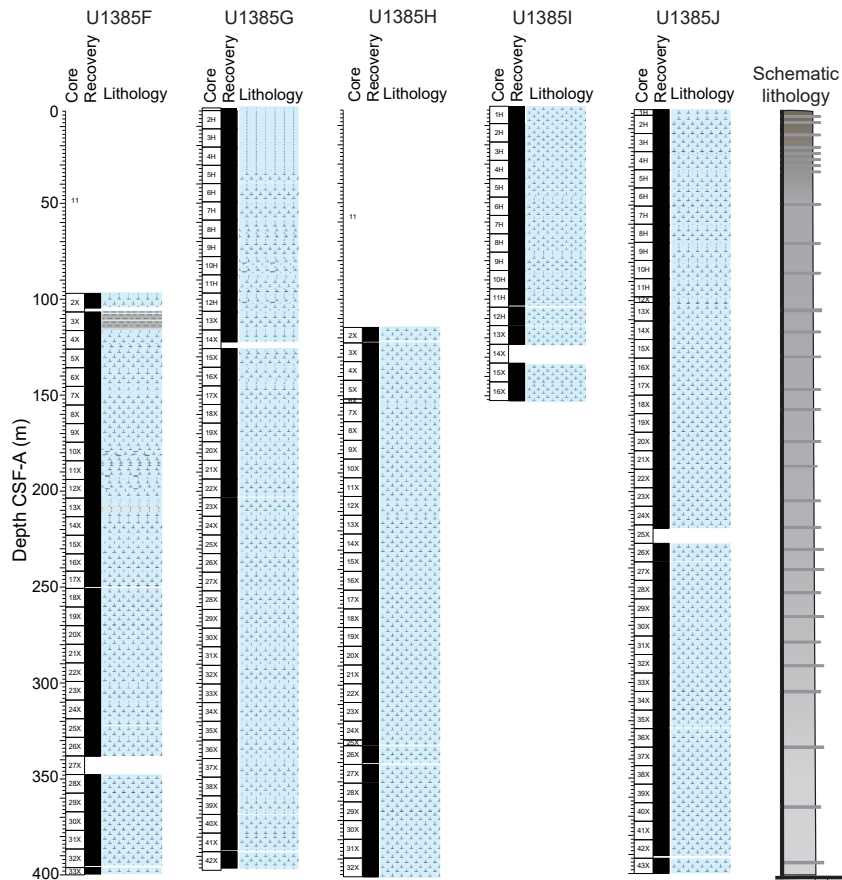
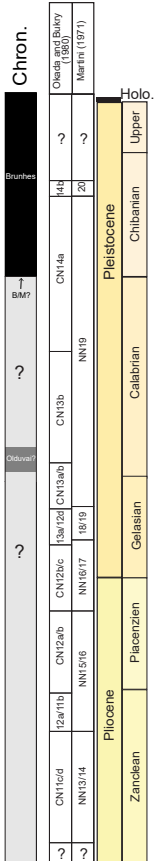
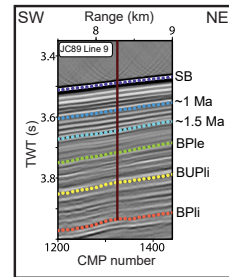


Magneto- and bio-stratigraphy



Nannofossil ooze  
 Clay  
 Clay bed  
 N = Nannofossil ooze  
 C = Clay



Lith. unit and interpretations

Hemipelagic deposition with cycles of light gray (nannofossil ooze) and darker gray (more clay-rich) sediments. Darker brown in color and more clay-rich (increased terrigenous input) at top of the holes. Light gray and less clay rich (less terrigenous input) at the base of the holes.

Lith. unit