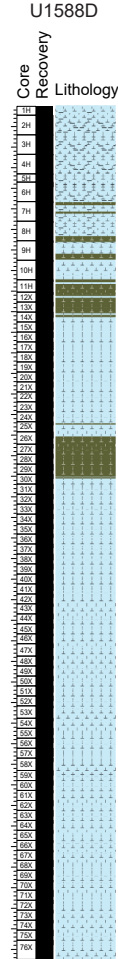
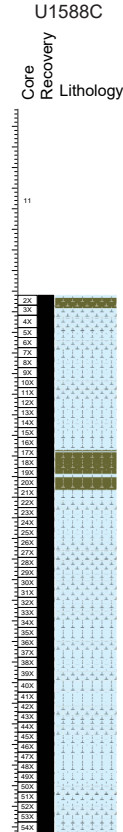
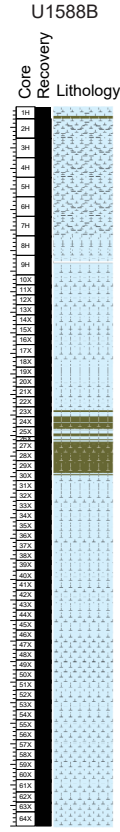
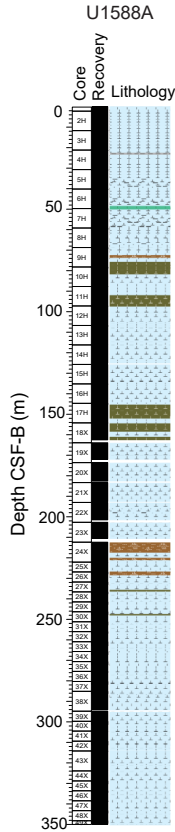
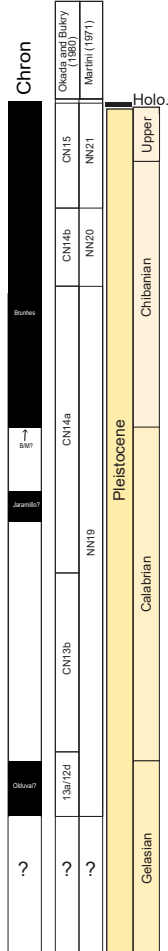
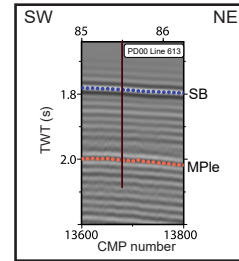
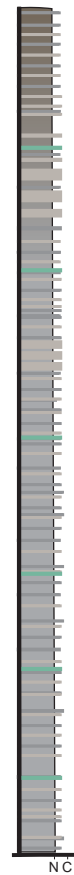


Magneto- and bio-stratigraphy



Schematic lithology



Lith. unit and interpretations

Hemipelagic deposition with cycles dominated by gray to brown (nannofossil ooze) with minor darker gray/brown (more clay-rich) sediments and lighter brown/beige (more carbonate-rich) sediments. Rare greenish layers are present at terminations of glacial periods and have increased biosilica (5%-25%).

- Nannofossil ooze
- Carbonate nannofossil ooze
- Clayey carbonate
- Nannofossil carbonate
- Clay bed
- Carbonate bed
- Biosilica 5%-25%
- N = Nannofossil ooze
- C = Clay/carbonate
- Shell/foraminifer fragments

Lith. unit