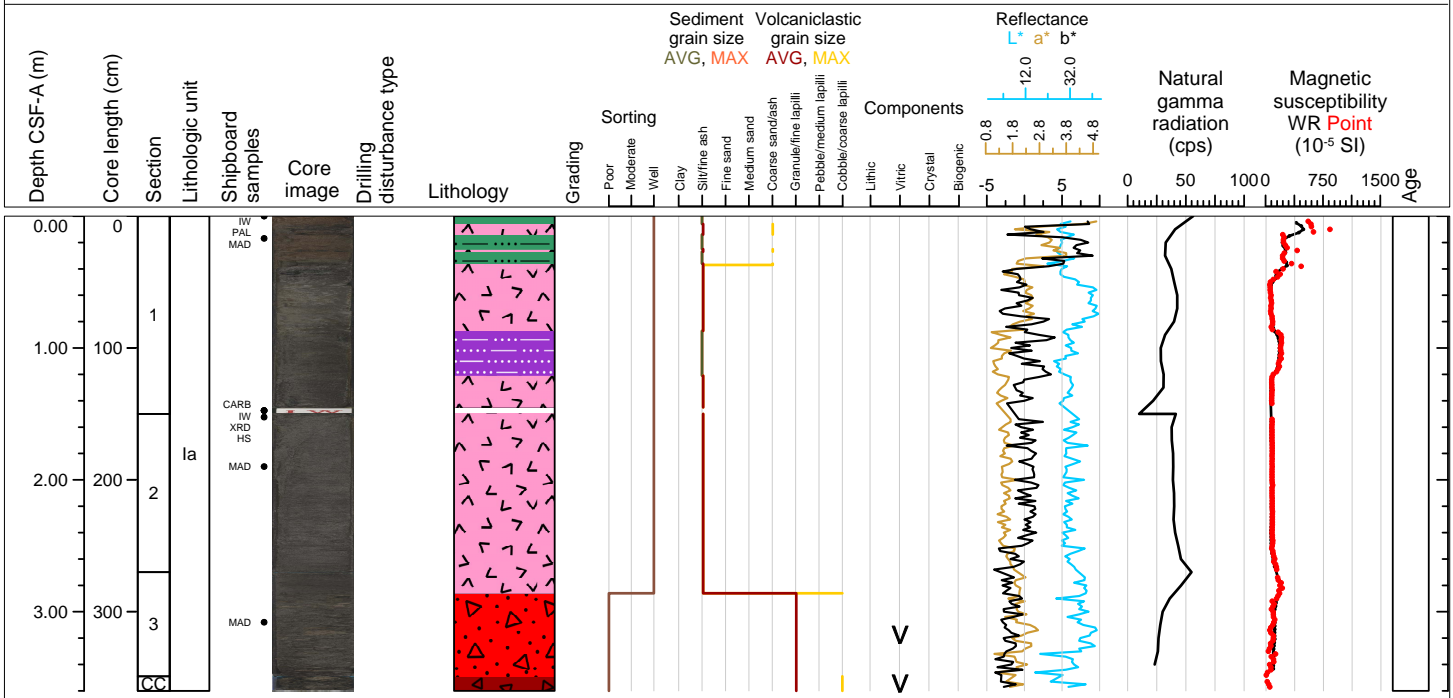
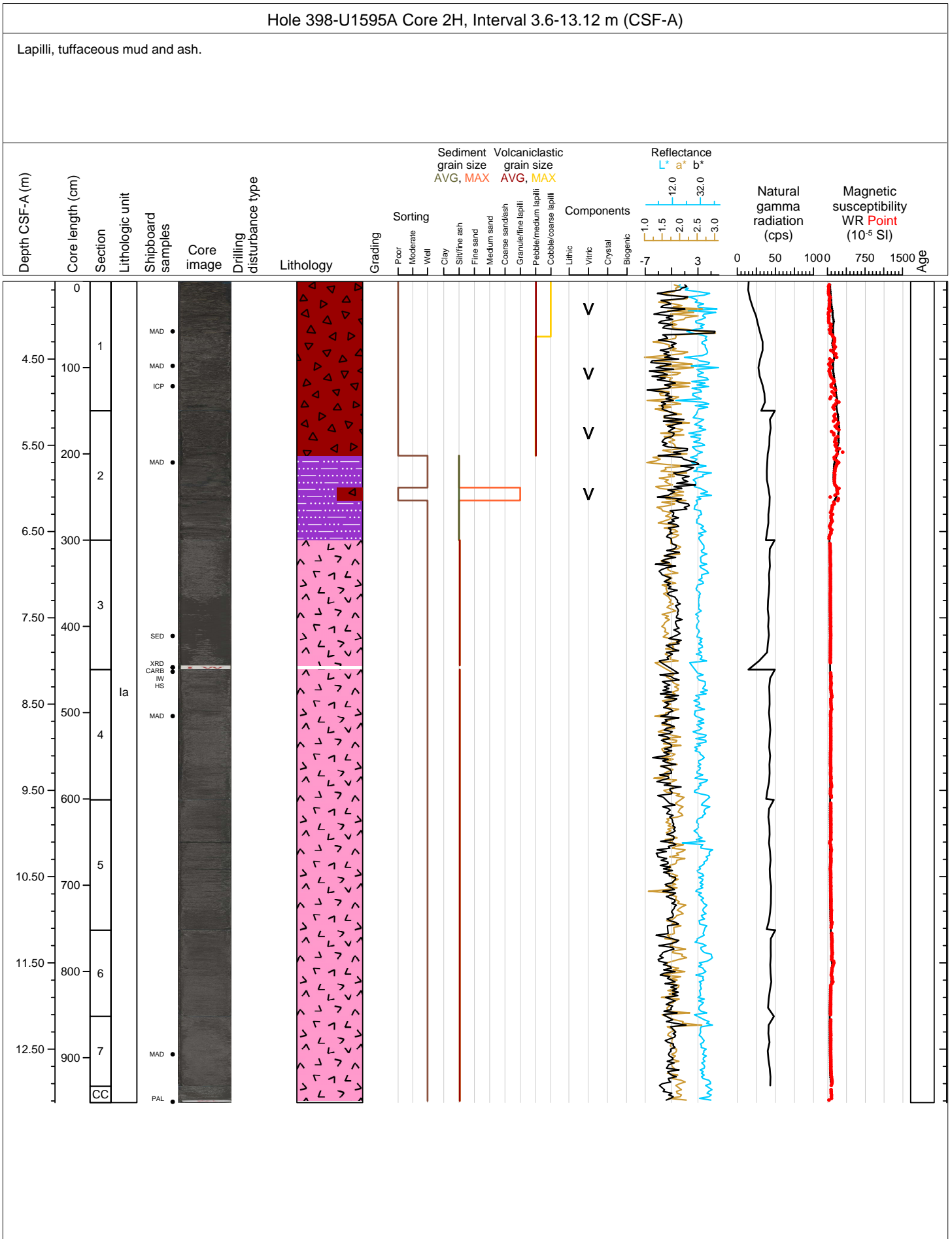


Hole 398-U1595A Core 1H, Interval 0.0-3.6 m (CSF-A)

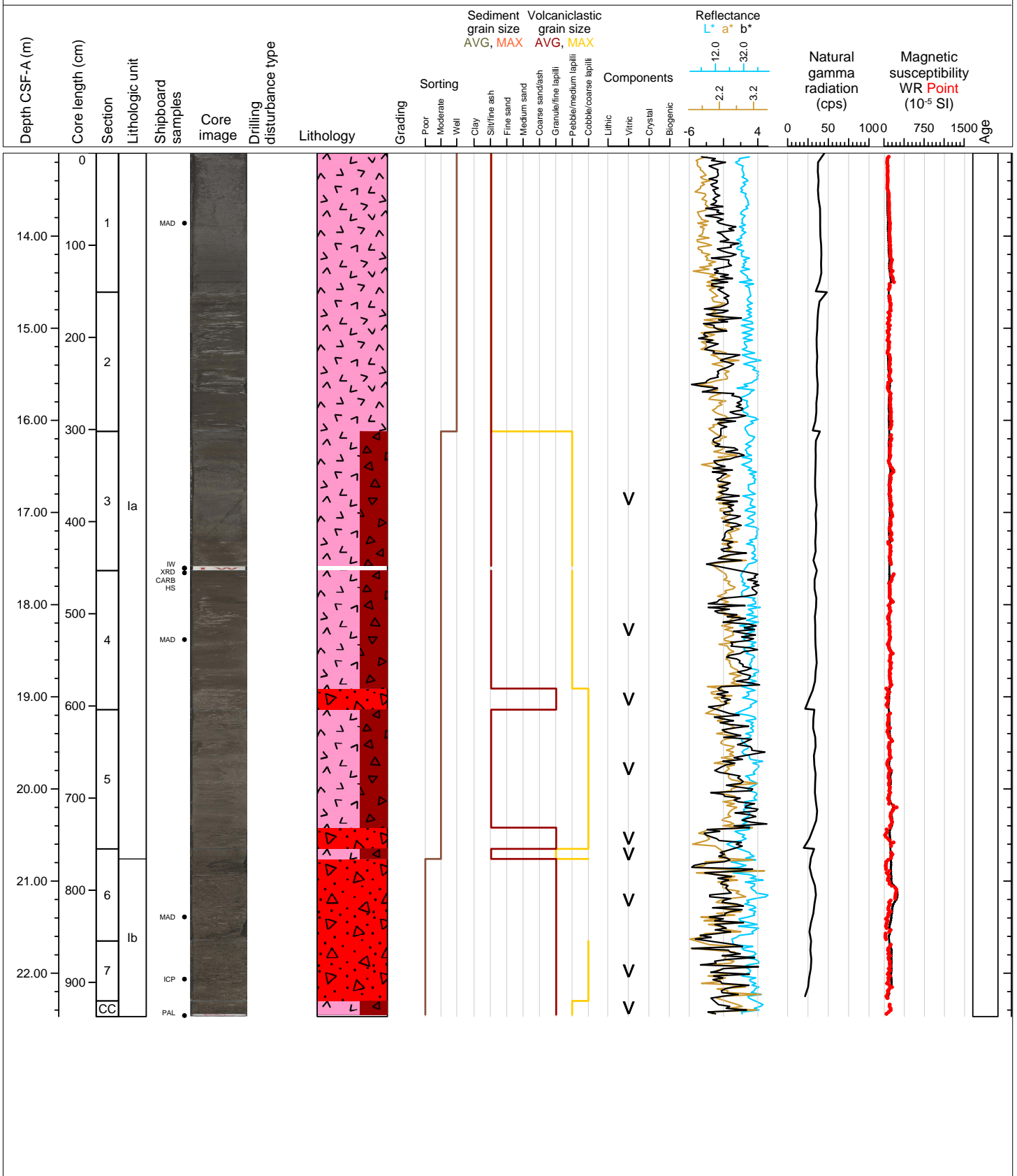
Mud, ash, tuffaceous mud, lapilli-ash and lapilli.





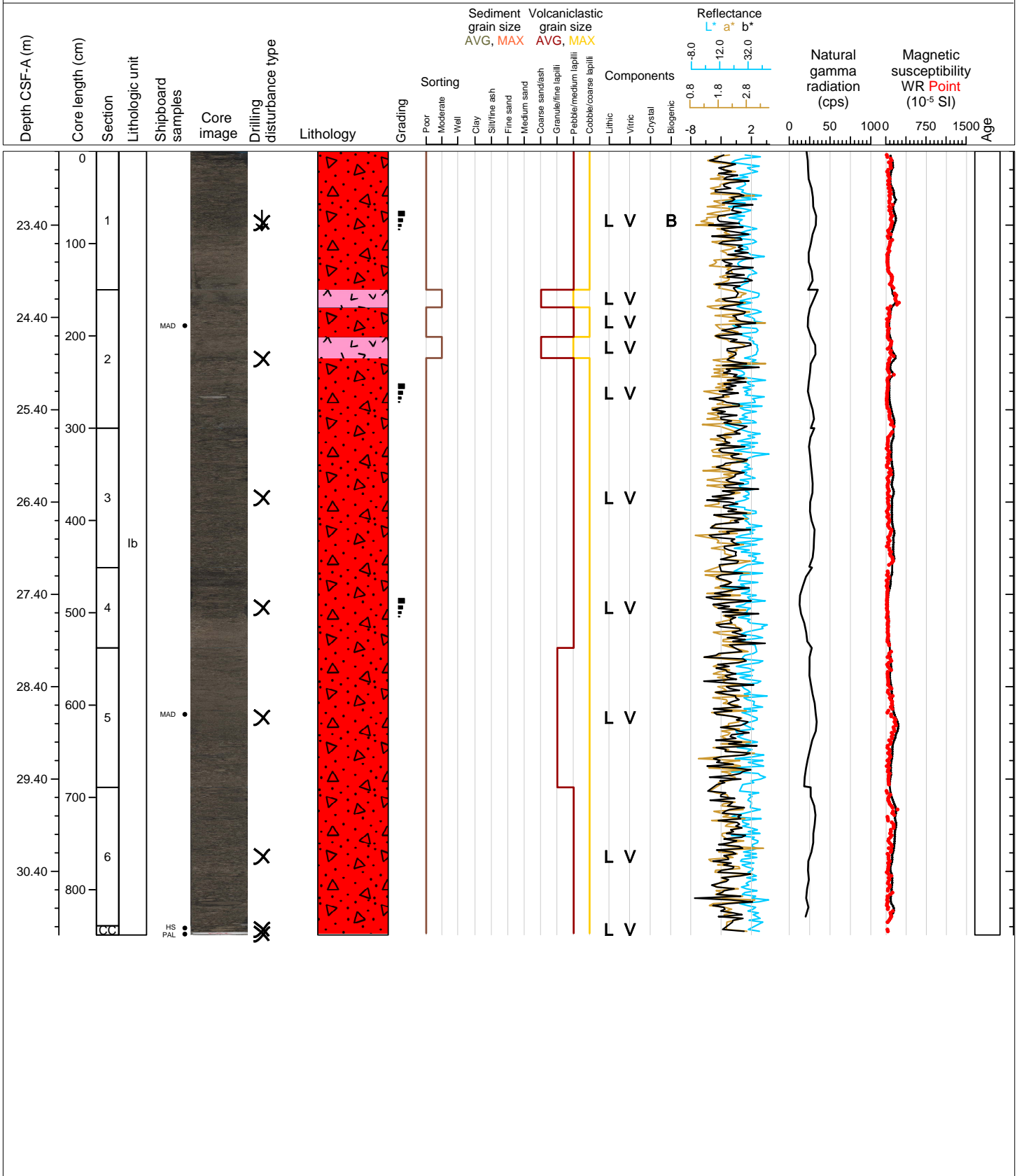
Hole 398-U1595A Core 3H, Interval 13.1-22.47 m (CSF-A)

Ash and lapilli-ash.



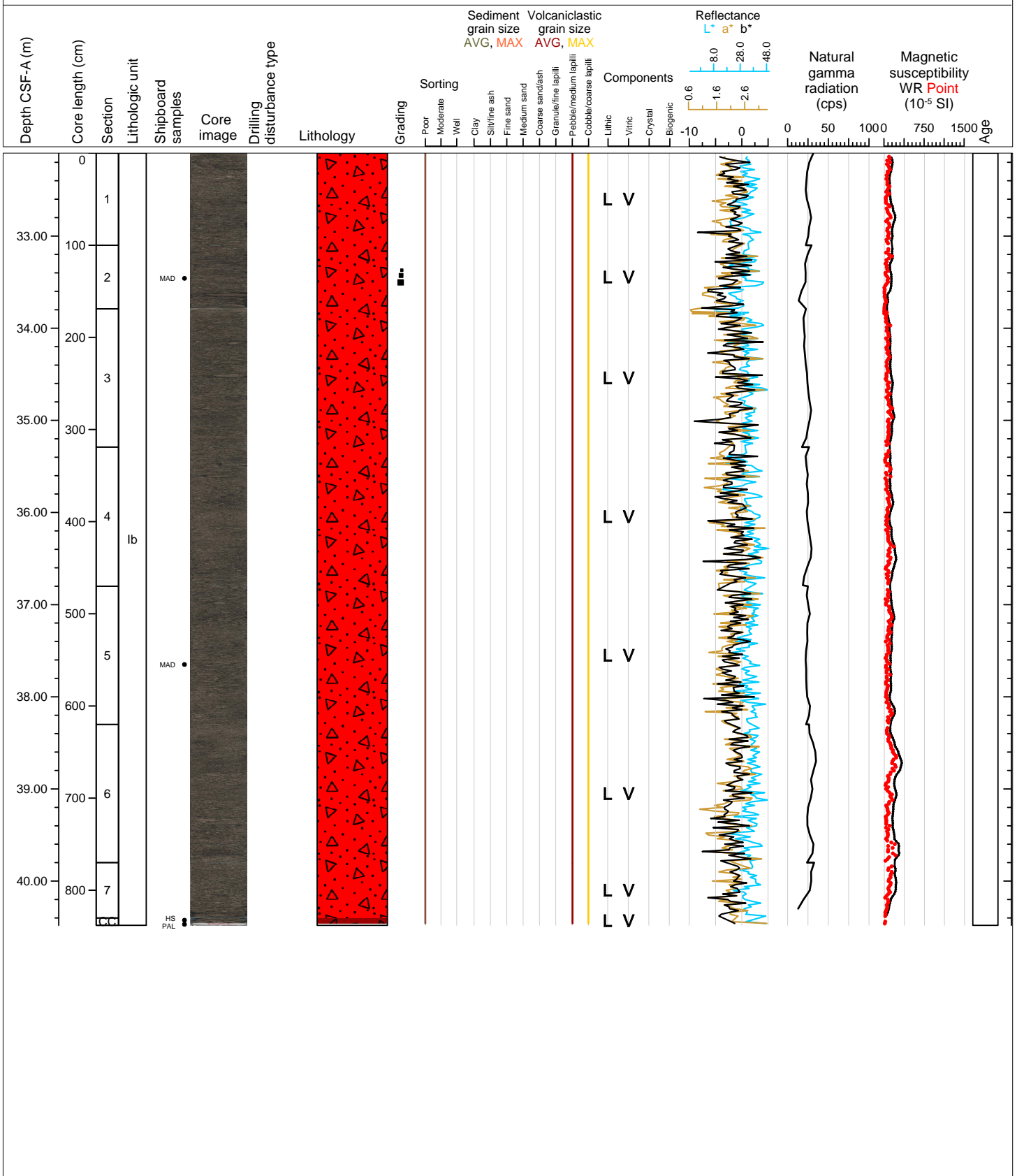
Hole 398-U1595A Core 4H, Interval 22.6-31.09 m (CSF-A)

Lapilli-ash and ash.



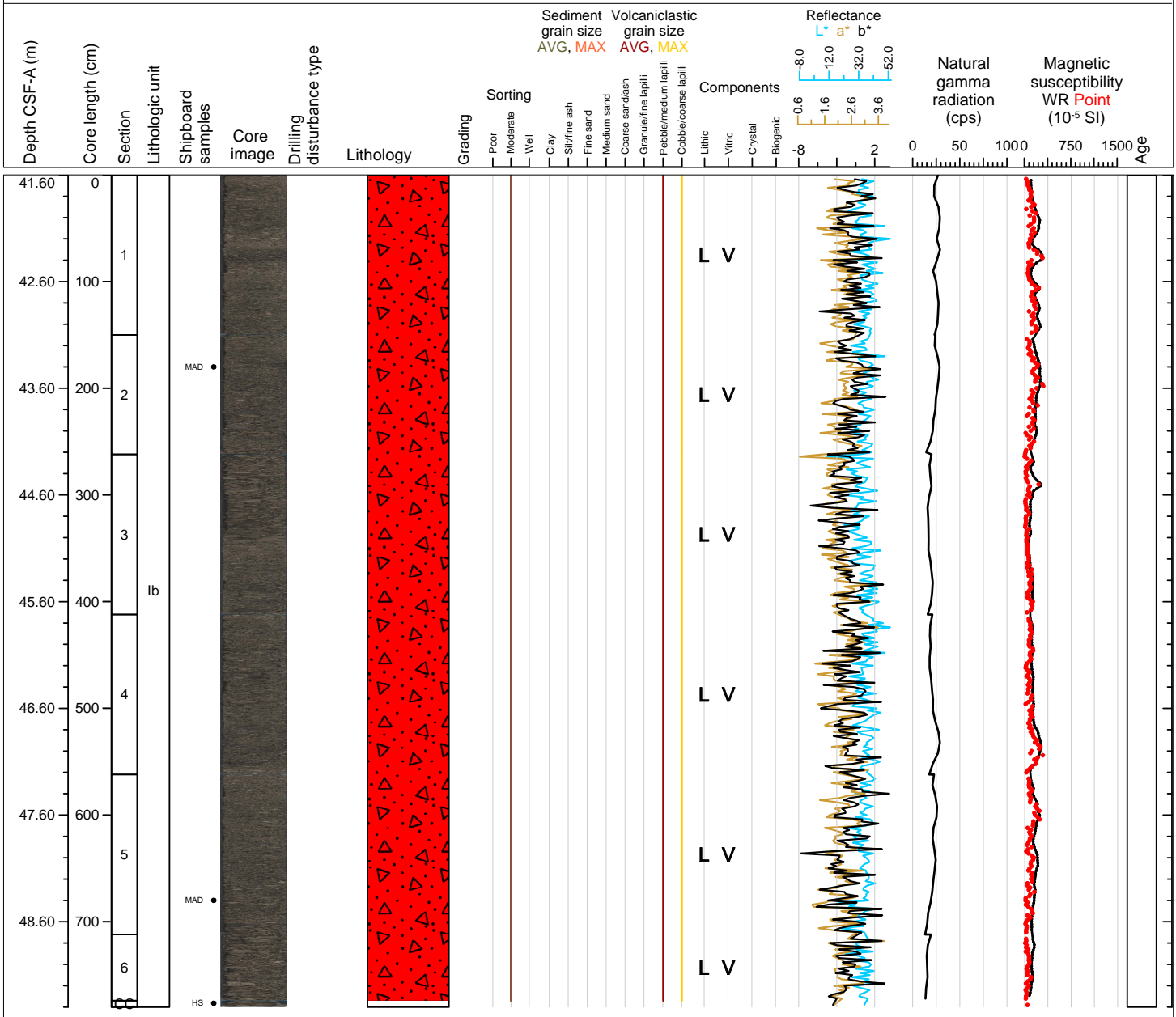
Hole 398-U1595A Core 5H, Interval 32.1-40.48 m (CSF-A)

Lapilli-ash and lapilli.



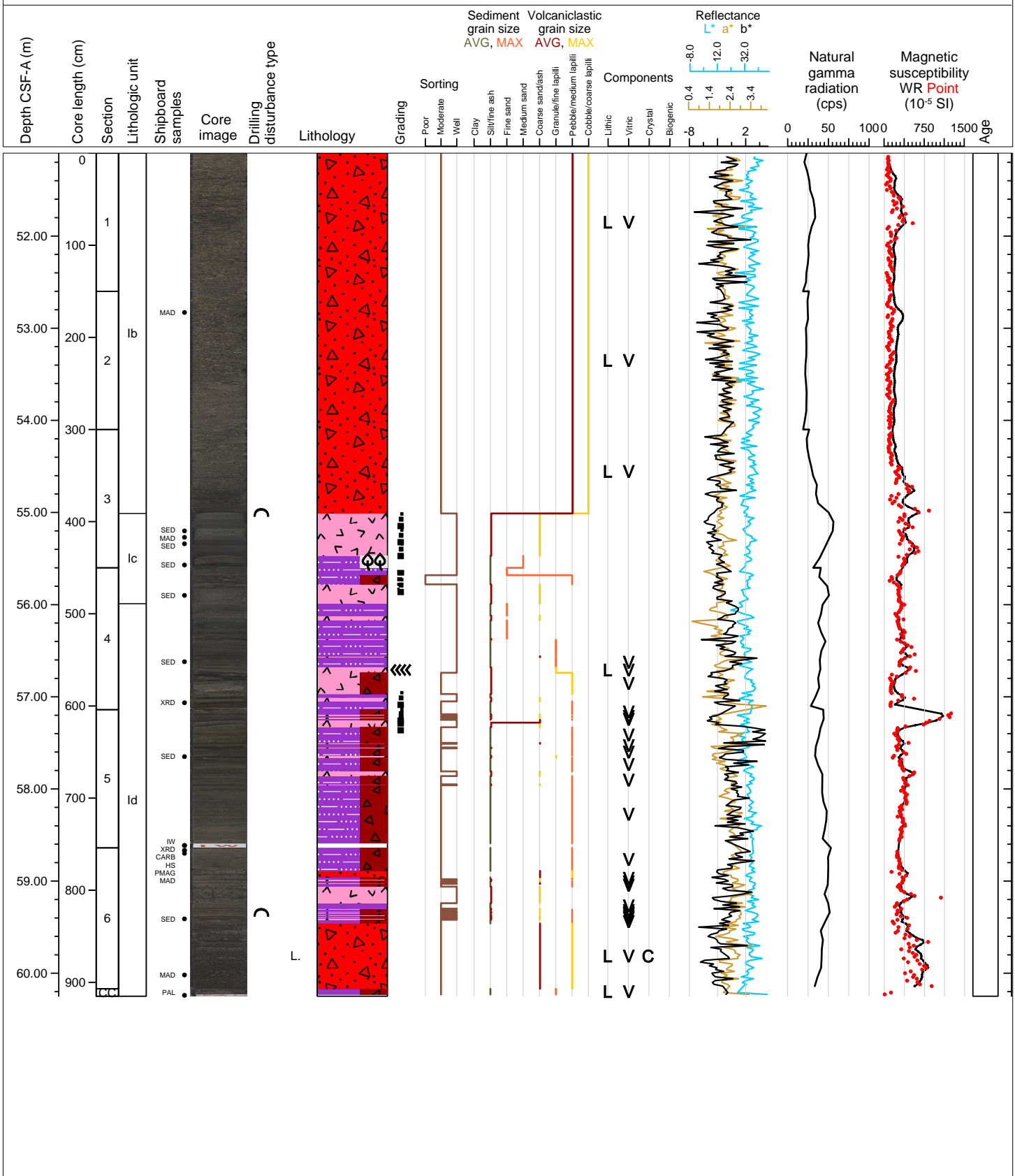
Hole 398-U1595A Core 6H, Interval 41.6-49.4 m (CSF-A)

Lapilli-ash and lapilli.



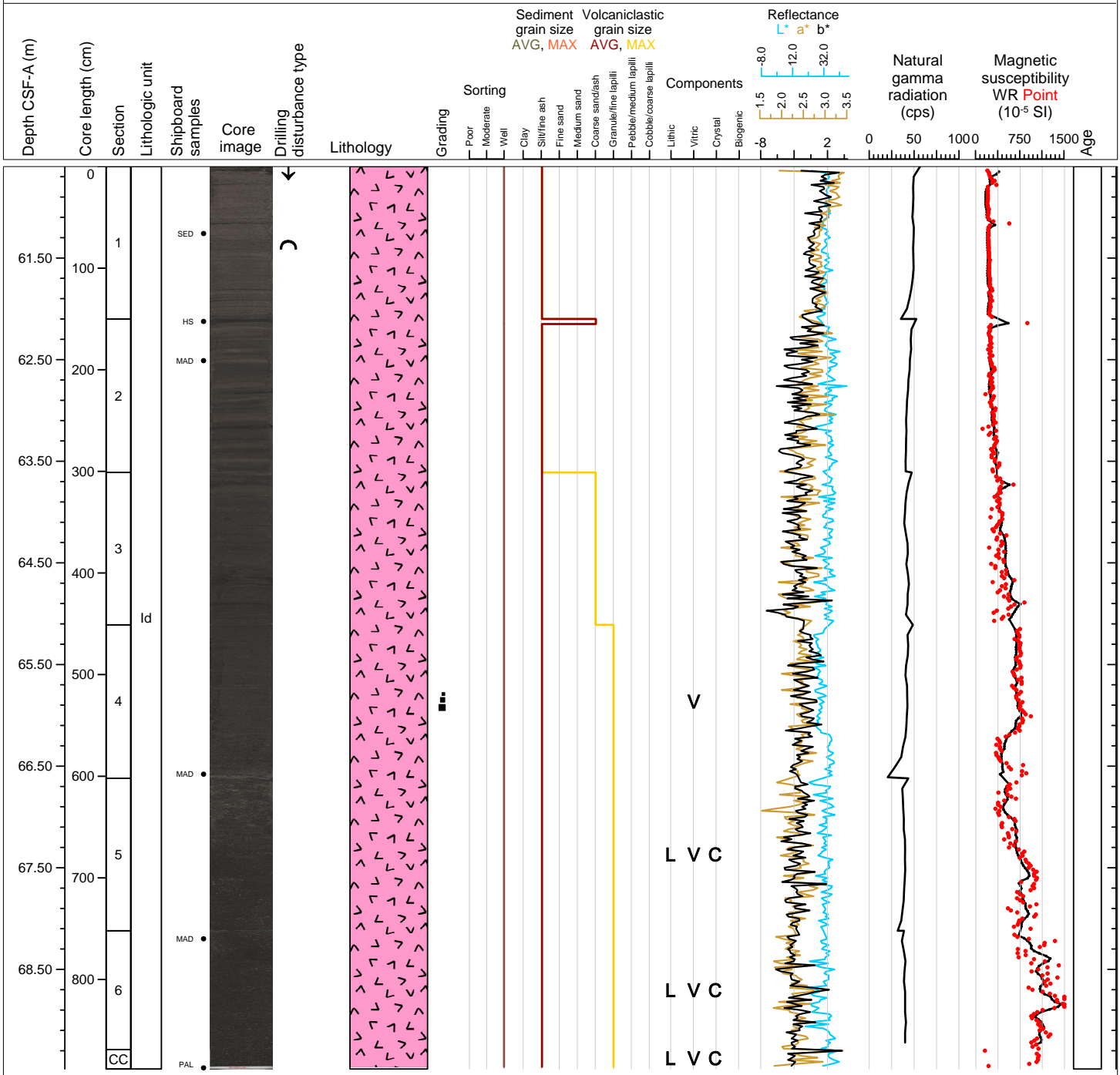
Hole 398-U1595A Core 7H, Interval 51.1-60.25 m (CSF-A)

Lapilli-ash, ash and tuffaceous mud.



Hole 398-U1595A Core 8H, Interval 60.6-69.48 m (CSF-A)

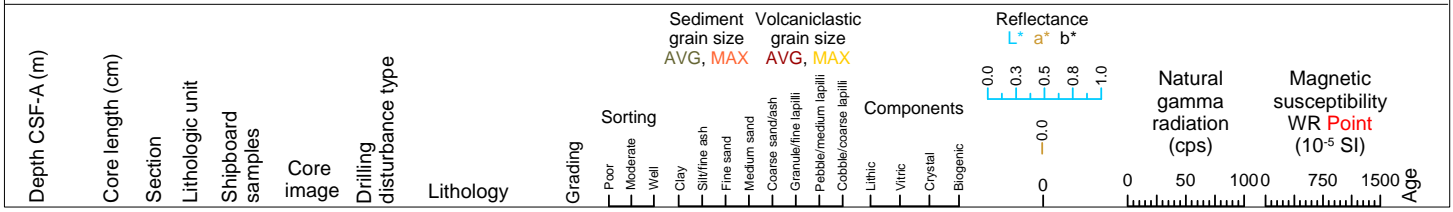
Ash.





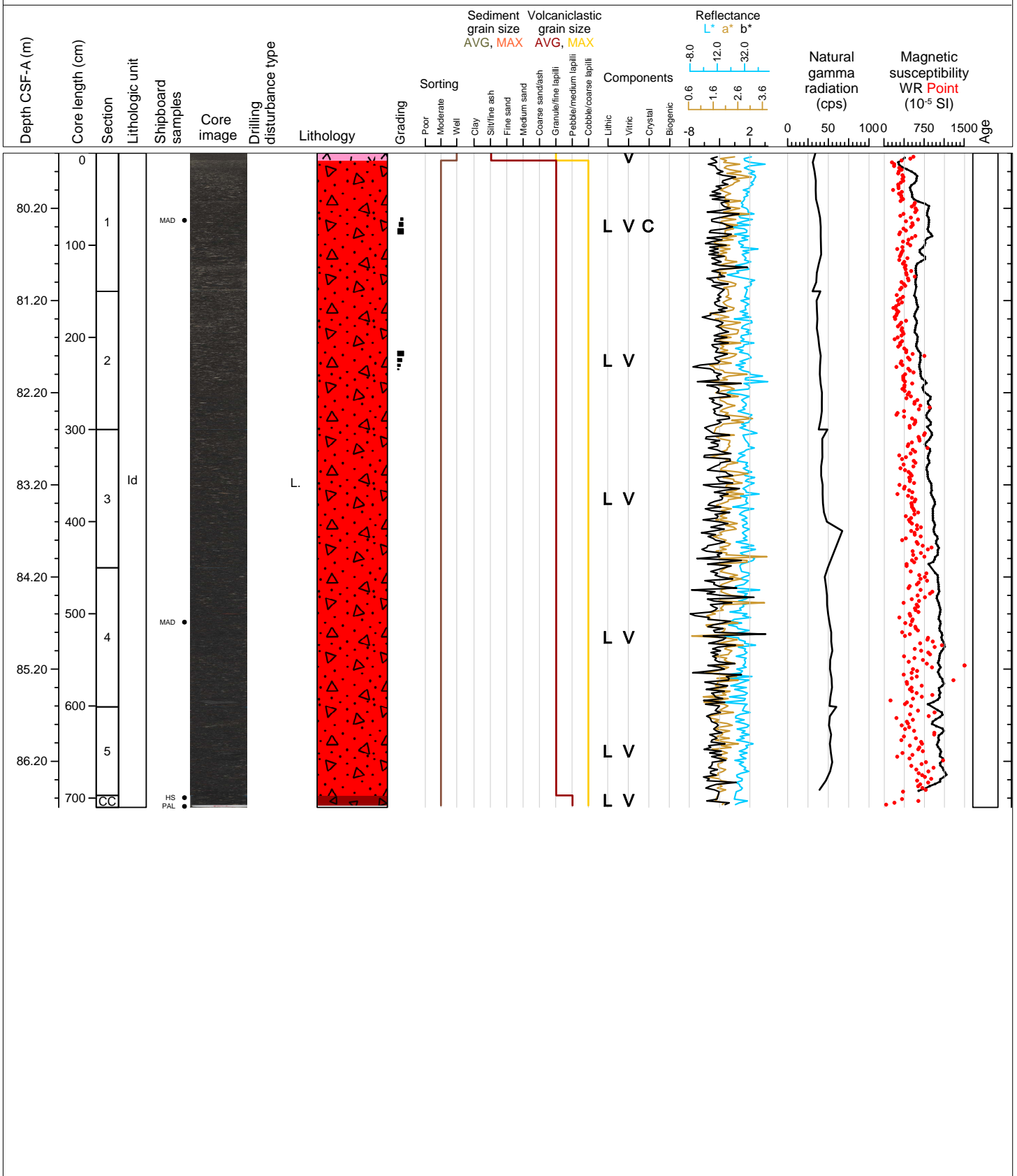
Hole 398-U1595A Core 9H, Interval 70.1-70.11 m (CSF-A)

NO RECOVERY 70.1-79.6 m



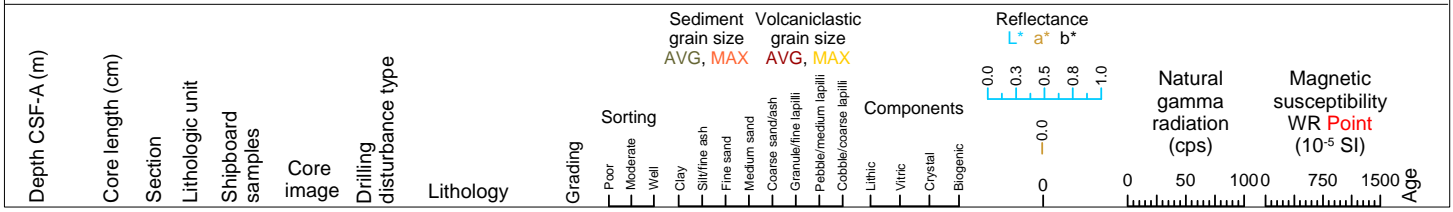
Hole 398-U1595A Core 10H, Interval 79.6-86.7 m (CSF-A)

Lithic lapilli-ash and lapilli.



Hole 398-U1595A Core 11H, Interval 89.1-89.1 m (CSF-A)

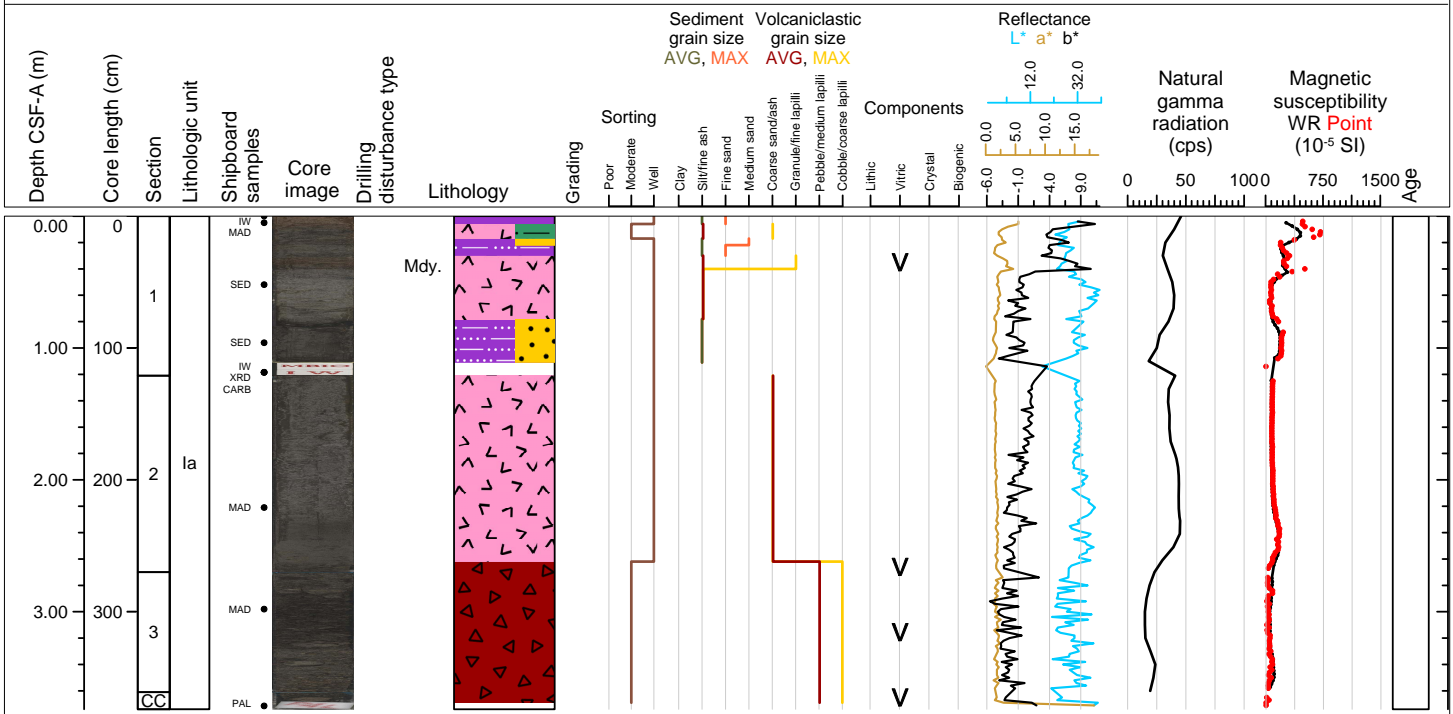
NO RECOVERY 89.1-98.6 m

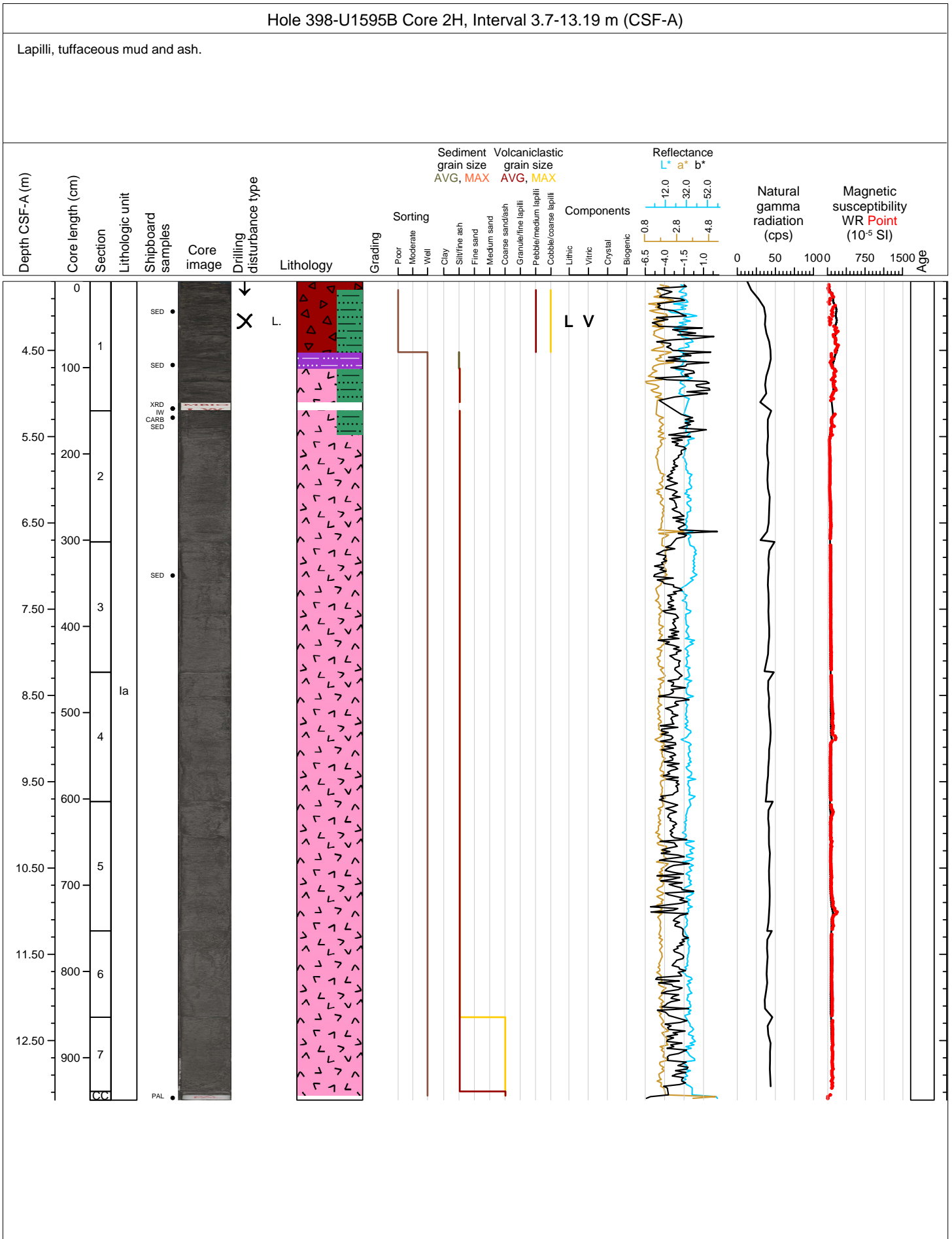


0

Hole 398-U1595B Core 1H, Interval 0.0-3.74 m (CSF-A)

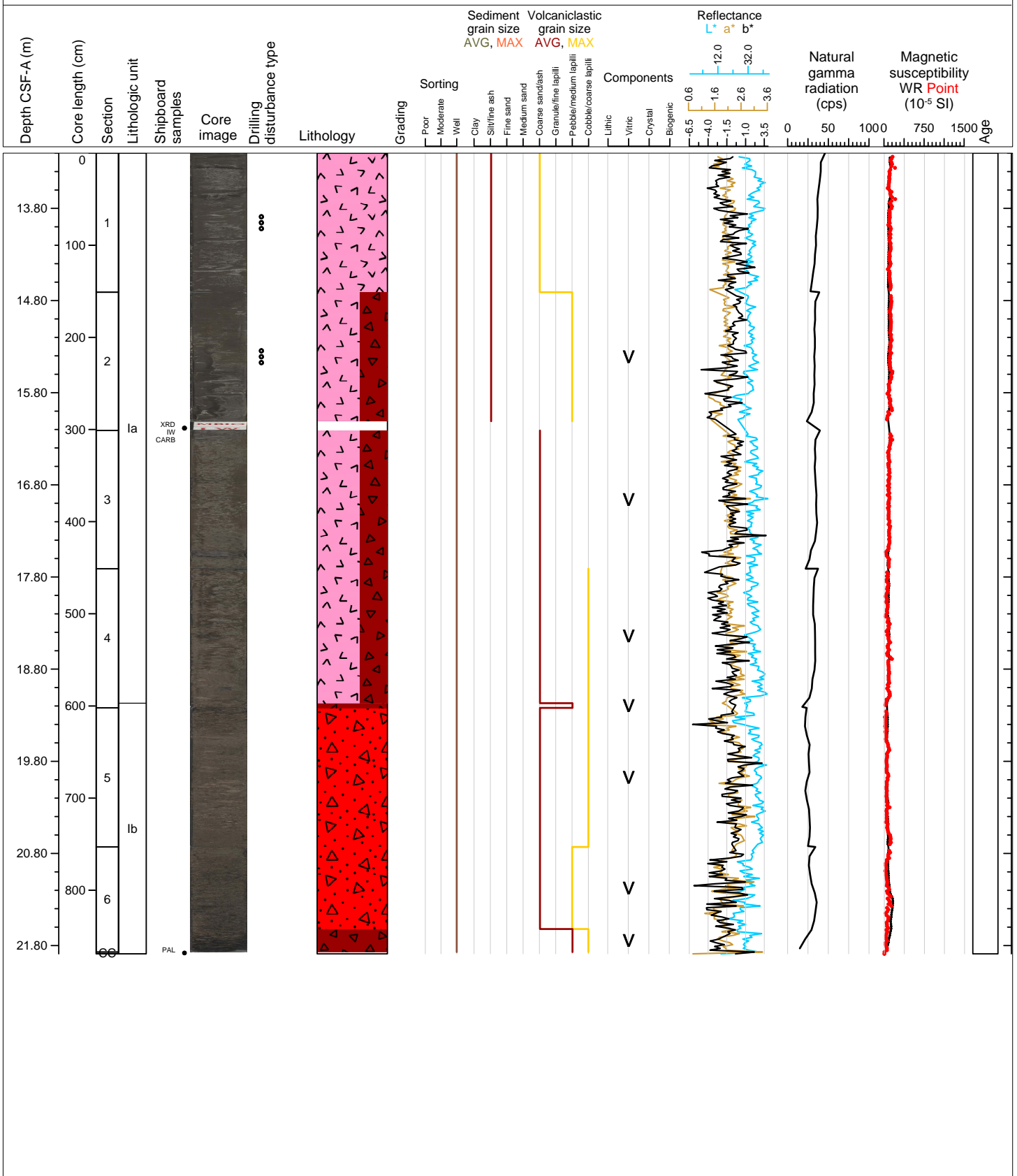
Tuffaceous mud, ash and lapilli.





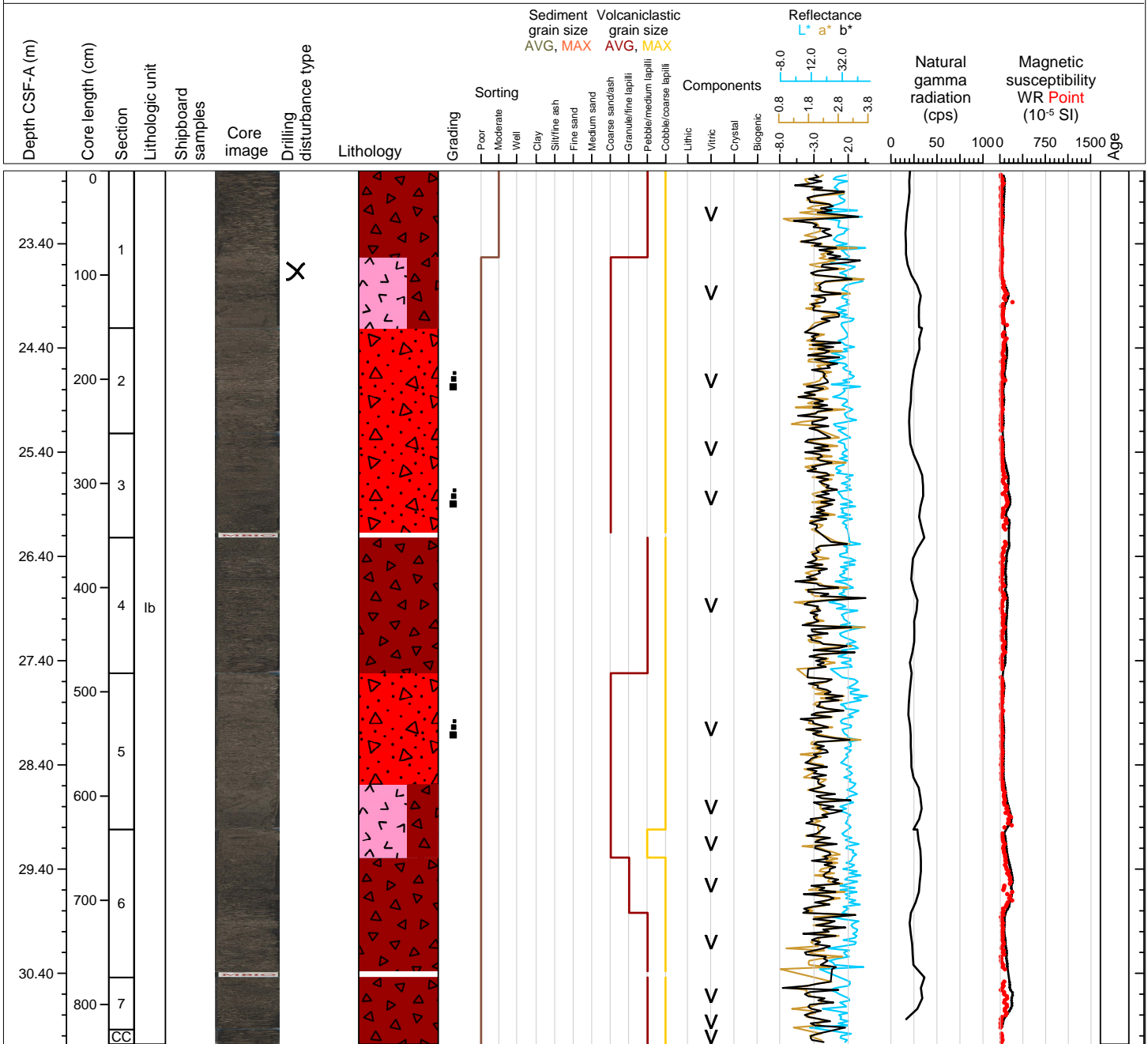
Hole 398-U1595B Core 3H, Interval 13.2-21.89 m (CSF-A)

Ash, lapilli and lapilli-ash.



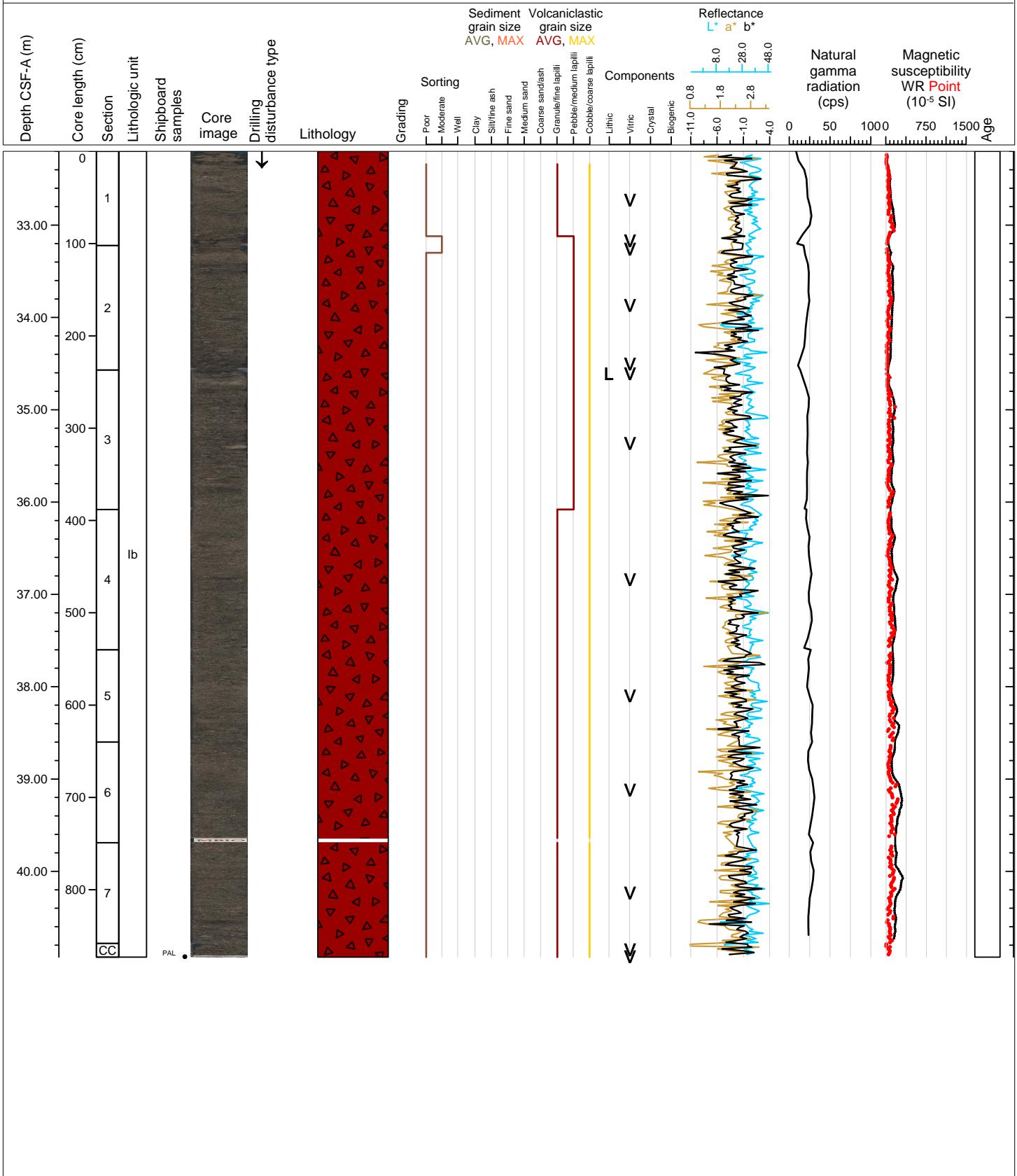
Hole 398-U1595B Core 4H, Interval 22.7-31.08 m (CSF-A)

Lapilli, ash and lapilli-ash.



Hole 398-U1595B Core 5H, Interval 32.2-40.93 m (CSF-A)

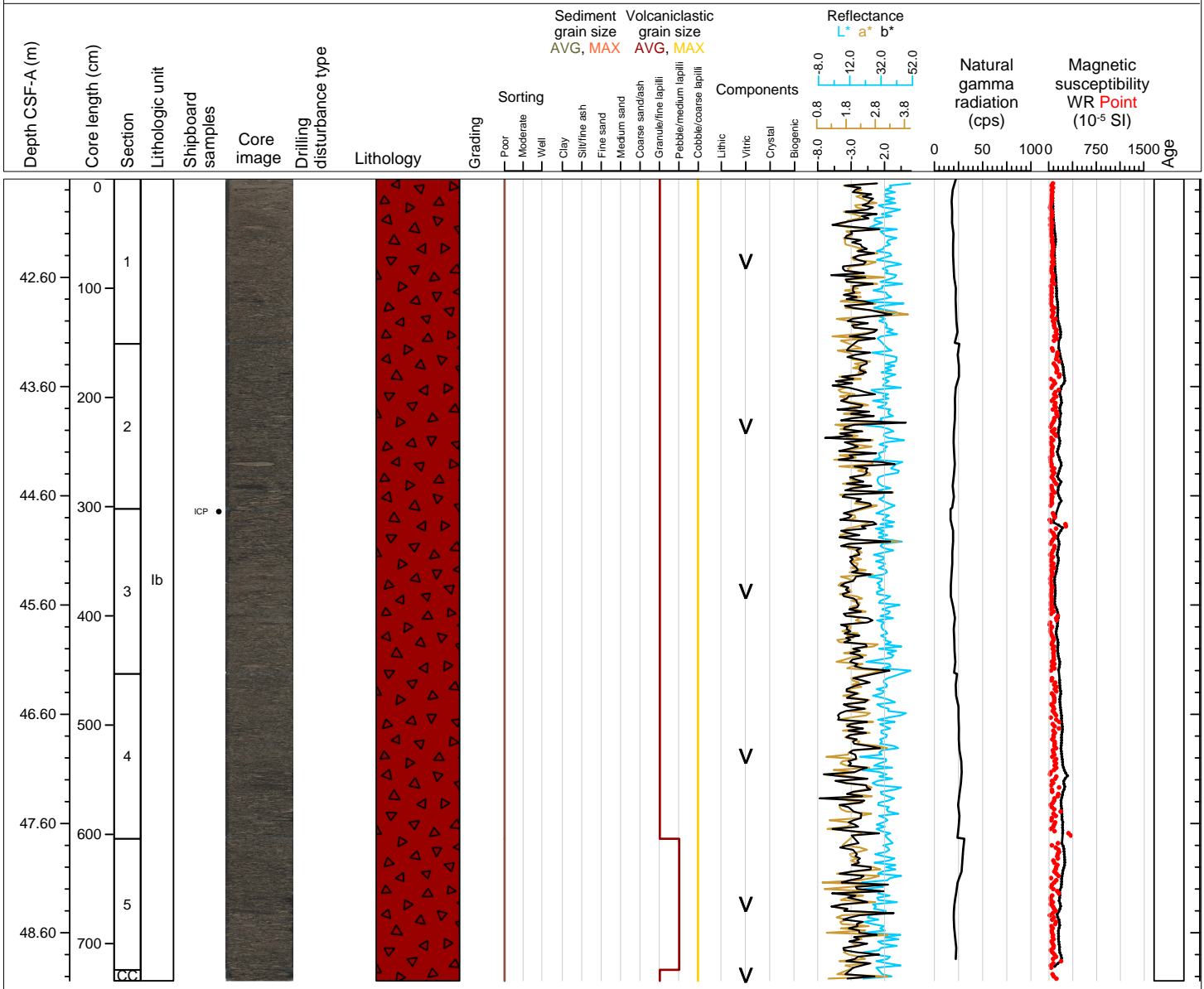
Lapilli.





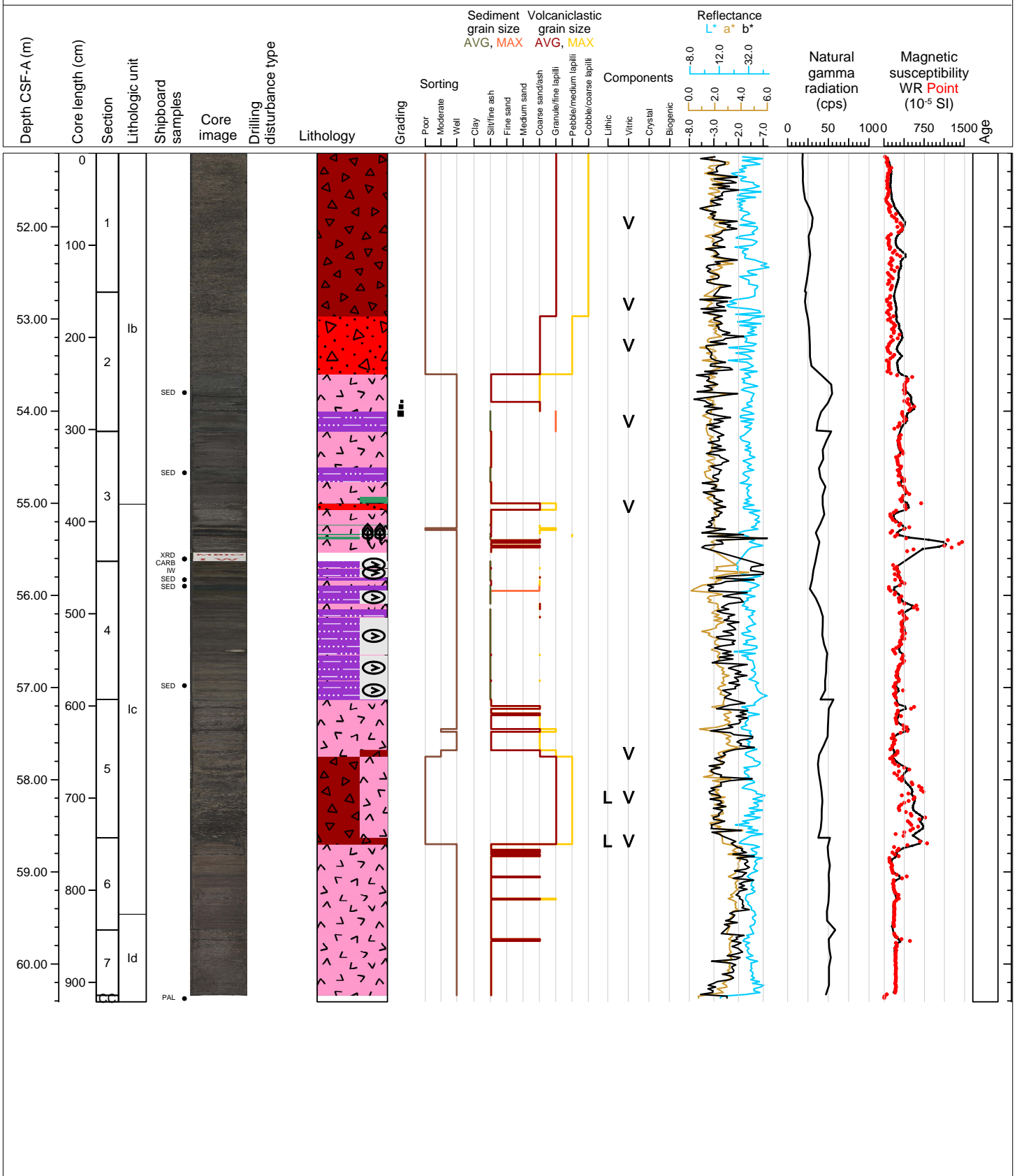
Hole 398-U1595B Core 6H, Interval 41.7-49.04 m (CSF-A)

Lapilli.



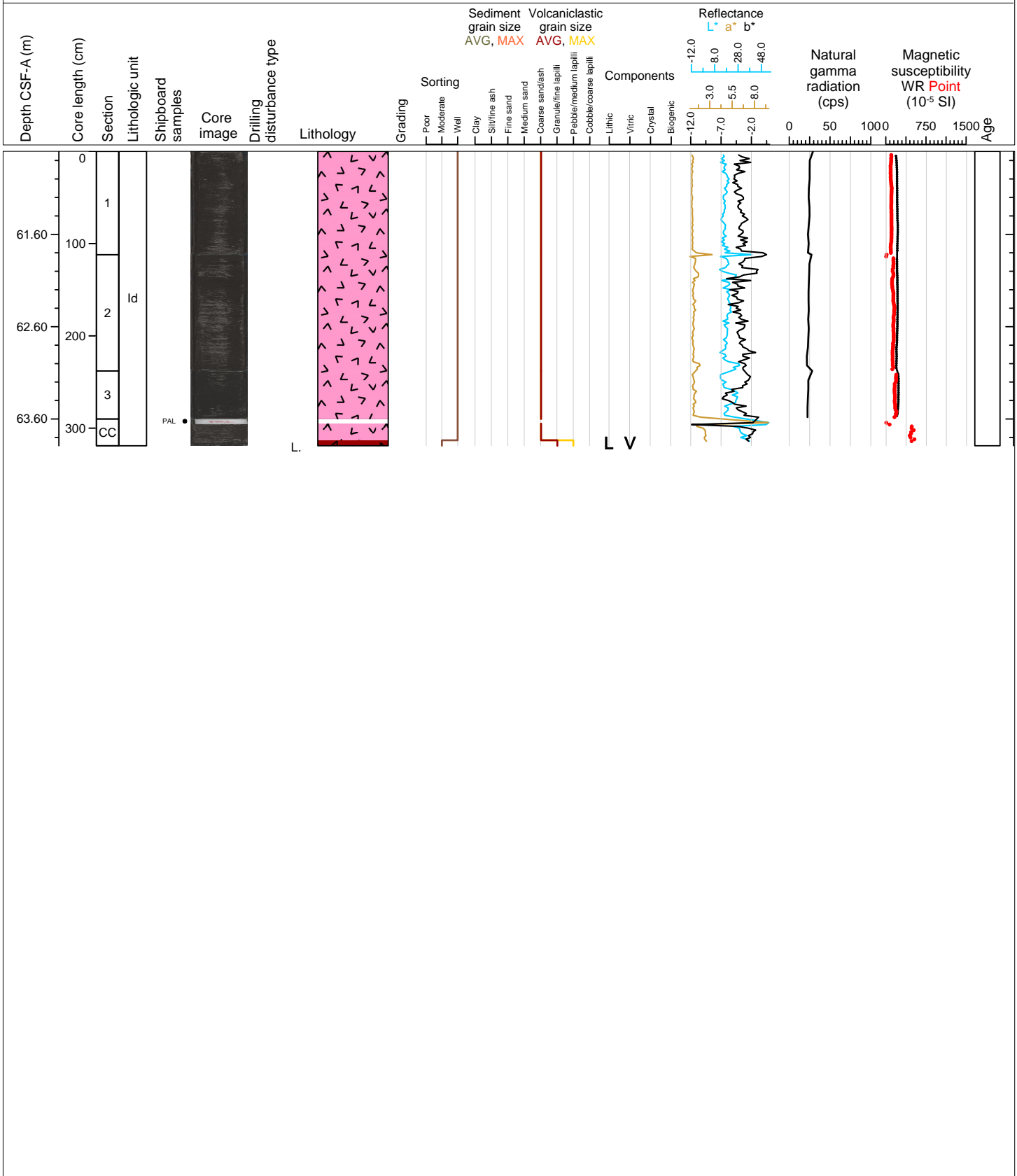
Hole 398-U1595B Core 7H, Interval 51.2-60.41 m (CSF-A)

Lapilli, lapilli-ash, ash, tuffaceous mud and mud.



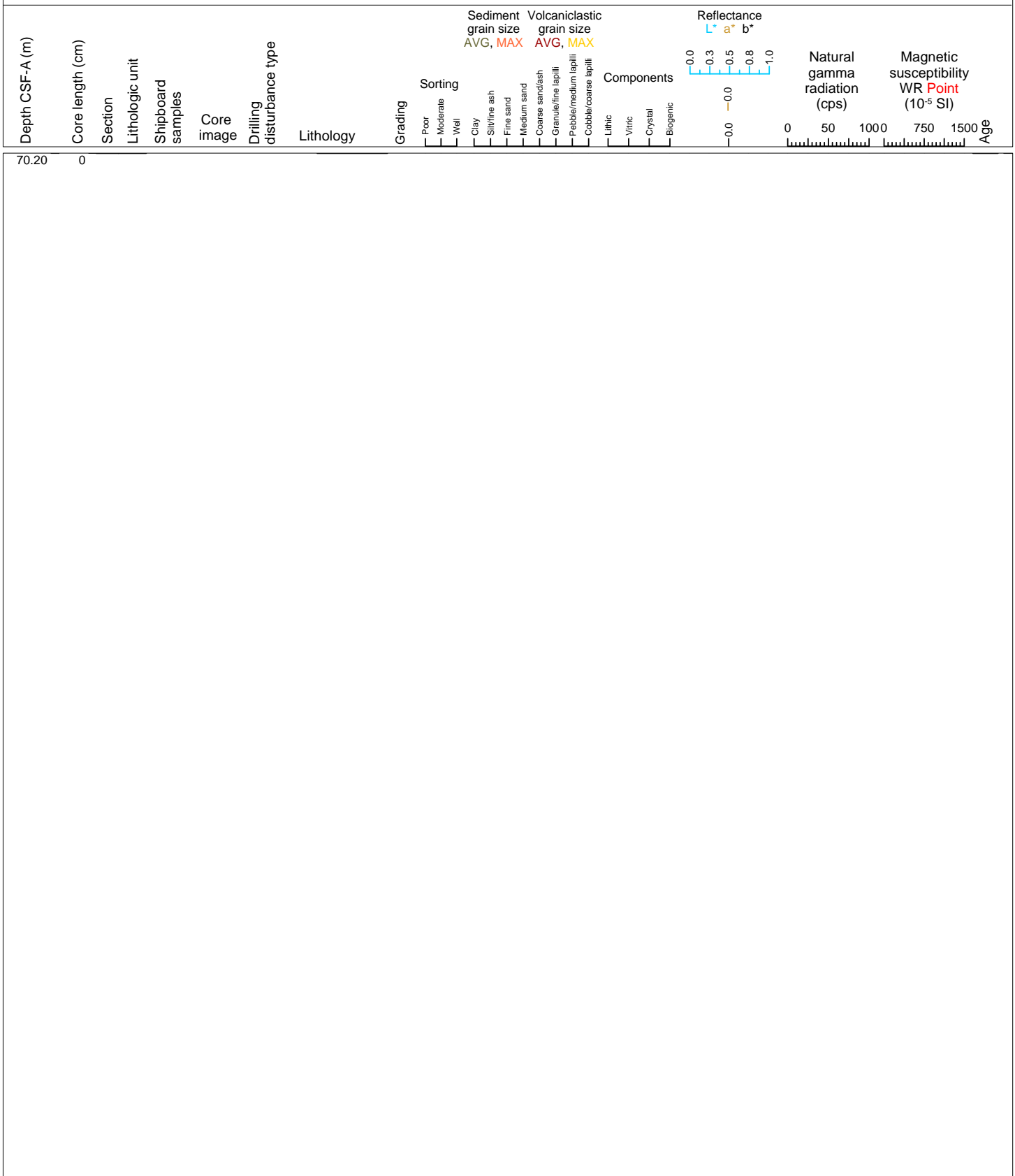
Hole 398-U1595B Core 8H, Interval 60.7-63.89 m (CSF-A)

Ash and lithic lapilli.



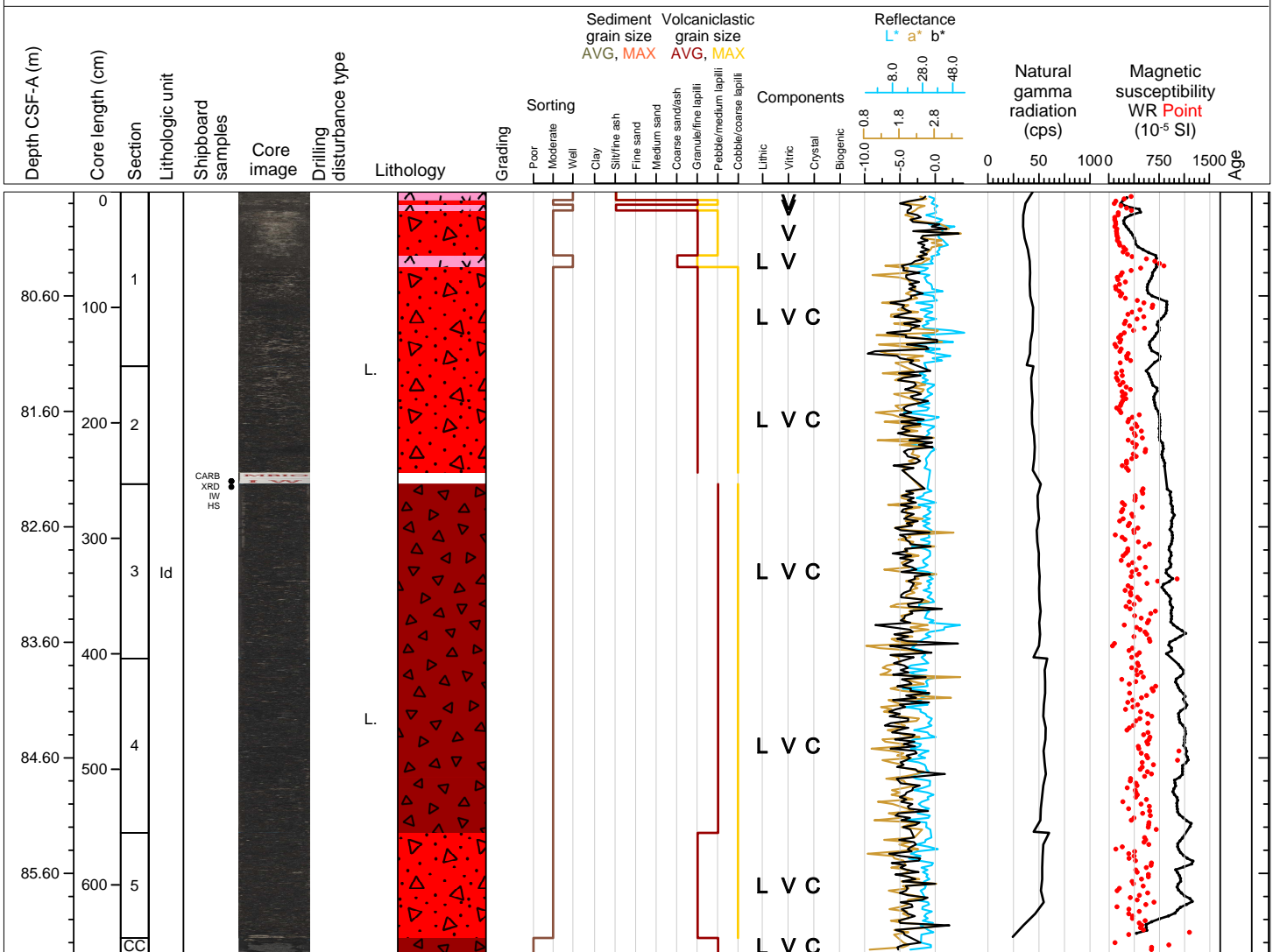
Hole 398-U1595B Core 9H, Interval 70.2-70.2 m (CSF-A)

NO RECOVERY 70.2-79.7 m



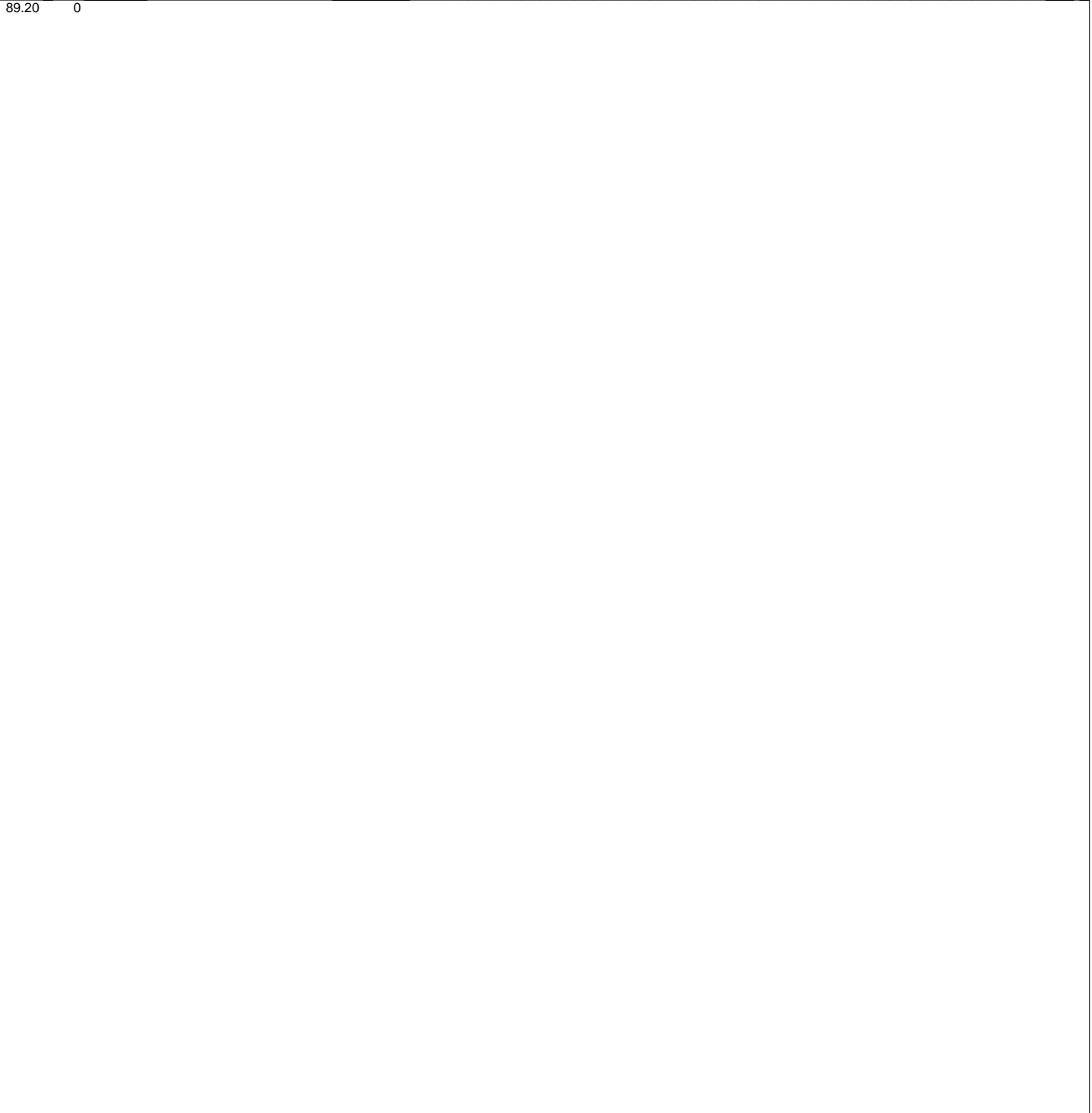
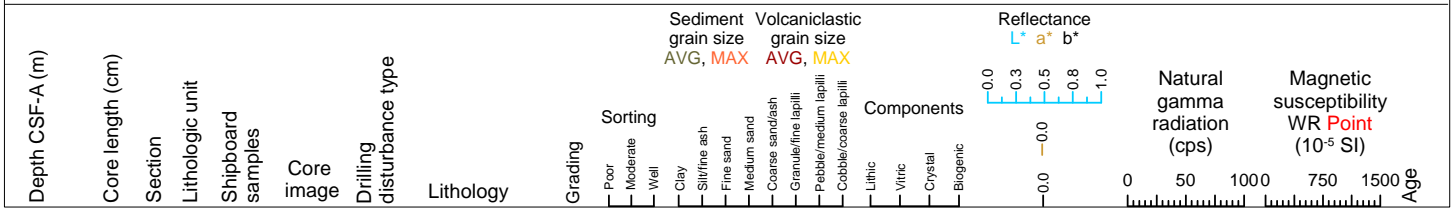
Hole 398-U1595B Core 10H, Interval 79.7-86.3 m (CSF-A)

Ash, lapilli-ash, lithic lapilli-ash and lithic lapilli.



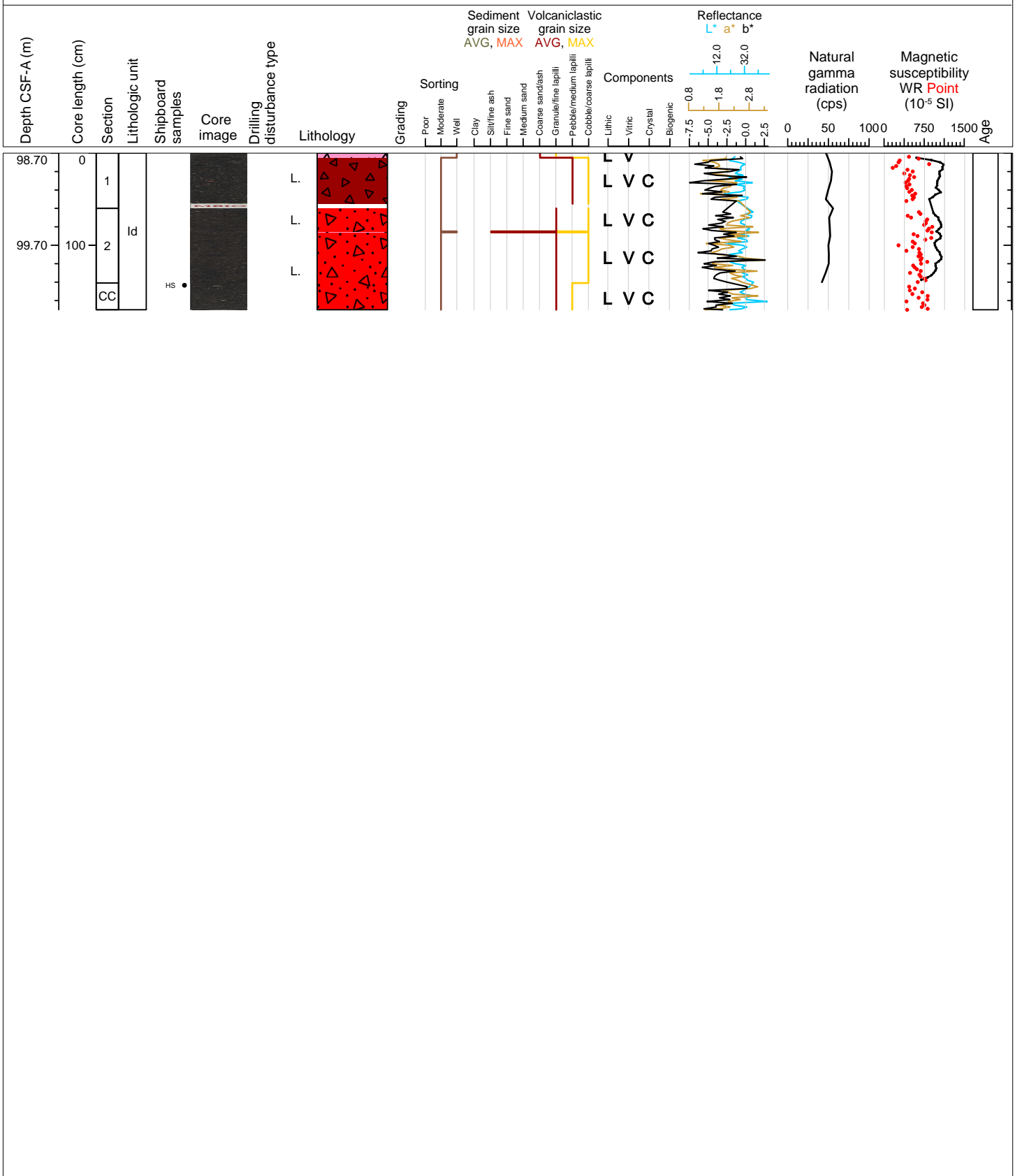
Hole 398-U1595B Core 11H, Interval 89.2-89.2 m (CSF-A)

NO RECOVERY 89.2-98.7 m



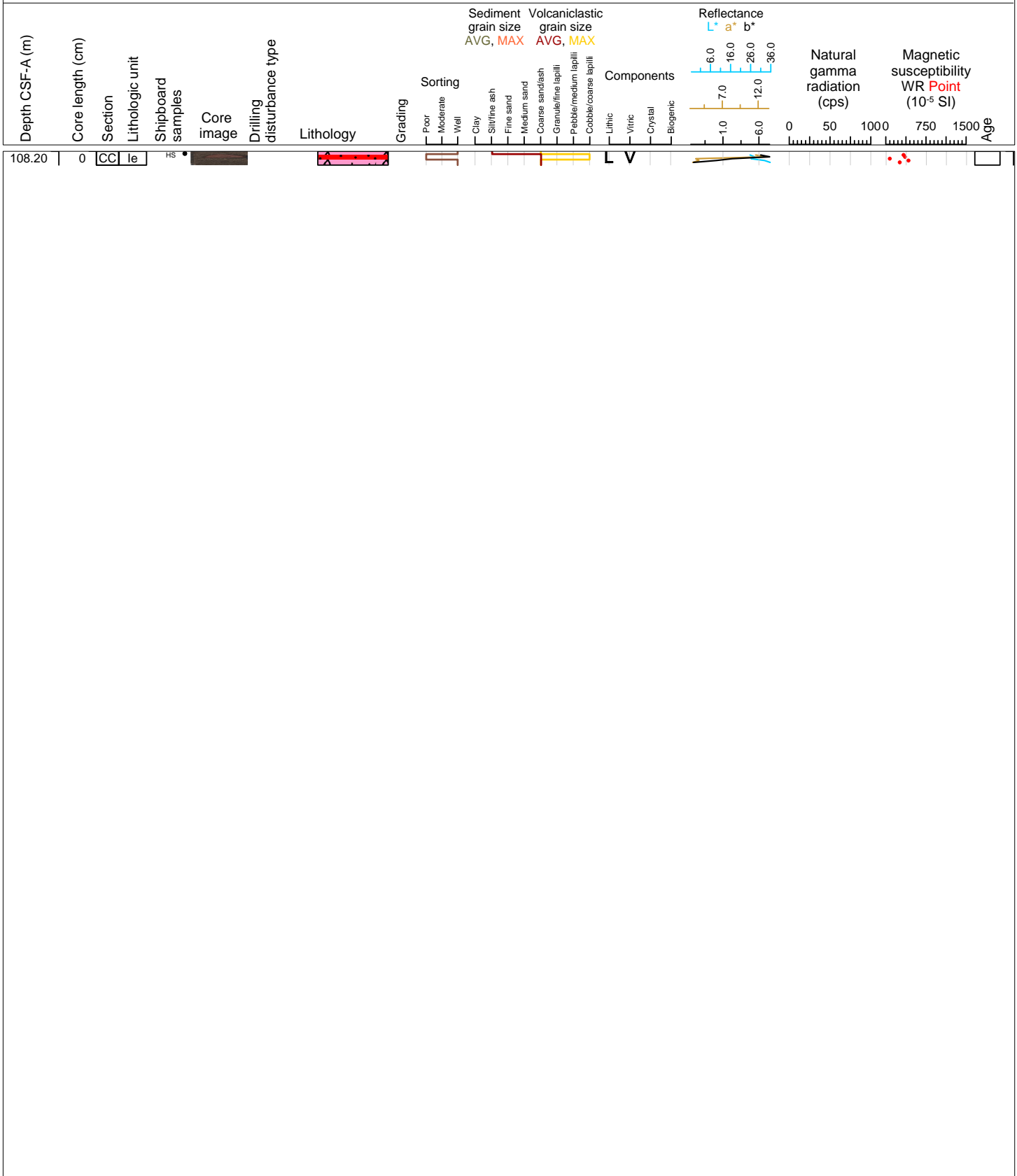
Hole 398-U1595B Core 12H, Interval 98.7-100.4 m (CSF-A)

Lithic ash, lithic lapilli, lithic lapilli-ash and ash.



Hole 398-U1595B Core 13H, Interval 108.2-108.35 m (CSF-A)

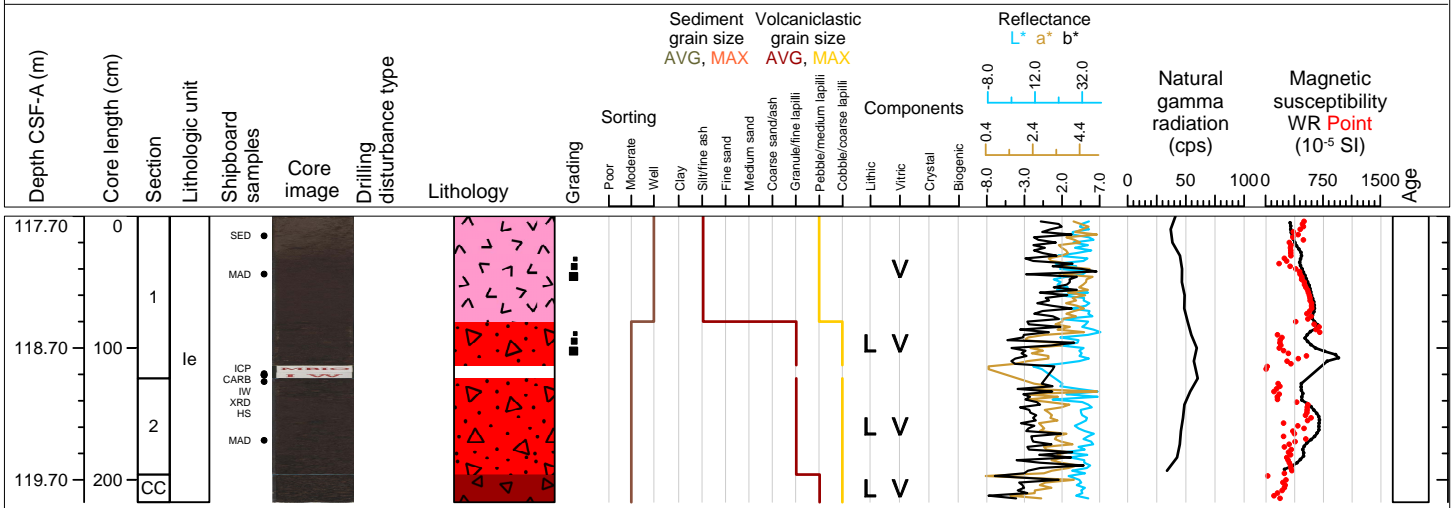
Ash and lapilli-ash.





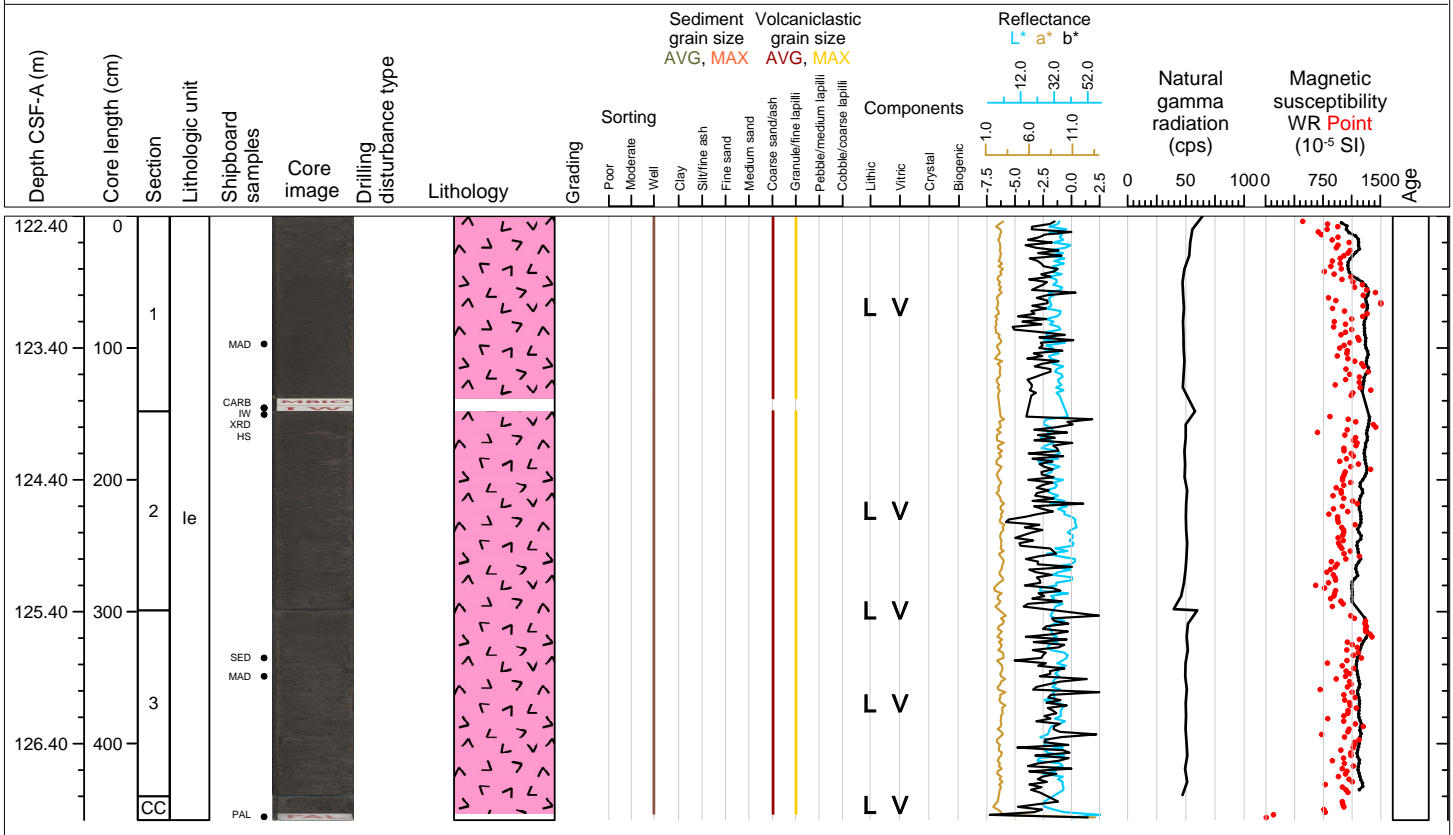
Hole 398-U1595B Core 14F, Interval 117.7-119.87 m (CSF-A)

Ash, lapilli-ash and lapilli.



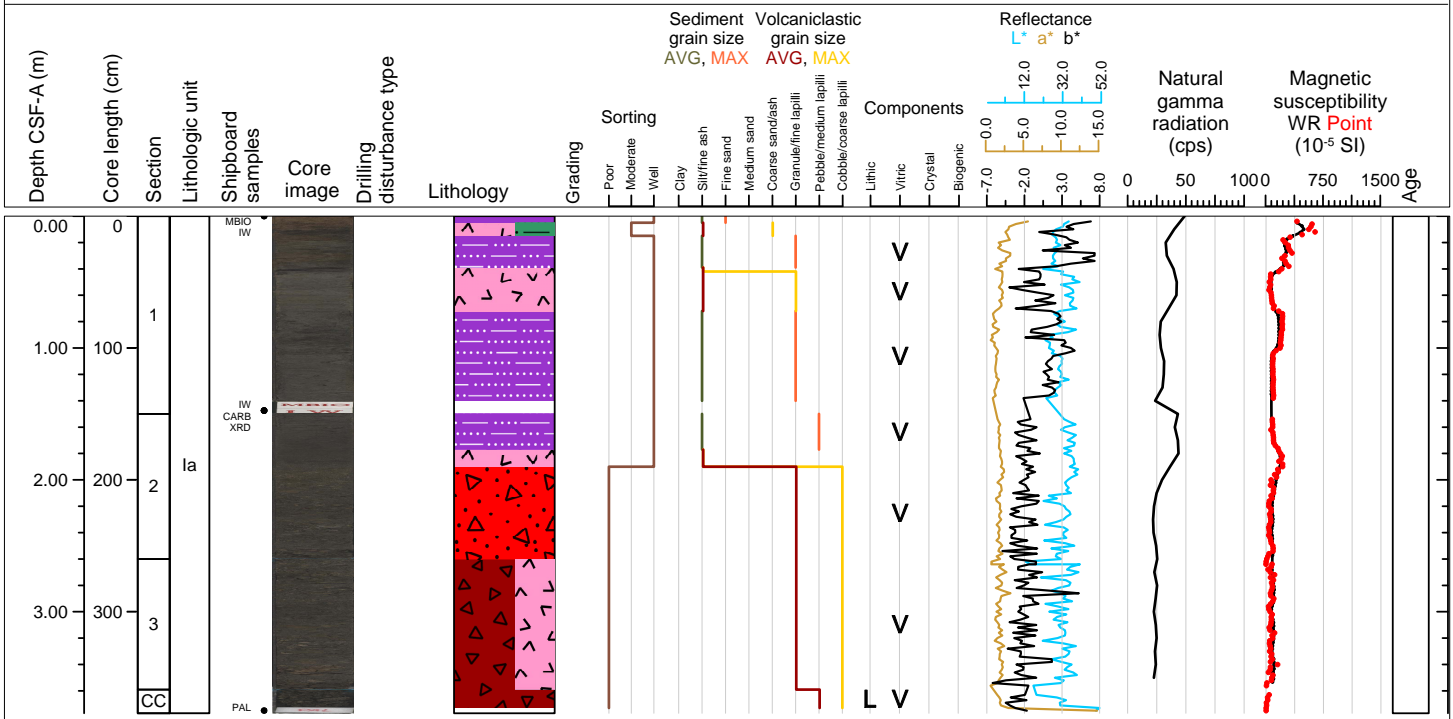
Hole 398-U1595B Core 15F, Interval 122.4-126.98 m (CSF-A)

Ash.



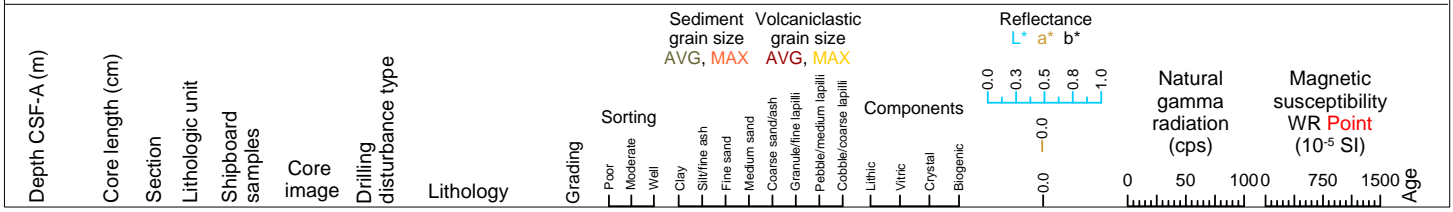
Hole 398-U1595C Core 1H, Interval 0.0-3.77 m (CSF-A)

Tuffaceous mud, ash, lapilli-ash and lapilli.



Hole 398-U1595C Core 21, Interval 3.8-3.8 m (CSF-A)

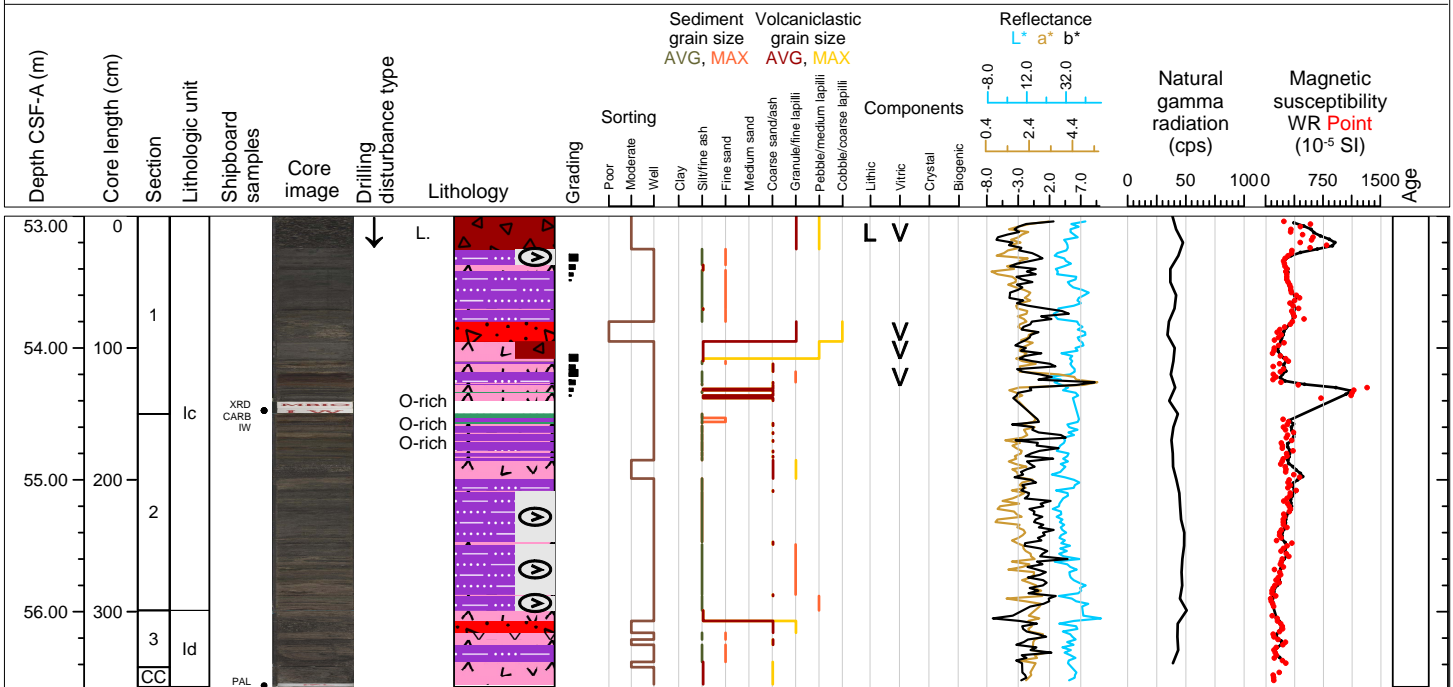
DRILLED INTERVAL 3.80-53.00 m



0

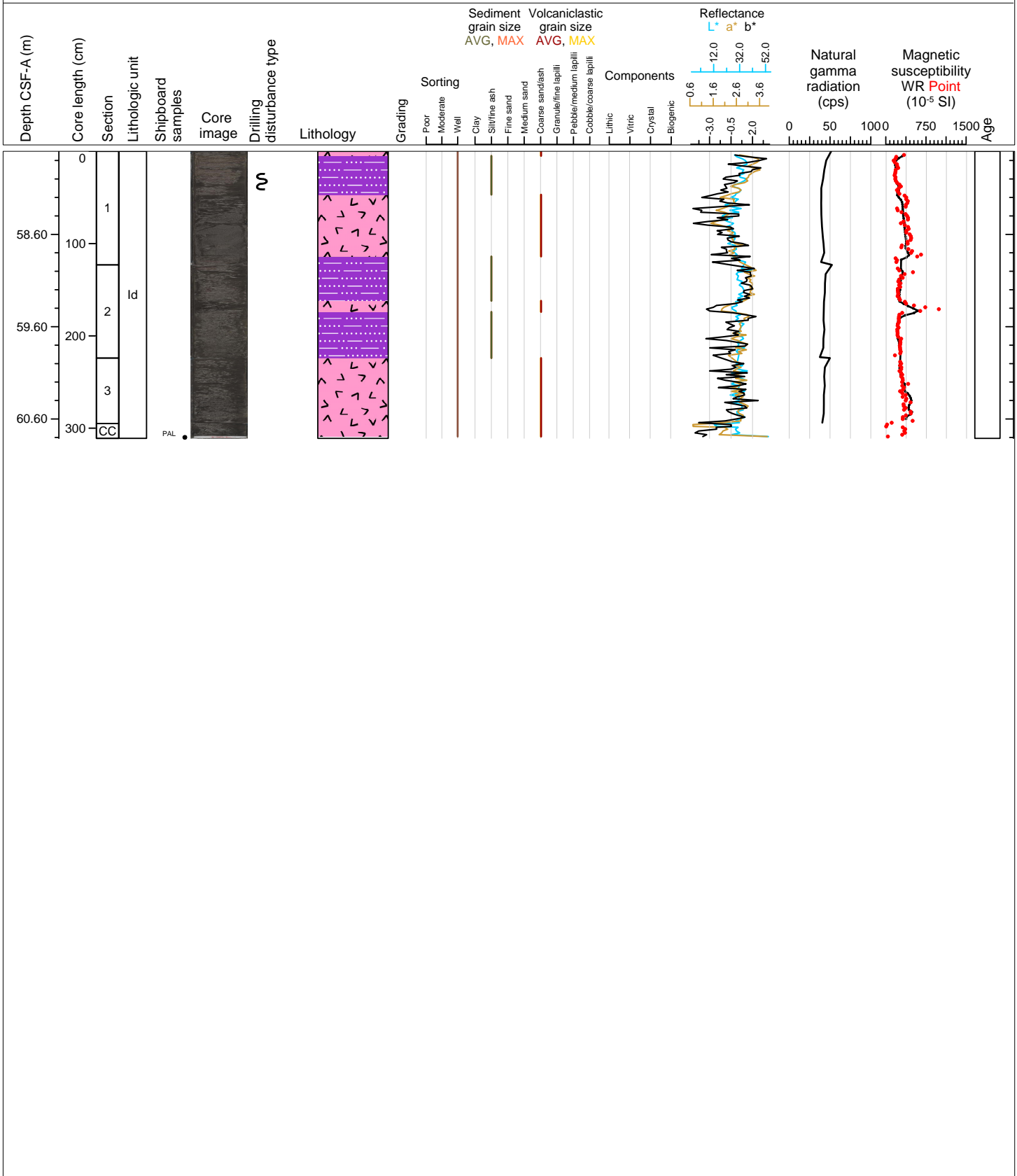
Hole 398-U1595C Core 3F, Interval 53.0-56.57 m (CSF-A)

Lithic lapilli, tuffaceous mud, ash, lapilli-ash, organic rich mud and tuff.



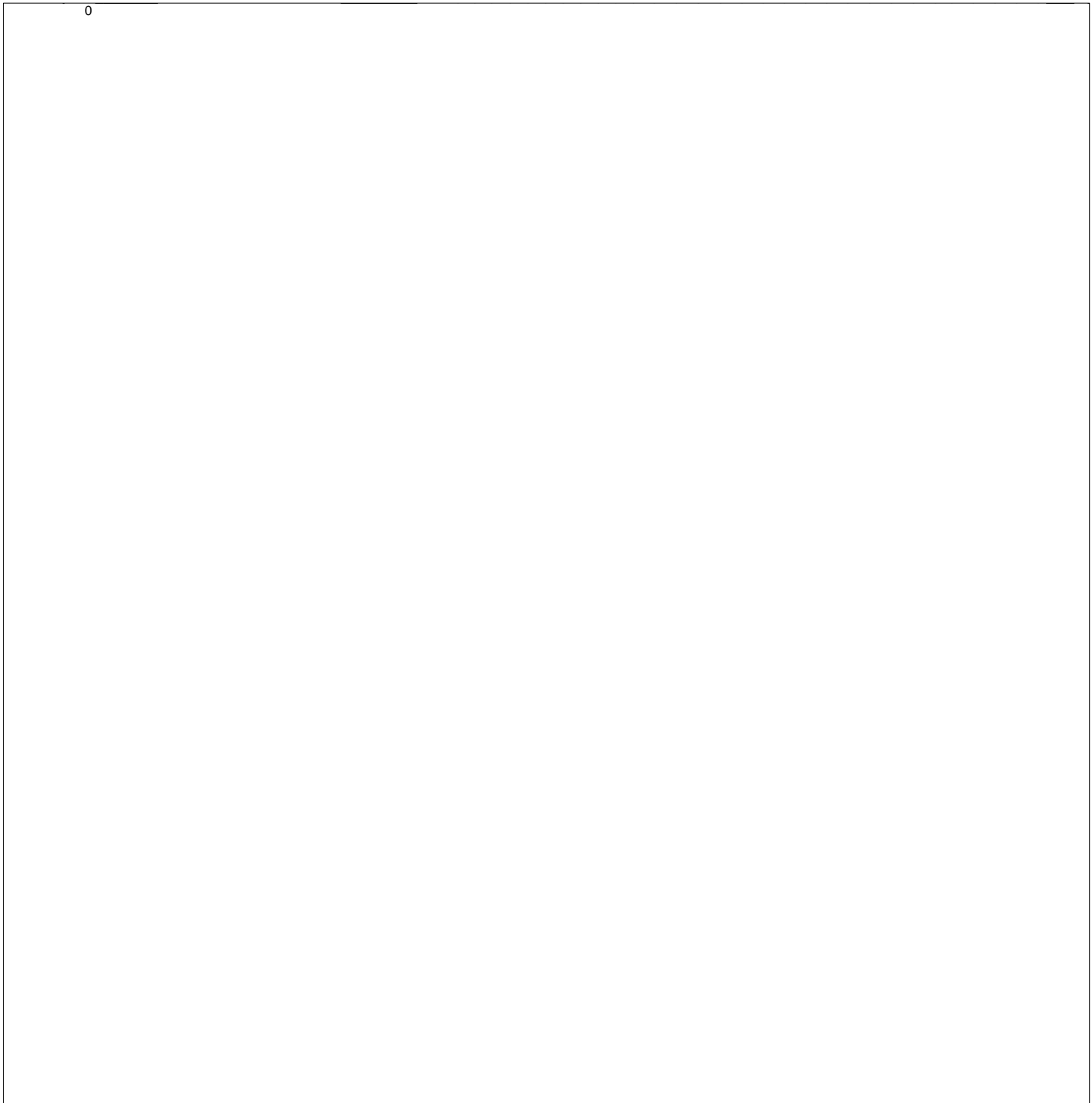
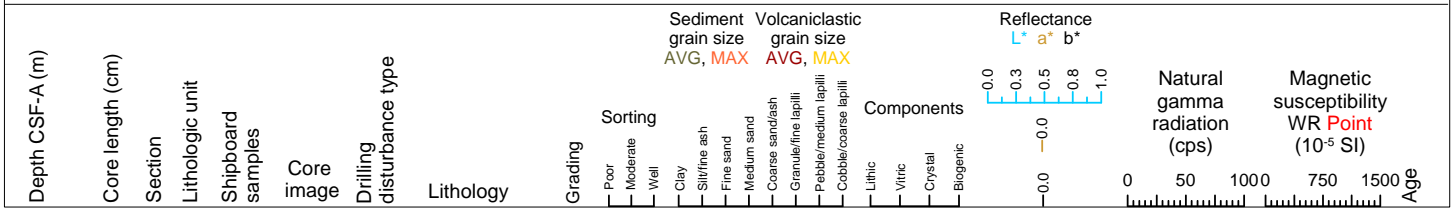
Hole 398-U1595C Core 4F, Interval 57.7-60.81 m (CSF-A)

Ash and tuffaceous mud.



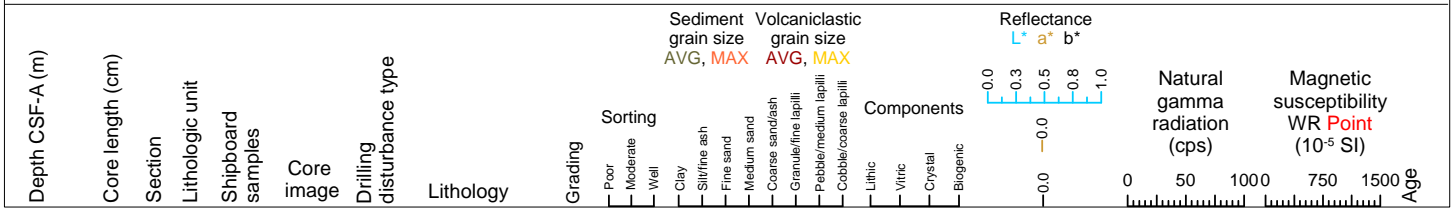
Hole 398-U1595C Core 5F, Interval 62.4-67.1 m (CSF-A)

NO RECOVERY 62.4-67.1 m



Hole 398-U1595C Core 6F, Interval 67.1-71.8 m (CSF-A)

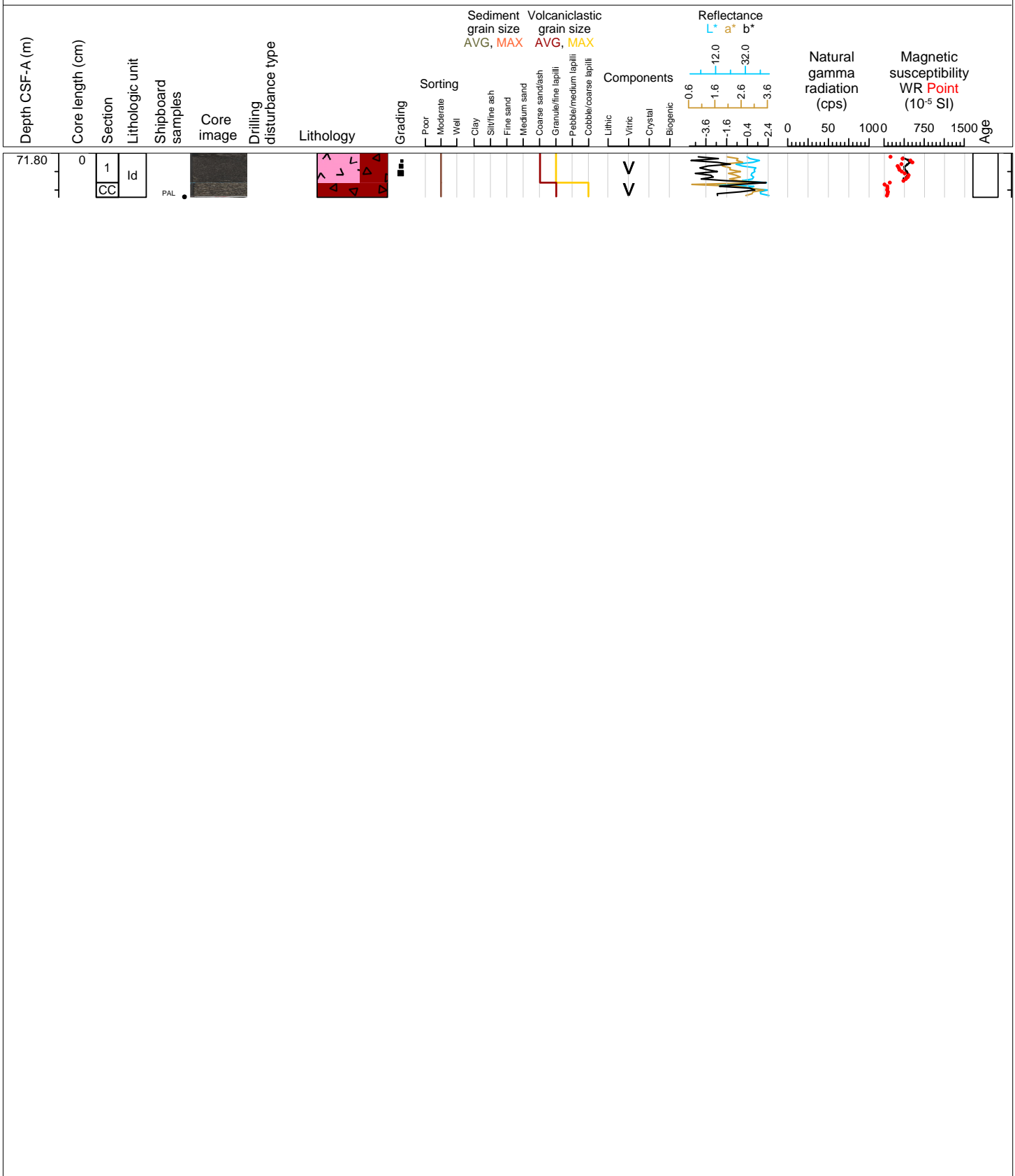
NO RECOVERY 67.1-71.8 m





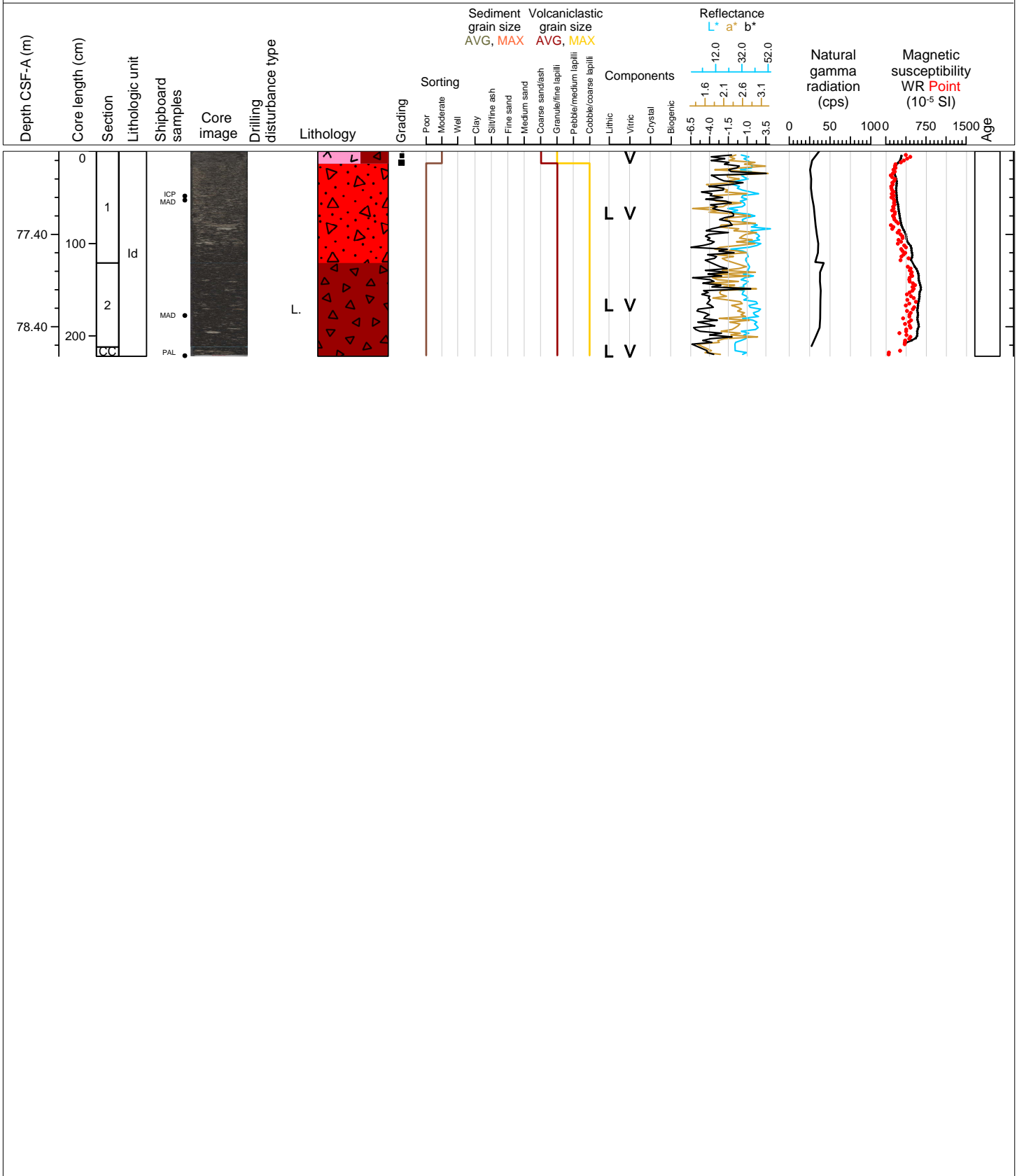
Hole 398-U1595C Core 7F, Interval 71.8-72.28 m (CSF-A)

Ash and lapilli.



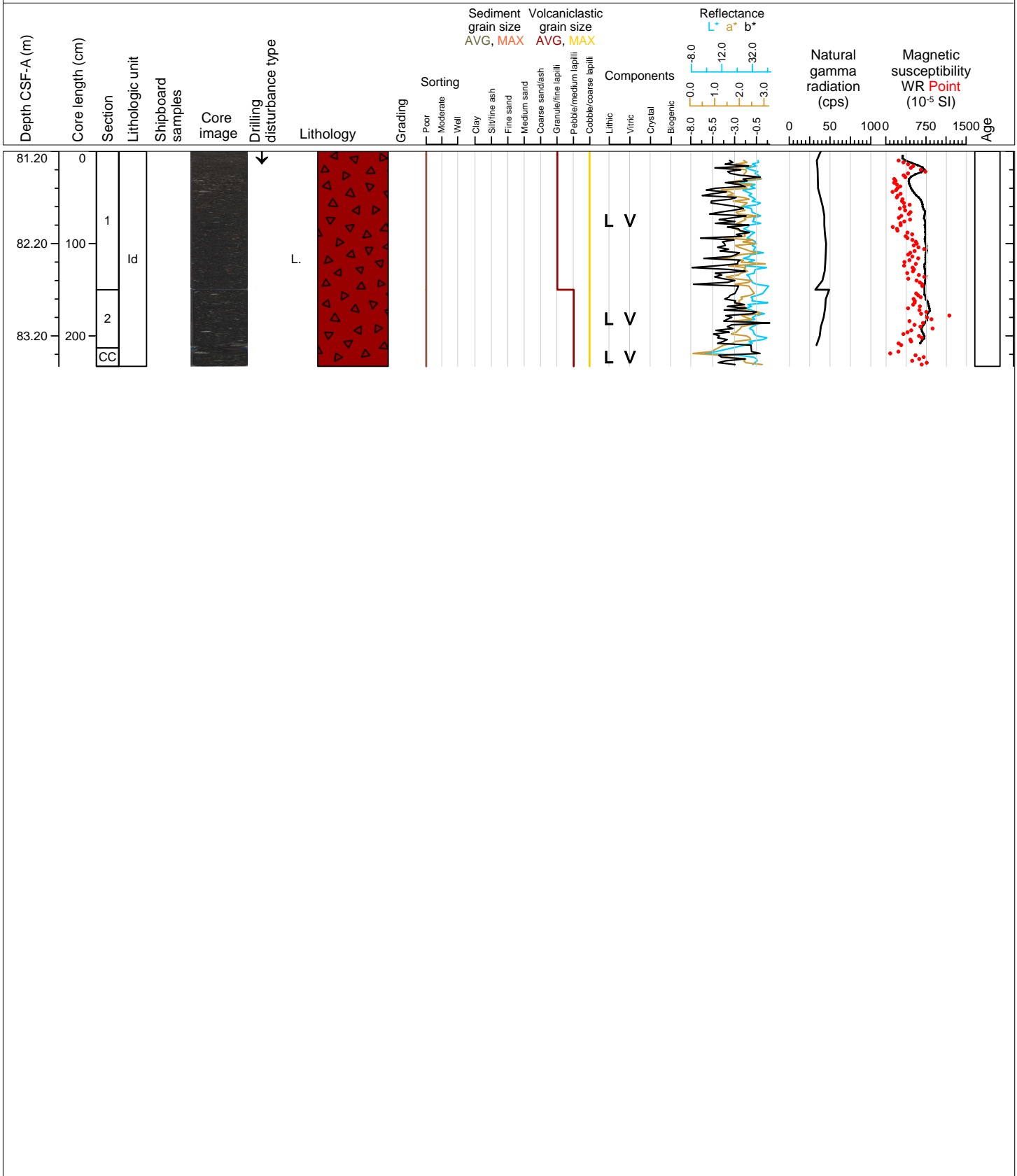
Hole 398-U1595C Core 8F, Interval 76.5-78.72 m (CSF-A)

Ash, lapilli-ash and lithic lapilli.



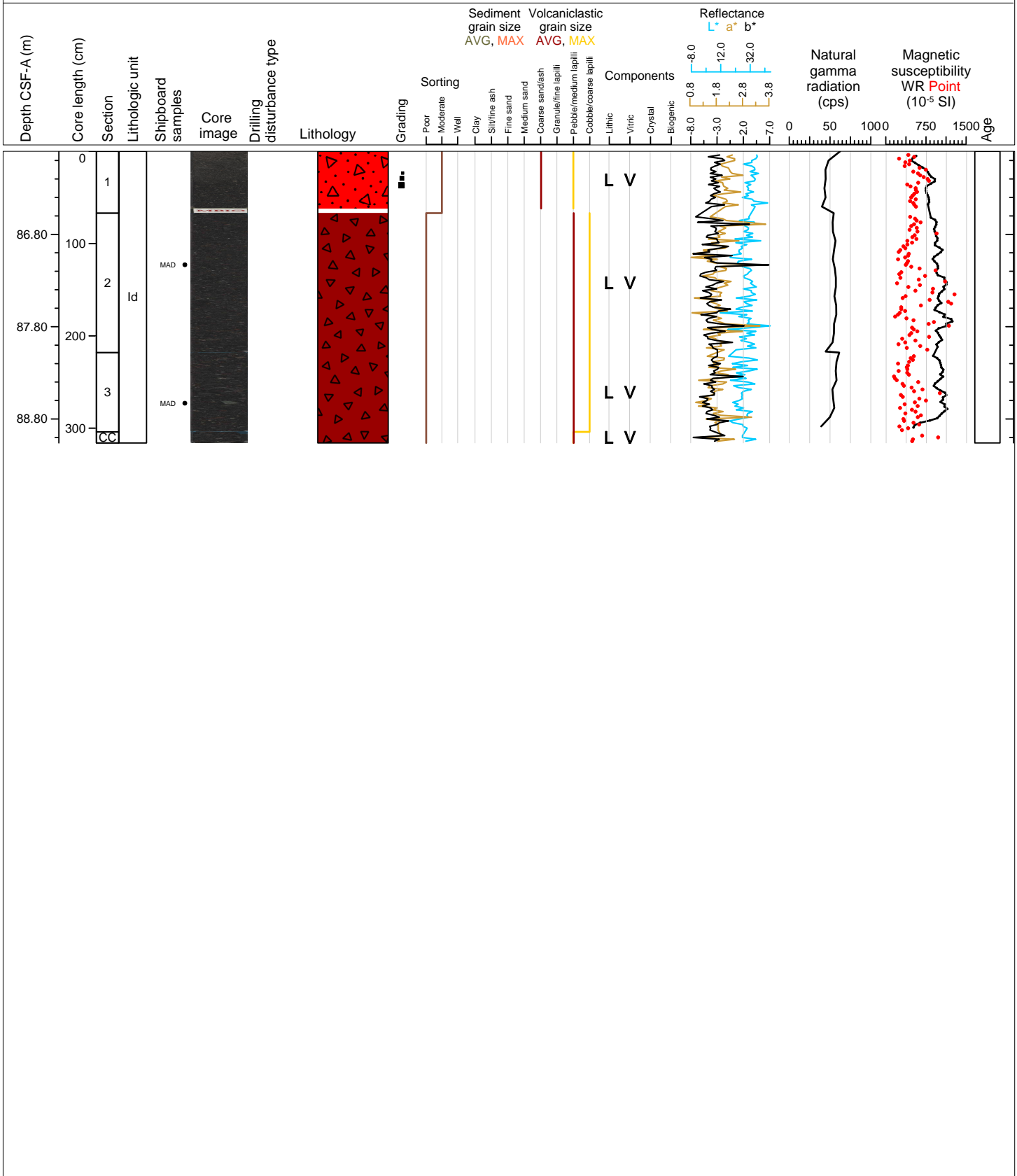
Hole 398-U1595C Core 9F, Interval 81.2-83.53 m (CSF-A)

Lithic lapilli.



Hole 398-U1595C Core 10F, Interval 85.9-89.06 m (CSF-A)

Lithic crystal lapilli-ash and lapilli.



Hole 398-U1595C Core 11F, Interval 90.6-93.33 m (CSF-A)

Lithic crystal lapilli-ash and lapilli.

