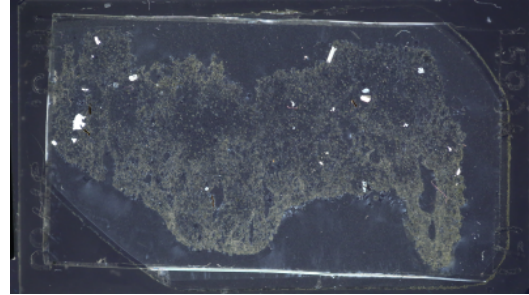


THIN SECTION LABEL ID: **398-U1590A-1H-3-W 57/60-TSB-TS 7** Thin section no.: 7  
 Observer: **RG** Piece no.:  
Unit/subunit:  
 Thin section summary: **Light-colored, highly vesicular, porphyritic and slightly mingled pumice, with sparse phenocrysts of plagioclase, biotite and accessory orthopyroxene in a glassy groundmass.**

Plane-polarized: 67631311



Cross-polarized: 67631331



**Igneous Petrology**

**Lithology:** rhyolite

**Grain size distribution:** porphyritic

**Texture:** vesicular

**Groundmass grain size (avg.):**

**Phenocryst proportion (%):** 2

**Groundmass proportion (%):** 98

Constituents	Abundance	Size max. (mm)	Shape	Comments
Plagioclase	dominant	1.1	subhedral	
Biotite	abundant	0.8	euheral	

**Vesicle abundance (%):** 75

**Vesicle shape:** elongate

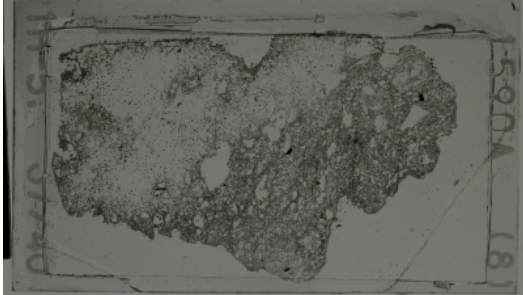
**Vesicle max. size (mm):** 1.5

**Degree of alteration:** fresh

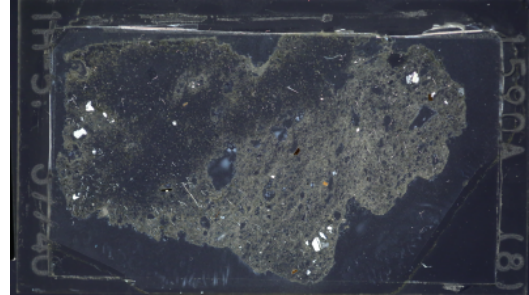
**Alteration comments:**

THIN SECTION LABEL ID: **398-U1590A-1H-5-W 37/40-TSB-TS 8** Thin section no.: 8  
 Observer: **RG** Piece no.:  
 Unit/subunit:  
 Thin section summary: **Light-gray, highly vesicular, porphyritic pumice, with spare phenocrysts of plagioclase and biotite in a glassy groundmass.**

Plane-polarized: 67631351



Cross-polarized: 67631371



**Igneous Petrology**

**Lithology:** andesite

**Grain size distribution:** porphyritic

**Texture:** vesicular

**Groundmass grain size (avg.):**

**Phenocryst proportion (%):** 2

**Groundmass proportion (%):** 98

Constituents	Abundance	Size max. (mm)	Shape	Comments
Plagioclase	dominant	0.8	subhedral	
Orthopyroxene	trace	0.5	euhedral	
Biotite	abundant	0.6	euhedral	

**Vesicle abundance (%):** 70

**Vesicle shape:** elongate,irregular

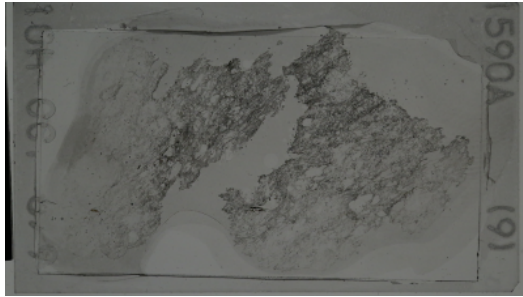
**Vesicle max. size (mm):** 2.5

**Degree of alteration:** fresh

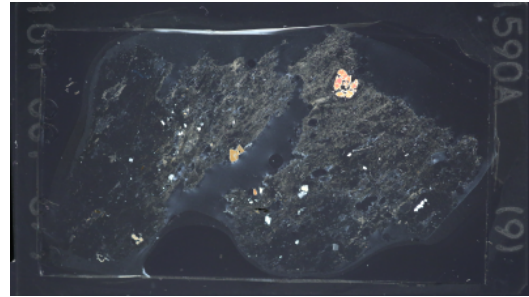
**Alteration comments:**

THIN SECTION LABEL ID: **398-U1590A-10H-CC-W 6/9-TSB-TS 9** Thin section no.: 9  
 Observer: **RG** Piece no.:  
Unit/subunit:  
 Thin section summary: Light-colored, highly vesicular, porphyritic and slightly mingled pumice, with sparse phenocrysts of plagioclase and biotite, and rare xenocrystic olivine in a glassy groundmass.

Plane-polarized: 67729581



Cross-polarized: 67729601



**Igneous Petrology**

**Lithology:** andesite

**Grain size distribution:** porphyritic

**Texture:** vesicular

**Groundmass grain size (avg.):**

**Phenocryst proportion (%):** 2

**Groundmass proportion (%):** 98

Constituents	Abundance	Size max. (mm)	Shape	Comments
Olivine	trace	2.5	euhedral	xenocrystic
Plagioclase	dominant	2	subhedral	
Biotite	abundant	0.7	euhedral	

**Vesicle abundance (%):** 75

**Vesicle shape:** elongate

**Vesicle max. size (mm):** 3

**Degree of alteration:** fresh

**Alteration comments:**