

THIN SECTION LABEL ID: **400-U1604A-6H-CC-PAL-TSB#6-TS#7**

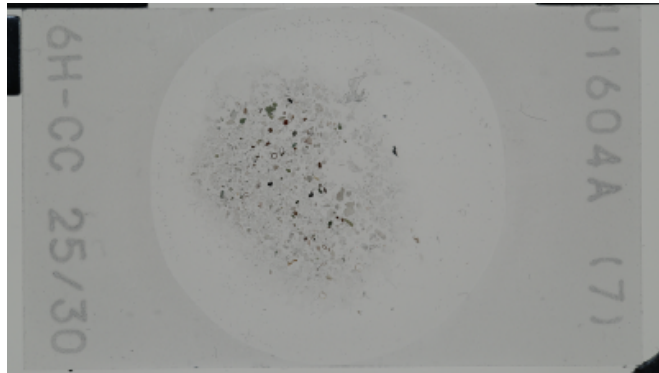
Thin section no.: **7**

Observer:

Unit/subunit:

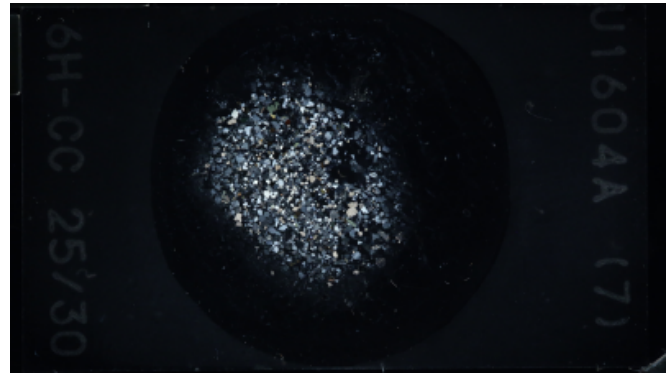
Thin section summary: Grain mount. Washed fraction from PAL. Fine fraction. Subrounded to subangular clasts dominated by quartz and feldspar, with common granite and amphibole grains.

Plane-polarized



73893751

Cross-polarized



73893771

Sediments & Sedimentary Rock

Lithology:

Lithic grains specifics:	igneous, sedimentary, metamorphic	Lithic grains comments:	Common felsic, common gneiss, rare quartzite, common carbonate, and rare mudrock
Mineral grains:	quartz, feldspar, mica, other	Mineral grain comments:	Dominant quartz, rare k-spar and plagioclase, rare biotite, and common others include opaque with red, hornblende, and chlorite
Macrofossils:	foraminifers	Comments on fossils:	Trace agglutinated 2 chamber forams

THIN SECTION LABEL ID: **400-U1604A-19H-CC-PAL-TSB#7-TS#8**

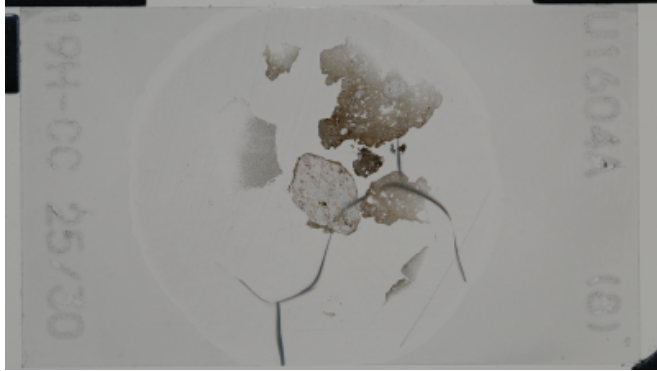
Thin section no.: **8**

Observer:

Unit/subunit:

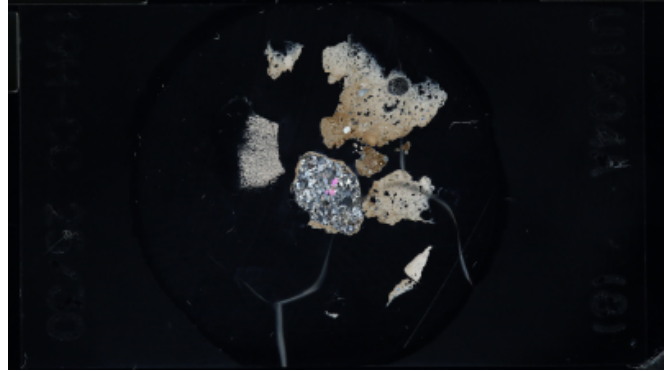
Thin section summary: Grain mount. Washed fraction from PAL. Coarse fraction. Four silty carbonate grains (these may be matrix material that was not fully broken down in washing), one granite clast coated in silty carbonate, and one clast of peloidal limestone with a grainstone texture.

Plane-polarized



73894471

Cross-polarized



73894491

Sediments & Sedimentary Rock

Lithology: calcareous mud

Lithic grains specifics:	igneous, sedimentary	Lithic grains comments:	Abundant felsic and common carbonate
---------------------------------	----------------------	--------------------------------	--------------------------------------

THIN SECTION LABEL ID: **400-U1604A-19H-CC-PAL-TSB#8-TS#9**

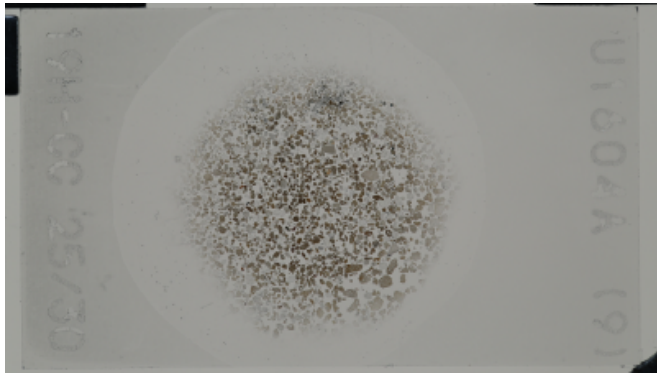
Thin section no.: **9**

Observer:

Unit/subunit:

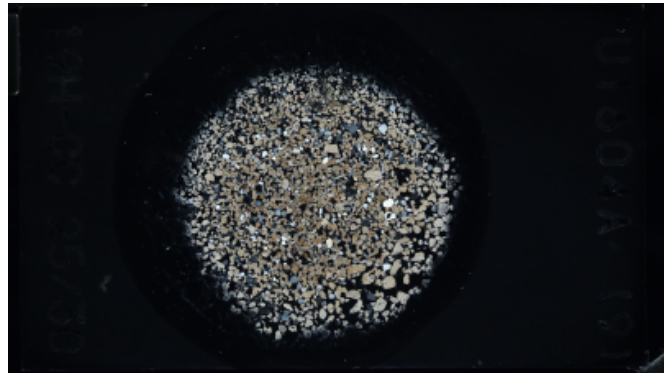
Thin section summary: Grain mount. Washed fraction from PAL. Lots of calcareous siltstone fragments. These may not have been broken down during washing.

Plane-polarized



73893931

Cross-polarized



73893951

Sediments & Sedimentary Rock

Lithology: calcareous mud

Lithic grains specifics:	igneous, sedimentary	Lithic grains comments:	Common felsic and rare carbonate
Mineral grains:	feldspar, quartz	Mineral grain comments:	Common quartz and feldspar

THIN SECTION LABEL ID: **400-U1604A-28X-1-W 2/4-TSB-TS#12**

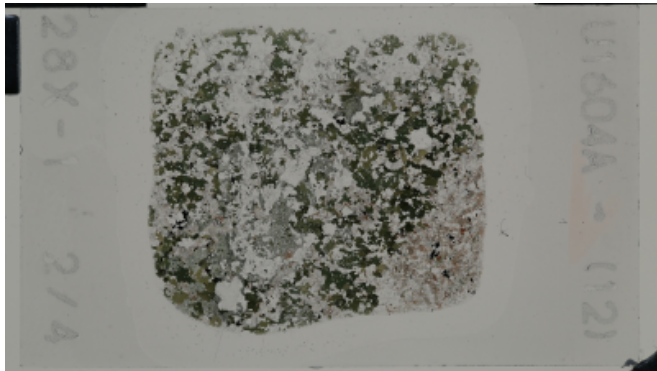
Thin section no.: **12**

Observer:

Unit/subunit:

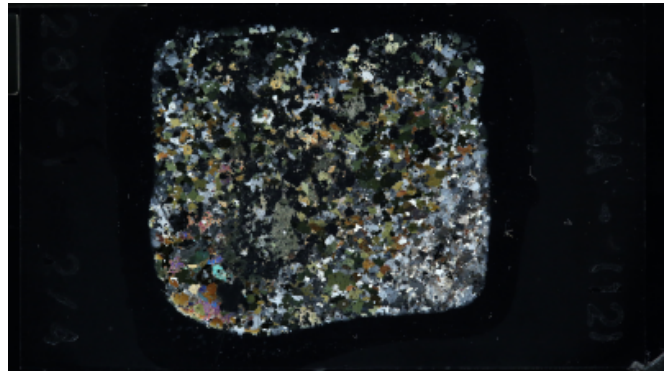
Thin section summary: Plutonic igneous rock dominated by coarse grains of quartz, feldspar, and amphibole.

Plane-polarized



73894431

Cross-polarized



73894451

Sediments & Sedimentary Rock

Lithology:

Lithic grains specifics:	igneous	Lithic grains comments:	Intermediate
Mineral grains:	quartz, feldspar, pyroxene, mica	Mineral grain comments:	

THIN SECTION LABEL ID: **400-U1604A-28X-CC-PAL-TSB#9-TS#10**

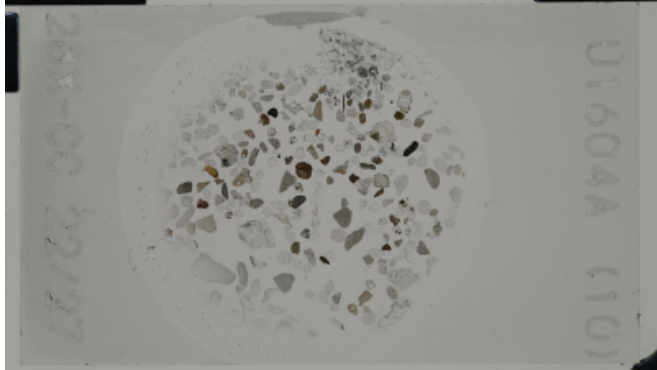
Thin section no.: **10**

Observer:

Unit/subunit:

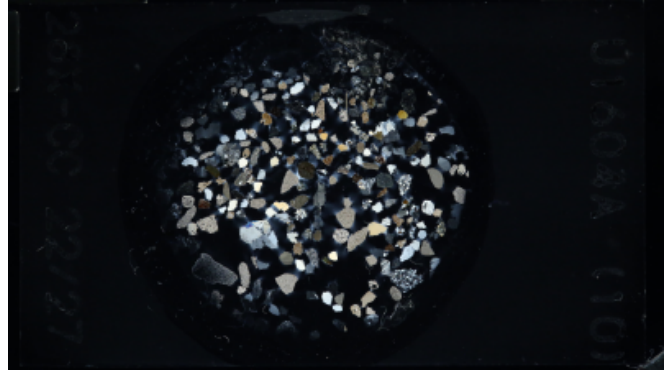
Thin section summary: Grain mount. Subrounded to subangular grains of plutonic and sedimentary rock fragments, along with mineral grains (quartz, feldspar, and pyroxene/amphibole).

Plane-polarized



73894391

Cross-polarized



73894411

Sediments & Sedimentary Rock

Lithology:

Lithic grains specifics:	igneous, sedimentary	Lithic grains comments:	Abundant felsic, common carbonate, and rare mudrock with carbonate cement
Mineral grains:	quartz, feldspar, pyroxene	Mineral grain comments:	Common quartz, common feldspar, and trace pyroxene

THIN SECTION LABEL ID: **400-U1604B-15X-CC-W 11/13-TSB#10-TS#11**

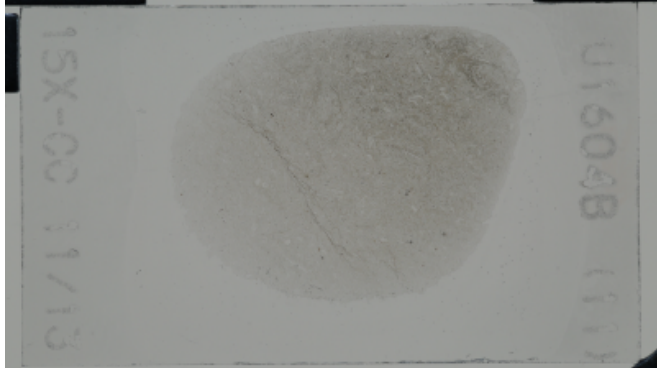
Thin section no.: **11**

Observer:

Unit/subunit:

Thin section summary: Boulder recovered in core. Skeletal limestone with wackestone to packstone texture. Contains fragments of crinoids, brachiopods, and trilobites. Heavily altered (recrystallized), but likely still calcite.

Plane-polarized



73895081

Cross-polarized



73895101

Sediments & Sedimentary Rock

Lithology:

Macrofossils:	foraminifers	Comments on fossils:	Trace foraminifera		
Cement mineralogy:	carbonate	Cement mineralogy and type:			
Porosity:	moderate porosity	Porosity rank:	3	Porosity type:	Secondary

THIN SECTION LABEL ID: **400-U1604B-22H-3-W 101/105-TSB-TS#13**

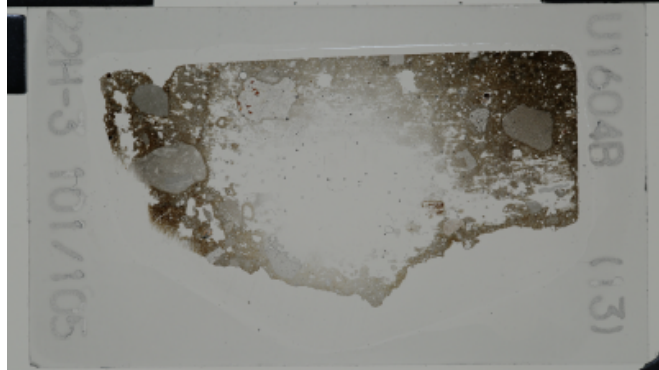
Thin section no.: **13**

Observer:

Unit/subunit:

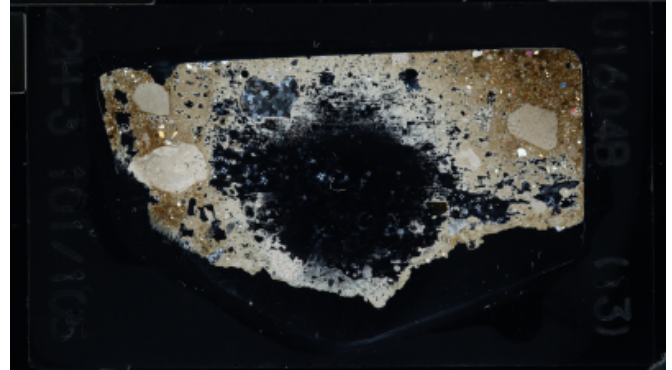
Thin section summary: Calcareous sandstone/conglomerate. Calcareous matrix with coarse rounded clasts of plutonic igneous rock fragments, carbonate rock fragments, and grains of quartz and feldspar.

Plane-polarized



73917801

Cross-polarized



73917821

Sediments & Sedimentary Rock

Lithology: calcareous sand

Lithic grains specifics:	igneous, sedimentary	Lithic grains comments:	Common felsic and common carbonate
Mineral grains:	quartz, feldspar	Mineral grain comments:	Abundant quartz and common feldspar
Grain-to-grain contacts:		Matrix comments:	Carbonate matrix

THIN SECTION LABEL ID: **400-U1604B-29H-1-W 3/6-TSB-TS#17**

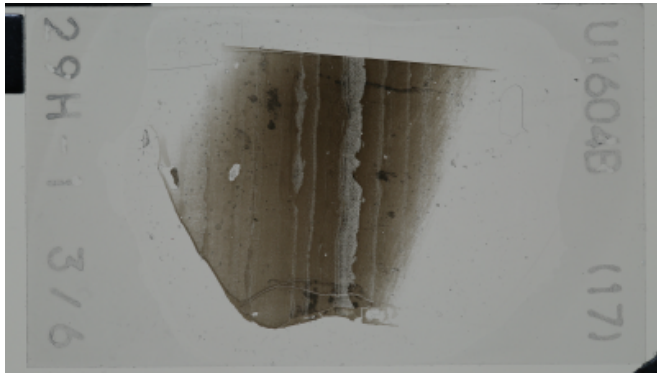
Thin section no.: **17**

Observer:

Unit/subunit:

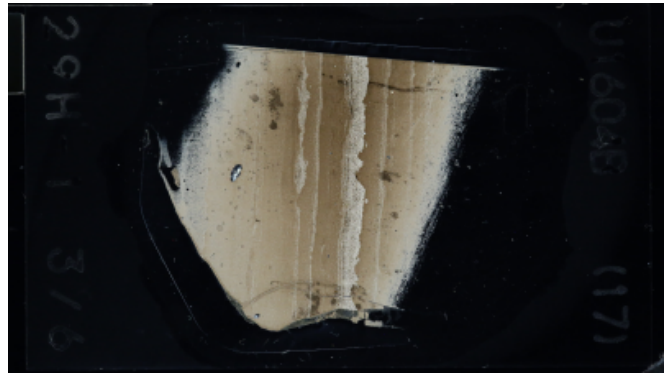
Thin section summary: Cemented interval, possible concretion, in interlaminated sand and mud. Carbonate cemented. Fining upwards fabric in silt laminae preserved.

Plane-polarized



73917841

Cross-polarized



73917861

Sediments & Sedimentary Rock

Lithology:

Cement mineralogy:	carbonate	Cement mineralogy and type:	
--------------------	-----------	-----------------------------	--

THIN SECTION LABEL ID: **400-U1604B-35F-3-W 40/43-TSB#13-TS#14**

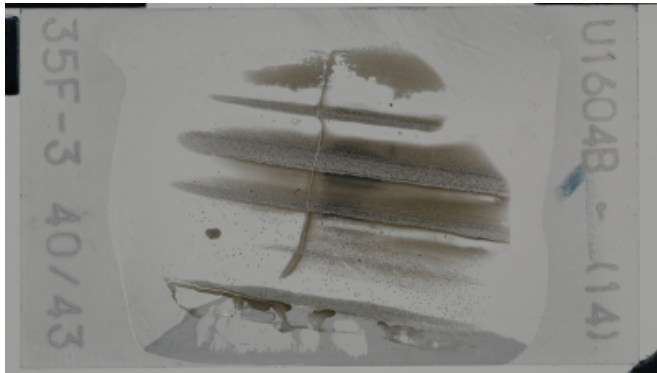
Thin section no.: **14**

Observer:

Unit/subunit:

Thin section summary: Cemented interval, possible concretion, in interlaminated sand and mud. Carbonate cemented. Fining upwards fabric in silt laminae preserved.

Plane-polarized



73894951

Cross-polarized



73894971

Sediments & Sedimentary Rock

Lithology: silty mudstone

Mineral grains:	quartz, feldspar, other	Mineral grain comments:	Abundant quartz, and trace feldspar, with clay
Grain-to-grain contacts:		Matrix comments:	Carbonate matrix
Cement mineralogy:	carbonate	Cement mineralogy and type:	Intergranular

THIN SECTION LABEL ID: **400-U1604B-39X-1-W 91/100-TSB#15-TS#16**

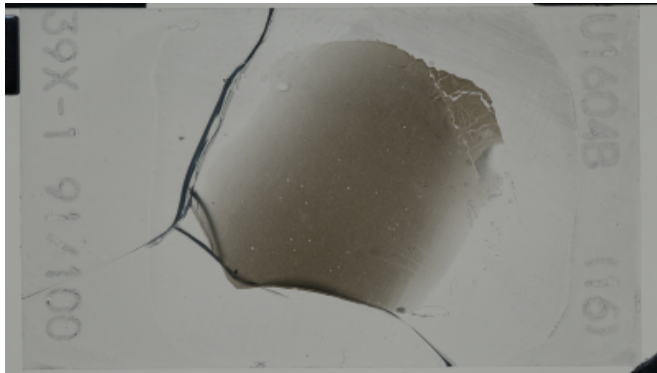
Thin section no.: **16**

Observer:

Unit/subunit:

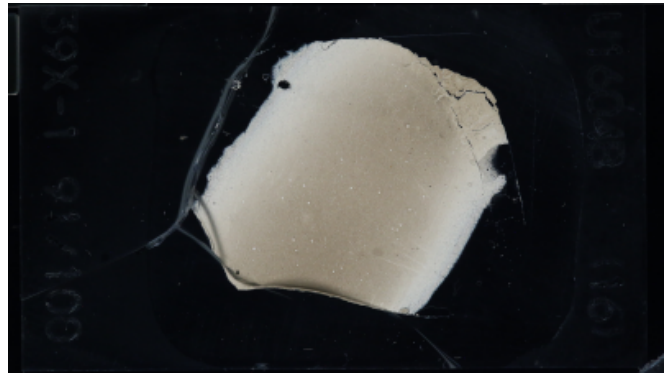
Thin section summary: Limestone clast interpreted as ice-rafted debris. Mudstone-wackestone texture, very fine-grained. Contains cement-filled molds after microfossils (spheres, spines).

Plane-polarized



73895041

Cross-polarized



73895061

Sediments & Sedimentary Rock

Lithology:

Grain-to-grain contacts:		Matrix comments:	Carbonate matrix		
Cement mineralogy:	carbonate	Cement mineralogy and type:	Intergranular		
Porosity:	no porosity	Porosity rank:	1	Porosity type:	

THIN SECTION LABEL ID: **400-U1604B-42X-3-IW(136-146)-TSB#14-TS#15**

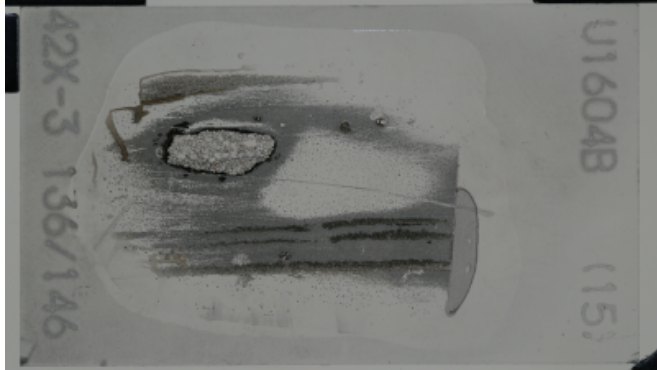
Thin section no.: **15**

Observer:

Unit/subunit:

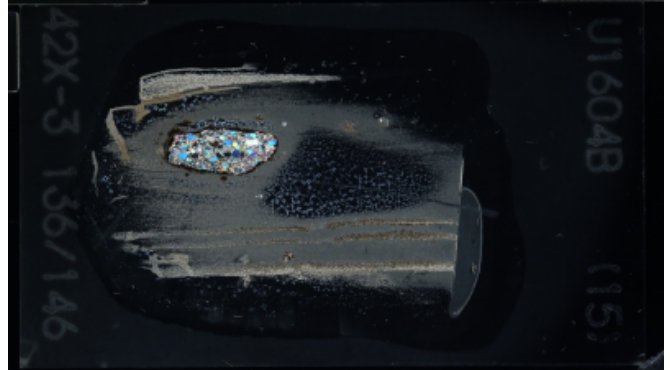
Thin section summary: Cemented interval, possible concretion, in interlaminated sand and mud with dispersed clasts. Carbonate cemented. Fining upwards fabric in silt laminae preserved. 1 cm clast of igneous plutonic rock.

Plane-polarized



73894991

Cross-polarized



73895021

Sediments & Sedimentary Rock

Lithology:

Lithic grains specifics:	sedimentary	Lithic grains comments:	
Grain-to-grain contacts:		Matrix comments:	Carbonate matrix
Cement mineralogy:	carbonate	Cement mineralogy and type:	Cemented interval, possible concretion, in interlaminated sand and mud