

THIN SECTION LABEL ID: **400-U1605A-2R-1-W 21/24-TSB#17-TS#18**

Thin section no.: **18**

Observer:

Unit/subunit:

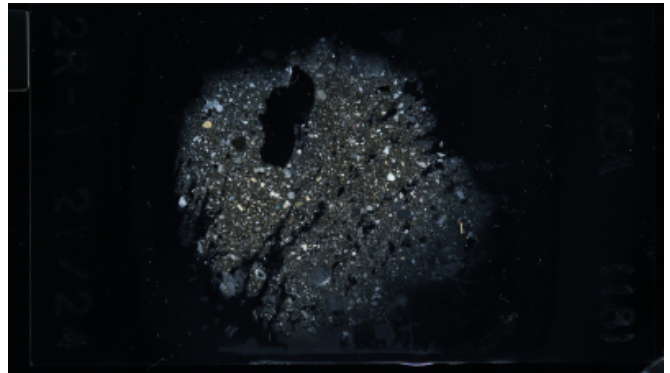
Thin section summary: **Diamicton. Unable to be processed.**

Plane-polarized



74087891

Cross-polarized



74087911

Sediments & Sedimentary Rock

Lithology:

Lithic grains specifics:	sedimentary	Lithic grains comments:	diamicton unable to assess
---------------------------------	-------------	--------------------------------	----------------------------

THIN SECTION LABEL ID: **400-U1605A-3R-CC-W 11/15-TSB#18-TS#19**

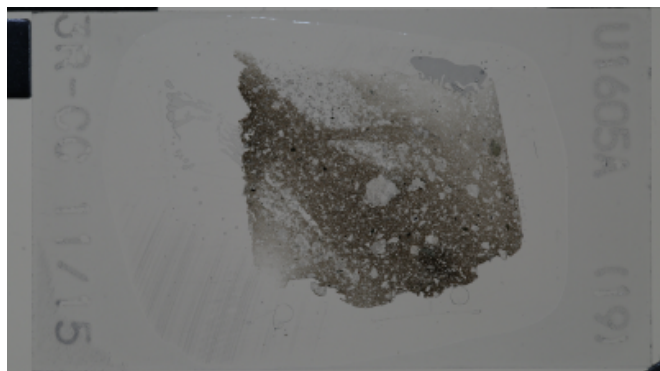
Thin section no.: **19**

Observer:

Unit/subunit:

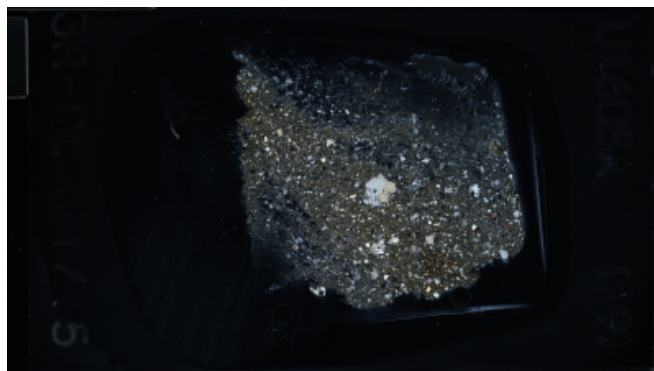
Thin section summary: **Diamicton. Unable to be processed.**

Plane-polarized



74087531

Cross-polarized



74087561

Sediments & Sedimentary Rock

Lithology:

Lithic grains specifics:

sedimentary

Lithic grains comments:

diamicton unable to assess

THIN SECTION LABEL ID: **400-U1605A-27R-1-W 36/39-TSB-TS#20**

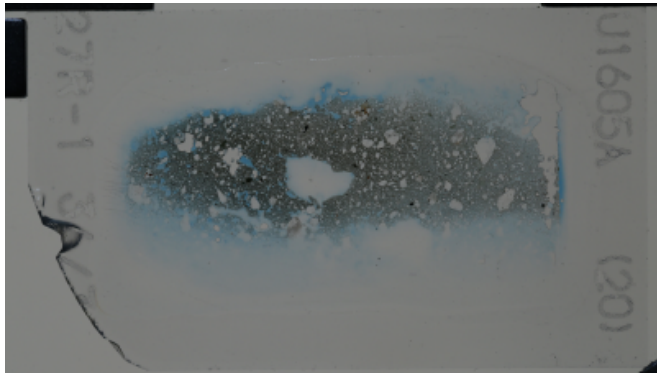
Thin section no.: **20**

Observer:

Unit/subunit:

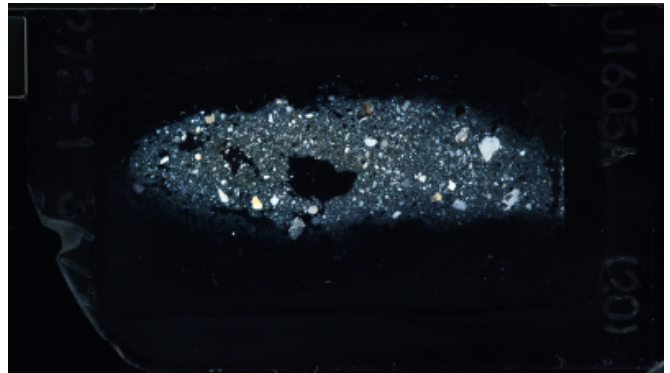
Thin section summary: Diamicton. Unable to be processed.

Plane-polarized



74477431

Cross-polarized



74477451

Sediments & Sedimentary Rock

Lithology:

Lithic grains specifics:	sedimentary	Lithic grains comments:	diamicton unable to assess
--------------------------	-------------	-------------------------	----------------------------

THIN SECTION LABEL ID: **400-U1605A-29R-1-W 32/33-TSB#20-TS#21**

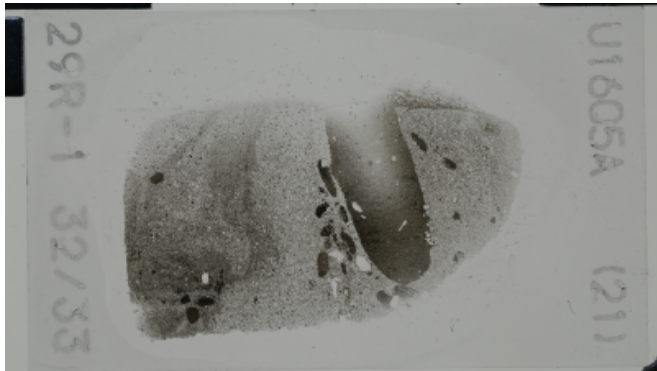
Thin section no.: **21**

Observer:

Unit/subunit:

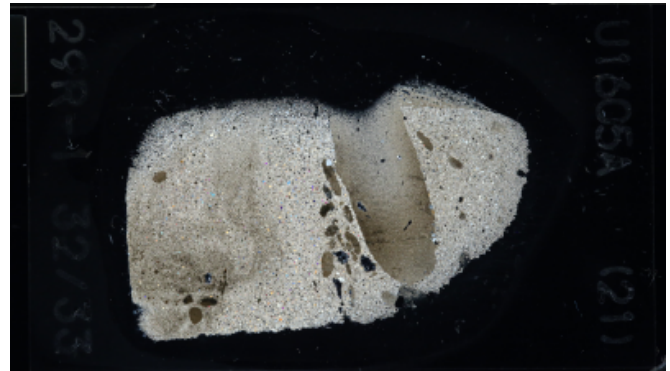
Thin section summary: Washed pebble, presumed ice-rafted debris. Silty intraclastic limestone.

Plane-polarized



73917881

Cross-polarized



73917901

Sediments & Sedimentary Rock

Lithology:

Lithic grains specifics:	igneous, sedimentary, metamorphic	Lithic grains comments:	Abundant felsic, rare gneiss, and trace chert		
Mineral grains:	quartz, feldspar, mica	Mineral grain comments:	Common quartz, common feldspar, and rare mica		
Microfabric/deformation:		Textural maturity:	Medium	Mineralogical maturity:	Medium
Grain-to-grain contacts:	point	Matrix comments:			
Cement mineralogy:	carbonate	Cement mineralogy and type:	Calcite, coarse blocky		
Porosity:	no porosity	Porosity rank:	1	Porosity type:	

THIN SECTION LABEL ID: **400-U1605A-38R-1-W 0/2-TSB#21-TS#22**

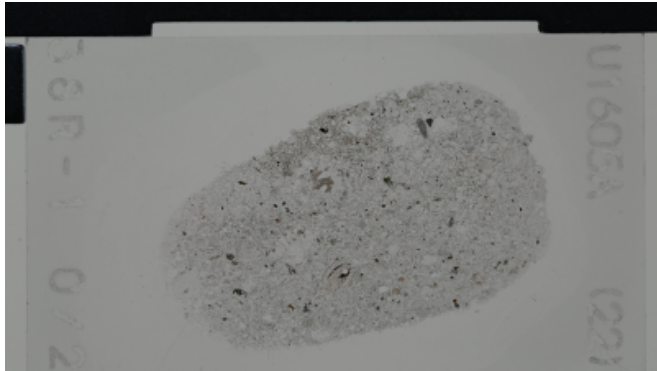
Thin section no.: **22**

Observer:

Unit/subunit: **IB**

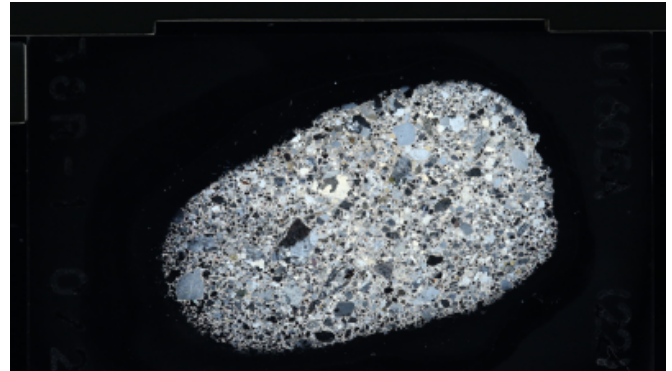
Thin section summary: Pebble at top of Section 1, presumed ice rafted debris. Coarse, poorly sorted lithic sandstone. Framework grains are dominated by plutonic igneous rock fragments, quartz, and feldspar, with chert, and metamorphic rock fragments. Intergranular pore space filled with coarse, blocky calcite cement.

Plane-polarized



73937771

Cross-polarized



73937791

Sediments & Sedimentary Rock

Lithology: sandstone

Lithic grains specifics:	sedimentary, igneous, metamorphic	Lithic grains comments:	Framework grains are dominated by plutonic igneous rock fragments, quartz, and feldspar, with chert, and metamorphic rock fragments
---------------------------------	-----------------------------------	--------------------------------	---

Cement mineralogy:	carbonate	Cement mineralogy and type:	Intergranular pore space filled with coarse, blocky calcite cement.
---------------------------	-----------	------------------------------------	---