

**THIN SECTION LABEL ID: 402-U1613A-16R-CC-W 18/20-TSB-TS#15**

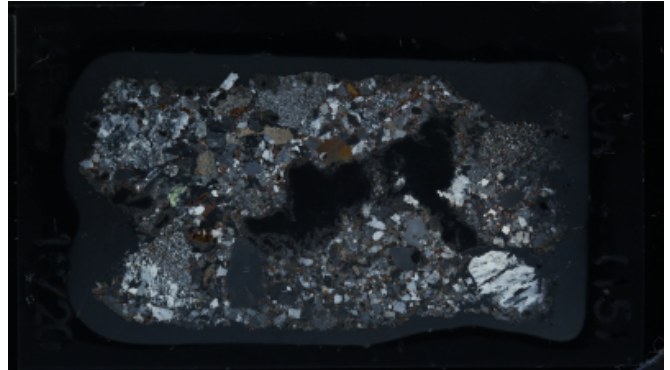
Group	Summaries
Sedimentary-rocks:	sandy mudstone
Igneous petrology:	no igneous features
Alterations features:	altered

Plane-polarized



77111081

Cross-polarized



77111041

**SEDIMENTARY ROCKS**

**Lithology full name:** sandy mudstone

**Observer:**

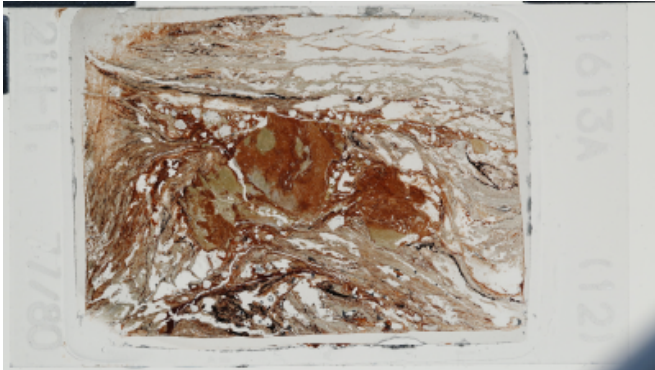
**Summary of sediment features:**

Sorting	Lithoclast roundness	Porosity
moderately sorted	subrounded	moderate porosity
Clast lithology principal name		Clast mineralogy
sandstone		

**THIN SECTION LABEL ID: 402-U1613A-21R-1-W 77/80-TSB#12-TS#12**

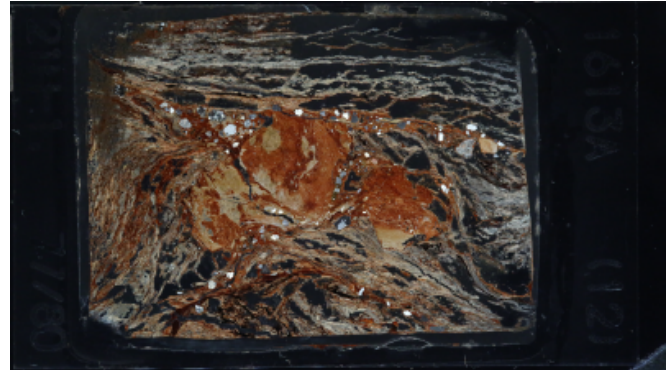
Group	Summaries
Sedimentary-rocks:	lithoclast of red shale in a quartz-bearing matrix
Igneous petrology:	no igneous features
Alterations features:	altered

Plane-polarized



77197061

Cross-polarized



77197081

**SEDIMENTARY ROCKS**

**Lithology full name:** sandy siltstone

**Observer:**

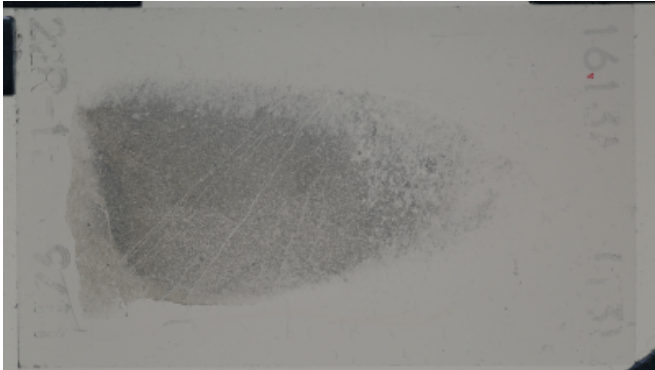
**Summary of sediment features:** lithoclast of red shale in a quartz-bearing matrix

Sorting	Lithoclast roundness	Porosity
very poorly sorted	very angular	high porosity
Clast lithology principal name	Clast mineralogy	
claystone		

**THIN SECTION LABEL ID: 402-U1613A-22R-1-W 9/11-TSB-TS#13**

Group	Summaries
Sedimentary-rocks:	carbonate with quartz clasts
Igneous petrology:	no igneous features
Alterations features:	fresh

Plane-polarized



77111021

Cross-polarized



77110921

**SEDIMENTARY ROCKS**

**Lithology full name:** carbonate

**Observer:**

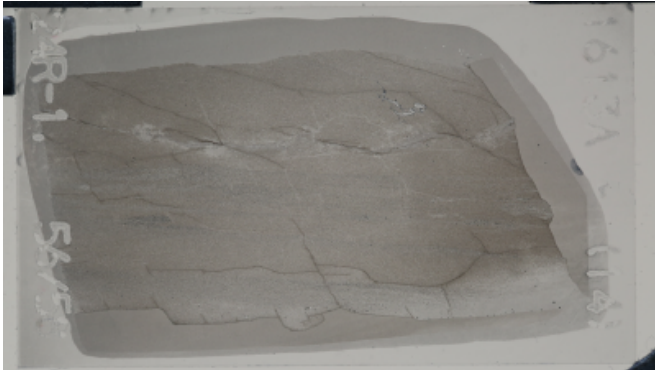
**Summary of sediment features:** fine grained carbonate with quartz clasts

Sorting	Lithoclast roundness	Porosity
moderately sorted	subrounded	no porosity
Clast lithology principal name		Clast mineralogy
		quartz, carbonate

**THIN SECTION LABEL ID: 402-U1613A-24R-1-W 56/60-TSB-TS#14**

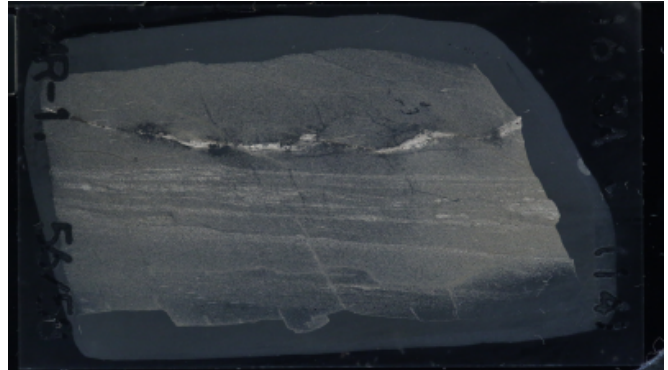
Group	Summaries
Sedimentary-rocks:	carbonaceous black shale with organic matter and sulfides
Igneous petrology:	no igneous features
Alterations features:	fresh

Plane-polarized



77708811

Cross-polarized



77708831

**SEDIMENTARY ROCKS**

**Lithology full name:** black shale **Observer:**

**Summary of sediment features:** black shale fine grain with clay minerals, organic material, carbonates, titanite

Sorting	Lithoclast roundness	Porosity
moderately sorted	subrounded	no porosity

Clast lithology principal name	Clast mineralogy
	titanite, dolomite, sulfides, micas, carbonates