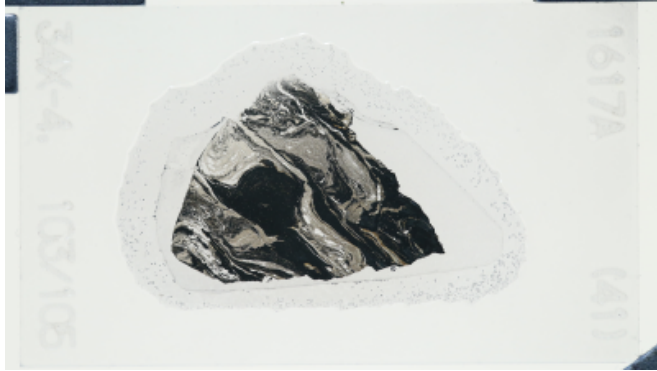


**THIN SECTION LABEL ID: 402-U1617A-34X-4-W 103/105-34615-TSB#41-TS#41**

<b>Group</b>	<b>Summaries</b>
Sedimentary-rocks:	black shale with fine grain clay minerals and oxide-rich layers

Plane-polarized



78342911

Cross-polarized



78342891

**SEDIMENTARY ROCKS**

**Lithology full name:** black shale

**Observer:**

**Summary of sediment features:** black shale with fine grain clay minerals and oxide-rich layers

**THIN SECTION LABEL ID: 402-U1617B-15R-1-W 117/120-TSB#61-TS#61**

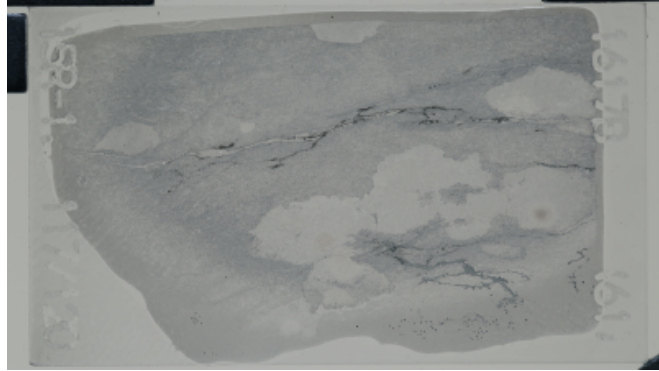
**Group**

**Summaries**

Sedimentary-rocks:

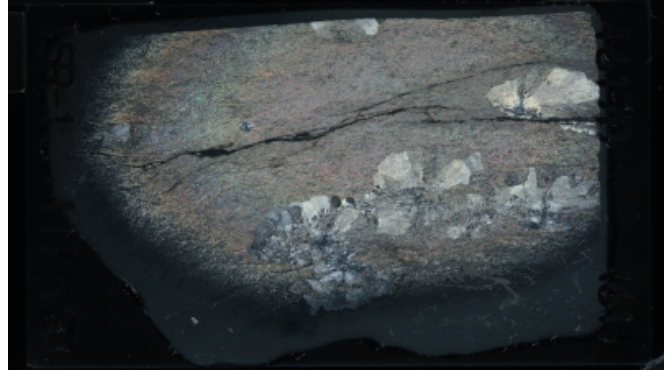
matrix of lath-shaped anhydrite crystals with large crystals of gypsum containing anhydrite nodules with stellate arrangement

Plane-polarized



78499561

Cross-polarized



78499581

**SEDIMENTARY ROCKS**

**Lithology full name:** anhydrite with gypsum

**Observer:**

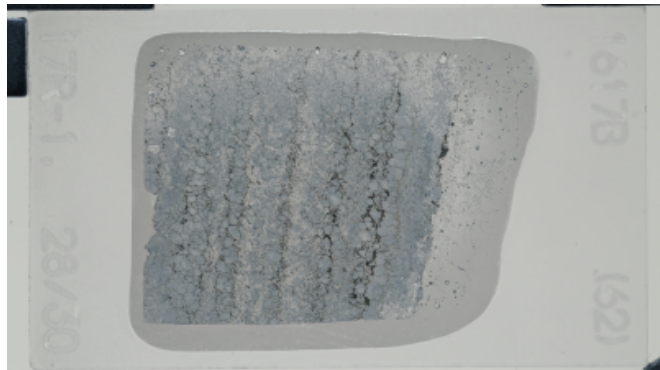
**Summary of sediment features:** matrix of lath-shaped anhydrite crystals with large crystals of gypsum containing anhydrite nodules with stellate arrangement

Sorting	Lithoclast roundness	Porosity
well sorted		low porosity

**THIN SECTION LABEL ID: 402-U1617B-17R-1-W 28/30-TSB#62-TS#62**

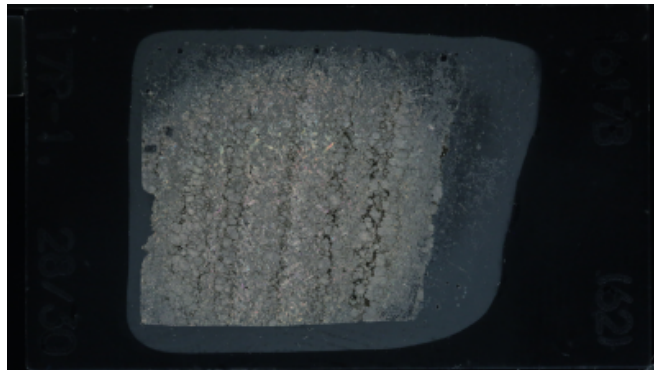
**Group**                      **Summaries**  
 Sedimentary-rocks:      anhydrite-dolomite bands (lath-shaped anhydrite crystals)

Plane-polarized



78499621

Cross-polarized



78499601

**SEDIMENTARY ROCKS**

**Lithology full name:**      dolomitic anhydrite

**Observer:**

**Summary of sediment features:**      anhydrite-dolomite bands (lath-shaped anhydrite crystals)

Sorting	Lithoclast roundness	Porosity
moderately sorted		low porosity

**THIN SECTION LABEL ID: 402-U1617B-22R-2-W 52/55-TSB-TS#63**

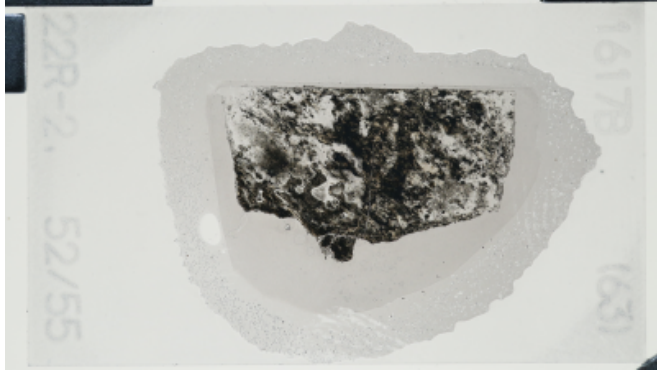
**Group**

**Summaries**

Sedimentary-rocks:

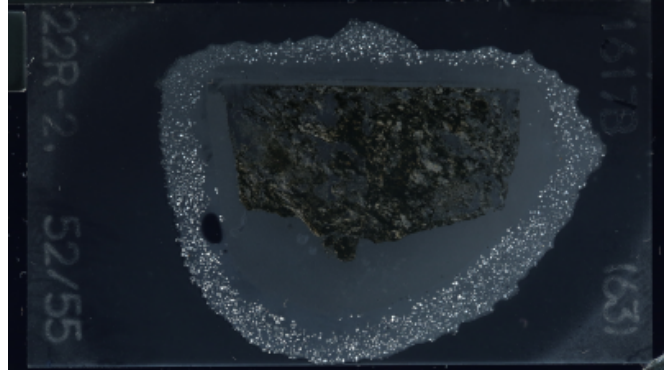
black shale with fine grain clay rich layers and organic/iron rich layers

Plane-polarized



78562751

Cross-polarized



78563221

**SEDIMENTARY ROCKS**

**Lithology full name:** black shale

**Observer:**

**Summary of sediment features:** black shale with fine grain clay rich layers and organic/iron rich layers

Sorting	Lithoclast roundness	Porosity
		low porosity