

**Integrated Ocean Drilling Program  
Expedition 308 Scientific Prospectus**

**Gulf of Mexico Hydrogeology**

**Overpressure and fluid flow processes in the deepwater  
Gulf of Mexico: slope stability, seeps, and shallow-water flow**

Peter B. Flemings  
Co-Chief Scientist  
Department of Geosciences  
The Pennsylvania State University  
307 Deike Building  
University Park PA 16802  
USA

Ian Behrmann  
Co-Chief Scientist  
Albert-Ludwigs-Universität Freiburg  
Geologisches Institut  
Albertstrasse 23b  
79104 Freiburg  
Germany

Cédric John  
Expedition Project Manager  
Department of Earth Sciences  
University of California, Santa Cruz  
1156 High Street  
Santa Cruz CA 95064  
USA

## **PUBLISHER'S NOTES**

Material in this publication may be copied without restraint for library, abstract service, educational, or personal research purposes; however, this source should be appropriately acknowledged.

### Citation:

Flemings, P.B., Behrmann, I., Davies, T., John, C., and the Expedition 308 Project Team, 2005. Gulf of Mexico hydrogeology—overpressure and fluid flow processes in the deepwater Gulf of Mexico: slope stability, seeps, and shallow-water flow. *IODP Sci. Prosp.*, 308. <http://iodp.tamu.edu/publications/SP/308SP/308SP.PDF>.

### Distribution:

Electronic copies of this series may be obtained from the Integrated Ocean Drilling Program (IODP) Publication Services homepage on the World Wide Web at [iodp.tamu.edu/publications](http://iodp.tamu.edu/publications).

This publication was prepared by the Integrated Ocean Drilling Program U.S. Implementing Organization (IODP-USIO): Joint Oceanographic Institutions, Inc., Lamont-Doherty Earth Observatory of Columbia University, and Texas A&M University, as an account of work performed under the international Integrated Ocean Drilling Program, which is managed by IODP Management International (IODP-MI), Inc. Funding for the program is provided by the following agencies:

European Consortium for Ocean Research Drilling (ECORD)

Ministry of Education, Culture, Sports, Science and Technology (MEXT) of Japan

Ministry of Science and Technology (MOST), People's Republic of China

U.S. National Science Foundation (NSF)

## **DISCLAIMER**

Any opinions, findings, and conclusions or recommendations expressed in this publication are those of the author(s) and do not necessarily reflect the views of the participating agencies, IODP Management International, Inc., Joint Oceanographic Institutions, Inc., Lamont-Doherty Earth Observatory of Columbia University, Texas A&M University, or Texas A&M Research Foundation.

This IODP Scientific Prospectus is based on precruise Science Advisory Structure panel discussions and scientific input from the designated Co-Chief Scientists on behalf of the drilling proponents. During the course of the cruise, actual site operations may indicate to the Co-Chief Scientists and the Operations Superintendent that it would be scientifically or operationally advantageous to amend the plan detailed in this prospectus. It should be understood that any proposed changes to the science deliverables outlined in the plan presented here are contingent upon the approval of the IODP-USIO Science Services, TAMU, Deputy Director of Science Services in consultation with IODP-MI.

## **ABSTRACT**

Integrated Ocean Drilling Program Expedition 308 is an abbreviated form of Proposal 589-Full 3 entitled “Overpressure and Fluid Flow Processes in the Deepwater Gulf of Mexico: Slope Stability, Seeps, and Shallow Water Flow.” We will explore the coupling of overpressure, flow, and deformation in passive margin settings. We will test a multidimensional flow model by examining how physical properties, pressure, temperature, and pore fluid composition vary within low-permeability mudstones that overlie a permeable and overpressured aquifer. Drilling, logging, and in situ measurements will be performed in the Brazos-Trinity #4 minibasin and in the Ursa region of the northern Gulf of Mexico. These basins are 300 km apart and have experienced very different Pleistocene sedimentation histories. Brazos-Trinity #4 will serve as a reference location because its low sedimentation rate generated little overpressure. In contrast, Ursa experienced extreme sedimentation rates, has high overpressures, and will serve as a type location to study overpressure and flow. Drilling and consequent postcruise studies will illuminate controls on slope stability, seafloor seeps, and large-scale crustal fluid flow.

Two key components of the experimental plan are to take substantial whole-core geotechnical samples for later shore-based analysis and to deploy a tapered penetrometer, the T2P probe (developed jointly between the Massachusetts Institute of Technology [MIT; USA], the Pennsylvania State University [USA], and IODP) to measure in situ pressure and temperature. Expedition 308 science will meet many of the objectives proposed in the original IODP Proposal 589-Full3 and will provide the foundation to implement long-term in situ monitoring experiments in the aquifer and bounding mudstones in a future expedition to meet the full objectives of IODP Proposal 589-Full3.

## SCHEDULE FOR EXPEDITION 308

Integrated Ocean Drilling Program Expedition 308 is an abbreviated form of Integrated Ocean Drilling Program (IODP) drilling proposal number 589-Full 3 entitled “Overpressure and fluid flow processes in the deepwater Gulf of Mexico: slope stability, seeps, and shallow water flow” (available at [www.iodp-mi-sapporo.org/scheduled.html](http://www.iodp-mi-sapporo.org/scheduled.html)). Following ranking by the IODP Scientific Advisory Structure, the expedition was scheduled by the IODP Operations Committee for the research vessel *JOIDES Resolution*, operating under contract with the U.S. Implementing Organization (USIO). The expedition is currently scheduled to begin in Mobile, Alabama (USA) on 31 May 2005, departing after a 5 day port call (or when ready). The expedition concludes in Balboa, Panama, on 6 July 2005 (for the current detailed schedule, see [www.iodp.tamu.edu/scienceops](http://www.iodp.tamu.edu/scienceops)). A total of 21 days will be available for the drilling, coring, and downhole measurements described in this report. Further details on the *JOIDES Resolution* can be found at [iodp.tamu.edu/publicinfo/drillship.html](http://iodp.tamu.edu/publicinfo/drillship.html).



## INTRODUCTION

### Hydrodynamics of Overpressure

Rapid sediment loading ( $>1$  mm/y) drives overpressure ( $P^*$ , pressure in excess of hydrostatic) in basins around the world (Fertl, 1976; Rubey and Hubbert, 1959). Sedimentation is so rapid that fluids cannot escape, the fluids bear some of the overlying sediment load, and pore pressures are greater than hydrostatic (Fig. F1).

Recent work has focused on how sedimentation and common stratigraphic architectures couple to produce two- and three-dimensional flow fields. For example, if a permeable sand is rapidly loaded by a low-permeability mud of varying thickness, fluids flow laterally to regions of low overburden before they are expelled into the overlying sediment (Fig. F2). This creates characteristic distributions of rock properties, fluid pressure, effective stress, temperature, and fluid chemistry in the aquifers and bounding mudstones (Fig. F2). This simple process can cause slope instability near the seafloor (e.g., Figs. F1, F2, F3) (Dugan and Flemings, 2000; Flemings et al., 2002); in the deeper subsurface, this process drives fluids through low-permeability strata to ultimately vent the seafloor (Fig. F3) (Boehm and Moore, 2002; Davies et al., 2002; Seldon and Flemings, 2005).

Expedition 308 will document the spatial variation in pressure, stress, and rock properties in a flow-focusing environment. We will compare our observations to the model predictions. We will first establish rock and fluid properties at a reference location (Brazos-Trinity). We will then drill multiple holes along a transect in the over-pressured Ursa system to characterize spatial variation in rock properties, temperature, pressure, and chemistry.

## **BACKGROUND**

### **Geological Overview: The Gulf of Mexico**

The Gulf of Mexico is a type location for a shallow drilling campaign aimed at understanding how sedimentation drives compaction and fluid flow (Fig. F4). Sedimentation, deformation, hydrodynamics, slope stability, and biological communities are interwoven in the Pleistocene strata of the Gulf of Mexico. Rapid sedimentation upon a mobile salt substrate is the driving force behind many of the active processes present (Worrall and Snelson, 1989). Bryant et al. (1990) describe the physiographic and bathymetric characteristics of this continental slope (Fig. F4). In the region of offshore Texas and western Louisiana, individual slope minibasins are surrounded by elevated salt highs (Pratson and Ryan, 1994) producing a remarkable hummocky topography. This morphology is obscured in the eastern Gulf, where sedimentation has been very rapid and more recent than the region of offshore Texas and Louisiana. To evaluate the impacts of different depositional settings and rates on sediment properties and fluid flow, Pleistocene sediments will be drilled in the Brazos-Trinity Basin #4 and the Ursa Basin (Fig. F4).

### **Geological Setting: Brazos-Trinity Basin #4**

The Brazos-Trinity Basin #4 is 200 km due south of Galveston, Texas (USA) in ~1400 m water depth (Figs. F4, F5). The basin is one of a chain of five basins that are connected by interbasinal highs. It is a classic area for analysis of turbidite depositional environments because it is used as a modern analog to describe the formation of deep-water turbidite deposits (Anderson and Fillon, 2004; Badalini et al., 2000; Beaubouef and Friedmann, 2000; Fraticelli, 2003; Morton and Sutter, 1996; Satterfield and Behrens, 1990; Suter and Berryhill, 1985; Winker, 1996; Winker and Booth, 2000).

The primary data set used to evaluate the well locations is a high-resolution two-dimensional (2-D) seismic survey shot by Shell Exploration and Production Company

to image the turbidite stratigraphy (Fig. F6). The line spacing is ~300 m. The four proposed drilling locations are shown on dip seismic Line 3020 (Fig. F7). A strike line through proposed Site BT4-2A is also illustrated (Fig. F8).

Proposed Site BT4-2A (Figs. F5, F6, F7, F8) is located where the turbidite deposits are thickest, whereas proposed Site BT4-4A (Figs. F5, F6, F7) is along the southern flank of the basin where there are almost no turbidite deposits. Shell drilled the Brazos-Trinity Basin #2 and encountered basinal turbidites composed of interbedded sands and mudstones and an underlying hemipelagic mudstone. Recovery may be difficult in the poorly consolidated turbidite sands at Site BT4-2A. Alternate sites BT4-3A and BT4-4A will have drilling conditions similar to BT4-1B, as they are located on the basin flank.

## **Geological Setting: Ursa Basin**

Ursa Basin (~150 km due south of New Orleans, Louisiana [USA]) lies in ~1000 m of water (Figs. F1, F9). The region is of economic interest because of its prolific oilfields that lie at depths greater than 4,000 meters below seafloor (mbsf). Mahaffie (1994) described the geological character of the Mars oilfield. The Ursa field is in Mississippi Canyon Blocks 855, 897, and 899 and is 11.9 km east of the Mars tension leg platform (TLP).

We are interested in the sediments from 0 to 1000 mbsf. Four extraordinary three-dimensional (3-D) seismic data sets are available for the Ursa Basin (Fig. F9). Shell and industry partners shot the Ursa exploration survey for exploration purposes. The high-resolution surveys were shot by Shell for shallow hazards analysis.

Winker and Booth (2000) described deposition of Pleistocene and Holocene sediments in the Ursa region. The Mississippi Canyon Blue Unit is a late Pleistocene, sand-dominated, “ponded fan” that was deposited in a broad topographic low that extended in an east-west direction for as much as 200 km and a north-south direction for as much as 100 km. The Blue Unit is overlain by a leveed-channel assemblage that was mud dominated and had dramatic along-strike variation in thickness. Pulham (1993) described a similar facies assemblage for this region.

Seismic Line A–A’ (Fig. F10) illustrates the proposed boreholes. The sedimentary section is composed of a 300 m thick overburden that is predominantly mudstone. Beneath the overburden lies the first significant sand: the Blue Unit. The Blue Unit has a relatively flat base. Its upper boundary has relief, which most likely reflects post-

depositional erosion. The Blue Unit is composed of interbedded sand and mudstone (Figs. F10, F11). A leveed-channel facies overlies the Blue Unit: it has a sand-cored channel that is flanked by mud-prone levee deposits. A mudstone package that thickens to the west overlies this sand assemblage. This mudstone package has numerous detachment surfaces that record slumping. The overlying mudstone is the eastern margin of a larger levee channel system formed to the west.

Shell made downhole pressure measurements with a pore-pressure penetrometer (piezoprobe) at the Ursa platform (Eaton, 1999; Ostermeier et al., 2000; Pelletier et al., 1999) (Fig. F11). They also acquired whole-core samples and performed consolidation experiments to evaluate preconsolidation stress and estimated overpressure. Piezoprobe measurements (circles) and maximum past effective stresses interpreted from consolidation experiments (triangles) indicate that (1) overpressure begins near the seafloor and (2) the pore pressure is ~50% of the way between the hydrostatic ( $P_h$ ) and the lithostatic ( $\alpha$ ) (Fig. F11).

## SCIENTIFIC OBJECTIVES

We list six specific scientific objectives of Expedition 308.

### *1. Document how pressure, stress, and geology couple to control fluid migration on passive margins.*

We hypothesize that flow-focusing is present at Ursa (Fig. F3). This results in a characteristic spatial distribution of fluid pressure and rock properties (e.g., consolidation, permeability, and shear strength) in the mudstone overlying the Blue Unit. By measuring fluid pressure, logging, and coring in the mudstone above the Blue Unit, we will establish the vertical and lateral variation in pressure and rock properties above the Blue Unit. This will provide a first-order test of the flow-focusing model and will image the flow system within the shale bounding the permeable sand unit.

### *2. Establish reference properties at Brazos-Trinity.*

A critical goal of the research is to establish a reference log and core properties where overpressure is not present at a range of effective stresses. These data will serve as a baseline against which the properties measured at Ursa can be compared, allowing us to establish the deviation in sediment and fluid properties caused by flow-focusing, fluid overpressure, and low effective stress.

*3. Illuminate the controls on slope stability.*

Massive paleolandslides are present at Ursa. Determination of pore pressure, rock properties, and overburden stress will allow prediction of the potential for slope failure in the present and will allow estimation of the conditions that drove previous slope failures. The measured geotechnical properties are critical inputs of numerical models used to estimate what drives slope failure and when slope failure occurs.

*4. Understand timing of sedimentation and slumping.*

A growing issue of contention is just how rapid the sedimentation rate was in the Ursa Basin, what the age of slumping was, and how this ties to the sea level cycle. A successful drilling campaign integrated with existing well and seismic data will allow these issues to be evaluated with complete data sets.

*5. Establish geotechnical and petrophysical properties of shallow sediments.*

We desire to understand the state and evolution of geotechnical and petrophysical properties of mudstone at effective stresses encountered from the seafloor to 600 mbsf. We will derive a complete logging suite, in situ measurements of permeability and pressure, and core samples, which will allow us to understand the compaction process near the seafloor. These data will provide unparalleled insight into mudstone permeability. Permeability, compressibility, and sedimentation rate are the key parameters to understand the generation of overpressures. This study will illuminate how permeability of fine-grained mudstones evolves through time and changes in effective stress.

*6. Provide extraordinary data set to observe ponded and channelized turbidite systems.*

Brazos-Trinity and Ursa are foci of study for turbidite depositional systems.

IODP Expedition 308 is an abbreviated form of Proposal 589-Full3 entitled "Overpressure and Fluid Flow Processes in the Deepwater Gulf of Mexico: Slope Stability, Seeps, and Shallow Water Flow." The abbreviated program was originally described in addendum 589-Add, submitted to IODP on 22 October 2004. Two components of 589-Full3 will not be accomplished: (1) measurement of in situ pressure within the Blue Unit and (2) long-term monitoring of pressure using CORKS in the mudstone above the Blue Unit and in the Blue Unit. Subsequent to submission of 589-Add, the number



of operational days was reduced to 21 from the 30 days envisioned in the addendum. As a result, double-coring at each site will not be possible and there will be only limited wireline logging.

## **DRILLING STRATEGY**

We will complete two primary sites in the Brazos-Trinity Basin (proposed Sites BT4-2A and BT4-4A) and three primary sites at Ursa (proposed Sites URS-1B, URS-2C, and URS-3C) (Table **T1**). The overall strategy is to complete continuous coring, wireline logging, in situ measurements, and measurement-while-drilling (MWD) operations at each primary site (Tables **T2**, **T3**, **T4**). Operations will begin with advanced piston corer (APC) coring and in situ measurements at Site BT4-4A followed by APC coring and in situ measurement at Site BT4-2A. We will then complete MWD operations at Sites BT4-2A, BT4-4A, URS-3C, URS-2C, and URS-1B, respectively. MWD operations at the Ursa sites will include pressure while drilling (PWD) to determine the annulus pressure in the boreholes. Drilling operations will be completed with APC coring and in situ measurements at Sites URS-1B, URS-2C, and URS-3C, respectively. Upon completion of operations, all holes will be filled with heavy mud prior to abandonment. When moving between the proposed BT4 sites, the ship will move in dynamic positioning (DP) mode. DP mode will also be used to move between the proposed URS sites. Detailed operational times are provided in Table **T5**.

We expect problems with hole stability at Brazos-Trinity Basin #4, where we are drilling interbedded turbidite sands and hemipelagic mudstone. In these locations it is critical to have a full logging suite, and we will run both MWD and wireline logs. Hole stability may also be a problem at Ursa when drilling overpressured levee channel sands (interbedded sands and shales above the Blue Unit). To minimize risks of flow into the borehole, heavy mud will be used to drill and core portions of Sites URS-1B and URS-2C. The heavy mud will maintain the borehole pressure. The operational plan will include decision points and contingency plans detailing procedures to be followed in the event that unexpected hole conditions are encountered.

## **PROPOSED DRILL SITES**

### **Primary Sites**

#### ***Site BT4-2A***

Primary proposed Site BT4-2A is located in the center of the Brazos-Trinity Basin #4 (Fig. F7). The site has 155 m of basinal turbidites underlain by 110 m of hemipelagic drape. Hole A will be drilled and cored to 340 mbsf with APC drilling with drillover. Extended core barrel (XCB) coring will be used if APC refusal is reached before 340 mbsf. Hole A will include three APC temperature (APCT) and one Davis-Villinger Temperature-Pressure Probe (DVTPP) temperature measurements and two temperature/dual pressure probe (T2P) deployments and will be the wireline logging/vertical seismic profile (VSP) hole. Hole A will be filled with heavy mud after operations. Site BT4-2A Hole B will be the dedicated MWD hole. Hole B will be offset 20 m from Hole A.

#### ***Site BT4-4A***

Primary proposed Site BT4-4A is near the southern termination of Brazos-Trinity Basin #4 (Fig. F7). The site has a thin veneer of basin fill sediments (23 m) that is underlain by 128 m of hemipelagic mudstone. Site BT4-4A Hole A will be drilled and cored to 230 mbsf. APC drilling with drillover to refusal will be used. XCB coring will be used if APC operations do not reach 230 mbsf. Hole A will include three APCT and one DVTPP temperature measurements and two T2P deployments and will be used for wireline logging and VSP if time is available. Heavy mud will be used to fill Hole A. Hole B, the dedicated MWD hole, will be offset 20 m from Hole A.

#### ***Site URS-1B***

Primary proposed Site URS-1B has the shallowest water depth (1057 m water depth) and the deepest penetration (612 mbsf) (Fig. F10). The anticipated lithology is hemipelagic mud. Interbedded levee sands may be encountered below 481 mbsf. A total depth of 612 mbsf completes drilling and operations 20 m above the top of the Blue Unit (632 mbsf). Hole A will be used for MWD measurements to include PWD (safety panel requirement). Hole B will be the drilling and coring hole, completed with APC drilling with drillover; XCB will be used if APC refusal occurs above 612 mbsf. Three APCT and one DVTPP temperature measurements will be made in the hole. Heavy mud will be used for coring from 481 to 612 mbsf to minimize risk of flow from levee sands. Wireline logging and VSP will be completed in Hole B. Site URS-1B Hole C will

be used for five T2P deployments. APC half-cores will be collected before each T2P deployment. No additional coring is planned for Hole C. The hole will be filled with heavy mud. The offset between the holes will be about 20 m in a direction away from any channel fill.

### ***Site URS-2C***

The hemipelagic mudstones and levee sands at primary proposed Site URS-2C are 378 m thick above the Blue Unit (Fig. F10). We will drill to 358 mbsf, 20 m above the Blue Unit. Hole A will be used for MWD measurements including PWD (safety panel requirement). Hole B will be cored with APC drilling with drillover; XCB will be used if APC refusal occurs above 358 mbsf. Three APCT and one DVTPP temperature measurements will be made in the hole. Heavy mud will be used for coring from 328 to 358 mbsf to minimize the risk of sand flow from the levee sands. Wireline logging and VSP will be completed in Hole B if time is available. Site URS-1B Hole C will be used for five T2P deployments. APC half-cores will be collected immediately before each T2P deployment. No other coring is planned for Hole C. The offset between the holes will be about 20 m in a direction away from any channels.

### ***Site URS-3C***

Primary proposed Site URS-3C is located where the hemipelagic mud is thin (258 m) (Fig. F10). The drilling plan will penetrate to 238 mbsf to prevent any communication with the Blue Unit. Hole A will be used for MWD measurements. We will core Hole B with APC drilling with drillover; XCB will be used if APC refusal occurs above 238 mbsf. Three APCT and one DVTPP temperature measurements will be made in the hole. One deployment of the T2P will be made in Hole B. At 238 mbsf, the hole will be filled with heavy mud. The offset between the holes will be about 20 m. No wireline logging is planned at Site URS-3C.

## **Alternate Sites**

### ***Site BT4-1B***

Alternate proposed Site BT4-1B is on the northern flank of the Brazos-Trinity Basin #4 where basin-filling turbidites overlie hemipelagic mudstone (Fig. F7). A drilling depth of 300 mbsf is proposed for this site in 1405 m of water. Hole B will be for MWD operations. Hole A will employ APC drilling with drillover and will include three APCT and one DVTPP temperature measurements. Two T2P deployments will occur in Hole B. Hole A and Hole B will be offset by 20 m.

### **Site BT4-3A**

Alternate proposed Site BT4-3A is located on the southern flank of the Brazos-Trinity Basin #4 (Fig. F7) within a thin section of basin turbidites (87 m) that is underlain by a thicker section of hemipelagic mud (115 m). The site will be drilled through the hemipelagic drape to 280 mbsf. Hole B will be for MWD operations. Hole A will employ APC drilling with drillover and include three APCT and one DVTPP temperature measurements. Two T2P deployments are planned for Hole B. Hole A and Hole B will be offset by 20 m.

### **Site URS-4A**

Alternate proposed Site URS-4A is similar to Site URS-3C with thin hemipelagic mudstone (257 m) above the Blue Unit, and overpressures are expected (Fig. F10). Drilling, coring, logging, and measurement operations are identical to those designed for Site URS-3C with a shift in total depth to 237 mbsf to allow 20 m between the base of the hole and the top of the Blue Unit (257 mbsf).

## **LOGGING AND DOWNHOLE MEASUREMENTS PLAN**

The main objectives of the downhole measurements program will be to assess how pressure, stress, and geology control fluid migration on a passive margin; establish reference geotechnical and petrophysical properties at a site where overpressures are not present as well as in an overpressure zone; learn about factors controlling slope stability; determine major depositional events and timing of landslides; and provide information about turbiditic processes that occur along the continental slope. In addition, the downhole measurements plan will attempt to define structural and lithologic boundaries as a function of depth, establish site-to-site correlations to seismic and lateral lithostratigraphic variations, produce direct correlations with discrete laboratory data, and identify potential conduits that may serve as pathways for fluid migration. Finally, downhole measurements will complement core measurements by filling gaps in downhole stratigraphy, determining the thickness of lithological units in intervals where poor core recovery is prevalent, and provide the means for potential correlation with the extensive seismic data grid that is available over these areas. Both MWD and wireline logging tool deployments will be used to obtain the downhole measurements proposed for this expedition; the operational plans are described below.

## Measurement While Drilling

At the conclusion of coring activities at the Brazos-Trinity sites, the operational plan will shift to logging activities with MWD capabilities at the two main sites, BT4-2A and BT4-4A (Table T2). These sites will serve as a reference location for physical and chemical properties. Site BT4-2A is located in the section of greatest overburden thickness above the hemipelagic shales. Site BT4-4A is located along the southern flank of the basin where there is almost no turbidite overburden above the hemipelagic shales. MWD operations will then follow at the three Ursa sites (URS-3C, URS-2C, and URS-1B). At the conclusion of the MWD operations, the tools and the MWD engineer will be offloaded to a transfer boat (Table T5). Overall, MWD data will provide information throughout the drilling depth on physical properties that will be used to test spatial variation in rock properties associated with the flow-focusing model. The MWD tools and measurements will include Resistivity-at-the-Bit GeoVision resistivity (GVR), Azimuthal Density Neutron (ADN), and measurements of pressure (annulus pressure while drilling; APWD). The GVR provides azimuthal resistivity images of the borehole and gamma ray measurements; the ADN provides azimuthal borehole compensated formation density, neutron porosity, and photoelectric factor measurements; and the APWD will provide measurements of annulus pressure for identifying potential shallow flow and overpressure conditions.

## Wireline Logging and Vertical Seismic Profile

A series of three tool string deployments are planned for the Brazos-Trinity and Ursa sites. These tool strings include the triple combination (triple combo), the Formation MicroScanner (FMS)-Dipole Sonic Imager (DSI), and a zero-offset VSP. Detailed descriptions of all wireline tools and applications are provided at [iodp.ldeo.columbia.edu/TOOLS\\_LABS/index.html](http://iodp.ldeo.columbia.edu/TOOLS_LABS/index.html). A detailed time estimate for the wireline logging can be seen in Table T3.

The triple combo with caliper measurements will be used to assess the initial postdrilling borehole conditions such as hole size and postdrilling fluid temperatures. In addition, this tool string will obtain potassium, uranium, and thorium concentrations as well as formation density, photoelectric effect, electrical resistivity, and porosity in situ profiles as a function of depth. The FMS will provide high-resolution borehole images of lithostratigraphic sequences and boundaries, oriented fracture patterns, and information regarding hole stability. The DSI will produce a full set of compressional and shear waveforms, cross-dipole shear wave velocities and amplitudes measured at

different azimuths, and Stoneley waveforms. The zero-offset VSP will provide the shallow sediment velocity gradient information and interval velocity that will be necessary for potential core-log-seismic correlations.

These measurements will be utilized for characterization of stratigraphic sequences; determination of potential geological factors that may influence fluid migration; establishing geotechnical and petrophysical properties at these sites; and providing information about the depositional events, timing of landslides, and turbiditic processes along the continental slope. These types of measurements can be used to determine preferred fracture orientations and fracture densities, paleostress directions, and permeability estimates, all required to accurately model the hydrological characteristics of this passive margin system. The velocity gradient, sonic velocities, and densities could be used for the calculation of synthetic seismogram models and a direct correlation with high-resolution seismic data that have been obtained for these sites.

## **In Situ Measurements**

Pressure, hydraulic conductivity, and temperature will be measured in the mudstones with the T2P designed by the Massachusetts Institute of Technology (MIT; USA), the Pennsylvania State University (USA), and IODP-Texas A&M University (TAMU; USA). These data will help constrain the rock properties and flow field in the sediments. The tapered probe measures pressure and temperature at the narrow tip of the probe; a second pressure measurement is collected slightly up-probe from the sensors at the tip (Fig. F12). The design allows for rapid measurement (~190 min total operational time) (Table T6) of high-quality pressure and temperature in low-permeability sediments. During penetration of the probe (<5 min), we will not circulate. However, during the pressure measurement, circulation is possible.

The T2P delivery and drive assembly interfaces with the drill string and is integrated into the IODP operational protocols. We will use the existing colleted delivery system (CDS) now used to deploy the DVTPP, to deploy the T2P. The drill string is first raised several meters off the bottom of the borehole. The probe is then lowered down the drill string in the extended configuration (stroke = ~3.3 m) and engages the bottom-hole assembly (BHA). The drill string is then lowered to insert the probe into the foundation. Once the force of penetration exceeds the weight of the telescoping section of the CDS, the section retracts with little change in force until it engages the collet. With the section fully retracted, the weight of the drill string is used to force the probe

into the foundation. The CDS has 53 kN (12,000 lb) driving force capacity controlled by a safety mechanism. Following penetration (controlled by lowering the string a specified distance), the drill string is raised 2 m to extend the telescope and decouple the probe from the drill string. This prevents drill string movement (due to ship heave) from disturbing the probe during dissipation.

A second component of in situ measurements is routine temperature measurements at each site. Temperature measurements will be made during APC operations using the APCT tool. We have allocated time to make three APCT measurements and one DVTPP measurement per coring hole (Table T5). Each measurement will take ~15 min.

## **SAMPLING STRATEGY**

Shipboard and shore-based researchers should refer to the interim IODP Sample, Data, and Obligations policy posted on the World Wide Web at [iodp.org/data\\_samples.html](http://iodp.org/data_samples.html). This document outlines the policy for distributing IODP samples and data to research scientists, curators, and educators. The document also defines the obligations that sample and data recipients incur. Access to data and core sampling during Expedition 308, or within the 1 y moratorium, must be approved by the Sample Allocation Committee (SAC). The SAC (composed of Co-Chief Scientists, Staff Scientist, the IODP Curator on shore, and the Curatorial Representative on board ship) will work with the Shipboard Scientific Party to formulate a formal expedition-specific sampling plan for shipboard and postcruise sampling.

Shipboard scientists are expected to submit sample requests 2 months before the beginning of the expedition. Sample requests may be submitted at [iodp.tamu.edu/curation/samples.html](http://iodp.tamu.edu/curation/samples.html). Based on sample requests (shore-based and shipboard), the SAC and Shipboard Scientific Party will prepare a working cruise sampling plan. This plan will be subject to modification depending upon the actual material recovered and collaborations that may evolve between scientists during the expedition. Modifications to the sampling plan during the expedition require the approval of the SAC.

All sample frequencies and sizes must be justified on a scientific basis and will depend on core recovery, the full spectrum of other requests, and the cruise objectives. Some redundancy of measurement is unavoidable, but minimizing the duplication of measurements among the shipboard party and identified shore-based collaborators will be a factor in evaluating sample requests.

## **Cruise-Specific Sampling Needs**

One critical component of Expedition 308 is establishing the in situ fluid pressure, effective stress, and hydrologic properties of the sediments from the seafloor to 1000 mbsf. To accomplish these goals, it is critical that 10–20 cm long whole-round samples be taken at regular intervals and sealed for shore-based geotechnical measurements. In addition to the routine whole rounds, it is mandatory that whole rounds be taken at the depth of each T2P measurement.

The whole-round samples are required to calibrate the in situ measurements, to constrain sediment properties for hydrogeologic models, and to measure the strength of the sediments for stability analyses.



## REFERENCES

- Anderson, R.N., and Fillon, R.H. (Ed.), 2004. Late Quaternary Stratigraphic Evolution of the Northern Gulf of Mexico Margin. *Spec. Publ.—SEPM (Soc. Sediment. Geol.)*, 79.
- Badalini, G., Kneller, B., and Winker, C.D., 2000. Architecture and processes in the late Pleistocene Brazos–Trinity turbidite system, Gulf of Mexico continental slope. *Deep-Water Reservoirs of the World: Proc. GCSSEPM 20th Annu. Res. Conf.*, 16–34.
- Beaubouef, R.T., and Friedmann, S.J., 2000. High resolution seismic/sequence stratigraphic framework for the evolution of Pleistocene intra slope basins, western Gulf of Mexico: depositional models and reservoir analogs. *Deep-Water Reservoirs of the World: Proc. GCSSEPM 20th Annu. Res. Conf.*, 40–60.
- Bethke, C.M., 1986. Inverse hydrologic analysis of the distribution and origin of Gulf Coast-type geopressured zones. *J. Geophys. Res.*, 91(B6):6535–6545.
- Boehm, A., and Moore, J.C., 2002. Fluidized sandstone intrusions as an indicator of paleo-stress orientation, Santa Cruz, California. *Geofluids*, 2(2):147–161.
- Bredehoeft, J.D., and Hanshaw, B.B., 1968. On the maintenance of anomalous fluid pressures: 1. Thick sedimentary sequences. *Geol. Soc. Am. Bull.*, 79:1097–1106.
- Bryant, W.R., Bryant, J.R., Feeley, M.H., and Simmons, G.R., 1990. Physiographic and bathymetric characteristics of the continental slope, northwest Gulf of Mexico. *Geo-Mar. Lett.*, 10:182–199.
- Davies, R., Bell, B.R., Cartwright, J.A., and Shoulders, S., 2002. Three-dimensional seismic imaging of Paleogene dike-fed submarine volcanoes from the northeast Atlantic margin. *Geology*, 30:223–226.
- Dugan, B., and Flemings, P.B., 2000. Overpressure and fluid flow in the New Jersey continental slope: implications for slope failure and cold seeps. *Science*, 289:288–291.
- Eaton, L.F., 1999. Drilling through deepwater shallow water flow zones at Ursa. *Proc.—SPE/IADC Middle East Drill. Conf.*, 153–164.
- Fertl, W.H., 1976. *Abnormal Formation Pressures: Implications to Exploration, Drilling, and Production of Oil and Gas Resources*: Amsterdam (Elsevier).
- Flemings, P.B., Stump, B.B., Finkbeiner, T., and Zoback, M., 2002. Flow focusing in overpressured sandstones: theory, observations, and applications. *Am. J. Sci.*, 302:827–855.
- Fratlicelli, C.M., 2003. Linking climate, sea level, and sedimentary response on the Texas shelf and upper slope: examples from the Brazos and Colorado fluvial-deltaic system [Ph.D. dissert.]. Rice Univ., Houston, TX.
- Gibson, R.E., 1958. The progress of consolidation in a clay layer increasing in thickness with time. *Geotechnique*, 8:171–182.
- Koppula, S.D., and Morgenstern, N.R., 1982. On the consolidation of sedimenting clays. *Can. Geotech. J.*, 19:260–268.
- Mahaffie, M.J., 1994. Reservoir classification for turbidite intervals at the Mars discovery, Mississippi Canyon Block 807, Gulf of Mexico. In Bouma, A.H., and Perkins, B.G. (Eds.), *Submarine Fans and Turbidite Systems: Proc. GCSSEPM 15th Annu. Res. Conf.*, 233–244.
- Morton, R.A., and Suter, R.J., 1996. Sequence stratigraphy and composition of late Quaternary shelf-margin deltas, northern Gulf of Mexico. *AAPG Bull.*, 80:505–530.
- Osborne, M.J., and Swarbrick, R.E., 1997. Mechanisms for generating overpressures in sedimentary basins: a reevaluation. *AAPG Bull.*, 81:1023–1041.
- Ostermeier, R.M., Pelletier, J.H., Winker, C.D., Nicholson, J.W., Rambow, F.H., and Cowan, K.M., 2000. Dealing with shallow-water flow in the deepwater Gulf of Mexico. *Proc. Offshore Tech. Conf.*, 32(1):75–86.

- Pelletier, J.H., Ostermeier, R.M., Winker, C.D., Nicholson, J.W., and Rambow, F.H., 1999. Shallow water flow sands in the deepwater Gulf of Mexico: some recent Shell experience [International Forum on Shallow Water Flows, League City, TX, 6–8 Oct., 1999].
- Pratson, L.F., and Ryan, W.B.F., 1994. Pliocene to Recent infilling and subsidence of intraslope basins offshore Louisiana. *AAPG Bull.*, 78:1483–1506.
- Pulham, A.J., 1993. Variations in slope deposition, Pliocene–Pleistocene, offshore Louisiana, northeast Gulf of Mexico. In Posamentier, H., and Weimer, P. (Eds.), *Siliclastic Sequence Stratigraphy: Recent Developments and Applications*. AAPG Mem., 58:199–233.
- Rubey, W.W., and Hubbert, M.K., 1959. Role of fluid pressure in mechanics of overthrust faulting, Part 2. Overthrust belt in geosynclinal area of western Wyoming in light of fluid-pressure hypothesis. *Geol. Soc. Am. Bull.*, 70:167–205.
- Satterfield, W.M., and Behrens, E.W., 1990. A late Quaternary canyon channel system, northwest Gulf of Mexico continental slope. *Mar. Geol.*, 92:51–67.
- Seldon, B.J., and Flemings, P.B., 2005. Reservoir pressure and sea floor venting: predicting trap integrity in a Gulf of Mexico deepwater turbidite minibasin. *AAPG Bull.*
- Suter, J.R., and Berryhill, H.L., Jr., 1985. Late Quaternary shelf-margin deltas, northwest Gulf of Mexico. *AAPG Bull.*, 69:77–91.
- Swarbrick, R.E., and Osborne, M.J., 1996. The nature and diversity of pressure transition zones. *Pet. Geosci.*, 2:111–115.
- Winker, C.D., 1996. High-resolution seismic stratigraphy of a late Pleistocene submarine fan ponded by salt-withdrawal minibasins on the Gulf of Mexico continental slope. *Proc.—Annu. Offshore Technol. Conf.*, 28(1):619–628.
- Winker, C.D., and Booth, J.R., 2000. Sedimentary dynamics of the salt-dominated continental slope, Gulf of Mexico: integration of observations from the seafloor, near-surface, and deep subsurface. *Deep-Water Reservoirs of the World: Proc. GCSSEPM 20th Annu. Res. Conf.*, 1059–1086.
- Worrall, D.M., and Snelson, S., 1989. Evolution of the northern Gulf of Mexico, with emphasis on Cenozoic growth faulting and the role of salt. In Bally, A.W., and Pater, A.R. (Eds.), *The Geology of North America—An Overview* (Vol. A): Boulder, CO (Geol. Soc. Am.), 97–137.

Expedition 308 Scientific Prospectus

**Table T1.** Site locations for IODP Expedition 308, Gulf of Mexico hydrogeology.

Site	Latitude, longitude	UTM X (zone)	UTM Y (zone)	Seismic lines	Shotpoint	Water depth (m)
BT4-1B	27.36771232°N, 94.35774732°W	1199872.75 (15)	9933466.00 (15)	Rudder 2-D dip 3020; Rudder 2-D cross 3019	284.00	1405
BT4-2A	27.30136298°N, 94.38753682°W	1189937.75 (15)	9909458.00 (15)	Rudder 2-D dip 3020; Rudder 2-D cross 3045	220.76	1476
BT4-3A	27.27568317°N, 94.39891740°W	1186138.00 (15)	9900166.00 (15)	Rudder 2-D dip 3020; Rudder 2-D cross 3055	196.36	1459
BT4-4A	27.26628028°N, 94.40315809°W	1184722.38 (15)	9896764.00 (15)	Rudder 2-D dip 3020	187.27	1435
URS-1B	28.07974007°N, 89.13930517°W	950725.60 (16)	10195883.60 (16)	Morgus HR Line 150; Morgus HR Trace 1100		1057
URS-2C	28.09124346°N, 89.07252124°W	972332.69 (16)	10199693.00 (16)	Morgus HR Line 150; Morgus HR Trace 2170		1262
URS-3C	28.09937740°N, 89.02520153°W	987639.20 (16)	10202393.10 (16)	Morgus HR Line 150; Morgus HR Trace 2928		1321
URS-4A	28.10025610°N; 89.02008217°W	989295.00 (16)	10202685.10 (16)	Morgus HR Line 150; Morgus HR Trace 3010		1325

Notes: UTM = universal transverse Mercator. Conversion to/from UTM and latitude/longitude use NAD27 and Clarke 1866 ellipsoid. UTM coordinates are in U.S. survey feet.

**Table T2.** Stage 1 measurement-while-drilling operations summary for primary sites.

Proposed site	Water depth (m)	MWD depth (mbsf)	Operational time (days)	Total time (days)
BT4-2A	1476	340	1.2	1.2
BT4-4A	1435	230	1.0	1.0
Transit 2				2.0
URS-3C	1321	238	1.0	1.0
URS-2C	1262	358	1.2	1.2
URS-1B	1057	612	1.9	1.9
			Total:	8.3

Notes: MWD = measurement while drilling. The time estimates include rig-up through rig-down and stow.

Expedition 308 Scientific Prospectus

**Table T3.** Wireline logging measurements and time estimates.

Site*	Water depth (m)	Logged interval (m)	Measurements	Time (h) <sup>†</sup>
BT4-2A	1476	260	Temperature; caliper; spectral gamma ray; electrical resistivity; density; photoelectric effect; porosity; compressional-, shear-, and stoneley-wave velocities; borehole resistivity imaging; and vertical seismic profile	22.8
BT4-4A	1435	150	Same as Site BT4-2A.	19.8
URS-1B	1057	532	Same as Site BT4-2A	26.2
URS-2C	1262	278	Same as Site BT4-2A	21.3

Notes: \* = Prioritization of sites for wireline logging operations may depend on overall expedition time constraints. † = Time estimates assume setting drill pipe at 80 mbsf, 20 m station spacing for vertical seismic profile, and compliance with the IODP marine mammal guidelines.

**Table T4.** Depth to critical surfaces at each Expedition 308 site.

Proposed site	Water depth		Drilled depth		Top hemipelagic depth		Bottom hemipelagic depth	
	(m)	TWT (ms)	(mbsf)	TWT (ms)	(mbsf)	TWT (ms)	(mbsf)	TWT (ms)
BT4-1B	1405	1.907	300	2.264	118	2.051	310	2.276
BT4-2A	1476	1.972	340	2.374	185	2.196	434	2.476
BT4-3A	1459	1.949	280	2.284	101	2.072	338	2.350
BT4-4A	1435	1.918	230	2.195	37	1.962	275	2.247
					Top Blue		Base Blue	
URS-1B	1057	1.419	612	2.122	632	2.168	722	2.264
URS-2C	1262	1.695	300	2.071	358	2.161	558	2.363
URS-3C	1321	1.773	240	2.079	238	2.101	483	2.359
URS-4A	1325	1.780	240	2.085	237	2.106	474	2.355

Note: TWT = two-way traveltime.

Expedition 308 Scientific Prospectus

Table T5. Operations plan and time estimate.

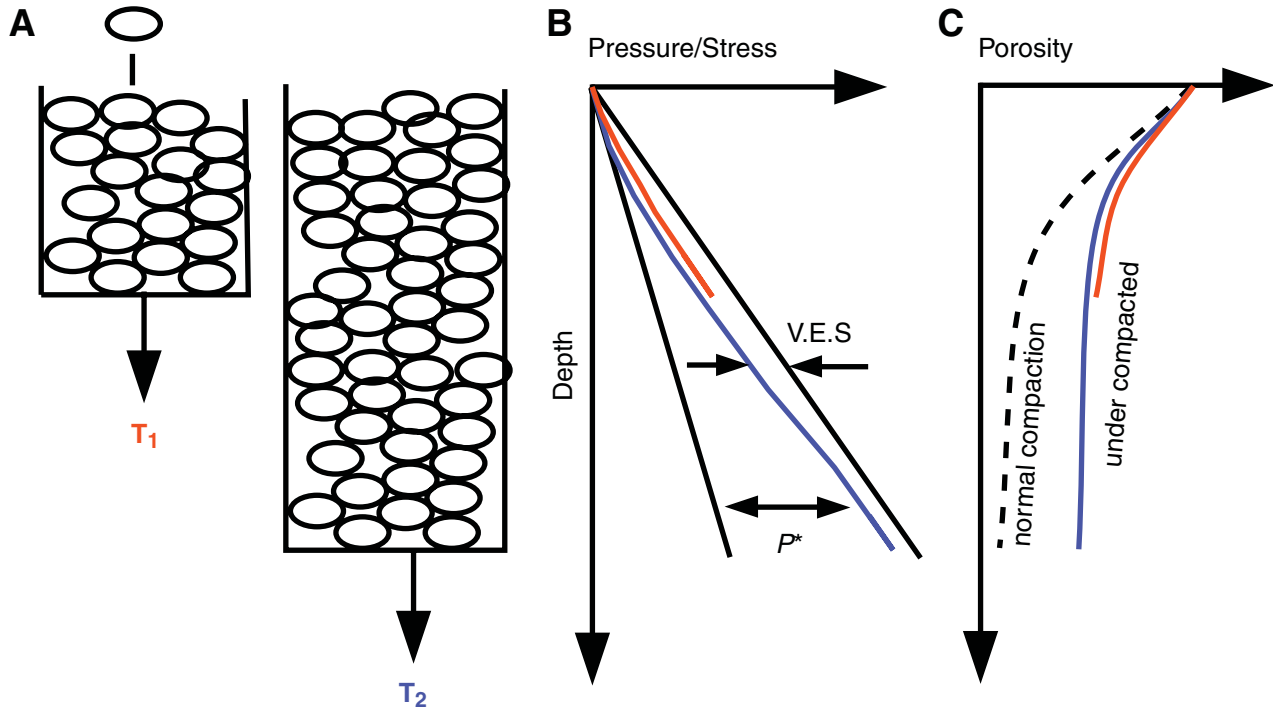
Primary site	Location (lat/long)	Water depth (mbrf)	Operations description (mbsf)	Transit (days)	Drilling (days)	Logging (days)
Mobile, Alabama			Transit 448 nmi at 10.5 kt to Site BT4-4A	1.8		
BT4-4A	27.26628°N, 94.40316°W	1435	<b>Hole A:</b> APC/XCB core to 230 mbsf; fill hole with heavy mud (includes 3 APCT and 1 DVTPP measurements, plus 2 T2P deployments).  Normal Pressure Brazos-Trinity Basin flank E. Breaks Blk. 735		1.6	
			Move 2.5 nmi at 1.5 kt in DP mode to Site BT4-2A	0.1		
BT4-2A	27.30136°N, 94.38754°W	1476	<b>Hole A:</b> APC/XCB core to 340 mbsf; fill hole with heavy mud (includes 3 APCT and 1 DVTPP measurements, plus 2 T2P deployments).  Wireline logging (including hole preparation): - Triple combo/FMS-sonic/VSP (20 m stations/5 min per station) <b>Hole B:</b> MWD at 25 m/h ROP to 340 mbsf; fill hole with heavy mud.		1.8	1.5
			Move 2.5 nmi at 1.5 kt in DP mode to Site BT4-4A	0.1		
BT4-4A	27.26628°N, 94.40316°W	1435	<b>Hole B:</b> MWD at 25 m/h ROP to 230 mbsf; fill hole with heavy mud.			0.9
			Transit 283 nmi at 10.5 kt to Site URS-3C	1.1		
URS-3C	28.09938°N, 89.02520°W	1321	<b>Hole A:</b> MWD at 25 m/h ROP to 238 mbsf; fill hole with heavy mud. Top of "Blue" sand projected at 258 mbsf			0.9
			Move 3.4 nmi at 1.5 kt in DP mode to Site URS-2C	0.1		
URS-2C	28.09124°N, 89.07252°W	1262	<b>Hole A:</b> MWD at 25 m/h ROP to 358 mbsf; fill hole with heavy mud. Top of "Blue" sand projected at 378 mbsf			1.1
			Move 3.4 nmi at 1.5 kt in DP mode to Site URS-1B	0.1		
URS-1B	28.07974°N, 89.13931°W	1057	<b>Hole A:</b> MWD at 25 m/h ROP to 612 mbsf; fill hole with heavy mud. Top of "Blue" sand projected at 632 mbsf			1.1
			Rendezvous with work boat to offload MWD tools	0.1		
Abnormal Pressure Mars-Ursa Basin Miss.Canyon Blk. 897			<b>Hole B:</b> APC/XCB core to 612 mbsf; fill hole with heavy mud (includes 3 APCT and 1 DVTPP measurements)  - Wireline logging (including hole preparation): Triple combo/FMS-sonic/VSP (20 m stations/5 min per station) <b>Hole C:</b> Drill; 5 T2P deployments plus allowance for 5 APC half-cores. Fill hole with heavy mud. <i>Note: Core with heavy mud from 481 mbsf to TD (last 130 m).</i> Top of "Blue" sand projected at 632 mbsf		3.2	1.5
			Move 3.4 nmi at 1.5 kt in DP mode to Site URS-2C	0.1		
URS-2C	28.09124°N, 89.07252°W	1262	<b>Hole B:</b> APC/XCB core to 358 mbsf; fill hole with heavy mud (includes 3 APCT and 1 DVTPP measurements)  <b>Hole C:</b> Drill; 5 T2P deployments plus allowance for 5 APC half-cores. Fill hole with heavy mud. <i>Note: Core with heavy mud from 328 mbsf to TD (last 30 m).</i> Top of "Blue" sand projected at 378 mbsf		1.5	1.6
			Move 3.4 nmi at 1.5 kt in DP mode to Site URS-3C	0.1		
URS-3C	28.09938°N, 89.02520°W	1321	<b>Hole B:</b> APC/XCB core to 238 mbsf; fill hole with heavy mud (includes 3 APCT and 1 DVTPP measurements, plus 1 T2P deployment). Top of "Blue" sand projected at 258 mbsf		1.4	
Abnormal Pressure Mars-Ursa Basin Miss.Canyon Blk. 855						
Balboa, Panama			Transit 1374 nmi T 10.5 kt to Balboa, Panama thorough Canal	6.5		
			Subtotal:	10.1	12.8	8.1
			Total operating days:	31.0		

Notes: APC = advanced piston coring, XCB = extended core barrel. APCT = APC temperature tool, DVTPP = Davis-Villinger Temperature-Pressure tool, T2P = temperature/dual pressure tool. FMS = Formation MicroScanner, VSP = vertical seismic profile. MWD = measurement while drilling. ROP = rate of penetration. TD = total depth.

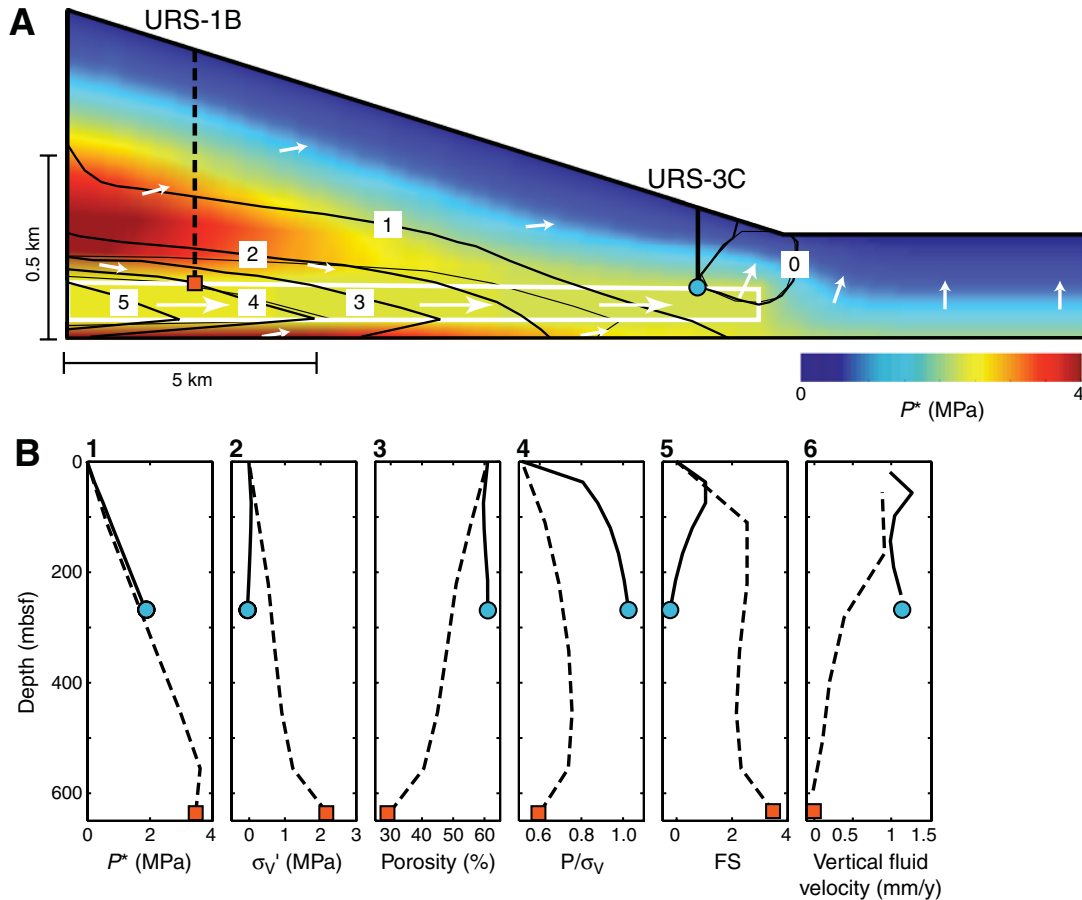
**Table T6.** T2P tapered probe measurement times.

Event	Event time (min)	Cumulative time (min)
Tool in pipe	0	0
Lower tool to 1 m above base of hole	45	45
Take hydrostatic pressure	5	50
Lower tool to base of hole	5	55
Stop pumping	5	60
Push tool into formation	5	65
Start pumping	5	70
Measure pressure	90	160
Pull tool from formation	5	165
Pull tool to top of pipe	25	190

**Figure F1.** A. Overpressure ( $P^*$ ) results when sedimentation occurs more rapidly than fluids can be expelled by compaction. B. This is recorded by an “undercompacted” porosity profile. C. Overpressure is often interpreted from the undercompacted profile. A suite of models describes how overpressure is generated during rapid deposition (Bethke, 1986; Bredehoeft and Hanshaw, 1968; Gibson, 1958; Koppula and Morgenstern, 1982; Osborne and Swarbrick, 1997; Swarbrick and Osborne, 1996).

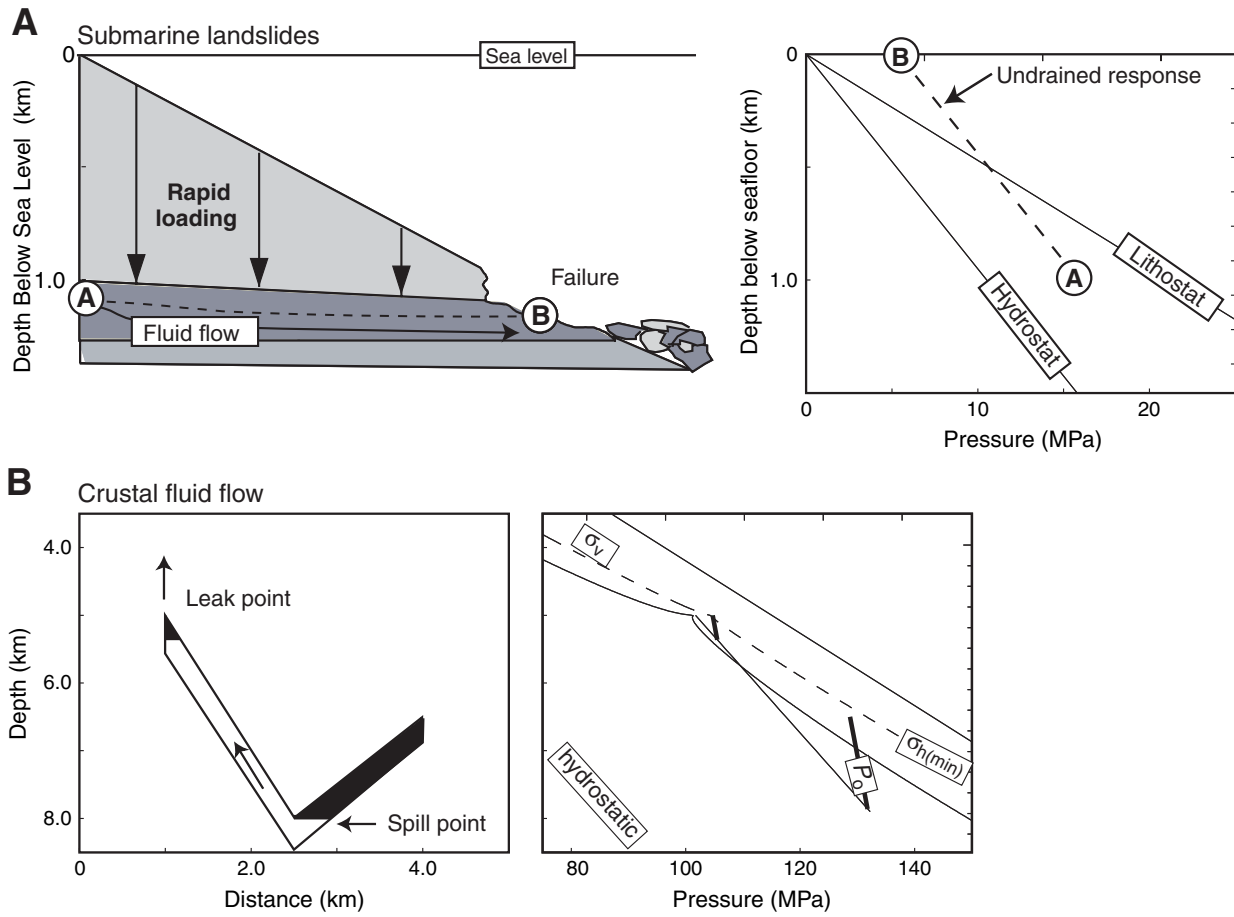


**Figure F2. A.** Low-permeability sediments are rapidly deposited on a high-permeability aquifer (outlined in white). The sedimentation rate decreases from left to right, resulting in the final wedge-shaped geometry. Rapid sedimentation generates overpressures ( $P^*$ , color contours) that are greatest on the left (red). Flow is driven laterally (left to right) along the aquifer and expelled at the toe of the slope where the aquifer ends (white arrows). The vertical effective stress (black contours) is a minimum on the right end of the aquifer. **B.** Model predictions for URS-1B (dashed line in A and B) and URS-3C (solid line in A and B); drilling and measurement will provide direct tests of these predictions. (1) Predicted overpressure profiles where overburden is thick (dashed = URS-1B) and thin (solid = URS-3C). Overpressure at URS-3C is greater at the same depth than overpressures at URS-1B. (2) The effective stress ( $\sigma_v'$ ) is much lower at URS-3C than at URS-1B. (3) Porosities are much higher at URS-3C than URS-1B at equivalent depths. (4) Pore pressures ( $P$ ) equal the overburden stress ( $\sigma_v$ ) at URS-3C. (5) Infinite slope analyses (FS; relates the failure-driving stress to the available shear strength for shallow failures) predict unstable conditions (FS < 1) for URS-3C. (6) Simulated vertical fluid velocity is higher at URS-3C than at URS-1B. At URS-1B we predict upward flow for most of the section but downward flow (velocity < 0) just above the aquifer. Model parameters: low permeability  $k_v < 5 \times 10^{-18} \text{ m}^2$  and  $k_h < 5 \times 10^{-16} \text{ m}^2$ ; aquifer permeability  $k_h = k_v 5 \times 10^{-14} \text{ m}^2$ ; maximum sedimentation rate = 3.5 mm/y; minimum sedimentation rate = 0.8 mm/y.

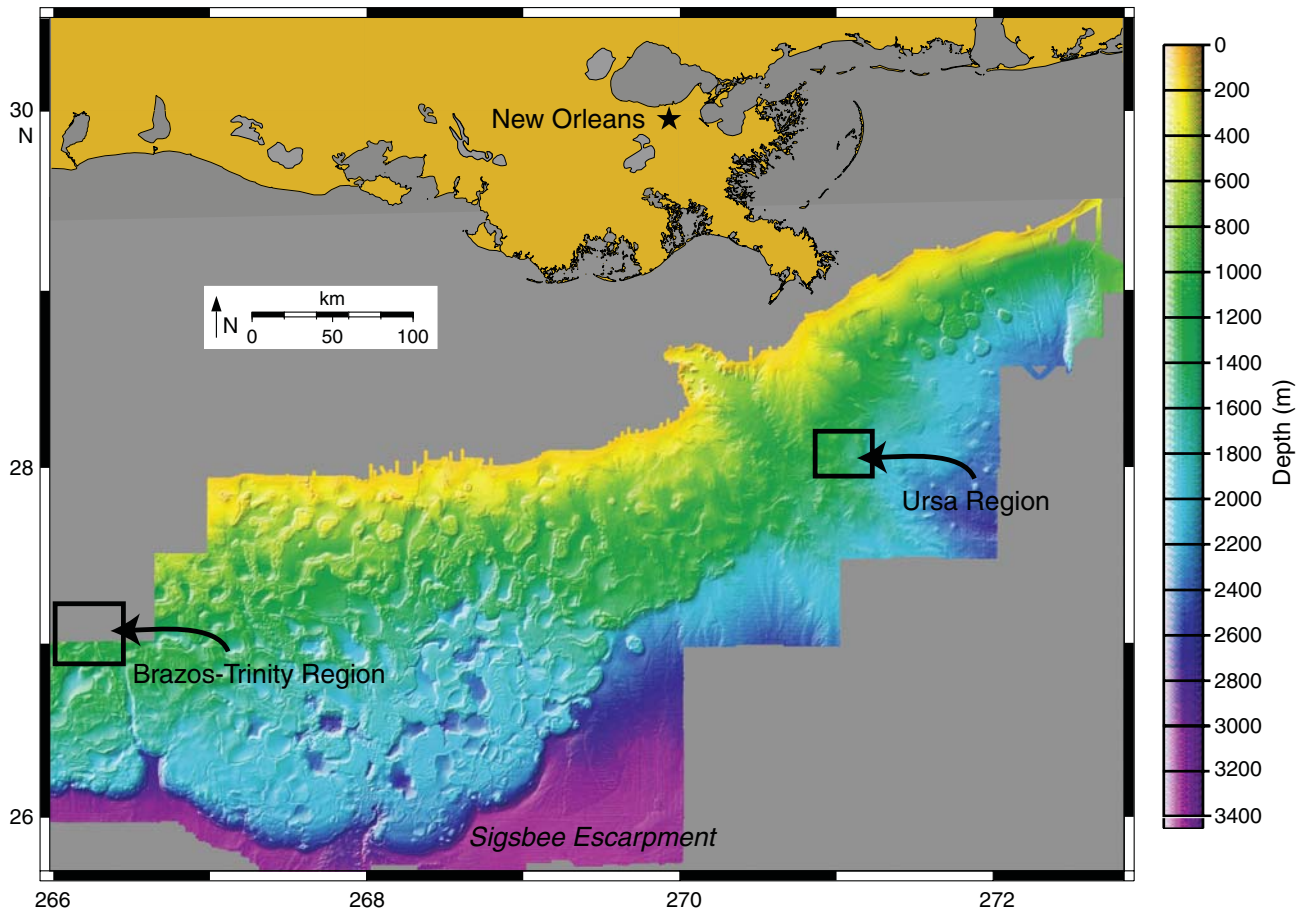




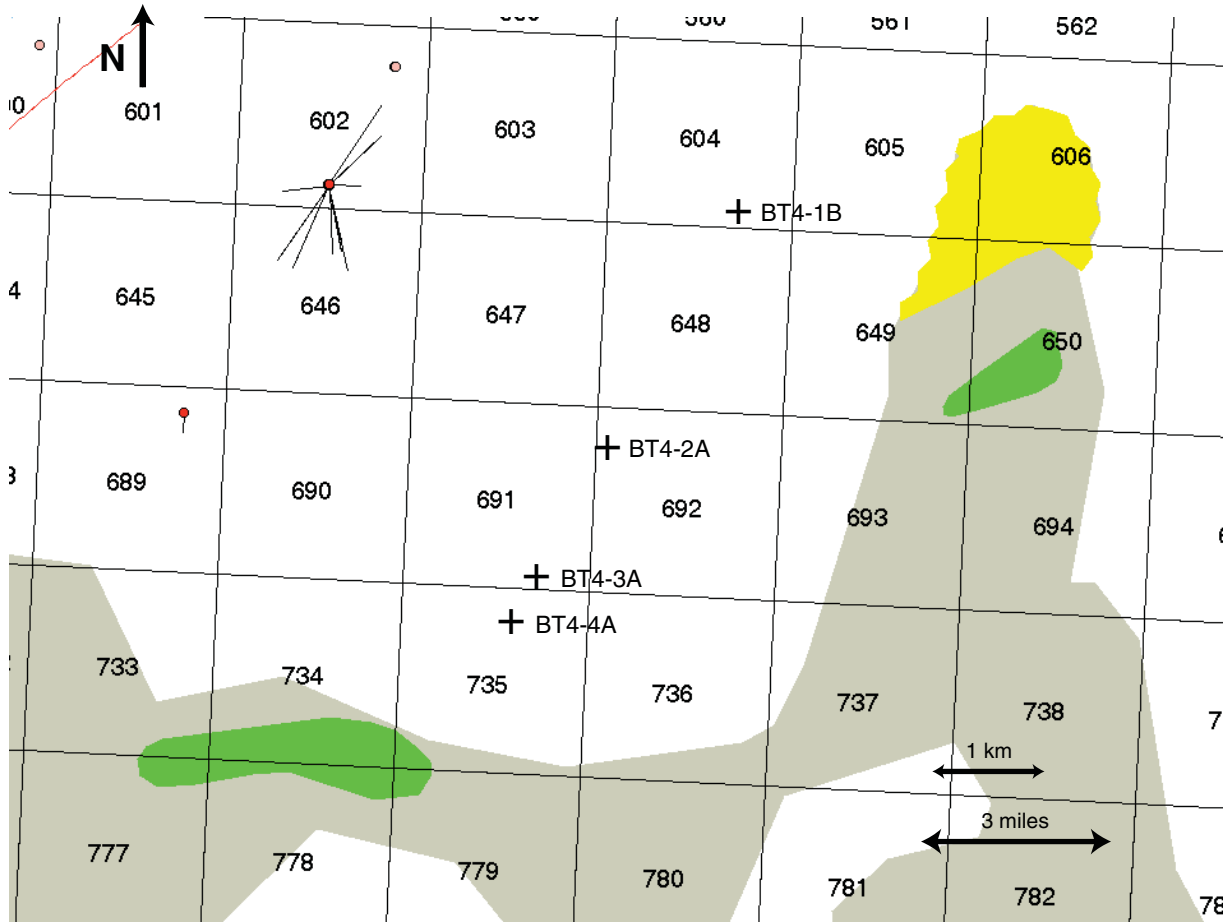
**Figure F3.** Flow focusing drives (A) slope instability and (B) fluid migration.



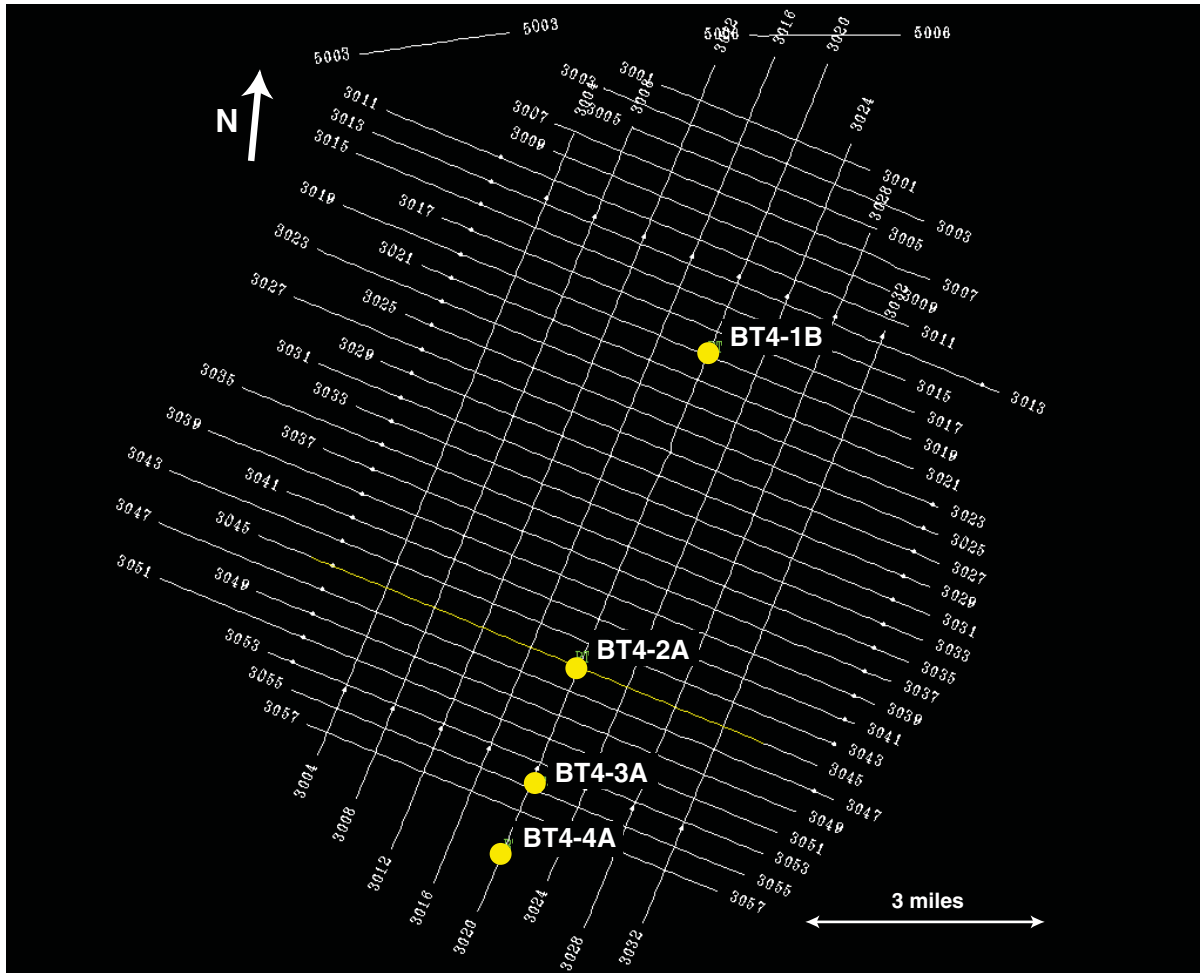
**Figure F4.** Bathymetric image of the continental slope of the Gulf of Mexico. The Brazos-Trinity Basin contains four proposed sites (BT4-1B to BT4-4A) and the Ursa Basin also contains four proposed sites (URS-1B to URS-4A). Pleistocene sedimentation rates are low at the BT4 sites and high at the URS sites.



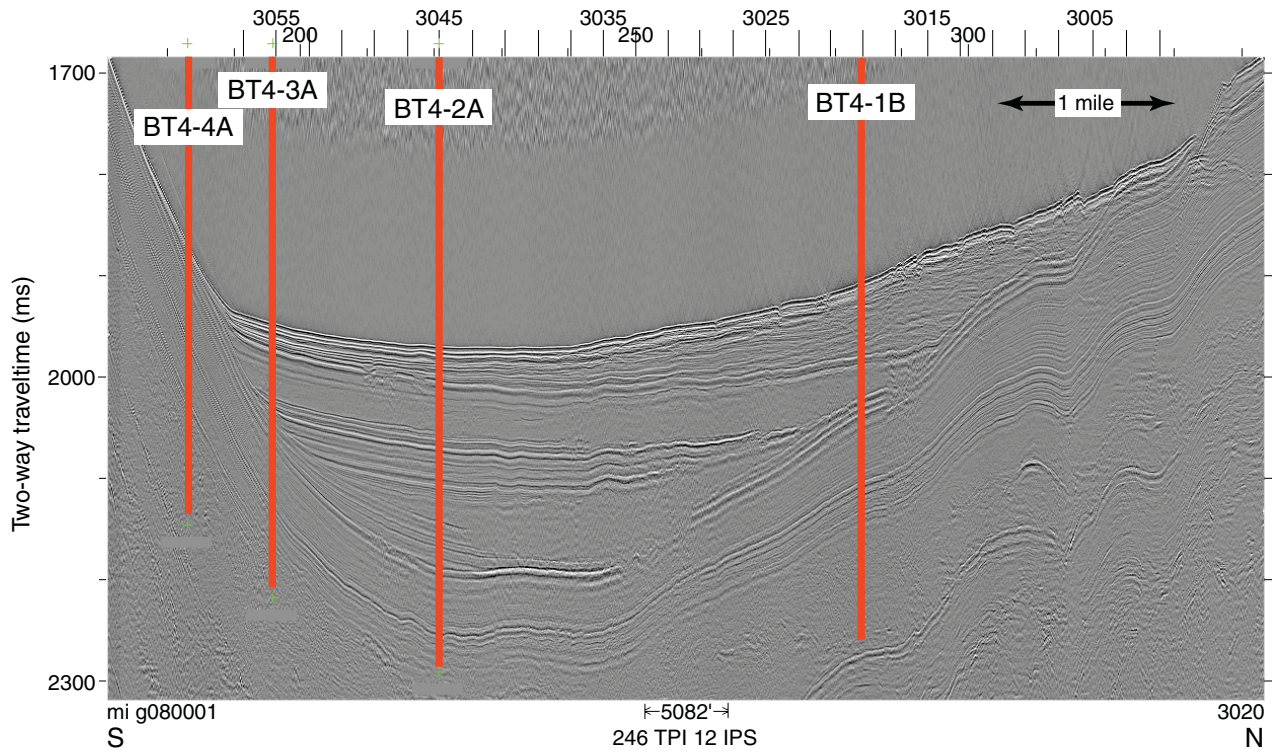
**Figure F5.** Brazos-Trinity Basin #4. Infrastructure (wells and pipelines), salt distribution (green and gray), locations of steep bathymetry (yellow), and East Breaks block numbers are shown.



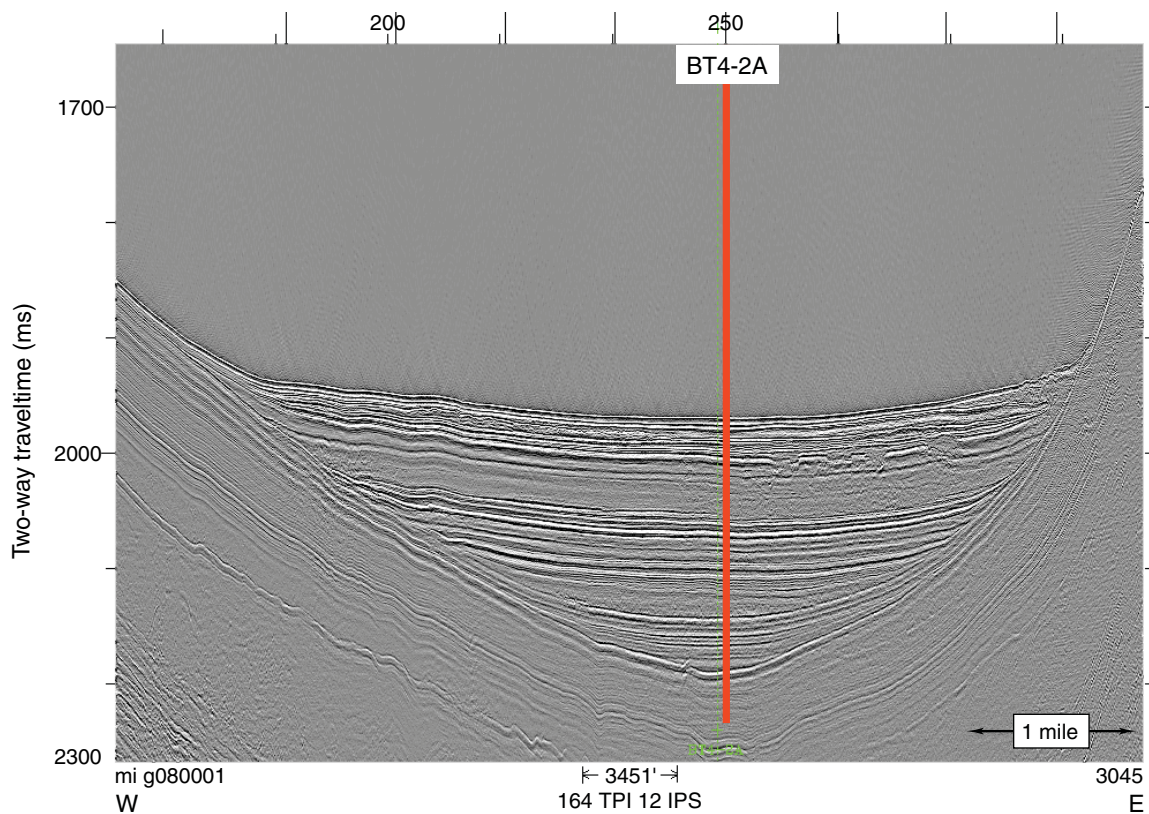
**Figure F6.** Two-dimensional high-resolution seismic data basemap. Proposed Sites BT4-1B to BT4-4A are shown on the map along Line 3020.



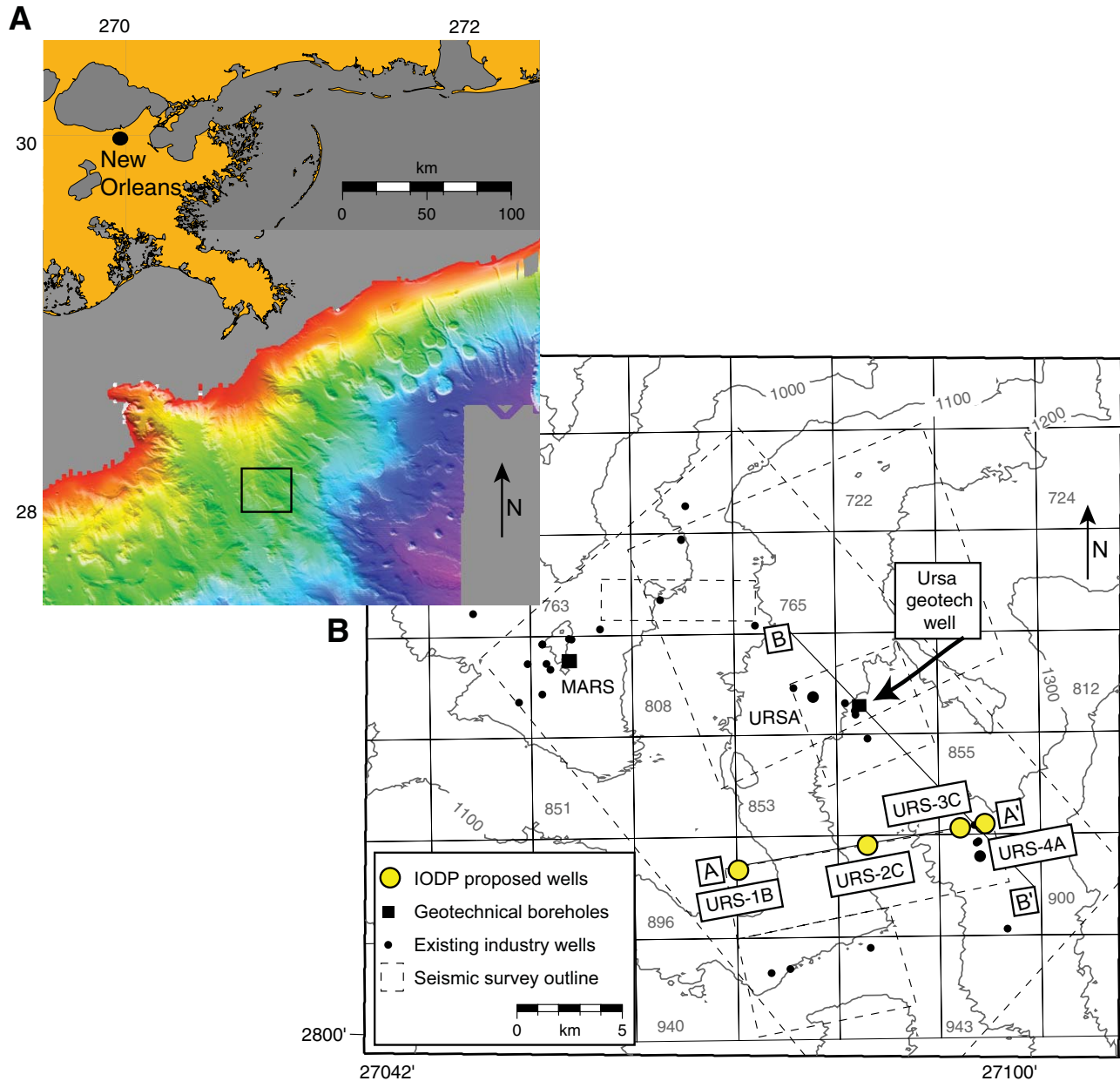
**Figure F7.** Dip seismic section 3020. Specific sites are located at the cross-tie with strike Lines 3019 (BT4-1B), 3045 (BT4-2A), and 3055 (Site BT4-3A) and at the southern limit of Line 3020 (Site BT4-4A). Primary sites for Brazos-Trinity include BT4-2A and BT4-4A. Secondary sites include BT4-1B and BT4-3A. Seismic reproduced with permission of Shell Exploration and Production Company.



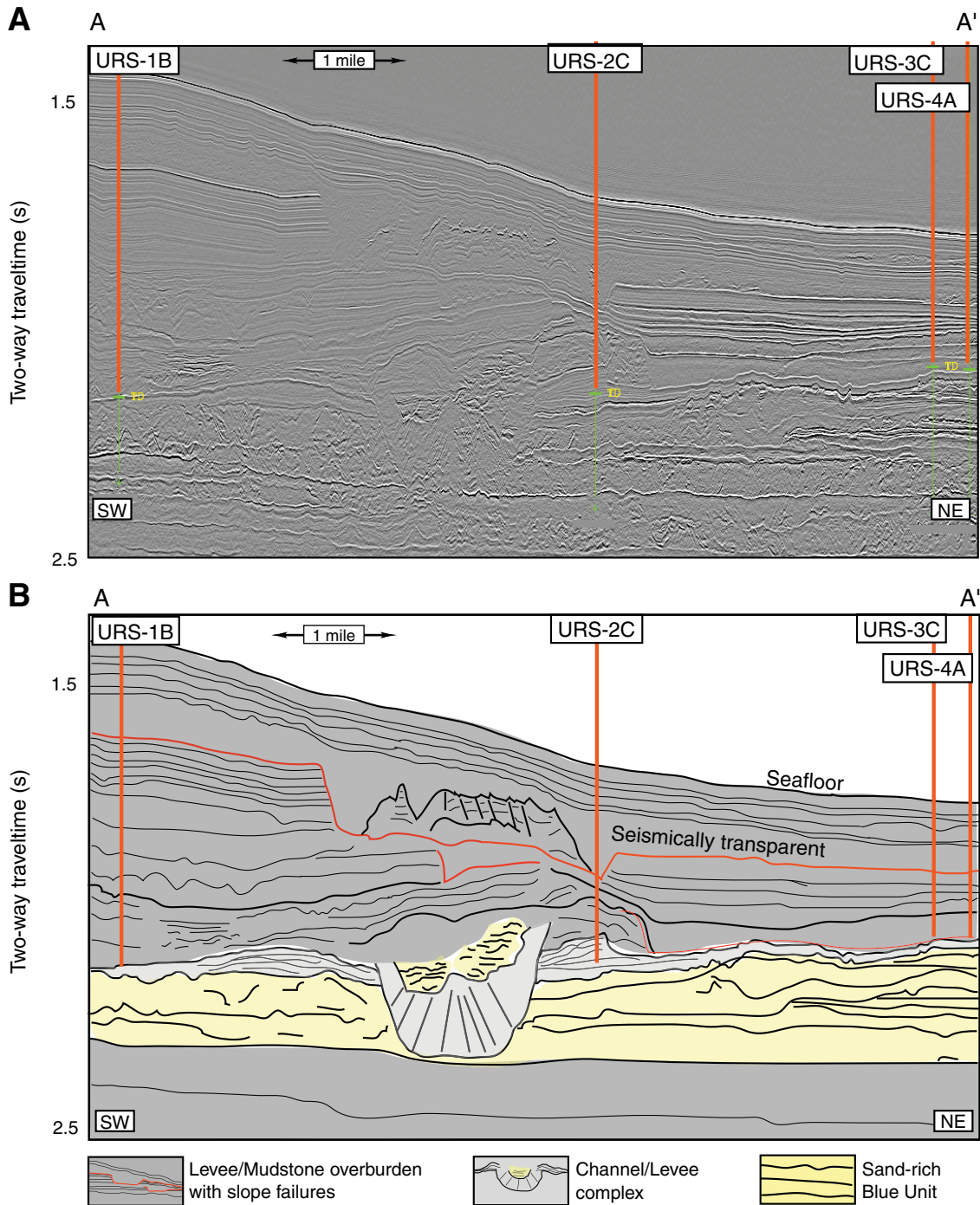
**Figure F8.** Strike seismic Line 3045. Primary Site BT4-2A is located at the intersection of Line 3020 and 3045. Seismic reproduced with permission of Shell Exploration and Production Company.



**Figure F9.** A. Ursa Basin is located 200 km south of New Orleans, Louisiana (USA). B. Bathymetry in the Ursa region (m). Open circles = proposed IODP boreholes, solid circles = logging data are available, solid rectangles = geotechnical wells where whole core was taken and pressure was directly measured. “MARS” and “URSA” delineate locations of the tension leg platforms producing oil from these fields. The square grid and associated numbers delineate Mississippi Canyon lease blocks that are 3 miles  $\times$  3 miles (e.g., the Ursa TLP is in Block M.C. 809).

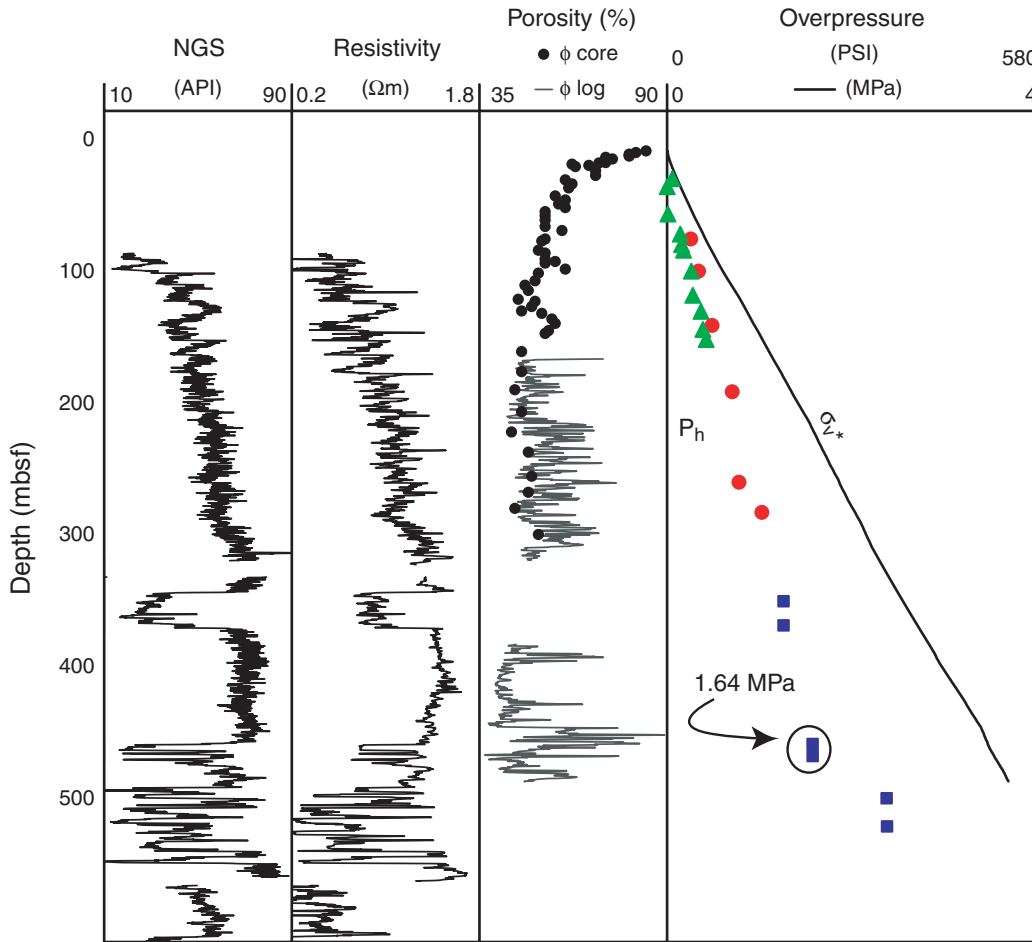


**Figure F10. A.** Seismic cross section A–A'. **B.** Interpreted cross section A–A'. The sand-prone Blue Unit has been incised by a channel-levee complex and then overlain by a thick and heavily slumped hemipelagic mudstone wedge that thickens to the west (left). The Blue Unit sands are correlated to a distinct seismic facies. Seismic reproduced with permission of Shell Exploration and Production Company.

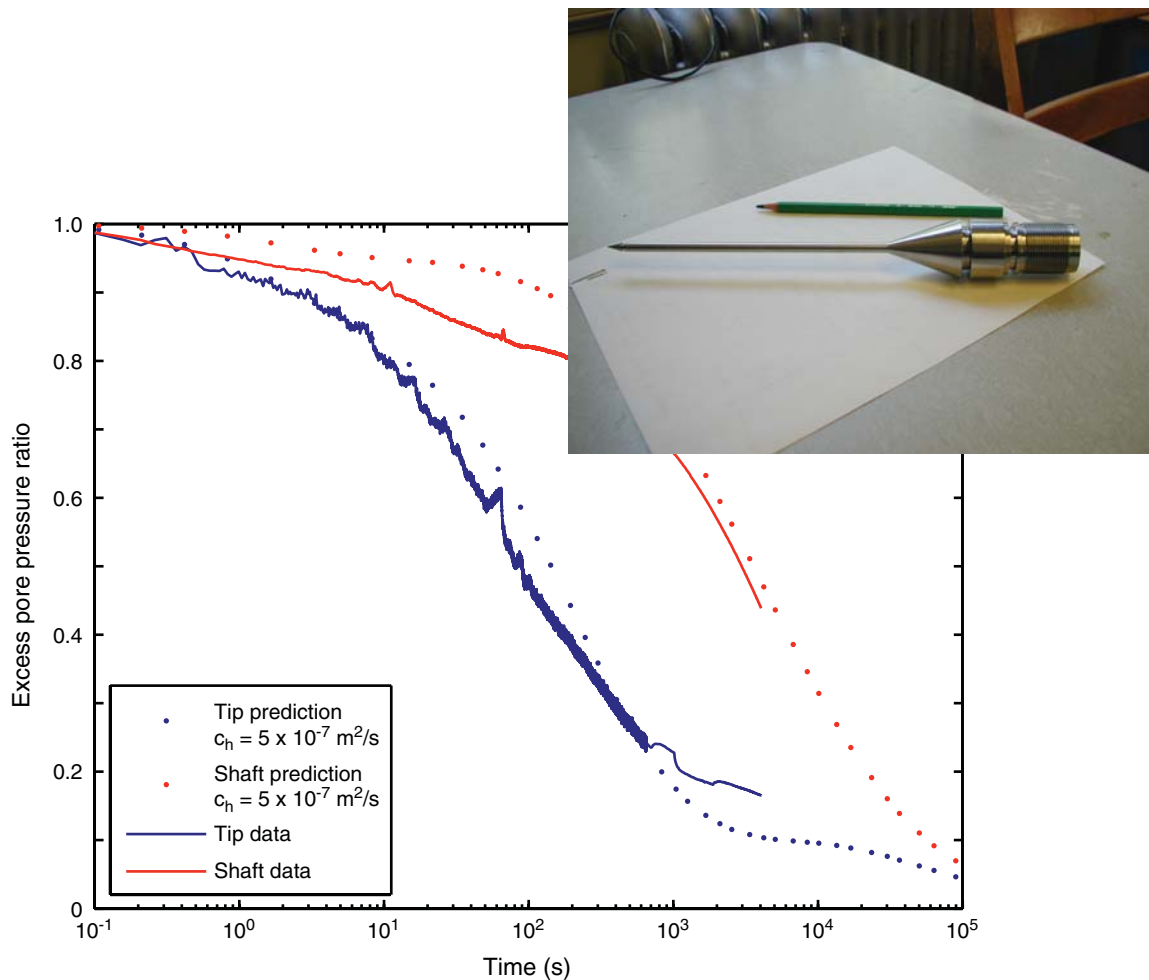




**Figure F11.** Gamma ray and resistivity logs, core and logging porosities, and in situ pressures at M.C. 810 Ursa geotechnical well #1 (located in Fig. F9). The Blue Unit (light gray bars) lies between 300 and 550 mbsf and is composed of interbedded sandstone and mudstone layers. Core porosity ( $\phi$  core) declines rapidly with depth to 200 mbsf and thereafter is constant. Overpressure ( $P^* = P - P_h$ ) is plotted; thus the vertical axis is hydrostatic pressure ( $P_h$ ) and the right boundary of the plot is the reduced lithostatic pressure ( $\sigma_v^* = \sigma_v - P_h$ ). Circles = piezoprobe pressures, triangles = preconsolidation pressures from uniaxial consolidation tests of core, stars = pressure measurements inferred from pressure while drilling (PWD) in the Blue Unit. Ostermeier et al. (2000) and Eaton (1999) further describe these data.



**Figure F12.** The T2P penetrometer is being co-developed at MIT, Penn State, and IODP-TAMU. It is designed to measure pore pressure and hydraulic conductivity in mudstones. The plot illustrates the dissipation at both the tip and the shaft after penetration in a December 2004 land deployment in Boston Blue Clay in Newburyport, Massachusetts (USA). Excess pore pressure ratio =  $(u - u_h)/(u_i - u_h)$ .  $u$  = pore pressure,  $u_h$  = hydrostatic pressure,  $u_i$  = peak insertion pressure.



## SITE SUMMARIES

### Site: BT4-2A

Priority:	Primary
Position:	27.30136298°N, 94.38753682°W
Water depth (m):	1476
Target drilling depth (mbsf):	340
Approved maximum penetration (mbsf):	340
Survey coverage:	<ul style="list-style-type: none"> <li>• Rudder 2-D dipline 3020</li> <li>• Shotpoint 220.76</li> <li>• Rudder 2-D crossline 3045</li> </ul>
Objectives:	Hydrodynamic analysis of a passive margin. Brazos-Trinity Basin #4 sites are to serve as a reference location to establish basic rock and fluid properties over a range of effective stresses in a normally pressured section.
Drilling program:	APC to refusal with drillover and XCB
Wireline logging program:	Triple combo, FMS-sonic, VSP
MWD program:	GVR, ADN, APWD
Nature of rock anticipated:	Hemipelagic mudstone with some unconsolidated turbidite sand

### Site: BT4-4A

Priority:	Primary
Position:	27.26628028°N, 94.40315809°W
Water depth (m):	1435
Target drilling depth (mbsf):	230
Approved maximum penetration (mbsf):	230
Survey coverage:	<ul style="list-style-type: none"> <li>• Rudder 2-D dipline 3020</li> <li>• Shotpoint 187.27</li> </ul>
Objectives:	Hydrodynamic analysis of a passive margin. Brazos-Trinity Basin #4 sites are to serve as a reference location to establish basic rock and fluid properties over a range of effective stresses in a normally pressured section.
Drilling program:	APC to refusal with drillover and XCB
Wireline logging program:	Triple combo, FMS-sonic, VSP
MWD program:	GVR, ADN, APWD
Nature of rock anticipated:	Hemipelagic mudstone with some unconsolidated turbidite sand

**SITE SUMMARIES (CONTINUED)****Site: BT4-1B**

Priority:	Secondary
Position:	27.36771232°N, 94.35774732°W
Water depth (m):	1405
Target drilling depth (mbsf):	300
Approved maximum penetration (mbsf):	300
Survey coverage:	<ul style="list-style-type: none"> <li>• Rudder 2-D dipline 3020</li> <li>• Shotpoint 284.00</li> <li>• Rudder 2-D crossline 3019</li> </ul>
Objectives:	Hydrodynamic analysis of a passive margin. Brazos-Trinity Basin #4 sites are to serve as a reference location to establish basic rock and fluid properties over a range of effective stresses in a normally pressured section.
Drilling program:	APC to refusal with drillover and XCB
Wireline logging program:	Triple combo, FMS-sonic, VSP
MWD program:	GVR, ADN, APWD
Nature of rock anticipated:	Hemipelagic mudstone with some unconsolidated turbidite sand

**Site: BT4-3A**

Proposed Site	BT4-3A
Priority:	Secondary
Position:	27.27568317°N, 94.39891740°W
Water depth (m):	1459
Target drilling depth (mbsf):	280
Approved maximum penetration (mbsf):	280
Survey coverage:	<ul style="list-style-type: none"> <li>• Rudder 2-D dipline 3020</li> <li>• Shotpoint 196.36</li> <li>• Rudder 2-D crossline 3055</li> </ul>
Objectives:	Hydrodynamic analysis of a passive margin. Brazos-Trinity Basin #4 sites are to serve as a reference location to establish basic rock and fluid properties over a range of effective stresses in a normally pressured section.
Drilling program:	APC to refusal with drillover and XCB
Wireline logging program:	Triple combo, FMS-sonic, VSP
MWD program:	GVR, ADN, APWD
Nature of rock anticipated:	Hemipelagic mudstone with some unconsolidated turbidite sand

**SITE SUMMARIES (CONTINUED)****Site: URS-1B**

Priority:	Primary
Position:	28.07974007°N, 89.13930517°W
Water depth (m):	1057
Target drilling depth (mbsf):	612
Approved maximum penetration (mbsf):	612
Survey coverage:	<ul style="list-style-type: none"> <li>• Morgus HR line 150</li> <li>• Morgus HR trace 1100</li> </ul>
Objectives:	Hydrodynamic analysis of a passive margin. Ursa sites will test the flow-focusing model by drilling to 612 mbsf (20 m above the predicted top of the Blue Unit) in an overpressured region where overburden is thick (URS-1B) and where it is thinner (URS-2C, URS-3C).
Drilling program:	APC to refusal with drillover and XCB
Wireline logging program:	Triple combo, FMS-sonic, VSP
MWD program:	GVR, ADN, APWD
Nature of rock anticipated:	Hemipelagic mudstone with some interbedded levee sands

**Site: URS-2C**

Priority:	Primary
Position:	28.09124346°N, 89.07252124°W
Water depth (m):	1262
Target drilling depth (mbsf):	358
Approved maximum penetration (mbsf):	358
Survey coverage:	<ul style="list-style-type: none"> <li>• Morgus HR line 150</li> <li>• Morgus HR trace 2170</li> </ul>
Objectives:	Hydrodynamic analysis of a passive margin. Ursa sites will test the flow focusing model by drilling to 358 mbsf (20 m above the predicted top of the Blue Unit) in an overpressured region where overburden is thick (URS-1B) and where it is thinner (URS-2C, URS-3C).
Drilling program:	APC to refusal with drillover and XCB
Wireline logging program:	Triple combo, FMS-sonic, VSP
MWD program:	GVR, ADN, APWD
Nature of rock anticipated:	Hemipelagic mudstone with some interbedded levee sands

**SITE SUMMARIES (CONTINUED)****Site: URS-3C**

Priority:	Primary
Position:	28.09937740°N, 89.02520153°W
Water depth (m):	1321
Target drilling depth (mbsf):	238
Approved maximum penetration (mbsf):	238
Survey coverage:	<ul style="list-style-type: none"> <li>• Morgus HR line 150</li> <li>• Morgus HR trace 2928</li> </ul>
Objectives:	Hydrodynamic analysis of a passive margin. Ursa sites will test the flow focusing model by drilling to 238 mbsf (20 m above the predicted top of the Blue Unit) in an overpressured region where overburden is thick (URS-1B) and where it is thinner (URS-2C, URS-3C).
Drilling program:	APC to refusal with drillover and XCB
Wireline logging program:	None
MLWD program:	GVR, ADN, APWD
Nature of rock anticipated:	Hemipelagic mudstone

**Site: URS-4A**

Priority:	Secondary
Position:	28.10025610°N, 89.02008217°W
Water depth (m):	1325
Target drilling depth (mbsf):	237
Approved maximum penetration (mbsf):	237
Survey coverage:	<ul style="list-style-type: none"> <li>• Morgus HR line 150</li> <li>• Morgus HR trace 3010</li> </ul>
Objectives:	Hydrodynamic analysis of a passive margin. Ursa Sites will test the flow focusing model by drilling to 237 mbsf (20 m above the predicted top of the Blue Unit) in an overpressured region where overburden is thick (URS-1B) and where it is thinner (URS-2C, URS-3C, URS-4A).
Drilling program:	APC to refusal with drillover and XCB
Wireline logging program:	None
MWD program:	GVR, ADN, APWD
Nature of rock anticipated:	Hemipelagic mudstone

## APPENDIX OF USEFUL REFERENCES

- Alberty, M., 2000. Shallow water flows: a problem solved or a problem emerging. *Proc.—Annu. Offshore Technol. Conf.*, 32:1–7.
- Alberty, M., Hafle, M., Minge, J.C., and Byrd, T., 1997. Mechanisms of shallow waterflows and drilling practices for intervention. *Proc.—Annu. Offshore Technol. Conf.*, 29:1–6.
- Anderson, R.N., and Fillon, R.H. (Ed.), 2004. Late Quaternary Stratigraphic Evolution of the Northern Gulf of Mexico Margin. *Spec. Publ.—SEPM (Soc. Sediment. Geol.)*, 79.
- Aplin, A.C., Yang, Y., and Hansen, S., 1995. Assessment of  $\gamma$ , the compression coefficient of mudstones and its relationship with detailed lithology. *Mar. Pet. Geol.*, 12:955–963.
- Ask, M.V.S., 2001. Mechanical tests on claystone from Ocean Drilling Program Hole 1070A (Leg 173)—implications for elevated pore-fluid pressure in sediments within the ocean-continent transition zone, west Iberia. *Mar. Geol.*, 177:395–410.
- Athy, L.F., 1930. Density, porosity, and compaction of sedimentary rocks. *AAPG Bull.*, 14:1–24.
- Austin, J.A., Jr., Christie-Blick, N., Malone, M.J., et al., 1998. *Proc. ODP, Init. Repts.*, 174A: College Station, TX (Ocean Drilling Program).
- Badalini, G., Kneller, B., and Winker, C.D., 2000. Architecture and processes in the late Pleistocene Brazos–Trinity turbidite system, Gulf of Mexico continental slope. *Deep-Water Reservoirs of the World: Proc. GCSSEPM 20th Annu. Res. Conf.*, 16–34.
- Bangs, N.L.B., Shipley, T.H., and Moore, G.F., 1996. Elevated fluid pressures and fault zone dilation inferred from seismic models of the northern Barbados Ridge décollement. *J. Geophys. Res.*, 101:627–642.
- Bangs, N.L.B., Westbrook, G.K., Ladd, J.W., and Buhl, P., 1990. Seismic velocities from the Barbados Ridge Complex: indicators of high pore fluid pressures in an accretionary complex. *J. Geophys. Res.*, 95:8767–8782.
- Beaubouef, R.T., Abreu, V., and Van Wagoner, J.C., 2003. Basin 4 of the Brazos–Trinity slope system, western Gulf of Mexico: the terminal portion of a late Pleistocene lowstand system tract. *Shelf Margin Deltas and Linked Down Slope Petroleum Systems: Global Significance and Future Exploration Potential: Proc. GCSSEPM 23rd Annu. Res. Conf.*, 45–66.
- Beard, J.H., Sangree, J.B., and Smith, L.A., 1982. Quaternary chronology, paleoclimate, depositional sequences, and eustatic cycles. *AAPG Bull.*, 66:158–169.
- Berryhill, H.L., and Suter, J.R., 1986. Late Quaternary facies and structures, northern Gulf of Mexico. *AAPG Stud. Geol.*, 23.
- Bethke, C.M., 1986. Inverse hydrologic analysis of the distribution and origin of Gulf Coast-type geopressured zones. *J. Geophys. Res.*, 91(B6):6535–6545.
- Biot, M.A., 1941. General theory of three-dimensional consolidation. *J. Appl. Phys.*, 12:155–164.
- Bitzer, K., 1996. Modeling consolidation and fluid flow in sedimentary basins. *Comp. Geosci.*, 22:467–478.
- Bjorlykke, K., 1993. Fluid flow in sedimentary basins. *Sediment. Geol.*, 86:137–158.
- Bjorlykke, K., 1997. Effects of burial diagenesis on stresses, compaction and fluid flow in sedimentary basins. *Mar. Pet. Geol.*, 14:267–276.
- Boehm, A., and Moore, J.C., 2002. Fluidized sandstone intrusions as an indicator of paleo-stress orientation, Santa Cruz, California. *Geofluids*, 2(2):147–161.
- Booth, J.S., O’Leary, D.W., Popenoe, P., and Danforth, W.W., 1993. U.S. Atlantic continental slope landslides: their distribution, general attributes, and implications. In Schwab, W.C., and Twichell, D.C. (Eds.), *Submarine Landslides: Selected Studies in the U.S. Exclusive Economic Zone*: Reston, VA (U.S. Geol. Surv.), 14–22.

- Bouma, A.H., and Roberts, H.H., 1990. Northern Gulf of Mexico continental slope. *Geo-Mar. Lett.*, 10:177–181.
- Bowers, G.L., 1994. Pore pressure estimation from velocity data: accounting for overpressure mechanisms besides undercompaction. *Proc.—IADC/SPE Drill. Conf.*, 515–530.
- Brami, T.R., Pirmez, C., Archie, C., and Holman, K.L., 2000. Late Pleistocene deep-water stratigraphy and depositional processes, offshore Trinidad and Tobago. *Deep-Water Reservoirs of the World: Proc. GCSSEPM 20th Annu. Res. Conf.*
- Brand, J.R., Lanier, D.L., Berger, W.J., III, Kasch, V.R., and Young, A.G., 2003. Relationship between near seafloor seismic amplitude, impedance, and soil shear strength properties and use in prediction of shallow seated slope failure. *Proc.—Annu. Offshore Technol. Conf.*, 35:1–8.
- Bredenhoft, J.D., and Hanshaw, B.B., 1968. On the maintenance of anomalous fluid pressures: 1. Thick sedimentary sequences. *Geol. Soc. Am. Bull.*, 79:1097–1106.
- Brown, A., 2003. Improved interpretation of wireline pressure data. *AAPG Bull.*, 87:295–311.
- Brown, K., 1994. Fluids in deforming sediments. In Maltman, A. (Ed.), *The Geological Deformation of Sediments*: London (Chapman and Hall), 205–237.
- Bruce, B., Borel, R., and Bowers, G., 2002. Well planning for SWF and overpressure at the Kestrel Well. *Leading Edge*, 21(7):669–671.
- Bruce, B., Bowers, G., and Borel, R., 2001. Well planning for shallow water flows and overpressures—the Kestrel well. *Proc.—Annu. Offshore Technol. Conf.*, 33:1–10.
- Bruce, B., and Bowers, G.L., 2002. Pore pressure terminology. *Leading Edge*, 21(2):170–173.
- Bryant, W.R., Bryant, J.R., Feeley, M.H., and Simmons, G.R., 1990. Physiographic and bathymetric characteristics of the continental slope, northwest Gulf of Mexico. *Geo-Mar. Lett.*, 10:182–199.
- Byrd, T.M., Schneider, J.M., Reynolds, D.J., Alberty, M.W., and Hafle, M.E., 1996. Identification of “flowing water sand” drilling hazards in the deepwater Gulf of Mexico. *Proc.—Annu. Offshore Technol. Conf.*, 28:137–146.
- Coleman, J.M., and Roberts, H.H., 1988. Late Quaternary depositional framework of the Louisiana continental shelf and upper continental slope. *Trans.—Gulf Coast Assoc. Geol. Soc.*, 407–419.
- Corthay, J.E., II, and Aliyev, A.A., 2000. Delineation of a mud volcano complex, surficial mudflows, slump blocks, and shallow gas reservoirs, offshore Azerbaijan. *Proc.—Annu. Offshore Technol. Conf.*, 32:1–11.
- Dean, M.C., King, K.M., and Booth, J.R., 2000. The present is the key to the Plio–Pleistocene: seafloor analogues at Shell’s GB 516 Serrano discovery. *Deep-Water Reservoirs of the World: Proc. GCSSEPM 20th Annu. Res. Conf.*, 293–303.
- Dickinson, G., 1953. Geological aspects of abnormal reservoir pressures in Gulf Coast Louisiana. *AAPG Bull.*, 37:410–432.
- Doyle, E.H., 1998. The integration of deepwater geohazard evaluations and geotechnical studies. *Proc.—Annu. Offshore Technol. Conf.*, 30:11–18.
- Driscoll, N.W., Weissel, J.K., and Goff, J.A., 2000. Potential for large-scale submarine slope failure and tsunami generation along the U.S. mid-Atlantic coast. *Geology*, 28:407–410.
- Dugan, B., and Flemings, P.B., 2000. Overpressure and fluid flow in the New Jersey continental slope: implications for slope failure and cold seeps. *Science*, 289:288–291.
- Dugan, B., and Flemings, P.B., 2002. Fluid flow and stability of the US continental slope offshore New Jersey from the Pleistocene to the present. *Geofluids*, 2:137–146.
- Dugan, B., Flemings, P.B., Olgaard, D.L., and Gooch, M.J., 2003. Consolidation, effective stress, and fluid pressure of sediments from ODP Site 1073, US mid-Atlantic continental slope. *Earth Planet. Sci. Lett.*, 215:13–26.



- Eaton, B.A., 1975. The equation for geopressure prediction from well logs: Society of Petroleum Engineers.
- Eaton, L.F., 1999. Drilling through deepwater shallow water flow zones at Ursa. *Proc.—SPE/IADC Middle East Drill. Conf.*, 153–164.
- Feeley, M.H., Moore, T.C., Jr., Loutit, T.S., and Bryant, W.R., 1990. Sequence stratigraphy of Mississippi fan related to oxygen isotope sea level index. *AAPG Bull.*, 74:407–424.
- Fertl, W.H., 1976. *Abnormal Formation Pressures: Implications to Exploration, Drilling, and Production of Oil and Gas Resources*: Amsterdam (Elsevier).
- Finkbeiner, T., Zoback, M., Flemings, P., and Stump, B., 2001. Stress, pore pressure, and dynamically constrained hydrocarbon columns in the south Eugene Island 330 field, northern Gulf of Mexico. *AAPG Bull.*, 85(6):1007–1031.
- Fisk, H.N., and McFarlan, E., 1955. Late Quaternary deltaic deposits of the Mississippi River. *Spec. Pap.—Geol. Soc. Am.*, 279–302.
- Flemings, P.B., Comisky, J., Liu, X., and Lupa, J.A., 2001. Stress-controlled porosity in overpressured sands at Bullwinkle (GC65), deepwater Gulf of Mexico. *Proc.—Annu. Offshore Technol. Conf.*, 33:1–7.
- Flemings, P.B., Stump, B.B., Finkbeiner, T., and Zoback, M., 2002. Flow focusing in overpressured sandstones: theory, observations, and applications. *Am. J. Sci.*, 302:827–855.
- Flood, R.D., Piper, D.J.W., Klaus, A., et al., 1995. *Proc. ODP, Init. Repts.*, 155: College Station, TX (Ocean Drilling Program).
- Flood, R.D., Piper, D.J.W., Klaus, A., and Peterson, L.C. (Eds.), 1997. *Proc. ODP, Sci. Results*, 155: College Station, TX (Ocean Drilling Program).
- Foucher, J.-P., Henry, P., and Harmegnies, F., 1997. Long-term observations of pressure and temperature in Hole 948D, Barbados accretionary prism. In Shipley, T.H., Ogawa, Y., Blum, P., and Bahr, J.M. (Eds.), *Proc. ODP, Sci. Results*, 156: College Station, TX (Ocean Drilling Program), 239–245.
- Fratelli, C.M., 2003. Linking climate, sea level, and sedimentary response on the Texas shelf and upper slope: examples from the Brazos and Colorado fluvial-deltaic system [Ph.D. dissert.]. Rice Univ., Houston, TX.
- Gaarenstroom, L., Tromp, R.A.J., de Jong, M.C., and Brandenburg, A.M., 1993. Overpressures in the central North Sea: implications for trap integrity and drilling safety. *Pet. Geol. Northwest Europe: Proc. 4th Conf.*, 4:1305–1313.
- Gallo, F., and Woods, A.W., 2004. On steady homogeneous sand-water flows in a vertical conduit. *Sedimentology*, 51:195–210.
- Gibson, R.E., 1958. The progress of consolidation in a clay layer increasing in thickness with time. *Geotechnique*, 8:171–182.
- Goodwin, R.H., and Prior, D.B., 1988. Geometry and depositional sequences of the Mississippi Canyon, Gulf of Mexico. *J. Sediment. Petrol.*, 59:318–329.
- Gordon, D.S., and Flemings, P.B., 1998. Generation of overpressure and compaction-driven fluid flow in a Plio–Pleistocene growth-faulted basin, Eugene Island 330, offshore Louisiana. *Basin Res.*, 10:177–196.
- Gouly, N.R., 1998. Relationships between porosity and effective stress in shales. *First Break*, 16:413–419.
- Gouly, N.R., 2004. Mechanical compaction behavior of natural clays and implications for pore pressure estimation. *Pet. Geosci.*, 10:73–79.
- Grauls, D., Dunard, J.P., and Beaufort, D., 1995. Predicting abnormal pressure from 2D seismic velocity modeling. *Proc.—Annu. Offshore Technol. Conf.*, 27:525–534.
- Hackbarth, C.J., and Shew, R.D., 1994. Morphology and stratigraphy of a mid-Pleistocene turbidite leveed channel from seismic, core, and log data, northeastern Gulf of Mexico. In

- Bouma, A.H., and Perkins, B.G. (Eds.), *Submarine Fans and Turbidite Systems: Proc. GCSSEPM 15th Annu. Res. Conf.*, 127–133.
- Ham, H.H., 1966. A method of estimating formation pressures from Gulf Coast well logs. *Trans.—Gulf Coast Assoc. Geol. Soc.*, 16:185–197.
- Hampton, M.A., 1996. Submarine landslides. *Rev. Geophys.*, 34:33–59.
- Hardin, N.S., 1986. Mass transport deposits of the upper continental slope, northwestern Gulf of Mexico. *AAPG Bull.*, 23:241–285.
- Harrison, W.J., and Summa, L.L., 1991. Paleohydrology of the Gulf of Mexico Basin. *Am. J. Sci.*, 291:109–176.
- Harrold, T.W.D., Swarbrick, R.E., and Goult, N.R., 1999. Pore pressure estimation from mudrock porosities in Tertiary basins, southeast Asia. *AAPG Bull.*, 83:1057–1067.
- Hart, B.S., Flemings, P.B., and Deshpande, A., 1995. Porosity and pressure: role of compaction disequilibrium in the development of geopressures in a Gulf Coast Pleistocene basin. *Geology*, 23:45–48.
- Huffman, A.R., and Castagna, J.P., 1999. Rock physics and mechanics considerations for shallow water flow characterization [International Forum on Shallow Water Flows, League City, TX, 6–8 Oct., 1999].
- Imbrie, J., Hays, J.D., Martinson, D.G., McIntyre, A., Mix, A.C., Morley, J.J., Pisias, N.G., Prell, W.L., and Shackleton, N.J., 1984. The orbital theory of Pleistocene climate: support from a revised chronology of the marine  $^{18}\text{O}$  record. In Berger, A., Imbrie, J., Hays, J., Kukla, G., and Saltzman, B. (Eds.), *Milankovitch and Climate* (Pt. 1): Hingham, MA (D. Riedel Publ. Co.), 269–305.
- Jeanjean, P., Hill, A., and Thomson, J., 2003. The case for confidently siting facilities along the Sigsbee escarpment in the southern Green Canyon area of the Gulf of Mexico: summary and conclusions from integrated studies. *Proc.—Annu. Offshore Technol. Conf.*, 35.
- Johnson, D.W., 1939. *The Origin of Submarine Canyons: A Critical Review of Hypotheses*: New York (Hafner).
- Jolly, R.H., and Lonergan, L., 2002. Mechanisms and controls on the formation of sand intrusions. *J. Geol. Soc. (London, U. K.)*, 159:605–617.
- Jones, M., 1994. Mechanical principles of sediment deformation. In Maltman, A., (Ed.), *The Geological Deformation of Sediments*: London (Chapman and Hall), 37–71.
- Joyce, J.E., Tjalsma, L.R.C., and Prutzman, J.M., 1990. High-resolution planktic stable isotope record and spectral analysis for the last 5.35 m.y.: Ocean Drilling Program Site 625 North-east Gulf of Mexico. *Paleoceanography*, 5:507–529.
- Karig, D., 1992. High-stress consolidation experiments and their geologic implications. *J. Geophys. Res.*, 97:289–300.
- Karig, D.E., 1996. Uniaxial reconsolidation tests on porous sediments: mudstones from Site 897. In Whitmarsh, R.B., Sawyer, D.S., Klaus, A., and Masson, D.G. (Eds.), *Proc. ODP, Sci. Results*, 149: College Station, TX (Ocean Drilling Program), 363–373.
- Kennett, J.P., Elstrom, K., and Penrose, N., 1985. Late Pleistocene paleoclimatology, foraminiferal biostratigraphy, and tephrochronology: western Gulf of Mexico. *Quat. Res.*, 2:38–69.
- Kohl, B., and Roberts, H.H., 1994. Fossil foraminifera from four active mud volcanoes in the Gulf of Mexico. *Geo-Mar. Lett.*, 14:126–134.
- Kolla, V., and Perlmutter, M.A., 1993. Timing of turbidite sedimentation on the Mississippi Fan. *AAPG Bull.*, 77:1129–1141.
- Koppula, S.D., and Morgenstern, N.R., 1982. On the consolidation of sedimenting clays. *Can. Geotech. J.*, 19:260–268.
- Lambeck, K., and Chappell, J., 2001. Sea level change through the last glacial cycle. *Science*, 292:679–686.

- Lee, G.H., Watkins, J.S., and Bryant, W.R., 1996. Bryant Canyon fan system: an unconfined, large-river turbidity system in the northwestern Gulf of Mexico. *AAPG Bull.*, 80:340–358.
- Li, Y.-H., and Gregory, S., 1974. Diffusion of ions in seawater and deep sea sediments. *Geochim. Cosmochim. Acta*, 38:703–714.
- Lupa, J., Flemings, P.B., and Tennant, S., 2002. Pressure and trap integrity in the deepwater Gulf of Mexico. *Leading Edge*, 21:184–187.
- MacDonald, I.R., Guinasso, N.L., Jr., Reilly, J.F., Brooks, J.M., Callender, W.R., and Gabrielle, S.G., 1990. Gulf of Mexico hydrocarbon seep communities: VI. Patterns in community structure and habitat. *Geo-Mar. Lett.*, 10:244–252.
- Mahaffie, M.J., 1994. Reservoir classification for turbidite intervals at the Mars discovery, Mississippi Canyon Block 807, Gulf of Mexico. In Bouma, A.H., and Perkins, B.G. (Eds.), *Submarine Fans and Turbidite Systems: Proc. GCSSEPM 15th Annu. Res. Conf.*, 233–244.
- Maltman, A.J., 1994. Introduction and overview. In Maltman, A. (Ed.), *The Geological Deformation of Sediments*: London (Chapman and Hall), 1–35.
- Mann, D.M., and Mackenzie, A.S., 1990. Prediction of pore fluid pressures in sedimentary basins. *Mar. Pet. Geol.*, 7:55–65.
- Martin, R.E., Johnson, G.W., Neff, E.D., and Krantz, D.W., 1990. Quaternary planktonic foraminiferal assemblage zones of the northeast Gulf of Mexico, Columbia Basin (Caribbean Sea), and tropical Atlantic Ocean: graphic correlation of microfossil and oxygen isotope datums. *Paleoceanography*, 5:531–555.
- McAdoo, B.G., Pratson, L.F., and Orange, D.L., 2000. Submarine landslide geomorphology, U.S. continental slope. *Mar. Geol.*, 169:103–136.
- McFarlan, E., and LeRoy, D.O., 1988. Subsurface geology of the late Tertiary and Quaternary deposits, coastal Louisiana, and the adjacent continental shelf. *Trans.—Gulf Coast Assoc. Geol. Soc.*, 421–433.
- Mello, U.T., and Pratson, L.F., 1999. Regional slope stability and slope-failure mechanics from the two-dimensional state of stress in an infinite slope. *Mar. Geol.*, 154:339–356.
- Moore, J.C., Shipley, T.H., Goldberg, D., Ogawa, Y., Filice, F., Fisher, A., Jurado, M.-J., Moore, G.F., Rabaute, A., Yin, H., Zwart, G., and Brueckmann, W., Henry, P., Ashi, J., Blum, P., Meyer, A., Housen, B., Kastner, M., Labaume, P., Laier, T., Leitch, E.C., Maltman, A.J., Peacock, S., Steiger, T.H., Tobin, H.J., Underwood, M.B., Xu, Y., Zheng, Y., 1995. Abnormal fluid pressures and fault zone dilation in the Barbados accretionary prism: evidence from logging while drilling. *Geology*, 23:605–608.
- Morton, R.A., and Suter, R.J., 1996. Sequence stratigraphy and composition of late Quaternary shelf-margin deltas, northern Gulf of Mexico. *AAPG Bull.*, 80:505–530.
- Nations, J.F., and Medley, G.H., Jr., 1997. DeepStar's evaluation of shallow water flow problems in the Gulf of Mexico. *Proc.—Annu. Offshore Technol. Conf.*, 29:1–6.
- Neurauter, T.W., and Bryant, W.R., 1990. Seismic expression of sedimentary volcanism on the continental slope, northern Gulf of Mexico. *Geo-Mar. Lett.*, 10:225–231.
- Niedoroda, A.W., Reed, C.W., Hatchett, L., Young, A., Lanier, D., Kasch, V., Jeanjean, P., Orange, D., and Bryant, W., 2003. Analysis of past and future debris flows and turbidity currents generated by slope failures along the Sigsbee escarpment in the deep Gulf of Mexico. *Proc.—Annu. Offshore Technol. Conf.*, 35:1–7.
- Nisbet, E.G., and Piper, D.J., 1998. Giant submarine landslides. *Nature*, 392:329–330.
- Nur, A., Mavko, G., Dvorkin, J., and Galmudi, D., 1998. Critical porosity: a key to relating physical properties to porosity in rocks. *Leading Edge*, 17:357–362.
- Orange, D.L., Saffer, D., Jeanjean, P., Al-Khafaji, Z., Riley, G., and Humphrey, G., 2003. Measurements and modeling of the shallow pore pressure regime at the Sigsbee escarpment: successful prediction of overpressure and ground-truthing with borehole measurements. *Proc.—Annu. Offshore Technol. Conf.*, 35:1–11.

- Ostermeier, R.M., Pelletier, J.H., Winker, C.D., and Nicholson, J.W., 2001. Trends in shallow sediment pore pressures. *Proc.—SPE/IADC Drill. Conf.*, 1–11.
- Ostermeier, R.M., Pelletier, J.H., Winker, C.D., Nicholson, J.W., and Cowan, C.K., 2002. Dealing with shallow-water flow in the deepwater Gulf of Mexico. *Leading Edge*, 21(7):660, 662–668.
- Ostermeier, R.M., Pelletier, J.H., Winker, C.D., Nicholson, J.W., Rambow, F.H., and Cowan, K.M., 2000. Dealing with shallow-water flow in the deepwater Gulf of Mexico. *Proc. Offshore Tech. Conf.*, 32(1):75–86.
- Palciauskas, V.V., and Domenico, P.A., 1989. Fluid pressures in deforming porous rocks. *Water Resour. Res.*, 25:203–213.
- Paull, C.K., Buelow, W.J., Ussler, W., III, and Borowski, W.S., 1996. Increased continental margin slumping frequency during sea-level lowstands above gas hydrate-bearing sediments. *Geology*, 24:143–146.
- Pelletier, J.H., Ostermeier, R.M., Winker, C.D., Nicholson, J.W., and Rambow, F.H., 1999. Shallow water flow sands in the deepwater Gulf of Mexico: some recent Shell experience [International Forum on Shallow Water Flows Conference, League City, TX, 6–8 Oct., 1999].
- Pirmez, C., Beaubouef, R.T., Friedmann, S.J., and Mohrig, D.C., 2000. Equilibrium profile and base level in submarine channels: examples from late Pleistocene systems and implications for the architecture of deepwater reservoirs. *Deep-Water Reservoirs of the World: Proc. GCSSEPM 20th Annu. Res. Conf.*, 782–805.
- Posamentier, H., and Kolla, V., 2003. Seismic geomorphology and stratigraphy of depositional elements in deep-water settings. *J. Sediment. Res.*, 73:367–388.
- Prather, B.E., Booth, J.R., Steffens, G.S., and Craig, P.A., 1998. Classification, lithologic calibration, and stratigraphic succession of seismic facies of intraslope basins, deep-water Gulf of Mexico. *AAPG Bull.*, 82:701–728.
- Pratson, L.F., and Ryan, W.B.F., 1994. Pliocene to Recent infilling and subsidence of intraslope basins offshore Louisiana. *AAPG Bull.*, 78:1483–1506.
- Prior, D.B., Bornhold, B.D., and Johns, M.W., 1984. Depositional characteristics of a submarine debris flow. *J. Geol.*, 92:707–727.
- Pulham, A.J., 1993. Variations in slope deposition, Pliocene–Pleistocene, offshore Louisiana, northeast Gulf of Mexico. In Posamentier, H., and Weimer, P. (Eds.), *Siliclastic Sequence Stratigraphy: Recent Developments and Applications*. AAPG Mem., 58:199–233.
- Revil, A., Cathles, L.M., III, Shosa, J.D., Pezard, P.A., and de Larouziere, F.D., 1998. Capillary sealing in sedimentary basins: a clear field example. *Geophys. Res. Lett.*, 25:389–392.
- Revil, A., Pezard, P.A., and de Larouzière, F.D., 1999. Fluid overpressures in western Mediterranean sediments, Sites 974–979. In Zahn, R., Comas, M.C., and Klaus, A. (Eds.), *Proc. ODP, Sci. Results*, 161: College Station, TX (Ocean Drilling Program), 117–128.
- Reynolds, T., 2000. Reservoir architecture in the Mars field, deepwater Gulf of Mexico, U.S.A.: the implications of production, seismic, core, and well-log data. *Deep-Water Reservoirs of the World: Proc. GCSSEPM 20th Annu. Res. Conf.*
- Riggins, M., 1992. Consolidation and strength assessment of deep-ocean sediments from the Argo and Gascoyne abyssal plains, Indian Ocean. In Gradstein, F.M., Ludden, J.N., et al., *Proc. ODP, Sci. Results*, 123: College Station, TX (Ocean Drilling Program), 493–501.
- Roberts, H.H., 1992. Reefs, bioherms, and lithoherms of the northern Gulf of Mexico: the important role of hydrocarbon seeps. *Proc. Int. Coral Reef Symp.* (7th), 1121–1128.
- Roberts, H.H., and Carney, R.S., 1997. Evidence of episodic fluid, gas and sediment venting on the northern Gulf of Mexico continental slope. *Econ. Geol.*, 92:863–879.
- Roberts, S.J., and Nunn, J.A., 1995. Episodic fluid expulsion from geopressed sediments. *Mar. Pet. Geol.*, 12:195–204.

- Roberts, S.J., Nunn, J.A., Cathles, L., and Cipriani, F.-D., 1996. Expulsion of abnormally pressured fluids along faults. *J. Geophys. Res., [Solid Earth Planets]*, 101:28231–28252.
- Rubey, W.W., and Hubbert, M.K., 1959. Role of fluid pressure in mechanics of overthrust faulting, Part 2. Overthrust belt in geosynclinal area of western Wyoming in light of fluid-pressure hypothesis. *Geol. Soc. Am. Bull.*, 70:167–205.
- Saffer, D.M., Silver, E.A., Fisher, A.T., Tobin, H., and Moran, K., 2000. Inferred pore pressures at the Costa Rica subduction zone: implications for dewatering processes. *Earth Planet. Sci. Lett.*, 177:193–207.
- Saller, A.H., Noah, J.T., Ruzuar, A.P., and Schneider, R., 2004. Linked lowstand delta to basin-floor fan deposition, offshore Indonesia: an analog for deep-water reservoir systems. *AAPG Bull.*, 88:21–46.
- Schofield, K., and Serbeck, J., 2000. The “above magenta” reservoir at Ursa field: a classic process-response model to explain a classic wireline log signature. *Deep-Water Reservoirs of the World: Proc. GCSSEPM 20th Annu. Res. Conf.*, 894–910.
- Schultheiss, P.J., and McPhail, S.D., 1986. Direct indication of pore water advection from pore pressure measurements in Madeira Abyssal Plain sediments. *Nature*, 320:348–350.
- Shaub, F.J., Buffler, R.T., and Parsons, J.G., 1984. Seismic stratigraphic framework of deep central Gulf of Mexico basin. *AAPG Bull.*, 68:1790–1802.
- Silva, A.J., Baxter, C., Bryant, W.R., Bradshaw, A., and LaRosa, P., 2000. Stress-strain behavior and stress state of Gulf of Mexico clays in relation to slope processes. *Proc. Offshore Tech. Conf.*, 32(1):451–460.
- Slowey, N., Bryant, W., Bean, D.A., Young, A.G., and Gartner, S., 2003. Sedimentation in the vicinity of the Sigsbee escarpment during the last 25,000 yrs. *Proc. Offshore Tech. Conf.*, 35:1–15.
- Stelling, C.E., Pickering, K.T., Bouma, A.H., Coleman, J.M., Cremer, M., Droz, L., Wright Meyer, A.A., Normark, W.R., O’Connell, S., Stow, D.A.V., and DSDP Leg 96 Shipboard Scientists, 1985. Drilling results on the middle Mississippi Fan. In Bouma, A.H., Normark, W.R., and Barnes, N.E. (Eds.), *Submarine Fans and Related Turbidite Systems*: New York (Springer), 275–282.
- Stiles, D.A., 1997. Successful cementing in areas prone to shallow saltwater flows in deep-water Gulf of Mexico. *Proc. Offshore Tech. Conf.*, 29(1):269–276.
- Styzen, M.J., 1996. A chart in two sheets of the late Cenozoic chronostratigraphy of the Gulf of Mexico. Gulf Coast Section, Society of Economic Paleontologists and Mineralogists.
- Sultan, N., Cochonat, P., Bourillet, J.F., Cayocca, F., and Colliat, J.L., 2001. Back-analysis of submarine slumping in the Gabon continental slope: a pseudo-3D approach. *Proc. Offshore Tech. Conf.*, 33(2):821–834.
- Suter, J.R., and Berryhill, H.L., Jr., 1985. Late Quaternary shelf-margin deltas, northwest Gulf of Mexico. *AAPG Bull.*, 69:77–91.
- Swarbrick, R.E., 2001. Pore-pressure prediction: pitfalls in using porosity. *Proc. Offshore Tech. Conf.*, 33(2):27–36.
- Templeton, J.S., III, Murff, J.D., Goodwin, R.H., and Klejbuk, L.W., 1985. Evaluating soils and hazards in the Mississippi Canyon. *Proc. Offshore Tech. Conf.*, 17(3):63–72.
- Terzaghi, K., 1956. Varieties of Submarine Slope Failures. *Proc. 8th Texas Conf. Soil Mech. Found. Eng.*, 1–42.
- Toniolo, H., 2002. Experiments and theoretical models of debris-flows and turbidity currents (Ph.D. dissert.). Univ. Minnesota, Minneapolis.
- Traugott, M., Heppard, P., and Dodd, T., 1999. Pressure prediction for shallow water evaluation [International Forum on Shallow Water Flows, League City, TX, 6–8 Oct., 1999].
- Traugott, M.O., 1997. Pore/fracture pressure determinations in deep water. *Deepwater Tech. (World Oil suppl.)*, 68–70.

- Turner, K.M., and Morales, L.J., 2000. Riserless drilling with CaCl<sub>2</sub> mud prevents shallow water flows. *Proc.—IADC/SPE Drill. Conf.*, 1–8.
- Walls, J., Dvorkin, J., Mavko, G., and Nur, A., 2000. Use of compressional and shear wave velocity for overpressure detection. *Proc. Offshore Tech. Conf.*, 32(2):199–203.
- Weimer, P., 1990. Sequence stratigraphy, facies geometries, and depositional history of the Mississippi Fan, Gulf of Mexico. *AAPG Bull.*, 74:425–453.
- Weimer, P., and Buffler, R.T., 1988. Distribution and seismic facies of Mississippi Fan channels. *Geology*, 16:900–903.
- Winker, C.D., 1996. High-resolution seismic stratigraphy of a late Pleistocene submarine fan ponded by salt-withdrawal minibasins on the Gulf of Mexico continental slope. *Proc. 3rd Annu. Offshore Technol. Conf.*, 28(1):619–628.
- Winker, C.D., and Booth, J.R., 2000. Sedimentary dynamics of the salt-dominated continental slope, Gulf of Mexico: integration of observations from the seafloor, near-surface, and deep subsurface. *Deep-Water Reservoirs of the World: Proc. GCSSEPM 20th Annu. Res. Conf.*, 1059–1086.
- Winker, C.D., and Shipp, R.C., 2002. Sequence stratigraphic framework for prediction of shallow water flow in the greater Mars-Ursa area, Mississippi Canyon area, Gulf of Mexico continental slope [22nd Annual GCSSEPM Foundation Bob F. Perkins Research Conference, Houston, TX, 8–11 Dec., 2002]. (Abstract)
- Winters, W.J., 2000. Stress history and geotechnical properties of sediment from the Cape Fear Diapir, Blake Ridge Diapir, and Blake Ridge. In Paull, C.K., Matsumoto, R., Wallace, P.J., and Dillon, W.P. (Eds.), *Proc. ODP, Sci. Results*, 164: College Station, TX (Ocean Drilling Program), 421–429.
- Worrall, D.M., and Snelson, S., 1989. Evolution of the northern Gulf of Mexico, with emphasis on Cenozoic growth faulting and the role of salt. In Bally, A.W., and Pater, A.R. (Eds.), *The Geology of North America—An Overview* (Vol. A): Boulder, CO (Geol. Soc. Am.), 97–137.
- Yardley, G.S., Aplin, A., Macleod, G., Osborne, M.J., and Swarbrick, R.E., 1998. Pore pressure enhancement at structural crests by lateral transfer [American Association of Drilling Engineers Industry Forum on Pressure Regimes in Sedimentary Basins and their Prediction, Lake Conroe, TX, 2–4 Sept., 1998].
- Yardley, G.S., Aplin, A., Macleod, G., Osborne, M.J., and Swarbrick, R.E., 1998. Pore pressure enhancement at structural crests by lateral transfer [American Association of Drilling Engineers Industry Forum on Pressure Regimes in Sedimentary Basins and their Prediction, Lake Conroe, TX, 2–4 Sept. 1998].
- Yardley, G.S., and Swarbrick, R.E., 2000. Lateral transfer: a source of additional overpressure? *Mar. Pet. Geol.*, 17:523–537.
- Zoback, M.D., and Healy, J.H., 1984. Friction, faulting and in situ stress. *Ann. Geophys.*, 2:689–698.

## SCIENTIFIC PARTICIPANTS

### Co-Chief Scientist

#### Jan H. Behrmann

Geologisches Institut  
Universität Freiburg  
Albertstrasse 23B  
Freiburg 79104  
Germany

[jan.behrmann@geologie.uni-freiburg.de](mailto:jan.behrmann@geologie.uni-freiburg.de)

Work: (49) 761-203-6495

Fax: (49) 761-203-6496

### Co-Chief Scientist

#### Peter B. Flemings

Department of Geosciences  
Pennsylvania State University  
307 Deike Building  
University Park PA 16802-2714  
USA

[flemings@geosc.psu.edu](mailto:flemings@geosc.psu.edu)

Work: (814) 863-7072

Fax: (814) 863-7823

### Staff Scientist

#### Cédric M. John

Department of Earth Sciences  
University of California, Santa Cruz  
1156 High Street  
Santa Cruz CA 95064  
USA

[cjohn@es.ucsc.edu](mailto:cjohn@es.ucsc.edu)

Work: (831) 459-3280

Fax: (831) 459-3074

### Logging Staff Scientist

#### Gerardo J. Iturrino

Lamont-Doherty Earth Observatory  
Columbia University  
Borehole Research Group  
Palisades NY 10964  
USA

[iturrino@ldeo.columbia.edu](mailto:iturrino@ldeo.columbia.edu)

Work: (914) 365-8656

Fax: (914) 365-3182

### Microbiologist

#### Takuro Nunoura

Subground Animalcule Retrieval Project (SUGAR PJ)  
Japan Marine Science and Technology Center  
2-15 Natsushima-cho  
Yokosuka 237-0061  
Japan

[takuron@jamstec.go.jp](mailto:takuron@jamstec.go.jp)

Work: (81) 46-867-9707

Fax: (81) 46-867-9715

### Inorganic Geochemist

#### William Patrick Gilhooly III

Department of Environmental Sciences  
University of Virginia  
291 McCormick Road  
111 Clark Hall  
Charlottesville VA 22904-4123  
USA

[wpg6n@virginia.edu](mailto:wpg6n@virginia.edu)

Work: (434) 924-6845

Fax: (434) 982-2137

### Inorganic Geochemist

#### Shao Yong Jiang

Earth Sciences  
Nanjing University  
22 Hankou Road  
Nanjiang 210093  
China

[shyjiang@public1.ptt.js.cn](mailto:shyjiang@public1.ptt.js.cn)

Work: (86) 25-8359-6832

Fax: (86) 25-8368-6016

### Organic Geochemist

#### Yoshinori Takano

Department of Earth and Planetary Sciences  
Hokkaido University  
N8W10, Kita-ku  
Sapporo 060-0810  
Japan

[takano@nature.sci.hokudai.ac.jp](mailto:takano@nature.sci.hokudai.ac.jp)

Work: (81) 11-706-4638

Fax: (81) 11-706-3683

### Geophysicist, Specialist/Technician - Other

#### Neil De Silva

389 Ambleside  
London, Ontario N6G 4YZ  
Canada

[cdesilv2@uwo.ca](mailto:cdesilv2@uwo.ca)

### Logging Scientist

#### Brandon E. Dugan

Department of Earth Science  
Rice University  
6100 Main Street  
Houston, TX 77005  
USA

[dugan@rice.edu](mailto:dugan@rice.edu)

Work: (713) 348-5088

Fax: (713) 348-5214

**Paleomagnetist**

**Christine Franke**

Department of Geosciences  
Universität Bremen  
Klagenfurter Strasse, P.O. Box 330 440  
Bremen 28359  
Germany

[cfranke@uni-bremen.de](mailto:cfranke@uni-bremen.de)

Work: (49) 421-218-8956

Fax: (49) 421-218-7008

**Paleontologist (Foraminifers)**

**Qianyu Li**

School of Ocean and Earth Science  
Tongji University  
Shanghai 200092  
China

Work: (86) 21 6598 7968

Fax: (86) 21 6598 8808

**Paleontologist (Nannofossil)**

**Anatoliy V. Shumnyk**

Department of Geological Sciences  
Florida State University  
4100 FSU

Tallahassee FL 32306-4100

USA

[anatoliy.shumnyk@bugware.com](mailto:anatoliy.shumnyk@bugware.com)

Work: (850) 668-3894

Fax: (850) 668-3893

**Physical Properties Specialist**

**Yasutaka Aizawa**

Department of Geology and Mineralogy  
Kyoto University  
Kitashirakawa-Oiwakecho  
Sakyo-ku, Kyoto 606-8502  
Japan

[inaho0go@kueps.kyoto-u.ac.jp](mailto:inaho0go@kueps.kyoto-u.ac.jp)

Work: (81) 75-753-4181

Fax: (81) 75-753-4189

**Physical Properties Specialist**

**Nguyen Thi Thanh Binh**

Department of Geosystem Engineering  
University of Tokyo  
Faculty of Engineering Bldg. #4  
7-3-1 Hongo  
Bunkyo-ku, Tokyo 113-8656  
Japan

[tt26743@mail.ecc.u-tokyo.ac.jp](mailto:tt26743@mail.ecc.u-tokyo.ac.jp)

Work: (81) 3 5841 7024

Fax: (81) 3 3818 7492

**Physical Properties Specialist**

**Tommy M. Edeskar**

Department of Civil, Mining and Environmental  
Engineering  
Luleå University of Technology  
Division of Geotechnical Engineering and Mining  
Luleå 971 87  
Sweden

[tommy.edeskar@ltu.se](mailto:tommy.edeskar@ltu.se)

Work: (46) 920 49 1334

Fax: (46) 920 49 2075

**Physical Properties Specialist**

**Aurélien Gay**

Challenger Division for Seafloor Processes  
Southampton Oceanography Centre  
Empress Dock, Room 786/12 SOC  
Southampton, England SO14 3ZH  
United Kingdom

[ayg@soc.soton.ac.uk](mailto:ayg@soc.soton.ac.uk)

Work: (44) 23 8059 6614

Fax: (44) 23 8059 6554

**Physical Properties Specialist/  
Downhole Tools Specialist**

**Hui Long**

Energy and Geo-Environmental Engineering  
Pennsylvania State University  
305 Deike Bldg.  
University Park PA 16802  
USA

[hlong@geosc.psu.edu](mailto:hlong@geosc.psu.edu)

Work: (814) 803-9663

Fax: (814) 863-7823

**Physical Properties Specialist**

**Roger Urgeles**

Stratigraphy, Paleontology and Marine Geosciences  
Universitat de Barcelona  
c. Martí i Franqués s/n  
Barcelona, Catalonia 08028  
Spain

[urges@ub.edu](mailto:urges@ub.edu)

Work: (34) 93 402 13 75

Fax: (34) 93 402 13 40

**Sedimentologist**

**Julia Gutierrez-Pastor**

Instituto Andaluz de Ciencias de la Tierra  
Universidad de Granada  
Campus de Fuente Nueva  
Granada 18002  
Spain

[juliagp@ugr.es](mailto:juliagp@ugr.es)

Work: (34) 95 824 0508

Fax: (34) 95 824 3384



**Sedimentologist, Structural Geologist**

**J. Casey Moore**

Earth Sciences Department  
University of California, Santa Cruz  
1156 High Street  
Santa Cruz CA 95064  
USA

[cmoore@es.ucsc.edu](mailto:cmoore@es.ucsc.edu)

Work: (831) 459-2574

Fax: (831) 459-3074

**Sedimentologist**

**Carlos Pirmez**

Turbidites Research Team  
Shell International Exploration and Production Inc.  
3737 Bellaire Blvd.  
Houston TX 77025  
USA

[carlos.pirmez@shell.com](mailto:carlos.pirmez@shell.com)

Work: (713) 245-7464

Fax: (713) 245-7850

**Sedimentologist**

**Derek E. Sawyer**

Department of Geosciences  
Pennsylvania State University  
313 Deike Bldg.  
University Park PA 16802  
USA

[dsawyer@geosc.psu.edu](mailto:dsawyer@geosc.psu.edu)

Work: (814) 863-9723

Fax: (814) 863-7823

**Sedimentologist**

**Julia Schneider**

Marine Engineering Geology/Marine Geotechnics  
Universität Bremen  
FB 05 Geowissenschaften  
Loebnerstrasse, MARUM Gebäude  
Bremen 28359  
Germany

[juliasch@uni-bremen.de](mailto:juliasch@uni-bremen.de)

Work: (49) 160 9195 3975

Fax: (49) 421 2186 5810

**Sedimentologist**

**Takahiro Suzuki**

Earth Evolution Sciences  
University of Tsukuba  
1-1-1 Tennodai  
c/o Prof. Y. Ogawa  
Tsukuba, Ibaraki 305-8572  
Japan

[takahiro7211@yahoo.co.jp](mailto:takahiro7211@yahoo.co.jp)

Work: (81) 29-853-4473

Fax: (81) 29-851-9764

**Sedimentologist, Structural Geologist**

**Yuzuru Yamamoto**

Institute of Geosciences  
Shizuoka University  
836 Oya  
Shizuoka, Shizuoka 422-8529  
Japan

[syyamam@ipc.shizuoka.ac.jp](mailto:syyamam@ipc.shizuoka.ac.jp)

Work: (81) 54-238-4906

Fax: (81) 54-238-0491

**Sedimentologist**

**Valentina Zampetti**

Faculty of Earth Sciences  
Vrije Universiteit  
1085 De Boelelaan  
Amsterdam 1081  
Netherlands

[valentina.zampetti@falw.vu.nl](mailto:valentina.zampetti@falw.vu.nl)

Work: (31) 20 598 7272

Fax: (31) 20 598 9941

**Logging Trainee**

**Marc Reichow**

Department of Geology  
University of Leicester  
University Road  
Leicester LE1 7RH  
United Kingdom

[mkr6@le.ac.uk](mailto:mkr6@le.ac.uk)

Work: (44) 116 252 3638

Fax: (44) 116 252 3918

**Schlumberger Engineer**

**Steven Kittredge**

911 Center Point Rd.  
Carrollton GA 30117  
USA

[kittredgesw@yahoo.com](mailto:kittredgesw@yahoo.com)

Work: (281) 480-2000

Fax: (281) 480-9550

**Mud Engineer**

**George Stokes**

Contact information unavailable

**Operations Superintendent**

**Ronald M. Grout**

Integrated Ocean Drilling Program  
Texas A&M University  
1000 Discovery Drive  
College Station TX 77845-9547  
USA

[grout@iodp.tamu.edu](mailto:grout@iodp.tamu.edu)

Work: (979) 845-2144

Fax: (979) 845-0876

**Drilling Engineer**

**Dean Ferrell**

Integrated Ocean Drilling Program  
Texas A&M University  
1000 Discovery Drive  
College Station TX 77845-9547  
USA

[ferrell@iodp.tamu.edu](mailto:ferrell@iodp.tamu.edu)

Work: (979) 862-1961

Fax: (979) 845-2308

**Laboratory Officer**

**Roy T. Davis**

Integrated Ocean Drilling Program  
Texas A&M University  
1000 Discovery Drive  
College Station TX 77845-9547  
USA

[davis@iodp.tamu.edu](mailto:davis@iodp.tamu.edu)

Work: (979) 845-2367

Fax: (979) 845-0876

**Assistant Laboratory Officer**

**Timothy Bronk**

Integrated Ocean Drilling Program  
Texas A&M University  
1000 Discovery Drive  
College Station TX 77845-9547  
USA

[bronk@iodp.tamu.edu](mailto:bronk@iodp.tamu.edu)

Work: (979) 845-0879

Fax: (979) 845-0876

**Assistant Laboratory Officer**

**Paul Teniere**

Integrated Ocean Drilling Program  
Texas A&M University  
1000 Discovery Drive  
College Station TX 77845-9547  
USA

[teniere@iodp.tamu.edu](mailto:teniere@iodp.tamu.edu)

Work: (979) 458-1067

Fax: (979) 845-0876

**Marine Curatorial Specialist**

**Bruce C. Horan**

Integrated Ocean Drilling Program  
Texas A&M University  
1000 Discovery Drive  
College Station TX 77845-9547  
USA

[horan@iodp.tamu.edu](mailto:horan@iodp.tamu.edu)

Work: (979) 845-8490

Fax: (979) 845-0876

**Imaging Specialist**

**William Crawford**

Integrated Ocean Drilling Program  
Texas A&M University  
1000 Discovery Drive  
College Station TX 77845-9547  
USA

[crawford@iodp.tamu.edu](mailto:crawford@iodp.tamu.edu)

Work: (979) 862-7757

Fax: (979) 458-1617

**Yeoperson**

**Jennifer Presley**

Integrated Ocean Drilling Program  
Texas A&M University  
1000 Discovery Drive  
College Station TX 77845-9547  
USA

[presley@iodp.tamu.edu](mailto:presley@iodp.tamu.edu)

Work: (979) 845-1190

Fax: (979) 845-0876

**Marine Laboratory Specialist: Chemistry**

**Christopher Bennight**

Integrated Ocean Drilling Program  
Texas A&M University  
1000 Discovery Drive  
College Station TX 77845-9547  
USA

[bennight@iodp.tamu.edu](mailto:bennight@iodp.tamu.edu)

Work: (979) 845-7209

Fax: (979) 845-0876

**Marine Laboratory Specialist: Chemistry**

**Lisa Brandt**

Integrated Ocean Drilling Program  
Texas A&M University  
1000 Discovery Drive  
College Station TX 77845-9547  
USA

[brandt@iodp.tamu.edu](mailto:brandt@iodp.tamu.edu)

Work: (979) 845-2673

Fax: (979) 845-0876

**Marine Laboratory Specialist: Core (temp.)**

**Lisa Hawkins**

Integrated Ocean Drilling Program  
Texas A&M University  
1000 Discovery Drive  
College Station TX 77845-9547  
USA

[captain\\_lisa@hotmail.com](mailto:captain_lisa@hotmail.com)

Work: (979) 845-3602

Fax: (979) 845-0876

**Marine Laboratory Specialist:  
Downhole Tools/Thin Sections**

**Peter Kannberg**  
Integrated Ocean Drilling Program  
Texas A&M University  
1000 Discovery Drive  
College Station TX 77845-9547  
USA  
[kannberg@iodp.tamu.edu](mailto:kannberg@iodp.tamu.edu)  
Work: (979) 845-3602  
Fax: (979) 845-0876

**Marine Laboratory Specialist:  
Paleomagnetism**

**Jennifer Henderson**  
Integrated Ocean Drilling Program  
Texas A&M University  
1000 Discovery Drive  
College Station TX 77845-9547  
USA  
[henderson\\_j@iodp.tamu.edu](mailto:henderson_j@iodp.tamu.edu)  
Work: (979) 845-3602  
Fax: (979) 845-0876

**Marine Laboratory Specialist:  
Physical Properties**

**Heather Paul**  
Integrated Ocean Drilling Program  
Texas A&M University  
1000 Discovery Drive  
College Station TX 77845-9547  
USA  
[paul@iodp.tamu.edu](mailto:paul@iodp.tamu.edu)  
Work: (979) 845-3602  
Fax: (979) 845-0876

**Marine Laboratory Specialist:  
Underway Geophysics**

**Karen Johnston**  
Integrated Ocean Drilling Program  
Texas A&M University  
1000 Discovery Drive  
College Station TX 77845-9547  
USA  
[johnston@iodp.tamu.edu](mailto:johnston@iodp.tamu.edu)  
Work: (979) 845-3602  
Fax: (979) 845-0876

**Marine Laboratory Specialist: X-Ray  
Jason Deardorff**

Integrated Ocean Drilling Program  
Texas A&M University  
1000 Discovery Drive  
College Station TX 77845-9547  
USA  
[deardorff@iodp.tamu.edu](mailto:deardorff@iodp.tamu.edu)  
Work: (979) 845-2481  
Fax: (979) 845-0876

**Marine Instrumentation Specialist  
Randy Gjesvold**

Integrated Ocean Drilling Program  
Texas A&M University  
1000 Discovery Drive  
College Station TX 77845-9547  
USA  
[gjesvold@iodp.tamu.edu](mailto:gjesvold@iodp.tamu.edu)  
Work: (979) 845-3602  
Fax: (979) 845-0876

**Marine Instrumentation Specialist  
Mike Meiring**

Integrated Ocean Drilling Program  
Texas A&M University  
1000 Discovery Drive  
College Station TX 77845-9547  
USA  
[kleinmeiring@yahoo.com](mailto:kleinmeiring@yahoo.com)  
Work: (979) 845-3602  
Fax: (979) 845-0876

**Marine Computer Specialist  
Michael J. Hodge**

Integrated Ocean Drilling Program  
Texas A&M University  
1000 Discovery Drive  
College Station TX 77845-9547  
USA  
[hodge@iodp.tamu.edu](mailto:hodge@iodp.tamu.edu)  
Work: (979) 862-4845  
Fax: (979) 458-1617

**Marine Computer Specialist  
David Morley**

Integrated Ocean Drilling Program  
Texas A&M University  
1000 Discovery Drive  
College Station TX 77845-9547  
USA  
[morley@iodp.tamu.edu](mailto:morley@iodp.tamu.edu)  
Work: (979) 862-4847  
Fax: (979) 458-1617

**Applications Developer**  
**Dwight Hornbacher**  
Integrated Ocean Drilling Program  
Texas A&M University  
1000 Discovery Drive  
College Station TX 77845-9547  
USA  
[hornbacher@iodp.tamu.edu](mailto:hornbacher@iodp.tamu.edu)  
Work: (979) 845-1927  
Fax: (979) 845-2308