

THIN SECTION LABEL ID: 403-U1618A-5H-3-W 63/66-TSB-TS#3**Group****Summaries**

Sedimentary
features:

Clasts of different rock types are touching grain boundaries; dominantly quartz

Structural
features:

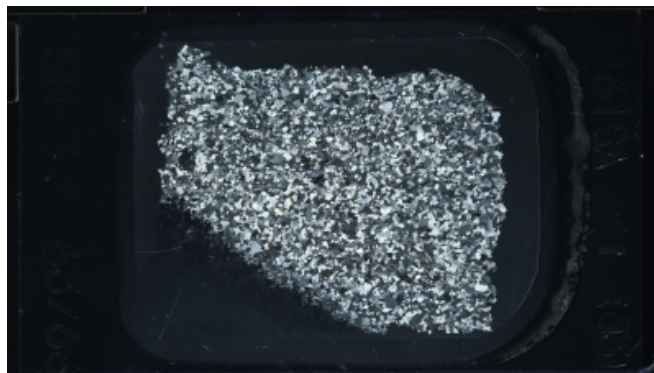
Grains appear fractured in the x and y directions, creating block-like fractures

Plane-polarized



78970311

Cross-polarized



78970291

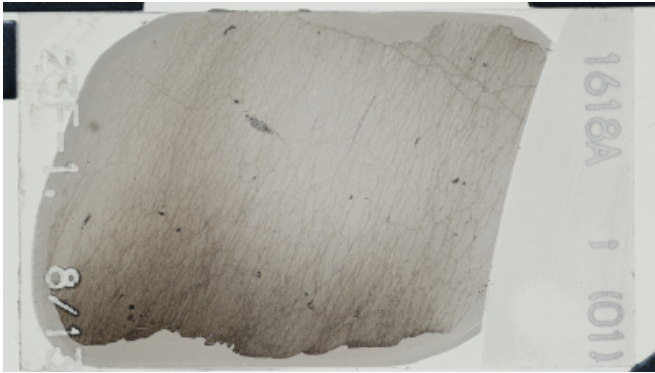
THIN SECTION LABEL ID: 403-U1618A-23F-1-W 8/13-TSB#1-TS#1**Group****Summaries**Sedimentary
features:

Clast, possibly schist, within a silty clay

Structural
features:

slightly oriented fine-grained opaque minerals and micas

Plane-polarized



78970251

Cross-polarized



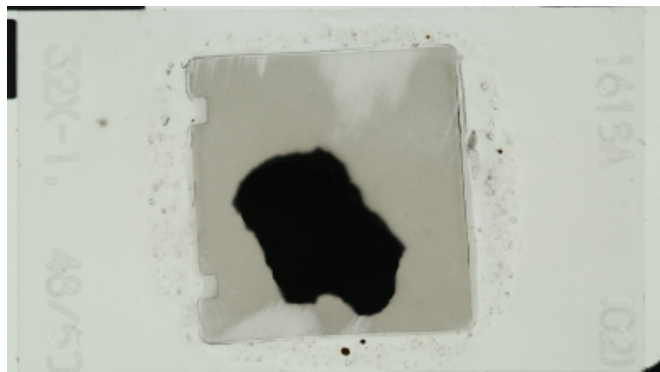
78970271

THIN SECTION LABEL ID: 403-U1618A-32X-1-W 48/50-TSB#2-TS#2**Group****Summaries**

Structural
features:

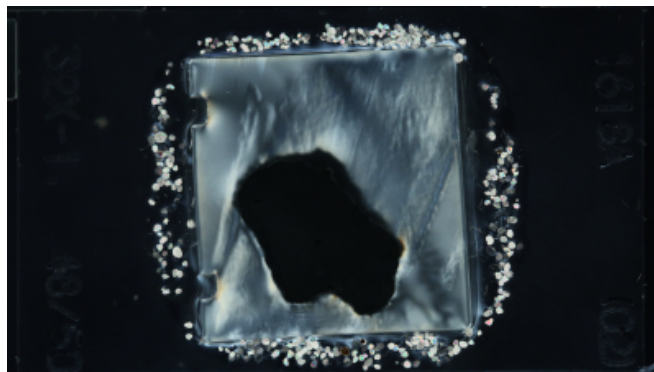
This slide has metallic texture, and not transparent. The sand grains are surrounded by authigenic greigite, and several small grains, possibly pyrite are also observed.

Plane-polarized



78929191

Cross-polarized



78929171